

2006 products range

## ControlTech Distributor List

COUNTRY	COMPANY	TELEPHONE	EMAIL	WEBSITE	ADDRESS
Australia	Groover Sports Imports	61-3-8790-1718	grooversports@aol.com		3805 2 Beethoven Drive, Nurre Warren South, Victoria, Australia 3805
Austria	Soil & Surf	43-61-35-20633	sports@soilsurf.at	www.soilsurf.at	Bundesstr. 55, A-4822 Bad Gleisern, Austria
Benelux	Mk Frames & Components B.V	31-513-650-87	robcompas@mkframes.nl		Ynteaet 6b, 8440 AG, Heerenvveen, The Netherlands
Brazil	CSC Cycling Center	55-4029-3923	cscvendos@hotmail.com		CSC - Aracildo santos - Rua Pele 589 - Vila Romao CEP: 13322-090 - Sãilo - Sao Paulo - Brazil
China	Summit Wang 王峰	86-138 1289 2330	summit@pazzaz.com		3-601 Bing si yuan, Huan-bei Rd. Kun Shan City, Jiang Su Province, China
Costa Rica	Endurance Sport Costa Rica S.A.	(506) 380-9433	cesdazars@yahoo.com		Cristian e Salazar S. 200 mts sur cementerio, Moravia, San Jose, Costa Rica
Colombia	JC Imports	57-4-361-0707	info@jcimports.com.co	www.jcimports.com.co	Calle 6, No.50-21 - P.O.BOX 66830, Colombia
Denmark	Active sport	45-70-222-071	info@active-sport.net	www.active-sport.net	DK2980 KOKKEDAL INDUSTRIPARK 2A, Denmark
France	Eurostar	2-4078-2400	cycl europe@cyleurope	www.cyleurope.com	Rue Marcel Brneliere, FR-44270 Machecoul
Germany	Fuji Bike	49-220-330-1090	info@fujibikes.de	www.fujibikes.de	Hansetrose 65 51149 Kolin, Germany
Italy	Race ware	52-504-8345	mail@raceware.com		17024 P.za Garbaldi, 18 17024 Finale Ligure (SV) Italy
Japan	Furuta-Snoten Co, Ltd	39-019-680639	furab@e-ftb.co.jp	www.e-ftb.co.jp	3-360 Nakatori Nisi-Ku - Nagoya, Aichi 452-0822 Japan
Korea	Highland Sports	82-2-553-2667	hghlan@highlandsports.co.kr	www.highlandsports.co.kr	Suite 302, Anson Building 773-4 Yeeksam-Dong, Kangnam-Gu, 135-080 Seoul - Korea
New Zealand	H.S White & Son Ltd.	64-9-273-7690	gillan@hswite.co.nz		106 Karamawa Street Po box 5377, Palmerston North Auckland, New Zealand
Singapore	Boon Bike Supply	65-6-2428488	soonwat@pacific.net.sg	www.boonbike.com	488 Changi Road - Singapore 419898
Spain	Velo Import,S.L.	94-524-6500	luis@velinsa.com		Beccollarr 2, Pabellon 14 (Zona Industrial Alt.Gobeo) 01010 Victoria-Spain
Sweden	A.B Cykeldistri-bution	46-500-470185	cykeldistribution@itscali.se	www.cykeldistribution.com	Skovdevogvan 21 S-549 31 Tidan Sweden
Taiwan	Dalux Int. Co. Ltd	886-4-8353575	kenforce@ms15.hinet.net	www.kenforce.com.tw	No.461, sec 1, Fu-lung Rd, Yuanlin, Chang-Hua Taiwan
Thailand	SIAM BIKE & PARTS CO.,LTD	66-(0)2722-9999	thun@tron@siambike.co.th	www.siambike.co.th	2456 Soi 58 Prathnakan Rd. Suanlung Bangkok 10250, Thailand.
U.S.A.	Linear Components, Inc	949-470-3700	info@linear-components.com	www.linear-components.com	20381 Lake Forest Dr. #B-13 Lake Forest, CA 92630 USA



TUBULAR WHEELS	rim depth	rim	spokes	lacing	spoke material	weight
Front	45	carbon	16	radial	titanium or 1.4301 steel	680
Rear	45	carbon	24	crossed	titanium or 1.4301 steel	900

BAR ENDS	reach	material	bolts	weight
Comp BE	78	carbon	titanium	90

CAPS	material	Ø steerer	bolts	weight
Comp CAP	carbon	1" 1/8	316 stainless	27

CLAMP	material	Ø seat tube	bolts	weight
Comp SC	carbon	31,8 - 34,9	Titanium	17

BOTTLECAGES	material	weight
Comp BC	carbon	27

CYCLE COMPUTER HOLDER	material	weight
Taxxi	plastic	25
Pilot checkpoint	carbon	25

all measurement are in millimeters and grams

**CONTROLTECH**  
bicycle components USA



carbon comp

Carbon composite handlebar • Aero-Ergo with flat top area following shoulder shape • Manufactured in one piece monocoque structure • Fully guided internal cable routing • Reinforced and textured lever and stem clamping areas



mono comp

Integrated carbon fiber handlebar/stem with front Ergo computer holder • One piece monocoque structure • Ergonomic shape with flat top area • Fully guided internal cable routing • Reinforced lever clamping areas • Ti hardware

BOTTOM BRACKETS	axle system	BSA thread (english)	Italian thread	axle material	body	weight
Comp - BB02 SC	ISIS	1.37""*24T(68*108, 68*113, 73*113)	36*24T(70*108)	scandium	carbon	124
Comp - BB02 TI	ISIS	1.37""*24T(68*108, 68*113, 73*113)	36*24T(70*108)	titanium	carbon	153
Comp - BB03 TI	ISO	1.37""*24T(68*102)	-	titanium	carbon	154

CRANKSETS	axle type	chain rings	bolts circle	arm leght	arms	weight
Carbon comp	ISIS - Shimano ISO	53x39 - 52x42	130 - 135	170 - 172,5 175	carbon	560
Carbon Compact	ISIS - Shimano ISO	50x36 - 50x34 - 48x34	110	170 - 172,5 175	carbon	560

SADDLE	lenght	width	rails	rail diameter	material	weight
Carbon comp	265	110	carbon	7	carbon	129

SKEWERS	open/ close	finish	material	weight	SPACERS	height	material	weight
Race skewers	hex key	black / silver	titanium	46	Comp - HS	25	carbon	8
Comp-QR	QR lever	carbon / titanium	carbon	67	Comp - HS	35	carbon	10

SEATPOSTS	Ø column	lenght	offset	material	bolts	weight
Feather	27.2	250/300	23	carbon	titanium	200
Ipost	27.2/31,6	250/300/350	20	carbon	316 stainless	161
Wepost	27.2/31.6	300/350	25	carbon	titanium	170
Team Issue 1 SC	27.2/31,6	350/400	12	scandium	316 stainless	212
Team Issue 3 SC	27.2/31.6	300/350	22	scandium	316 stainless	221
Team Issue 2 A	27.2/31.6	300/350	18	A 2014	316 stainless	218

ROAD HANDLEBARS	stem	width	drop	reach	internal cable routing	material	bolts	weight
Mono Comp	100-110-120	420 / 440	150	80	yes	carbon	titanium	384
Carbon Comp		420 / 440	150	80	yes	carbon	-	250
Formidable		420 / 440	150	80	carbon guide	aluminum	-	280

TRIATHLON	width	stem extension	stem angle	material	bolts	weight
Manta	420	100-110-120	- 10°	carbon	titanium	814

MTB COMBO	size	bend	rise	angle	weight
Crossbow	100-110 X 640 / 120-130 X 660	6°	25	3°	375

MTB HANDLEBARS	length	degree	center Ø	height	rise	material	weight
Comp MT 28 CB	580	6°	31,8	-	-	carbon	130
Comp DH 18 CB	710	7°	31,8	55	40	carbon	208
Sup MT 28 SC	580	6°	31,8	-	-	scandium	130
Sup MT 18 SC	660	6°	31,8	50	20	scandium	180
Sup DH 18 SC	710	8°	31,8	70	50	scandium	270
Sup MT 28 A	580	6°	31,8	-	-	aluminum	160
Sup MT 18 A	660	6°	31,8	50	20	aluminum	185
Sup DH 18 A	710	8°	31,8	70	50	aluminum	285

STEMS	length	angle	headset tube clamp height	handlebar Ø	material	bolts	weight
Unit	100 to 130	- 5°	40	31,8	carbon	titanium	135
Scored 99	90 to 130	- 5°	38	31,8	scandium	titanium	99
Newton road	90 to 130	- 5°	38	31,8	aluminum	titanium	161
Newton mtb	90 to 130	+ 5°	38	31,8	aluminum	316 stainless	161
Direct connect	-	-	-	31,8 / 25,4	aluminum	316 stainless	437

all measurement are in millimeters and grams



formidable

New high tech aluminum alloy handlebar, manufactured by advanced technology, Hydro-forming process • Aero-Ergo with flat top area following shoulder shape • Ergonomic shape • Cable guide



manta



Triathlon set with carbon composite stem, handlebar, arm supports and extension bars applied on patented front stem clamp system • Adjustable height • Ti hardware • Internal cable guide

comp-QR



race skewers

COMP QR: Hi-tech combination of titanium and carbon for this exquisite QR set • Very lightweight

RACE SKEWERS:  
An ideal match for race wheel set, using Ti 6Al/4V titanium rod with 5 mm skewer shafts • Black anodized and silver • Ultra light weight

## wheels



### COMP-RM-CR

this carbon fiber aerodynamic wheel gives the best combo of ultralight rims and super light aluminum alloy hubs • For tubular type tires • Aero style titanium or DT Swiss (black) spokes

## crossbow



Carbon fiber MTB handlebar/stem combo with computer holder • This mono-coque structure offers precision driving, better shocks absorbing, and aggressive performances • Ti hardware



## off road carbon handlebars



Carbon composite material

- Super strong
- Ultra lightweight
- Flat and rise handlebars

## carbon compact

## carbon comp



One piece monocoque carbon fiber crankset

- Standard bolt circle or compact
- CNC machined 7075 alloy chainrings,
- 6/4 Titanium crank extractor





bottom brackets

COMP-BB02-SC  
carbon fiber body • ISIS drive  
• CNC Scandium axle  
• Ultra lightweight

COMP-BB02-T1  
carbon fiber body • ISIS drive  
• CNC machined 6AL4V titanium axle

COMP-BB03-T1  
Carbon fiber body • ISO drive (squared)  
• CNC machined 6AL4V titanium axle

off road  
scandium & 7075  
handlebars



made from Scandium alloy  
• Super strong and durable  
• Lightweight  
• One flat and two rise handlebars of which one downhill specific  
• This range is also available in 7075 T6

unit



pilot checkpoint



taxxi



**UNIT:**  
Hollow monocoque carbon composite stem • Strong structure no torsion, no flexion • Ti hardware

**PILOT CHECKPOINT:**  
The elegant and prestigious monocoque carbon composite piece holding speedometer • Easily fits on the 4 bolts front clamp stems.

**TAXXI:**  
simpler version of Pilot Checkpoint made from impact-resistant plastic

comp SC



comp BE



**COMP SC:**  
carbon fiber seat clamp • Ti hardware

**COMP BE:**  
for mountain bike enthusiasts, our monocoque carbon fiber stumpy bar end comes with Titanium hardware



scored 99



newton road



SCORED 99:  
3D forged scandium stem • Strong and ultralight • Ti hardware • Carbon clamp

NEWTON ROAD:  
CNC machined • 3D forged 7075 alloy • New front clamp strong and light • Ti hardware

carbon comp



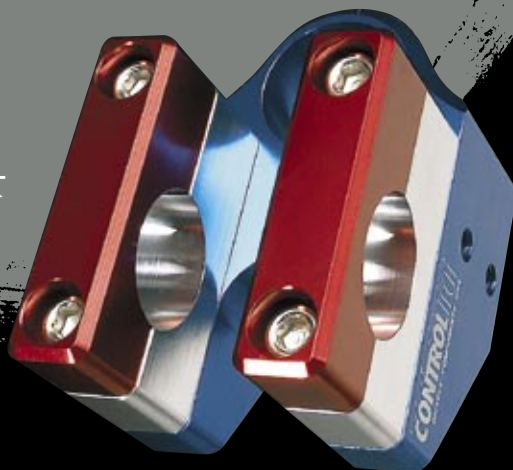
Carbon fiber composite leaf spring suspension saddle with reinforced stainless steel tubes on carbon rails • Reinforced carbon shell



newton mtb



direct connect



team issue 2A



#### DIRECT CONNECT:

Ultimate in strength for the most critical downhill races • With two adjustable extension of 35 & 45 mm for quicker steering and more upright position • CNC machined • Finishing options: Anodized in silver / black, or in red, white, and blue

#### NEWTON MTB:

CNC machined • 3D forged 7075 alloy  
• New front clamp strong and light

Our new 3D cold forged 2014 aluminum  
• Micro-adjust seat clamp with adjustable saddle positioning • Black anodized

## bottlecage

team issue 3SC

team issue 1SC



Cold forged scandium alloy seat post •  
Designed to be light and strong • Micro  
adjust seat clamp with customized posi-  
tioning • Ti hardware

3D forged and CNC scandium alloy •  
Micro adjust seat clamp with preferred  
position • Ti hardware



spacer

cap



COMP BC:  
for those who appreciate state of art  
design and lightness the reply is this  
monocoque carbon water bottle cage.

COMP CAP:  
Carbon steerer fork friendly, Internal  
expanding system (better than star fan-  
gled nut) • With carbon top cap

COMP HS:  
Super light carbon fiber tapered spacer  
elegantly coordinates your integrated  
head tube and stem





feather



Aerodynamic carbon seatpost designed for time trial and triathlon competitions

- Monocoque carbon fiber construction
- Ti hardware

ipost



wepost

IPOST:

Carbon fiber monocoque seatpost • Low profile clamp is designed to gain aerodynamic and prevent bolt from being a pike sticking out above the clamp level

- Ti hardware

WEPOST:

same as IPOST but with a 2 bolts head