



## **Vanilla DH Rear Shock Installation Instructions**

### **Intense M-1**

**FOX RACING SHOX**  
130 Hangar Way,  
Watsonville, CA 95076  
831.768.1100 FAX 831.768.9312  
E-Mail: [service@foxracingshox.com](mailto:service@foxracingshox.com)  
Website: [www.foxracingshox.com](http://www.foxracingshox.com)

**FOX Racing Shox Vanilla DH Installation Instructions for the Intense M-1**

Prior to installing the FOX Racing Shox Vanilla DH on 2002/2003 model year Intense M-1 frames some modifications are required. It is necessary to displace material along the centerline of the frame at the upper shock mount. This process makes room for the spring and spring retainer. It is also necessary to modify the chainstay to create a mounting surface for the reservoir.

**Upper Shock Mount Material Displacement**

The material along the centerline of the frame is covered by a weld bead that sits above the frame surface. By using a blunt tool such as the plastic end of a screw driver along with a hammer, the needed clearance can be created. Measure 1/2" down from the mount hole, make the first mark with a felt tip pin. Make another mark 1-1/4" down from the mount hole. The material that needs to be displaced is located between the two marks. (Fig. 1) The width of the depression should be 1/2" and provide clearance for the spring and retainer. Be sure to check clearance with the shock mounted in the lowest mount hole of the link arm.

**UPPER MOUNT HOLE  
SPRING CLEARANCE**

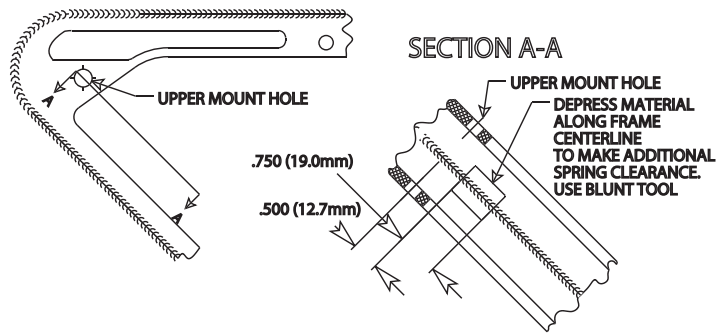


Fig. 1 Upper Mount Hole Spring Clearance

**Cradle & Reservoir Mounting Surface**

Mounting the reservoir requires a cradle that must be attached to the frame. The cradle can be attached either by drilling the frame and installing riv-nuts which will accept the mounting screws or by using double-sided tape. See Fig. 2 for details about hole size and location for riv-nuts. If using double-sided tape, adhere tape in the same center-to-center location as where the riv-nuts would be.

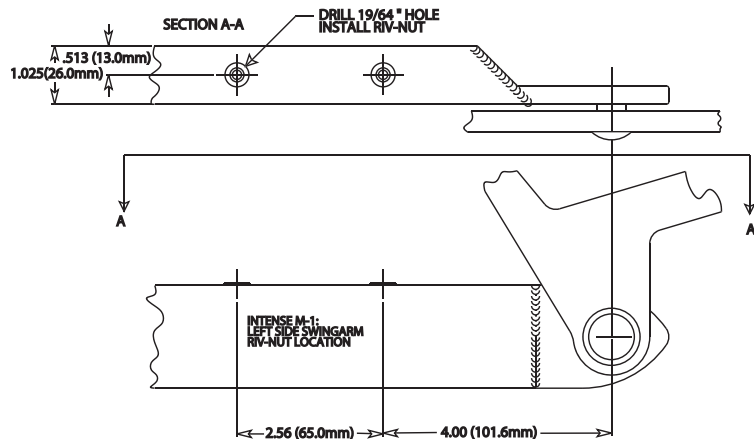


Fig. 2 Chainstay Cradle & Reservoir Mounting Surface

**Vanilla DH Installation Method:**

Mount the shaft eye of the shock to the upper mount on the frame (Fig. 3). Install the FOX Racing Shox Vanilla DH with the body cap mounted to the link arms of the swingarm assembly (Fig. 4). Torque fasteners as specified in your Intense Cycles Owner's Manual. Note: Make sure that the hose for the Vanilla DH shock exits down and back along the chainstay. Also make sure the shaft eye is oriented so that the rebound knob is facing up (Fig. 3). Install the reservoir cradle with the thicker section to the front (Fig 5). Insert the socket head screw in the rear hole with a plastic spacer between the plastic cradle and frame. Install the button head screw in the forward hole with a plastic spacer between the plastic cradle and frame. Firmly attach the shock reservoir to the cradle with two zip ties. See Rear Shock Owner's Manual for set-up and tuning instructions.



Fig. 3 Upper Mount

**Installation Hardware:**

- FOX DH Reservoir Cradle, p/n 026-01-008
- .375" thick plastic Spacer (2), p/n 233-00-035-A
- M5 X 25 Socket Head Screw, p/n 019-01-014-A
- M5 X 25 Button Head Screw, p/n 019-01-015-A
- Zip Tie (2), p/n 026-00-003

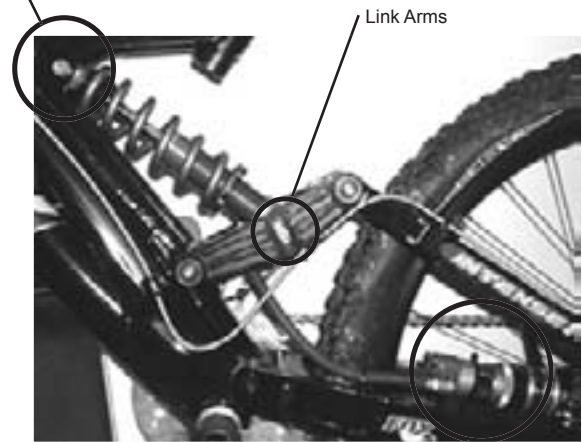


Fig. 4 Intense M-1



Fig. 5 Cradle and Reservoir on Chainstay