

PUSH YOUR LIMITS!



LAZER[®]
H E L M E T S

LAZER



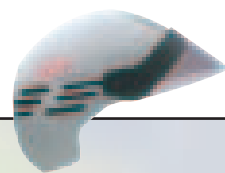
1919



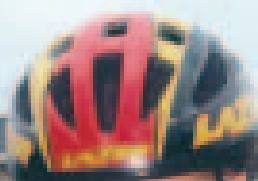
1955



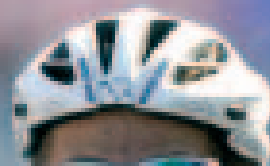
1972



1987



1998



2005

history and experience since 1919



To discover

2007

2006

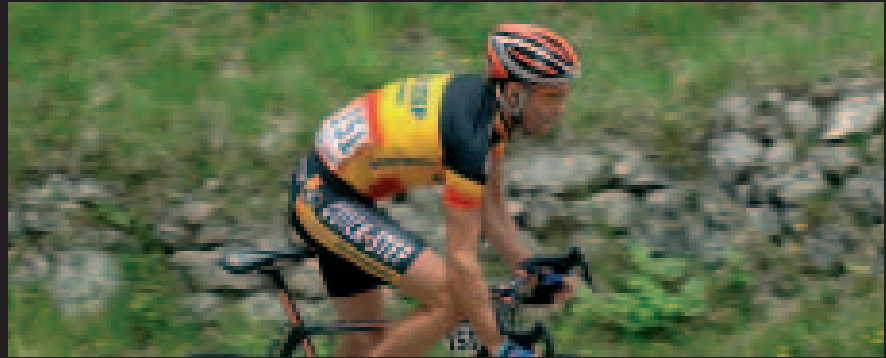
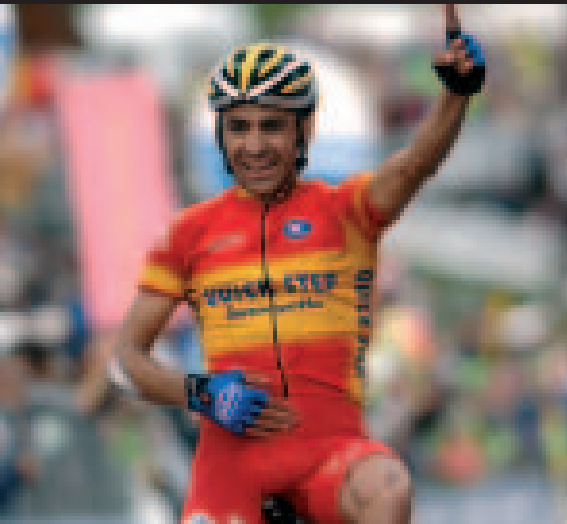
QUICK-STEP
Innergetic



HISTORY	01
ROAD EDITION	02/13
GENESIS RD	06/07
BLADE RD	08/09
DEVIL	10/11
CHRONO 3	12/13
MOUNTAINBIKE EDITION	14/29
GENESIS XC	18/19
BLADE XC	20/21
MAGMA/BIG MAGMA	22/23
X3M	24/25
TOPAZ/ONE	26/27
FACTORY RIDER/EXCALIBUR/VOLTAGE	28/29
LADY EDITION	30/33
GENESIS LDY/BLADE LDY/MAGMA LDY/X3M LDY	32/33
KIDS EDITION	34/36
MAX/MAX DELUXE/MAX PACK	36

LAZER[®]
HELMETS

QUICKSTEP-INNERGETIC THE WINNERS CHOICE



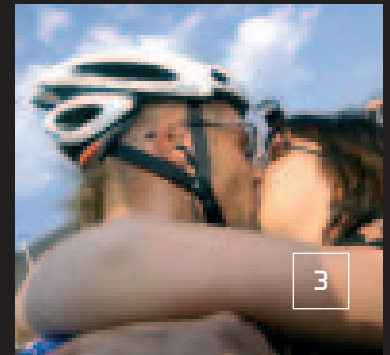
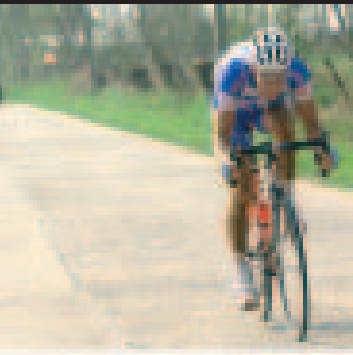
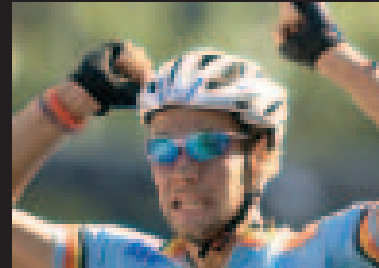
GARATE (GENESIS RD YELLOW) - BAGUET (GENESIS RD RED)
2 X ITALIAN CHAMPION AND OLYMPIC CHAMPION (PAOLO BETTINI)
MILAN SAN REMO (GENESIS RD BLUE)

2

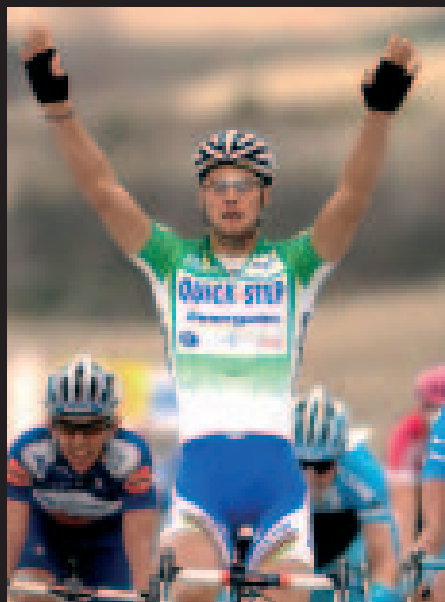
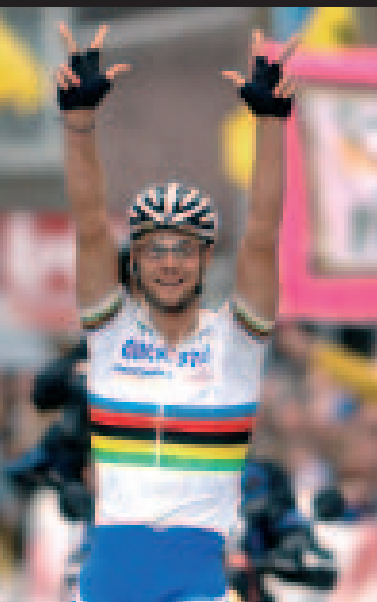
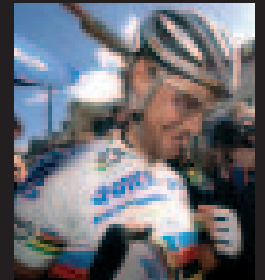
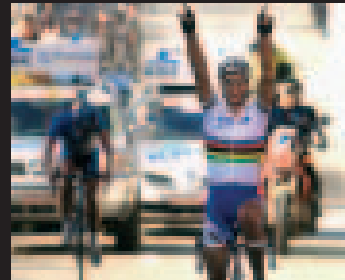
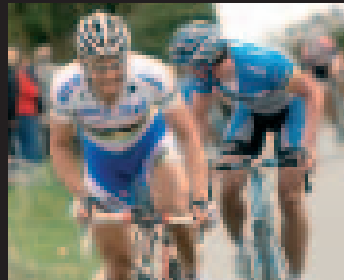
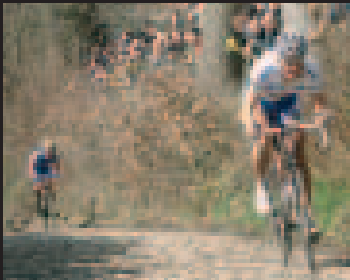


TORNADO TOM (Boonen)

THE FASTEST HELMET IN THE WORLD



3

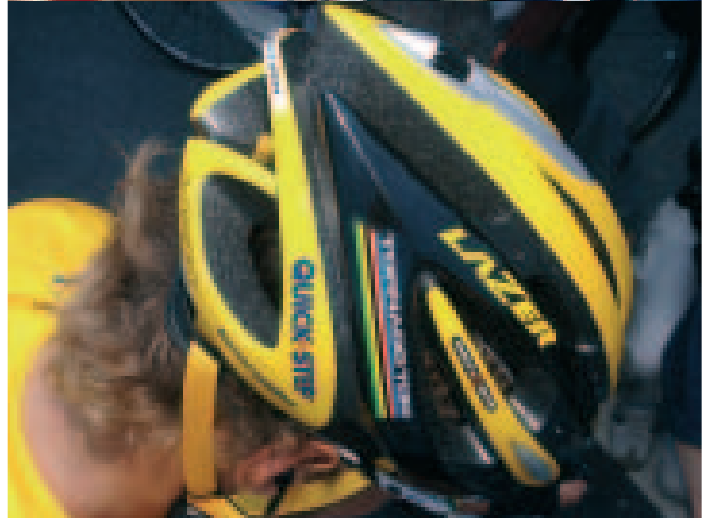
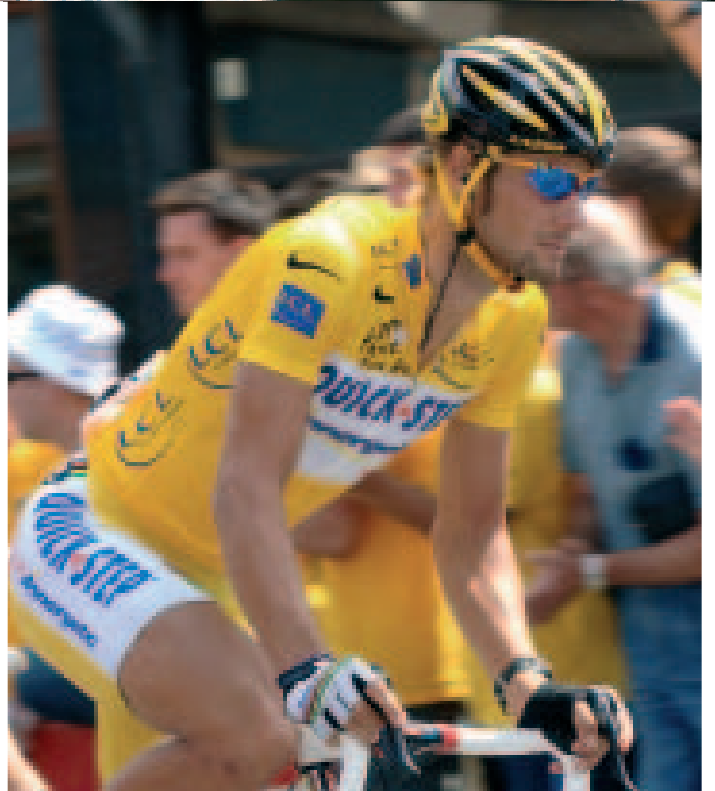


WORLD CHAMPIONSHIPS 2005 (BLADE PEARL WHITE)
 RONDE VAN VLAANDEREN 2005 (BLADE PEARL WHITE)
 RONDE VAN VLAANDEREN 2006 (GENESIS RD SILVER WHITE LTD)
 E3 PRIJS/PARIS NICE (GENESIS RD)

© tdwSPORT

LAZER[®]
 HELMETS

LEGENDARY BELGIAN DESI



GN SINCE 1919

ROAD EDITION

© ldsport



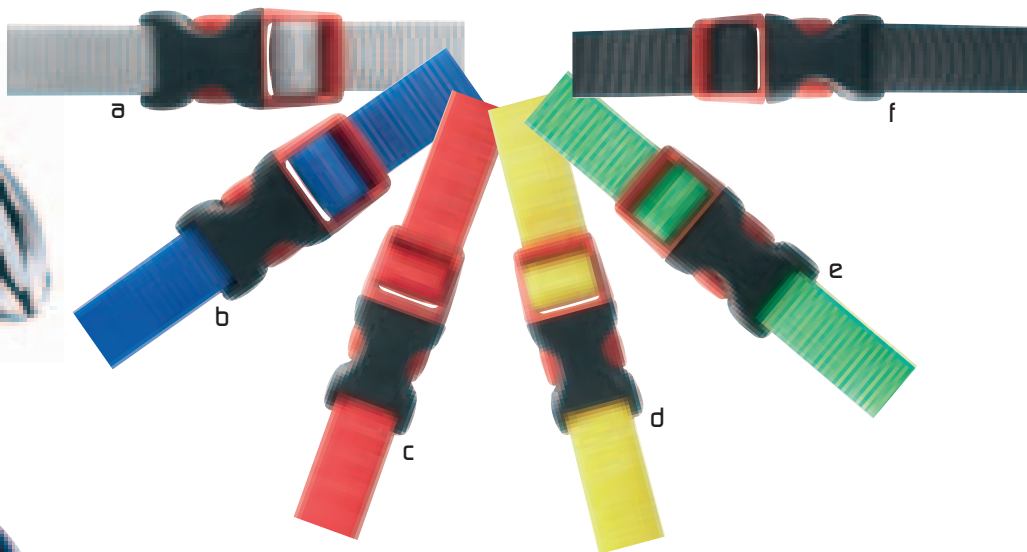
LAZER[®]
HELMETS

Genesis RD : BLC025010 - Genesis RD White Silver : BLC025020



a

White Silver



a

b

c

d

e

f



b

Blue White

QUICK-STEP
innergetic


c

Red White



d

Yellow Black



e

Green Black

LAZER ADVANTAGE

- Rollsys® (Retention system)

- One hand use
- No irritating retention system at the back
- Integrated peripheral (round) mechanism

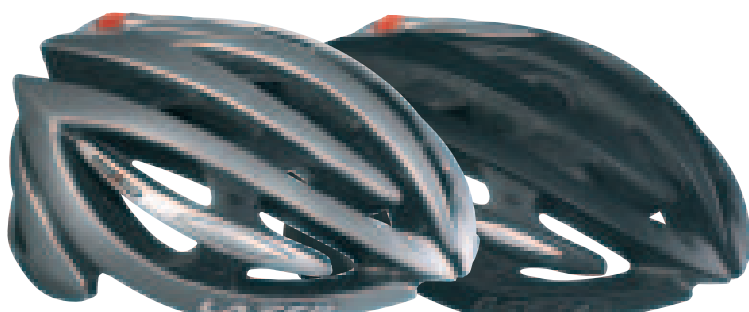
- Design (look)



- Eurobike Design Award
- New headform (perfect fit around your head)
- Road race designs

- RBS® (Rigid cage for multi-impact protection)

- XL vents for better airflow
- Minimum weight



f

Silver Anodized

f

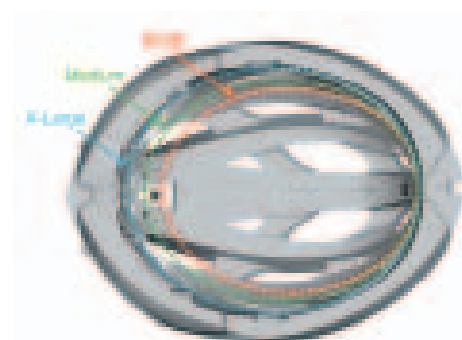
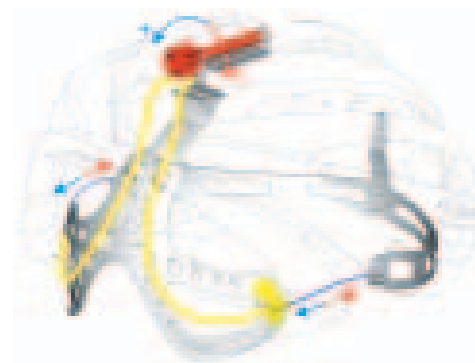
Mat Black

GENESIS RD



In-molded Reinforcement Structure

- Construction :** In-Mold (6 pieces)
- Fit System :** NEW Rollsys® (Patented)
- Ventilation :** 19 vents
- Features :** RBS® : Rigidity Brace System
 Front and rear reinforcement
 Strap divider
 Colored straps
 Coolmax® pads
 1 set extra pads
 Helmet bag
 Genesis Blue White : with team stickers
- Weight :** 285 gr (Medium size)
- Certification :** CE - CPSC - AS
- Sizes :** XXS-M / L-XL

Accurate & Progressive
Peripheral sizing adjustmentNew Fitsystem
Rollsys® handling

LAZER[®]
HELMETS

Blade RD : BLC016030

LAZER ADVANTAGE

- RBS® (Rigid cage for multi-impact protection)
- XL vents for better airflow
- Minimum weight



Pearl White

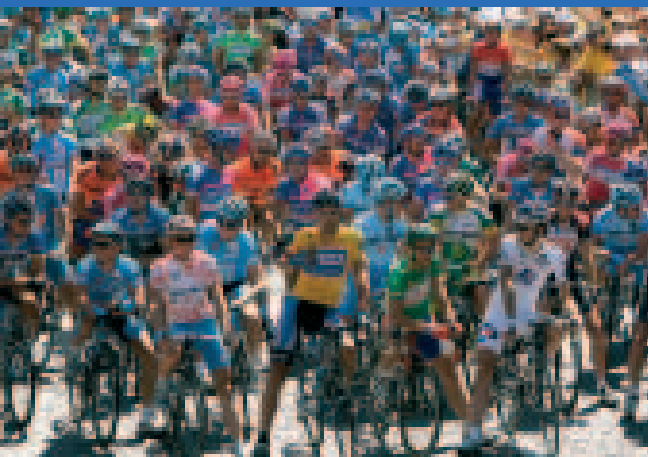


Red White

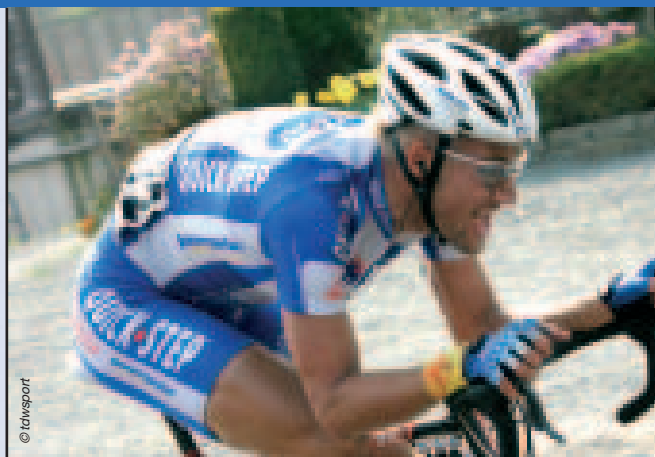


Black Silver

BLADE RD



©tdwSPORT



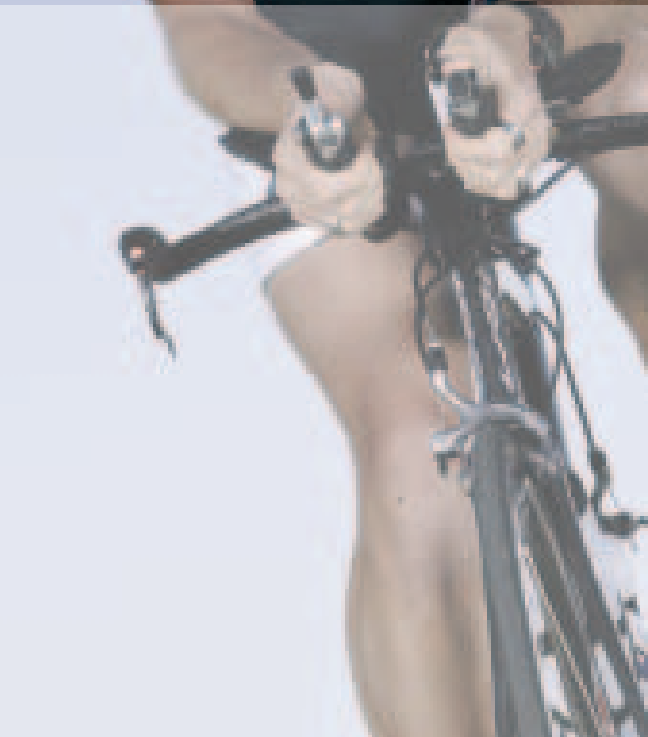
©tdwSPORT



Luke Bell ©Sergio Melo

- Construction :** In-Mold (5 pieces)
- Fit System :** Perfit
- Ventilation :** 16 vents
- Features :** RBS®: Rigidity Brace System
Side and back reinforcement
XL vents for better airflow
Strap divider
- Weight :** 285 gr (Medium size)
- Certification :** CE - CPSC - AS
- Sizes :** XS-M / L-XL

9



©tdwSPORT



LAZER®
HELMETS

SAFETY FOR YOUR RIDE, COMFORT FOR YOUR HEAD

Devil : BLC022010

DEVIL



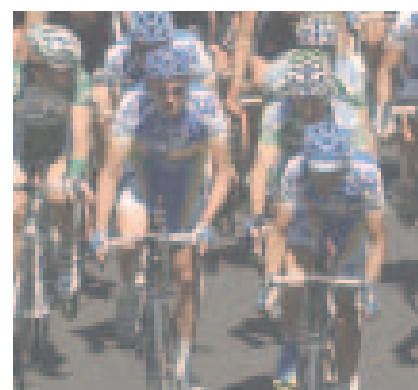
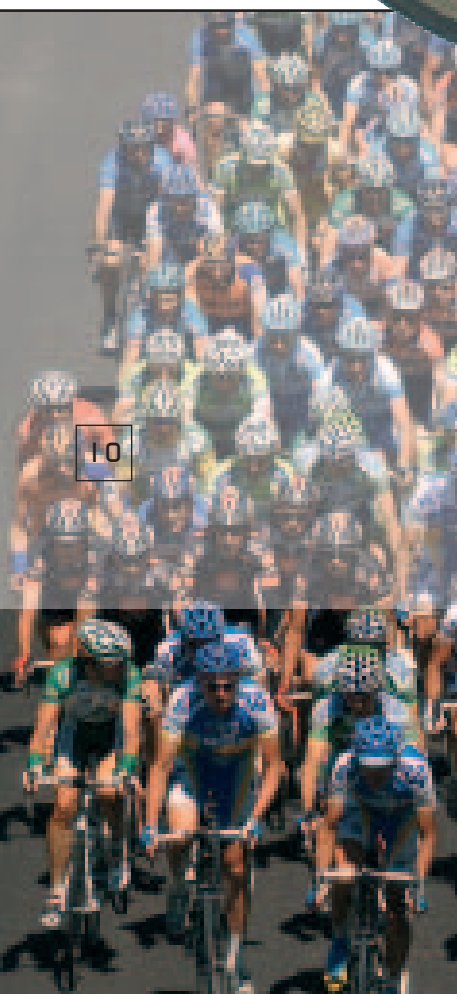
Champagne Black

Titanium Black



Dolphin Blue Black

- Construction :** In-Mold (4 pieces)
- Fit System :** Comfit 2
- Ventilation :** 17 vents
- Features :** Front and rear reinforcement
Visor
- Weight :** 300 gr (XL size)
- Certification :** CE - CPSC - AS
- Sizes :** Unisize S-XL (54-61cm)



Magic Black

Aqua Blue Black

Red Black

Yellow Black

ELEGANCE FOR THE BIGGER BRAIN

Big Devil : BLC022010

LAZER ADVANTAGE

- Frontal airflow
- Snap on visor (race)
- Optimal safety

BIG DEVIL



Dolphin Blue Black

Construction : In-Mold (4 pieces)**Fit System :** Comfit 2**Ventilation :** 17 vents**Features :** Front and rear reinforcement

Visor

Weight : 325 gr (XXL size)**Certification :** CE - CPSC - AS**Sizes :** XL - XXL (61-64cm)

Dolphin Blue Black



Red Black



Titanium Black

LAZER[®]
H E L M E T S

SPEED WITHOUT COMPROMISE

Chrono : BLC019020

LAZER ADVANTAGE

- In-Mold Technology
- Ventilated with no compromise on its aerodynamics
- Quicker than most TT on and off the head for triathletes
- Lightweight (330 gr)



CHRONO 3

Construction :	In-Mold (1 piece)
Fit System :	Turnfit
Ventilation :	3 vents
Features :	Coolmax® pads UCI approved With team stickers
Weight :	330 gr
Certification :	CE - CPSC
Sizes :	Unisize (53-59cm)

13



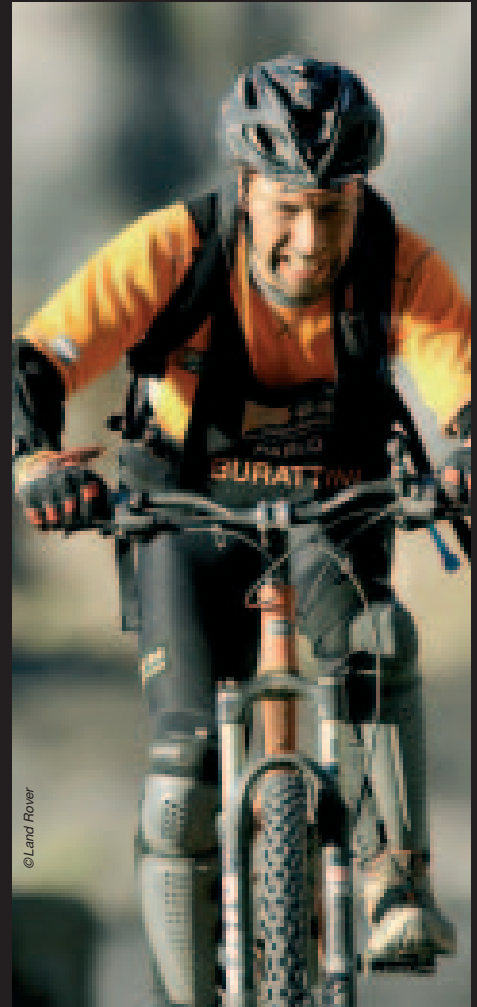
White Metal Team

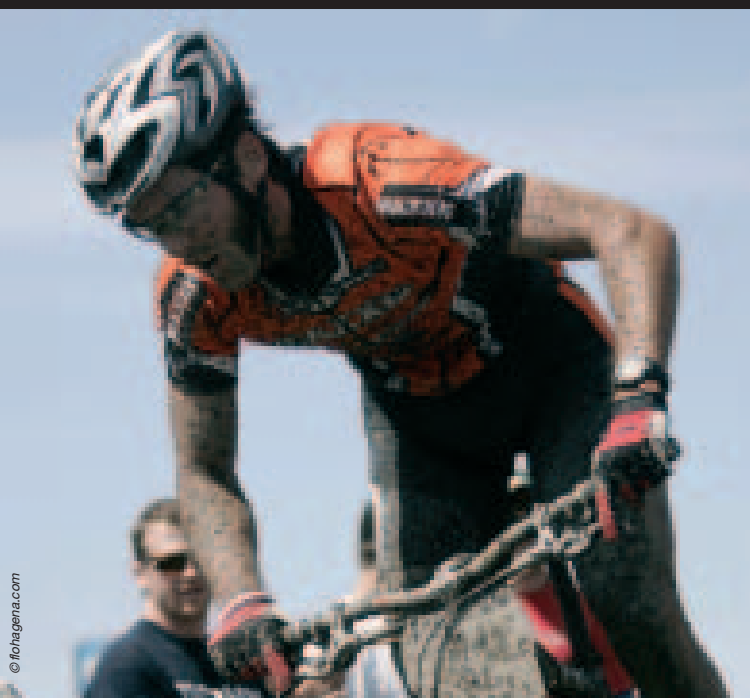
LAZER[®]
H E L M E T S

PUSH YOUR LIMITS



MATHI LEHIKONEN (FACTORY RIDER CARBON CUBIC)
LANDROVER G4 CHALLENGE (MAGMA CARBON)
ADAM CRAIG (MAGMA CARBON)



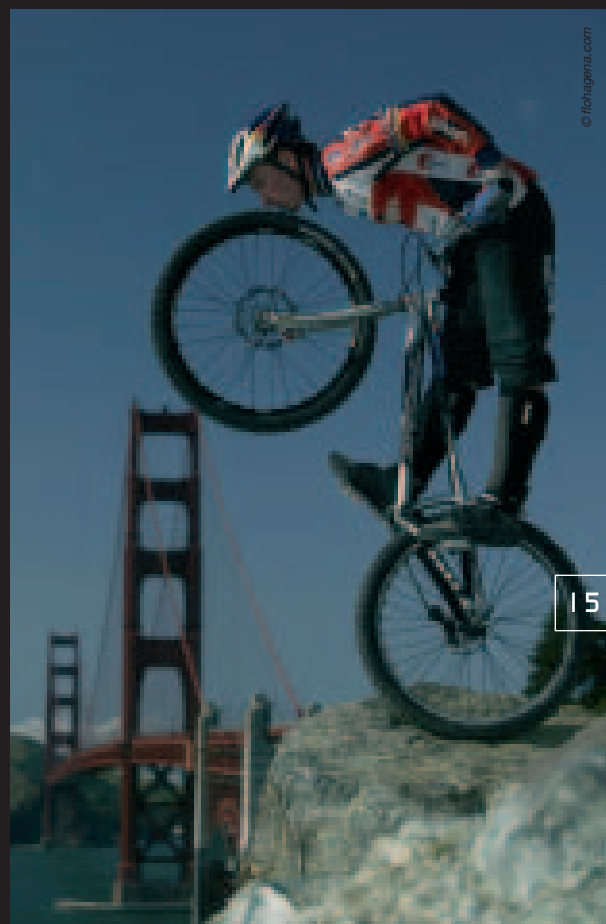


© flohagena.com

GEOFF KABUSH (MAGMA MAT GREY WHITE)

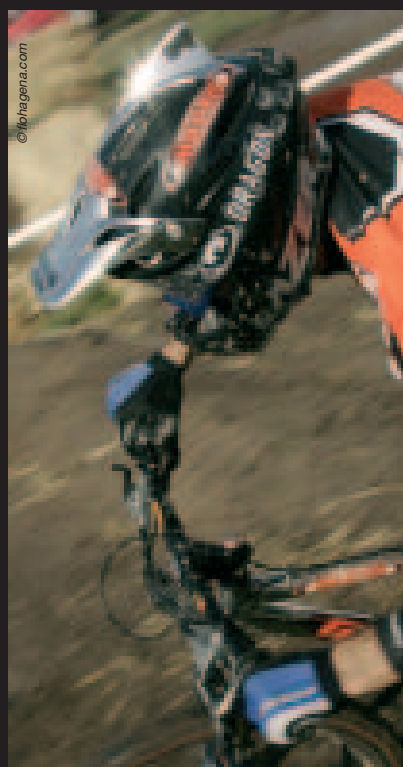
KENNY BELAËY (BLADE XC)

JOHN KIRCKALDIE (FACTORY RIDER CARBON CUBIC)

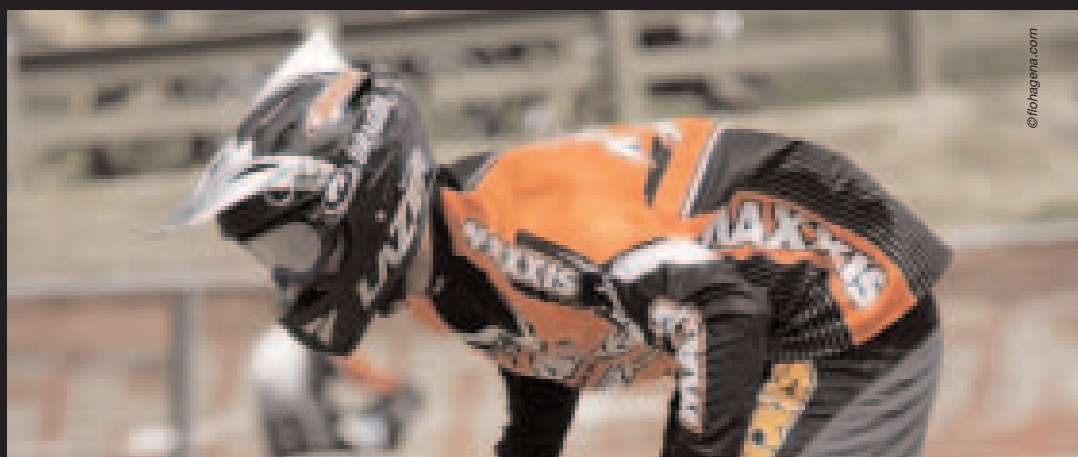


© flohagena.com

15



© flohagena.com



© flohagena.com

LAZER[®]
HELMETS

COOL SHOCK ABSORBERS

© foragen.com

16



MOUNTAINBIKE EDITION

17

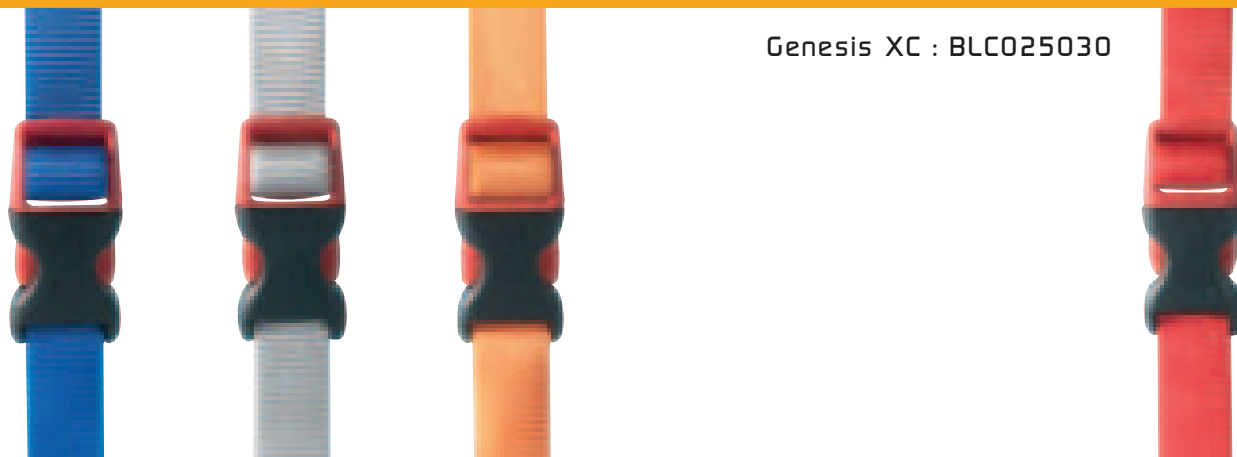


LAZER[®]
HELMETS

INNOVATE DON'T IMITATE

GENESIS XC

Genesis XC : BLC025030



Blue Red White

Titanium Black Silver

Silver Black Orange

18

LAZER ADVANTAGE

- Rollsys® (Retention system)
 - One hand use
 - No irritating retention system at the back
 - Integrated peripheral (round) mechanism
- Design (look)
 - Eurobike Design Award
 - New headform (perfect fit around your head)
 - XC Race designs (perfectly integrated Tec visor)
- RBS® (Rigid cage for multi-impact protection)
 - XL vents for better airflow
 - Minimum weight



Mat Black



Mat Red Black White

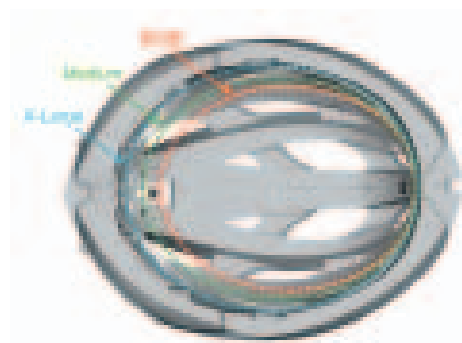
GENESIS XC



Mat Carbon

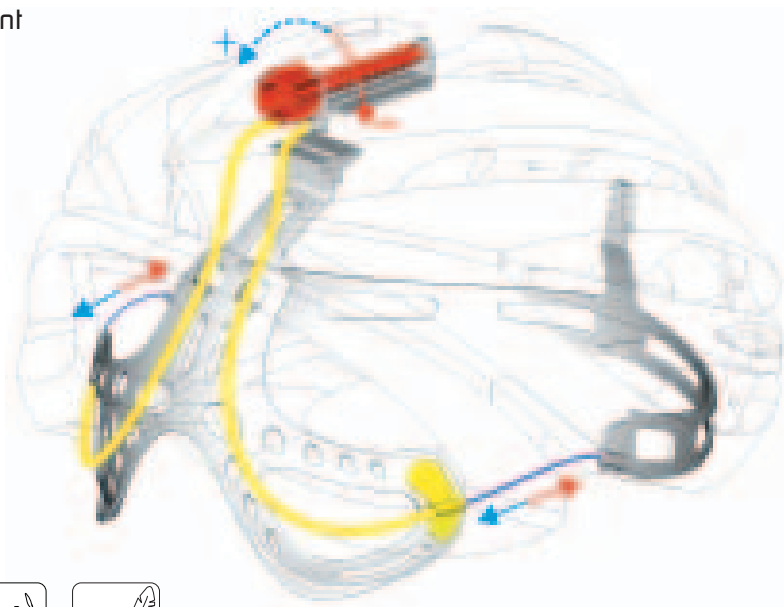


In-molded Reinforcement Structure

Accurate & Progressive
Peripheral sizing adjustment

19

- Construction :** In-Mold (6 pieces)
- Fit System :** NEW Rollsys® (Patented)
- Ventilation :** 19 vents
- Features :**
- RBS®: Rigidity Brace System
 - Front and rear reinforcement
 - Colored Tec Visor
 - Strap divider
 - Colored straps
 - Coolmax® pads
 - 1 set extra pads
 - Helmet bag
- Weight :** 285 gr (Medium size)
- Certification :** CE - CPSC - AS
- Sizes :** XXS-M / L-XL

New Fitsystem
Rollsys® handling

LAZER®
H E L M E T S

Blade XC : BLC016040

LAZER ADVANTAGE

- RBS® (Rigid cage for multi-impact protection)
- XC Race designs (perfectly integrated Tec Visor)
- XL vents for better airflow
- Minimum weight

20

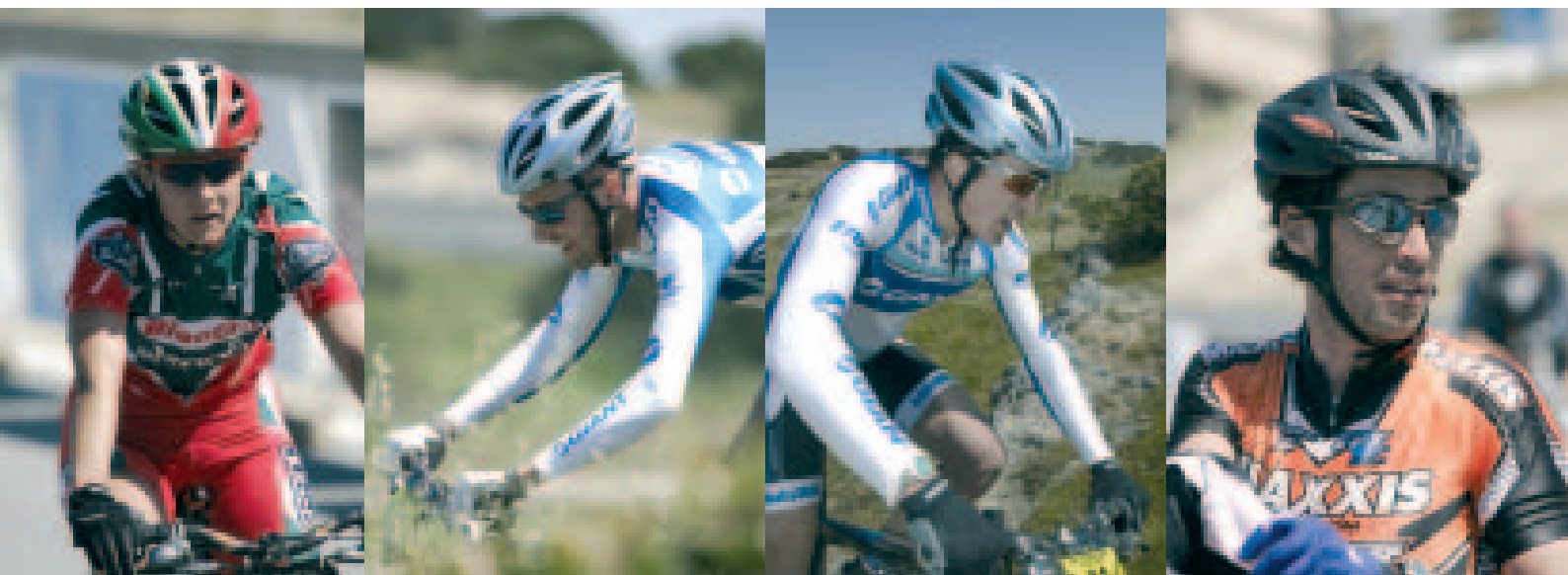


Mat Black



Mat Blue Silver

Mat Grey Silver



BLADE XC



Construction : In-Mold (5 pieces)

Fit System : Perfit

Ventilation : 16 vents

Features : RBS®: Rigidity Brace System

Side and back reinforcement

XL vents for better airflow

Visor

Strap divider

1 set extra pads

Weight : 285 gr (Medium size)

Certification : CE - CPSC - AS

Sizes : XS-M / L-XL

21



LAZER[®]
H E L M E T S

Magma : BLC027010

LAZER ADVANTAGE

- Ideal helmet for the chilly season with the weather cap
- 21 vents
- Race proven

© Land Rover



White Red



Yellow Black

Green Black

Orange Black

Construction : In-Mold (4 pieces)**Fit System :** Comfit 2**Ventilation :** 21 vents**Features :** RBS®: Front and rear reinforcement

Strap divider

Colored straps

Coolmax® pads

1 set extra pads

MTB Visor

Weather cap

Weight : 285 gr (XL size)**Certification :** CE - CPSC - AS**Sizes :** Unisize S-XL (54-61 cm)

Mat Carbon

Blue Grey

Mat Grey White

Mat Grey Grey

Blue White Red

SIZE DOES MATTER

BIG MAGMA XC

Big Magma : BLC027020

LAZER ADVANTAGE

- A real High Tech XXL helmet
- 21 vents
- Weather cap

© Land Rover



Blue Grey



Mat Grey Grey



Mat Carbon



© Land Rover

Construction :	In-Mold (4 pieces)
Fit System :	Comfit 2
Ventilation :	21 vents
Features :	RBS®: Front and rear reinforcement Strap divider Colored straps Coolmax® pads 1 set extra pads MTB Visor Weather cap
Weight :	340 gr (XXL size)
Certification :	CE - CPSC - AS
Sizes :	Unisex XL-XXL (61-64 cm)

23



LAZER[®]
H E L M E T S

USE YOUR HEAD

X3M

X3M : BLC033010

LAZER ADVANTAGE

- Light, lighter, lightest
- Back vents
- Super value for money helmet



Silver White



Grey White



Blue White



Red White



Mat Carbon



X3M : BLC033030



Mat Black Gold



Titanium Yellow

- Construction :** In-Mold (1 piece)
- Fit System :** Comfit 1
- Ventilation :** 13 vents
- Features :** Neck reinforcement
Visor
- Weight :** 240 gr (M size)
- Certification :** CE - CPSC - AS
- Sizes :** XXS-M / S-XL

25



Blue Grey



Grey Burgundy



Silver Titan



Steel Grey



LAZER[®]
H E L M E T S

Topaz : BLC032010

LAZER ADVANTAGE

- In-Mold
- Turnfit
- Starter pack with elegance

26



Silver Metal

Construction : In-Mold (1 piece)**Fit System :** Turnfit**Ventilation :** 12 vents**Features :** Sealed pads

Visor

Weight : 300 gr**Certification :** CE - CPSC**Sizes :** XS-M / L-XL

Blue Metal



Black Metal



Red

WORDS MEAN NOTHING STYLE IS EVERYTHING

One Crossbones : BLC031050 - One Blason : BLC031030 - One Imperial : BLC031040

LAZER ADVANTAGE

- Trendy graphics
- All round protection

ONE

Blason



White Pearl

27

Imperial

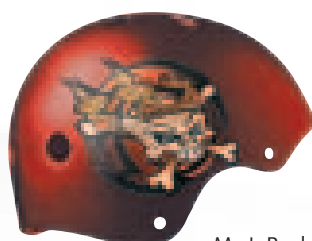


Mat Steel Grey

Crossbones



Mat Blue



Mat Red

Construction :	Technopolymer injected
Ventilation :	11 vents
Weight :	395 gr
Certification :	CE - CPSC
Sizes :	XS-S / M-L / XL-XXL

LAZER[®]
H E L M E T S

STANDARDS BY WHICH ALL OTHERS ARE

Factory Rider Carbon Cubic : BLC023030 - Factory Rider : BLC023020

LAZER ADVANTAGE

- Carbon Dynema Shell
- RBS®
- Morpho System
- Lightweight



FACTORY RIDER

Construction : Carbon Dynema Fiber Composite
Fit System : Quick Release buckle
Ventilation : 16 vents
Features : RBS®

Morpho System
1 set extra pads
Quick Release buckle
Stabilizer
Wide angle visor
Wide viewing
Aluminium screws
Helmet bag

Weight : 1000 gr
Certification : CE
Sizes : S-M / L-XL



Carbon Cubic



Blue White Black



MEASURED

Excalibur : BLC023010

LAZER ADVANTAGE

- Fiberglass shell
- RBS®
- 5 sizes
- Lightweight



Black

White

EXCALIBUR

Construction : Fiberglass Composite

Fit System : Double D ring buckle

Ventilation : 16 vents

Features : RBS®

Helmet bag

Weight : 1000 gr

Certification : CE

Sizes : XS / S / M / L / XL



Morpho System : The Morpho System is a completely detachable, washable interior that perfectly adjusts to the rider's head shape.

Carbon Dynema : Provides optimal resistance to shocks. This is the premier material in the world of cycling and is the basis for F1 helmets. Carbon Dynema makes the helmet up to 800gr lighter than other Downhill helmets, without compromising safety standards.

Quick Release : This buckle makes it possible to click the helmet open with a single movement.

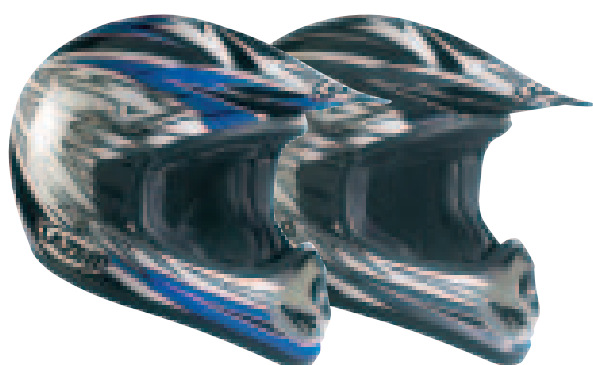
RBS®: Aluminium reinforcement ring that gives extra protection from side impact.

29

Voltage : MLE015100

LAZER ADVANTAGE

- Fully removable interior



Black Blue

Black Grey

VOLTAGE

Construction : Technopolymer injected

Fit System : Double D ring buckle

Ventilation : Chin

Features : Removable and washable pads

Adjustable visor

Weight : 1450 gr

Certification : ECE 22.05 - DOT - AS 1698

Sizes : XS / S / M / L / XL



BEAUTY, MORE THAN SKIN

30



DEEP?

LADY EDITION

31

LAZER[®]
HELMETS

DON'T TAKE NO FOR AN ANSWER!

Genesis LDY : BLC025040



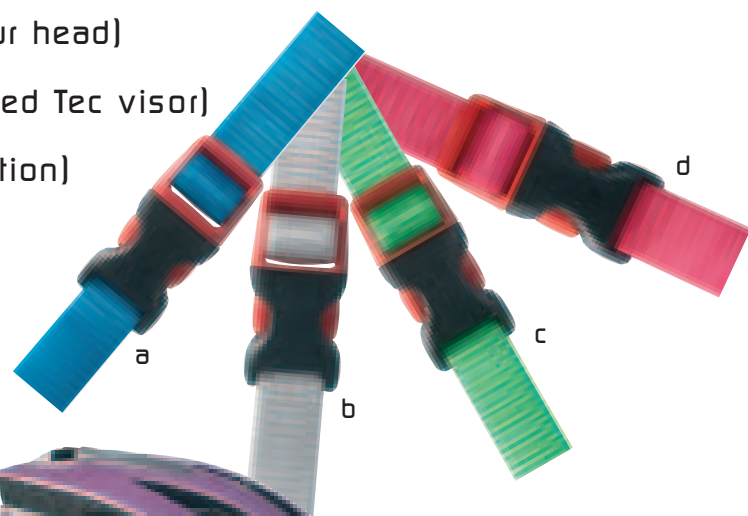
Ocean Blue White

GENESIS LDY

Refer to page Genesis XC

LAZER ADVANTAGE

- Rollsys® (Retention system)
 - One hand use
 - Due to not having a retention system at the back you can let your hair hang loose “pony tail friendly”
 - Integrated peripheral (round) mechanism
- Design (look)
 - Eurobike Design Award
 - New headform (perfect fit around your head)
 - Lady race designs (perfectly integrated Tec visor)
- RBS® (Rigid cage for multi-impact protection)
 - XL vents for better airflow
 - Minimum weight



b

Pearl White

c

Fashion Green White

d

Metallic Pink White

Blade LDY : BLC016070

Magma LDY : BLC027010

X3M LDY : BLC033020

BLADE LDY

Refer to page Blade XC

LAZER ADVANTAGE

- RBS® (Rigid cage for multi-impact protection)
- XL vents for better airflow
- Minimum weight



Ice Blue White

MAGMA LDY

Refer to page Magma

LAZER ADVANTAGE

- A real High Tech Helmet
- 21 vents
- Weather cap



Mat Pink Carbon

33

X3M LDY

Refer to page X3M

LAZER ADVANTAGE

- Light, lighter, lightest
- Back vents
- Super value for money helmet



Black Green

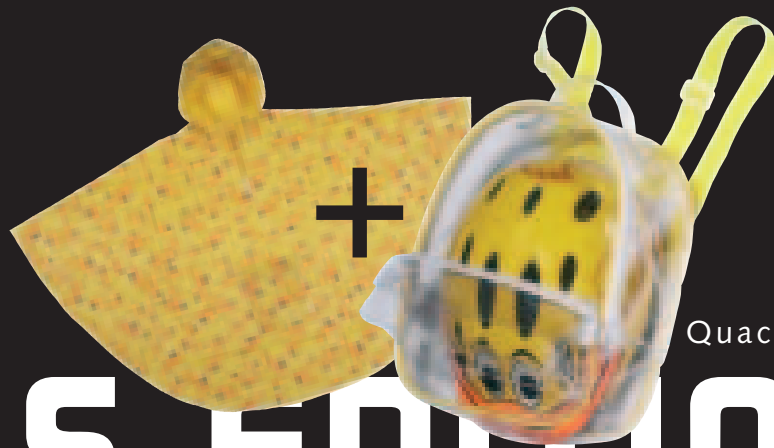
LAZER[®]
H E L M E T S

COMPLETE PROTECTION

34

LAZER[®]
HELMETS





Quack

KIDS EDITION

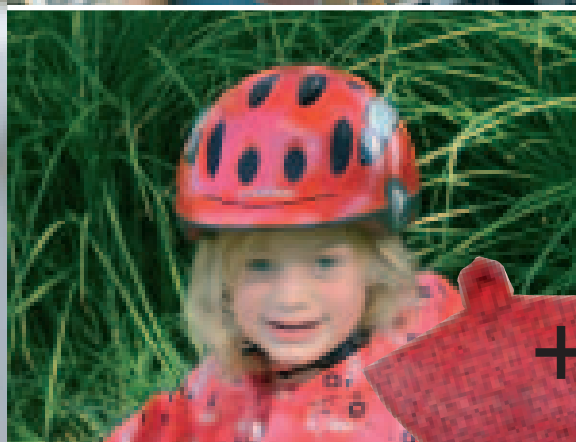
Max Pack : BLC028040

MAX PACK



Pink Dream

35

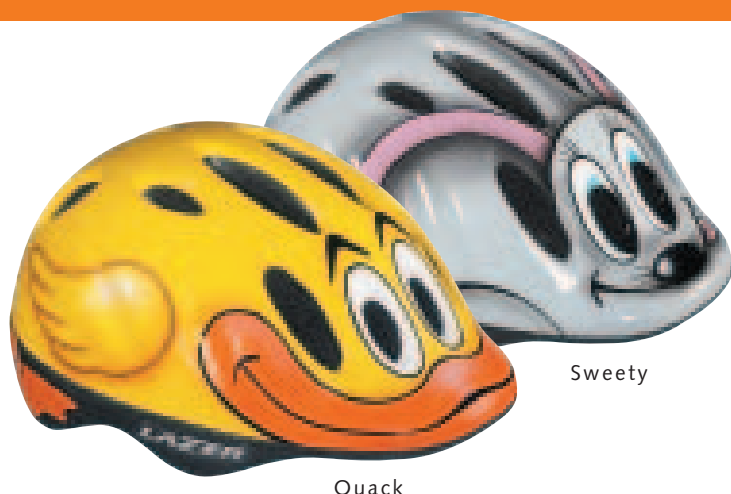


Buggy

MAKING SAFETY FUN!

MAX

Max : BLC028010



Quack

Sweety

LAZER ADVANTAGE

- Light
- Optimal ventilation
- Easy retention systems
- Cool graphics



Pink Dream



Pretty Car



Police



Buggy

36

Construction : Glue on**Fit System :** Comfit 3

NEW Swiss Turnfit (Max Deluxe only)

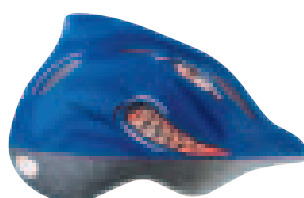
Ventilation : 11 vents**Features :** Insect net

Reflective stickers

Weight : 235 gr**Certification :** CE - CPSC**Sizes :** Unisize (49-56 cm)

Max Deluxe : BLC028030

MAX DELUXE



Shark



Dolphin



Fireman

Cute Pony



Completely detachable, washable interior which perfectly adjusts to the rider's head shape



Reflective stickers for increased safety



Perfit: The ultimate one hand fit system, built-in within the helmet design



Insect net



Comfit1 offers a quick & comfortable sizing



In-molded reinforcement structure



Comfit 2 offers a quick & comfortable sizing



Double D ring buckle



Comfit 3 offers a quick & comfortable sizing



Quick Release buckle



Rigidity Brace System: Rigid cage for a superior helmet resistance against multi impacts



Rollsys® (patented)
Lazer Exclusivity! Simply control the size and the comfort by turning the red button on the top of the helmet



Designed with a special neck reinforcement



Turnfit: "to adapt the fit within the helmet in a twist"



Strap divider



Featherlight



Weather cap



Visor

Model	cm	47	48	49	50	51	52	53	54	55	56	57	58	59	60	61	62	63	64		
Genesis				XXS-M									L-XL								
Blade							XS-M				L-XL										
Magma							S-XL														
Big Magma																XL-XXL					
Devil								S-XL													
Big Devil																XL-XXL					
X3M				XXS-M									S-XL								
Topaz							XS-M						L-XL								
Max			Unisize																		
Factory Rider							S-M						L-XL								
Excalibur								XS		S		M		L		XL					
X5 Voltage								XS		S		M		L		XL					
One				XS-S							M-L			XL-XXL							
Chrono 3							Unisize														

LAZER[®]
H E L M E T S



www.lazerhelmets.com

Cross HM SA

Rue Andre Dumont, 3 - B-1435 Mont-St-Guibert - Belgium
Tel: +32 (0) 3 213 32 52 - Fax: +32 (0) 3 226 42 63 - Mail: corporate@lazerhelmets.com