



PRODUCT UPDATE **09.2007**

## MANKIND **NEWORLD** FRAME



Globe Bridge on chainstays



Embossed MK Logo



MK Bridge on seatstays

The new Mankind "NEWORLD" Frame is the newest Mankind frame, Which has been designed by Australian teamrider Andrew "Gee" Gregory. It features a very slim frame design with an integrated seatclamp, new shorter dropouts with sinkcuts on the inside, a seatstay bridge with an MK cutout logo and a World Bridge on chain stays with "World" cutout logo. The Newworld is very light and reliable due to it's double butted tubing. It offers internal headset, mid size bb and comes with removable Gyro tabs and integrated seatclamp. There are four top tube lengths to chose from and it comes in six colour ways.

Material:	Full 4130 chromoly Sanko Japanese tubing		
Lengths:	20,5tt, 20,7tt, 20,9tt, 21,1tt		
TT:	ø34.9mm x 1.1t*0.8t*1.1t	Heat-treated double butted	
DT:	ø36.1mm x 1.2t*0.9t*1.2t	Heat-treated double butted	
SS:	ø19.0mm x 1.0t*0.7t*1.0t	Heat-treated double butted	
CS:	ø19.0mm x 1.0t	Heat-treated	
Seattube:	single butt (1.4t*1.1t)	Heat-treated	Angle: 71°
Seattube-height:	233mm		
Headtube:	Heat-treated 74.5° Int. Headset, rem. Gyro tabs		
Bottom bracket:	Heat-treated Mid Size BB		
Dropouts:	Heat-treated Lasercut, 5mm, 4130 cr-mo, 14mm slots		
Chainstaylength:	13,75" to 14,25"		
BB Height:	35mm / 1,38" above axelline		
Weight:	2,2kg		
U-Brake:	on seat stays-Angled cablestopper, for better cablerouting to U-brake.		

### Specials:

- CNCed MK Logo on Headtube
- Rem. Gyro tabs included
- New Shorter Dropouts with sink cuts in inside of dropouts
- Integrated Seatclamp.
- MK Bridge on seat stays with "MK" cutout logo
- World Bridge on chain stays with "World" cutout logo

### Colours:

Mint green, matt black, white, shining raw, silver grey, metallic coffee

Newworld Mint Green



Newworld Black



Newworld Silver Grey



Newworld Shining Raw





## MANKIND *ASADI PHASE 2* FORK



Asadi Forks have a one piece heat treated machined steertube, double butted spiral fluted fork legs & are out of 100% heat treated Japanese 4130 chromoly.

- Steertube:** One piece CNC machined steertube, made out of heat treated full Japanese 4130 chromoly.  
Length: 165mm
- Forklegs:** Double butted-spiral fluted tubing 1 1/4" - inch forklegs made out of full heat-treated Japanese 4130 chromoly tubing  
Length: 314mm
- Dropouts:** Lasercut 5mm heat-treated 4130 chromoly dropouts. Offset: 35mm  
Available with 3/8" or 14mm slots
- Top Bolt:** Lightweight 7075 alloy hollow topbolt  
Available with or without U-brake mounts
- Weight:** 1020gr (2.38lbs)
- Colours:** black, light silvergrey, white, pistachio

### Mankind *Fork Top Caps*

AL6061 alloy top cap, anodized colors with laser etched Mankind logo  
Colours: black, silver, white, gold, green



## MANKIND *ASADI PHASE 2* GRIPS



Made of Soft Krayton rubber  
Comes with plastic barends  
Colours: black, brown, green, purple



## MANKIND **ASADI** PHASE 2 SEAT



Mankind Seats are mid-sized, have light foam padding, hollow chromo rails, and a nonslip cover material with codura material in the rear for protection. Weight: 295gr/10.5oz. Colours: black, white, brown

## MANKIND **NEWORLD** SEAT



Mankind Seats are mid-sized, have light foam padding, hollow chromo rails, and a nonslip cover material with codura material in the rear for protection. Weight: 295gr/10.5oz. Colours: black, white, brown

## MANKIND **GLOBE** SEAT



Mankind Seats are mid-sized, have light foam padding, hollow chromo rails, and a nonslip cover material with codura material in the rear for protection. Weight: 295gr/10.5oz. Colours: black, white, brown



## MANKIND **MK SLIM** SEAT



Mankind Seats are mid-sized, have light foam padding, hollow chromo rails, and a nonslip cover material with codura material in the rear for protection. Weight: 295gr/10.5oz. Colours: black, white, brown

## MANKIND **NEWORLD SLIM** SEAT



Mankind Seats are mid-sized, have light foam padding, hollow chromo rails, and a nonslip cover material with codura material in the rear for protection. Weight: 295gr/10.5oz. Colours: black, white, brown

## MANKIND **MK SEAT** - NEW COLOUR



Mankind Seats are mid-sized, have light foam padding, hollow chromo rails, and a nonslip cover material with codura material in the rear for protection. Weight: 295gr/10.5oz. Colours: black, white, brown

## MANKIND **ARCHANGEL** STEM



Made of AL 7075-T6, the innerpart is drilled out for lessweight and comes with hollow bolts. 51mm reach. Weight: 315gr. Gyro plate included. Colours: black, silver, green, gold, white

## MANKIND **ARCHANGEL** SEATCLAMP



Made of CNCed 6061 aluminium. It is lightweight 28gr/0.99oz CNCed AL 6061 Weight: 28gr/0.99oz - Colours: black, silver, green, gold, white



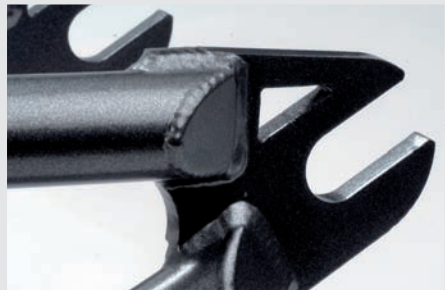
## MANKIND *EVOLUTION* SEATCLAMP - NEW VERSION



Made of CNCed 6061 aluminium .  
It is lightweight 28gr/0.99oz  
CNCed AL 6061  
weight : 28gr/0.99oz  
Colours: black, silver, green, gold, white



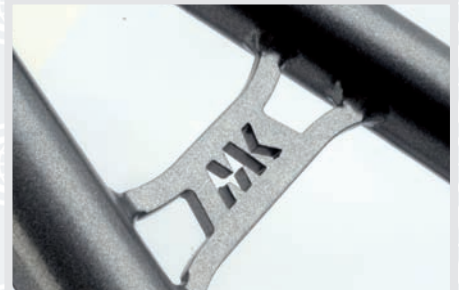
## MANKIND *ASADI PHASE 2* FRAME



New Shorter Dropouts



Integrated Seatclamp



MK Bridge on seatstays

Material:	Full 4130 chromoly Sanko Japanese tubing		
Lengths:	20,2tt , 20,5tt , 20,8tt , 21,0tt		
Colours:	Black, white, shining raw, silver grey, pistachio		
TT:	ø34.9mm x 1.1t*0.8t*1.1t	Heat-treated	Angle: 70°
DT:	ø36.1mm x 1.2t*0.9t*1.2t	Heat-treated	
SS:	ø19.0mm x 1.0t*0.7t*1.0t	Heat-treated	
CS:	ø20.5mm x 1.0t	Heat-treated	
Seattube:	single butt (1.4t*1.1t)	Heat-treated	

### Integrated Seatclamp with titanium bolt

Headtube:	Heat-treated 74.5° Int. Headset, rem. Gyro tabs
Bottom bracket:	Heat-treated Mid Size BB
Dropouts:	New and shortened dropouts Heat treated & lasercut, 5mm, 4130 cr-mo, 14mm slots
Chainstaylength:	13,75" slammed to 14,25" centered
BB Height:	35mm / 1,38" above axelline
Weight:	2,4kg
U-Brake:	on chainstays, short U-Mounts make 25t-9t gearing possible. Angled cablestopper with bolt, for better cablerouting to U-brake.

### Specials:

- Int. Headset, Mid Size BB 19mm & Rem. Gyro tabs included
- New Shorter Dropouts
- Integrated Seatclamp
- MK Bridge on seatstays with cutout "MK" logo.

Asadi Phase 2 | Black



Asadi Phase 2 | White



Asadi Phase 2 | Pistachio





Asadi Phase 2 | Shining Raw



Asadi Phase 2 | Silver Grey



# MANKIND **ARCHANGEL** STEM



CNCed AL 7075-T6

Innerpart drilled out

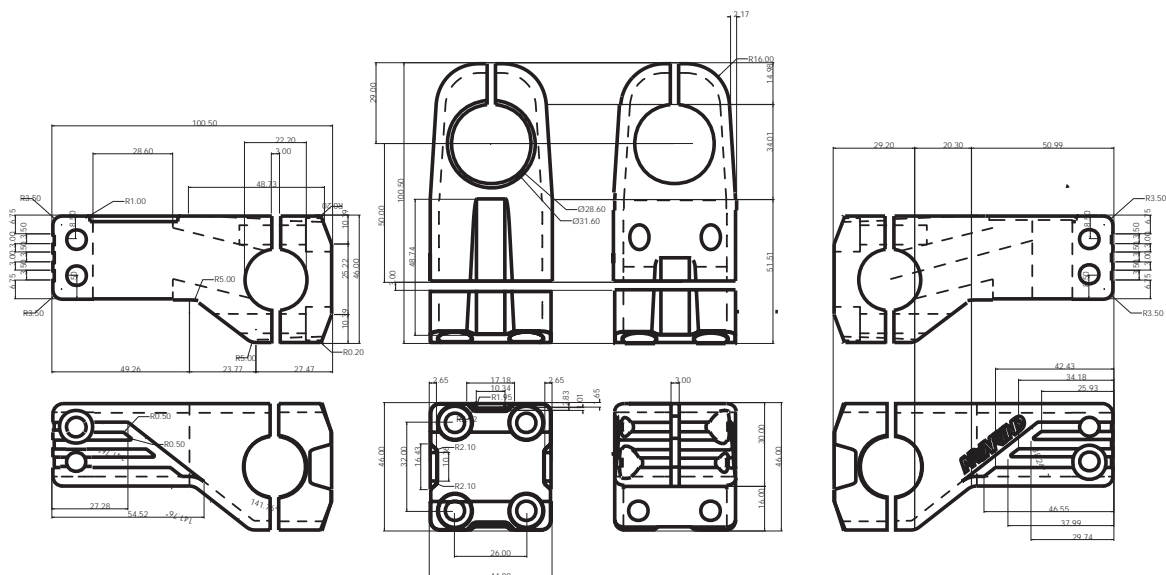
50mm reach

Machined MK Logo on Frontplate

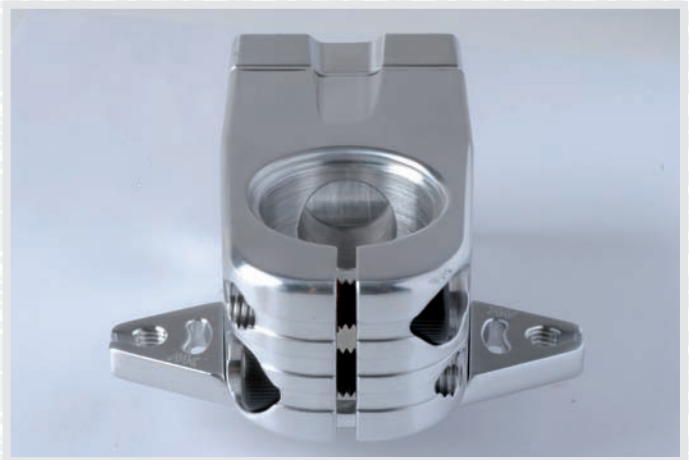
Weight: 328gr / 11.57oz

Comes with laseredged Gyro plate

Colours: black, polished silver, green, gold, white







## MANKIND **ARCHANGEL** HANDLEBAR



**designed by Jeff Klugiewicz**

The Mankind Archangel Bars are designed by Jeff Klugiewicz. Light and strong due to their full heat treated 11 butted 100% Cr-Mo tubing.

They come in high rise 8.0" and normal rise 7.75", with a backsweep of 12° and an upsweep of 2°.

### **Mankind Archangel Handlebar 8.0"**

Tubing: 11 Butted 100% heat-treated Cr-Mo- 7/8"  
Weight: 750gr / 1,65 lbs  
Backsweep: 12° - Upsweep: 2°  
Raise: 8" / 200,32mm, 7.75" / 19,05mm  
Width: 673.1mm / 26,5"  
Bend/bend: 319 mm / 12,56"  
Crossbarwidth: 251,4mm / 9,9"  
Colours: black, white, silver grey

### **Mankind Archangel Handlebar 7.75"**

Tubing: 11 Butted 100% heat-treated Cr-Mo- 7/8"  
Weight: 750gr / 1,65 lbs  
Backsweep: 12° - Upsweep: 2°  
Raise: 7.75" / 19,80mm  
Width: 661mm / 26,02"  
Bend/bend: 312,8mm / 12,31"  
Crossbarwidth: 245,7mm / 9,67"  
Colours: black, white, silver grey



Archangel Bar | White



Archangel Bar | Black



Archangel Bar | Silver Grey

