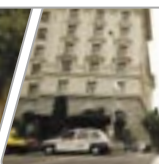


N 37 56.089 | W 122 34.016





RIDE HERE  
+ 05



LOCATION IS EVERYTHING.

N 37 49.936 | W 122 28.374



We have been building and riding bikes in Marin County, California since 1986. The unique geography found here makes Marin the perfect location for designing, riding and refining our extensive range of bikes.

From the Pacific Ocean view trails on Mt. Tam to the urban streets of downtown San Francisco, every possible riding terrain can be found in our backyard. This diverse natural testing ground inspires us to develop bikes that transcend our location and perform anywhere on the planet.

Wherever you are, whatever your inspiration, we have a bike for you.

Our location is Marin County, what's yours?

**MARIN**  
→ MARINBIKES.COM



WHERE DO YOU WANT TO RIDE?

MOUNT TAMALPAIS | ELV. 2,751 FT

MOUNTAIN, ROAD, STREET AND PATH. ENJOY.

GOLDEN GATE PARK | ELV. 2,751 FT

+ MTN FRS

8 MOUNTAIN FRS



XC FRS

12

Full Suspension & Adjustable Travel Bikes



TARA FRS

16



AXC

20



ALLOY HT

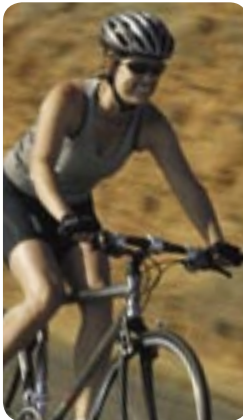
24

Front Suspension Hardtail Bikes



STEEL HT

30



ALP

34

Flat Bar Road Bikes



ROAD

38

Race & Touring Bikes



URBAN

44

Rigid Performance & Suspension Commuter Bikes



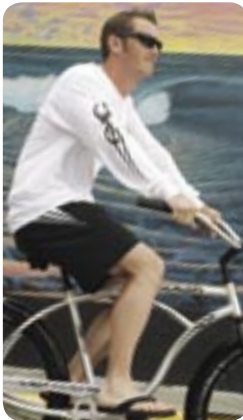
CITY

48



COMFORT

52



CRUISERS

54

Comfort Oriented & Kid Specific Bikes



KIDS

56

+5

STEPS TO RIDE A MARIN

- 1 • CATEGORY : Choose the category that corresponds to where you will be riding
- 2 • SERIES : Select a series that matches your riding style
- 3 • MODEL : Identify the specific model with the components that suit your needs
- 4 • SIZE : Determine the frame size that fits your body
- 5 • RIDE : Visit your local Marin dealer and go for a test ride

Bike Locator

6 Find The Right Marin Bike for Your Ride

TECH: Quad-Link Suspension System

10 Moving Forward, Faster

TECH: TARA System

14 Multi-Tasking Isn't Just for Work Anymore

TECH: Frame Design

58 The Frame, It's The Foundation of Our Bikes

SPECS: Sizing Diagrams & Fitting

60 The Right Fit Makes The Ride

SPECS: Components & Geometry

60 The Difference Is In The Details

Dealer Locator

+ Visit Our Website



+ MTN FRS 8

+ MOUNTAIN HT 18

+ ROAD 32

+ STREET 42

+ PATH 50

XC FRS

TARA FRS

AXC

ALLOY HT

STEEL HT

ALP

ROAD

URBAN

CITY

COMFORT

CRUISERS

KIDS

MOUNT VISION PRO

12

ATTACK TRAIL

16

ROCKY RIDGE

20

INDIAN FIRE TRAIL

24

PINE MOUNTAIN

30

HIGHWAY ONE

34

STELVIO

38

POINT REYES

44

SAUSALITO

46

REDWOOD

52

DRAKES BEACH

54

BAYVIEW TRAIL

56

MOUNT VISION

12

WOLF RIDGE

16

WILDCAT TRAIL

22

NAIL TRAIL

26

ELDRIDGE GRADE

31

MILL VALLEY

36

SAN MARINO

40

NOVATO

45

SAN ANSELMO

48

STINSON

53

HEARTS DESIRE

55

HIDDEN CANYON

56

RIFT ZONE

13

ROCK SPRINGS

17

B-17

22

PALISADES TRAIL

26

BEAR VALLEY

31

LUCAS VALLEY

36

VERONA

40

MUIRWOODS

45

SAN RAFAEL

48

EAST PEAK

13

NORTHSIDE TRAIL

23

HAWK HILL SE

27

FAIRFAX

37

ARGENTA

41

LARKSPUR

49

HAWK HILL

27

BOBCAT TRAIL

28

BOLINAS RIDGE

28

PIONEER TRAIL

29

RIDE HERE

+ 05

## SAVE TIME. RIDE MORE.

A quick overview of our entire 2005 line in one view, our Bike Locator is designed to save you time. 47 new bikes to choose from, still only 24 hours in a day.

### BIKE LOCATOR NOTES:

28 BIKE DETAIL PAGE NUMBER

1 MODEL LEVEL:

• LEVEL 1 IS THE TOP OF LINE

LEVEL IS BASED ON:

- COMPONENT QUALITY
- OVERALL WEIGHT
- NUMBER OF BIKE MODELS IN THE SERIES

W\* WOMEN'S FRAME OPTION AVAILABLE



DESIGNED IN MARIN COUNTY, CALIFORNIA

**MARIN**  
→ MARINBIKES.COM



# + MOUNTAIN FRS

RIDE HERE  
+ 05

N 37 53.365 | W 122 32.988



+ XC

## CARRY YOUR SPEED, DROP THE WEIGHT.

With our award winning Quad-Link rear suspension system at its core, the light weight XC FRS series is designed to power up climbs and flow through high-speed descents. Ride at the next level, ride a Marin Quad-Link XC FRS.



+ TARA

**ADAPT TO THE TERRAIN AHEAD.** The TARA Quad-Link suspension system features a range of travel settings that can easily be switched with our patented quick-release lever. Four to six inches of travel, it's your choice depending on the terrain ahead.



# + TECH: *QUAD-LINK* SUSPENSION SYSTEM

## SIMPLICITY CAN BE COMPLEX.

In order to get there fast you have to go forward fast. Most suspension systems disrupt a bike's entire forward momentum by allowing the impact of even the smallest bumps to redirect the rear portion of the bike directly upwards in effort to clear the obstacle in it's path. The Quad-Link system is smarter than that.

Utilizing its **INTELLIGENT WHEEL PATH**, the Quad-Link swingarm instantly increases the bike's overall wheel base thus allowing the front end of the bike, and its momentum, to continue forward uninhibited.

Guided by the **INSTANTANEOUS PIVOT CENTER** the swingarm efficiently moves the rear wheel over the obstacle. Always in contact with the terrain, the wheel takes the fastest and shortest path through the terrain and ultimately returns to rejoin the front end's forward momentum.

The QUAD-LINK design is so named because it uses a 4-Bar Linkage and the single curve of the wheel path is defined by a Quadratic Equation.

$$x = 0.0021y^2 - 0.1979y - 0.001$$

IT SOUNDS COMPLEX, BUT  
IT'S SIMPLY EFFICIENT.



CNC QUICK LINKS



PRECISION MONOCOQUE ROBOTIC WELDS

### INSTANTANEOUS PIVOT CENTER

The Instantaneous Pivot Centre (IPC) and its movement during the suspension travel determines the suspension characteristics of the bike and, therefore, how it responds to terrain and rider input. This intelligent system constantly adjusts its IPC. So wherever the suspension is in its travel the IPC is in the optimum position, providing maximum suspension performance and pedalling efficiency.

### INTELLIGENT WHEEL PATH

By allowing the wheel to move backwards early in its travel, the QUAD-Link system's ability to respond to square edged bumps is unparalleled. Even the smallest bump activates the suspension, keeping the wheel in constant contact with the ground and improving traction. About one-third of the way through the travel, the wheel's arc returns toward the bottom bracket, optimizing chaingrowth and virtually eliminating pedal induced feedback.

### INTELLIGENT WHEEL TO SHOCK RATIO

Most suspension bikes drive the shock off a rotating linkage with a fixed pivot center. This has the effect of making the shock movement proportional to the wheel movement throughout the travel. With the Quad-Link system the shock is driven directly off the swingarm. This allows us to tune our shock to move proportionally less early in the travel, making the suspension incredibly sensitive. As the swingarm is compressed the wheel to shock ratio decreases, preventing the bike from blowing through its travel.

### CHAINGROWTH

Chaingrowth occurs when the distance between the center of the bottom bracket and the center of the rear wheel increases during rear suspension movement. Too little chaingrowth will make the suspension bob and cause the wheel to lose traction. Too much chaingrowth will cause the bike to rise on every pedal stroke and transfer the shock of any big bumps through the transmission to the rider - this is known as pedal feedback. The QUAD-Link system has been designed to optimize chaingrowth for maximum efficiency throughout the suspension travel, generating enough early on in its travel to pull the wheel into the ground and providing fantastic traction over small to medium bumps. Further through its travel, the QUAD-Link's chaingrowth gradually reduces to zero: virtually eliminating negative pedal feedback.

### QUICK LINKS

Shorter links are faster to react, lighter and considerably stiffer. Our links are only 35mm long. The high speed at which the links can move allows rapid controlled shifts in the IPC. Additionally, the links are outside the wheel circumference, allowing allowing us to anchor them to the frame in two places: on the seat tube and down tube. This is a considerably stiffer method of construction than having links connected to each other with small bolts inside the wheel circumference.

### PIVOT BEARINGS

We only use Full Compliment radial bearings in the suspension pivots. These bearings are designed specifically for high load, low rotation speed applications - rather than the more commonly used wheel bearings which are designed to work effectively only when they are spinning at a high speed. All our pivot bearings are double sealed with a viscous Molycote grease which keeps out grit and grime. This unique bearing system will give a lifetime of super plush, stiction free performance.

### MONOCOQUE CONSTRUCTION

Simply symmetrical. Following our straightforward approach of form follows function, the QUAD-Link system has clean, symmetrical lines. No unsightly braces or complex, bolt-on devices. The totally balanced, symmetrical monocoque assembly gives uncompromised handling.



**MARIN**  
→ MARINBIKES.COM

QUAD-LINK XC FRS DEMO BIKES ARE AVAILABLE, ASK YOUR LOCAL DEALER FOR DETAILS.

COMPONENT & GEOMETRY SPECS PG 62



# + XC FRS

+ Dialed-in for high performance, the Quad-Link XC FRS series is designed for the discerning rider. Top quality components from FSA, Easton and Crank Brothers prove the point. Talk less, ride more.



## MOUNT VISION PRO

### ANODIZED BLACK

1	FRAME
2	6061 Aluminum Twin Monocoque Front, 4" Travel
3	Lightweight Monocoque 4-Bar Link Aluminum Swingarm
4	with Disc Mounts
REAR SUSPENSION	
Fox Float RP3, with Rebound Adjustment and 3 Position ProPedal Lever Adjustment	
FORK	
Fox Fox FRLT, 100mm of Travel, with Rebound Adjustment, Lockout, Blow off Threshold Adjustment and Air Spring Preload	
SHIFTERS	
Shimano XTR	
BRAKES	
Shimano XTR Hydraulic Disc	
FRONT DERAILLEUR	
Shimano XTR	
REAR DERAILLEUR	
Shimano XTR	
HUBS	
DT 240S, Disc, Centerlock Compatible, 32 Hole	
RIMS	
Mavic XC 717 Disc, 32 Hole	
CRANKSET	
Shimano XTR, 44/32/22	

## RIFT ZONE

### MATTE STEEL GRAY

1	FRAME
2	6061 Aluminum Twin Monocoque Front, 4" Travel
3	Lightweight Monocoque 4-Bar Link Aluminum Swingarm
4	with Disc Mounts
REAR SUSPENSION	
Fox Float R, with Rebound Adjustment	
FORK	
Fox Fox FR, 100mm of Travel, with Rebound Adjustment and Air Spring Preload	
SHIFTERS	
Shimano Deore	
BRAKES	
Avid Juicy 5 Hydraulic Disc	
FRONT DERAILLEUR	
Shimano Deore	
REAR DERAILLEUR	
Shimano LX	
HUBS	
WTB Laser Disc Lite, 32 Hole	
RIMS	
Mavic XM 317 Disc, 32 Hole	
CRANKSET	
TruVativ Firex, 44/32/22 with 2 Alloy Chainrings	



## MOUNT VISION

### ANODIZED BLACK

1	FRAME
2	6061 Aluminum Twin Monocoque Front, 4" Travel
3	Lightweight Monocoque 4-Bar Link Aluminum Swingarm
4	with Disc Mounts
REAR SUSPENSION	
Fox Float RP3, with Rebound Adjustment and 3 Position ProPedal Lever Adjustment	
FORK	
Fox Fox FRL, 100mm of Travel, with Rebound Adjustment, Lockout and Air Spring Preload	
SHIFTERS	
Shimano XT	
BRAKES	
Avid Juicy 7 Hydraulic Disc	
FRONT DERAILLEUR	
Shimano XT	
REAR DERAILLEUR	
Shimano XT	
HUBS	
WTB Laser Disc Lite, 32 Hole	
RIMS	
Mavic XM 317 Disc, 32 Hole	
CRANKSET	
Shimano XT, 44/32/22 with Hollowtech II Arms	

## EAST PEAK

### MATTE COSMIC BLUE

1	FRAME
2	6061 Aluminum Twin Monocoque Front, 4" Travel
3	Lightweight Monocoque 4-Bar Link Aluminum Swingarm
4	with Disc Mounts
REAR SUSPENSION	
Fox Float R, with Rebound Adjustment	
FORK	
Manitou Axel Super, 90-120mm of Travel, with Rapid Travel Wind Down, and Rebound Adjustment	
SHIFTERS	
Shimano Deore	
BRAKES	
Hayes Sole Hydraulic Disc, with New V6, 6" Rotors	
FRONT DERAILLEUR	
Shimano Deore	
REAR DERAILLEUR	
Shimano LX	
HUBS	
Shimano Disc, 32 Hole	
RIMS	
Mavic XM 117 Disc, 32 Hole	
CRANKSET	
TruVativ Five D, 44/32/22 with 1 alloy chainring	





# TARA SYSTEM

TRAVEL AND RIDE HEIGHT ADJUSTMENT SYSTEM

## 1 BIKE, 3 SETTINGS, ANY TRAIL.

No matter what terrain you encounter on the ride, our award winning TARA system allows you to instantly adjust your bike to suit the trail ahead.

Building upon the QUAD-LINK suspension system, we have developed the TARA (Travel And Ride-height Adjustment) system to create our most versatile full suspension bikes ever. This cutting edge design utilizes the Quad-Link Instantaneous Pivot Center to adjust to all types of trail conditions.

### INFINITELY CUSTOMIZABLE

Adjust infinitely between 4" and 6" travel for power climbing or hammering technical single track. The TARA System is true flexibility in a light-weight, easy to use, tool free system

### TRAIL SPECIFIC TUNING

Altering the position of the TARA quick release lever varies rear suspension travel, as well as the bottom bracket height. It also varies the bump characteristics of the damper, from a rising rate in the 4" setting, through linear at 5", to falling rate at 6". These geometry and shock rate combinations have been carefully tuned to complement the travel settings.

## What's faster?

Maintaining and transporting 3 bikes for different trails,

or flipping a quick-release? **TARA** wins hands down.



TARA QUICK-RELEASE LEVER



MASSIVE TRACTION WITH NO SUSPENSION BOB

### TARA: TECH DETAILS

#### INSTANTANEOUS PIVOT CENTER

The Instantaneous Pivot Centre (IPC) and its movement during the suspension travel determines the suspension characteristics of the bike and, therefore, how it responds to terrain and rider input. Our intelligent system constantly adjusts its IPC. Wherever the suspension is in its travel the IPC is in the optimum position, providing maximum performance and pedalling efficiency.

#### INTELLIGENT WHEEL PATH

By allowing the wheel to move backwards early in its travel, the QUAD-Link system's ability to respond to square edged bumps is unparalleled. Even the smallest bump activates the suspension, keeping the wheel in constant contact with the ground and improving traction. About one-third of the way through the travel, the wheel's arc returns toward the bottom bracket, optimizing chaingrowth and virtually eliminating pedal induced feedback.

#### INTELLIGENT WHEEL TO SHOCK RATIO

Most suspension bikes drive the shock off a rotating linkage with a fixed pivot center. This has the effect of making the shock movement proportional to the wheel movement throughout the travel. With the Quad-Link system the shock is driven directly off the swingarm. This allows us to tune our shock to move proportionally less early in the travel, making the suspension incredibly sensitive. As the swingarm compresses the wheel to shock ratio decreases, preventing the bike from blowing through its travel.

#### CHAINGROWTH

Chaingrowth occurs when the distance between the center of the bottom bracket and the center of the rear wheel increases during rear suspension movement. Too little chaingrowth will make the suspension bob and cause the wheel to lose traction. Too much chaingrowth will cause the bike to rise on every pedal stroke and transfer the shock of any big bumps through the transmission to the rider - this is known as pedal feedback. The Marin QUAD-Link system has been designed to optimize chaingrowth for maximum efficiency throughout the suspension travel, generating enough early on in its travel to pull the wheel into the ground and providing fantastic traction over small to medium bumps. Further through its travel, the QUAD-Link's chaingrowth gradually reduces to zero: virtually eliminating pedal feedback.

#### QUICK LINKS

Shorter links are faster to react, lighter and considerably stiffer. Our links are only 35mm long. The high speed at which the links can move allows rapid controlled shifts in the IPC. Additionally, the links are outside the wheel circumference, allowing allowing us to anchor them to the frame in two places; on the seat tube and down tube. This is a considerably stiffer method of construction than having links connected to each other with small bolts inside the wheel circumference.

#### PIVOT BEARINGS

We only use Full Compliment radial bearings in the suspension pivots. These bearings are designed specifically for high load, low rotation speed applications - rather than the more commonly used wheel bearings which are designed to work effectively only when they are spinning at a high speed. All our pivot bearings are double sealed with a viscous Molycote grease which keeps out grit and grime. This unique bearing system will give a lifetime of super plush, stiction free performance.

#### MONOCOQUE CONSTRUCTION

Simply symmetrical. Following our straightforward approach of form follows function, the QUAD-Link system has clean, symmetrical lines. No unsightly braces or complex, bolt-on devices. The totally balanced, symmetrical monocoque assembly gives uncompromised handling.





# + TARA FRS

+ Four to six inches of travel with the flip of a quick-release lever. When the terrain changes, the TARA Quad-Link system can adapt. Extremely versatile, the TARA suspension system is the one bike you'll want for any situation.



ATTACK TRAIL	
ANODIZED BLACK	
1	FRAME
2	6061 TARA Aluminum Twin Monocoque Front, New 6061 TARA 4"-6" Travel Monocoque 4 Bar Link Aluminum Swingarm with Disc Mounts
3	REAR SUSPENSION
	Fox Float RP3, with Rebound Adjustment and 3 Position ProPedal Lever Adjustment
	FORK
	Fox Talas RLC, 90-130mm
	SHIFTERS
	Shimano XT
	BRAKES
	Hayes HFX Mag Hydraulic Disc, with New V8, 8" Front and New V6, 6" Rear Rotors
	FRONT DERAILLEUR
	Shimano XT
	REAR DERAILLEUR
	Shimano XT
	HUBS
	WTB Laser Disc Lite, 32 Hole
	RIMS
	Mavic XC 717 Disc, 32 Hole
	CRANKSET
	Shimano XT, 44/32/22 with Hollowtech II Arms



ROCK SPRINGS	
MATTE STEALTH BLUE	
1	FRAME
2	6061 TARA Aluminum Twin Monocoque Front, New 6061 TARA 4"-6" Travel Monocoque 4 Bar Link Aluminum Swingarm with Disc Mounts
3	REAR SUSPENSION
	Fox Float R, with Rebound Adjustment
	FORK
	Fox Vanilla R, 130mm
	SHIFTERS
	Shimano Deore
	BRAKES
	Hayes HFX-9 Hydraulic Disc, with New V8, 8" Front and New V6, 6" Rear Rotors
	FRONT DERAILLEUR
	Shimano Deore
	REAR DERAILLEUR
	Shimano Deore
	HUBS
	Shimano Disc, 32 Hole
	RIMS
	Mavic XM 117 Disc, 32 Hole
	CRANKSET
	TruVativ Five D, 44/32/22 with Power Spline



WOLF RIDGE	
MATTE COAL GRAY	
1	FRAME
2	6061 TARA Aluminum Twin Monocoque Front, New 6061 TARA 4"-6" Travel Monocoque 4 Bar Link Aluminum Swingarm with Disc Mounts
3	REAR SUSPENSION
	Fox Float RP3, with Rebound Adjustment and 3 Position ProPedal Lever Adjustment
	FORK
	Fox Float RL, 130mm
	SHIFTERS
	Shimano LX
	BRAKES
	Hayes HFX-9 Hydraulic Disc, with New V8, 8" Front and New V6, 6" Rear Rotors
	FRONT DERAILLEUR
	Shimano LX
	REAR DERAILLEUR
	Shimano XT
	HUBS
	WTB Laser Disc Lite, 32 Hole
	RIMS
	Mavic XM 317 Disc, 32 Hole
	CRANKSET
	TruVativ Stylo XR, 44/32/22 with 2 Alloy Chainring, with Giga X Drive Exterior BB system

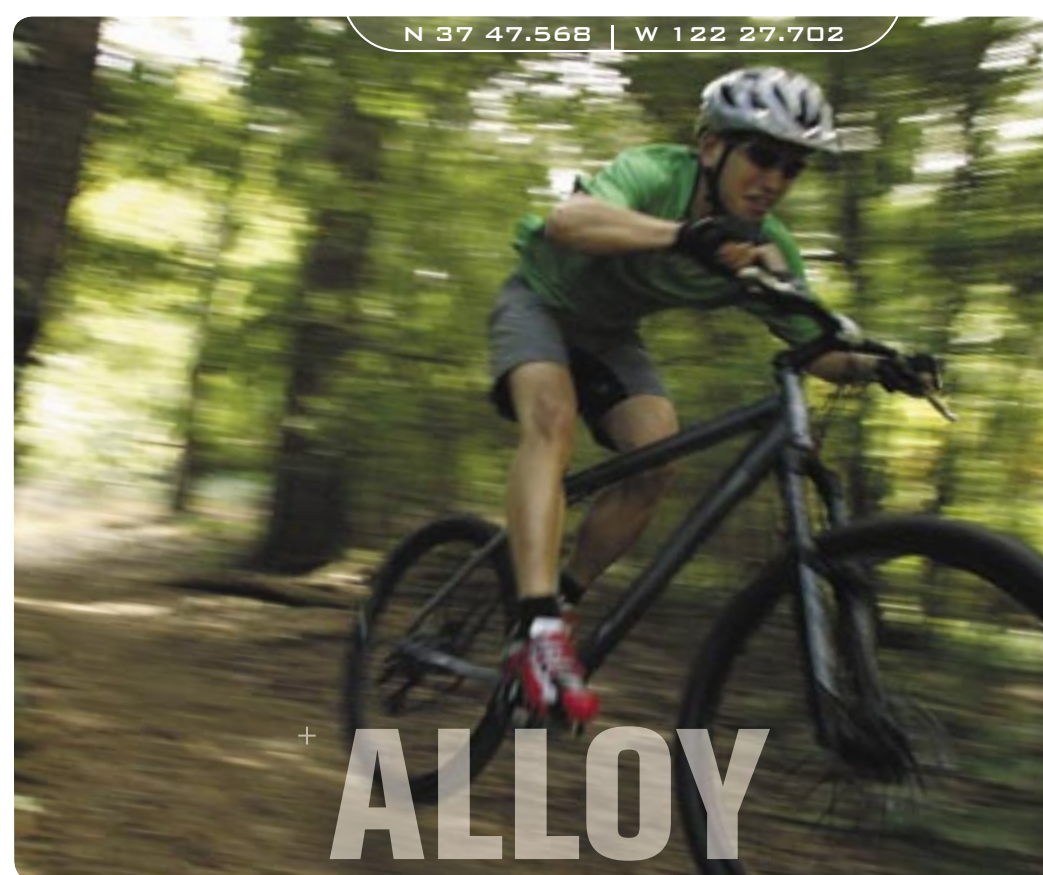






+ **AXC**

**FULL SPEED ATTACK.** The AXC series is designed and built to handle the relentless assault waged by today's aggressive riders. With long travel front suspension, hydraulic disc brakes and geometry tuned for hardcore terrain, the only limits are your own.



+ **ALLOY**

**TRAIL TRACKING RESPONSE.**  
Utilizing our custom EDGE tubing, the light-weight and extremely responsive Alloy HT series offers a wide range of models for every level of rider from beginner to pro.



+ **STEEL**

**THE FEEL OF STEEL.**  
Steel is still real in our books. Solid, reliable and naturally dampening, the Steel HT series has a precise and superior ride quality. If you are looking to hone your technique try a Steel HT, you'll feel the difference.



# + AXCHT

+ Founded on its reinforced, oversized 7005 Edge Plus tubing frame, the Rocky Ridge is a strong and well built machine. The Marzocchi Dirt Jumper III handles the big hits and hard landings while Hayes hydraulic disc brakes reel you back in. Ride fast, rock on.



N 37 59.248 | W 122 30.921



XXL FORGED DROPOUTS

REINFORCING HEADTUBE GUSSETS

HAYES HFX-9 WITH 8" ROTOR



## ROCKY RIDGE

MATTE COAL GRAY

1	FRAME	FRONT DERAILLEUR
2	7005 Aluminum, Oversize Edge Top and Oversize Edge Plus Down Tube, AXCHT Tri-Burner Seat and Chain Stays, CNC Seat and Chain Stay Bridges	Shimano Alivio
3		REAR DERAILLEUR
4		Shimano Deore
	FORK	HUBS
	Marzocchi Dirt Jumper III, 130mm of Travel and Preload Adjustment	Shimano Deore Disc, 32 Hole
	SHIFTERS	RIMS
	Shimano Alivio	WTB Dual Duty Freeride
	BRAKES	CRANKSET
	Hayes HFX-9 Hydraulic Disc, with New V8, 8" Rotors	Hussefelt 32/22 Steel and Rockring





# + AXCHT

+ Take a hit and stick it with an AXC. A reinforced and oversized 7005 Edge frame that's decked out with a trick collection of components makes for a ride that's somewhere between a Mack truck and a hot rod.



## WILDCAT TRAIL

MATTE BRONZE

1	FRAME
2	7005 Aluminum, Oversize Edge Top and Oversize Edge Plus Down Tube AXC XXL Tri-Burner Seat and Chain Stays, CNC Seat Stay Bridge
3	FORK
4	Marzocchi EXR Pro Coil, 120mm of Travel and Preload Adjustment
	SHIFTERS
	Shimano Alivio
	BRAKES
	Hayes HFX-9 Hydraulic Disc, with New V8, 8" Front, V6 6" Rear Rotors
	FRONT DERAILLEUR
	Shimano Alivio
	REAR DERAILLEUR
	Shimano Deore
	HUBS
	Shimano Disc, 32 Hole
	RIMS
	Alex DP-20, 32 Hole, Double Wall
	CRANKSET
	TruVativ Five D, 42/32/22 with Power Spline



## NORTHSIDE TRAIL

MATTE STEEL GRAY

1	FRAME
2	7005 Aluminum, Oversize Edge Top and Oversize Edge Plus Down Tube AXC XXL Tri-Burner Seat and Chain Stays
3	FORK
4	Spinner Edge 3, 120mm of Travel and Preload Adjustment
	SHIFTERS
	Shimano Alivio
	BRAKES
	Hayes MX-2 HD Mechanical Disc, with New V6, 6" Rotors
	FRONT DERAILLEUR
	Shimano C050
	REAR DERAILLEUR
	Shimano Alivio
	HUBS
	Shimano Disc, 32 Hole
	RIMS
	Alex TD-20 Disc 32 Hole, Double Wall
	CRANKSET
	TruVativ X-Flow, 42/34/24, with Power Spline



## B-17

MATTE LIGHT BRONZE

1	FRAME
2	7005 Aluminum, Oversize Edge Top and Oversize Edge Plus Down Tube AXC XXL Tri-Burner Seat and Chain Stays, CNC Seat Stay Bridge
3	FORK
4	Answer Splice Comp, 130mm of Travel and Preload Adjustment
	SHIFTERS
	Shimano Alivio
	BRAKES
	Hayes MX-2 HD Mechanical Disc, with New V8, 8" Front, V6 6" Rear Rotors
	FRONT DERAILLEUR
	Shimano Alivio
	REAR DERAILLEUR
	Shimano Alivio
	HUBS
	Shimano Disc, 32 Hole
	RIMS
	Alex TD-20 Disc 32 Hole, Double Wall
	CRANKSET
	TruVativ Five D, 42/32/22 with Power Spline

## MOUNT TAMALPAIS | ELEV. 2,751 FT.





# + ALLOY HT

+ Lightning response, feather weight and ready to rip, the Indian Fire Trail is at the top of our Alloy HT series. Decked out with high-end components, the M6 Triple Butted Six Element Magnesium Enriched Alloy frame is agile, stiff and ready for your next race.



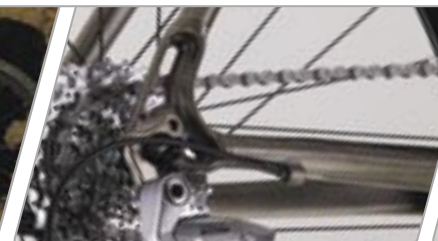
INDIAN FIRE TRAIL		
GLOSS MERCURY		
1	FRAME	FRONT DERAILLEUR
2	M6 Triple Butted Six Element Magnesium Enriched Alloy	Shimano LX
3	with Butted Edge Top and Down Tubes, Anti-Flex Tri-	
4	Burner Seat and Chain Stays, Disc Mounts	REAR DERAILLEUR
5		Shimano XT
6	FORK	HUBS
7	Fox Fox FRL, 80mm of Travel, with Rebound Adjustment, Lockout and Air Spring Preload	WTB Laser Disc Lite, 32 Hole
8	SHIFTERS	RIMS
	Shimano LX	Mavic XM 317 Disc, 32 Hole
	BRAKES	CRANKSET
	Avid Juicy 5 Hydraulic Disc	TruVativ Stylo XR, 44/32/22 with 2 Alloy Chainring, with Giga X Drive Exterior BB system





# + ALLOY HT

+ The Nail Trail, Palisades Trail, Hawk Hill SE and Hawk Hill all feature our new hydraulically formed EDGE tubing. The increased strength and torsional rigidity transfer more power with more performance.



TRI-BURNER FORGED DROPOUT

TRI-BURNER STAYS AND EDGE BRIDGE

HYDRAULICALLY FORMED GUSSET



## NAIL TRAIL

### MATTE BRONZE

1	FRAME
2	7000 Series Full Triple Butted Aluminum with Edge Top Tube and New Hydroform Edge Plus Down Tube, Full Double Butted Seat and Chainstays, Disc Mounts
3	FORK
4	Manitou Axel Super, 90-120mm of Travel and Rebound Adjustment with Rapid Travel Wind Down
5	SHIFTERS
6	Shimano Deore
7	BRAKES
8	Hayes HFX-9 Hydraulic Disc, with New V6, 6" Rotors
	FRONT DERAILLEUR
	Shimano Deore
	REAR DERAILLEUR
	Shimano LX
	HUBS
	Shimano Disc, 32 Hole
	RIMS
	Mavic XM 117 Disc, 32 Hole
	CRANKSET
	TruVativ Firex, 44/32/22 with 1 Alloy Chainring and Power Spline

## HAWK HILL SE

### BRUSHED DENIM SILVER

1	FRAME
2	7000 Series Triple Butted Aluminum with Edge Top Tube and New Hydroform Edge Plus Down Tube, Disc Mounts
3	FORK
4	Marzocchi MZ Comp, 100mm of Travel and Preload Adjustment
5	SHIFTERS
6	Shimano Alivio
7	BRAKES
8	Hayes MX-2 XC Mechanical Disc, with New V6, 6" Rotors
	FRONT DERAILLEUR
	Shimano Alivio
	REAR DERAILLEUR
	Shimano Deore
	HUBS
	Shimano Disc, 32 Hole
	RIMS
	WTB Dual Duty XC, 32 Hole, Double Wall
	CRANKSET
	TruVativ Five D, 42/32/22 with Power Spline



## PALISADES TRAIL

### MATTE GUNMETAL

1	FRAME
2	7000 Series Full Triple Butted Aluminum with Edge Top Tube and New Hydroform Edge Plus Down Tube, Full Double Butted Seat and Chainstays, Disc Mounts
3	FORK
4	Manitou Axel Comp, 100mm of Travel and Preload Adjustment
5	SHIFTERS
6	Shimano Deore
7	BRAKES
8	Hayes Sole Hydraulic Disc, with New V6, 6" Rotors
	FRONT DERAILLEUR
	Shimano Deore
	REAR DERAILLEUR
	Shimano Deore
	HUBS
	Shimano Disc, 32 Hole
	RIMS
	WTB Dual Duty XC, 32 Hole, Double Wall
	CRANKSET
	TruVativ Five D, 44/32/22 with 1 Alloy Chainring and Power Spline

## HAWK HILL

### MATTE COSMIC BLUE

1	FRAME
2	7000 Series Triple Butted Aluminum with Edge Top Tube and New Hydroform Edge Plus Down Tube, Disc Mounts
3	FORK
4	Marzocchi MZ Comp, 100mm of Travel and Preload Adjustment
5	SHIFTERS
6	Shimano Alivio
7	BRAKES
8	Forged Alloy Linear Pull
	FRONT DERAILLEUR
	Shimano Alivio
	REAR DERAILLEUR
	Shimano Deore
	HUBS
	Shimano Disc, 32 Hole
	RIMS
	Alex TD-20 Disc 32 Hole, Double Wall
	CRANKSET
	TruVativ IsoFlow, 42/32/22





+ **ALLOY HT**

+ The Pioneer Trail, Bolinas Ridge and Bobcat Trail bikes are dialed and ready to ride. For 2005 we have added all new dropouts and reinforced headtube gussets for increased durability. The Bolinas Ridge and Pioneer Trail models are also available with Women specific frames.



BOBCAT TRAIL	
MATTE BLACK	
1	FRAME
2	7000 Series Butted Aluminum with Edge Top and Down, Disc Mounts
3	
4	FORK
5	Spinner Grind AC 323, 80mm of Travel and Preload Adjustment
6	
7	SHIFTERS
8	Shimano Acera
	BRAKES
	Hayes MX-2 XC Mechanical Disc, with New V6, 6" Rotors
	FRONT DERAILLEUR
	Shimano T300
	REAR DERAILLEUR
	Shimano Acera
	HUBS
	Shimano Disc, 32 Hole
	RIMS
	Alex TD-20 Disc 32 Hole, Double Wall
	CRANKSET
	TruVativ X-Flow, 42/34/24

PIONEER TRAIL	
MATTE STEALTH BLUE	
1	FRAME
2	7000 Series Butted Aluminum with Edge Top and Down Tubes
3	
4	FORK
5	Spinner Grind 1, 70mm of Travel and Preload Adjustment
6	
7	SHIFTERS
	Shimano Altus
	BRAKES
	Forged Alloy Linear Pull
	FRONT DERAILLEUR
	Shimano C050
	REAR DERAILLEUR
	Shimano Altus
	HUBS
	Alloy Double Sealed, 36 Hole with QR
	RIMS
	Alloy, 36 Hole
	CRANKSET
	TruVativ X-Flow, 42/34/24



BOLINAS RIDGE	
BRUSHED POLISH MATTE SILVER	
1	FRAME
2	7000 Series Butted Aluminum with Edge Top and Down Tubes
3	
4	FORK
5	Spinner Grind 1, 70mm of Travel and Preload Adjustment
6	
7	SHIFTERS
8	Shimano Altus
	BRAKES
	Marin Comfort Dual Density
	FRONT DERAILLEUR
	Shimano C050
	REAR DERAILLEUR
	Shimano Acera
	HUBS
	Alloy Double Sealed, 36 Hole with QR
	RIMS
	Alloy, 36 Hole
	CRANKSET
	TruVativ X-Flow, 42/34/24





# + STEEL HT

+ Traditional style, modern technology. The Steel HT series stays true to its roots with unrelenting durability and a classic ride quality. The Pine Mountain and Eldridge Grade once again take the formula a step higher with Columbus Tubing as the steel of choice.



## PINE MOUNTAIN

### GLOSS MERCURY

1	FRAME	BRAKES	HUBS
2	Columbus Thron Mega Top and Down Tubes, Anti-Flex	Avid Juicy 7 Hydraulic Disc	WTB Laser Disc Super Lite, 32 Hole
3	Tri-Burner Seat and Chain Stays with Disc Brake Mounts		
	FORK	FRONT DERAILLEUR	RIMS
	Manitou Skareb Elite, 80mm of Travel with Alloy Steerer, Air Preload, Rebound Adjustment and Lockout	Shimano LX	WTB Laser Disc Lite, 32 Hole Wheelset
	SHIFTERS	REAR DERAILLEUR	CRANKSET
	Shimano LX	Shimano XT	TruVativ Stylo XR, 44/32/22 with 2 Alloy Chainring, with Giga X Drive Exterior BB system

## ELDRIDGE GRADE

### GLOSS PEARL WHITE

1	FRAME
2	Columbus Thron Mega Top and Down Tubes, Anti-Flex
3	Tri-Burner Seat and Chain Stays with Disc Brake Mounts
	FORK
	Manitou Skareb Comp, 80mm of Travel, with Air Preload, and Rebound Adjustment
	SHIFTERS
	Shimano Deore
	BRAKES
	Hayes Sole Hydraulic Disc, with New V6, 6" Rotors
	FRONT DERAILLEUR
	Shimano Deore
	REAR DERAILLEUR
	Shimano LX
	HUBS
	Shimano Disc, 32 Hole
	RIMS
	Mavic XM 117 Disc, 32 Hole
	CRANKSET
	TruVativ Firex, 44/32/22 with 2 Alloy Chainrings



## BEAR VALLEY

### GLOSS MIDNIGHT BLUE

1	FRAME
2	Double Butted Cromoly Front Triangle with Edge Shaped
3	Tubing, Double Butted Anti-Flex Tri-Burner Seat and Chain Stays w/ Disc Brake Mounts
	FORK
	Marzocchi MZ Comp, 80mm of Travel and Preload Adjustment
	SHIFTERS
	Shimano Deore
	BRAKES
	Forged Alloy with Linear Spring
	FRONT DERAILLEUR
	Shimano Deore
	REAR DERAILLEUR
	Shimano Deore
	HUBS
	Shimano Disc, 32 Hole
	RIMS
	Alex TA-19 32 Hole, Double Wall, CNC Side Walls
	CRANKSET
	TruVativ Five D, 44/32/22



COLUMBUSTHRON



N 37 54.239 | W 122 36.367



+ ALP

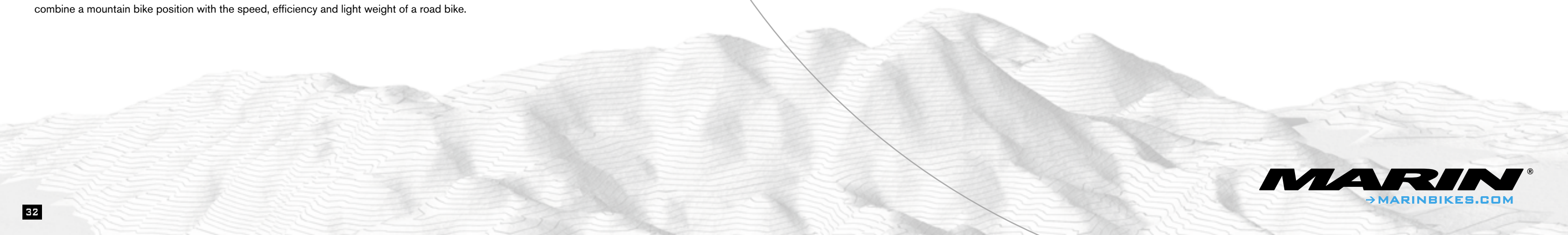
**AERODYNAMIC. LIGHTWEIGHT. PERFORMANCE.**

At the crossroads between the mountain and the road you will find the ALP series. Featuring a flat handlebar, these bikes combine a mountain bike position with the speed, efficiency and light weight of a road bike.



+ ROAD

**RACING REVOLUTIONS.** Whether you ride in a peloton or on backcountry roads, our Road bikes offer something for you. High tech features and race inspired geometry add amazing performance to this series of road bikes.





+ Super light with endurance level comfort, the Highway One has what it takes to cover all 644 miles of the famous California coastal highway. The comfortable riding position is set-up by the flat carbon bar, while power is directly transferred through the all carbon crankset, fork and seat stays.



CARBON SEATSTAYS & 7005 EDGE TUBING SLIMSTACK HEADSET & CARBON FORK FSA CARBON CRANK & TRI-BURNER CHAINSTAYS



N 37 54.239 | W 122 36.367



## HIGHWAY ONE

GLOSS MERCURY

1	FRAME	FRONT DERAILLEUR
2	7005 Aluminum Full Triple Butted Edge Shaped	Shimano Tiagra
3	Tubing with Carbon Seatstays and Double Butted	REAR DERAILLEUR
4	Tri-Burner Chainstays (* Please note that the 13.5" size has Aluminum Seat Stays)	Shimano 105
	FORK	HUBS
	Rigid Carbon Fork	Shimano WH-R550 Wheelset
	SHIFTERS	RIMS
	Shimano SL-R440	Shimano WH-R550 Wheelset
	BRAKES	CRANKSET
	Avid Single Digit 7 with Shimano Power Modulator	FSA Carbon Pro Team Triple, 53/39/30





+ A fast road bike does not require riding in the traditional road position. Streamlined and further refined for 2005, the ALP series is the result of combining the benefits of a light-weight road bike with a comfortable riding position. Each model features a totally custom, hand-built frameset, completed with a performance driven component package.



MILL VALLEY

GLOSS PEARL WHITE

1	FRAME
2	7005 Aluminum Full Triple Butted Edge Shaped Tubing with Carbon Seatstays and Double Butted Tri-Burner Chainstays (* Please note that the 13.5" size has Aluminum Seat Stays)
3	FORK
4	Rigid Carbon Fork
	SHIFTERS
	Shimano SL-R440
	BRAKES
	Avid Single Digit 5 with Power Modulator
	FRONT DERAILLEUR
	Shimano Tiagra
	REAR DERAILLEUR
	Shimano Tiagra
	HUBS
	Shimano WH-R500 Wheelset
	RIMS
	Shimano WH-R500 Wheelset
	CRANKSET
	FSA Gossamer Triple, 53/42/30



FAIRFAX

BRUSHED POLISH MATTE SILVER

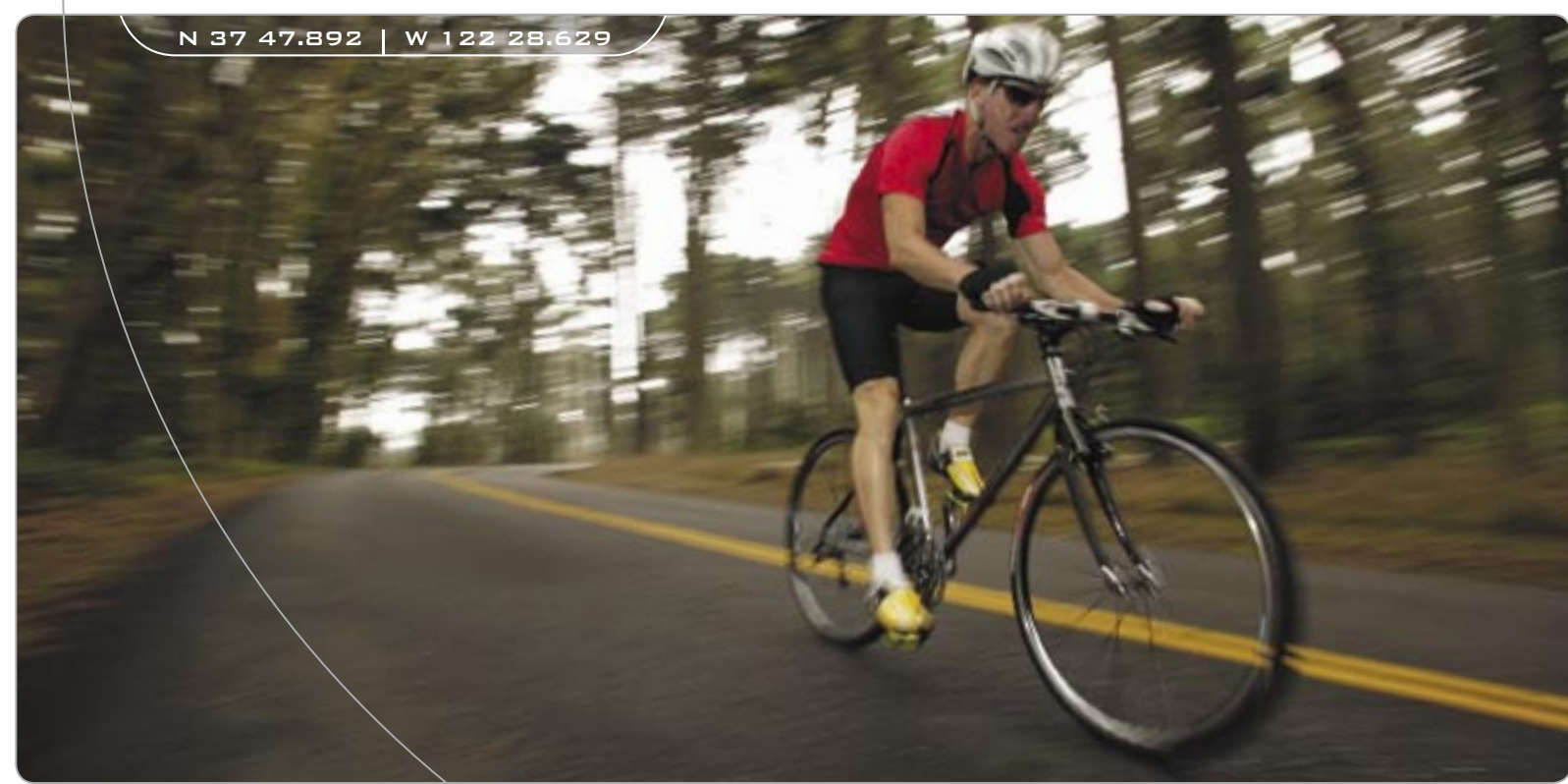
1	FRAME
2	7000 Series Full Triple Butted Aluminum with Edge Top Tube and Down Tube, Tri-Burner Double Butted Seat and Chainstays
3	FORK
4	Rigid Carbon Fork
	SHIFTERS
	Shimano ST-R224, EZ-Fire Plus, 24 Speed
	BRAKES
	Linear Pull with Front Power Modulator
	FRONT DERAILLEUR
	Shimano Sora
	REAR DERAILLEUR
	Shimano Sora
	HUBS
	Formula, 32 Hole
	RIMS
	Alex DC-19, CNC Double Wall, 28 Hole Front, 32 Hole Rear
	CRANKSET
	FSA CFM Triple, 53/42/30



LUCAS VALLEY

BRUSHED STEEL GRAY

1	FRAME
2	7005 Aluminum Full Triple Butted Edge Shaped Tubing with Carbon Seatstays and Double Butted Tri-Burner Chainstays (* Please note that the 13.5" size has Aluminum Seat Stays)
3	FORK
4	Rigid Carbon Fork
	SHIFTERS
	Shimano SL-R440-8
	BRAKES
	Linear Pull with Front Power Modulator
	FRONT DERAILLEUR
	Shimano R443
	REAR DERAILLEUR
	Shimano Sora
	HUBS
	Formula, 32 Hole
	RIMS
	Alex DC-19, CNC Double Wall, 28 Hole Front, 32 Hole Rear
	CRANKSET
	FSA CFM Triple, 53/42/30





# + ROAD

+ The Stelvio has always been at the apex of cycling technology. Absolute transfer of power is achieved through the precision CXR Venus C7 composite carbon frame, while road vibrations are all but eliminated by its custom Obllix C7 tubing shape. Flawlessly supported by top quality components, the Stelvio will set the pace. Now pick it up. It's your pull.

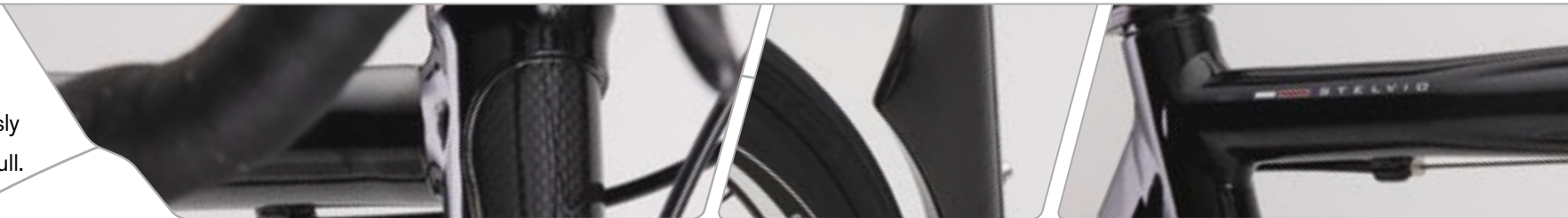


N 37 53.655 | W 122 37.370

## STELVIO

CARBON GLOSS BLACK

1	FRAME	REAR DERAILLEUR
2	CXR Venus 7 Carbon with Alloy Junctions	Campagnolo Record, 10 Speed, Short Cage
3		
4	FORK	HUBS
5	Trigon Carbon Monocoque	FSA RD-600 Wheelset, 18 Hole Front, 24 Hole Rear,
	SHIFTERS	RIMS
	Campagnolo Chorus Carbon Ergopower 10 Speed	FSA RD-600 Wheelset, 18 Hole Front, 24 Hole Rear
	BRAKES	CRANKSET
	Campagnolo Chorus	FSA K-Force Mega Exo Carbon Road, 53/39 with Mega Exo BB System
	FRONT DERAILLEUR	
	Campagnolo Chorus	



ALUMINUM REINFORCED CARBON HEADTUBE    CARBON AERO SEAT TUBE    SEAMLESS CARBON TO ALLOY JUNCTION



**MARIN**  
→MARINBIKES.COM



# + ROAD

+ When design, technology and style are properly mixed the result is the new 2005 Road series. Sculpted, aerodynamic aluminum seat tubes and carbon seat and chain stays offer every rider maximum performance and efficiency.



## SAN MARINO

### GLOSS PEARL

1	FRAME
2	M6 Triple Butted Six Element Magnesium Enriched Alloy with Carbon Fiber Seat and Chain Stays
3	FORK
4	Road Carbon
5	SHIFTERS
	Campagnolo Centaur 10 Speed
	BRAKES
	Campagnolo Centaur
	FRONT DERAILLEUR
	Campagnolo Centaur
	REAR DERAILLEUR
	Campagnolo Centaur 10 Speed
	HUBS
	FSA RD-400 Wheelset, 20 Hole Front, 24 Hole Rear
	RIMS
	FSA RD-400 Wheelset, 20 Hole Front, 24 Hole Rear
	CRANKSET
	FSA SLK Compact Carbon Road, 50/36 with Mega Exo BB System

## ARGENTA

### GLOSS MERCURY

1	FRAME
2	Double Butted 7005 Aluminum with Carbon Seat Stays
3	FORK
4	Road Carbon
5	SHIFTERS
	Shimano Tiagra STI
	BRAKES
	Shimano Tiagra Dual Pivot
	FRONT DERAILLEUR
	Shimano Tiagra
	REAR DERAILLEUR
	Shimano Tiagra
	HUBS
	Shimano WH-R500 Wheelset
	RIMS
	Shimano WH-R500 Wheelset
	CRANKSET
	FSA Gossamer Triple, 53/42/30



## VERONA

### GLOSS MIDNIGHT BLUE

1	FRAME
2	Double Butted 7005 Aluminum with Carbon Seat Stays
3	FORK
4	Road Carbon
5	SHIFTERS
	Shimano 105 STI
	BRAKES
	Shimano 105 Dual Pivot
	FRONT DERAILLEUR
	Shimano 105
	REAR DERAILLEUR
	Shimano 105
	HUBS
	Shimano WH-R550 Wheelset
	RIMS
	Shimano WH-R550 Wheelset
	CRANKSET
	FSA Carbon Pro Team Triple, 53/39/30

## VENEZIA

### ELECTRIC BLUE

1	FRAME
2	Double Butted 7005 Aluminum with Carbon Seat Stays
3	FORK
4	Road Carbon
5	SHIFTERS
	Shimano Sora STI
	BRAKE
	Dual Pivot
	FRONT DERAILLEUR
	Shimano 2203
	REAR DERAILLEUR
	Shimano Sora
	HUBS
	Formula, 32 Hole Rear, 28 Hole Front
	RIMS
	Alex R450, 32 Hole Rear, 28 Hole Front, Double Wall, CNC Side Walls
	CRANKSET
	FSA CFM, 53/42/30





N 37 46.601 | W 122 23.819



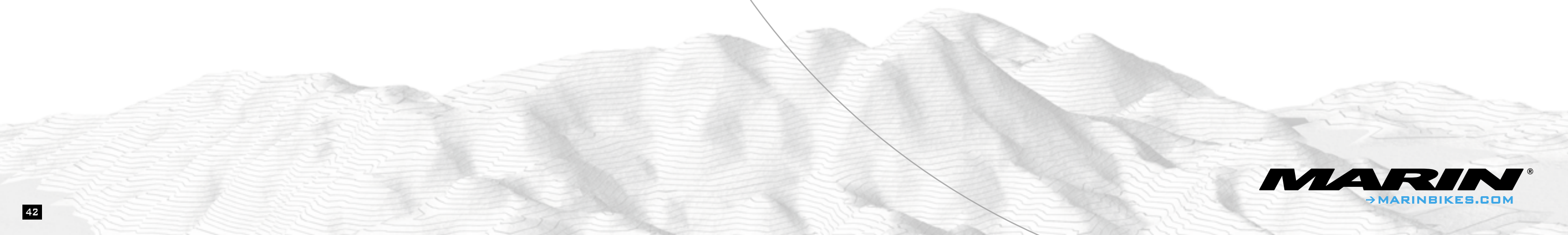
+ URBAN

**CONCRETE CONTROL.** Where city and mountain meet you'll find the Urban series. Rugged, lightweight and durable these are the mountain bikes of the urban streets.



+ CITY

**MORE FUEL EFFICIENT THAN A HYBRID.**  
Reliable, comfortable and pure fun, our city bikes are the main mode of transportation for metropolitan cyclists around the world. Conserve energy, ride your bike.





# + URBAN

+ The Urban series is designed for the demanding city cyclist. Featuring a lightweight mountain bike frameset with slick street tires, these bikes are fast and responsive, with powerful brakes to keep you in control on the city streets.



## POINT REYES

### MATTE SMOKE

1	FRAME	BRAKES	HUBS
2	7005 Aluminum Full Triple Butted Edge Shaped Tubing with Tri-Burner Full Double Butted Seat and Chainstays with Disc Mounts	Hayes HFX-9 XC Hydraulic Disc, with New V6, 6" Rotors	Shimano Disc, 32 Hole with Locking QR
3			
	FORK	FRONT DERAILLEUR	RIMS
	RFE Carbon	Shimano Nexave T-401	Mavic XM 317 Disc, 32 Hole
	SHIFTERS	REAR DERAILLEUR	CRANKSET
	Shimano LX	Shimano LX	TruVativ Firex XR, Trekking, 48/38/28 with 1 Alloy

## NOVATO

### MATTE GUNMETAL

1	FRAME
2	7005 Aluminum Full Triple Butted Edge Shaped Tubing with Tri-Burner Seat and Chainstays with Disc Mounts
3	
	FORK
	7000 Series Aluminum Rigid 1 1/8" Disc
	SHIFTERS
	Shimano Deore
	BRAKES
	Forged Alloy Linear Pull
	FRONT DERAILLEUR
	Shimano Nexave T-401
	REAR DERAILLEUR
	Shimano Deore
	HUBS
	Shimano Disc, 32 Hole with Locking QR
	RIMS
	WTB Dual Duty XC with CNC, 32 Hole, Double Wall
	CRANKSET
	TruVativ Five D, 48/38/28 with 1 Alloy Chainring



## MUIRWOODS

### MATTE BLACK

1	FRAME
2	Double Butted Cromoly Front Triangle with Edge Shaped Tubing with Double Butted Anti-Flex Tri-Burner Seat and Chainstays
3	
	FORK
	Cromoly Rigid Fork
	SHIFTERS
	Shimano Alivio
	BRAKES
	Forged Alloy Linear Pull
	FRONT DERAILLEUR
	Shimano Nexave T301
	REAR DERAILLEUR
	Shimano Deore
	HUBS
	Alloy Double Sealed, 32 Hole with QR
	RIMS
	WTB Dual Duty XC with CNC, 32 Hole, Double Wall
	CRANKSET
	TruVativ IsoFlow, Comfort, 48/38/28





+ Commuting or touring, fitness or fun; the Sausalito is the perfect mode of transportation. Outfitted with lightweight parts, a suspension seat post and fork, low resistance tires, and quality Shimano components, no matter where you are riding you will arrive in comfort and style.



ADJUSTABLE STEM    SUNTOUR NRX-7500 WITH PRELOAD & LOCKOUT



## SAUSALITO

MATTE GRAVEL

1	FRAME	FRONT DERAILLEUR
2	7000 Series Triple Butted Aluminum with Edge Top Tube and New Edge Down Tube, Tri-Burner Seat and Chainstays	Shimano Deore
3		REAR DERAILLEUR
4	FORK	Shimano LX
5	SR Suntour NRX 7500, 63mm of Travel, with Preload Adjustment and Lockout	HUBS
	SHIFTERS	Shimano Deore, 36 Hole
	Shimano Deore	RIMS
	BRAKES	WTB Tour Duty, 36 Hole, Double Wall
	Shimano Deore with Power Modulator	CRANKSET
		Shimano Deore, Hollowtech, 48/36/26 with Octalink





+ Efficient, reliable and always stylish, the City series is ideal for the daily commuter or the recreational fitness oriented cyclist. Suspension forks and seatposts make your bike commute more comfortable and enjoyable than sitting in a car stuck in traffic.



W\*

SAN ANSELMO

BRUSHED CHAMPAGNE TINT

1	FRAME
2	7000 Series Triple Butted Aluminum with Edge Top Tube and New Edge Down Tube, Tri-Burner Seat and Chainstays
3	FORK
4	SR Suntour NRX 7500, 63mm of Travel, with Preload Adjustment and Lockout
5	SHIFTERS
	Shimano Alivio
	BRAKES
	Linear Pull with Front Power Modulator
	FRONT DERAILLEUR
	Shimano Nexave T-401
	REAR DERAILLEUR
	Shimano Deore
	HUBS
	Shimano RM40, 36 Hole with QR Rear, Alloy Double Sealed, 36 Cap Hole with QR Front
	RIMS
	WTB Dual Duty, 36 Hole, Double Wall
	CRANKSET
	Suntour CR-420, 48/38/28, with Alloy Outer Chainring



W\*

LARKSPUR

BRUSHED POLISH MATTE SILVER

1	FRAME
2	7000 Series Double Butted Aluminum with Edge Top Tube and New Edge Down Tube, Tri-Burner Seat and Chainstays
3	FORK
4	Cromoly Rigid fork
5	SHIFTERS
	Shimano Altus
	BRAKES
	Forged Alloy Linear Pull with Power Modulator
	FRONT DERAILLEUR
	Shimano C-100
	REAR DERAILLEUR
	Shimano Acera
	HUBS
	Alloy Double Sealed, 36 Hole with QR
	RIMS
	Alex TA-19, 700c, 36 Hole, Double Wall, CNC Side Walls
	CRANKSET
	Suntour CR-410, 48/38/28



W\*

SAN RAFAEL

MATTE COSMIC BLUE

1	FRAME
2	7000 Series Double Butted Aluminum with Edge Top Tube and New Edge Down Tube, Tri-Burner Seat and Chainstays
3	FORK
4	Spinner Odesa LX, 63mm of Travel, with Preload Adjustment and Lockout
5	SHIFTERS
	Shimano Acera
	BRAKES
	Forged Alloy Linear Pull with Power Modulator
	FRONT DERAILLEUR
	Shimano C-100
	REAR DERAILLEUR
	Shimano Alivio
	HUBS
	Alloy Double Sealed, 36 Hole with QR
	RIMS
	Alex TA-19, 36 Hole, Double Wall, CNC Side Walls
	CRANKSET
	Suntour CR-410, 48/38/28



W\*

KENTFIELD

MATTE GUNMETAL

1	FRAME
2	7000 Series Aluminum with Edge Top Tube and New Edge Down Tube Tri-Burner Seat and Chainstays
3	FORK
4	Cromoly Rigid fork
5	SHIFTERS
	Shimano Altus
	BRAKES
	Forged Alloy Linear Pull with Power Modulator
	FRONT DERAILLEUR
	Shimano TY-30
	REAR DERAILLEUR
	Shimano Acera
	HUBS
	Alloy Double Sealed, 36 Hole with QR
	RIMS
	Alloy, 36 Hole
	CRANKSET
	SR Suntour XCC-100, 48/38/28







+ COMFORT

**CASUAL TRAVEL.** Our Comfort bikes are the perfect fit for an all day outing or a short ride to the market. They have a plush feel and upright positioning, so sit back and enjoy the ride.



+ CRUISERS

**COOL CLASSICS.** Lightweight with a relaxed riding feel, these bikes are all about style. Low maintenance design and comfortable features insure you'll enjoy cruising wherever you go.



+ KIDS

**LITTLE BIKES, BIG TECH.** These aren't your average kids bikes. Crafted with the same quality components and suspension forks as our adult bikes, the Kids series is specifically engineered for the young cyclist.



# + COMFORT

+ Comfort, pure and simple, is what many cyclists are looking for in a bike. The Comfort series sets the standard and then goes further. Featuring an adjustable stem for easy handlebar height adjustment as well as suspension forks and seatposts, the Redwood and Stinson are comfortable and handle like a stylish luxury sedan.



## REDWOOD



BRUSHED CHAMPAGNE TINT

1	FRAME	7000 Series Butted Aluminum with Edge Top and Down Tubes	BRAKES	Forged Alloy with Linear Spring	HUBS	Alloy Double Sealed 32 Hole with QR
2	FORK	Spinner EnRoute AC, 63mm of Travel, with Lockout and Preload Adjustment	FRONT DERAILLEUR	Shimano Nexave T300	RIMS	Alex TA-19 32 Hole, Double Wall, CNC Side Walls
	SHIFTERS	Shimano Alivio	REAR DERAILLEUR	Shimano Alivio	CRANKSET	Suntour CR-420, 48/38/28, with Alloy Outer Chainring

## STINSON



BRUSHED POLISH MATTE SILVER

1	FRAME	7000 Series Butted Aluminum with Edge Top and Down Tubes	BRAKES	Forged Alloy Linear Pull	HUBS	Alloy Double Sealed, 36 Hole with QR
2	FORK	Spinner EnRoute AC, 63mm of Travel and Preload Adjustment	FRONT DERAILLEUR	Shimano TY-30	RIMS	Alloy, 36 Hole
	SHIFTERS	Shimano Altus	REAR DERAILLEUR	Shimano Altus	CRANKSET	Suntour XCC-100, 48/38/28





# + CRUISERS

+ The Cruiser bikes are laid back, smooth examples of the relaxed lifestyle. With frame designs for both men and women, they are lightweight and cool looking. Low maintenance and easy to handle by even novice riders, each bike is built for comfort, efficiency and of course, just cruisin'.



## DRAKES BEACH



BRUSHED CHAMPAGNE TINT

1	FRAME	BRAKES	RIMS
2	7005 Aluminum Men's and Women's Frame	Coaster Brake	Alloy, 36 Hole
	FORK	HUBS	CRANKSET
	Cromoly Rigid	Coaster Brake Rear, Alloy Sealed Front	Alloy 170mm, 44 Tooth

## HEARTS DESIRE BEACH



BRUSHED CHAMPAGNE TINT

1	FRAME	BRAKES	RIMS
2	7005 Aluminum Men's and Women's Frame	Coaster Brake	Alloy, 36 Hole
	FORK	HUBS	CRANKSET CRANKSET
	Cromoly Rigid	Coaster Brake Rear, Alloy Sealed Front	Alloy 170mm, 44 Tooth



+ Our Kids series consists of two styles of bikes. Mountain bikes for younger cyclists and 16" wheel bikes for first time riders. All four utilize the custom EDGE aluminum tubing found in our high end adult bikes. The result is a collection of unusually lightweight kids bikes which makes riding much easier and more enjoyable for you and them.



BOB BUCKLEY, THE FOUNDER OF MARIN BIKES, AND HIS GRANDKIDS, MALIA AGE 9 AND ANDREW AGE 7.



BAYVIEW TRAIL 24"

MATTE GUNMETAL

1	FRAME
2	7005 Series Double Butted Aluminum with Edge top and down tubes.
3	FORK
4	InSync Grind 1, 50mm of Travel, 24"
	SHIFTERS
	Shimano Altus
	BRAKES
	Forged Alloy Linear Pull
	FRONT DERAILLEUR
	Shimano CS50
	REAR DERAILLEUR
	Shimano CT95
	HUBS
	Alloy Double Sealed, 36 Hole with QR
	RIMS
	Alex Alloy, 36 Hole
	CRANKSET
	TruVativ X-Flow 42/34/24, 160mm



MBX-50 16"

BRUSHED POLISH MATTE SILVER

1	FRAME
2	7005 Series Double Butted Aluminum with Edge top and down tubes.
3	FORK
4	Suspension, 40mm of Travel, 16"
	SHIFTERS
	NA
	BRAKES
	Coaster Brake Rear and Hand Brake Rear
	FRONT DERAILLEUR
	NA
	REAR DERAILLEUR
	NA
	HUBS
	Alloy, 28 Hole
	RIMS
	Alloy 28 Hole
	CRANKSET
	Steel BMX 4 1/2", 36 Tooth



HIDDEN CANYON 20"

BRUSHED POLISH MATTE SILVER

1	FRAME
2	7005 Series Double Butted Aluminum with Edge top and down tubes.
3	FORK
4	InSync Grind 1, 50mm of Travel, 20"
	SHIFTERS
	SRAM MRX
	BRAKES
	Forged Alloy Linear Pull
	FRONT DERAILLEUR
	Shimano TY-22
	REAR DERAILLEUR
	Shimano TY-22
	HUBS
	Alloy, 32 Hole
	RIMS
	Alloy 32 Hole
	CRANKSET
	Alloy 140mm, 42/32, w/Chain Guard



TINY TRAIL 16"

GLOSS WHITE

1	FRAME
2	7005 Series Double Butted Aluminum with Edge top and down tubes.
3	FORK
4	Suspension, 40mm of Travel, 16"
	SHIFTERS
	NA
	BRAKES
	Coaster Brake Rear and Hand Brake Rear
	FRONT DERAILLEUR
	NA
	REAR DERAILLEUR
	NA
	HUBS
	Alloy, 28 Hole
	RIMS
	Alloy 28 Hole
	CRANKSET
	Steel BMX 4 1/2", 36 Tooth





# + TECH: *FRAME DESIGN*

## + ALUMINUM

T6  
MONOCOQUE  
FRAME CONSTRUCTION

Our Quad-Link XC and TARA FRS frames share the need for unrelenting torsional rigidity, strength and light weight. Our award winning and patented 6061 T6 Monocoque frames are the solution.

**6061** Aircraft Grade Aluminum is pressed to shape each monocoque half section, which are then robotically precision-welded along the top and bottom seams to form the final monocoque frame. CNC machining and T6 heat treatments complete the complex process. Din Plus certified, these frames are built to last.



■ XC FRS ■ TARA FRS



We've developed our custom Aluminum EDGE tubing shape to give each of our AXC, Alloy HT, ALP, Road, Urban, City, Comfort and Kids frames a smoother ride.

**7005** Aluminum is used to create the EDGE Tubing's unique oversize profile. Designed to be light and rigid for efficiency and performance, EDGE Tubing has increased strength in high stress sections and light weight suppleness in others.

**M6** EDGE Tubing takes our aluminum frame technology to the next level by incorporating aluminum with magnesium. A mineral desirable for its fortitude and low atomic weight, M6 weighs less than standard aluminum. The result is a race ready frame that offers tremendous strength and durability.



■ AXC ■ ALLOY HT ■ ALP ■ ROAD ■ URBAN ■ CITY ■ COMFORT ■ KIDS

## + STEEL



COLUMBUS THRON

We have a reputation for creating some of the best performing steel hardtail frames available today. Extreme durability and exceptional ride characteristics can be found in each of our hand-built Steel HT frames.

**ColumbusThron** is our material of choice for the Steel HT series. Double butted with a custom drawn shape, the Columbus tubing sections are optimized for light weight performance. Steel's natural durability and suppleness are optimized through the various tubing sizes and overall geometry to create frames that will always be reliable and purely enjoyable to ride.



■ STEEL HT

## + CARBON



CXR

CARBON CROSSWEAVE  
COMPOSITE CONSTRUCTION

Carbon is an ideal material for building a frame that has all the right qualities in all the right places. A frame's vertical compliance and directional stiffness can be highly controlled through the creation of custom tubing shapes that utilize specific orientations of the actual carbon fibers.

**Venus C7** Carbon is used to create our CXR Stelvio road frame. Featuring a custom composite construction, the CXR frame utilizes strategically laid carbon fiber sheets to seamlessly integrate its Obllix carbon tubing with the headtube and seatube reinforcing aluminum junctions.



■ ROAD

### EDGE 2X/3X BUTTING

Butting is the art of tailoring a frame's tubing wall thickness. High stress areas near welds are reinforced by creating a thicker tubing wall. Areas of lower stress are designed with a reduced wall thickness in order to minimize weight and improve vertical compliance. Our Aluminum EDGE frames feature double and triple butted tubing sections.



### TRI-BURNER STAYS

Designed to be light, torsionally rigid and offer shock absorption properties, our custom seat and chain stay designs play a critical role in providing the responsive yet plush feel that comes from riding a Marin frame.

Our top end models feature Tri-Burner seat and chain stays. These tapered, triangulated stay shapes increase rigidity as well as improve overall tire clearance for muddy conditions.



### CUSTOM DROPOUTS

In order to accommodate advance brake technologies, optimize functionality and maintain high durability levels, we have designed a series of CNC and forged dropouts.

The resulting stiffness of the rear end translates into a more reactive ride which will track and handle better in even the most unforgiving of terrains.





+

TECH:

GEOMETRY / COMPONENTS

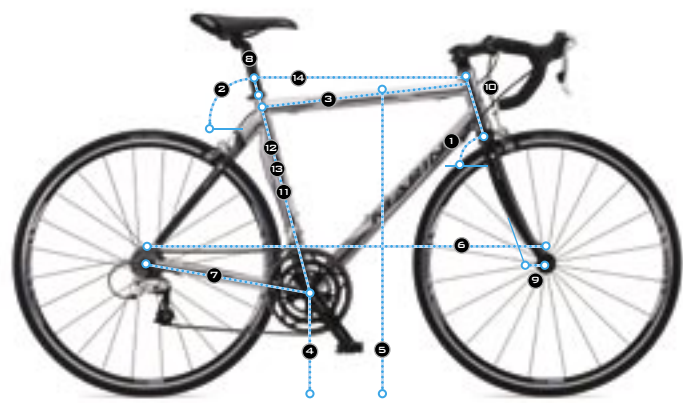
+

GEOMETRY DIAGRAMS

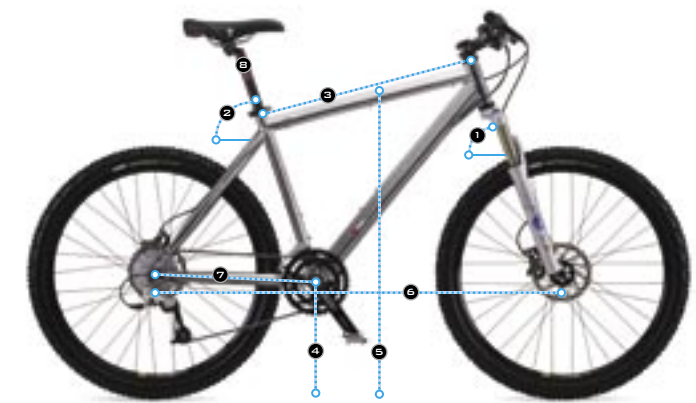
Have you been wondering what all those measurements in the back of this catalog mean? The answers are here, no #2 pencil required.



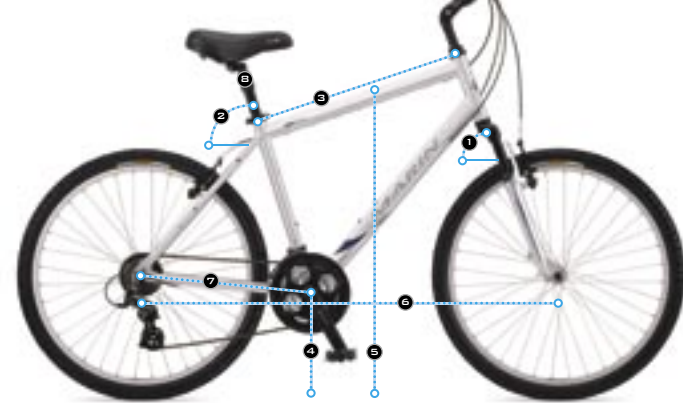
MOUNTAIN FRS



ROAD



MOUNTAIN HT



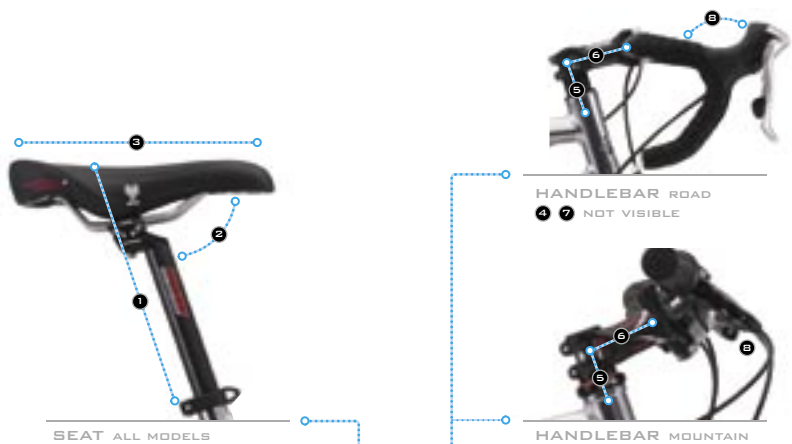
PATH

MEASUREMENT	DESCRIPTION	PERFORMANCE EFFECT & NOTES
HEAD ANGLE	1 The Head Tube angle in relation to the ground	Affects the way a bike turns; steeper = more precise, lower = smoother
SEAT ANGLE	2 The Seat Tube angle in relation to the ground	Calculated to optimize the riders weight distribution and power transfer
TOP TUBE	3 Measurement from the center of the Head Tube / Top Tube junction to the center of the Seat Tube / Top Tube junction	The primary measurement related to determining the correct frame size for your height
BB HEIGHT	4 From the center of the Bottom Bracket to the ground	The frames approximate amount of ground clearance
STANDOVER	5 The vertical height of the Top Tube's mid point	Affects the bike's amount of maneuverability and riders standover clearance
WHEEL BASE	6 The space between the Front and Rear Axles	Calculated for superior weight distribution
CHAIN STAY	7 The space between the center of the Rear Axle and the center of the Bottom Bracket	Related to the wheel base length and rear wheel size
SEAT POST	8 Outer diameter of Seat Post	Related to Seat Tube interior diameter
FORK OFFSET	9 ROAD ONLY: It is the measurement of the difference between an imaginary line running through the Fork Steerer Tube towards the ground, and the Front Axle	Utilized to increase the Wheel Base length for specific frame geometries
HEAD TUBE	10 ROAD ONLY: The space between the Lower and Upper Headset	Affects the height of the bike's stem and handlebar in relation to the saddle
SEAT TUBE: ACTUAL CENTER TO CENTER	11 ROAD ONLY: The distance from the center of the Bottom Bracket to the center of the Seat Tube / Top Tube junction	Additional road specific measurement used for sizing comparisons
SEAT TUBE: THEORETICAL LEVEL TOP TUBE CENTER TO CENTER	12 ROAD ONLY: The distance from the center of the Bottom Bracket to the theoretical center dimension of the Seat Tube / Top Tube junction, if this frame had a level Top Tube	Additional road specific measurement used for sizing comparisons
SEAT TUBE: ACTUAL CENTER TO TOP	13 ROAD ONLY: The distance from the center of the Bottom Bracket to the top of the Seat Tube rim	Additional road specific measurement used for sizing comparisons
TOP TUBE: THEORETICAL LEVEL TOP TUBE	14 ROAD ONLY: If this frame had a level Top Tube, this is the distance from the center of Head Tube/ Top Tube junction to the theoretical center dimension of the Seat Tube/ Top Tube junction	Affects the rider's upper body positioning

+

FIT TUNING

The overall fit and feel of your bike can be dialed-in with the following adjustments:



SEAT ALL MODELS

HANDLEBAR MOUNTAIN



COMPONENT	ADJUSTMENT TIPS
SADDLE HEIGHT	1 Put the heels of your cycling shoes on the pedals. Adjust the height of your seat so that your legs are straight at the lowest point of the pedaling stroke, your hips should remain level while pedaling
SADDLE TILT	2 Too much pressure on your hands, tilt the seat up. Tilt the seat down to reduce crotch pressure
SADDLE SETBACK	3 For low-cadence pedaling try 0-1cm back, fast-cadence try 0-1cm forward
HANDLEBAR WIDTH	4 ROAD: Shoulder width MTN: Shoulder width or wider
HANDLEBAR HEIGHT	5 ROAD: Bar should be 0-8cm below saddle height - lower more aerodynamic, higher more comfort MTN: Bar should be 0-5cm below saddle height - lower for flat speed and steep climbing, higher for technical terrain descents and overall increased comfort
HANDLEBAR REACH	6 ROAD: Determined by stem length. The bar should hide the front hub from view while in riding position - bar ahead of hub is more aerodynamic, behind hub for more comfort. MTN: Same as road - ahead for climbing, behind for descending
HANDLEBAR ANGLE	7 ROAD: Adjust so hands rest comfortably on the bar drops or on top of brake hoods MTN: Adjust so bar sweeps back and slightly up
BRAKE POSITIONING	8 ROAD: Align so that brake hoods are level or pointed slightly up MTN: You should not have to bend your wrists in order for your fingers to grip the brake levers. Adjust the levers so that they are in a straight line with your forearms, wrists and fingers

+

COMPONENTS

For additional detailed information about the quality components featured in our 2005 line, visit the websites of the following companies.



SRAM.COM



BIKE.SHIMANO.COM



HAYESBRAKE.COM



AVIDBIKE.COM



DTSWISS.COM



MAVIC.COM



TRUVATIV.COM



FULLSPEEDAHEAD.COM



SELLEITALIA.COM



CAMPAGNOLOUSA.COM



WTB.COM



ANSWERPRODUCTS.COM



EASTONBIKE.COM



FOXRACINGSHOX.COM



RITCHEYLOGIC.COM



MARZOCCHI.COM



MARINBIKES.COM





12 XC FRs										COMPONENTS AND GEOMETRY									
FRAMESET	MODEL NAME	MOUNT VISION PRO				MOUNT VISION				RIFT ZONE				EAST PEAK					
	COLOR	Anodized Black				Anodized Black				Matte Steel Gray				Matte Cosmic Blue					
	SIZES	13.5", 15.5", 17.5", 19"				13.5", 15.5", 17.5", 19"				13.5", 15.5", 17.5", 19"				13.5", 15.5", 17.5", 19"					
	FRAME	6061 Aluminum Twin Monocoque Front, 4" Travel Lightweight Monocoque 4-Bar Link Aluminum Swingarm with Disc Mounts				6061 Aluminum Twin Monocoque Front, 4" Travel Lightweight Monocoque 4-Bar Link Aluminum Swingarm with Disc Mounts				6061 Aluminum Twin Monocoque Front, 4" Travel Lightweight Monocoque 4-Bar Link Aluminum Swingarm with Disc Mounts				6061 Aluminum Twin Monocoque Front, 4" Travel Lightweight Monocoque 4-Bar Link Aluminum Swingarm with Disc Mounts					
	REAR SUSPENSION	Fox Float RP3, with Rebound Adjustment and 3 Position ProPedal Lever Adjustment				Fox Float RP3, with Rebound Adjustment and 3 Position ProPedal Lever Adjustment				Fox Float R, with Rebound Adjustment				Fox Float R, with Rebound Adjustment					
	FORK	Fox Forx FRLT, 100mm of Travel, with Rebound Adjustment, Lockout, Blow off Threshold Adjustment and Air Spring Preload				Fox Forx FRL, 100mm of Travel, with Rebound Adjustment, Lockout and Air Spring Preload				Fox Forx FR, 100mm of Travel, with Rebound Adjustment and Air Spring Preload				Manitou Axel Super, 90-120mm of Travel, with Rapid Travel Wind Down, and Rebound Adjustment					
WHEELSET	HEADSET	WTB Grease Guard Threadless, 1 1/8"				WTB Grease Lite Comp AL Threadless 1 1/8"				WTB Race AL Threadless 1 1/8"				WTB Comp ST Threadless 1 1/8"					
	REAR HUB	DT 240S, Disc, Centerlock Compatible, 32 Hole				WTB Laser Disc Lite, 32 Hole				WTB Laser Disc Lite, 32 Hole				Shimano Disc, 32 Hole					
	FRONT HUB	DT 240S, Disc, Centerlock Compatible, 32 Hole				WTB Laser Disc Lite, 32 Hole				WTB Laser Disc Lite, 32 Hole				Shimano Disc, 32 Hole					
	SPOKES	DT Super Comp 14/16.5/15 Triple Butted, Black Stainless, Alloy Nipples				DT Competition 14/15/14 Butted, Black Stainless, Alloy Nipples				DT 15 Gauge Black Stainless				WTB 15 Gauge Black Stainless					
	RIMS	Mavic XC 717 Disc, 32 Hole				Mavic XM 317 Disc, 32 Hole				Mavic XM 317 Disc, 32 Hole				Mavic XM 117 Disc, 32 Hole					
	TIRES	WTB MotoRaptor, 26" x 2.14" (49/52) Race, DNA Compound Tread Kevlar Bead				WTB MotoRaptor, 26" x 2.14" (49/52) Race, DNA Compound Tread Kevlar Bead				WTB MotoRaptor, Comp, 26" x 2.14" (49/52)				WTB MotoRaptor, Comp, 26" x 2.14" (49/52)					
DRIVETRAIN	SHIFTERS	Shimano XTR				Shimano XT				Shimano Deore				Shimano Deore					
	FRONT DERAILLEUR	Shimano XTR				Shimano XT				Shimano Deore				Shimano Deore					
	REAR DERAILLEUR	Shimano XTR				Shimano XT				Shimano LX				Shimano LX					
	CASSETTE	Shimano XTR 11-34				Shimano XT 11-32				SRAM PG-950, Power Glide II, 9 Speed 11-32				SRAM PG-950, Power Glide II, 9 Speed 11-32					
	CHAIN	Shimano XTR				Shimano XT				Shimano HG53				Shimano HG53					
	CRANKSET	Shimano XTR, 44/32/22				Shimano XT, 44/32/22 with Hollowtech II Arms				TruVativ Firex, 44/32/22 with 2 Alloy Chainrings				TruVativ Five D, 44/32/22 with 1 Alloy Chainring					
COCKPIT	BOTTOM BRACKET	Shimano XTR Big Pipe Billet Integrated with Crankset				Shimano XT Big Pipe Billet Integrated with Crankset				TruVativ ISIS Drive SL				TruVativ Cartridge Sealed					
	SEATPOST	Easton EC70 Carbon				FSA SL-K, Carbon				Comp Alloy Micro Adjust				Comp Alloy Micro Adjust					
	SADDLE	WTB Rocket V Ti, with Love Channel and Comfort Zone, Titanium Rails				WTB Rocket V Ti, with Love Channel and Comfort Zone, Titanium Rails				WTB Laser V Comp, with Love Channel and Comfort Zone, Cromoly Rails				WTB Speed V ATB, with Love Channel and Comfort Zone					
	HANDLEBAR	Easton EC70 Monkey Lite XC Carbon Low Rise, 31.8mm				Easton EA70 Low Rise, 31.8mm				Double Butted Alloy with 1" Rise, 31.8mm				Double Butted Alloy with 1" Rise, 31.8mm					
	STEM	FSA OS115 Alloy Threadless with Carbon Face Plate				FSA OS140 Alloy Threadless				FSA OS170 Alloy Threadless				FSA OS170 Alloy Threadless					
	GRIPS	WTB Moto Grip				WTB Moto Grip				WTB Moto Grip				WTB Moto Grip					
OTHER	BRAKES	Shimano XTR Hydraulic Disc				Avid Juicy 7 Hydraulic Disc				Avid Juicy 5 Hydraulic Disc				Hayes Sole Hydraulic Disc, with New V6, 6" Rotors					
	BRAKE LEVERS	Shimano XTR Hydraulic Disc				Avid Juicy 7 Hydraulic Disc				Avid Juicy 5 Hydraulic Disc				Hayes Hydraulic Disc					
	PEDALS	Crank Bros Egg Beater				Crank Bros Candy C				Shimano M520 Clipless				Composite with Alloy Cage					
GEOMETRY	FRAME SIZE	13.5"	15.5"	17.5"	19"	13.5"	15.5"	17.5"	19"	13.5"	15.5"	17.5"	19"	13.5"	15.5"	17.5"	19"		
	HEAD ANGLE	71°	71°	71°	71°	71°	71°	71°	71°	71°	71°	71°	71°	71°	71°	71°	71°		
	SEAT ANGLE	73°	73°	73°	73°	73°	73°	73°	73°	73°	73°	73°	73°	73°	73°	73°	73°		
	TOP TUBE	20 3/4"	22 1/4"	23"	23 1/2"	20 3/4"	22 1/4"	23"	23 1/2"	20 3/4"	22 1/4"	23"	23 1/2"	20 3/4"	22 1/4"	23"	23 1/2"		
	BB HEIGHT	13"	13"	13"	13"	13"	13"	13"	13"	13"	13"	13"	13"	13"	13"	13"	13"		
	STANDOVER	28"	28 3/4"	29 3/4"	31 1/4"	28"	28 3/4"	29 3/4"	31 1/4"	28"	28 3/4"	29 3/4"	31 1/4"	28"	28 3/4"	29 3/4"	31 1/4"		
	WHEEL BASE	40.5"	42 1/4"	43"	44"	40.5"	42 1/4"	43"	44"	40.5"	42 1/4"	43"	44"	40.5"	42 1/4"	43"	44"		
	CHAIN STAY	16 3/4"	16 3/4"	16 3/4"	16 3/4"	16 3/4"	16 3/4"	16 3/4"	16 3/4"	16 3/4"	16 3/4"	16 3/4"	16 3/4"	16 3/4"	16 3/4"	16 3/4"	16 3/4"		
SEAT POST	27.2mm	27.2mm	27.2mm	27.2mm	27.2mm	27.2mm	27.2mm	27.2mm	27.2mm	27.2mm	27.2mm	27.2mm	27.2mm	27.2mm	27.2mm	27.2mm			

16 TARA FRs				COMPONENTS AND GEOMETRY						
FRAMESET	MODEL NAME	ATTACK TRAIL			WOLF RIDGE			ROCK SPRINGS		
	COLOR	Anodized Black			Matte Coal Gray			Matte Stealth Blue		
	SIZES	15.5", 17.5", 19"			15.5", 17.5", 19"			15.5", 17.5", 19"		
	FRAME	6061 TARA Aluminum Twin Monocoque Front, New 6061 TARA 4"-6" Travel Monocoque 4 Bar Link Aluminum Swingarm with Disc Mounts			6061 TARA Aluminum Twin Monocoque Front, New 6061 TARA 4"-6" Travel Monocoque 4 Bar Link Aluminum Swingarm with Disc Mounts			6061 TARA Aluminum Twin Monocoque Front, New 6061 TARA 4"-6" Travel Monocoque 4 Bar Link Aluminum Swingarm with Disc Mounts		
	REAR SUSPENSION	Fox Float RP3, with Rebound Adjustment and 3 Position ProPedal Lever Adjustment			Fox Float RP3, with Rebound Adjustment and 3 Position ProPedal Lever Adjustment			Fox Float R, with Rebound Adjustment		
	FORK	Fox Talas RLC, 90-130mm			Fox Float RL, 130mm			Fox Vanilla R, 130mm		
WHEELSET	HEADSET	WTB Race AL Threadless 1 1/8"			WTB Race AL Threadless 1 1/8"			WTB Comp ST Threadless 1 1/8"		
	REAR HUB	WTB Laser Disc Lite, 32 Hole			WTB Laser Disc Lite, 32 Hole			Shimano Disc, 32 Hole		
	FRONT HUB	WTB Laser Disc Lite, 32 Hole			WTB Laser Disc Lite, 32 Hole			Shimano Disc, 32 Hole		
	SPOKES	DT 15 Gauge Black Stainless			DT 15 Gauge Black Stainless			DT 15 Gauge Black Stainless		
	RIMS	Mavic XC 717 Disc, 32 Hole			Mavic XM 317 Disc, 32 Hole			Mavic XM 117 Disc, 32 Hole		
	TIRES	WTB Moto Raptor 2.24 (52/54) Race, 26" x 2.24", DNA Compound Tread Kevlar Bead			WTB Moto Raptor 2.24 (52/54) Comp, 26" x 2.24"			WTB Moto Raptor 2.24 (52/54) Comp, 26" x 2.24"		
DRIVETRAIN	SHIFTERS	Shimano XT			Shimano LX			Shimano Deore		
	FRONT DERAILLEUR	Shimano XT			Shimano LX			Shimano Deore		
	REAR DERAILLEUR	Shimano XT			Shimano XT			Shimano Deore		
	CASSETTE	SRAM PG-990, Power Glide II, 9 Speed 11-32			SRAM PG-950, Power Glide II, 9 Speed 11-32			SRAM PG-950, Power Glide II, 9 Speed 11-32		
	CHAIN	Shimano HG73			Shimano HG53			Shimano HG53		
	CRANKSET	Shimano XT, 44/32/22 with Hollowtech II Arms			TruVativ Stylo XR, 44/32/22 with 2 Alloy Chainrings, with Giga X Drive Exterior BB system			TruVativ Five D, 44/32/22 with Power Spline		
COCKPIT	BOTTOM BRACKET	Shimano XT Big Pipe Billet Integrated with Crankset			Giga X Drive Integrated with Crankset			TruVativ Power Spline Cartridge		
	SEATPOST	FSA FR-270, 6061, 30.9mm x 350mm			FSA SL-280, 6061, 30.9mm x 350mm			Comp Alloy Micro Adjust, 30.9mm x 350mm		
	SADDLE	WTB Laser V Race, with Love Channel and Comfort Zone, Cromoly Rails			WTB Laser V Comp, with Love Channel and Comfort Zone, Cromoly Rails			WTB Speed V Comp, with Love Channel and Comfort Zone		
	HANDLEBAR	TruVativ XR Riser Bar, 35mm Rise, 31.8mm			DH Rise Bar, 31.8mm			DH Rise Bar, 31.8mm		
	STEM	FSA FR200 OS Alloy Threadless			FSA FR230 OS Alloy Threadless			FSA FR230 OS Alloy Threadless		
	GRIPS	WTB Weirwolf with Drop Guard End Plugs			WTB Weirwolf with Drop Guard End Plugs			WTB Weirwolf with Drop Guard End Plugs		
OTHER	BRAKES	Hayes HFX Mag Hydraulic Disc, with New V8, 8" Front and New V6, 6" Rear Rotors			Hayes HFX-9 Hydraulic Disc, with New V8, 8" Front and New, V6 6" Rear Rotors			Hayes HFX-9 Hydraulic Disc, with New V8, 8" Front and New V6, 6" Rear Rotors		
	BRAKE LEVERS	Hayes Hydraulic Disc			Hayes Hydraulic Disc			Hayes Hydraulic Disc		
	PEDALS	Crank Bros Candy C			Shimano M520 Cclipless			Shimano M520 Cclipless		
	GEOMETRY	FRAME SIZE	15.5"	17.5"	19"	15.5"	17.5"	19"	15.5"	17.5"
*HEAD ANGLE		68.5°	68.5°	68.5°	68.5°	68.5°	68.5°	68.5°	68.5°	68.5°
*SEAT ANGLE		71.5°	71.5°	71.5°	71.5°	71.5°	71.5°	71.5°	71.5°	71.5°
TOP TUBE		22 1/4"	23"	23 1/2"	22 1/4"	23"	23 1/2"	22 1/4"	23"	23 1/2"
*BB HEIGHT		13 1/4"	13 1/4"	13 1/4"	13 1/4"	13 1/4"	13 1/4"	13 1/4"	13 1/4"	13 1/4"
STANDOVER		29 3/4"	31"	31 1/2"	29 3/4"	31"	31 1/2"	29 3/4"	31"	31 1/2"
WHEEL BASE		43 1/4"	43 3/4"	45 1/4"	43 1/4"	43 3/4"	45 1/4"	43 1/4"	43 3/4"	45 1/4"
CHAIN STAY		17 1/4"	17 1/4"	17 1/4"	17 1/4"	17 1/4"	17 1/4"	17 1/4"	17 1/4"	17 1/4"
SEAT POST		30.9mm	30.9mm	30.9mm	30.9mm	30.9mm	30.9mm	30.9mm	30.9mm	30.9mm
5" SETTING				5" SETTING			5" SETTING			
* CALCULATED WITH RIDER ON BIKE WITH CORRECT SAG IN 5" (MIDDLE) REAR ADJUSTMENT										



20 AXC										COMPONENTS AND GEOMETRY									
FRAMESET	MODEL NAME	ROCKY RIDGE						WILDCAT TRAIL			B-17			NORTHSIDE TRAIL					
	COLOR	Matte Coal Gray						Matte Bronze			Matte Light Bronze			Matte Steel Gray					
	SIZES	Small, Medium, Large						Small, Medium, Large			Small, Medium, Large			Small, Medium, Large					
	FRAME	7005 Aluminum, Oversize Edge Top and Oversize Edge Plus Down Tube, AXC XXL Tri-Burner Seat and Chain Stays, CNC Seat and Chain Stay Bridges						7005 Aluminum, Oversize Edge Top and Oversize Edge Plus Down Tube AXC XXL Tri-Burner Seat and Chain Stays, CNC Seat Stay Bridge			7005 Aluminum, Oversize Edge Top and Oversize Edge Plus Down Tube AXC XXL Tri-Burner Seat and Chain Stays, CNC Seat Stay Bridge			7005 Aluminum, Oversize Edge Top and Oversize Edge Plus Down Tube AXC XXL Tri-Burner Seat and Chain Stays					
	FORK	Marzocchi Dirt Jumper III, 130mm of Travel and Preload Adjustment						Marzocchi EXR Pro Coil, 120mm of Travel and Preload Adjustment			Mantono Splice Comp, 130mm of Travel and Preload Adjustment			Spinner Edge 3, 120mm of Travel and Preload Adjustment					
WHEELSET	HEADSET	WTB Comp ST Threadless 1 1/8"						WTB Comp ST Threadless 1 1/8"			WTB Comp ST Threadless 1 1/8"			Ritchey LB 1 Threadless 1/8"					
	REAR HUB	Shimano Deore Disc, 32 Hole						Shimano Disc, 32 Hole			Shimano Disc, 32 Hole			Shimano Disc, 32 Hole					
	FRONT HUB	Shimano Deore Disc, 32 Hole						Shimano Disc, 32 Hole			Shimano Disc, 32 Hole			Shimano Disc, 32 Hole					
	SPOKES	DT 14 Gauge Black Stainless						WTB 14 Gauge Black Stainless			WTB 14 Gauge Black Stainless			14 Gauge Stainless					
	RIMS	WTB Dual Duty Freeride						Alex DP-20, 32 Hole, Double Wall			Alex TD-20 Disc 32 Hole, Double Wall			Alex TD-20 Disc 32 Hole, Double Wall					
DRIVETRAIN	TIRES	WTB Timber Wolf 26" x 2.3"						WTB Moto Raptor 2.24 (52/54) Comp, 26" x 2.24"			Kenda, Kinetics 26"x 2.35"			Kenda, Kinetics 26"x 2.35"					
	SHIFTERS	Shimano Alivio						Shimano Alivio			Shimano Alivio			Shimano Alivio					
	FRONT DERAILLEUR	Shimano Alivio						Shimano Alivio			Shimano Alivio			Shimano O050					
	REAR DERAILLEUR	Shimano Deore						Shimano Deore			Shimano Alivio			Shimano Alivio					
	CASSETTE	SRAM PG-950, Power Glide II, 8 Speed 11-32						8 Speed 11-32			8 Speed 11-32			8 Speed 11-32					
COCKPIT	CHAIN	IG31						IG31			IG31			IG31					
	CRANKSET	Hussefelt 32/22 Steel and Rockring						TruVativ Five D, 42/32/22 with Power Spline			TruVativ Five D, 42/32/22 with Power Spline			TruVativ X-Flow, 42/34/24, with Power Spline					
	BOTTOM BRACKET	Cartridge Sealed with ISIS Spline						TruVativ Power Spline Cartridge			TruVativ Power Spline Cartridge			TruVativ Power Spline Cartridge					
	SEATPOST	FSA FR-270, 6061, 30.9mm x 350mm						FSA SL-280, 6061, 30.9mm x 350mm			Comp Alloy Micro Adjust, 30.9mm x 400mm			Comp Alloy Micro Adjust, 30.9mm x 400mm					
	SADDLE	WTB Power V Comp, with Love Channel and Comfort Zone, 8mm Rails						WTB Speed V Comp, with Love Channel and Comfort Zone			WTB Speed V ATB, with Love Channel and Comfort Zone			Marin AXC					
OTHER	HANDLEBAR	Truvativ XR Riser Bar, 35mm Rise, 31.8mm						DH Rise Bar, 31.8mm			DH Rise Bar, 31.8mm			Double Butted Alloy with 1" Rise, 31.8mm					
	STEM	FSA FR230 OS Alloy Threadless						FSA FR230 OS Alloy Threadless			Alloy Threadless			Alloy Threadless					
	GRIPS	WTB Weirwolf with Drop Guard End Plugs						WTB Weirwolf with Drop Guard End Plugs			WTB Weirwolf with Drop Guard End Plugs			WTB Weirwolf with Drop Guard End Plugs					
	BRAKES	Hayes HFX-9 Hydraulic Disc, with New V8, 8" Rotors						Hayes HFX-9 Hydraulic Disc, with New V8, 8" Front and New V6, 6" Rear Rotors			Hayes MX-2 HD Mechanical Disc, with New V8, 8" Front and New V6, 6" Rear Rotors			Hayes MX-2 HD Mechanical Disc, with New V6, 6" Rotors					
	BRAKE LEVERS	Hayes HFX-9 Full Hydraulic Disc						Hayes HFX-9 Full Hydraulic Disc			New Pro 3 Finger with Dual Position Leverage Adjustment			New Pro 3 Finger with Dual Position Leverage Adjustment					
GEOMETRY	PEDALS	BMX Platform						BMX Platform			BMX Platform			Composite					
	FRAME SIZE	SMALL	MEDIUM	LARGE	SMALL	MEDIUM	LARGE	SMALL	MEDIUM	LARGE	SMALL	MEDIUM	LARGE						
	SEAT TUBE: ACTUAL CENTER TO CENTER	13"	14"	16"	13"	14"	16"	13"	14"	16"	13"	14"	16"						
	HEAD ANGLE	68°	68°	68°	70°	70°	70°	70°	70°	70°	70°	70°	70°						
	SEAT ANGLE	71°	71°	71°	73°	73°	73°	73°	73°	73°	73°	73°	73°						
	TOP TUBE	22"	22 1/2"	23"	22"	22 1/2"	23"	22"	22 1/2"	23"	22"	22 1/2"	23"						
	BB HEIGHT	12 1/4"	12 1/4"	12 1/4"	12"	12"	12"	12"	12"	12"	12"	12"	12"						
	STANDOVER	31"	31 3/4"	33 1/4"	30 1/4"	30 3/4"	32"	30 1/4"	30 3/4"	32"	30 1/4"	30 3/4"	32"						
	WHEEL BASE	42 1/2"	43"	43 3/4"	42"	42 1/2"	43 1/4"	42"	42 1/2"	43 1/4"	42"	42 1/2"	43 1/4"						
	CHAIN STAY	16 3/4"	16 3/4"	16 3/4"	16 3/4"	16 3/4"	16 3/4"	16 3/4"	16 3/4"	16 3/4"	16 3/4"	16 3/4"	16 3/4"						
SEAT POST	30.9mm	30.9mm	30.9mm	30.9mm	30.9mm	30.9mm	30.9mm	30.9mm	30.9mm	30.9mm	30.9mm	30.9mm							

24 ALLOY HT													COMPONENTS AND GEOMETRY												
	MODEL NAME		INDIAN FIRE TRAIL					NAIL TRAIL					PALISADES TRAIL					HAWK HILL SE							
FRAMESET	COLOR	Gloss Mercury					Matte Bronze					Matte Gunmetal					Brushed Denim Silver								
	SIZES	13", 15", 17", 18.5", 20"					13", 15", 17", 18.5", 20"					13", 15", 17", 18.5", 20"					13", 15", 17", 18.5", 20"								
	FRAME	M6 Triple Butted Six Element Magnesium Enriched Alloy with Butted Edge Top and Down Tubes, Anti-Flex Tri-Burner Seat and Chain Stays, Disc Mounts					7000 Series Full Triple Butted Aluminum with Edge Top Tube and New Hydroform Edge Plus Down Tube, Full Double Butted Seat and Chainstays, Disc Mounts					7000 Series Full Triple Butted Aluminum with Edge Top Tube and New Hydroform Edge Plus Down Tube, Full Double Butted Seat and Chainstays Disc Mounts					7000 Series Triple Butted Aluminum with Edge Top Tube and New Hydroform Edge Plus Down Tube, Disc Mounts								
	FORK	Fox Forx FRL 80mm of Travel, with Rebound Adjustment, Lockout and Air Spring Preload					Manitou Axel Super, 90-120mm of Travel and Rebound Adjustment with Rapid Travel Wind Down					Manitou Axel Comp, 100mm of Travel and Preload Adjustment					Marzocchi MZ Comp, 100mm of Travel and Preload Adjustment								
WHEELSET	HEADSET	WTB Race AL Threadless 1 1/8"					WTB Comp ST Threadless 1 1/8"					WTB Comp ST Threadless 1 1/8"					WTB Comp ST Threadless 1 1/8"								
	REAR HUB	WTB Laser Disc Lite, 32 Hole					Shimano Disc, 32 Hole					Shimano Disc, 32 Hole					Shimano Disc, 32 Hole								
	FRONT HUB	WTB Laser Disc Lite, 32 Hole					Shimano Disc, 32 Hole					Shimano Disc, 32 Hole					Shimano Disc, 32 Hole								
	SPOKES	DT 15/17 butted, Black Stainless, Alloy Nipples					WTB 15 Gauge Black Stainless					WTB 15 Gauge Black Stainless					15 Gauge Stainless								
DRIVETRAIN	RIMS	Mavic XM 317 Disc, 32 Hole					Mavic XM 117 Disc, 32 Hole					WTB Dual Duty XC, 32 Hole, Double Wall					WTB Dual Duty XC, 32 Hole, Double Wall								
	TIRES	IRC Mythos XCII with Kevlar Bead, 26" x 2.1"					IRC Mythos XCII 26" x 2.1"					IRC Mythos XCII 26" x 2.1"					IRC Mythos XCII 26" x 2.1"								
	SHIFTERS	Shimano LX					Shimano Deore					Shimano Deore					Shimano Alivio								
	FRONT DERAILLEUR	Shimano LX					Shimano Deore					Shimano Deore					Shimano Alivio								
COCKPIT	REAR DERAILLEUR	Shimano XT					Shimano LX					Shimano Deore					Shimano Deore								
	CASSETTE	SRAM PG-990, Power Glide II, 9 Speed 11-32					SRAM PG-950, Power Glide II, 9 Speed 11-32					SRAM PG-950, Power Glide II, 9 Speed 11-32					8 Speed 11-32								
	CHAIN	Shimano HG73					Shimano HG53					Shimano HG53					IG31								
	CRANKSET	TruVativ Stylo XR, 44/32/22 with 2 Alloy Chainrings, with Giga X Drive Exterior BB system					TruVativ Firex, 44/32/22 with 1 Alloy Chainring and Power Spline					TruVativ Five D, 44/32/22 with 1 Alloy Chainring and Power Spline					TruVativ Five D, 42/32/22 with Power Spline								
OTHER	BOTTOM BRACKET	Giga X Drive Integrated with Crankset					TruVativ Power Spline Cartridge					TruVativ Power Spline Cartridge					TruVativ Power Spline Cartridge								
	SEATPOST	FSA SL-K, Carbon					FSA SL-280, 6061 Alloy					FSA SL-280, 6061 Alloy					FSA SL-280, 6061 Alloy								
	SADDLE	WTB Rocket V Race CR, with Love Channel and Comfort Zone					WTB Speed V Comp, with Love Channel and Comfort Zone					WTB Speed V ATB, with Love Channel and Comfort Zone					WTB Speed V ATB, with Love Channel and Comfort Zone								
	HANDLEBAR	Double Butted Alloy with 1" Rise, 31.8mm					Double Butted Alloy with 1" Rise, 31.8mm					Double Butted Alloy with 1" Rise, 31.8mm					Double Butted Alloy with 1" Rise, 31.8mm								
GEOMETRY	STEM	FSA OS115 Alloy Threadless					FSA OS170 Alloy Threadless					FSA OS170 Alloy Threadless					FSA OS170 Alloy Threadless								
	GRIPS	WTB Moto Grip					WTB Moto Grip					Dual Density					Dual Density								
	BRAKES	Avid Juicy 5 Hydraulic Disc					Hayes HFX-9 Hydraulic Disc, with New V6, 6" Rotors					Hayes Sole Hydraulic Disc, with New V6, 6" Rotors					Hayes MX-2 XC Mechanical Disc, with New V6, 6" Rotors								
	BRAKE LEVERS	Avid Juicy 5 Hydraulic					Hayes HFX-9 Full Hydraulic Disc					Hayes Hydraulic Disc					Forged Alloy 3 Finger								
PEDALS	Shimano M520 Clipless					Composite with Alloy Cage					Composite with Alloy Cage					Composite with Alloy Cage									
FRAME SIZE	13"	15"	17"	18.5"	20"	13"	15"	17"	18.5"	20"	13"	15"	17"	18.5"	20"	13"	15"	17"	18.5"	20"					
HEAD ANGLE	71°	71°	71°	71°	71°	71°	71°	71°	71°	71°	71°	71°	71°	71°	71°	71°	71°	71°	71°	71°					
SEAT ANGLE	74°	74°	74°	74°	74°	74°	74°	74°	74°	74°	74°	74°	74°	74°	74°	74°	74°	74°	74°	74°					
TOP TUBE	21"	21 1/2"	22 1/4"	23"	23 1/2"	21"	21 1/2"	22 1/4"	23"	23 1/2"	21"	21 1/2"	22 1/4"	23"	23 1/2"	21"	21 1/2"	22 1/4"	23"	23 1/2"					
BB HEIGHT	11 1/2"	11 1/2"	11 1/2"	11 1/2"	11 1/2"	11 1/2"	11 1/2"	11 1/2"	11 1/2"	11 1/2"	11 1/2"	11 1/2"	11 1/2"	11 1/2"	11 1/2"	11 1/2"	11 1/2"	11 1/2"	11 1/2"	11 1/2"					
STANDOVER	29 1/2"	29 3/4"	31"	32 1/4"	33 1/2"	30"	30 3/4"	32 1/4"	33 1/4"	34 1/2"	29 1/2"	29 3/4"	31"	32 1/4"	33 1/2"	29 1/2"	30 1/4"	31 3/4"	32 3/4"	34"					
WHEEL BASE	40 1/2"	41 3/4"	42 1/4"	42 3/4"	43 1/4"	40 1/4"	41 1/4"	42"	43"	43 1/2"	40 1/2"	41 3/4"	42 1/4"	42 3/4"	43 1/4"	40 3/4"	41 1/2"	42 1/4"	43"	43 3/4"					
CHAIN STAY	16 3/4"	16 3/4"	16 3/4"	16 3/4"	16 3/4"	16 3/4"	16 3/4"	16 3/4"	16 3/4"	16 3/4"	16 3/4"	16 3/4"	16 3/4"	16 3/4"	16 3/4"	16 3/4"	16 3/4"	16 3/4"	16 3/4"	16 3/4"					
SEAT POST	27.2mm	27.2mm	27.2mm	27.2mm	27.2mm	27.2mm	27.2mm	27.2mm	27.2mm	27.2mm	27.2mm	27.2mm	27.2mm	27.2mm	27.2mm	27.2mm	27.2mm	27.2mm	27.2mm	27.2mm					

24 ALLOY HT													COMPONENTS AND GEOMETRY												
FRAMESET	MODEL NAME	HAWK HILL					BOBCAT TRAIL					BOLINAS RIDGE					PIONEER TRAIL								
	COLOR	Matte Cosmic Blue					Matte Black					Brushed Polish Matte Silver					Matte Stealth Blue								
	SIZES	13", 15", 17", 18.5", 20"					13", 15", 17", 18.5", 20"					13", 15", 17", 18.5", 20", 15" W					13", 15", 17", 18.5", 20", 15" W								
	FRAME	7000 Series Triple Butted Aluminum with Edge Top Tube and New Hydroform Edge Plus Down Tube, Disc Mounts					7000 Series Butted Aluminum with Edge Top and Down, Disc Mounts					7000 Series Butted Aluminum with Edge Top and Down Tubes					7000 Series Butted Aluminum with Edge Top and Down Tubes								
	FORK	Marzocchi MZ Comp, 100mm of Travel and Preload Adjustment					Spinner Grind AC 323, 80mm of Travel and Preload Adjustment					Spinner Grind 1, 70mm of Travel and Preload Adjustment					Spinner Grind 1, 70mm of Travel and Preload Adjustment								
WHEELSET	HEADSET	WTB Comp ST Threadless 1 1/8"					WTB ST 1 Threadless 1/8"					Ritchey LB 1 Threadless 1/8"					Ritchey LB 1 Threadless 1/8"								
	REAR HUB	Shimano Disc, 32 Hole					Shimano Disc, 32 Hole					Alloy Double Sealed, 36 Hole with QR					Alloy Double Sealed, 36 Hole with QR								
	FRONT HUB	Shimano Disc, 32 Hole					Shimano Disc, 32 Hole					Alloy Double Sealed, 36 Hole with QR					Alloy Double Sealed, 36 Hole with QR								
	SPOKES	15 Gauge Stainless					15 Gauge Stainless					15 Gauge Stainless					15 Gauge Stainless								
	RIMS	Alex TD-20 Disc 32 Hole, Double Wall					Alex TD-20 Disc 32 Hole, Double Wall					Alloy, 36 Hole					Alloy, 36 Hole								
DRIVETRAIN	TIRES	IRC Mythos XCII 26" x 2.1"					IRC Mythos XCII 26" x 2.1"					Kenda, Koyote 26" x 1.95" Knobby					Kenda, Krossplus 26" x 1.95" Dirt/Street								
	SHIFTERS	Shimano Alivio					Shimano Acera					Shimano Altus					Shimano Altus								
	FRONT DERAILLEUR	Shimano Alivio					Shimano T300					Shimano C050					Shimano C050								
	REAR DERAILLEUR	Shimano Deore					Shimano Acera					Shimano Acera					Shimano Altus								
	CASSETTE	8 Speed 11-32					8 Speed 11-32					8 Speed 11-32					Shimano 7 Speed 14-28								
COCKPIT	CHAIN	IG31					IG31					IG31					UG50								
	CRANKSET	TruVativ IsoFlow, 42/32/22					TruVativ X-Flow, 42/34/24					TruVativ X-Flow, 42/34/24					TruVativ X-Flow, 42/34/24								
	BOTTOM BRACKET	TruVativ Cartridge Sealed					TruVativ Cartridge Sealed					TruVativ Cartridge Sealed					TruVativ Cartridge Sealed								
	SEATPOST	Alloy Micro Adjust					Alloy Micro Adjust					Alloy Micro Adjust					Alloy Micro Adjust								
	SADDLE	WTB Speed V ATB, with Love Channel and Comfort Zone					WTB Speed V Sport Extra, with Love Channel and Comfort Zone					Comfort					Comfort								
OTHER	HANDLEBAR	Double Butted Alloy with 1" Rise, 31.8mm					Double Butted Alloy with 1" Rise					Alloy 1" Rise					Alloy 1" Rise								
	STEM	Alloy Threadless					Alloy Threadless					Alloy Threadless					Alloy Threadless								
	GRIPS	Dual Density					Dual Density					Marin Comfort Dual Density					Marin Comfort Dual Density								
	BRAKES	Forged Alloy Linear Pull					Hayes MX-2 XC Mechanical Disc, with New V6, 6" Rotors					Forged Alloy Linear Pull					Forged Alloy Linear Pull								
	BRAKE LEVERS	Forged Alloy 3 Finger					Integrated with Shifters					Integrated with Shifters					Integrated with Shifters								
GEOMETRY	PEDALS	Composite with Alloy Cage					Composite					Composite					Composite								
	FRAME SIZE	13"	15"	17"	18.5"	20"	13"	15"	17"	18.5"	20"	13"	15"	17"	18.5"	20"	15"W	13"	15"	17"	18.5"	20"	15"W		
	HEAD ANGLE	71°	71°	71°	71°	71°	71°	71°	71°	71°	71°	71°	70°	70°	70°	70°	70°	70°	70°	70°	70°	70°	70°		
	SEAT ANGLE	74°	74°	74°	74°	74°	74°	74°	74°	74°	74°	73°	73°	73°	73°	73°	73°	73°	73°	73°	73°	73°	73°		
	TOP TUBE	21"	21 1/2"	22 1/4"	23"	23 1/2"	21"	21 1/2"	22 1/4"	23"	23 1/2"	20 1/2"	21"	21 3/4"	22 1/2"	23"	21"	20 1/2"	21"	21 3/4"	22 1/2"	23"	21"		
	BB HEIGHT	11 1/2"	11 1/2"	11 1/2"	11 1/2"	11 1/2"	11 1/2"	11 1/2"	11 1/2"	11 1/2"	11 1/2"	11 1/2"	11 1/2"	11 1/2"	11 1/2"	11 1/2"	11 1/2"	11 1/2"	11 1/2"	11 1/2"	11 1/2"	11 1/2"	11 1/2"		
	STANDOVER	29 1/2"	30 1/4"	31 3/4"	32 3/4"	34"	29 1/2"	30 1/4"	31 3/4"	32 3/4"	34"	28 3/4"	29 1/2"	30 3/4"	32"	33 1/4"	26 3/4"	28 3/4"	29 1/2"	30 3/4"	32"	33 1/4"	26 3/4"		
	WHEEL BASE	40 3/4"	41 1/2"	42 1/4"	43"	43 3/4"	40 3/4"	41 1/2"	42 1/4"	43"	43 3/4"	40 1/2"	41"	41 3/4"	42 3/4"	43 1/4"	41"	40 1/2"	41"	41 3/4"	42 3/4"	43 1/4"	41"		
	CHAIN STAY	16 3/4"	16 3/4"	16 3/4"	16 3/4"	16 3/4"	16 3/4"	16 3/4"	16 3/4"	16 3/4"	16 3/4"	16 3/4"	16 3/4"	16 3/4"	16 3/4"	16 3/4"	16 3/4"	16 3/4"	16 3/4"	16 3/4"	16 3/4"	16 3/4"	16 3/4"		
	SEAT POST	27 2mm	27 2mm	27 2mm	27 2mm	27 2mm	27 2mm	27 2mm	27 2mm	27 2mm	27 2mm	27 2mm	27 2mm	27 2mm	27 2mm	27 2mm	27 2mm	27 2mm	27 2mm	27 2mm	27 2mm	27 2mm	27 2mm		



34		ALP										COMPONENTS AND GEOMETRY									
FRAMESET	MODEL NAME	HIGHWAY ONE					MILL VALLEY					LUCAS VALLEY					FAIRFAX				
	COLOR	Gloss Mercury with Gloss Carbon Seat Stays					Gloss Pearl White with Gloss Carbon Seat Stays					Brushed Steel Gray with Matte Carbon Seat Stays					Brushed Polish Matte Silver				
	SIZES	13.5", 15.5", 17.5", 19", 20.5"					13.5", 15.5", 17.5", 19", 20.5"					13.5", 15.5", 17.5", 19", 20.5"					13.5", 15.5", 17.5", 19", 20.5"				
	FRAME	700S Aluminum Full Triple Butted Edge Shaped Tubing with Carbon Seatstays and Double Butted Tri-Burner Chainstays (* Please note that the 13.5" size has Aluminum Seat Stays)					700S Aluminum Full Triple Butted Edge Shaped Tubing with Carbon Seatstays and Double Butted Tri-Burner Chainstays (* Please note that the 13.5" size has Aluminum Seat Stays)					700S Aluminum Full Triple Butted Edge Shaped Tubing with Carbon Seatstays and Double Butted Tri-Burner Chainstays (* Please note that the 13.5" size has Aluminum Seat Stays)					7000 Series Full Triple Butted Aluminum with Edge Top Tube and Down Tube Tri-Burner Double Butted Seat and Chainstays				
	FORK	Rigid Carbon Fork					Rigid Carbon Fork					Rigid Carbon Fork					Rigid Carbon Fork				
WHEELSET	HEADSET	Double Sealed 1 Threadless 1/8"					Double Sealed 1 Threadless 1/8"					Double Sealed 1 Threadless 1/8"					Double Sealed 1 Threadless 1/8"				
	REAR HUB	Shimano WH-R550 Wheelset					Shimano WH-R500 Wheelset					Formula, 32 Hole					Formula, 32 Hole				
	FRONT HUB	Shimano WH-R550 Wheelset					Shimano WH-R500 Wheelset					Formula, 32 Hole					Formula, 32 Hole				
	SPOKES	Shimano WH-R550 Wheelset					Shimano WH-R500 Wheelset					14 Gauge Stainless					14 Gauge Stainless				
	RIMS	Shimano WH-R550 Wheelset					Shimano WH-R500 Wheelset					Alex DC-19, CNC Double Wall, 28 Hole Front, 32 Hole Rear					Alex DC-19, CNC Double Wall, 28 Hole Front, 32 Hole Rear				
DRIVETRAIN	TIRES	Vittoria Zaffiro Folding, 700c x 28mm, with Kevlar Bead and Puncture Resistant Belt					Vittoria Zaffiro Folding, 700c x 28mm, with Kevlar Bead and Puncture Resistant Belt					Kenda Road, 700c x 28mm					Kenda Road, 700c x 28mm				
	SHIFTERS	Shimano SL-R440					Shimano SL-R440					Shimano SL-R440-8					Shimano ST-R224, EZ-Fire Plus, 24 Speed				
	FRONT DERAILLEUR	Shimano Tiagra					Shimano Tiagra					Shimano R443					Shimano Sora				
	REAR DERAILLEUR	Shimano 105					Shimano Tiagra					Shimano Sora					Shimano Sora				
	CASSETTE	SRAM PG-950, Power Glide II, 9 Speed 12-26					SRAM PG-950, Power Glide II, 9 Speed 12-26					8 Speed, 12-24					8 Speed, 12-24				
COCKPIT	CHAIN	Shimano HG73					Shimano HG53					IG31					IG31				
	CRANKSET	FSA Carbon Pro Team Triple, 53/39/30					FSA Gossamer Triple, 53/42/30					FSA CFM Triple, 53/42/30					FSA CFM Triple, 53/42/30				
	BOTTOM BRACKET	Shimano Splined					Cartridge Sealed					Cartridge Sealed					Cartridge Sealed				
	SEATPOST	FSA SL-K, Carbon					FSA SL-280, 6061 Alloy					Comp Alloy Micro Adjust					Comp Alloy Micro Adjust				
	SADDLE	WTB Shadow V Extra Race, Carbonara with Love Channel and Comfort Zone					WTB Shadow V Extra Comp, with Love Channel and Comfort Zone					WTB Shadow V Extra Comp, with Love Channel and Comfort Zone					WTB Speed V Sport Extra, with Love Channel and Comfort Zone				
OTHER	HANDLEBAR	Trigon Carbon XC, 150 Gram 31.8mm Flat Bar					6061 Aluminum 170 Gram 31.8mm Flat Bar					6061 Aluminum 170 Gram 31.8mm Flat Bar					6061 Aluminum 170gram Flat Bar				
	STEM	FSA OS115 Alloy Threadless					FSA OS140 Alloy Threadless					FSA OS170 Alloy Threadless					FSA XC170 Alloy Threadless				
	GRIPS	Dual Density					Dual Density					Dual Density					Dual Density				
	BRAKES	Avid Single Digit 7 with Shimano Power Modulator					Avid Single Digit 5 with Power Modulator					Linear Pull with Front Power Modulator					Linear Pull with Front Power Modulator				
	BRAKE LEVERS	Avid Speed Dial 7					Avid Speed Dial 7					Forged Alloy 3 Finger					Integrated with Shifters				
GEOMETRY	PEDALS	None					Composite with Alloy Cage, Toe Clip and Strap					Composite with Alloy Cage, Toe Clip and Strap					Composite with Alloy Cage				
	FRAME SIZE	13"	15.5"	17.5"	19"	20.5"	13"	15.5"	17.5"	19"	20.5"	13"	15.5"	17.5"	19"	20.5"	13"	15.5"	17.5"	19"	20.5"
	HEAD ANGLE	71°	71°	71°	71°	71°	71°	71°	71°	71°	71°	71°	71°	71°	71°	71°	71°	71°	71°	71°	71°
	SEAT ANGLE	73°	73°	73°	73°	73°	73°	73°	73°	73°	73°	73°	73°	73°	73°	73°	73°	73°	73°	73°	73°
	TOP TUBE	20 1/2"	21"	21 3/4"	22 1/2"	23"	20 1/2"	21"	21 3/4"	22 1/2"	23"	20 1/2"	21"	21 3/4"	22 1/2"	23"	20 1/2"	21"	21 3/4"	22 1/2"	23"
	BB HEIGHT	11 1/2"	11 1/2"	11 1/2"	11 1/2"	11 1/2"	11 1/2"	11 1/2"	11 1/2"	11 1/2"	11 1/2"	11 1/2"	11 1/2"	11 1/2"	11 1/2"	11 1/2"	11 1/2"	11 1/2"	11 1/2"	11 1/2"	11 1/2"
	STANDOVER	28"	29 1/4"	30 1/2"	31 3/4"	33"	28"	29 1/4"	30 1/2"	31 3/4"	33"	28"	29 1/4"	30 1/2"	31 3/4"	33"	28"	29 1/4"	30 1/2"	31 3/4"	33"
	WHEEL BASE	40 1/2"	41"	41 3/4"	42 1/2"	42 3/4"	40 1/2"	41"	41 3/4"	42 1/2"	42 3/4"	40 1/2"	41"	41 3/4"	42 1/2"	42 3/4"	40 1/2"	41"	41 3/4"	42 1/2"	42 3/4"
	CHAIN STAY	17 1/4"	17 1/4"	17 1/4"	17 1/4"	17 1/4"	17 1/4"	17 1/4"	17 1/4"	17 1/4"	17 1/4"	17 1/4"	17 1/4"	17 1/4"	17 1/4"	17 1/4"	17 1/4"	17 1/4"	17 1/4"	17 1/4"	17 1/4"
	SEAT POST	27.2MM	27.2MM	27.2MM	27.2MM	27.2MM	27.2MM	27.2MM	27.2MM	27.2MM	27.2MM	27.2MM	27.2MM	27.2MM	27.2MM	27.2MM	27.2MM	27.2MM	27.2MM	27.2MM	27.2MM

SPECIFICATIONS DISCLAIMER: Measurements are accurate at time of catalog production. Specifications are subject to change without notice.



## 2005 MARIN BIKES LIMITED WARRANTY

We take every precaution to insure the longevity, strength and quality of your Marin® bicycle. We are sure that with proper care, your Marin® bicycle will give you many years of riding pleasure. It is important that you are aware that bicycle riding has risks and you can decrease those risks by riding responsibly. Many of our bikes are designed for off-road use. However, it is not to be implied or assumed that our bikes are designed for all types or areas of off-road use. Our mountain bikes are designed for traditional fire road and trail riding, not Extreme use. Our road, city and comfort bikes are designed for traditional paved road riding. By using your Marin® bicycle responsibly and in the appropriate manner for which it was designed, you will have many safe riding experiences. However, Marin® frames and components do have a limited and finite service life. The length of time a frame or part will last is dependent on the construction and materials used in that frame and or component and is also dependent on the maintenance, care, and use or abuse a frame or part is subjected to over its lifetime. With routine inspection and maintenance, as described in your Marin® owner's manual, it is unlikely that parts or frames will fail suddenly. Inspection of fatigue prone parts allows the owner or mechanic to spot fatigue, stress or cracking prior to what could potentially be catastrophic failure. These inspections, like responsible riding, reduce risk. Please note that we do not recommend using child carriers. They can put stresses on your frame that it may not be designed for. They also can be dangerous to your child, as they are not designed to properly protect your child in the event of an accident.

MARIN BIKES LIMITED 2005 FRAME & PARTS WARRANTY (PLEASE NOTE THAT THIS WARRANTY DOES NOT APPLY TO MARIN BIKES INTERNATIONAL DISTRIBUTORS.)  
If you purchased your Marin® bicycle outside the USA or Canada, please contact the Marin Bike's authorized distributor the country of purchase for it's WARRANTY.

The following LIMITED WARRANTY is only valid in the United States of America and Canada.  
This LIMITED WARRANTY is only offered to Marin Bike Authorized dealers and only applies to the original owner of each new Marin® bicycle that is purchased in and remains in Canada, the United States of America, and it's territories. This warranty is only valid, provided the bicycle is purchased from an authorized Marin® Bicycle Dealer. The original owner must provide proof of purchase, to Marin Bikes. This warranty applies only to the original owner and is not transferable. All warranty claims must be processed, through the dealer from whom you purchased your Marin® bicycle, or an authorized Marin® Bicycle Dealer. This warranty is expressly limited to the repair or replacement of a defective frame, fork, or defective part and is the sole remedy of the warranty. Items deemed as warranty will be replaced with; similar model. In the case of a model no longer in stock or production, a credit amount, determined by Marin Bikes towards the purchase of a new item will be given. Subject to the terms, conditions and limitations set forth herein, Marin Bikes, Inc. (a California Corporation) located in Novato, California warrants to the original owner of each new Marin® bicycle:

All Marin® Bikes frames, (Except AXC Frames as covered below) shall be free from defects in workmanship and materials for a period of 5 years from the date of purchase by the original owner.

Marin® AXC bike frames shall be free from defects in workmanship and materials for a period of one year from the date of purchase by the original owner.

The pivot hardware and bearings of Full suspension Marin® frames shall be free from defects in workmanship and materials for a period of 10 years from the date of purchase by the original owner.

38 ROAD		COMPONENTS AND GEOMETRY																								
FRAMESET	MODEL NAME	STELVIO					SAN MARINO					VERONA					ARGENTA					VENEZIA				
	COLOR	Carbon Gloss Black					Gloss Pearl White with Gloss Carbon Seat Stays					Gloss Midnight Blue with Gloss Carbon Seat Stays					Gloss Mercury with Gloss Carbon Seat Stays					Electric Blue				
	SIZES	Small, Medium, Large, X-Large, XX-Large					Small, Medium, Large, X-Large, XX-Large					Small, Medium, Large, X-Large, XX-Large					Small, Medium, Large, X-Large, XX-Large					Small, Medium, Large, X-Large, XX-Large				
	FRAME	CXR Venus 7 Carbon with Alloy Junctions					M6 Triple Butted Six Element Magnesium Enriched Alloy with Carbon Fiber Seat and Chain Stays					Double Butted 700S Aluminum with Carbon Seat Stays					Double Butted 700S Aluminum with Carbon Seat Stays					Double Butted 700S Aluminum with Carbon Seat Stays				
	FORK	Trigon Carbon Monocoque					Road Carbon					Road Carbon					Road Carbon					Road Carbon				
WHEELSET	HEADSET	Campagnolo Chorus Hiddenset Threadless					FSA Orbit C, 1 1/8" for Campagnolo Threadless					Ritchey Logic Comp Zero Integrated Road 1 Threadless 1/8"					Ritchey Logic Comp Zero Integrated Road 1 Threadless 1/8"					Ritchey Logic Comp Zero Integrated Road 1 Threadless 1/8"				
	REAR HUB	FSA RD-600 Wheelset, 24 Hole					FSA RD-400 Wheelset, 24 Hole					Shimano WH-R550 Wheelset					Shimano WH-R500 Wheelset					Formula, 32 Hole				
	FRONT HUB	FSA RD-600 Wheelset, 18 Hole					FSA RD-400 Wheelset, 20 Hole					Shimano WH-R550 Wheelset					Shimano WH-R500 Wheelset					Formula, 28 Hole				
	SPOKES	FSA RD-600 Wheelset, 18 Hole Front, 24 Hole Rear					FSA RD-400 Wheelset, 20 Hole Front, 24 Hole Rear					Shimano WH-R550 Wheelset					Shimano WH-R500 Wheelset					15 Gauge Stainless				
	RIMS	FSA RD-600 Wheelset, 18 Hole Front, 24 Hole Rear					FSA RD-400 Wheelset, 20 Hole Front, 24 Hole Rear					Shimano WH-R550 Wheelset					Shimano WH-R500 Wheelset					Alex R450, 28 Hole Front, 32 Rear, Double Wall, CNC Side Walls				
DRIVETRAIN	TIRES	Vittoria Diamante Pro 700c x 23mm, Kevlar Bead					Vittoria Zaffiro Pro 700c x 23mm					Kenda Konzept Lite 700c x 23mm, Kevlar Bead					Kenda Konzept Lite 700c x 23mm, Kevlar Bead					Kenda Konzept 700c x 23mm				
	SHIFTERS	Campagnolo Chorus Carbon Ergopower 10 Speed					Campagnolo Centaur 10 Speed					Shimano 105 STI					Shimano Tiagra STI					Shimano Sora STI				
	FRONT DERAILLEUR	Campagnolo Chorus					Campagnolo Centaur					Shimano 105					Shimano Tiagra					Shimano 2203				
	REAR DERAILLEUR	Campagnolo Record, 10 Speed, Short Cage					Campagnolo Centaur 10 Speed					Shimano 105					Shimano Tiagra					Shimano Sora				
	CASSETTE	Campagnolo Chorus 10 Speed 11-23					Campagnolo Centaur 10 Speed 11-23					SRAM PG-950, Power Glide II, 9 Speed 12-26					SRAM PG-950, Power Glide II, 9 Speed 12-26					8 Speed, 12-24				
COCKPIT	CHAIN	Campagnolo Record C10					Campagnolo Record C10					Shimano HG73					Shimano HG53					Shimano IG31				
	CRANKSET	FSA K-Force Mega Exo Carbon Road, 53/39 with Mega Exo BB System					FSA SLK Compact Carbon Road, 50/36 with Mega Exo BB System					FSA Carbon Pro Team Triple, 53/39/30					FSA Gossamer Triple, 53/42/30					FSA CFM, 53/42/30				
	BOTTOM BRACKET	FSA Mega Exo BB System, Integrated with Crankset					FSA Mega Exo BB System, Integrated with Crankset					Shimano Splined					Cartridge Sealed					Cartridge Sealed				
	SEATPOST	FSA SL-K, Carbon					FSA SL-K, Carbon					Pro Carbon Fiber Micro Adjust					Comp Alloy Micro Adjust					Comp Alloy Micro Adjust				
	SADDLE	Selle Italia SLR-XP					Selle Italia C2 Special					Selle Italia Octavia					Selle Italia XO with Extra Padding					Marin Pro Road				
OTHER	HANDLEBAR	FSA K-Wing Aero Anatomic Carbon, 31.8					FSA Wing Pro Aero-Anatomic Road, 31.8					FSA Wing Pro Aero-Anatomic Road, 31.8					FSA Wing Pro Aero-Anatomic Road, 31.8					6061 Alloy 31.8				
	STEM	FSA OS115 Alloy Threadless with Carbon Face Plate					FSA OS140 Alloy Threadless					FSA OS140 Alloy Threadless					FSA OS140 Alloy Threadless					Alloy Threadless				
	GRIPS	Cork					Cork					Cork					Cork					Cork				
	BRAKES	Campagnolo Chorus					Campagnolo Centaur					Shimano 105 Dual Pivot					Shimano Tiagra Dual Pivot					Dual Pivot				
	BRAKE LEVERS	Integrated with Shifters					Integrated with Shifters					Integrated with Shifters					Integrated with Shifters					Integrated with Shifters				
GEOMETRY	PEDALS	None					None					None					Alloy, Toe Clip and Strap					Alloy, Toe Clip and Strap				
	FRAME SIZE	S	M	L	XL	XXL	S	M	L	XL	XXL	S	M	L	XL	XXL	S	M	L	XL	XXL	S	M	L	XL	XXL
	SEAT TUBE: ACTUAL CENTER TO CENTER	45cm	48cm	51cm	54cm	57cm	45cm	48cm	51cm	54cm	57cm	45cm	48cm	51cm	54cm	57cm	45cm	48cm	51cm	54cm	57cm	45cm	48cm	51cm	54cm	57cm
	SEAT TUBE: THEORETICAL LEVEL TOP TUBE CENTER TO CENTER	49cm	51cm	55.5cm	58.5cm	61.5cm	49cm	51cm	55.5cm	58.5cm	61.5cm	49cm	51cm	55.5cm	58.5cm	61.5cm	49cm	51cm	55.5cm	58.5cm	61.5cm	49cm	51cm	55.5cm	58.5cm	61.5cm
	SEAT TUBE: ACTUAL CENTER TO TOP	49cm	51.5cm	54.5cm	57.5cm	60.5cm	49cm	51.5cm	54.5cm	57.5cm	60.5cm	49cm	51.5cm	54.5cm	57.5cm	60.5cm	49cm	51.5cm	54.5cm	57.5cm	60.5cm	49cm	51.5cm	54.5cm	57.5cm	60.5cm
	HEAD ANGLE	71.5°	72°	73.0°	73.0°	73.0°	71.5°	72°	73.0°	73.0°	73.0°	71.5°	72°	73.0°	73.0°	73.0°	71.5°	72°	73.0°	73.0°	73.0°	71.5°	72°	73.0°	73.0°	73.0°
	SEAT ANGLE	75°	74.5°	73.0°	73.0°	73.0°	75°	74.5°	73.0°	73.0°	73.0°	75°	74.5°	73.0°	73.0°	73.0°	75°	74.5°	73.0°	73.0°	73.0°	75°	74.5°	73.0°	73.0°	73.0°
	TOP TUBE: ACTUAL	519mm	535mm	566mm	568mm	589mm	519mm	535mm	566mm	568mm	589mm	519mm	535mm	566mm	568mm	589mm	519mm	535mm	566mm	568mm	589mm	519mm	535mm	566mm	568mm	589mm
	TOP TUBE: THEORETICAL LEVEL TOP TUBE	529mm	542mm	576mm	580mm	600mm	529mm	542mm	576mm	580mm	600mm	529mm	542mm	576mm	580mm	600mm	529mm	542mm	576mm	580mm	600mm	529mm	542mm	576mm	580mm	600mm
	CHAIN STAY	410mm	410mm	410mm	410mm	410mm	410mm	410mm	410mm	410mm	410mm	410mm	410mm	410mm	410mm	410mm	410mm	410mm	410mm	410mm	410mm	410mm	410mm	410mm	410mm	410mm
	BB HEIGHT	268mm	268mm	268mm	268mm	268mm	268mm	268mm	268mm	268mm	268mm	268mm	268mm	268mm	268mm	268mm	268mm	268mm	268mm	268mm	268mm	268mm	268mm	268mm	268mm	268mm
	HEAD TUBE	115mm	130mm	160mm	190mm	220mm	115mm	130mm	160mm	190mm	220mm	115mm	130mm	160mm	190mm	220mm	115mm	130mm	160mm	190mm	220mm	115mm	130mm	160mm	190mm	220mm
	STANDOVER	99.9cm	100.5cm	100.7cm	100.9cm	101cm	99.9cm	100.5cm	100.7cm	100.9cm	101cm	99.9cm	100.5cm	100.7cm	100.9cm	101cm	99.9cm	100.5cm	100.7cm	100.9cm	101cm	99.9cm	100.5cm	100.7cm	100.9cm	101cm
	WHEEL BASE	27.2mm	27.2mm	27.2mm	27.2mm	27.2mm	27.2mm	27.2mm	27.2mm	27.2mm	27.2mm	27.2mm	27.2mm	27.2mm	27.2mm	27.2mm	27.2mm	27.2mm	27.2mm	27.2mm	27.2mm	27.2mm	27.2mm	27.2mm	27.2mm	27.2mm
	SEAT POST	50mm	50mm	50mm	50mm	50mm	50mm	50mm	50mm	50mm	50mm	50mm	50mm	50mm	50mm	50mm	50mm	50mm	50mm	50mm	50mm	50mm	50mm	50mm	50mm	50mm
FORK OFFSET	50mm	50mm	50mm	50mm	50mm	50mm	50mm	50mm	50mm	50mm	50mm	50mm	50mm	50mm	50mm	50mm	50mm	50mm	50mm	50mm	50mm	50mm	50mm	50mm	50mm	

Suspension forks, and Rear shocks on suspension bikes are not covered under this warranty. They are covered under the stated warranty of the original manufacturer. Such original manufacturer's warranties are to be processed through the manufacturer or the manufacturer's authorized Warranty Center.

All of our warranties are solely under the condition that the bicycle was operated under normal conditions and use and was properly maintained. The user assumes the risk of any personal injury or damage to the bicycle or other losses if the bicycle is used at any time for stunt or trick riding, jumping, drops, acrobatics, dirt biking or similar activities. Bicycle Motocross, competitive riding, commercial use, with power or motor assistance of any kind, riding with heavy loads, extreme riding or anything other than normal and intended use. Please note: Riding off of buildings, cliffs, bridges, car-sized boulders and other types of large drops do not constitute what we consider normal and intended uses. This warranty does not cover any Marin ® frame or bicycle part that has; deteriorated through usage or wear and tear, or gets corrosion that was caused by climatic conditions. This warranty does not apply to any Marin® frame or bicycle part that has; been damaged or fails as a result of accident, crash, collision, abuse, neglect, misuse, alterations, modifications, improper assembly, repairs improperly performed, Sandblasting, sanding, grinding, wire brushing, filing, welding, brazing, drilled holes, anodizing, repainting, chrome plating, frame tube deformation caused by bike stand clamping, has damage caused by lack of reasonable and proper periodic maintenance, or has damages caused by installation of parts & accessories not originally intended or compatible with the bicycle as sold. This warranty does not apply to paint or finish. This warranty does not apply if the original factory installed decals are removed or original finish has been modified or removed. Marin Bikes Inc. shall not be responsible for incidental or consequential damages. Labor charges for parts changes, frame swaps, or incidental costs such as transportation to and from an authorized dealer for repair or replacement of any defective part or accessory are not covered in the warranty. All Labor charges for warranty service are the responsibility of the bicycle's owner. The use of replacement parts and accessories not conforming to Marin® specifications, or modifications not recommended or approved in writing by Marin® will cause this warranty to be nullified. Please note that sometimes the salt on the roads or in the air can cause internal rust perforation on cro-moly steel frames. This is not covered under this warranty. A broken or bent part or frame does not necessarily indicate a defect in workmanship or materials. Marin Bikes Inc. reserves the right to solely determine what constitutes a defect in workmanship or materials on any Marin® bicycle frame or original equipment bicycle part. Warranty applies only to those bicycles assembled by an authorized Marin Bikes dealer.

This warranty gives you specific legal rights, which may vary from state to state.  
Marin Bikes Inc. does not authorize or permit anyone else, including Marin® dealers, representatives or distributors, to enlarge, to extend, to modify, or to make any other warranties, expressed or implied, for Marin Bikes Inc.

© 2004 MARIN BIKES, INC.

Specifications subject to change without notice. Not all models available in all sizes in all countries.

Marin, Pine Mountain, Eldridge Grade, Bear Valley, Highway One, Mill Valley, Lucas Valley, Fairfax, Muirwoods, Novato, Point Reyes, Pioneer Trail, Bolinas Ridge, Bobcat Trail, Hawk Hill, Palisades Trail, Nail Trail, Indian Fire Trail, Stinson, Redwood, Kentfield, Larkspur, San Rafael, San Anselmo, Sausalito, Venezia, Argentina, Verona, San Marino, Stelvio, Bayview Trail, Hidden Canyon, Drakes Beach, Hearts Desire Beach, East Peak, Rift Zone, Mount Vision, Rock Springs, Wolf Ridge, Attack Trail, Northside Trail, B-17, Wildcat Trail, Rocky Ridge, Quad-Link, FRS and TARA are registered trademarks of Marin Bikes, Inc.

Please take time to read the Owner's Manual that comes with your bike.

All bikes come fully equipped with CPSC approved reflectors, however, for night time riding, it is the rider's responsibility to use an adequate lighting system that consists of front and rear lights.

Many models come with long arm, V brakes or disc brakes. These brakes are extremely powerful and we recommend that you practice on a flat surface until you are comfortable with the performance of these brakes.

Lightweight handlebars should be replaced periodically.

Please wear a helmet while riding, respect and share the trails.

Action & Studio Photography: Simon Cudby, CudbyPhoto.com  
Design: Transmutations.com





46 CITY		COMPONENTS AND GEOMETRY															
FRAMESET	MODEL NAME	Sausalito	San Anselmo	San Rafael	Larkspur												
	COLOR	Matte Gravel	Brushed Champagne Tint	Matte Cosmic Blue	Brushed Polish Matte Silver												
	SIZES	13.5", 15.5", 17.5", 19", 20.5"	13.5", 15.5", 17.5", 19", 20.5", 15.5"W	13.5", 15.5", 17.5", 19", 20.5", 15.5"W	13.5", 15.5", 17.5", 19", 20.5", 15.5"W												
	FRAME	7000 Series Triple Butted Aluminum with Edge Top Tube and New Edge Down Tube, Tri-Burner Seat and Chainstays	7000 Series Triple Butted Aluminum with Edge Top Tube and New Edge Down Tube, Tri-Burner Seat and Chainstays	7000 Series Double Butted Aluminum with Edge Top Tube and New Edge Down Tube, Tri-Burner Seat and Chainstays	7000 Series Double Butted Aluminum with Edge Top Tube and New Edge Down Tube, Tri-Burner Seat and Chainstays												
	FORK	SR Suntour NRX 7500, 63mm of Travel, with Preload Adjustment and Lockout	SR Suntour NRX 7500, 63mm of Travel, with Preload Adjustment and Lockout	Spinner Odesa LX, 63mm of Travel, with Preload Adjustment and Lockout	Cromoly Rigid fork												
WHEELSET	HEADSET	WTB ST 1 Threadless 1/8"	WTB Comp ST Threadless 1 1/8"	WTB Comp ST Threadless 1 1/8"	WTB ST 1 Threadless 1/8"												
	REAR HUB	Shimano Deore, 36 Hole	Shimano RM40, 36 Hole with QR	Alloy Double Sealed, 36 Hole with QR	Alloy Double Sealed, 36 Hole with QR												
	FRONT HUB	Shimano Deore, 36 Hole	Alloy Double Sealed, 36 Cap Hole with QR	Alloy Double Sealed, 36 Cap Hole with QR	Alloy Double Sealed, 36 Hole with QR												
	SPOKES	14 Gauge Stainless	14 Gauge Stainless	14 Gauge Stainless	14 Gauge Stainless												
	RIMS	WTB Tour Duty, 36 Hole, Double Wall	WTB Dual Duty, 36 Hole, Double Wall	Alex TA-19, 36 Hole, Double Wall, CNC Side Walls	Alex TA-19, 700c, 36 Hole, Double Wall, CNC Side Walls												
DRIVETRAIN	TIRES	WTB All Terrainasaurus, 700c x 32/30mm	Maxxis Overdrive, 700c x 35mm with Kevlar Inside Puncture Protection	Kenda Kwest, 700c x 35mm with K-Shield Puncture Protection	Kenda Kwest, 700c x 35mm with K-Shield Puncture Protection												
	SHIFTERS	Shimano Deore	Shimano Alivio	Shimano Acera	Shimano Altus												
	FRONT DERAILLEUR	Shimano Deore	Shimano Nexave T-401	Shimano C-100	Shimano C-100												
	REAR DERAILLEUR	Shimano LX	Shimano Deore	Shimano Alivio	Shimano Acera												
	CASSETTE	SRAM PG-950, Power Glide II, 9 Speed 11-32	8 Speed 11-32	8 Speed Mini Mega Range, 11-28	8 Speed 11-32												
COCKPIT	CHAIN	Shimano HG53	IG31	IG31	IG31												
	CRANKSET	Shimano Deore, Hollowtech, 48/36/26 with Octalink	Suntour CR-420, 48/38/28, with Alloy Outer Chaining	Suntour CR-410, 48/38/28	Suntour CR-410, 48/38/28												
	BOTTOM BRACKET	Shimano Sphined	TruVativ Cartridge Sealed	Cartridge Sealed	Cartridge Sealed												
	SEATPOST	Suspension Post 300mm	Suspension Post 300mm	Suspension Post 300mm	Suspension Post 300mm												
	SADDLE	WTB Comfort V, with Love Channel and Comfort Zone	WTB Comfort V, with Love Channel and Comfort Zone	WTB Comfort V, with Love Channel and Comfort Zone	WTB Comfort V, with Love Channel and Comfort Zone												
OTHER	HANDLEBAR	Double Butted Alloy with 1" Rise	Double Butted Alloy with 1" Rise	Alloy 1" Rise	Alloy 1" Rise												
	STEM	Alloy Adjustable with 0° to 60° Rise	Alloy Adjustable with 0° to 60° Rise	Alloy Adjustable with 0° to 60° Rise	Alloy Adjustable with 0° to 60° Rise												
	GRIPS	Marin Comfort Dual Density	Marin Comfort 100% Kraton	Dual Density	Dual Density												
	BRAKES	Shimano Deore with Power Modulator	Linear Pull with Front Power Modulator	Forged Alloy Linear Pull with Power Modulator	Forged Alloy Linear Pull with Power Modulator												
	BRAKE LEVERS	Integrated with Shifters	Forged Alloy 3 Finger	Integrated with Shifters	Integrated with Shifters												
GEOMETRY	PEDALS	Composite with Alloy Cage	Composite with Alloy Cage	Composite	Composite												
	FRAME SIZE	13.5" 15.5" 17.5" 19" 20.5" 15.5"W	13.5" 15.5" 17.5" 19" 20.5" 15.5"W	13.5" 15.5" 17.5" 19" 20.5" 15.5"W	13.5" 15.5" 17.5" 19" 20.5" 15.5"W												
	HEAD ANGLE	71° 71° 71° 71° 71° NA	71° 71° 71° 71° 71° NA	71° 71° 71° 71° 71° NA	71° 71° 71° 71° 71° NA												
	SEAT ANGLE	73° 73° 73° 73° 73° NA	73° 73° 73° 73° 73° NA	73° 73° 73° 73° 73° NA	73° 73° 73° 73° 73° NA												
	TOP TUBE	20 1/2" 21" 21 3/4" 22 1/2" 23" NA	20 1/2" 21" 21 3/4" 22 1/2" 23" NA	20 1/2" 21" 21 3/4" 22 1/2" 23" NA	20 1/2" 21" 21 3/4" 22 1/2" 23" NA												

49 CITY CONT.		COMPONENTS AND GEOMETRY															
FRAMESET	MODEL NAME	Kentfield	Point Reyes	Novato	Muirwoods												
	COLOR	Matte Gunmetal	Matte Smoke	Matte Gunmetal	Matte Black												
	SIZES	13.5", 15.5", 17.5", 19", 20.5", 15.5"W	13", 15", 17", 18.5", 20"	13", 15", 17", 18.5", 20"	13", 15", 17", 18.5", 20"												
	FRAME	7005 Series Aluminum with Edge Top Tube and New Edge Down Tube Tri-Burner Seat and Chainstays	7005 Series Aluminum Full Triple Butted Edge Shaped Tubing with Tri-Burner Full Double Butted Seat and Chainstays with Disc Mounts	7005 Aluminum Full Triple Butted Edge Shaped Tubing with Tri-Burner Seat and Chainstays with Disc Mounts	Double Butted Cromoly Front Triangle with Edge Shaped Tubing with Double Butted Anti-Flex Tri-Burner Seat and Chainstays												
	FORK	Cromoly Rigid fork	RFE Carbon	7000 Series Aluminum Rigid 1 1/8" Disc	Cromoly Rigid Fork												
WHEELSET	HEADSET	Double Sealed 1 1/8" Threaded	WTB Race AL Threadless 1 1/8"	WTB Comp ST Threadless 1 1/8"	Ritchey LB 1 Threadless 1/8"												
	REAR HUB	Alloy Double Sealed, 36 Hole with QR	Shimano Disc, 32 Hole with Locking QR	Shimano Disc, 32 Hole with Locking QR	Alloy Double Sealed, 32 Hole with QR												
	FRONT HUB	Alloy Double Sealed, 36 Hole with QR	Shimano Disc, 32 Hole with Locking QR	Shimano Disc, 32 Hole with Locking QR	Alloy Double Sealed, 32 Hole with QR												
	SPOKES	14 Gauge Stainless	WTB 15 Gauge Black Stainless	WTB 15 Gauge Black Stainless	WTB 15 Gauge Black Stainless												
	RIMS	Alloy, 36 Hole	Mavic XM 317 Disc, 32 Hole	WTB Dual Duty XC with CNC, 32 Hole, Double Wall	WTB Dual Duty XC with CNC, 32 Hole, Double Wall												
DRIVETRAIN	TIRES	Kenda Kwest, 700c x 35mm with K-Shield Puncture Protection	WTB Slickosaurus 26" x 1.5"	CST 26" x 1.4" with Kevlar Inside Puncture Protection	CST 26" x 1.4" with Kevlar Inside Puncture Protection												
	SHIFTERS	Shimano Altus	Shimano LX	Shimano Deore	Shimano Alivio												
	FRONT DERAILLEUR	Shimano TY-30	Shimano Nexave T-401	Shimano Nexave T-401	Shimano Nexave T301												
	REAR DERAILLEUR	Shimano Acera	Shimano LX	Shimano Deore	Shimano Deore												
	CASSETTE	Shimano 7 Speed 14-28	Shimano 9 Speed 12-25	SRAM PG-950, Power Glide II, 9 Speed 12-26	8 Speed 11-32												
COCKPIT	CHAIN	UG50	Shimano HG53	Shimano HG53	IG31												
	CRANKSET	SR Suntour XCC-100, 48/36/28	TruVativ Firex XR, Trekking, 48/38/28 with 1 Alloy Chaining	TruVativ Five D, 48/38/28 with 1 Alloy Chaining	TruVativ IsoFlow, Comfort, 48/38/28												
	BOTTOM BRACKET	Cartridge Sealed	TruVativ ISIS Drive SL BB	TruVativ Power Spline Cartridge	TruVativ Cartridge Sealed												
	SEATPOST	Suspension Post 300mm	Comp Alloy Micro Adjust	Alloy Micro Adjust	Alloy Micro Adjust												
	SADDLE	Marin Comfort	WTB Speed V Street Smart, with Love Channel and Comfort Zone	WTB Speed V Street Smart, with Love Channel and Comfort Zone	WTB Speed V ATB, with Love Channel and Comfort Zone												
OTHER	HANDLEBAR	Alloy 2" Rise	Double Butted Alloy with 1" Rise, 31.8mm	Double Butted Alloy with 1" Rise	Double Butted Alloy with 1" Rise												
	STEM	Forged Alloy with 30° Rise	FSA OS170 Alloy Threadless	Alloy Threadless	Alloy Threadless												
	GRIPS	Dual Density	WTB Street Smart with Drop Guard End Plugs	WTB Street Smart with Drop Guard End Plugs	WTB Street Smart with Drop Guard End Plugs												
	BRAKE	Forged Alloy Linear Pull with Power Modulator	Hayes HFX-9 XC Hydraulic Disc, with New VB, 6" Rotors	Forged Alloy Linear Pull	Forged Alloy Linear Pull												
	BRAKE LEVERS	Integrated with Shifters	Hayes HFX-9 Full Hydraulic Disc	New Pro 3 Finger with Dual Position Leverage Adjustment	Forged Alloy 3 finger												
GEOMETRY	PEDALS	Composite	BMX Platform	BMX Platform	Composite with Alloy Cage												
	FRAME SIZE	13.5" 15.5" 17.5" 19" 20.5" 15.5"W	13" 15" 17" 18.5" 20"	13" 15" 17" 18.5" 20"	13" 15" 17" 18.5" 20"												
	HEAD ANGLE	71° 71° 71° 71° 71° NA	70° 70° 70° 70° 70° NA	70° 70° 70° 70° 70° NA	70° 70° 70° 70° 70° NA												
	SEAT ANGLE	73° 73° 73° 73° 73° NA	73° 73° 73° 73° 73° NA	73° 73° 73° 73° 73° NA	73° 73° 73° 73° 73° NA												
	TOP TUBE	20 1/2" 21" 21 3/4" 22 1/2" 23" 21"	20 1/2" 21" 21 3/4" 22 1/2" 23" NA	20 1/2" 21" 21 3/4" 22 1/2" 23" NA	20 1/2" 21" 21 3/4" 22 1/2" 23" NA												

52		COMFORT										54		CRUISERS										COMPONENTS AND GEOMETRY									
		MODEL NAME					REDWOOD					STINSON					DRAKES BEACH					HEARTS DESIRE BEACH											
FRAMESET	COLOR	Brushed Champagne Tint										Brushed Polish Matte Silver					Brushed Champagne Tint					Brushed Polish Matte Silver											
	SIZES	13", 15", 17", 18.5", 20", 15"W										13", 15", 17", 18.5", 20", 15"W					17", 15"W					15"W											
	FRAMES	7000 Series Butted Aluminum with Edge Top and Down Tubes										7000 Series Butted Aluminum with Edge Top and Down Tubes					7005 Aluminum Men's and Women's Frame					7005 Aluminum Women's Frame											
	FORK	Spinner EnRoute AC, 63mm of Travel, with Lockout and Preload Adjustment										Spinner EnRoute AC, 63mm of Travel and Preload Adjustment					Cromoly Rigid					Cromoly Rigid											
WHEELSET	HEADSET	WTB Comp ST Threadless 1 1/8"										Double Sealed 1 1/8" Threaded					1"					1"											
	REAR HUB	Alloy Double Sealed 32 Hole with QR										Alloy Double Sealed, 36 Hole with QR					Coaster Brake					Coaster Brake											
	FRONT HUB	Alloy Double Sealed 32 Hole with QR										Alloy Double Sealed, 36 Hole with QR					Alloy Sealed					Alloy Sealed											
	SPOKES	15 Gauge Black Stainless										15 Gauge Stainless					14 Gauge Black Stainless					14 Gauge Stainless											
DRIVETRAIN	RIMS	Alex TA-19 32 Hole, Double Wall, CNC Side Walls										Alloy, 36 Hole					Alloy, 36 Hole					Alloy, 36 Hole											
	TIRES	Kenda, Krossplus 26" x 1.95" Dirt/Street										Kenda, Krossplus 26" x 1.95" Dirt/Street					Kenda, Flame 26" x 2.125"					Kenda, Flame 26" x 2.125"											
	SHIFTERS	Shimano Alivio										Shimano Altus					NA					NA											
	FRONT DERAILLEUR	Shimano Nexave T300										Shimano TY-30					NA					NA											
COCKPIT	REAR DERAILLEUR	Shimano Alivio										Shimano Altus					NA					NA											
	CASSETTE	8 Speed 11-32										Shimano 7 Speed, 14-28					16T Cog					16T Cog											
	CHAIN	IG31										UG50					KMC					KMC											
	CRANKSET	Suntour CR-420, 48/38/28, with Alloy Outer Chaining										Suntour XCC-100, 48/38/28					Alloy 170mm, 44 Tooth					Alloy 170mm, 44 Tooth											
OTHER	BOTTOM BRACKET	Cartridge Sealed										Cartridge Sealed					Semi-Cartridge Sealed					Semi-Cartridge Sealed											
	SEATPOST	Suspension Post 300mm										Suspension Post 300mm					Alloy					Alloy											
	SADDLE	Marin Comfort										Marin Comfort					Lounge Chair Comfort					Lounge Chair Comfort											
	HANDLEBAR	Alloy 2" Rise Comfort										Alloy 2" Rise Comfort					Long Horn Alloy					Long Horn Alloy											
GEOMETRY	STEM	Alloy Threadless Adjustable with 0° to 60° Rise										Forged Alloy with Adjustable Rise					Alloy					Alloy											
	GRIPS	Dual Density										Dual Density					Dual Density					Dual Density											
	BRAKE	Forged Alloy with Linear Spring										Forged Alloy Linear Pull					Coaster Brake					Coaster Brake											
	BRAKE LEVERS	Forged Alloy 3 finger										Integrated with Shifters					NA					NA											
	PEDALS	Composite with Alloy Cage										Composite					Slipper / Flip Flop Compatible Composite					Slipper / Flip Flop Compatible Composite											
	EXTRAS	NA										NA					Front and Rear Fenders, Alloy Kick Stand					Front and Rear Fenders, Alloy Kick Stand											
FRAME SIZE		13"	15"	17"	18.5"	20"	15" W	13"	15"	17"	18.5"	20"	15" W	15" W			15" W	15" W	15" W														
HEAD ANGLE		70°	70°	70°	70°	70°	70°	70°	70°	70°	70°	70°	70°	69°			69°	69°															
SEAT ANGLE		73°	73°	73°	73°	73°	73°	73°	73°	73°	73°	73°	73°	71°			71°	71°															
TOP TUBE		20 1/2"	21"	21 3/4"	22 1/2"	23"	21"	20 1/2"	21"	21 3/4"	22 1/2"	23"	21"	23"			23 1/2"	23"															
BB HEIGHT		11 1/2"	11 1/2"	11 1/2"	11 1/2"	11 1/2"	11 1/2"	11 1/2"	11 1/2"	11 1/2"	11 1/2"	11 1/2"	11 1/2"	11 3/4"			11 3/4"	11 3/4"															
STANDOVER		28 3/4"	30"	31 3/4"	33"	34"	27"	28 3/4"	30"	31 3/4"	33"	34"	27"	26 3/4"			30 1/4"	26 3/4"															
WHEEL BASE		41"	41 3/4"	42 1/2"	43 1/2"	44"	41 3/4"	41"	41 3/4"	42 1/2"	43 1/2"	44"	41 3/4"	43 1/2"			44 1/4"	43 1/2"															
CHAIN STAY		17 1/4"	17 1/4"	17 1/4"	17 1/4"	17 1/4"	17 1/4"	17 1/4"	17 1/4"	17 1/4"	17 1/4"	17 1/4"	17 1/4"	18"			18"	18"															
SEAT POST		27.2MM	27.2MM	27.2MM	27.2MM	27.2MM	27.2MM	27.2MM	27.2MM	27.2MM	27.2MM	27.2MM	27.2MM	27.0MM			27.0MM	27.0MM															



LOCATION IS EVERYTHING.

RIDE HERE  
+ 05

MARIN COUNTY, CALIFORNIA

TRAILS	LANDMARKS	TOWNS
1 Bayview Trail	12 Bear Valley	28 Fairfax
2 Bobcat Trail	13 Bolinas Ridge	29 Kentfield
3 Eldridge Grade	14 Drakes Beach	30 Larkspur
4 Indian Fire Trail	15 East Peak	31 Mill Valley
5 Nail Trail	16 Golden Gate Bridge	32 Novato
6 Northside Trail	17 Golden Gate Park	33 San Anselmo
7 Pioneer Trail	18 Hawk Hill	34 San Francisco Downtown
8 Rock Springs	19 Highway One	35 San Rafael
9 Rocky Ridge	20 Marin Bikes Headquarters	36 Sausalito
10 Wildcat Trail	21 Mount Tamalpais	37 Stinson
11 Wolf Ridge	22 Mount Vision	
	23 Muirwoods	
	24 Pacific Ocean	
	25 Pine Mountain	
	26 Point Reyes	
	27 The Presidio	

Pick a Destination, Enjoy the Ride.

We design our bikes based on the geography that makes up Marin County, from trails to towns, the bikes are named after the locations where we love to ride. This map highlights some of our favorite spots so that you can get a sense of the real places that have inspired us from day one.



RIDE HERE

+  
**05**

INTERNATIONAL DISTRIBUTORS:

AUSTRALIA	<a href="#">Cycle Plus</a>	61395531800
AUSTRIA	<a href="#">Marin Europe</a>	99119612340
CANARY ISLANDS	<a href="#">A. Suanzes</a>	34928226812
COSTA RICA	<a href="#">Xcesso</a>	115062903382
CYPRUS	<a href="#">Goodtones</a>	35722661517
DENMARK	<a href="#">Rolsted</a>	4523252020
ESTONIA	<a href="#">Oü A.M.K. Velo</a>	3724431359
FINLAND	<a href="#">Bike Stuff Finland Oy</a>	35832606086
FRANCE	<a href="#">Sacim</a>	241961500
GERMANY	<a href="#">Marin Europe</a>	499119612340
GUATEMALA	<a href="#">Bike 'N More</a>	50223667697
ITALY	<a href="#">Freewheeling</a>	390544461525
JAPAN	<a href="#">Fun Fancy Co. Ltd.</a>	81727859525
KOREA	<a href="#">Bumil Trading Company</a>	118225516992
NOUMEA, NEW CALEDONIA	<a href="#">Comptoir Des Cycles</a>	687274305
NORTH NEW ZEALAND	<a href="#">Cycles Nz</a>	6496259979
SOUTH NEW ZEALAND	<a href="#">Penny Sports Cycles</a>	6433791520
BERGEN, NORWAY	<a href="#">Sykkelsenteret A/S</a>	4755212490
OSLO, NORWAY	<a href="#">Sorensen Sykler</a>	4722192060
POLAND	<a href="#">Bikershop</a>	48124233262
RUSSIA	<a href="#">Alpinetrade</a>	7951659875
SINGAPORE	<a href="#">Trekology Bikes</a>	36564662673
SLOVENIA, CROATIA	<a href="#">CS Trade</a>	38642802000
SOUTH AFRICA	<a href="#">B. Slotar Pty Ltd.</a>	3341106
SOUTH AFRICA	<a href="#">West Rand Cycles</a>	27833016507
SWEDEN	<a href="#">Marin Sweden</a>	4618381340
TRINIDAD	<a href="#">Merlin</a>	8686239184
UK	<a href="#">ATB Sales</a>	441424753566
VENEZUELA	<a href="#">Latin Bikes</a>	5822851160

MARIN BIKES CAN BE FOUND ALL OVER THE WORLD. IN ADDITION TO THE UNITED STATES, OUR EXTENSIVE NETWORK OF RETAILERS AND DISTRIBUTORS ARE ALSO LOCATED INTERNATIONALLY.

ANYWHERE MARIN BIKES ARE SOLD YOU CAN BE SURE THAT THE RETAILER IS AN INDUSTRY EXPERT WHO WILL PUT YOU AT EASE AND ASK THE RIGHT QUESTIONS SO THAT YOUR BIKE PURCHASE IS AS SMOOTH AS YOUR RIDE. OUR GOAL IS TO NOT ONLY PUT YOU ON A BIKE, BUT TO PUT YOU ON THE RIGHT BIKE. WE WANT YOU TO GET OUT AND RIDE WHEREVER YOU ARE AND OUR RETAILERS ARE THERE TO MAKE THAT AS EASY AS POSSIBLE FOR YOU.

OUR COMMITMENT TO QUALITY AND CUSTOMER SATISFACTION IS EXEMPLIFIED BY THE WARRANTY YOU RECEIVE WHEN YOU CHOOSE MARIN. OUR RETAILERS WILL BE HAPPY TO DISCUSS THE DIFFERENT WARRANTY OPTIONS THAT ARE AVAILABLE TO MARIN CUSTOMERS.

FOR A LIST OF MARIN DEALERS VISIT:

[WWW.MARINBIKES.COM](http://WWW.MARINBIKES.COM)

**MARIN BIKES** → 265 BEL MARIN KEYS BLVD., NOVATO, CA 94949

**T** → 415-382-6000

800-222-7557

**F** → 415-382-6100

ITEM NUMBER : ACA-SWCUS-REG • DESCRIPTION : 05 WC PRODUCT GUIDE USA DEALER BIKE CATALOG • PRICE : \$1.00



DESIGNED IN MARIN COUNTY, CALIFORNIA

