



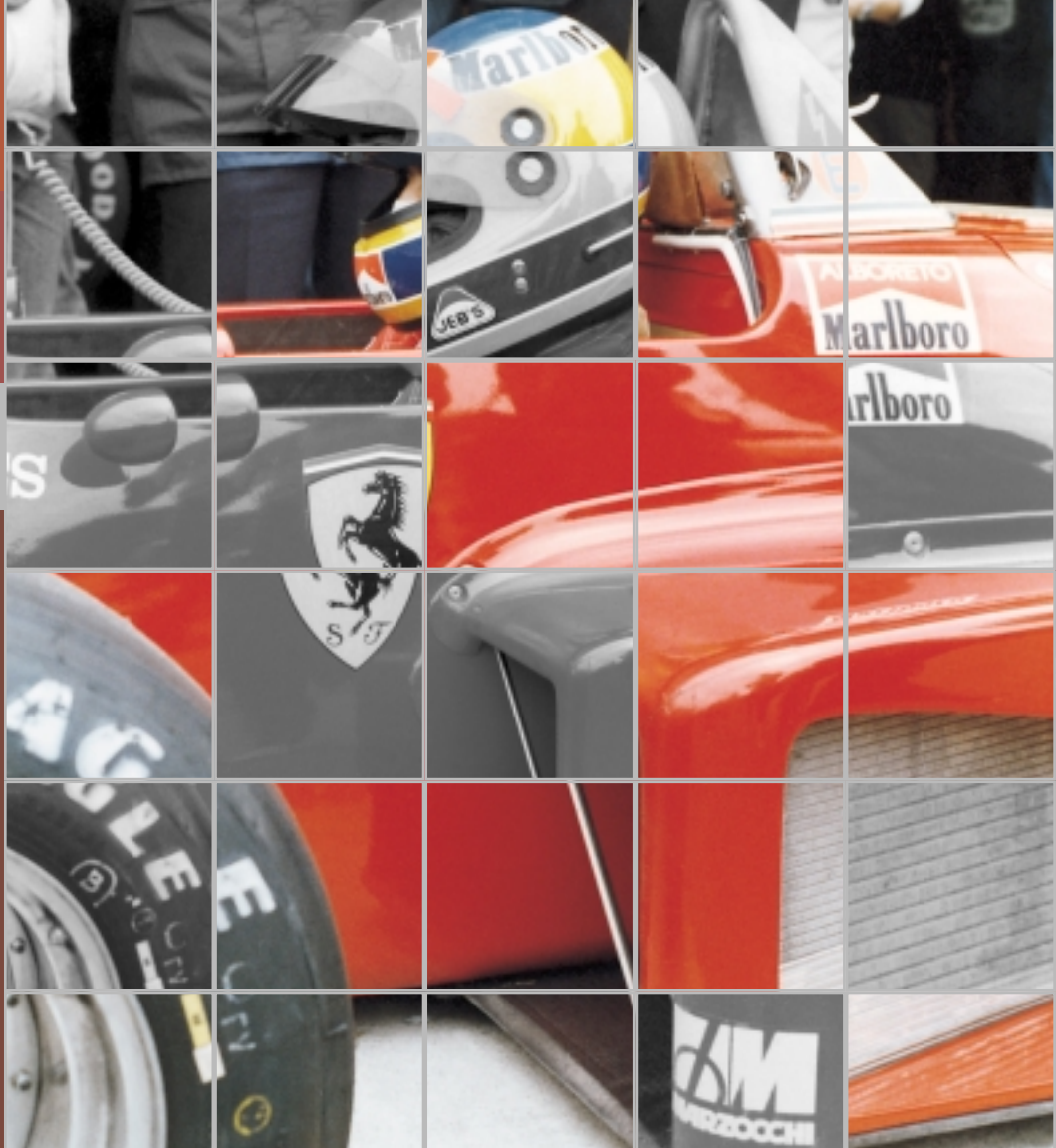
MARZOCCHI 2004



# SINCE 1949 MARZOCCHI

OVER FIFTY YEARS AGO, IN BOLOGNA, ITALY,  
1949, BROTHERS STEFANO AND GUGLIELMO  
MARZOCCHI FOUNDED MARZOCCHI SPA ITALIA.

TODAY MARZOCCHI SUSPENSION IS ONE OF THE  
WORLD'S PREMIER MANUFACTURERS OF  
MOTORCYCLE SUSPENSION SYSTEMS. IN THE EARLY  
'90S, SENSING THE RISE IN POPULARITY OF  
MOUNTAIN BIKING, MARZOCCHI USED ITS EXTENSIVE  
KNOWLEDGE BASE TO DEVELOP SUSPENSION FORKS  
FOR A NEW BREED OF MOUNTAIN BIKERS. WITH MORE  
THAN 50 YEARS' EXPERIENCE DEVELOPING THE  
WORLD'S BEST MOTOCROSS SUSPENSION SYSTEMS,  
IT TOOK NO TIME FOR MARZOCCHI TO BECOME THE  
BENCHMARK IN HARDCORE MOUNTAIN BIKE  
SUSPENSION. OUR DESIGNS—STRONGER AND MORE  
DURABLE THAN ANYTHING ELSE ON THE MARKET—  
GAVE BIRTH TO A NEW INCARNATION OF MOUNTAIN  
BIKING KNOWN TODAY AS "FREERIDING".



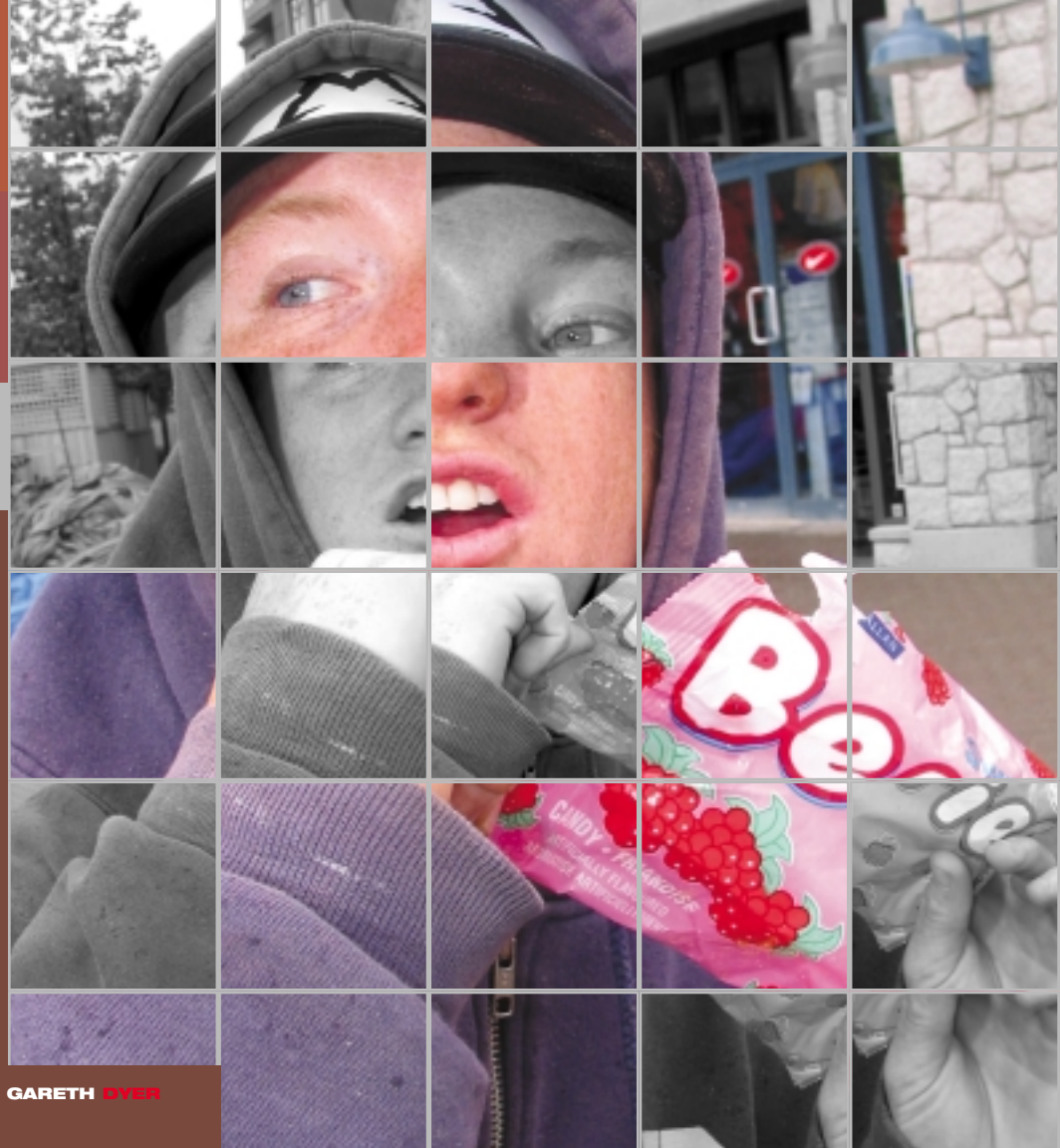




# THE PROFESSIONAL SOULRIDERS

THEY RIDE THE BEST, WE SPONSOR MOST OF  
THE TOP FREERIDERS IN THE WORLD.

RICHIE SCHLEY WADE SIMMONS THOMAS  
VANDERHAM DAVE WATSON ROBBIE BOURDON  
BRETT TIPPIE IAN MOULY LISA LAFROY GARETH  
OYEN TYLER KLASSEN MIKE KIRKADZE JOHN COWAN  
RYAN LARSEN DANGEROUS MOMO NARBACX KATRINA  
STRAND CUREY LIELENG JOE SCHWARTZ RANDY  
SPANGLER CHRIS DUNCAN BENNEN TRACY  
MOSELEY FADREN BAREL NICOLAS VOUILLOZ LESLIE  
TOMLINSON PAOLA PEZZO



GARETH OYEN



**WADE SIMMONS**



**THOMAS VANDERHAM**



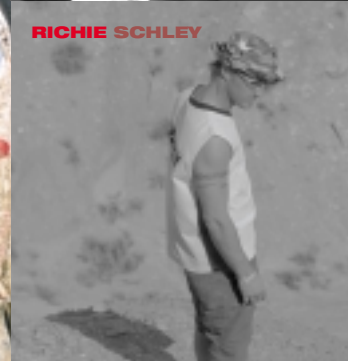
**RYAN LEECH**



**LISA LAFROY**



**RICHIE SCHLEY**



**IAN MOULT**



## OPEN BATH DAMPING

MARZOCCHI HAS BEEN USING OPEN BATH TECHNOLOGY SINCE THE BEGINNING OF THE Bomber LINE. OPEN BATH DAMPING IS ADAPTED DIRECTLY FROM OUR MOTOCROSS FORK TECHNOLOGY WITH 54 YEARS OF REFINEMENT. IT'S NOT A BOAST WHEN WE SAY WE KNOW MORE ABOUT OIL DAMPING THAN ANY OTHER SUSPENSION COMPANY IN THE INDUSTRY.

THE BASICS OF AN OPEN BATH SYSTEM ARE SIMPLE: THE INTERNALS OF THE FORK ARE BATHED IN OIL, WHICH ACTS AS A DAMPER, A LUBRICANT AND A COOLANT. OIL IS SUPERIOR TO ANY OTHER KNOWN SUBSTANCE FOR DAMPING QUALITY. OIL DAMPING LETS US TAKE THE GUESSWORK OUT OF SUSPENSION TUNING. OUR FORKS DON'T HAVE A SLEW OF DIFFERENT KNOBS AND ADJUSTERS FOR SHOW. USING OUR SOPHISTICATED SPEED SENSITIVE SYSTEMS, WE'VE DESIGNED OUR SUSPENSION DAMPING TO AUTOMATICALLY PROVIDE THE RIGHT AMOUNT OF SHOCK ABSORPTION. OUR DAMPING REACTS TO HOW HARD AND FAST YOU ENCOUNTER IMPACTS. THE SLOWER THE FORK COMPRESSES, THE LESS DAMPING IS NEEDED. THE FASTER AND HARDER THE FORK COMPRESSES, THE MORE DAMPING IS REQUIRED TO ABSORB THE FORCE AND RESIST BOTTOMING OUT. BY FLOWING OIL THROUGH A SERIES OF CIRCUITS OR VALVES, DAMPING CAN BE VARIED CONTINUALLY AND ACCURATELY. WE GIVE YOU CONTROL OVER THE IMPORTANT FUNCTIONS AND ALLOW THE FORK TO DO THE REST OF THE WORK. OIL ALSO LUBRICATES THE SEALS AND STANCHIONS OF A FORK PROVIDING STICTION-FREE TRAVEL. FINALLY, IT HELPS KEEP THE INTERNALS OF THE FORK COOL, WHICH ALLOWS THE FORK TO OPERATE CONSISTENTLY IN A VARIETY OF CONDITIONS AND TEMPERATURES.

WE RECOGNIZE THAT AN OPEN BATH SYSTEM HAS A HIGHER VOLUME OF OIL AND SLIGHT INCREASE IN WEIGHT OVER CLOSED SYSTEMS, BUT THE CORRESPONDING INCREASE IN PERFORMANCE IS EXPONENTIAL. NO OTHER FORK FEELS AS SMOOTH OR CONTROLLED AS A MARZOCCHI. AFTER ALL THESE YEARS OF BEING THE ONLY COMPANY USING OPEN BATH TECHNOLOGY, SOME OF OUR COMPETITORS ARE FINALLY TRYING TO EMULATE OUR SYSTEM, BUT NONE WILL BE ABLE TO GIVE YOU THE RESPONSE AND HANDLING OF A MARZOCCHI SUSPENSION FORK. AS WE CONTINUE TO WORK COUNTLESS HOURS PERFECTING OUR DAMPING SYSTEMS, YOU, THE RIDER BENEFITS AND OUR COMPETITORS CAN ONLY TRY TO KEEP US IN THEIR SIGHTS.

## SSV & SSVF

SSV (SPEED SENSITIVE VALVING) IS OUR SIMPLE YET SOPHISTICATED WAY TO PROVIDE CONSISTENT FADE-FREE DAMPING PERFORMANCE. OUR SSV SYSTEM USES FIVE DAMPING CIRCUITS PER LEG TO INSTANTLY DELIVER UNSURPASSED DAMPING COMFORT AND CONTROL. THESE VALVES OPERATE IN THE COMPRESSION AND REBOUND PHASE ALLOWING VARYING AMOUNTS OF OIL TO FLOW THROUGH THE SYSTEM ACCORDING TO FORCE AND SPEED OF IMPACT. SSV TECHNOLOGY IS DERIVED FROM OUR MOTORCYCLE DIVISION PROVIDING YEARS OF

DURABILITY UNDER EXTREME CONDITIONS. SSV IS CONFIGURED IN TWO WAYS, FIRST THE NON-ADJUSTABLE SSV SYSTEM AND SECONDLY, THE SSV SYSTEM WITH INTERNAL REBOUND ADJUSTMENT. THE INTERNAL REBOUND ADJUSTMENT IS ACCOMPLISHED BY REMOVING THE TOP CAPS AND INSERTING A HEX KEY INTO THE VALVE AND EITHER CLOSING OR OPENING FOR GREATER OR LESSER REBOUND DAMPING.

SSVF IS OUR "SPEED SENSITIVE VALVE FLOATING" WITH A SPECIALLY DESIGNED FLOATING VALVE THAT FURTHER ENHANCES THE SSV CONCEPT. THE FLOATING VALVE INSTANTLY LETS OIL FLOW THROUGH THE FIRST VALVE CIRCUIT WITH NO RESISTANCE PROVIDING GREATER INITIAL AND SMALL BUMP SENSITIVITY. AS OIL FLOW INCREASES IN VELOCITY AND VOLUME, THE FLOATING VALVE PROVIDES MORE OIL FLOW RESISTANCE AND HENCE MORE DAMPING PERFORMANCE. THE SSVF SYSTEM USES AN EXTERNAL KNOB TO CONTROL THE REBOUND DAMPING.

BOTH SYSTEMS (SSV & SSVF), CAN BE FURTHER FINE-TUNED BY CHANGES IN THE OIL VISCOSITY AND VALVE PORTING.



## HSCV CARTRIDGE

WE ARE CONTINUALLY REFINING OUR HIGH SPEED COMPRESSION VALVE (HSCV) DAMPING. THIS YEAR WE'VE ADAPTED HSCV TO THE MOST TALKED-ABOUT NEW FORK, THE 888R. THE HSCV CARTRIDGES IN THE 888R ARE AS CLOSE AS YOU CAN GET TO A MOTOCROSS CARTRIDGE IN A MOUNTAIN BIKE FORK WITHOUT THE ADDITIONAL WEIGHT OF A FULL-ON MOTO CARTRIDGE. THE HSCV REGULATES OIL FLOWING THROUGH THE BOTTOM OF THE CARTRIDGE VIA WAFER THIN SHIMS AND A UNIQUELY DESIGNED VALVE. AS THE FORK COMPRESSES AND OIL STARTS FLOWING THROUGH THE VALVE, THE SHIMS FLEX ACCORDING TO IMPACT, SPEED, FORCE, RIDER WEIGHT, ETC; COMPRESSION DAMPING IS INSTANTLY AND AUTOMATICALLY ADJUSTED. THIS MEANS WHEN YOU WHACK A SHARP-EDGE BUMP OR LAND A DROP NOSE-DOWN, THE HSCV WORKS TO ELIMINATE HARSH BOTTOMING AND LOSS OF CONTROL, WHICH LETS YOU STICK TECHNICAL LANDINGS AND PREPARE FOR THE NEXT DROP. NEW FOR 2004, WE ARE OFFERING AIR ASSIST STANDARD ON ALL SINGLE CROWN HSCV FORKS (AVAILABLE AFTERMARKET FOR SUPER T). AN AIR ASSIST ALLOWS FOR A GREATER RANGE OF ADJUSTMENT THAN A STANDARD MECHANICAL STYLE PRELOAD TO ACCOMMODATE RIDERS OF WIDELY VARYING WEIGHT AND RIDING STYLE.

HSCV IS USED IN ALL OF OUR HIGH-END, CARTRIDGE STYLE FORKS. FROM THE Z150 FR TO THE MARATHON S, THESE ARE THE FORKS THAT TOP RIDERS RIDE WHEN THEY CHOOSE THEIR OWN EQUIPMENT. THERE IS NO OTHER DAMPING SYSTEM ON THE MARKET THAT PRODUCES DAMPING QUALITY AND CONSISTENCY ON PAR WITH HSCV. ALL YOU HAVE TO DO IS RIDE ONE TO FEEL THE DIFFERENCE.



THE CROWN AND STANCHIONS OF EVERY MARZOCCHI SINGLE CROWN FORK ARE ASSEMBLED BY A PROCESS CALLED CRYOFIT. THE CRYOFIT PROCESS IS BASED ON THE SIMPLE PRINCIPLE THAT METAL ALLOYS EXPAND WHEN HEATED AND CONTRACT WHEN COOLED. BY TAKING ADVANTAGE OF THIS CHARACTERISTIC, WE ARE ABLE TO MAKE A BOND BETWEEN CROWN AND STANCHION THAT IS MUCH STRONGER THAN ANY OTHER CONVENTIONAL METHOD. THE ENTIRE PROCESS IS PERFORMED BY OUR ROBOTIC MACHINE, WHICH OUR INDUSTRIAL DIVISION DESIGNED SPECIFICALLY FOR US. THE PROCESS BEGINS BY CHECKING THE EXACT TOLERANCES OF EVERY CROWN AND STANCHION. THE STANCHION TUBES ARE THEN PLACED IN A CRYOGENIC TANK OF LIQUID NITROGEN TO COOL AND SHRINK, WHILE THE CROWN IS PLACED IN AN OVEN TO HEAT AND EXPAND. AFTER PRESSING THESE THREE COMPONENTS TOGETHER (TWO STANCHIONS AND ONE CROWN) AND ALLOWING THE MATERIAL TO RETURN TO ROOM TEMPERATURE, THE THREE COMPONENTS ARE NEARLY WELDED TOGETHER PROVIDING SUPERB STRENGTH AND STIFFNESS.



## DON'T BE A FORK ABUSER!

Marzocchi Bomber suspension forks are among the most durable and technologically advanced forks on the market today. However, no fork can withstand misuse, abuse, or improper use that, over a short period of time, can potentially cause your fork to fail. Misuse and abuse occur when you try hazardous stunts, crash hard or repeatedly hit large objects, like rocks and trees straight-on, 50/50 landings, flat landings, nose-dive landings, or ride beyond your capabilities. This kind of abuse and misuse will generate heavy stress loads on suspension forks that can eventually cause them to fail. The harder you ride, the more you must inspect and maintain your forks.

Marzocchi makes four types of forks for different styles of riding. Please use the appropriate model of fork to fit the specific style of your riding: XC, Freeride, DH/Extreme Freeride and Dirt Jump/Street. We cannot detail every possible situation you may come across, but it is the rider's responsibility to ride within the limits of his or her equipment. For example, if you attempt even a small drop on an XC bike, you greatly increase the chance of bike failure resulting in a crash because the bike was not designed for that type of use. See the intended use information to pick out which fork is right for you and always ride within your ability. If you have taken some serious crashes and you think your fork might be bent, deformed, cracked, or chipped, no matter how slight, immediately have a Certified Marzocchi Repair Center inspect the fork. If you ride in wet and muddy conditions, or constantly wash your bike, always dry it and keep an eye out for corrosion. Moisture will corrode the metal and non-metal components of your fork and other bike parts. Remember - Even the strongest forks will fail if they are misused, abused, or improperly used!

Ride Fast, Ride Smart.

### QR20 PRO 20 AXLE SYSTEM

IF YOU WANT TO RUN BIG BRAKES OR VALUE MAXIMUM STEERING PRECISION, IT'S TIME TO MOVE UP TO QR20 PRO. USING A 20MM AXLE INCREASES BOTH STEERING PRECISION AND TORSIONAL RIGIDITY AS WELL AS ALLOWS THE USE OF AN 8" FRONT DISC BRAKE. OUR QR20 PRO SYSTEM ALLOWS YOU TO USE A 20MM FRONT AXLE WHILE RETAINING THE FREEDOM OF BEING ABLE TO REMOVE THE FRONT WHEEL WITHOUT TOOLS.

FOR 2004, WE ARE OFFERING A DH VERSION OF OUR BEEFED UP QR20 PRO SYSTEM. BY POPULAR DEMAND, SUPER T AND JUNIOR T FORKS WILL UTILIZE QB20, A MODIFIED BOLT-THROUGH CLAMP SYSTEM ADAPTED FROM OUR QR20 PRO SYSTEM.

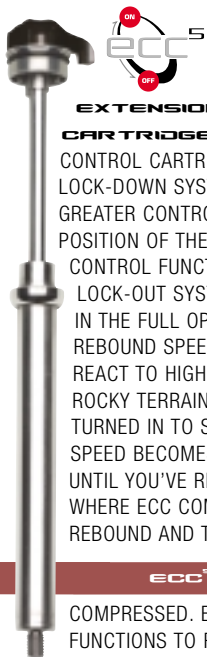


### MAGNESIUM MONOLITE

MARZOCCHI USES MONOLITE MAGNESIUM ONE PIECE CASTING ON NEARLY ALL OF OUR FORK MODELS (29" FORKS AND Z1 WEDGE EXCLUDED). MARZOCCHI'S MAGNESIUM MONOLITE PROVIDES CONFIDENCE INSPIRING RIGIDITY, RAZOR SHARP STEERING PRECISION AND NIMBLE HANDLING DUE TO IT'S LIGHTER WEIGHT DESIGN. UNSPRUNG WEIGHT (THE WEIGHT OF THE LOWER FORK COMPONENT) IS REDUCED ALLOWING THE FORK TO REACT MORE QUICKLY AS BUMPS ARE ENCOUNTERED. FOR 2004, ALL FORKS USING THE 32MM FR MONOLITE WILL ACCOMMODATE A 2.7 TIRE.





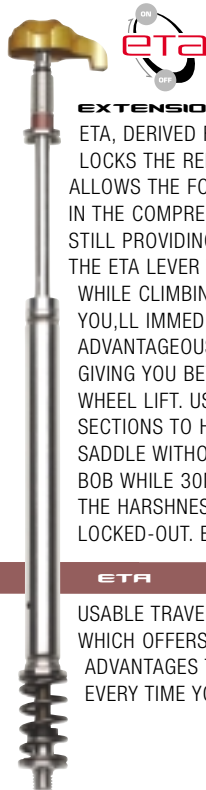


#### **EXTENSION CONTROL**

**CARTRIDGE ECC®** "EXTENSION CONTROL CARTRIDGE" IS A 5-CLICKER LOCK-DOWN SYSTEM THAT GIVES THE RIDER GREATER CONTROL OVER THE FEEL AND POSITION OF THE SUSPENSION. EXTENSION CONTROL FUNCTIONS AS A REBOUND LOCK-OUT SYSTEM SO WHEN THE ECC IS IN THE FULL OPEN POSITION, THE REBOUND SPEED IS FAST AND READY TO REACT TO HIGH-SPEED DESCENTS AND ROCKY TERRAIN. AS THE ECC CLICKER IS TURNED IN TO SETTING 3 OR 4, REBOUND SPEED BECOMES PROGRESSIVELY SLOWER UNTIL YOU'VE REACHED THE 5TH POSITION WHERE ECC COMPLETELY LOCKS OUT THE REBOUND AND THE SUSPENSION STAYS

**ECC®**

COMPRESSED. EXTENSION CONTROL FUNCTIONS TO REDUCE THE FRONT-END RIDE HEIGHT MAKING STEEP CLIMBS EASIER BY SHIFTING THE RIDER'S WEIGHT FORWARD AND ELIMINATING THE "HILL CLIMB WHEELIE". THE MIDDLE SETTINGS ARE GREAT FOR FAST RACE START SPRINTS OR CLIMBING ROCKY UP HILLS WHERE SUSPENSION ACTION IS STILL NEEDED, BUT WITHOUT EXCESSIVE BOBBING. ECC® CAN ONLY BE FOUND ON "DOPPIO AIR" FORK MODELS.

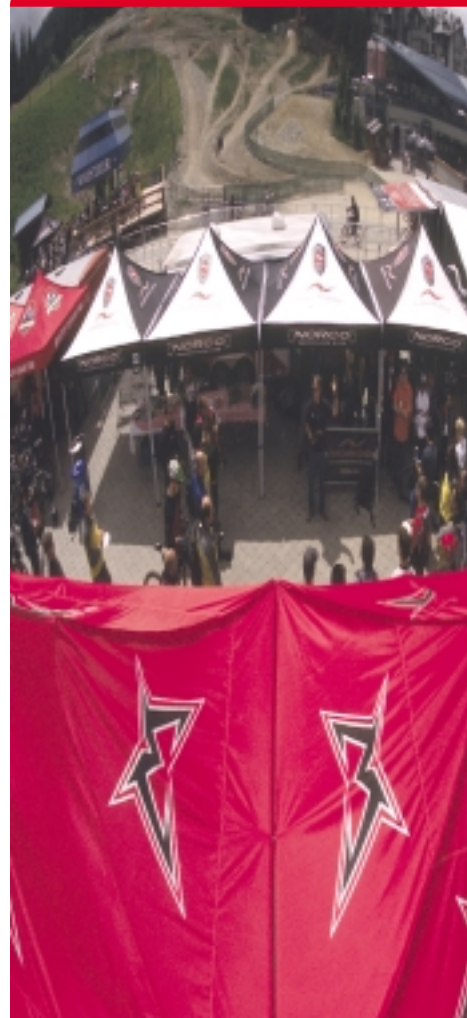


#### **EXTENSION TRAVEL ADJUST**

ETA, DERIVED FROM OUR ECC CONCEPT, LOCKS THE REBOUND OF THE FORK AND ALLOWS THE FORK TO STAY LOCKED DOWN IN THE COMPRESSED POSITION WHILE STILL PROVIDING 30MM OF TRAVEL. FLIP THE ETA LEVER TO THE "ON" POSITION WHILE CLIMBING A STEEP SECTION AND YOU'LL IMMEDIATELY NOTICE THE MORE ADVANTAGEOUS CLIMBING POSITION GIVING YOU BETTER TRACTION WITH LESS WHEEL LIFT. USE IT ON FAST FIRE ROAD SECTIONS TO HAMMER OUT OF THE SADDLE WITHOUT UNNECESSARY FORK BOB WHILE 30MM OF TRAVEL STILL TAKES THE HARSHNESS OUT OF RIDING WHILE LOCKED-OUT. ETA IS AN INSTANT AND

**ETA**

USABLE TRAVEL REDUCTION SYSTEM WHICH OFFERS YOU ON-THE-TRAIL ADVANTAGES THAT WILL BENEFIT YOU EVERY TIME YOU RIDE.





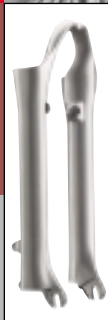


**marzocchi**  
BUILT SUPERIOR [WWW.MARZOCCHI.COM](http://WWW.MARZOCCHI.COM)

## SERIES ENDURANCE

DEVELOPED AND ENGINEERED  
IN THE MARZOCCHI FACTORIES IN BOLOGNA, ITALY

MARZOCCHI WAS THERE WHEN MARATHON RACING WAS BORN. ENDURANCE RACES AND 24-HOUR EVENTS ARE INCREASINGLY POPULAR, AND COMPONENTS THAT ADDRESS THE UNIQUE NEEDS OF LONG DISTANCE RIDING ARE IN HIGH DEMAND. MARATHON RACERS WANT FORKS THAT ARE DURABLE. THEY WANT SMOOTH OPERATION, MILE AFTER MILE. THESE CUTTING EDGE DESIGNS SATISFY THOSE NEEDS. THESE FORKS ARE EXPERIENCED TO THE CORE, AND THEY'LL SEE THE SPORT OF MARATHON RACING INTO ITS OLD AGE.



MG MARATHON MONOLITE  
ONE PIECE ARCH & SLIDERS







#### MARATHON SL

- 85MM OR 105MM TRAVEL
- OPEN BATH DOPPIO AIR CARTRIDGE
- [ECC<sup>5</sup>] 5-POSITION EXTENSION CONTROL CARTRIDGE
- EXTERNAL POSITIVE & NEGATIVE AIR
- MG MARATHON MONOLITE ONE PIECE ARCH & SLIDERS
- 30MM ALLOY TAPERED STANCHIONS



#### MARATHON S

- 105MM OR 120MM TRAVEL
- ETA EXTENSION TRAVEL ADJUSTMENT
- OPEN BATH HSCV CARTRIDGE
- DUAL COIL SPRINGS
- MG MARATHON MONOLITE ONE PIECE ARCH & SLIDERS
- EXTERNAL AIR PRELOAD
- EXTERNAL REBOUND ADJUSTER
- 30MM ALLOY TAPERED STANCHIONS



LESLEY TOMLINSON



# marzocchi

BUILT SUPERIOR [WWW.MARZOCCHI.COM](http://WWW.MARZOCCHI.COM)

## SERIES MX

DEVELOPED AND ENGINEERED  
IN THE MARZOCCHI FACTORIES IN BOLOGNA, ITALY

THE MX SERIES BLAZES UP THE TRAILS BY DELIVERING LIGHTWEIGHT & DURABLE PERFORMANCE IN A WIDE RANGE OF TRAIL CONDITIONS. THE MX SERIES FITS THE NAME BECAUSE THESE FORKS ARE GEARED FOR MAXIMUM TRAIL VERSATILITY DELIVERING PREDICTABLE STEERING CONTROL AND SUPERB DAMPING QUALITY UNDER ANY CONDITIONS. THIS FORK IS PERFECT FOR THOSE WHO DESIRE AGGRESSIVE XC STYLE DAMPING WHILE RETAINING A FEATHER WEIGHT FEEL.



MG MARATHON MONOLITE  
ONE PIECE ARCH & SLIDERS

BOMBARDIER

### MX COMP

- 85 MM OR 100 MM TRAVEL
- OPEN BATH SSV DAMPING
- DUAL COIL SPRINGS
- MG MARATHON MONOLITE ONE PIECE ARCH & SLIDERS
- EXTERNAL AIR PRELOAD
- INTERNAL REBOUND ADJUSTER
- 30 MM ALLOY STANCHIONS

### MX COMP with ETA

- 105 MM OR 120 MM TRAVEL
- 1-SIDE: ETA COIL
- 1-SIDE: AIR
- OPEN BATH SSV DAMPING
- MG MARATHON MONOLITE ONE PIECE ARCH & SLIDERS
- EXTERNAL AIR PRELOAD
- INTERNAL REBOUND ADJUSTER
- 30 MM ALLOY STANCHIONS
- 1" STEER TUBE VERSION AVAILABLE





#### **MX PRO with ETA**

- 105 MM OR 120 MM TRAVEL
- 1-SIDE: ETA COIL
- 1-SIDE: AIR
- OPEN BATH SSVF DAMPING
- MG MARATHON MONOLITE  
ONE PIECE ARCH & SLIDERS
- EXTERNAL AIR PRELOAD
- EXTERNAL REBOUND ADJUSTER
- 30 MM ALLOY STANCHIONS



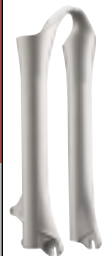
**PAUL CURTIN**

PROFESSIONAL RIDER ON CLOSED COURSE

**marzocchi**  
BUILT SUPERIOR [WWW.MARZOCCHI.COM](http://WWW.MARZOCCHI.COM)

## SERIES Z150

DEVELOPED AND ENGINEERED  
IN THE MARZOCCHI FACTORIES IN BOLOGNA, ITALY



MG FR MONOLITE  
ONE PIECE ARCH & SLIDERS

THE Z150 FR IS THE ONLY SINGLE CROWN FREERIDE FORK TO OFFER "WORKS" STYLE NITRITE COATED STEEL STANCHIONS DELIVERING BUTTERY SMOOTH PERFORMANCE ALONG WITH AMAZING ROCK SHREDDING HARDNESS. OUR LIST OF THE BEST FREERIDERS IN THE WORLD (WADE SIMMONS, RICHIE SCHLEY, THOMAS VANDERHAM, MATT HUNTER, GARETH DYER, DAVE WATSON AND MIKE KINRAID, JUST TO NAME A FEW) ALL AGREE, THE Z150 IS THE BEST PERFORMING SINGLE CROWN FORK THEY'VE EVER RIDDEN.



**Bomber**

**RICHIE SCHLEY**





#### Z150 FR

- 150 MM TRAVEL
- ETA EXTENSION TRAVEL ADJUSTMENT
- OPEN BATH HSCV CARTRIDGE
- DUAL COIL SPRINGS
- MG FR MONOLITE
- ONE PIECE ARCH & SLIDERS
- FORGED FR CROWN W/ CRYOFIT "M" DESIGN
- EXTERNAL AIR PRELOAD
- EXTERNAL REBOUND ADJUSTER
- 32 MM NITRITE COATED STEEL STANCHIONS
- 20 MM QR20 PRO DROP-OUTS

#### Z150 FR SL

- 150 MM TRAVEL
- OPEN BATH DOPPIO AIR CARTRIDGE
- ECC<sup>5</sup> 5-POSITION EXTENSION CONTROL CARTRIDGE
- EXTERNAL POSITIVE & NEGATIVE AIR
- MG FR MONOLITE
- ONE PIECE ARCH & SLIDERS
- FORGED FR CROWN W/ CRYOFIT "M" DESIGN
- 32 MM ALLOY STANCHIONS
- 20 MM QR20 PRO DROP-OUTS



DAVE WATSON

PROFESSIONAL RIDER ON CLOSED COURSE

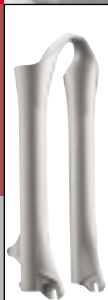
# marzocchi

BUILT SUPERIOR WWW.MARZOCCHI.COM

## SERIES FREERIDE

DEVELOPED AND ENGINEERED  
IN THE MARZOCCHI FACTORIES IN BOLOGNA, ITALY

THE Z.1 FREERIDE SERIES REPRESENTS THE PINNACLE IN LONG TRAVEL SINGLE CROWN DESIGN. THE FIRST Z.1, INTRODUCED IN 1996, STARTED THE FREERIDE MOVEMENT BY ALLOWING RIDERS TO PERFORM BEYOND THEIR PREVIOUS CAPABILITIES WHICH WERE HAMPERED BY POORLY PERFORMING PRODUCTS. THE NEW Z.1 IS MADE FOR RIDERS WHO STILL LOVE THE UP HILL CLIMBS AS MUCH AS THE DOWNHILL'S AND ALL-AROUND RIDING PERFORMANCE IS THE DIFFERENCE BETWEEN A GOOD RIDE AND A GREAT ONE. WE FEEL THAT THE NEW Z.1 FREERIDE SERIES UNLEASHES PERFORMANCE DEMANDED BY TODAY'S CUTTING EDGE RIDERS.



MG FR MONOLITE  
ONE PIECE ARCH & SLIDERS

**Bomber**



### Z.1 FR SL

- 130 MM TRAVEL
- OPEN BATH DOPPIO AIR CARTRIDGE
- ECC<sup>5</sup> 5-POSITION EXTENSION CONTROL CARTRIDGE
- EXTERNAL POSITIVE & NEGATIVE AIR
- MG FR MONOLITE
- ONE PIECE ARCH & SLIDERS
- FORGED FR CROWN W/ CRYOFIT "M" DESIGN
- 32 MM ALLOY STANCHIONS



### Z.1 FR & QR20 Pro

- 130 MM TRAVEL
- ETA EXTENSION TRAVEL ADJUSTMENT
- OPEN BATH HSCV CARTRIDGE
- DUAL COIL SPRINGS
- MG FR MONOLITE
- ONE PIECE ARCH & SLIDERS
- FORGED FR CROWN W/ CRYOFIT "M" DESIGN
- EXTERNAL AIR PRELOAD
- EXTERNAL REBOUND ADJUSTER
- 32 MM ALLOY STANCHIONS
- STANDARD OR 20 MM QR20 PRO DROP-OUTS



#### Z.1 DROP-OFF<sup>®</sup> I

- 130MM TRAVEL
- ETA EXTENSION TRAVEL ADJUSTMENT
- OPEN BATH SSVF DAMPING
- DUAL COIL SPRINGS
- MG FR MONOLITE
- ONE PIECE ARCH & SLIDERS
- FORGED FR CROWN W/ CRYOFIT "M" DESIGN
- EXTERNAL AIR PRELOAD
- EXTERNAL REBOUND ADJUSTER
- 32MM ALLOY STANCHIONS

#### Z.1 DROP-OFF<sup>®</sup> II

- 130MM TRAVEL
- OPEN BATH SSV DAMPING
- DUAL COIL SPRINGS
- MG FR MONOLITE
- ONE PIECE ARCH & SLIDERS
- FORGED FR CROWN W/ CRYOFIT "M" DESIGN
- EXTERNAL AIR PRELOAD
- INTERNAL REBOUND ADJUSTER
- 32MM ALLOY STANCHIONS

#### Z.1 Wedge

- 130MM TRAVEL
- DUAL SSV DAMPING
- DUAL COIL SPRINGS
- ALUMINUM ARCH AND BAM
- ALUMINUM SLIDERS
- SUPERLIGHT FORGED FR CROWN W/CRYOFIT "M" DESIGN
- EXTERNAL AIR PRELOAD
- 30MM ALLOY STANCHIONS

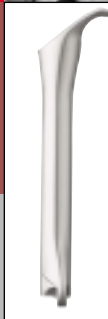


**marzocchi**  
BUILT SUPERIOR WWW.MARZOCCHI.COM

## SERIES DIRTJUMPER

DEVELOPED AND ENGINEERED  
IN THE MARZOCCHI FACTORIES IN BOLOGNA, ITALY

DIRT JUMPER MODELS I, II, AND III  
ALL UTILIZE OUR ONE-PIECE  
MAGNESIUM CASTING ALONG WITH  
THE FENDER STYLE FORGED CNC  
CROWN AND WITH THE LARGER  
32MM ALLOY STANCHION TUBES. AS  
WITH THE Z.1 SERIES, THE DJ SERIES  
OFFER HARD-CORE FREERIDERS AND  
DIRT JUMPERS MARZOCCHI'S  
CONTINUED COMMITMENT TO THE  
EVOLUTION OF STREET.



Mg FR MONOLITE  
ONE PIECE ARCH & SLIDERS

**Bomber**



### DIRT JUMPER I

- 110MM TRAVEL
- 130MM KIT AVAILABLE
- OPEN BATH SSV DAMPING
- DUAL COIL SPRINGS
- MG FR MONOLITE  
ONE PIECE ARCH & SLIDERS
- FORGED FR CROWN W/  
CRYOFIT "M" DESIGN
- SINGLE EXTERNAL REBOUND  
ADJUSTMENT
- EXTERNAL AIR PRELOAD
- 32MM STEEL STANCHIONS
- 20MM QR20 PRO DROP-OUTS

### DIRT JUMPER II

- 110MM TRAVEL
- 130MM KIT AVAILABLE
- OPEN BATH SSV DAMPING
- DUAL COIL SPRINGS
- MG FR MONOLITE  
ONE PIECE ARCH & SLIDERS
- FORGED FR CROWN W/  
CRYOFIT "M" DESIGN
- SSV INTERNAL REBOUND
- EXTERNAL AIR PRELOAD
- 32MM STEEL STANCHIONS
- STANDARD OR QR20 PRO  
DROP-OUTS





#### DIRT JUMPER III

- 110MM TRAVEL
- 130MM KIT AVAILABLE
- OPEN BATH SSV DAMPING
- DUAL COIL SPRINGS
- MG FR MONOLITE
- ONE PIECE ARCH & SLIDERS
- FORGED FR CROWN W/  
CRYOFIT "M" DESIGN
- EXTERNAL AIR PRELOAD
- 32MM STEEL STANCHIONS



**GARETH** OVER

PROFESSIONAL RIDER ON CLOSED COURSE



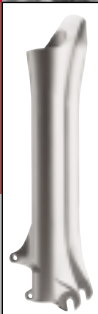
# marzocchi

BUILT SUPERIOR [WWW.MARZOCCHI.COM](http://WWW.MARZOCCHI.COM)

## SERIES DOWNHILL

DEVELOPED AND ENGINEERED  
IN THE MARZOCCHI FACTORIES IN BOLOGNA, ITALY

THE JUNIOR T AND SUPER T MODELS SATISFY THE DEMAND FOR LIGHTER WEIGHT LONG TRAVEL SUSPENSION THAT CAN STILL HANDLE THE BIG HITS. BOTH MODELS HAVE 7" OF STICTION-FREE TRAVEL. AS WITH ALL OUR 32MM FORKS, THEY CAN ACCOMMODATE UP TO A 2.7 TIRE FOR 2004. OTHER IMPROVEMENTS INCLUDE ADJUSTABLE LOWER CROWN, REVISED DROP-OUTS AND REDUCED WEIGHT.



MG FR MONOLITE  
ONE PIECE ARCH & SLIDERS



**Bomber**

BYRON GREY



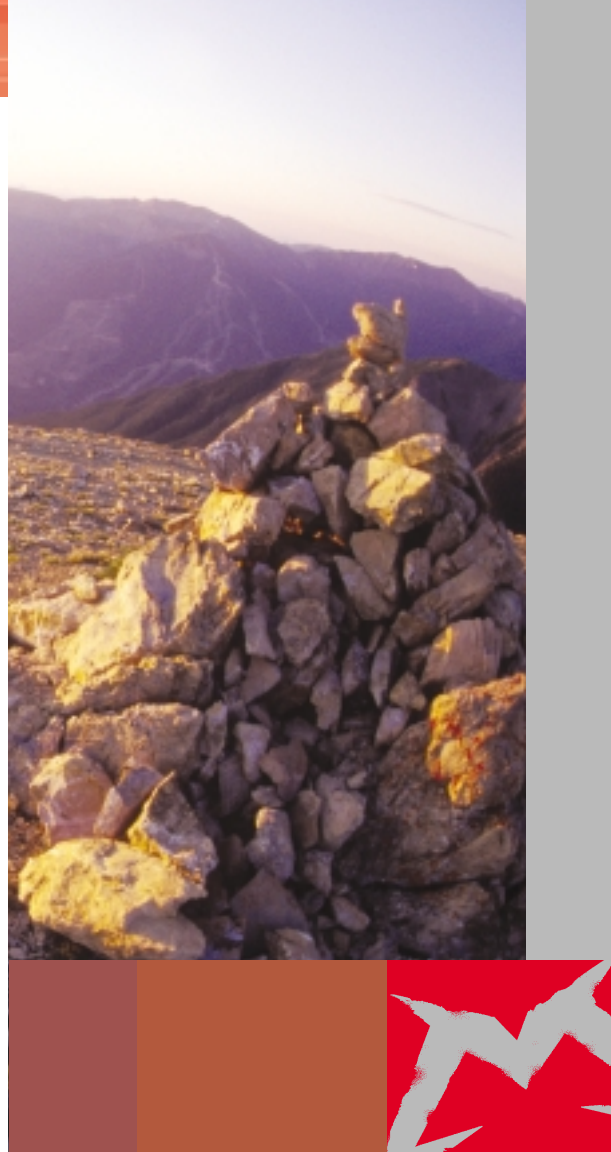
#### JUNIOR T

- 170MM TRAVEL
- OPEN BATH SSVF DAMPING
- DUAL COIL SPRINGS
- MG FR MONOLITE
- ONE PIECE ARCH & SLIDERS
- FORGED FR CROWNS W/ ADJUSTABLE "M" DESIGN
- EXTERNAL PRELOAD
- INTERNAL REBOUND
- 32MM ALLOY STANCHIONS
- STANDARD DROP-OUTS
- DIRECT MOUNT HANDLEBAR CLAMP AVAILABLE



#### SUPER T PRO

- 170MM TRAVEL
- 1-SIDE: OPEN BATH HSCV CARTRIDGE
- 1-SIDE: OPEN BATH SSV DAMPING
- DUAL COIL SPRINGS
- MG FR MONOLITE
- ONE PIECE ARCH & SLIDERS
- FORGED FR CROWNS W/ ADJUSTABLE "M" DESIGN
- EXTERNAL PRELOAD
- EXTERNAL REBOUND ADJUSTER
- 32MM ALLOY STANCHIONS
- 20MM QR20 PRO DROP-OUTS
- DIRECT MOUNT HANDLEBAR CLAMP AVAILABLE



**marzocchi**  
BUILT SUPERIOR [WWW.MARZOCCHI.COM](http://WWW.MARZOCCHI.COM)

## SERIES 888

DEVELOPED AND ENGINEERED  
IN THE MARZOCCHI FACTORIES IN BOLOGNA, ITALY

THE NEWLY DEVELOPED 888R AND 888RT WHAT IF YOU CLOSED YOUR EYES AND THOUGHT OF A FORK THAT POSSESSED ALL THE NEEDS, WANTS, AND DESIRES OF TODAY'S EXTREME RIDERS? WHAT WOULD APPEAR IN THE DEEPEST, DARKEST CORNERS OF YOUR MIND? WE CLOSED OUR EYES AND THEN DEVELOPED THE ALL-NEW AND RADICALLY DARK... TRIPLE 8 DUAL CROWN... FOR THOSE WHO TRULY WANT THEIR DARKEST DESIRES FULFILLED.



20 MM DEDICATED AXLE



**Bomber**





## 888R

- 200MM TRAVEL
- 170MM KIT AVAILABLE
- OPEN BATH HSCV CARTRIDGE WITH MULTI-STAGE DAMPING CIRCUITS
- EXTERNAL ADJUSTABLE COMPRESSION AND REBOUND CLICKERS
- DUAL COIL SPRINGS
- MOTO-STYLE CLIP TYPE SPRING PRELOAD ADJUSTABILITY
- MG XFR MONOLITE ONE PIECE ARCH & SLIDER FITS 3.0 TIRES
- 35MM ALLOY STANCHIONS
- 20MM DEDICATED AXLE
- DIRECT MOUNT HANDLEBAR CLAMP AVAILABLE



THOMAS VANDERHAM

PROFESSIONAL RIDER ON CLOSED COURSE



**marzocchi**  
BUILT SUPERIOR [WWW.MARZOCCHI.COM](http://WWW.MARZOCCHI.COM)

## SERIES SHIVER

DEVELOPED AND ENGINEERED  
IN THE MARZOCCHI FACTORIES IN BOLOGNA, ITALY

THE SHIVER LINE OF FORKS GIVES YOU UNSURPASSED LATERAL STIFFNESS ALL THE WHILE OFFERING UP THE UNMATCHED SMOOTHNESS OF AN INVERTED DESIGN. IT'S NO WONDER WORKS MOTOCROSS AND ROAD RACE SUSPENSION FORKS ARE INVERTED IN DESIGN. MARZOCCHI BRINGS THIS TECHNOLOGY TO THE MOUNTAIN BIKE. BY INVERTING THE STANCHIONS AND MOVING THE MAJORITY OF THE FORK'S WEIGHT TO THE LEGS, THE SHIVER SERIES REDUCES UNSPRUNG WEIGHT RESULTING IN BUMP AND STEERING SENSITIVITY THAT IS SECOND TO NONE.



**SHIVER**



**Shiver SC**

- 100MM TRAVEL
- DUAL OPEN BATH HSCV CARTRIDGE
- DUAL COIL SPRINGS
- CNC ALLOY OUTER TUBES
- FORGED CNC CROWN W/ CRYOFIT "M" DESIGN
- EXTERNAL PRELOAD
- DUAL EXTERNAL REBOUND ADJUSTER
- 30MM ALLOY STANCHIONS
- 20MM DROP-OUTS



**Shiver DC**

- 190MM TRAVEL
- DUAL OPEN BATH HSCV CARTRIDGE
- DUAL COIL SPRINGS
- EXTERNAL PRELOAD
- DUAL EXTERNAL REBOUND ADJUSTER
- CNC ALLOY TOP AND LOWER CROWNS
- CNC ALLOY OUTER TUBES, DROP OUT CNC ALLOY
- 35MM ALLOY STANCHIONS
- 20MM DROP-OUTS



**TYLER KLASSEN**

PROFESSIONAL RIDER ON CLOSED COURSE



**marzocchi**  
BUILT SUPERIOR [WWW.MARZOCCHI.COM](http://WWW.MARZOCCHI.COM)

## SERIES MONSTER

DEVELOPED AND ENGINEERED  
IN THE MARZOCCHI FACTORIES IN BOLOGNA, ITALY

MONSTERS CAN BEST BE DESCRIBED  
IN A SINGLE WORD "MONSTROUS"!  
WHEN IT'S TIME TO GO BIGGER  
THAN YOUR INSURANCE DEDUCTIBLE  
ALLOWS, IT'S TIME TO TAKE A  
MONSTER FOR A RIDE.



20 MM DEDICATED AXLE



**Bomber**





#### MONSTER T

- 200MM TRAVEL
- OPEN BATH Ø26MM SHIVER MOTOCROSS CARTRIDGES
- DUAL COIL SPRINGS
- FORGED ALUMINUM ALLOY ARCH & SLIDERS
- EXTERNAL REBOUND ADJUSTER
- EXTERNAL HIGH AND LOW SPEED COMPRESSION ADJUSTERS
- 40MM ALLOY STANCHIONS
- 20MM DEDICATED AXLE
- DIRECT MOUNT HANDLEBAR CLAMP AVAILABLE



#### SUPER MONSTER

- 300MM TRAVEL
- OPEN BATH Ø26MM SHIVER MOTOCROSS CARTRIDGES
- DUAL COIL SPRINGS
- FORGED ALUMINUM ALLOY ARCH & SLIDERS
- EXTERNAL REBOUND ADJUSTER
- EXTERNAL HIGH AND LOW SPEED COMPRESSION ADJUSTERS
- 40MM ALLOY STANCHIONS
- 20MM DEDICATED AXLE
- DIRECT MOUNT HANDLEBAR CLAMP AVAILABLE



**JOSH SENDER**

PROFESSIONAL RIDER ON CLOSED COURSE



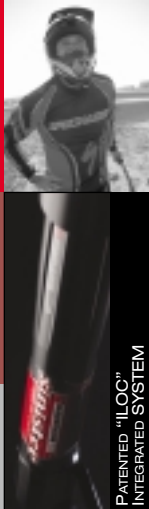
# marzocchi

BUILT SUPERIOR [WWW.MARZOCCHI.COM](http://WWW.MARZOCCHI.COM)

## SERIES BMX

DEVELOPED AND ENGINEERED  
IN THE MARZOCCHI FACTORIES IN BOLOGNA, ITALY

BMX HAS PROVEN TO BE THE CATALYST TO ALL THE PAST AND CURRENT GREAT MOUNTAIN BIKERS THAT ARE DOMINATING THE CIRCUIT TODAY. WITH THIS IN MIND MARZOCCHI SET OUT TO DOMINATE THE BMX MARKET WITH OUR PATENTED ALUMINUM BMX RACING FORK. MARZOCCHI'S COMMITMENT TO BMX RACING IS EVIDENT BY THE COMPLETE AUTHORITY OF THE ELITE AA PRO BMX RACING WORLDWIDE. CHRISTOPHE LEVEQUE, THOMAS ALLIER, ROBERT DE WILDE, DANNY NELSON, JOHN PURSE, KYLE BENNETT, GREG ROMERO. THAT AMOUNTS TO A COMPLETE ELITE AA PRO MAIN EVENT... YEAH WE KNOW DOMINATION!



PATENTED "ILOC"  
INTEGRATED SYSTEM



*sinister*

### MINI/JR 20/24

- 6061/T6 ALUMINUM, PATENTED "ILOC" INTEGRATED LEG AND CROWN SYSTEM
- EXTRUDED LEG INTEGRATES THE DROP-OUT INTO A ONE-PIECE DESIGN
- CNC MACHINED 7075-STEER TUBE
- WEIGHT-20"/17 OZ., 24"/19 OZ.
- RIDER WEIGHT LIMIT - 100 LBS.



### EXPERT 20/24

- 6061 / T6 ALUMINUM, PATENTED "ILOC" INTEGRATED LEG AND CROWN SYSTEM
- EXTRUDED LEG INTEGRATES THE DROP-OUT INTO A ONE-PIECE DESIGN
- VARI-WALL 7075 STEER TUBE
- FORK WEIGHT-20"/24 OZ., 24"/26 OZ.
- RIDER WEIGHT LIMIT - 145 LBS.



**PRO 20/24**

- 6061 / T6 ALUMINUM, PATENTED "ILOC" INTEGRATED LEG AND CROWN SYSTEM
- EXTRUDED LEG INTEGRATES THE DROP-OUT INTO A ONE-PIECE DESIGN.
- VARI-WALL 7075 PRO RIDE STEER TUBE
- FORK WEIGHT-20"/32 OZ., 24"/34 OZ.
- RIDER WEIGHT LIMIT - NONE



**BMX DJ**

- 4130 CHROMOLY
- 14MM AND 3/8" AXLE
- ONE PIECE 4130 CHROMOLY STEER TUBE
- INTEGRATED INTERNAL HEADSET BOLT



**BRANDON MEADOWS**

PROFESSIONAL RIDER ON CLOSED COURSE



Marzocchi S.p.A. Via Grazia, 2 40069 Zola Predosa (Bologna) ITALY · (t) ++39 051 6168711 · (f) ++39 051 758857