





From design to production, from the factory floor to your favorite road or trail, Maxxis products lead the way in performance and durability. For bicycle, automotive, light truck, ATV, motorcycle, kart, trailer and lawn & garden, Maxxis provides the quality customers have come to depend on.

More than 20,000 people around the world are part of the Maxxis team, offering premium tire products to consumers in 150 countries. Maxxis has operations in Canada, China, Dubai, Germany, Japan, the Netherlands, Taiwan, Thailand, the United Kingdom and the United States. In North America, Maxxis is headquartered in Suwanee, Georgia, with other US facilities in California, Michigan and Texas.

For more information on the entire Maxxis product line and factory gear please visit us at Maxxis.com.

CONTENTS

TECHNOLOGY

COMPOUNDS 04

DEFINITIONS 05

ROAD RACING

CORMET 08

COURCHEVEL 08

XENITH EQUIPE LÉGERE 09

XENITH HORS CATÉGORIE 09

COLUMBIERE 09

ROAD TRAINING

RE-FUSE 11

DETONATOR 11

HYBRID

DETONATOR 13

XENITH 1.5 13

OVERDRIVE 14

CYCLOCROSS

RAZE 16

LOCUST 16

MIMO CX 17

MOUNTAIN

MAXXLITE 310 20

ORIFLAMME 20

ARDENT 22

MONORAIL 22

RIDGELINE 22

CROSSMARK 23

HIGH ROLLER SEMI-SLICK 23

MEDUSA 24

HIGH ROLLER 24

ADVANTAGE 24

IGNITOR 25

MINION DHR 27

MINION DHF 27

LARSEN TT 27

URBAN

HOLY ROLLER 29

HOOKWORM 29

DOWNHILL

ARDENT 32

HIGH ROLLER 32

MINION DHR 33

MINION DHF 33

SWAMPTHING 34

WETSCREAM 34

BMX

DTH 39

GRIFTER 39

MAXXDADDY 39

HOLY ROLLER 41

RINGWORM 41

HOOKWORM 41

M-TREAD 42

MIRACLE 42

TRIALS

CREEPY CRAWLER 43

TUBES

FLYWEIGHT 44

ULTRALIGHT 44

WELTER WEIGHT 44

FREERIDE 45

DOWNHILL 45

FACTORY GEAR

SPECIALTY ITEMS 46

APPAREL 47

Maxxis makes every effort to ensure the accuracy of information we publish. Maxxis is not responsible for errors or misprints in our materials. Prices, specifications and item availability are subject to change without notice. Actual weights and measurements may vary from those published herein. Weights are listed in grams.

©2008 Maxxis International. All Rights Reserved.



PHOTO: WARRICK

LEADING EDGE TECHNOLOGY

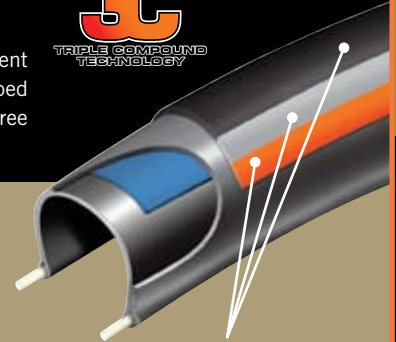
Technology is the lifeblood of Maxxis' competitive advantage. Professional racers know a tire's performance depends on far more than what can be seen. Take a moment to peruse the technology that makes Maxxis better, and understand why champions choose **Maxxis**.

3C TRIPLE COMPOUND - ROAD

3C Road – Triple Compound Technology, invented for our Road Racing line

Maxxis is proud to be the first bicycle tire manufacturer to use Triple Compound Technology: three different compounds in the tread of a single tire. Partnering with silica manufacturer Degussa, Maxxis has developed these compounds to optimize grip in tight corners at severe lean angles and offer great tread life. With the three compounds' placement optimized, you won't feel the transitions – just the grip.

- HIGH DISPERSION SILICA CENTER TREAD FOR LONG LIFE AND LOW ROLLING RESISTANCE
- TWO PROGRESSIVELY SOFTER SILICA-BASED COMPOUNDS PROVIDE INCREASED GRIP IN TIGHT CORNERS
- PRECISE PLACEMENT OF THE THREE COMPOUNDS MAXIMIZES TRANSITION GRIP AT DIFFERENT LEAN ANGLES
- IMPROVED WET TRACTION OVER CURRENT ROAD RACING TIRES



Three distinct silica-based compounds of varying hardness (50a, 58a, 62a)

LUST

Lightweight Ultimate Sidewall Technology

Maxxis Mountain Tubeless tires, certified to UST® standards, now feature Lightweight Ultimate Sidewall Technology (LUST). LUST offers better puncture resistance, improved air retention, better longevity and lower weight than previous tubeless technologies. Our engineers were not content with simply having one of the best tubeless tires on the market. Instead, they went back to the drawing board, reinvented the tubeless tire from the casing and tread and addressed your concerns about tubeless technology. By adding a thin fabric layer to the sidewall covered in a special air-tight rubber compound, Maxxis created a casing that is lighter, tougher and holds air better. Now, it's available to you on all of our Cross Country and Freeride Tubeless tires.

- 15% LIGHTER THAN OUR PREVIOUS TUBELESS TIRES
- BETTER AIR RETENTION THAN COMPETITORS' TIRES
- INCREASED SIDEWALL PUNCTURE RESISTANCE

LUST



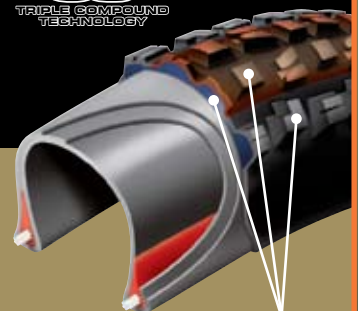
LUST

3C TRIPLE COMPOUND - DOWNHILL

3C DH – Triple Compound Technology, invented for our DH Racing line

Maxxis has revolutionized the DH racing scene again. By combining the best properties of our most popular rubber compounds, we've created a tire that brakes and corners better than previously thought possible, while offering tread life approaching that of our harder compound tires. True to our focus on delivering the best possible technology to all riders, Maxxis isn't hoarding this breakthrough for professional racers: we're also offering it to you in your favorite tread patterns.

- HARDER (70A) BASE LAYER SUPPORTS KNOBS SO THEY DON'T SQUIRM OR FOLD UNDER IMMENSE CORNERING, BRAKING AND LANDING FORCES
- SUPER TACKY (42A) CENTER LUGS FOR AWESOME BRAKING
- SLOW REEZAAY (40A) SIDE LUGS FOR STABLE CORNERING WITHOUT REBOUND-INDUCED BOUNCE

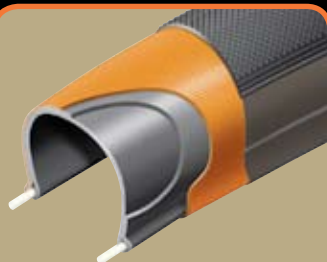


Three distinct silica-based compounds of different varying hardness (70a, 42a, 40a)

In addition to the cutting-edge technology only Maxxis can offer, many other factors can affect the performance of a tire. To help you choose the perfect tire for your ride, below you'll see a list of the various technologies available in our tire lines along with definitions.

	ROAD, CYCLOCROSS & HYBRID	MOUNTAIN	DOWNHILL	BMX
THREADS PER INCH (TPI)	27, 60, 120, 170	60 120 (EXCEPTION SERIES)	27 (TUBELESS ONLY) 60	60, 120
CASING REINFORCEMENT	KEVLAR BELT SILKWORM CAP PLY NYLON BREAKER	SILKWORM (EXCEPTION SERIES & TUBELESS)	BUTYL INSERT	N/A
RUBBER COMPOUNDS	50a, 57a, 58a (ROAD) 70a, 62a (CX) 70a, 62a, 57a (HYBRID)	70a 60a (MAXXPRO) 62a (EXCEPTION SERIES) 42a (SUPER TACKY)	60a (MAXXPRO) 42a (SUPER TACKY)	70a 62a/60a
BEAD	WIRE OR FOLDABLE	WIRE OR FOLDABLE	WIRE OR FOLDABLE (TUBELESS ONLY)	WIRE OR FOLDABLE
PLY	SINGLE	SINGLE	DUAL	SINGLE

DEFINITIONS



SILKWORM CAP PLY

Silkworm Technology is an exclusive material incorporated into the casing of select Maxxis tires. The Silkworm material helps to increase puncture and tear resistance, while at the same time increasing rotation efficiency. This helps keep you in the saddle and on the move.



KEVLAR® COMPOSITE

New for '09 is the revolutionary Kevlar Composite breaker. Available in select tires, this Maxxis exclusive fabric provides more puncture protection than both standard Kevlar and Vectran. The addition of this lightweight and supple material ensures that the ride quality and performance remains unsurpassed.

THREADS PER INCH (TPI)

The number of nylon threads that cross through one square inch of the tire's casing. Only one ply of a dual ply casing is counted. Lower TPI gives better puncture and tear resistance, but is heavier. Higher TPI conforms more to the terrain, offering a smoother, more supple ride. It is also lighter weight.

KEVLAR® BELT

Made from material used for bullet-proof vests, a Kevlar® belt provides maximum puncture protection in the most unpredictable conditions. Unlike belts which merely disperse Kevlar among other materials, the Maxxis Kevlar belt contains only this state-of-the-art fabric. The specially formulated Kevlar belt is positioned between the tread and casing layer.

SINGLE PLY

One layer of nylon holds it all together. Wrapped from bead to bead, a single ply conforms well to the terrain and is lighter weight.

DUAL PLY

The nylon of the casing is folded over to provide two layers of protection. True, it's heavier, but in Downhill applications the extra puncture resistance is essential.

RUBBER COMPOUNDS

The most obvious and arguably most important part of a tire is the tread compound. By changing the amounts of various components of the rubber compound formulation, engineers can make two tires that look identical but perform differently. Below are some distinct characteristics of some of our most popular compounds.

70a

- Long Tread Life
- Low Rolling Resistance

62a EXCEPTION

- Great Traction
- Low Rolling Resistance

60a MAXXPRO

- Great Traction
- Minimal Impact on Tread Life

42a SUPER TACKY

- Awesome Grip
- Stable Knobs Prevent Squirm on Hard Pack



BUTYL INSERT

An extra layer of butyl rubber wrapped around the bead of a Downhill tire that helps prevent pinch flats and protects the rim from hard hits.



NYLON BREAKER

The nylon breaker is a reinforcement option that offers protection from punctures directly under the tread area. It also helps increase rolling efficiency by providing support to prevent the tread from flexing. The nylon breaker is available in select road tires.

BEAD

The area of the tire that contacts the rim, keeping the tire in place and rotating with the rim.

WIRE BEAD

A sturdy material is needed to hold the tire against the rim when it is inflated. Wire is used to ensure the bead will not expand, but wire is also heavy.

FOLDABLE BEAD

Foldable beads also stay tight to the rim but are lighter weight and easier to transport.

From the local group rides to the Tour of California, Maxxis tires will give you the fast-rolling, dependable performance needed to stay in the lead group. We offer road tires for every different riding condition to keep you rolling in the front pack or on the long quiet training roads. If you are ready to take your riding to the next level, depend on the same tires that pro teams Health Net presented by Maxxis and Jittery Joe's ride everyday.



PHOTO: WARRICK



PHOTO: KREUTZ



PHOTO: JAMBRETZ

MAXXIS IN THE PELOTON

TEAM HEALTH NET



Health Net presented by Maxxis is the most **dominant team on the North American road race circuit**. The 4x NRC Champions are a threat to sweep the podium on any given race day. They bring a well-rounded roster complete with all-around stage racers, **sprinters, climbers and time-trialists**. Health Net/Maxxis' success in the USA has spilled over into other venues as they have seen success on the International scene as well.

3C TRIPLE COMPOUND - ROAD

3C ROAD – TRIPLE COMPOUND TECHNOLOGY, INVENTED FOR OUR ROAD RACING LINE

At the cutting edge of tire technology, Maxxis is proud to introduce the Courchevel. Reinvented from the rubber to the casing, Courchevel premier Maxxis' Triple Compound Technology featuring Degussa Silica. The Courchevel also incorporates DuPont Kevlar® belt technology for superlative puncture resistance — while at the same time decreasing its weight.

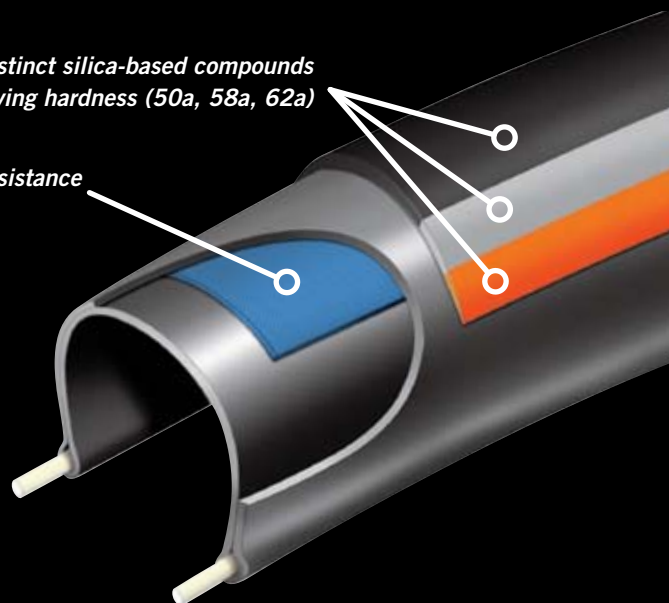


TRIPLE COMPOUND
TECHNOLOGY

- HIGH DISPERSION SILICA CENTER TREAD FOR LONG LIFE AND LOW ROLLING RESISTANCE
- TWO PROGRESSIVELY SOFTER SILICA-BASED COMPOUNDS PROVIDE INCREASED GRIP IN TIGHT CORNERS
- PRECISE PLACEMENT OF THE THREE COMPOUNDS MAXIMIZES TRANSITION GRIP AT DIFFERENT LEAN ANGLES
- IMPROVED WET TRACTION OVER CURRENT ROAD RACING TIRES

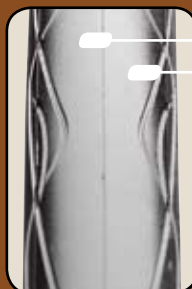
Three distinct silica-based compounds
of different varying hardness (50a, 58a, 62a)

Kevlar® Belt provides puncture resistance





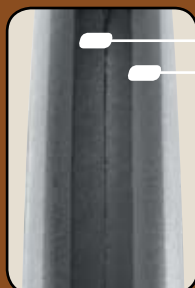
SIZE	PART #	DUROMETER	TPI	BEAD	MAX PSI	WEIGHT	MSRP
700x23c	TB86331200	62	170	Foldable	130	215	\$72.00



- ONE70 TECHNOLOGY
- PRO ROAD COMPETITION TIRE
- 2-PLY NYLON BREAKER FOR INCREASED PUNCTURE RESISTANCE

Stepping it up a notch-and-a-half, Maxxis introduces the Cormet with ONE70 Technology. ONE70 utilizes special high thread count fabric in the casing, reducing rolling resistance even further than our other racing tires. ONE70 Technology also provides better road feel and weight savings over other racing tires. From the most aggressive crit to the most epic climb, the new Maxxis Cormet with ONE70 Technology is destined for racing greatness.

SIZE	COLOR	PART #	DUROMETER	TPI	BEAD	MAX PSI	WEIGHT	MSRP
700x23c	ORG/GRY/BLK	TB86345200	62/58/50	120	Foldable	130	205	\$72.00
700x23c	GRY/BLK	TB86345300	62/58/50	120	Foldable	130	205	\$72.00



- TRIPLE COMPOUND TECHNOLOGY
- KEVLAR® BELT FOR INCREASED PUNCTURE RESISTANCE
- PRO ROAD COMPETITION TIRE
- AVAILABLE IN ORANGE/GRAY/BLACK OR GRAY/GRAY/BLACK

Maxxis continues to push the boundaries of the Road Racing market. The Courchevel was reinvented from the rubber to the casing. Triple Compound Technology offers long wear life, great traction and better transition from compound to compound. Kevlar® belt technology provides puncture resistance.



JITTERY JOE'S

ROAD TIRE GUIDE	RACING	SPORT	TRAINING	URBAN/COMMUTE	PUNCTURE PROTECTION
MODEL					
Cormet					
Courchevel					
Xenith Equipe Légère					
Xenith Hors Catégorie					
Columbiere					
Re-Fuse					
Detonator					

Jittery Joe's is treated like the hometown favorite wherever their busy race schedule takes them. The team, based out of Athens, GA, has developed a fan following all across the country thanks to their strong marketing and winning ways. **The Bean Team**, as they are affectionately known to their followers, maintain the small, hometown feel despite seeing major success; like winning the Brasstown Bald stage of the Tour de Georgia against Lance Armstrong and the US Postal Team.



PHOTO: WARRICK

SIZE	PART #	DUROMETER	TPI	BEAD	MAX PSI	WEIGHT	MSRP
700x23c	TB86347000	62	120	Foldable	145	180	\$51.00



- EXTREMELY LIGHT WEIGHT
- PRO ROAD COMPETITION TIRE

When low weight and a supple ride are your priorities, the Xenith Equipe Légère is your tire. Where punctures are unlikely, choose the Xenith Equipe Légère for extreme acceleration.



XENITH EQUIPE LÉGERE



XENITH HORS CATÉGORIE

SIZE	PART #	DUROMETER	TPI	BEAD	MAX PSI	WEIGHT	MSRP
650x23c	TB51753000	57/62	120	Foldable	130	195	\$50.00
700x20c	TB86068500	57/62	120	Foldable	130	210	\$50.00
700x23c	TB86340900	57/62	120	Foldable	130	230	\$50.00



- PRO ROAD COMPETITION TIRE
- 2-PLY NYLON BREAKER FOR INCREASED PUNCTURE RESISTANCE

Like the Equipe Légère, the Hors Catégorie is a professional-level road racing tire with a 120 TPI casing, but adds a 2-ply nylon breaker for puncture resistance. The Hors Catégorie offers two different rubber hardnesses to optimize your ride. The harder 62a center has ultra-low rolling resistance and wears slowly, while the softer 57a side offers incredible grip in tight corners.

SIZE	PART #	DUROMETER	TPI	BEAD	MAX PSI	WEIGHT	MSRP
700x23c	TB86355000	62	120	Foldable	130	225	\$50.00



- GROOVED SLICK DESIGN
- 2-PLY NYLON BREAKER FOR INCREASED PUNCTURE RESISTANCE
- PRO ROAD COMPETITION TIRE

The Columbiere is designed for true road racing enthusiasts. The Columbiere's slick design with subtle siping allows racers to cover ground in any condition with plenty of confidence. Tire of choice for Health Net Pro Cycling Team Presented by Maxxis.



COLUMBIERE



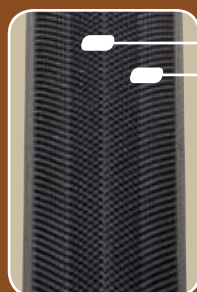
We believe Sprints are won in the off-season, so whether you're sprinting for the city limit sign on Main Street, or sprinting for the podium win on race day, Maxxis tires will get you there fast. Our training tires are tough like you and built to perform, whatever the weather throws your way. Prepare today for your victory tomorrow on Maxxis.

MAXXIS TRAINING TO WIN



PHOTO: O'TYSON

SIZE	PART #	DUROMETER	TPI	BEAD	MAX PSI	WEIGHT	MSRP
700x23c	TB86336000	62	60	Foldable	120	255	\$36.00
700x25c	TB86359000	62	60	Foldable	120	275	\$36.00



- DIAMOND-KNURLED SLICK DESIGN
- KEVLAR® BELT
- SILKWORM PROTECTION

Traditional diamond-knurled pattern provides excellent traction and durability for plenty of road miles in any condition. The Kevlar belt and silkworm cap ply combine to provide a tire that Re-Fuses to puncture.



RE-FUSE



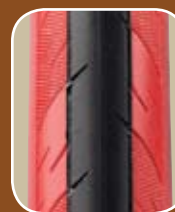
DETONATOR

SIZE	COLOR	PART #	DUROMETER	TPI	BEAD	MAX PSI	WEIGHT	MSRP
700x23c	BLUE	TB86353000	57/62	60	Foldable	120	235	\$36.00
700x23c	GREY	TB86352100	57/62	60	Foldable	120	235	\$36.00
700x23c	ORANGE	TB86352300	57/62	60	Foldable	120	235	\$36.00
700x23c	RED	TB86352000	57/62	60	Foldable	120	235	\$36.00
700x23c	YELLOW	TB86352200	57/62	60	Foldable	120	235	\$36.00
700x25c	BLUE	TB86367000	57/62	60	Foldable	120	245	\$36.00
700x25c	GREY	TB86367500	57/62	60	Foldable	120	245	\$36.00



- GROOVED SLICK DESIGN
- SILKWORM PROTECTION
- 5 COLORS AVAILABLE

With its dual compound tread pattern, the Maxxis Detonator provides a durable training tire with a race pedigree. Softer silica compound on the outer edges of the tire paired with the grooved slick tread design allows for great traction in a variety of road conditions. The Detonator is durable enough to provide plenty of winter miles, yet supple and grippy enough to race on in the summer.





If commuting to work through the city or going on a leisurely rural ride with the family is your cup of tea, then Maxxis has the perfect line of durable performance hybrid tires for you. By including technology like the Silkworm Protection and Kevlar Belts we have designed specific hybrid tires that will take the abuse any city road or fire road can dish out while providing a smooth ride to keep you comfortable in the saddle.

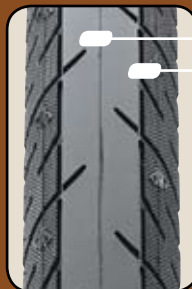


PHOTOS: KRAXBERGER

MAXXIS ON THE STREET

HYBRID

SIZE	PART #	DUROMETER	TPI	BEAD	MAX PSI	WEIGHT	MSRP
26x1.50	TB58908000	62	60	Foldable	65	485	\$35.00



- GROOVED SLICK DESIGN – FRONT OR REAR
- NARROW PROFILE FOR LOW WEIGHT
- SILKWORM PROTECTION

One of our most popular road training tires is now available for your 26" wheels. The Detonator is packed with advanced technology: a variety of compounds for great traction and long wear; Silkworm protection for puncture resistance; a foldable bead for light weight or a wire bead for durability. Great for road training when you only have one bike available - or for daily commuting.



DETONATOR



XENITH 1.5

SIZE	PART #	DUROMETER	TPI	BEAD	MAX PSI	WEIGHT	MSRP
26x1.50	TB58905100	70	60	Foldable	65	360	\$40.00



- SLICK DESIGN - FRONT OR REAR
- NARROW PROFILE FOR LOW WEIGHT
- MOUNTAIN BIKE SPECIFIC SLICK

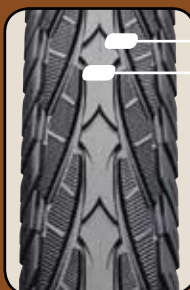
Even the pros can't always travel with two bikes, yet training on the road is one of the best ways to condition for an off-road race. Make your MTB perform double-duty with the Xenith 1.5. The narrow casing makes the Xenith extremely responsive, and the slick tread rolls fast while gripping any type of pavement.





OVERDRIVE

SIZE	PART #	DUROMETER	TPI	BEAD	MAX PSI	WEIGHT	MSRP
700x38c	TB95688700	70	60	Wire	75	565	\$31.00
26x1.75	TB64110700	70	60	Wire	50	580	\$31.00



- GROOVED SLICK DESIGN - FRONT OR REAR
- KEVLAR® BELT
- REFLECTIVE STRIPE

Created to meet the demands of the European trekking market, the Overdrive has a grooved slick design for all-weather application as well as Kevlar® belt technology to provide excellent protection from encounters with road debris.



Cyclocross is defined as leg-aching, heart-pounding, lung-bursting, lap-racing through the sloppiest tracks imaginable in freezing cold weather combined with consistent dismounting to leap over barriers and charge up hills. **If this type of suffering is your passion,** then Maxxis has created a line of tires that will propel you through the pack to the podium. We have cyclocross race tires designed for all conditions from wet to dry, dirt to pavement and everything in between.

MAXXIS IN THE ELEMENTS



PHOTO: WARRICK

What did you want to be as a kid? I thought I was going to be an inventor (seriously)
Who was your role model growing up? No role model growing up. Today? Still looking for one...
What one item could you not live without on the road? A good book.
Any pre-race superstitions? If the legs hurt when I wake up, the day is going to suck.
List hobbies outside of cycling: Snowboarding, reading, going to movies, spending time with friends, xc skiing.
What is the strangest thought that goes through your head while racing? I wonder what my friends are up to right now...
Who would portray you in a movie? Steve Buscemi.
Favorite TV show? Well, I thought season 1 of 24 was pretty good.
Biggest Weakness for a dessert? Chocolate.
Dream Car? BMW 330 xi wagon.
Your Best Pick Up Line? Doesn't really matter, as long as I throw in the French accent.
Is your accent real or fake? Mostly it's fake, I use it because women like it.
How often do women approach you for leg shaving advice? I try to avoid that as much as I can.
My friends would say I am... Tall and skinny.
What reality TV show would you pick to star in and why? The Amazing Race looks like it could actually be fun.
What is your trick for deflecting the advances of podium girls? Who said anything about deflecting?
Describe your best memory with the team. Any time we were hanging out after a race and having a few beers.



PHOTO: WARRICK

MATHEU TOULOUSE

CYCLOCROSS



SIZE	PART #	DUROMETER	TPI	BEAD	MAX PSI	WEIGHT	MSRP
700x35c	TB91448000	62	120	Foldable	75	315	\$44.00

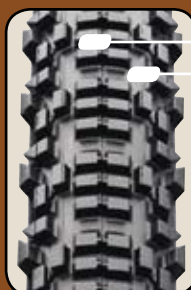


- MUD, SNOW AND HARDPACK PERFORMANCE
- CYCLOCROSS RACING TIRE

Accept no limitations. The diverse terrain of a cyclocross race requires a unique solution: the Raze. A fast-rolling center ridge with widely spaced side lugs sheds mud. The Raze's slightly softer compound remains pliable in cold conditions, and the improved casing maintains integrity at low pressures.

RAZE

SIZE	PART #	DUROMETER	TPI	BEAD	MAX PSI	WEIGHT	MSRP
700x35c	TB91445000	70	60	Foldable	75	440	\$44.00



- 6-PACK SQUARE CENTER KNOBS
- L-SHAPED BLOCK SIDE KNOBS
- CYCLOCROSS RACING TIRE

The Locust CX 6-pack tread design allows the tire to roll fast on pavement and provides great traction on the wide variety of terrains encountered in a Cyclocross event. For the off-camber sections that are sure to be found on every good Cyclocross course, the Locust CX has squared shoulder lugs to provide the best traction and allow you to take the line you want.



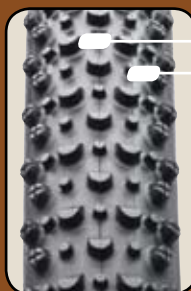
LOCUST



PHOTO: GIBSON



SIZE	PART #	DUROMETER	TPI	BEAD	MAX PSI	WEIGHT	MSRP
700x35c	TB91443000	70	60	Foldable	75	375	\$44.00



- RAMPED ROUND KNOB DESIGN – FRONT OR REAR
- DIRECTIONAL TREAD
- CYCLOCROSS RACING TIRE

The MiMo CX is engineered for the wet terrain that Cyclocross races are known for. Generous ramping on the larger knobs gives the MiMo CX low rolling resistance, while the smaller, round knobs in-between give extra bite in loose terrain.



MIMO CX



PHOTO: WARRICK

TEAM MAXXIS

SABRINA
JONNIER

PHOTO: WARRICK



MATHIEU
TOULOUSE

PHOTO: GIBSON



For over twenty years Maxxis has provided riders with the most up-to-date technology and outstanding performance needed for the most grueling trails and race conditions. In this time, **Maxxis tires have become the benchmark for performance and dependability** in the mountain bike market. For the lightest, fastest rolling tires that will stick to the trail in any condition; choose a set of our world class XC tires.

MAXXIS ON THE TRAIL

MOUNTAIN

Team Maxxis is one of the **top professional mountain bike teams** on the international circuit. Team Maxxis Professional Mountain Bike Racing has been a successful icon on the race scene for over a dozen years, making it one of the longest sustaining teams in the business. Our riders are amongst the best in the world in both gravity and cross country racing, a rarity in today's circuit. Whether racing the World Cup series, the NMBS events, or the Olympics, **Team Maxxis riders are a podium threat at every event they enter.** The same great sponsors that support the team and make racing possible, also rely on these athletes to provide feedback developing some of the best equipment in the world — including their full selection of tires.



PHOTO: GIBSON

CAMERON
GOLC



PHOTO: GIBSON

LUKE
STROBEL



PHOTO: GIBSON

GEOFF
KABUSH



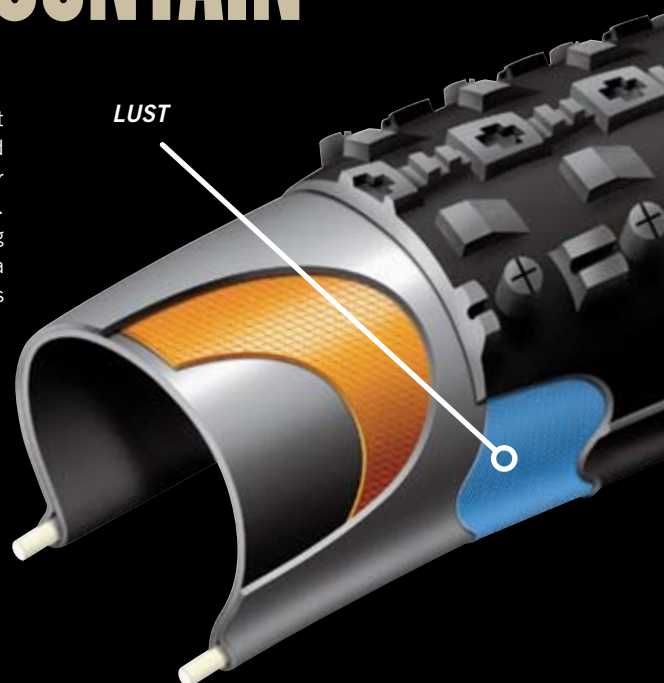
LUST TECHNOLOGY - MOUNTAIN

LIGHTWEIGHT ULTIMATE SIDEWALL TECHNOLOGY

Maxxis Mountain Tubeless tires, certified to UST® standards, now feature Lightweight Ultimate Sidewall Technology (LUST). LUST offers better puncture resistance, improved air retention, better longevity and lower weight than previous tubeless technologies. Our engineers were not content with simply having one of the best tubeless tires on the market. Instead, they went back to the drawing board, reinvented the tubeless tire from the casing to the tread and addressed your complaints about tubeless technology. By adding a thin fabric layer to the sidewall, covered in a special air-tight rubber compound, Maxxis created a casing that is lighter, tougher and holds air better.

LUST

- 15% LIGHTER THAN OUR PREVIOUS TUBELESS TIRES
- BETTER AIR RETENTION THAN COMPETITORS' TIRES
- INCREASED SIDEWALL PUNCTURE RESISTANCE





MAXXLITE 310

SIZE	PART #	DUROMETER	TPI	BEAD	WEIGHT	MSRP
26x1.95	TB66548000	61	120	Foldable	310	\$80.00



- FAST ROLLING RAMPED KNOBS - FRONT OR REAR
- 310 GRAMS
- RACE USE ONLY

310 grams! A triumph of Maxxis engineering. With a specially formulated rubber compound and lightweight casing, the MaxxLite 310 is available for your most important races. If you're ready for extreme acceleration on hard, dry surfaces, it's time to experience the MaxxLite 310.

SIZE	PART #	DUROMETER	TPI	BEAD	WEIGHT	MSRP
26x2.00	TB69095500	62	120	Foldable	585	\$53.00



- LOW RESISTANCE DIAMOND-KNURLED CENTER
- RACE USE ONLY

Designed specifically for hardpack cross country and short-track races, the Oriflamme is not suitable for every race. But when conditions are right, the diamond-knurled center and slightly raised side knobs offer that extra boost to push you to the top of the podium.



ORIFLAMME



PHOTO: WARRICK

MTB TIRE GUIDE								KEY FEATURES		
CROSS COUNTRY	FREERIDE	MODEL	HARD PACK	LOOSE OVER HARD	MEDIUM	LOOSE	WET	MUD	CORNERING CONTROL	ROLLING EFFICIENCY
■	■	MaxxLite 310	■■■■■						■ ■ ■ ■ ■	■ ■ ■ ■ ■
■	■	Oriflamme	■■■■■						■ ■ ■ ■ ■	■ ■ ■ ■ ■
■	■	Ardent			■■					



PHOTO: WARRICK

GEOFF KABUSH

What did you want to be as a kid? NBA player.

Who was your role model growing up? Today? MacGyver...Markus Naslund.

What one item could you not live without on the road? Espresso Machine.

Any pre-race superstitions? The only thing I say is don't get too stressed about anything because it is just a waste of energy. I prefer to relax and just go out and ride my bike.

List hobbies outside of cycling: Coffee shops, Eating good food, Relaxing, Watching Hockey, Skiing, Listening to Music, Learning.

What is the strangest thought that goes through your head while racing? Mmmm.....smells like steak on the BBQ.

Who would portray you in a movie? Mr. T.

Favorite TV show? Hockey Night in Canada when the Vancouver Canucks are in action.

Biggest Weakness for a dessert? Dark Chocolate anything, pumpkin pie.

Dream Car? 1966 VW Bus.

Your Best Pick Up Line? Hey baby, fries and gravy.

Is your accent real or fake? Canadians don't have an accent; everyone else talks funny.

How often do women approach you for leg shaving advice? I am the one who needs advice.

How often are you recognized? Never, I always go out in a wig, hat, and sunglasses.

My friends would say I am... The strong but silent type...

Any pets? Two Bengal cats....Ibis and Dodo; one yellow lab.....Casey; another dog pending...

What reality TV show would you pick to star in and why? Landscapers Challenge...my backyard needs some work.

What is your trick for deflecting the advances of podium girls? My wife...all 5'4", 110lbs.

Describe your best memory with the team. Sliding on my knees, ripping open my WWF t-shirt; and winning a decoy owl for the best wig contest at NORBA Finals 2004...

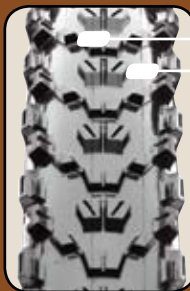


PHOTO: GIBSON



ARDENT

SIZE	PART #	DUROMETER	TPI	BEAD	WEIGHT	MSRP
26x2.25	TB72555000	60	60	Foldable	650	\$53.00
26x2.40	TB74177000	60	60	Foldable	855	\$53.00
29x2.25	TB96712500	60	60	Foldable	765	\$53.00



- LIGHTWEIGHT SINGLE PLY CASING
- HIGH-VOLUME CASING

An aggressive tread in high-volume casings distinguishes the newest addition to Maxxis' downhill and all-mountain disciplines. Designed with great traction in mind, the Ardent doesn't forget the racer. Large block-style side knobs offer numerous edges for high-speed corners. Center tread, while designed for braking and accelerating traction, also features ramped knobs to minimize rolling resistance. With a wide variety of size offerings, the Ardent captures every mountain rider's needs.

SIZE	PART #	DUROMETER	TPI	BEAD	WEIGHT	MSRP
26x2.10	TB69789000	70	60	Foldable	535	\$48.00

TUBELESS with LUST (LIGHTWEIGHT ULTIMATE SIDEWALL TECHNOLOGY)

26x2.10	 TB69790000	62/70	120	Foldable	690	\$65.00
---------	--	-------	-----	----------	-----	---------



- MICRO-RAMPED CENTER KNOBS
- C-SHAPED SIDE KNOBS

Racers take note: If you're looking for a fast, light tire with a consistent, predictable feel from straight-line to corner, the Monorail delivers. The micro-ramped center knobs offer spacing to grab rough and sandy surfaces, while the stability bars keep flex and rolling resistance to a minimum. Widely spaced mid-knobs help shed mud, while the C-shaped side knobs produce cornering predictability necessary in any terrain.



MONORAIL

SIZE	PART #	DUROMETER	TPI	BEAD	WEIGHT	MSRP
26x2.10	TB69786000	70	60	Foldable	65	\$47.00



- ROUND PROFILE FOR CONSISTENT CORNERING
- FAST ON HARD PACK

With tightly spaced knobs and a round profile, the Ridgeline works great in hardpack to slightly loose conditions. The Ridgeline masters dry trails, offering athletes awesome lean angles with little sacrificed momentum.

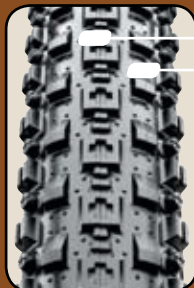


RIDGELINE

SIZE	PART #	DUROMETER	TPI	BEAD	WEIGHT	MSRP
26x2.10	TB69784000	70	60	Foldable	570	\$47.00
26x2.10	TB69783200	62	120	Foldable	530	\$53.00
26x2.25	TB72548000	60	60	Foldable	730	\$53.00
29x2.10	TB96699000	70	60	Foldable	620	\$47.00

TUBELESS with LUST (LIGHTWEIGHT ULTIMATE SIDEWALL TECHNOLOGY)

26x2.10	 TB69624000	70	120	Foldable	690	\$61.00
26x2.25	 TB72545000	62/70	120	Foldable	850	\$61.00



- FAST ROLLING CENTER RIDGE - FRONT OR REAR
- RAISED SIDE KNOBS FOR BETTER CORNERING

The CrossMark is the dramatic evolution of the Cross Country racing tire. The nearly continuous center ridge flies on hardpack, yet has enough spacing to grab wet roots and rocks. The slightly raised ridge of side knobs offers cornering precision never before seen on a tire this fast.

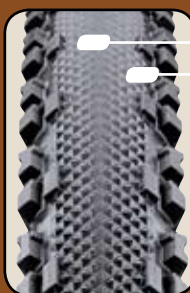


CROSSMARK



HIGH ROLLER SS

SIZE	PART #	DUROMETER	TPI	BEAD	WEIGHT	MSRP
26x2.35	TB73620900	60	60	Wire	720	\$47.00



- SEMI-SLICK DESIGN – FRONT AND REAR
- SUPER FAST FOR DUAL SLALOM
- LIGHTWEIGHT SINGLE-PLY CASING

By replacing the center knobs on the High Roller with diamond knurl, we've eliminated virtually all rolling resistance. Yet the High Roller's side knobs are intact, preserving the cornering precision you've come to expect. For hardpack DS courses, the High Roller Semi-Slick can't be beat.





SIZE	PART #	DUROMETER	TPI	BEAD	WEIGHT	MSRP
26x1.80	TB65713700	62	120	Foldable	490	\$53.00
26x2.10	TB69767700	62	120	Foldable	510	\$53.00



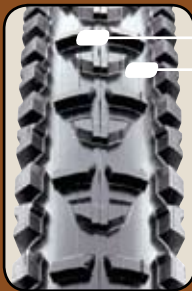
WIDELY SPACED, CLEATED KNOB DESIGN – FRONT OR REAR
LOW-VOLUME MUD TIRE

Inspired by our professional European XC racers for racing on muddy terrain. Small profile is lightweight and cuts through loose terrain, while the spiked tread pattern works to find traction through the mud. The widely spaced tread pattern resists packing by shedding mud and loose, damp soil. The Medusa performs well in mud, and the low profile also makes it an excellent choice for lighter riders.

SIZE	PART #	DUROMETER	TPI	BEAD	WEIGHT	MSRP
26x2.10	TB69764400	70	60	Foldable	540	\$47.00
26x2.10	TB69764500	62	120	Foldable	480	\$53.00
26x2.35	TB73616200	60	60	Foldable	695	\$53.00
26x2.35	TB73614500	60	60	Wire	850	\$47.00
26x2.35	TB73615800	42	60	Wire	850	\$47.00

TUBELESS with LUST (LIGHTWEIGHT ULTIMATE SIDEWALL TECHNOLOGY)

26x2.10	 TB69622200	62/70	120	Foldable	680	\$65.00
26x2.35	 TB73613600	70	120	Foldable	890	\$65.00



RAMPED KNOB DESIGN - FRONT OR REAR
GREAT CORNERING

One of our most popular and versatile mountain tires, the High Roller's ramped leading edges roll fast, while the side lugs offer stability at higher speeds and a sharp edge to hold corners. The grooved center knobs provide straight-line control. The High Roller's tread design translates well to all mountain bike disciplines including Downhill, Cross Country, and Freeride.




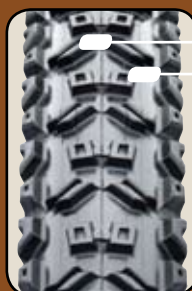
HIGH ROLLER



SIZE	PART #	DUROMETER	TPI	BEAD	WEIGHT	MSRP
26x2.10	TB69810000	70	60	Foldable	640	\$47.00
26x2.10	TB69810100	62	120	Foldable	595	\$53.00
26x2.25	TB72552000	60	60	Foldable	660	\$53.00
26x2.40	TB74179000	60	60	Foldable	845	\$55.00

TUBELESS with LUST (LIGHTWEIGHT ULTIMATE SIDEWALL TECHNOLOGY)

26x2.10	 TB69801000	62/70	120	Foldable	735	\$65.00
---------	--	-------	-----	----------	-----	---------






OPPOSING PARALLELOGRAM
AGGRESSIVE SIDE KNOB
HIGH-VOLUME CASING

Alison Dunlap designed the ADvantage as a high-volume, aggressive cross country tire that corners great on big side knobs. It also climbs and brakes with authority, thanks to the opposing parallelogram center tread design. Ramped center knobs keep rolling resistance minimal and the wide lug spacing sheds mud easily.

SIZE	PART #	DUROMETER	TPI	BEAD	WEIGHT	MSRP
26x1.95	TB66712900	70	60	Foldable	520	\$47.00
26x1.95	TB66713000	62	120	Foldable	505	\$53.00
26x2.10	TB69756900	70	60	Foldable	615	\$47.00
26x2.10	TB69757100	62	120	Foldable	510	\$53.00
26x2.35	TB73561500	70	60	Foldable	790	\$53.00
29x2.10	TB96696000	70	60	Foldable	705	\$47.00

TUBELESS with LUST (LIGHTWEIGHT ULTIMATE SIDEWALL TECHNOLOGY)

26x1.95	 TB66540100	70	120	Foldable	610	\$65.00
26x2.10	 TB69754200	70	120	Foldable	660	\$65.00
26x2.35	 TB73457100	70	120	Foldable	785	\$65.00



- DIRECTIONAL RAMPED PENTAGON KNOB DESIGN - FRONT OR REAR
- EXCELLENT MULTI-CONDITION PERFORMANCE

The Ignitor tread pattern was designed for the most discerning professional racers and has already laid claim to multiple World Cup victories. The well-spaced tread pattern fills in nicely to provide low rolling resistance in the straights, while the ramped pentagonal knobs provide excellent traction in the corners and on medium soil.



IGNITOR

KATERINA NASH

When were you born? 12/09/1977.

Where were you born? Prachatice, Czech Republic.

How many years have you participated in your sport? Twelve.

Do you have any other special talents? I think I should be a rally car driver.

Where is your favorite place to bike? Tahoe, Colorado, Czech Republic, Alps.

How would you describe your personal sense of style? Laid back, comfortable, but carefully chosen.

Who would play you in a movie? Natalie Portman.

Who is your secret celebrity crush? John Cusack.

What do you dislike about yourself? Few body parts could be different, but I can live with myself just fine.

What words or phrase do you most overuse? "Just", "really", "no worries".

Favorite must-have beauty products? Sun screen, Neutrogena hand cream, toothpaste and toothbrush. I am an obsessive teeth brusher and try to brush my teeth right after races and rides.

What are your travel essentials? Earplugs and funny looking therapeutic eye covers, ATM card and bike.

What is your favorite place to vacation? I need to make some time for vacation so I can find my favorite place.

Career Highlights? 3-time Olympian.



PHOTO: WARRICK

MOUNTAIN



PHOTO: WARRICK



PHOTO: WARRICK

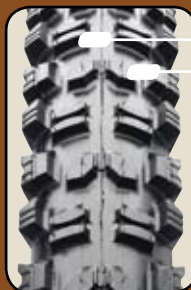


PHOTO: WARRICK



PHOTO: GIBSON

SIZE	PART #	DUROMETER	TPI	BEAD	WEIGHT	MSRP
26x2.35	TB73557800	60	60	Foldable	835	\$53.00
26x2.35	TB73557400	60	60	Wire	875	\$47.00
26x2.35	TB73557000	42	60	Wire	875	\$47.00



- DIRECTIONAL, RAMPED KNOB DESIGN – FRONT OR REAR
- LIGHTWEIGHT SINGLE-PLY CASING

The Minion DHR was engineered to meet the demands of the UCI World Cup downhill races. Designed by our European racing development effort, Team Maxxis-MSC. The DHR features ramped knobs, like the DHF, but the channels in the knobs are designed for braking and accelerating. Depending on course conditions, the DHR works well front and rear or as a rear paired with DHF.



MINION DHR



MINION DHF

SIZE	PART #	DUROMETER	TPI	BEAD	WEIGHT	MSRP
26x2.35	TB73550800	60	60	Foldable	830	\$53.00
26x2.35	TB73550400	60	60	Wire	870	\$47.00
26x2.35	TB73550000	42	60	Wire	870	\$47.00



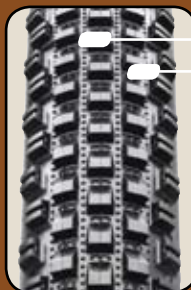
- DIRECTIONAL, RAMPED KNOB DESIGN – FRONT OR REAR
- LIGHTWEIGHT SINGLE-PLY CASING

The Minion DHF was designed for the often loose and muddy conditions of the NORBA downhill series. DHF incorporates ramped knobs for low rolling resistance and channel-cut knobs to increase gripping edges, giving straight-line control and precise cornering. Depending on course conditions, DHF works well front and rear or as a front paired with DHR.

SIZE	PART #	DUROMETER	TPI	BEAD	MAX PSI	WEIGHT	MSRP
26x1.90	TB65998100	70	60	Foldable	65	460	\$47.00
26x1.90	TB65998500	62	120	Foldable	65	450	\$53.00
26x2.00	TB69087000	70	60	Foldable	65	580	\$47.00
26x2.00	TB69088500	62	120	Foldable	65	520	\$53.00
26x2.35	TB73539800	60	60	Foldable	65	710	\$53.00
26x2.35	TB73536600	60	60	Wire	65	750	\$50.00
26x2.35	TB73536500	42	60	Wire	65	750	\$50.00

TUBELESS with LUST (LIGHTWEIGHT ULTIMATE SIDEWALL TECHNOLOGY)

26x2.00	 TB69103100	70	120	Foldable	60	675	\$65.00
---------	--	----	-----	----------	----	-----	---------



- RAMPED SQUARE KNOB DESIGN - FRONT OR REAR
- DIRECTION-SPECIFIC
- LOW ROLLING RESISTANCE

The TT works on a vast number of terrains and conditions, which is why it is the favored tread of many of our pro riders. The TT hooks up well because each small, square lug in the tread pattern is ramped to roll easily, yet tightly spaced so more knobs are making contact with the ground. The contact patch is effective on a wide variety of surfaces.



LARSEN TT

There is great riding all around us. Just because you call the city home, doesn't mean you can't find great riding on your mountain bike. Maxxis offers urban tires that are built to stand up to whatever you throw their way. **These tires thrive on the aggressive street** and dirt riding that you hit on your urban assault.

MAXXIS ON CEMENT



PHOTO: HYLANDS



PHOTO: HYLANDS

JEFF LENOSKY

Where were you born? Passiac, NJ.

Place you currently live or call home? Sparta, NJ.

First bike? Some motorcycle looking thing with a fake gas tank.

Favorite movie? Old School.

Favorite place to ride? My backyard.

Biggest riding accomplishment? Inspiring people to ride.

Favorite band? Angels and Airwaves.

Favorite race/event? Teva Mountain Games.

Favorite riding discipline other than what you normally do? Cross Country.

Favorite hobby, other than riding? Hanging with my kids.

What do you want your friends to remember you for when you are gone? Good times.

Something interesting about you that your fans do not know already? I work really hard to look like I don't work hard!

Most exciting/memorable thing that has happened to you on or off the bike? Having kids off the bike..... having jump jams in my backyard with 300 riders.

Biggest pet peeve? Traffic.

If you were not a racer what would you like to do for a living? Trying to rule the world...haha.

URBAN TIRE GUIDE					
MODEL	DIRT	FLAT	STREET	PARK	VERT
Holy Roller					
Hookworm					

SIZE	PART #	DUROMETER	TPI	BEAD	WEIGHT	MSRP
26x2.20	TB72392000	60	60	Wire	800	\$36.00
24x2.40	TB50611500	60	60	Wire	795	\$36.00
26x2.40	TB74180100	60	60	Wire	865	\$36.00



- INVERTED SEMI-KNOB DESIGN
- LIGHTWEIGHT SINGLE-PLY CASING
- URBAN ASSAULT/DIRT JUMP

Proven in the hardpack and pavement of the BMX world, the Holy Roller is now available in 24" and 26". The Holy Roller urban assault tire is the perfect weapon for riders like Aaron Chase and Jeff Lenosky, who may be dirt jumping today but shredding on the streets of Gotham City tomorrow.

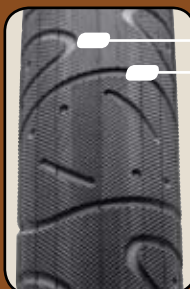


HOLY ROLLER



HOOKWORM

SIZE	PART #	DUROMETER	TPI	BEAD	WEIGHT	MSRP
24x2.50	TB50650300	70	60	Wire	1000	\$42.00
26x2.50	TB74255100	70	60	Wire	1250	\$42.00



- CURVED GROOVED SLICK DESIGN
- SINGLE-PLY CASING
- URBAN ASSAULT

The original urban assault tire, designed to take the abuses of the most aggressive street riders. Huge air-volume softens the drops, while the inverted tread design makes rolling resistance minimal. Bead-to-bead tread provides durability and traction whether you're dropping staircases, grinding rails or riding in your local skatepark.



PHOTO: WARRICK

MAXXIS AND GRAVITY

After years of development by top engineers and countless test runs down the mountain, **we have created the most widely used** professional downhill tires. Proving themselves in the local and international race circuits, our DH tires have won almost every race including **countless World Championships**. In any condition we have the perfect compound and tread design to put you on the podium.

SABRINA JONNIER

Where were you born? Hyeres, France.

Place you currently live or call home? Hyeres.

First bike? My parents got me a little red bike from the supermarket, raced my 1st BMX races with that.

Favorite movie? Old School.

Favorite place to ride? San Romolo, Italy.

Biggest riding accomplishment? 2006 and 2007 World Champion.

Favorite band? Too many...

Favorite race/event? Mont Sainte Anne, Canada.

Favorite riding discipline other than what you normally do? Motocross rides with friends in the winter.

Favorite hobby, other than riding? Yoga, scrapbooking, books.

What do you want your friends to remember you for when you are gone? Me being Happy.

Something interesting about you that your fans do not know already? Doesn't hide anything!

Most exciting/memorable thing that has happened to you on or off the bike? All the interesting people I have been meeting over the years of racing.

Biggest pet peeve? Losing a race....

If you were not a racer what would you like to do for a living? Can't think of a better job than racing bikes...



PHOTO: WARRICK



PHOTO: WARRICK

THE STROBEL

What did you want to be as a kid? Professional motocross racer.

Who was your role model growing up? Today? My mom and dad, Shawn Palmer, Darren Brown, Bart McDaniel, and Casey Northern.

What one item could you not live without on the road? My bike.

Any pre-race superstitions? Same goggles and gloves I used in practice.

List hobbies outside of cycling: Working, thinking about riding, snowboarding, hiking, painting, music, reading, hanging out with friends and family, relaxing and having fun.

What is the strangest thought that goes through your head while racing? I wonder how much roost I threw up in that last corner.

Who would portray you in a movie? Sean Connery.

Favorite TV show? Family Guy or whatever's on Discovery Channel.

Biggest weakness for a dessert? Being full from dinner.

Dream car? The TVR Sagaris.

Your best pick-up line? Never used one.

Is your accent real or fake? Nothing fake about redneck English..... I reckon.

My friends would say I am... Gnarly.

Any pets? One fat cat named Smokey.

What reality TV show would you pick to star in and why? Reality can't be found on TV.

What is your trick for deflecting the advances of podium girls? Who's deflecting?

Why would anybody choose to ride their bike UP a mountain, when you can just go downhill all the time? Why would you shave your legs when you can let it grow?

3C TRIPLE COMPOUND - DOWNHILL

3C DH – TRIPLE COMPOUND TECHNOLOGY, INVENTED FOR OUR DOWNHILL LINE

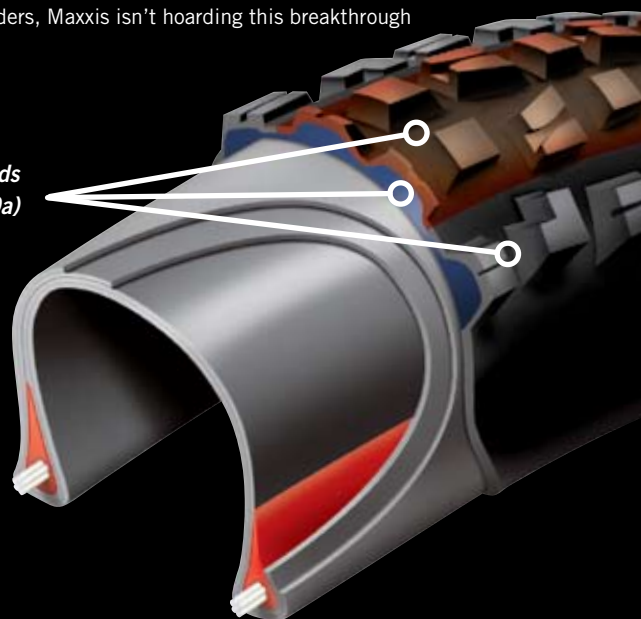
Maxxis has revolutionized the DH racing scene again. By combining the best properties of our most popular rubber compounds, we've created a tire that brakes and corners better than previously thought possible, while offering tread life approaching that of our harder compound tires. True to our focus on delivering the best possible technology to all riders, Maxxis isn't hoarding this breakthrough for professional racers: we're also offering it to you in your favorite tread patterns.



TRIPLE COMPOUND
TECHNOLOGY



Three distinct silica-based compounds
of varying different hardness (70a, 42a, 40a)

- HARDER (70A) BASE LAYER SUPPORTS KNOBS SO THEY DON'T SQUIRM OR FOLD UNDER IMMENSE CORNERING, BRAKING AND LANDING FORCES
- SUPER TACKY (42A) CENTER LUGS FOR AWESOME BRAKING
- SLOW REEZAAY (40A) SIDE LUGS FOR STABLE CORNERING WITHOUT REBOUND-INDUCED BOUNCE






ARDENT

SIZE	PART #	DUROMETER	TPI	BEAD	WEIGHT	MSRP
26x2.40	TB74176100	60	60	Wire	1170	\$70.00
26x2.40	 TB74176300	70/42/40	60	Wire	1205	\$80.00
26x2.60	TB74306000	60	60	Wire	1205	\$70.00
26x2.60	 TB74306200	70/42/40	60	Wire	1270	\$80.00



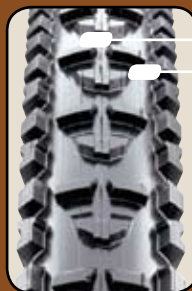
- DESIGNED FOR TRACTION
- HIGH VOLUME CASING
- 2-PLY DH CASINGS WITH BUTYL-PROTECTED SIDEWALLS
- 3C TRIPLE COMPOUND TECHNOLOGY AVAILABLE

An aggressive tread in high-volume casings distinguishes the newest addition to Maxxis' downhill and all-mountain disciplines. Designed with great traction in mind, the Ardent doesn't forget the racer. Large block-style side knobs offer numerous edges for high-speed corners. Center tread, while designed for braking and accelerating traction, also features ramped knobs to minimize rolling resistance. With a wide variety of size offerings, the Ardent captures every mountain rider's needs.

SIZE	PART #	DUROMETER	TPI	BEAD	WEIGHT	MSRP
24x2.50	TB50653300	60	60	Wire	1150	\$70.00
26x2.35	TB73615700	42	60	Wire	1125	\$70.00
26x2.50	TB74302100	60	60	Wire	1250	\$70.00
26x2.50	TB74301700	42	60	Wire	1250	\$70.00
26x2.50	 TB74301600	70/42/40	60	Wire	1300	\$80.00
26x2.70	TB74316300	60	60	Wire	1350	\$70.00
26x2.70	TB74315000	42	60	Wire	1350	\$70.00

TUBELESS with LUST (LIGHTWEIGHT ULTIMATE SIDEWALL TECHNOLOGY)

26x2.50	 TB74220000	42	27	Foldable	1300	\$73.00
---------	--	----	----	----------	------	---------



- RAMPED KNOB DESIGN – FRONT OR REAR
- 2-PLY DH CASINGS WITH BUTYL-PROTECTED SIDEWALLS
- 3C TRIPLE COMPOUND TECHNOLOGY AVAILABLE

One of our most popular and versatile mountain bike tires, the High Roller's ramped leading edges roll fast while the side lugs offer stability at speed and a sharp edge to hold corners. The grooved center knobs provide straight-line control. The High Roller's tread design translates well to all mountain bike disciplines including Downhill, Cross Country, and Freeride.



HIGH ROLLER








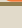








DH TIRE GUIDE		MODEL	HARD PACK	LOOSE OVER HARD	MEDIUM	LOOSE	WET	MUD	KEY FEATURES	
CROSS COUNTRY	FREERIDE								CORNERING CONTROL	ROLLING EFFICIENCY
		Ardent								
		High Roller								
		Minion DHR								
		Minion DHF								
		Swampthing								
		Wetscream								

PHOTO: GIBSON



SIZE	PART #	DUROMETER	TPI	BEAD	WEIGHT	MSRP
26x2.50	TB74272500	60	60	Wire	1350	\$70.00
26x2.50	TB74272000	42	60	Wire	1350	\$70.00
26x2.50 	TB74272600	70/42/40	60	Wire	1350	\$80.00
26x2.70	TB74325300	60	60	Wire	1400	\$70.00
26x2.70	TB74325000	42	60	Wire	1400	\$70.00

TUBELESS with LUST (LIGHTWEIGHT ULTIMATE SIDEWALL TECHNOLOGY)

26x2.50 	TB74222000	42	27	Foldable	1300	\$73.00
---	------------	----	----	----------	------	---------



- DIRECTIONAL, RAMPED KNOB DESIGN – FRONT OR REAR
- 2-PLY DH CASINGS WITH BUTYL-PROTECTED SIDEWALLS



The Minion DHR was engineered to meet the demands of the UCI World Cup downhill races. Designed by our European racing development effort, Team Maxxis-MSC. The DHR features ramped knobs, like the DHF, but the channels in the knobs are designed for braking and accelerating. Depending on course conditions, the DHR works well in front and rear or as a rear paired with DHF.



MINION DHR



MINION DHF

SIZE	PART #	DUROMETER	TPI	BEAD	WEIGHT	MSRP
26x2.50	TB74265700	60	60	Wire	1330	\$70.00
26x2.50	TB74265000	42	60	Wire	1330	\$70.00
26x2.50 	TB74265500	70/42/40	60	Wire	1330	\$80.00
26x2.70	TB74319300	60	60	Wire	1380	\$70.00
26x2.70	TB74319000	42	60	Wire	1380	\$70.00
26x2.70 	TB74319400	70/42/40	60	Wire	1380	\$80.00

TUBELESS with LUST (LIGHTWEIGHT ULTIMATE SIDEWALL TECHNOLOGY)

26x2.50 	TB74262000	42	27	Foldable	1270	\$73.00
---	------------	----	----	----------	------	---------



- DIRECTIONAL, RAMPED KNOB DESIGN – FRONT OR REAR
- 2-PLY DH CASINGS WITH BUTYL-PROTECTED SIDEWALLS

The Minion DHF was designed for the often loose and muddy conditions of the NORBA downhill series. DHF incorporates ramped knobs for low rolling resistance and channel-cut knobs to increase gripping edges, giving straight-line control and precise cornering. Depending on course conditions, DHF works well front and rear or as a front paired with DHR.



DOWNHILL



SIZE	PART #	DUROMETER	TPI	BEAD	WEIGHT	MSRP
26x2.50	TB74252000	60	60	Wire	1180	\$70.00
26x2.50	TB74251700	42	60	Wire	1180	\$70.00



- WIDELY SPACED, CLEATED KNOB DESIGN
- 2-PLY DH CASINGS WITH BUTYL-PROTECTED SIDEWALLS

The rubber used in the Swampthing is firm enough that knobs won't fold, yet soft enough to hook up on wet rocks and roots. The rounded profile allows the Swampthing to grab without digging into the soil.

SWAMPTHING

SIZE	PART #	DUROMETER	TPI	BEAD	WEIGHT	MSRP
26x2.50	TB74276000	42	60	Wire	1225	\$70.00



- WIDELY SPACED, SHARP SQUARE DESIGN
- 2-PLY DH CASINGS WITH BUTYL-PROTECTED SIDEWALLS

Designed for the muddiest downhill race course in the world: Les Gets, France. Not for your local trail, the Wet Scream is intended for competition use only on professionally maintained courses. When the course turns ugly, trust the Wet Scream to carry you to victory.



WETSCREAM



PHOTO: WARRICK



PHOTO: WARRICK

ATHERTON FAMILY

CAMERON COLE

What did you want to be as a kid? A professional sports person.

Who was your role model growing up? Today? Growing up, my role model was anybody who rode a bike. Today it would be Nathan Rankin or John Kirkaldie.

What one item could you not live without on the road? iPod.

Any pre-race superstitions? I just try and enjoy it and have fun. Besides, why do you ride bikes in the first place? For fun!

List hobbies outside of cycling: Friends/hanging out, riding bikes with friends, watching other sports, listening to music, PS2. I'm into anything that's fast, goes on dirt, or is powered by an engine.

What is the strangest thought that goes through your head while racing? Sometimes, I get random songs that pop into my head.

Who would portray you in a movie? That's a hard one...

Favorite TV show? Prison Break and Grey's Anatomy.

Biggest Weakness for a dessert? Anything with chocolate.

Dream Car? A van or something with a rotary engine.

Is your accent real or fake? Real for sure.

My friends would say I am... cool, funny, mongrel and laid back.

Any pets? No.

What reality TV show would you pick to star in and why? Big Brother. It looks like fun, and I think I could win it because I am easy to live with, and I get along with everyone.

What is your trick for deflecting the advances of podium girls? Haven't had to yet, so I guess I'll see later this year, haha.

Describe what winning a World Championship felt like: Unreal, you can't really describe it. It just feels so good to know on that day you were the best in the world.



PHOTO: GIBSON



PHOTO: WARRICK



PHOTO: KOSMAN



PHOTO: SOUNEY

When were you born? March 22nd 1986.

Where do you currently reside? State College, PA.

Do you have a nickname or an alter ego? Jamie Bestwick calls me iPhone Tone, and Cam White calls me ANaps.

First bike? My first actual bike was a Huff. My first actual BMX bike was a Schwinn Powermatic.

Favorite movie? All of the Pirates movies.

Favorite place to ride? Corona, CA Woodward, PA.

Biggest riding accomplishment? That's a hard one. I feel like everything I do is a bigger accomplishment than the last one.

Favorite band? AFI, MGMT, Block Party, Of Montreal, Slayer ETC...

Favorite race/event? Elevation.

Favorite riding discipline other than what you normally do? A good mini ramp is always fun!

Favorite hobby, or talent other than riding? Driving my car really fast. Being OCD with neatness.

What do you want your friends to remember you for when you are gone? That I was always generous and I treated them well.

Something interesting about you that your fans do not know already? I've got a big tattoo that some of my good friends don't even know about.

What should your new catchphrase be? I have no idea? SHAZAM!

How many times have you been knocked out? Twice.

What motto do you live by? Live Rich or Die Trying! Hahahahaha Just kidding. Have fun on your bike always. If you can't do that then maybe it's not for you.

ANTHONY NAPOLITAN

BMX

MAXXIS IN THE AIR



PHOTO: LANDRUM

Maxxis designs the ideal tires for the relentless pursuit of the perfect line on a 20 & 24 inch bike. **We make everything from high-performance race tires** to durable, aggressive freestyle tires for the street and park. So for the most dependable rubber in every situation, choose a set of Maxxis tires to elevate your ride.



PHOTO: LANDRUM

ROBERT DE WILDE

Where were you born? In Kampen, the Netherlands.

Where do you currently reside? In Foothill Ranch, California.

Started racing BMX? 1982, when I was 5 years old.

Do you have a nickname or an alter ego? Afro Bob, 77 is my personal number.

First bike? Alpina BMX 2000. Broke the frame 3 times.

Favorite movie? The new Batman movies.

Favorite place to ride? Bellflower BMX track.

Biggest riding accomplishment? 1999 UCI World Champion.

Favorite band? Disturbed.

Favorite race/event? UCI SX events.

Favorite riding discipline other than what you normally do? Mountain bike.

Favorite hobby, other than riding? Playing basketball. I got game like Kobe, act like you know me!!!

Something interesting about you that your fans do not know already? I don't know, I'm pretty much an open book. What you see is what you get!!!!

What should your new catchphrase be? You ain't Dutch, you ain't much!!!!!!

How many times have you been knocked out? Twice. Good thing is, that I can't remember anything.

What motto do you live by? Gaan met die banana!!!!!!



PHOTO: ZIZZO

MORGAN WADE

Where were you born? I was born in Tyler Texas.

Where do you currently reside? My wife Natalie and I just purchased our first home, and it's really close to where I grew up in Tyler!

Do you have a nickname or an alter ego? Back in 2003, the first year I was in the X-Games, that question was asked on one of the info sheets when I signed up and I put down "Mad Morgan" to be funny, but it's still down on file with ESPN as my nickname, so I guess that's it... No one has ever called me that to this day though... Or you could just call me "Mo-Mo"...

First bike? My first bike was a Huffy I think. I got it when I was five years old. My first Freestyle bike was a Schwinn "Jay Miron" Powermatic. I was fourteen when that purchase was made!

Favorite movie? I'm going to go with "Snatch" as my favorite!

Favorite place to ride? My favorite place of all time would have to be the park I grew up riding. It's not there anymore, but that would be my number one choice if I could pick!

Biggest riding accomplishment? I think my best riding accomplishment is my video part in "Drop The Hammer"

Favorite band? My favorite band is Metric.

Favorite race/event? My favorite event ever is the Backyard Jam in England. They need to start doing it again!

Favorite riding discipline other than what you normally do? When I'm not riding Street or Ramps, I like riding Dirt Jumps or Trails if there are any near by. The Mega Ramp is a blast too!!!

Favorite hobby, or talent other than riding? I enjoy art a lot. When I was in college, I was a graphic design major. Snowboarding is amazing as well!

What do you want your friends to remember you for when you are gone? I'd like my friends to remember me as a goof ball, a good friend, and someone that loved Jesus for all He did for us!

Something interesting about you that your fans do not know already? I was home schooled from first grade to twelfth.

What should your new catchphrase be? "If you're walking along and you don't run into the devil, you're probably going the same way he is!"

How many times have you been knocked out? ... I can't seem to remember... Ha ha ha! Too many!

What motto do you live by? I try my best to live by the "23 Psalm."

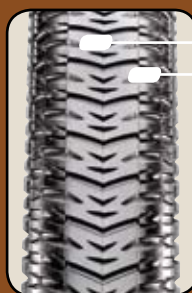


PHOTO: ZIZZO



PHOTO: ZIZZO

SIZE	PART #	DUROMETER	TPI	BEAD	MAX PSI	WEIGHT	MSRP
20x1 1/8	TB20352000	62/60	120	Wire	85	240	\$35.00
20x1 3/8	TB20629000	62/60	120	Wire	65	315	\$35.00
20x1.50	TB22329500	62/60	120	Foldable	110	285	\$45.00
20x1.75	TB24751000	62/60	120	Foldable	110	340	\$45.00
20x1.95	TB29464500	62/60	120	Foldable	110	385	\$45.00
20x2.20	TB31025000	62/60	120	Foldable	110	475	\$45.00
24x1.75	TB47649000	62/60	120	Wire	65	460	\$38.00
24x1.85	TB49213000	62/60	120	Wire	65	485	\$38.00



- LIGHTWEIGHT RACE TIRE
- DUAL COMPOUND TECHNOLOGY

Drop-The-Hammer. The first few pedal strokes win the holeshot. The holeshot wins the race. Designed for the 2008 Beijing Games, the foldable DTH is super-light to accelerate like no other BMX tire, yet holds up to the abuse you dish out. The dual-compound tread corners incomparably on hard-packed tracks and rolls fast on the straights. The Gold Medal is just a sprint away.

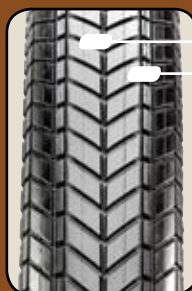


DTH



GRIFTER

SIZE	PART #	DUROMETER	TPI	BEAD	MAX PSI	WEIGHT	MSRP
20x1.85	TB29643000	62/60	120	Foldable	110	375	\$45.00
20x2.10	TB30704600	62/60	120	Foldable	110	440	\$45.00



- LIGHTWEIGHT FREESTYLE TIRE
- DUAL COMPOUND TECHNOLOGY
- 110 PSI HIGH AIR-PRESSURE RATED

It almost feels like cheating: The foldable bead and lightweight materials allow tricks to flow so much easier — without the extra weight to throw around. High pressure and dual compound tread make landings stick at any angle. Maxxis used these technologies and more to produce the Grifter — simply the best free-style tire ever.

SIZE	PART #	DUROMETER	TPI	BEAD	MAX PSI	WEIGHT	MSRP
20x1.75	TB24740000	70	60	Wire	65	400	\$24.00
20x1.85	TB29650000	70	60	Wire	65	480	\$24.00
20x2.00	TB29682000	70	60	Wire	65	540	\$24.00
20x2.25	TB35786000	70	60	Wire	65	585	\$24.00
24x1.85	TB49210000	70	60	Wire	65	620	\$26.00



- FULL SQUARE-KNOB DESIGN
- GREAT FOR LOOSE CONDITIONS

Staggered, tightly-spaced center lugs provide controllable speeds. The knob spacing increases near the shoulder lugs to produce two channels that hook up on hard pack berms as well as loose dirt on the trails. A hard 70a durometer rubber compound rolls fast and wears long.



MAXXDADDY

AUSTIN COLEMAN

BMX TIRE GUIDE					
MODEL	DIRT	FLAT	STREET	PARK	VERT
DTH					
Gripter					
MaxxDaddy					
Holy Roller					
Ringworm					
Hookworm					
M-Tread					
Miracle					



PHOTO: KOSMAN



PHOTO:

BRIAN KACHINSKY

Where were you born? I was born in Fort Knox, Kentucky but grew up in Neenah, Wisconsin.

Where do you currently reside? Downtown Chicago, IL.

Do you have a nickname or an alter ego? BK.

First bike? A red Huffy BMX, it didn't last long but it got me hooked.

Favorite movie? Slapshot.

Favorite place to ride? Street in Madison, WI (where I went to college).

Biggest riding accomplishment? Still being able to ride everyday and love it just as much as the first time I caught some air!

Favorite band? I can't pick just one, right now maybe Band of Horses.

Favorite race/event? Any metro or baco jams along with some of the real street comps are fun too.

Favorite riding discipline other than what you normally do? I love to ride dirt. It scares me but it's fun once I start making it through the jumps.

Favorite hobby, or talent other than riding? Origami and playing the tuba.

What do you want your friends to remember you for when you are gone? Brian was pretty cool and he rode some super sweet tires.

Something interesting about you that your fans do not know already? I have a large collection of assorted masks from around the world.

What should your new catchphrase be? Giv'er.

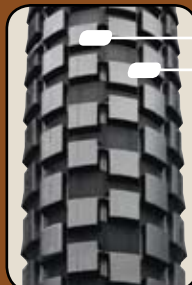
How many times have you been knocked out? I don't remember.

What motto do you live by? Find it and Grind it.



HOLY ROLLER

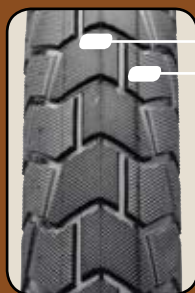
SIZE	PART #	DUROMETER	TPI	BEAD	MAX PSI	WEIGHT	MSRP
20x1 1/8	TB20350000	70	60	Wire	65	245	\$24.00
20x1 3/8	TB20628000	70	60	Wire	65	330	\$24.00
20x1.75	TB24748000	70	60	Wire	65	425	\$24.00
20x1.95	TB29478000	70	60	Wire	65	510	\$24.00
20x2.20	TB31020000	70	60	Wire	65	575	\$24.00
24x1.75	TB47640000	70	60	Wire	65	600	\$26.00
24x1.85	TB49212000	70	60	Wire	65	620	\$26.00



- INVERTED SEMI-KNOB DESIGN
- DIRT TO PAVEMENT VERSATILITY

Our most versatile BMX tire. By further tightening the spacing and modifying the knob pattern of the MaxxDaddy, we improved both handling and speed on hard clay tracks, streets and ramps. Hooks up on medium terrain and trails via a deep-cut center groove for straight line control. Excels for both the front and rear.

SIZE	PART #	DUROMETER	TPI	BEAD	MAX PSI	WEIGHT	MSRP
20x1.95	TB29459000	70	60	Wire	110	710	\$24.00



- LINEAR GROOVED SLICK DESIGN
- 110 PSI HIGH AIR-PRESSURE RATED
- GREAT FOR FLATLAND

With tread stretching from rim-to-rim, the Ringworm gives traction at any angle while protecting the sidewall from punctures and wear. The tread pattern hooks up from ramp to flatland.



RINGWORM

SIZE	PART #	DUROMETER	TPI	BEAD	MAX PSI	WEIGHT	MSRP
16x1.95	TB14410000	70	60	Wire	110	535	\$24.00
20x1.95	TB29461000	70	60	Wire	110	720	\$24.00



- CURVED GROOVED SLICK DESIGN
- 110 PSI HIGH AIR-PRESSURE RATED
- URBAN ASSAULT DURABILITY

The original urban assault tire, designed to take the abuses of the most aggressive street style riders. Bead-to-bead tread provides durability and traction whether you're dropping staircases, grinding rails or riding in your local skate park.

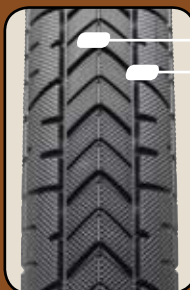


HOOKWORM



M-TREAD

SIZE	PART #	DUROMETER	TPI	BEAD	MAX PSI	WEIGHT	MSRP
20x1.85	TB29647000	70	60	Wire	110	730	\$25.00
20x2.10	TB30696000	70	60	Wire	110	800	\$25.00



- SYMMETRICAL GROOVED SLICK DESIGN
- 110 PSI HIGH AIR-PRESSURE RATED
- BEAD-TO-BEAD TREAD

The tread of the M-Tread encircles both sidewalls from rim edge to rim edge, protecting the tire casing from premature wear. This allows longer tire life for street and ramp riders who grind coping, rails, curbs, etc. The side tread also benefits high angle cornering and flat-land maneuvers.

SIZE	PART #	DUROMETER	TPI	BEAD	MAX PSI	WEIGHT	MSRP
20x1.85	TB29648000	70	60	Wire	110	620	\$25.00
20x1.85	TB29648500	70	120	Foldable	110	505	\$35.00
20x2.10	TB30698000	70	60	Wire	110	680	\$25.00
20x2.10	TB30698500	70	120	Foldable	110	545	\$35.00



- CHANNELED TREAD DESIGN
- 110 PSI HIGH AIR-PRESSURE RATED
- DESIGNED BY X-GAMES CHAMPION DAVE MIRRA

Dave Mirra designed the Miracle with channeled tread for little rolling resistance. The channels actually allow the tire to flex a little as Dave drops in, letting it grab the ramp more effectively and allowing better feel. Mirra rode the Miracle prototype to two X-Games gold medals before approving it for production – it seems he likes it.



MIRACLE





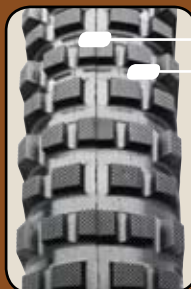
PHOTO: KRAKBERGER

MAXXIS ON THE EDGE

Trials is all about **balance and control** combined with the confidence to pull off the most miraculous tricks on a modified 20 inch bike. With the Creepy Crawler combo, **you will have the traction needed to grip** to the smallest surfaces keeping you upright to leap to the next obstacle.



SIZE	PART #	DUROMETER	TPI	BEAD	MAX PSI	WEIGHT	MSRP
20x2.00	TB29688100	42	60	Wire	50	670	\$33.00
20x2.50	TB35877000	42	25	Wire	50	975	\$37.00



- BLOCK TREAD DESIGN
- FRONT AND REAR SPECIFIC
- MODIFIED TRIALS TIRES WILL NOT FIT 20" BMX RIMS

The first offering in the trials arena from Maxxis, with specifications to meet the needs of the most demanding rider – the Creepy Crawler front and rear specific trials tires offer a supple ride, with excellent traction that gives you the confidence to make the leap. The Maxxis Creepy Crawler is the best trials tire available on the market.



CREEPY CRAWLER



FLYWEIGHT TUBES

SIZE	PART #	VALVE	WEIGHT	MSRP
26x1.90/2.125	SIB6388400	PRESTA	95	\$14.00
700x18/25C	SIB6987800	PRESTA 60MM	54	\$14.00

- .45 MM THIN WALLS
- LIGHTEST TUBE AVAILABLE
- MAXXIS RIM STRIP INCLUDED
- PRESTA & SCHRADER VALVES

SIZE	PART #	VALVE	WEIGHT	MSRP
20x1.50/1.75	IB25400000	SCHRADER	74	\$8.00
20x1.90/2.125	IB29520000	SCHRADER	93	\$8.00
26x1.50/1.75	IB59764000	PRESTA	109	\$8.00
26x1.90/2.125	IB63829000	PRESTA	125	\$8.00
26x1.90/2.125	IB63810000	SCHRADER	128	\$8.00
650x18/25c	IB51596000	PRESTA 48MM	67	\$8.00
700x18/25C	IB69839000	PRESTA 48MM	67	\$8.00
700x18/25c	IB69859000	PRESTA 60MM	68	\$8.00

- .60 MM THIN WALLS
- LIGHTWEIGHT AND DURABLE RACING TUBES
- PRESTA & SCHRADER VALVES



ULTRALIGHT TUBES



WELTER WEIGHT TUBES

SIZE	PART #	VALVE	WEIGHT	MSRP
16x1.90/2.125	IB14204000	SCHRADER	109	\$7.00
20x1 1/4/ 1 3/8	IB22991000	PRESTA	126	\$7.00
20x1.90/2.125	IB29513000	SCHRADER	130	\$7.00
24x2.125	IB49899000	SCHRADER	176	\$7.00
26x2.125	IB67681000	SCHRADER	230	\$7.00
26x1.90/2.125	IB63464000	PRESTA	178	\$7.00
29x1.90/2.125	IB96823100	PRESTA	205	\$7.00
700x18/25C	IB81555000	PRESTA 48MM	92	\$7.00
700x18/25c	IB81556000	PRESTA 60MM	93	\$7.00
700x35/45C	IB94198000	PRESTA 48MM	140	\$7.00

- .90 MM THICK WALLS
- PUNCTURE RESISTANT
- PRESTA & SCHRADER VALVES

SIZE	PART #	VALVE	WEIGHT	MSRP
26x2.20/2.50	IB67447000	PRESTA	295	\$15.00
26x2.20/2.50	IB67445000	SCHRADER	292	\$15.00

- 1.2 MM THICK WALLS
- FREERIDE SPECIFIC
- PRESTA & SCHRADER VALVES



FREERIDE TUBES



DOWNHILL TUBES

SIZE	PART #	VALVE	WEIGHT	MSRP
24x2.50/2.70	IB49960000	PRESTA	423	\$16.00
24x2.50/2.70	IB49963000	SCHRADER	420	\$16.00
26x2.50/2.70	IB68560000	PRESTA	465	\$16.00
26x2.50/2.70	IB68566000	SCHRADER	468	\$16.00

- 1.5 MM THICK WALLS
- DOWNHILL SPECIFIC
- PRESTA & SCHRADER VALVES



TIRE LEVERS

DESCRIPTION	PART #	MSRP
Tire Levers	ZT00062000	\$3.00



10X10 TENT

DESCRIPTION	PART #	MSRP
10x10 Tent	ZM70001000	\$194.00



TUMBLER

DESCRIPTION	PART #	MSRP
Tumbler	ZM20136000	\$10.00



BANNERS

DESCRIPTION	PART #	MSRP
Banner 2x4	ZB11100	\$22.00
Banner 3x10	ZB11101	\$36.00



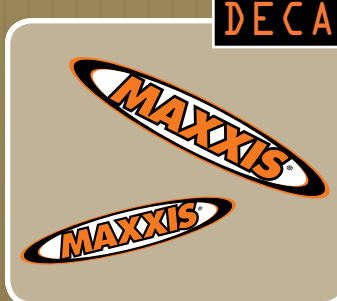
WATER BOTTLE

DESCRIPTION	PART #	MSRP
Water Bottle	ZM20124100	\$3.00



DECALS

DESCRIPTION	PART #	MSRP
Decal 24"	ZP30111	\$10.00
Decal 36"	ZP30112	\$20.00
Decal 60"	ZP30113	\$30.00



SOCKS

DESCRIPTION	PART #	MSRP
Socks Small/Medium	ZS91000003	\$7.50
Socks Large/X-Large	ZS91000005	\$7.50



BROWN ARGYLE T-SHIRT

DESCRIPTION	PART #	MSRP
Men's Small	ZS51031202	\$15.00
Men's Medium	ZS51031203	\$15.00
Men's Large	ZS51031204	\$15.00
Men's X-Large	ZS51031205	\$15.00
Men's XX-Large	ZS51031206	\$15.00
Women's Small	ZS59000402	\$15.00
Women's Medium	ZS59000403	\$15.00
Women's Large	ZS59000404	\$15.00



BLUE TIRE TRAX T-SHIRT

DESCRIPTION	PART #	MSRP
Men's Small	ZS51031302	\$15.00
Men's Medium	ZS51031303	\$15.00
Men's Large	ZS51031304	\$15.00
Men's X-Large	ZS51031305	\$15.00
Men's XX-Large	ZS51031306	\$15.00
Women's Small	ZS59000502	\$15.00
Women's Medium	ZS59000503	\$15.00
Women's Large	ZS59000504	\$15.00



NEW

HOODIE

DESCRIPTION	PART #	MSRP
Hoodie Small	ZS42030102	\$39.00
Hoodie Medium	ZS42030103	\$39.00
Hoodie Large	ZS42030104	\$39.00
Hoodie X-Large	ZS42030105	\$39.00
Hoodie XX-Large	ZS42030106	\$39.00



NAVY RACING T-SHIRT

DESCRIPTION	PART #	MSRP
Men's S/S Small	ZS51030302	\$15.00
Men's S/S Medium	ZS51030303	\$15.00
Men's S/S Large	ZS51030304	\$15.00
Men's S/S X-Large	ZS51030305	\$15.00
Men's S/S XX-Large	ZS51030306	\$15.00



CHARCOAL RACING T-SHIRT

DESCRIPTION	PART #	MSRP
Men's L/S Small	ZS51030702	\$20.00
Men's L/S Medium	ZS51030703	\$20.00
Men's L/S Large	ZS51030704	\$20.00
Men's L/S X-Large	ZS51030705	\$20.00
Men's L/S XX-Large	ZS51030706	\$20.00



CHESTNUT RACING T-SHIRT

DESCRIPTION	PART #	MSRP
Men's S/S Small	ZS52030202	\$15.00
Men's S/S Medium	ZS52030203	\$15.00
Men's S/S Large	ZS52030204	\$15.00
Men's S/S X-Large	ZS52030205	\$15.00
Men's S/S XX-Large	ZS52030206	\$15.00



PIT SHIRT

DESCRIPTION	PART #	MSRP
Pit Shirt Small	ZS50123S	\$37.00
Pit Shirt Medium	ZS50123M	\$37.00
Pit Shirt Large	ZS50123L	\$37.00
Pit Shirt X-Large	ZS50123XL	\$37.00
Pit Shirt XX-Large	ZS50123XXL	\$37.00



WHITE LOGO T-SHIRT

DESCRIPTION	PART #	MSRP
Men's S/S Small	ZS50130S	\$10.00
Men's S/S Medium	ZS50130M	\$10.00
Men's S/S Large	ZS50130L	\$10.00
Men's S/S X-Large	ZS50130XL	\$10.00
Men's S/S XX-Large	ZS50130XXL	\$10.00



BEANIE

DESCRIPTION	PART #	MSRP
Beanie	ZH24030200	\$13.00



TRUCKER HAT

DESCRIPTION	PART #	MSRP
Trucker's Hat	ZH14106	\$5.00



VISIT OUR E-STORE AT WWW.SHOPMAXXIS.COM



ROB PERKINS



CHRISTOPHER WARRICK

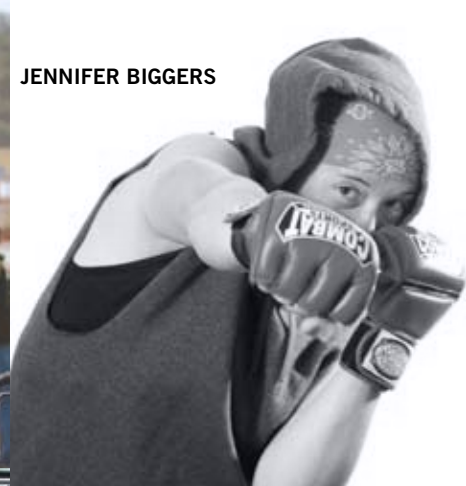


JEANA WYATT

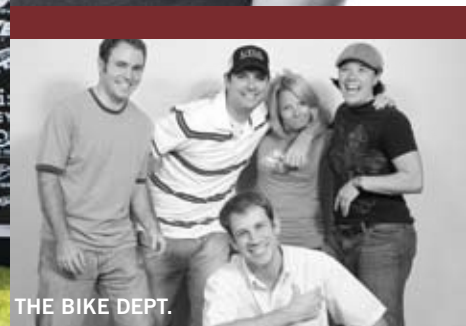




BEN BURGESS



JENNIFER BIGGERS



THE BIKE DEPT.



MAXXIS INTERNATIONAL - USA

545 OLD PEACHTREE ROAD
SUWANEE, GA 30024, USA
TEL: 1.800.4.MAXXIS
TEL: 1.770.962.8229
FAX: 1.770.962.7705

MAXXIS TECHNOLOGY CENTER - USA

480 OLD PEACHTREE ROAD
SUWANEE, GA 30024, USA
TEL: 1.678.376.4420
FAX: 1.770.822.4361

MAXXIS INTERNATIONAL - CANADA

400 CHRYSLER DRIVE, UNIT C
BRAMPTON, ONTARIO, L6S 5Z5 CANADA
TEL: 1.905.789.0882
FAX: 1.905.789.1507

MAXXIS INTERNATIONAL - GERMANY

KADDENBUSCH 31 D-25578
DAGELING, GERMANY
TEL: 49.482.189.060
FAX: 49.482.189.0670

MAXXIS INTERNATIONAL - TAIWAN

8TH FL, WORLD TRADE BUILDING
50, SEC. 1 SHIN-SHENG S. RD.
TAIPEI, TAIWAN
TEL: 886.2.2393.7451
FAX: 886.2.2341.4560



maxxis.com