

NORTHWAVE

www.northwave.it

n°5

shoes
Collection
2007



Tom
Boonen

At Tour de France 2006 with
new Aerator

ROAD • MTB • ALL TERRAIN • SPECIALS

VICTORIES

Tom Boonen



A. Valverde Belmonte



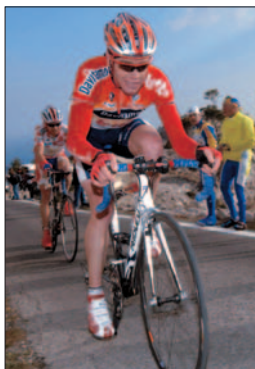
Gunn Rita Dahle



Peter Van Petegem



Cadel Evans



Josè A. Hermida Ramos



Leonardo Piepoli



Nick Nuyens



NW Pass

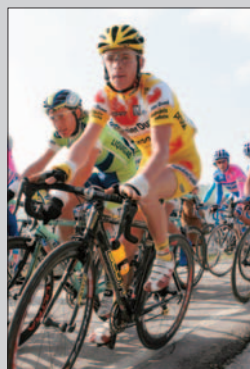


Gunn Rita Dahle



The passion is seen in your eyes and in all that you do: The passion is the push of the feet on the pedals, it is the search to better oneself and his surroundings, always and wherever. The passion moves the world, your world: your race, your work. The kilometers require new products. The muscles they burn for a supplier that is not there. Only this passion pushes you not to feel the pain. Only this passion helps you achieve success. The finish line or the friend of your friend that rides with your shoes. What would life be without passion? Passion is life, Northwave is passion.

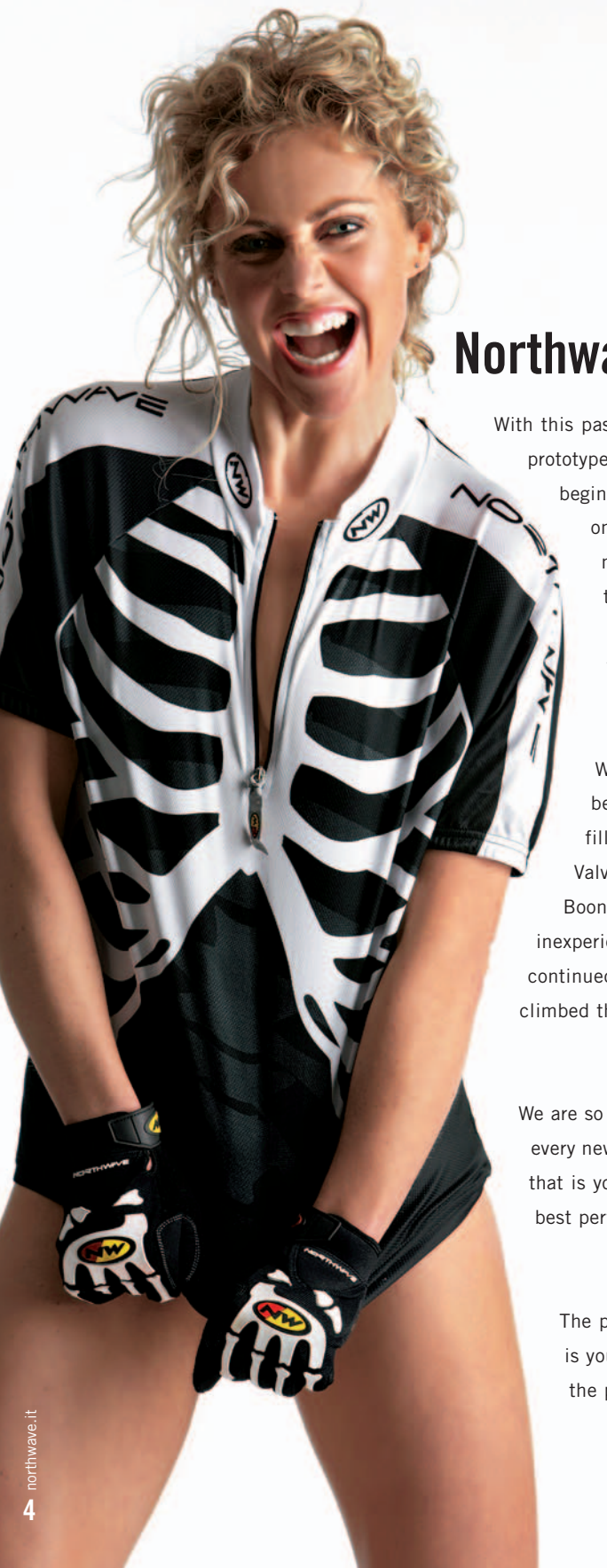
Riccardo Riccò



Michal Prokop







Northwave Passion

With this passion we began manufacturing shoes, comfortable, light and performing, prototypes and new models. We have always believed in young athletes in the beginning ranks, strangers but with that passion in their eyes. Because it is only with the passion that we find the solutions and innovative methods to make the shoes for riders and cyclists who are fascinated by their chances to achieve more. We have searched for athletes with character and grit, to live together with their passion for the bicycles and to push the pedals on the long road.

We have been fascinated by the paths of José Antonio Hermida and the beautiful victories of Gunn-Rita Dahle; We are passionate for the adrenalin-filled descents of Michal Prokop; We have seen the passion of Alejandro Valverde before he went on to win in front of Lance Armstrong; We saw Tom Boonen at Paris-Roubaix, in 2002, he was only 22 years-old, still timid and inexperienced, we remembered the passion of his pedaling, and we have continued to follow his progress, and with him we have celebrated 49 victories and climbed the podium 29 times.

We are so passionate for cycling that we have in the last years decided to confront every new challenge in front of us: to dress our athletes with a new line of apparel that is youthful and forward, but extremely technical and capable of offering the best performance.

The passion of the athletes that win with Northwave is the same passion that is you find in the products we produce and sell in the entire world, thanks to the passion of our distributors and clients.

Road Line 06

08

AERATOR RACING

09

AERATOR ³ S.B.S. - AERATOR ³

10

REVENGE - VERTIGO S.B.S.

11

VERTIGO - JACKAL - MOON

Mtb Line 12

14

AERATOR RACING MTB

15

AERATOR MTB S.B.S. - AERATOR MTB

16

KAMELEON - KAMELEON ³

17

LIZZARD - KAIMAN - SILK

All Terrain Line 18

19

GRAN CANION GTX - EXPEDITION GTX

20

GRAVITY - MISSION

21

WAVE - CLIFF

Special Line

22

TRIBAL

23

SPINN

24

MAD MAX - URBAN REVENGE

25

CELSIUS J GTX - FAHRENHEIT CR GTX



Upper

VENTILATION

NORTHWAVE has always believed in the importance of correct ventilation of the foot inside the shoe as a starting point for overall top performance.

Cyclists usually tighten up shoe closures to experience an optimal foot-wrapping feel and obtain the best performance possible in terms of power and transmission of thrust. Nonetheless, the foot tends to overheat with time and in order to avoid loss of performance, an optimal ventilation of that part of your body that transmits your thrust to the bicycle becomes a must. Research on champions and sportsmen and women of different proficiency levels has now taken shape in the **AERATOR SYSTEM** and **AIRFLOW SYSTEM** concepts.

- The **AERATOR SYSTEM** has been designed for professional use and aims for ensuring the best foot ventilation possible. The system incorporates some air inlets on the sides to avoid foot fatigue, feeling of stiffness, and consequent loss of sensitivity and power transmission. The **WEB POWER CAGE** structure, made up of overinjected grids, increases the foot's stability to ensure comfort and technical characteristics.

- The **AIRFLOW SYSTEM** concept was developed to guarantee an excellent level of ventilation and breathing to the upper-level and also for non-professional cyclists. Incorporating an extra Web Power Cage that holds the foot firmly but also lets air in and out, guarantees correct ventilation and constant performance in those long trips out on your bicycle.



Heel

A special heel counter made of injected plastic is used on all Northwave footwear. It stabilizes the heel, increases the foot's lateral grip, and prevents the shoe from slipping off.

• ULTRA Y HEEL COUNTER

This new design of heel was developed by NORTHWAVE'S R&D department, which devised a component with an exceptionally high technical level that guarantees excellent heel retention with a particularly low weight. The special Y shape embraces the heel comfortably and holds it in its natural position.

• HEEL LIFT STOP

Heel Lift Stop is a special supporting element in rigid polyurethane, which holds the heel firmly inside the shoe, to complement the Velcro closing straps.

Closing System

Northwave's R&D department has patented a new closure system: Step-by-Step. How many times have you wished to feel your shoes as part of your feet? A real cyclist knows what we mean! Most of the time, though, systems are too complicated, approximate or weather factors just don't guarantee an optimal closure.

The innovative Step-by-Step mechanism gives a precise and stabile closure of the instep strap, and a gradual release of the pressure by the special "release" button. It allows an optimal micrometric adjustment, matched with the possibility of controlling pressure release on the foot arch "step by step".

- 1 MICROMETRIC CLOSURE
- 2 RELEASE STEP BY STEP
- 3 FULL RELEASE



Sole



A complete range to meet the needs of every single cyclist, whether an amateur or a professional. All provided with the exclusive Lateral Canting System, which offers the possibility to adjust the fastener on the side to get the ideal position when pedalling and so it adapts to the anatomic features of every cyclist.



CARBON TECHNOLOGY

TLS Thin, Light and Stiff

CARBON FUNCTIONAL TECHNOLOGY: We have studied the properties of carbon intensively; the answer of our research can be summed up in: CFT, Carbon Functional Technology.

The results are:

- TLS 5 Carbon Layers sole
- TLS 3 Carbon Layers sole

• TLS 5 LAYERS CARBON SOLE

The 5 layers carbon sole, with its highdensity carbon, is truly the cutting edge of footwear technology in the world of cycling. The support bars under the foot arch, patented by Northwave, offer stiffness, resistance and ensure maximum shoe adherence to the foot, for better pedaling precision. The **LATERAL CANTING** system allows you to adjust the shoe/crank side distance.

• TLS 3 LAYERS CARBON SOLE

This carbon sole guarantees ultrarigidity and lightweight at the same time. It also allows you to customize shoe bottom/crank side distance. Minimum foot/pedal distance optimizes pedal stroke biomechanics.

Zytel Dupont TECHNOLOGY

Zytel nylon fiber, made by Dupont, is used in many sectors owing to its versatility, lightness and rigidity. The world of cycling uses this technology, too.

• NRG CARBON REINFORCED SOLE

Produced in Zytel DuPont composite fiber thermoplastic material enriched with a glass + carbon fiber layer adding to standard rigidity, it incorporates a laterally adjustable fastening system. A new design allows to maintain a short foot/pedal distance and to adjust shoe/crank distance.

• NRG SOLE

Designed to meet the requirements of the most demanding bike enthusiasts in terms of comfort and performance. Made in Zytel DuPont thermoplastic material, it incorporates a laterally adjustable fastening system. A new design allows to maintain a short foot/pedal distance and to adjust shoe/crank distance.



Footbed

To increase performance and make the fit even more comfortable, the Northwave R&D department has designed a series of anatomic arch supports that allow the cyclist to keep the right position when pedalling.

• **NATURAL LEATHER:** arch support made of natural leather, ideal for long distances. It prevents heat transfer during pedalling and ensures optimum grip inside the shoe. An arch support for professionals.

• **ANATOMIC PRO:** anatomic design that guarantees maximum comfort, with ventilation channels and holes that reduce overheating of the foot during exertion. A special island placed close to the fastener cuts vibrations transmitted by the pedal.

• **ANATOMIC PERFORMANCE:** anatomic design that guarantees maximum comfort, with ventilation channels and holes that reduce overheating of the foot during exertion.

• **AIR SPORT:** thin and lightweight, it provides sensitivity and grip inside the shoe while pedalling. The perforations increase breathability.



NORTHWAVE

code 80161003

AERATOR RACING



UPPER
AERATOR SYSTEM
WEB POWER CAGE
MICROFIBRE

SOLE
TLS CARBON 5L



CLOSING SYSTEM
S.B.S.

HEEL
ULTRA Y

FOOTBED
NATURAL LEATHER

A concentrate of technology developed in the field and devoted to professional cyclists. The exclusive ventilation system makes these shoes unique of their kind. TLS sole with 5 layers of carbon, SBS micrometric closure system, natural leather arch support. Every component has been designed to guarantee maximum performance.



col. 84 CHROME/RED
size 39 • 46 half size 39,5 • 45,5



col. 56 PEARL WHITE/BLUE
size 39 • 46 half size 39,5 • 45,5



code 80171003

AERATOR 3 S.B.S.



UPPER
AERATOR SYSTEM
WEB POWER CAGE
MICROFIBRE

SOLE
TLS CARBON 3L



CLOSING SYSTEM
S.B.S.

HEEL
ULTRA Y

FOOTBED
ANATOMIC PRO

Shoes devoted to whoever wants to distinguish himself without giving up performance. An exclusive ventilation system, carbon sole and micrometric closure system form an ideal product for competitive use.



col. 52 WHITE/RED
size 39 • 46 half size 39,5 • 45,5

col. 81 TITANIUM/BLACK
size 39 • 46 half size 39,5 • 45,5

code 80151001

AERATOR 3



UPPER
AERATOR SYSTEM
WEB POWER CAGE
MICROFIBRE

SOLE
TLS CARBON 3L



CLOSING SYSTEM
3 STRAPS

HEEL
ULTRA Y

FOOTBED
ANATOMIC PRO

This model is for those who want a more classic type of closure system but do not want to sacrifice the exclusive finish details of the Aerator style. The carbon sole and Airflow System make it a high performance shoe, even for the most demanding cyclists.



col. 57 WHITE/BLUE
size 39 • 48 half size 39,5 • 45,5



col. 10 WHITE/BLACK
size 39 • 48 half size 39,5 • 45,5



col. 52 WHITE/RED
size 39 • 48 half size 39,5 • 45,5

code 80161001

REVENGE



UPPER
AIRFLOW SYSTEM
ANATOMIC FIT

SOLE
TLS CARBON 3L



CLOSING SYSTEM
3 STRAPS

HEEL
ULTRA Y

FOOTBED
ANATOMIC PERFORMANCE

The Revenge model is a perfect blend of comfort and technical features. Its unusual upper, practically devoid of seams and perforated, favours comfort while at the same time giving the foot support. The sole with 3 layers of carbon offers optimum rigidity for whoever is looking for maximum performance.



col. 10 BLACK
size 39 • 46 half size 39,5 • 45,5



col. 50 WHITE
size 37 • 49 half size 39,5 • 45,5



col. 83 SILVER/BLACK
size 39 • 46 half size 39,5 • 45,5

code 80171004

VERTIGO S.B.S.



UPPER
AIRFLOW SYSTEM
AIRMESH

SOLE
NRG CARBON REINFORCED



CLOSING SYSTEM
S.B.S.

HEEL
ULTRA Y

FOOTBED
ANATOMIC PERFORMANCE

The special airmesh structure of the upper originates from the Airflow System concept that allows the foot to breathe, even when it is under strain. Recommended for whoever is looking for a comfortable shoe, but that has all the technical details, from the Carbon Reinforced sole to the micrometric closure system.



col. 81 TITANIUM/BLACK
size 38 • 48 half size 39,5 • 45,5



col. 51 WHITE/BLACK
size 36 • 50 half size 39,5 • 45,5



code 80171002

VERTIGO



UPPER
AIRFLOW SYSTEM
AIRMESH



SOLE
NRG CARBON REINFORCED



CLOSING SYSTEM
3 STRAPS



HEEL
ULTRA Y



FOOTBED
ANATOMIC PERFORMANCE

An ideal shoe for cycling enthusiasts who are looking for a functional and technical product. The special airmesh structure of the upper allows the foot to breathe even when under strain, whereas the triple Velcro strap closure system and injected heel counter make sure the foot is stable.



col. 10 BLACK

size 36 • 50 half size 39,5 • 45,5



col. 31 RED/BLACK

size 38 • 48 half size 39,5 • 45,5

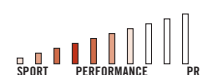


col. 21 BLUE/WHITE

size 38 • 48 half size 39,5 • 45,5

code 80161002

JACKAL



UPPER
AIRFLOW SYSTEM
AIRMESH



SOLE
NRG



CLOSING SYSTEM
2 STRAPS



HEEL
LIFT STOP



FOOTBED
AIR SPORT

Ideal for the cycling lover who is looking for the right compromise between a technical shoe and one that is comfortable. Light and with excellent ventilation, it has all of the technical details necessary for pedalling properly. The closure system and heel counter ensure proper foot support.



col. 11 BLACK/SILVER

size 36 • 48 half size 39,5 • 45,5

MOON

code 80171006



col. 22 BLUE AVIO/GREY

size 36 • 43 half size 39,5 • 42,5



col. 53 WHITE/SILVER

size 36 • 48 half size 39,5 • 45,5



MTB
CARBON RUBBER



JAWS
ZYTEL DU PONT
CARBON REINFORCED



JAWS
ZYTEL DU PONT



BD
SOLE
HIGH DENSITY

Sole



• MTB CARBON RUBBER

Certainly the most advanced sole in the Mountain Bike world. The only sole that combines the performance of lightness and stiffness of carbon with the fullest grip of natural rubber. The MTB carbon Rubber sole is the new benchmark for the most demanding mountain bikers.

• JAWS CARBON REINFORCED

A sole made of thermoplastic material enriched with carbon powder that thanks to its peculiar shape guarantees a high degree of rigidity while staying lightweight. The front end of the sole is divided into two parts: a mid-sole in fiber with added carbon powder and an outsole. The natural rubber rear part had been designed to ensure maximum grip also during descents.

• JAWS

The Jaws sole were designed after studying MTB tires to guarantee the maximum grip in extreme conditions on uphill sections, descents and all types of earth - even the most insidious.

The front end of the sole is divided into two parts: a mid-sole in fiber with added carbon powder and an outsole. The natural rubber rear part had been designed to ensure maximum grip also during descents.

• BD HIGH DENSITY

The Double Density construction system welds the natural rubber tread and the Zytel DuPont thermoplastic material + glass fiber component bottom together. Compatible with all types of Mountain Bike pedals and pre-set for front studs use. Good rigidity and excellent all-out sole grip.



Upper



VENTILATION

Northwave has always believed in the importance of proper foot ventilation as an element capable of ensuring maximum performance during sports activity. The result of its research done on champions and athletes of different levels has taken shape in the **AERATOR SYSTEM** and **AIRFLOW SYSTEM** philosophies.

- The **AERATOR SYSTEM** philosophy was studied for professional competition, and is aimed at guaranteeing as much ventilation as is possible for the foot. The **WEB POWER CAGE** structure, made up of overinjected grids, increases the foot's stability to ensure comfort and technical characteristics.
- The **AIRFLOW SYSTEM** concept was developed to ensure an optimum level of ventilation and breathability of the upper even for the amateur cyclist.

Closing System



The Northwave R&D department has patented a new closure system: the **Step by step**.

It provides:
optimum micrometric adjustment combined with the possibility to control the release of pressure on the instep "step by step".



1



2



3

- 1 MICROMETRIC CLOSURE
- 2 RELEASE STEP BY STEP
- 3 FULL RELEASE



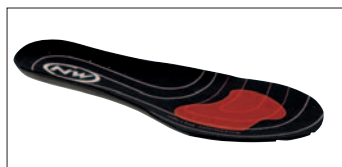
Heel



A special heel counter made of injected plastic is used on all Northwave footwear. It stabilizes the heel, increases the foot's lateral grip, and prevents the shoe from slipping off.

- **ULTRA Y HEEL COUNTER**
- **HEEL LIFT STOP HEEL COUNTER**

Footbed



To increase performance and make the fit even more comfortable, the Northwave R&D department has designed a series of anatomic arch supports that allow the cyclist to keep the right position when pedalling.

- **NATURAL LEATHER**
- **ANATOMIC PRO**
- **ANATOMIC PERFORMANCE**
- **AIR SPORT**

code **80172004**

AERATOR RACING MTB



UPPER
AERATOR SYSTEM
WEB POWER CAGE
MICROFIBRE



SOLE
MTB CARBON RUBBER 



CLOSING SYSTEM
S.B.S.



HEEL
ULTRA Y



FOOTBED
ANATOMIC PRO

Dedicated to true mountain bike lovers who want to distinguish themselves without forgoing performance. The exclusive ventilation system makes these shoes unique of their kind. The carbon sole with natural rubber tread provide rigidity and optimum grip. Its winning look accentuates the exclusiveness of this model.



col. 56 PEARL WHITE/BLUE
size 39 • 47 half size 39,5 • 45,5



code 80172003

AERATOR MTB S.B.S.



UPPER
AERATOR SYSTEM
WEB POWER CAGE
MICROFIBRE

SOLE
MTB CARBON RUBBER 

CLOSING SYSTEM
S.B.S.

HEEL
ULTRA Y

FOOTBED
ANATOMIC PRO

Footwear for real professionals. The carbon sole, rubber tread, and micrometric closure system are important details for whoever does mountain biking on a competitive level. Moreover, the special Web Power Cage not only guarantees perfect ventilation, but increases the foot's stability.



col. 31 RED/BLACK
size 39 • 47 half size 39,5 • 45,5

code 80162001

AERATOR MTB



UPPER
AERATOR SYSTEM
WEB POWER CAGE
MICROFIBRE

SOLE
MTB CARBON RUBBER 

CLOSING SYSTEM
3 STRAPS

HEEL
ULTRA Y

FOOTBED
ANATOMIC PRO

The exclusive ventilation system makes these shoes unique of their kind. The carbon sole with natural rubber tread provide rigidity and optimum grip. The three Velcro straps offers perfect closing that adapts to the shape of the foot.



col. 11 BLACK/SILVER
size 39 • 47 half size 39,5 • 45,5

code 80162002

KAMELEON



UPPER
AIRFLOW SYSTEM
ANATOMIC FIT



SOLE
JAWS CARBON REINFORCED



CLOSING SYSTEM
S.B.S.



HEEL
ULTRA Y



FOOTBED
ANATOMIC PERFORMANCE

A shoe for demanding cyclists who are looking for both technical and comfortable footwear. The special upper envelops the foot to ensure optimum stability and at the same time excellent ventilation. The sole enriched with carbon powder guarantees a high degree of rigidity and good grip thanks to the rubber tread.



col. 10 BLACK
size 38 • 47 half size 39,5 • 45,5

col. 32 RED/WHITE
size 38 • 47 half size 39,5 • 45,5

code 80162005

KAMELEON 3



UPPER
AIRFLOW SYSTEM
ANATOMIC FIT



SOLE
JAWS CARBON REINFORCED



CLOSING SYSTEM
3 STRAPS



HEEL
ULTRA Y



FOOTBED
ANATOMIC PERFORMANCE

The classic closure system with three Velcro straps and the special upper ensure optimum stability and at the same time excellent ventilation. The sole enriched with carbon powder guarantees a high degree of rigidity and good grip thanks to the rubber tread.



col. 10 BLACK
size 36 • 47 half size 39,5 • 45,5



col. 20 BLUE
size 38 • 47 half size 39,5 • 45,5

col. 52 WHITE/RED
size 38 • 47 half size 39,5 • 45,5

code 80172002

LIZZARD



UPPER
AIRFLOW SYSTEM
AIRMESH

SOLE
JAWS



CLOSING SYSTEM
3 STRAPS

HEEL
ULTRA Y

FOOTBED
ANATOMIC PERFORMANCE

The right product for those looking for a technical shoe, but do not want to give up comfort. The special structure of the upper, made of airmesh, originates from the Airflow System concept that allows the foot to breathe, even when it is under strain. The Jaws sole provides the right amount of rigidity and optimum grip.



col. 10 BLACK
size 36 • 48 half size 39,5 • 45,5



col. 31 RED/BLACK
size 38 • 47 half size 39,5 • 45,5



col. 81 TITANIUM/BLACK
size 38 • 47 half size 39,5 • 45,5

code 80162003

KAIMAN



UPPER
AIRFLOW SYSTEM
AIRMESH

SOLE
BD SOLE



CLOSING SYSTEM
2 STRAPS

HEEL
LIFT STOP

FOOTBED
AIR SPORT

A shoe dedicated to the cyclist who loves to pedal in freedom without giving up the features of a specific product. The structure of the upper is made of airmesh in order to ensure excellent ventilation, whereas the rubber tread provides optimum grip on any surface.



col. 21 BLUE/WHITE
size 38 • 47 half size 39,5 • 45,5

SILK

code 80162004



col. 24 BLUE AVIO/GREY
size 34 • 43 half size 39,5 • 42,5



col. 10 BLACK
size 34 • 50 half size 39,5 • 45,5

Bike'n Walk soles



BIKE'N WALK SOLES

This sole has been conceived and designed for double-purpose use: walking and pedaling. Its tread is made in lightweight anti-skip synthetic rubber and doesn't leave any traces on gym floors. It incorporates a Zytel DuPont nylon mid-sole with higher rigidity. Compatible with all kinds of Mountain Bike pedals, with or without quick-lock system. A rubber plate protects the stud holes when not in use.

• VIBRAM® SOLE

The Northwave R&D department tapped the technology and experience that VIBRAM® placed at its disposal to create a sole specially designed for off-road use. The special design of the tread gets rid of mud optimally, and together with the VIBRAM® compound, it guarantees maximum grip on all types of surfaces. The structure of the sole is designed for using MTB pedals and at the same time to offer the right position when walking. VIBRAM® rubber guarantees the maximum in terms of performance and durability, even in extreme conditions.

• RAID SOLE

Two-component sole with wide tread outsole in non-slip rubber and antishock polyurethane insert in the heel. The midsole with calibrated rigidity allows it to be used both to pedal and walk. The cleat attachment holes are protected by a plastic cover when not in use.

• CROSSROAD SOLE

This sole has been conceived for double purpose use: walking and pedaling. Its calibrated rigidity makes it ideal for all-purpose use. The rigidity of the arch-support is also calibrated on multifunctional professional use.

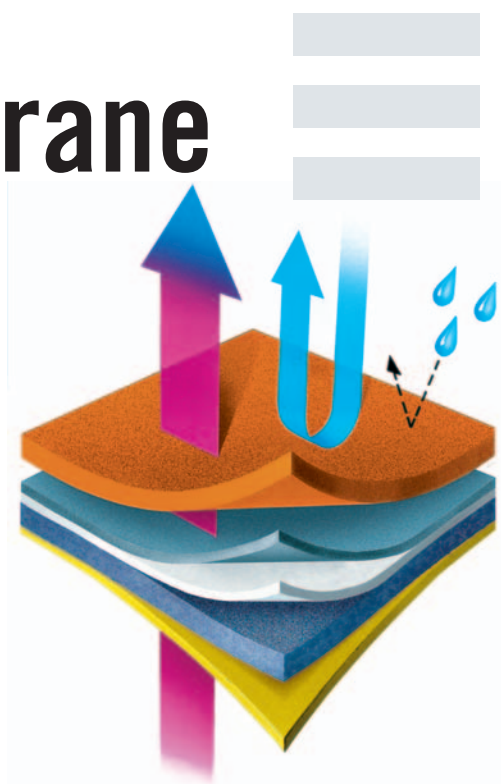


Membrane



MEMBRANE GORE-TEX® XCR®

The first All-Terrain GORE-TEX® XCR® shoe launched exclusively by Northwave guarantees all-out water protection combined with excellent breathability. As it is not thermally isolated, this membrane ensures excellent comfort in shoes to be used in spring/summer. All this means top comfort feel on the move with all weather condition. The microclimate created inside the shoe makes you confront the longest trips out without fatiguing or overheating your feet. Northwave & WL GORE winning partners when you're on the attack. GORE-TEX®, Guaranteed to Keep you dry, GORE-TEX® XCR®, Gore® and designs are trademarks of W. L. Gore & Associates.



code 80153005

GRAN CANION GTX



Designed for pedalling on all types of terrain and in all weather conditions, Gran Canion is the right product for the excursionist who wants to tackle difficult off-road trails.

The GoreTex® XCR lining insulates the foot from all atmospheric agents, guaranteeing maximum breathability and maximum performance. The sole lets you pedal both with free pedals and engaging the pedals, and is designed for walking easily when you get off the saddle. The upper offers optimum protection, and the Velcro strap provides precise closing.



col. 10 BLACK/GREY
size 38 • 47

code 80173003

EXPEDITION GTX



The Expedition model is born with an outdoor style and the technical features of a specific mountain bike shoe. The GoreTex® XCR lining insulates the foot from all atmospheric agents, guaranteeing maximum breathability and maximum performance. The ideal shoe for the cyclist who is looking for a versatile product for pedalling and walking off-road.

The particular design of the sole and the Vibram® compound provide grip and stability in all conditions, and on all types of terrain.



col. 12 BLACK/GREY
size 36 • 47

code 80163001

GRAVITY



SOLE
RAID



The unusual structure of Gravity is designed to ensure maximum protection for those riding off-road, and is ideal for freeriding. The ankle is well protected, and the inserts made of an anti-abrasion material make the shoe even more hard-wearing. The laces and Velcro strap guarantee perfect closing. The sole lets you pedal both with free pedals and engaging the pedals, and is designed for walking easily when you get off the saddle.



col. 90 BROWN
size 36 • 47

code 80173004

MISSION



SOLE
VIBRAM



Specific footwear for freeriding, with all the characteristics of a technical product. Materials better suited to the needs of cyclists who pedal off-road in the middle of dust and mud on bumpy trails were selected for the upper. The structure of the shoe provides protection and optimum closing without forgoing comfort. The toe and heel counter are well protected and the foot is well stabilized.

The Vibram® sole also lets you pedal with the shoe engaging the pedal and walk easily when you get off the saddle.



col. 12 BLACK/GREY
size 36 • 47



col. 86 ANTHRA/YELLOW
size 36 • 47

code 80173001

WAVE



SOLE
CROSS ROAD



A multipurpose shoe for using the bicycle in the city and also for outdoor excursions owing to its special rubber sole that lets you walk easily when you get off the saddle. The upper is lightweight and very comfortable, plus it offers excellent ventilation. The Velcro strap makes sure the shoe is closed right during pedalling, protecting the laces. A product designed for cycling but versatile in its use, for both those who pedal every day and those who enjoy the bicycle in complete freedom.



col. 10 BLACK
size 37 • 46



col. 90 SAND/BLACK
size 37 • 46

code 80173002

CLIFF



SOLE
CROSS ROAD



Lightweight and comfortable, ideal for whoever enjoys the bicycle in complete freedom both in the city and in the countryside. Pedalling and walking all in one shoe owing to the special sole and shoe structure. The upper is made of a soft, breathable mesh that adapts to the shape of the foot, ensuring excellent comfort.



col. 85 GREY/BLACK
size 37 • 46



EASY ENTRANCE UPPER

The upper is made of Lorica and was developed to give fast and easy entrance. This material allows to use this model without socks and also when the feet is wet. Thanks to the softness of the upper material it can also be used for long periods "as a slipper".



TLS ZYTEL DUPONT SOLE

Produced in Zytel DuPont composite fiber thermoplastic material enriched with a glass + carbon fiber layer adding to standard rigidity, it features a special construction assuring maximum performance in spite of its reduced thickness.



DOUBLE OPPOSITE STRAP CLOSING SYSTEM

This special fastening system features two opposite Velcro strips, which guarantee quick and efficient fastening also during racing. The option to customize the fastener allows good independent adjustment between the upper and lower parts of the ankle.

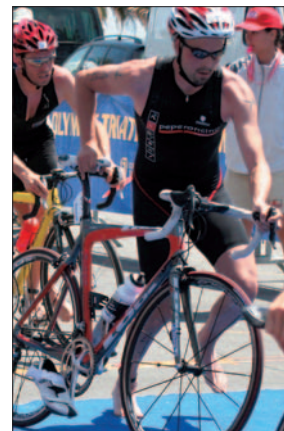


col. 50 WHITE/BLACK
size 37 • 47



TRIATHLON

Two years of research with athletes from the best teams has led to the invention of Tribal: a shoe created and developed for triathlon enthusiasts. Thanks to its simplicity, this shoe will surprise even the most exacting athlete.



CUSTOM FIT HEEL

The supporting element in rigid polyurethane has been designed specifically to be complemented by Velcro adjustment straps. Greater comfort during pedaling, guaranteed by the optimal and stable position of the heel.

GEL PAD CLOSING SYSTEM

The polyurethane gel structure, adjusted by two side straps, ensures excellent stability and comfort. The Velcro positioned on the back allows customized adjustment of the heel closure. Customized closure, without pressure points, ensures optimum comfort. Maximum foot retention for greater stability.



col. 51 WHITE/RED
size 36 • 46

HAZE ZYTEL DUPONT SOLE

The midsole in Dupont Zytel nylon, a thermoplastic material made of composite fibers, guarantees excellent rigidity to the sole. The outsole with Hi-grip pattern is made of the best synthetic rubbers. Compatible with all Mountain Bike pedals, the front part can also be fitted with studs. Increased rigidity allows energy loss to be minimized. Excellent grip on the entire sole surface. Moderate weight.



col. 11 BLACK/WHITE
size 36 • 46

SPINNING

The Spinn model continues its success as the most popular shoe for gym use and among indoor cycling enthusiasts. The special construction of the upper allows optimal ventilation of the foot and also permits use without socks. Its performance is guaranteed by the quality of the sole which is just rigid enough and constructed in non-marking rubber. The fastening gel flap adjusted by two independent velcro strips keeps the foot in place even during maximum exertion.



code 80164001

MAD MAX


SKATE UPPER

The upper's style draws its inspiration from the street and skate style. The materials used –suede and mesh– ensure utmost breathability while at the same time maintaining effective retention and protection of the foot from any blows. The inner construction of the upper is asymmetrical, and it has been designed so as to best protect the malleolus from any blows on the pedal crank in the case of disorderly landings.

PROTECTION SYSTEM CLOSING

Although it has a broad fastening system on the instep so as to retain its street identity, the Mad Max model is able to ensure an optimum and particularly high-performing closing thanks to its combination of laces and Velcro fastener. This guarantees support and optimum closing along the entire surface of the instep.

SKATE DIRT SOLE

The Skate dirt sole was developed for those who love to spend the day on dirt tracks trying out the most extreme tricks. Its skate look goes along perfectly with its features of lightness and comfort. The tread is made of natural rubber so as to offer maximum grip on the pedal's teeth. The midsole is made of soft EVA, which ensures optimum shock absorption of the knocks without penalizing its lightness.

**DIRT SKATE
RUBBER**

col. 10 BLACK
size 37 • 46


code 80164002

URBAN REVENGE


col. 10 BLACK
size 37 • 47

code 80162006

CELSIUS J GTX



FULL PROTECTION UPPER

With a GORE-TEX® membrane, the upper made in polyurethane and solid mesh net with closed meshes, is entirely lined with thermal material. A high sock in water - repellent material isolates the ankle, closed with a "Velcro" and with a protection on the malleolus.

PROTECTED LACES CLOSING SYSTEM

System with laces closed by a polyurethane cap with "VELCRO". The water - repellent sock is fastened by a "Velcro". The tongue is integrated in the shoe with a folding framing. Excellent closing all around the foot. Maximum protection against external elements.

ULTRA Y HEEL



col. 51 WHITE/BLACK
size 39 • 48 half size 39,5 • 45,5

GORE-TEX® MEMBRANE

The first GORE-TEX® shoe for winter launched exclusively by Northwave guarantees all-out water protection combined with excellent breathability. Thermically isolated, this membrane ensures excellent comfort in shoes to be used in winter.

JAWS SOLE

The Jaws sole were designed after studying MTB tires to guarantee the maximum grip in extreme conditions on uphill sections, descents and all types of earth - even the most insidious. The front end of the sole is divided into two parts: a mid-sole in fiber with added carbon powder and an outsole. The natural rubber rear part had been designed to ensure maximum grip also during descents.



col. 10 BLACK/COOL GREY
size 39 • 48 half size 39,5 • 45,5

code 80161005

FAHRENHEIT CR GTX



FULL PROTECTION UPPER

With a GORE-TEX® membrane, the upper made in polyurethane and solid mesh net with closed meshes, is entirely lined with thermal material. A high sock in water - repellent material isolates the ankle, closed with a "Velcro" and with a protection on the malleolus.

ULTRA Y HEEL

This new design of heel was developed by NORTHWAVE's R&D department, which devised a component with an exceptionally high technical level that guarantees excellent heel retention with a particularly low weight. The special Y shape embraces the heel comfortably and holds it in its natural position.

NRG SOLE CARBON REINFORCED

Designed to meet the requirements of the most demanding bike enthusiasts in terms of comfort and performance. Made in Zytel DuPont thermoplastic material, it incorporates a laterally adjustable fastening system. A new design allows to maintain a short foot/pedal distance and to adjust shoe/crank distance.



GORE-TEX® MEMBRANE

The first GORE-TEX® shoe for winter launched exclusively by Northwave guarantees all-out water protection combined with excellent breathability. Thermically isolated, this membrane ensures excellent comfort in shoes to be used in winter.

PROTECTED LACES CLOSING SYSTEM

System with laces closed by a polyurethane cap with "VELCRO". The water - repellent sock is fastened by a "Velcro". The tongue is integrated in the shoe with a folding framing. Excellent closing all around the foot. Maximum protection against external elements.



col. 10 BLACK/COOL GREY
size 39 • 48 half size 39,5 • 45,5

ROAD LINE



AERATOR RACING
PEARL WHITE/BLUE
80161003-56



AERATOR RACING
CHROME/RED
80161003-84



AERATOR 3S.B.S.
TITANIUM/BLACK
80171003-81



AERATOR 3S.B.S.
WHITE/RED
80171003-52



AERATOR 3
WHITE/RED
80151001-52



AERATOR 3
WHITE/BLUE
80151001-57



AERATOR 3
WHITE/BLACK
80151001-10



REVENGE
SILVER/BLACK
80161001-83



REVENGE
BLACK
80161001-10



REVENGE
WHITE
80161001-50



VERTIGO S.B.S.
WHITE/BLACK
80171004-51



VERTIGO S.B.S.
TITANIUM/BLACK
80171004-81



VERTIGO
BLUE/WHITE
80171002-21



VERTIGO
BLACK
80171002-10



VERTIGO
RED/BLACK
80171002-31



JACKAL
WHITE/SILVER
80161002-53



JACKAL
BLACK/SILVER
80161002-11



MOON
BLUE AVIO/GREY
80171006-22



MTB LINE



AERATOR RACING MTB
PEARL WHITE/BLUE
80172004-56



AERATOR MTB S.B.S.
RED/BLACK
80172003-31



AERATOR MTB
BLACK/SILVER
80162001-11



KAMELEON
RED/WHITE
80162002-32



KAMELEON
BLACK
80162002-10



KAMELEON 3
WHITE/RED
80162005-52



KAMELEON 3
BLACK
80162005-10



KAMELEON 3
BLUE
80162005-20



LIZZARD
TITANIUM/BLACK
80172002-81



LIZZARD
BLACK
80172002-10



LIZZARD
RED/BLACK
80172002-31



KAIMAN
BLACK
80162003-10



KAIMAN
BLUE/WHITE
80162003-21



SILK
BLUE AVIO/GREY
80162004-24



ALL TERRAIN LINE



GRAN CANYON GTX
BLACK/GREY
80153005-10



EXPEDITION GTX
BLACK/GREY
80173003-12



GRAVITY
BROWN
80163001-90



MISSION
BLACK/GREY
80173004-12



MISSION
ANTHRA/YELLOW
80173004-86



WAVE
SAND/BLACK
80173001-90



WAVE
BLACK
80173001-10



CLIFF
GREY/BLACK
80173002-85

SPECIAL LINE



TRIBAL
WHITE/BLACK
80151008-50



SPINN
BLACK/WHITE
80172001-11



SPINN
WHITE/RED
80172001-51



MAD MAX
BLACK
80164001-10



URBAN REVENGE
BLACK
80164002-10



CELSIUS J GTX
BLACK/COOL GREY
80162006-10



CELSIUS J GTX
WHITE/BLACK
80162006-51



FAHRENHEIT CR GTX
BLACK/COOL GREY
80161005-10



Northwave Bike international sales network

AUSTRIA

NORTHWAVE GMBH
Hauptstrasse 42
D-82008 Unterhaching
GERMANY
Tel ++ 49-89-6659355-20
Fax ++ 49 -89-6659355-29
email:info@northwave.de

BELGIUM/HOLLAND

ACTION SPORTS SPRL
ALLEE DES CERISIERS 25
BELGIUM
Tel. ++32 87 89 97 70
Fax. ++32 87 89 97 71
email: action.sports@skynet.be

BRAZIL

3 R FERRARO IMPORT. EXPORT LTDA
RUA RUI BARBOSA 1236 SL 03 CENTRO
85852 - 120 FOZ DO IGUAÇU - PARANA
BRAZIL
Tel. ++55 45 3523 7445
Fax. ++55 45 3523 8719
3rferraro@brturbo.com

CANADA

3454240 CANADA INC.
3565 JARRY EAST, SUITE 507
H1Z 4K6 MONTREAL QUEBEC
Tel. ++001514 387 4090
Fax ++ 001 514 387 1534
northwave@logica.ca

CROATIA

CIKLO-CENTAR D.O.O.
JURJA VES 30A
10 000 ZAGREB
CROATIA
Tel. ++385 (0)1 2342224
Fax. ++385 (0)1 2343422
email: ciklo-centar@ciklo-centar.hr

CZECH REPUBLIC

LOM TRADING SPOL S.R.O.
POD JAROVEM 2035/26
130 00 PRAHA 3
CZECH REPUBLIC
Tel. ++420 27 4819287
email: lomtrading@lomtrading.cz
info@lomtrading.cz

DENMARK

HF CYKLER A/S
HVIDEMOLLEVEJ 9-11
8900 RANDERS
DENMARK
Tel. ++45 89 14 14 14
Fax. ++45 89 14 14 16
email: kbr@hf-c.dk

ESTONIA

OU CCC
RUMMU TEE 3
TALLINN 11911
ESTONIA
Tel. +372 6238776
Fax +372 6237132
email : rattapood@solo.ee

FRANCE

SPORT PULSION
P.A.E DE LA CAILLE
74350 ALLONZIER LA CAILLE
FRANCE
Tel. ++33 (0)450465460
Fax. ++33 (0)450465051
email: bike@sportpulsion.fr

GERMANY

NORTHWAVE GMBH
Hauptstrasse 42
D-82008 Unterhaching
GERMANY
Tel ++ 49-89-6659355-20
Fax ++ 49 -89-6659355-29
email:info@northwave.de

HUNGARY

BIKE ART CENTER KFT.
CSALOGÁNY UTCA 23-33
H-1027 BUDAPEST
HUNGARY
Tel. +36 1 225-3642
Fax. +36 1 225-3643
info@bikeart.hu

GREECE

GATSOUKIS IMPORTS
26 VITINIS STR.
NEW PHILADELPHIA 143 42
ATHENS GREECE
Tel. ++030 210 2530412
Fax. ++30 210 2533960
email: gatsoulis@gatsoulis.gr

IRELAND

J.HUMPHRIES
8 FINGLAS BUSINESS CENTRE,
JAMESTOWN ROAD
FINGLAS, DUBLIN 11 IRELAND
Tel./fax: 00353 18342170
email: jhi@indigo.ie

JAPAN

FUNFANCY CO., LTD
3-30, Kitazono, Itami-shi, Hyogo
664-0891 JAPAN
Tel. ++ 81-72-785-9525
Fax ++ 81-72-785-9527
email: katsu@funfancy.co.jp

KOREA

MBS CORPORATION
37-7 Pal Yong Dong, Chang Won City
KOREA
Tel. ++ 82-55-265-9415
Fax ++ 82-55-265-9419
email: kbcco@kornet.net

LETTONIA

ZZK
DZELZAVAS 47
RIGA
LATVIA
Tel. ++371 7 703258
Fax. ++371 7703258
email: zzk@zzk.lv

MALTA

MUSCATS IMPORTS LTD
56 TRIQ IS-STAZZJON
B'KARA BKR12
MALTA
Tel. ++356 2122 7265
Fax. ++356 2122 7265
email: musco@global.net.mt

NEW ZEALAND

FIL IMPORTERS
94 COLERIDGE ST PO BOX 19783
8030 CHRISTCHURCH NEW ZEALAND
NEW ZEALAND
Tel. ++64 3 348 3952
Fax. ++64 3 348 3962
email: info@fil.net.nz

NORWAY

STIANS SPORT AS
Aslakveien 20d
P.O Box 123 Roa
0701 Oslo
NORWAY
Tel. +47 22 51 55 00
Fax. +47 22 51 55 01
email: office@stians-sport.no

POLAND

BIKERSHOP SP.J.
31-126 KRAKOW,
UL. CZARNOWIEJSKA 6
POLAND
Tel. ++48 12 423 32 62
Fax. ++48 12 623 76 70
email: northwave@northwave.pl

PORTUGAL

VIEIRA GRACA & C. LDA
LARGO DO TEATRO N° 37
2200-032 ALFERRAREDE
PORTOGGALO
Tel. ++351 241 371766
Fax. ++351 241 371902
email: vieira.graca@iol.pt

RUSSIA

PERFORMANCE SPORT
16/2 OLYMPOISKY PROSPECT
129110 MOSCOW
T 007 095 937 28 14
FAX 007 095 785 05 76
ivko@trial-sport.ru

RUSSIA

VELOMARKET CSKA
39 LENINGRADSKY PROSPECT
125167 MOSCOW
RUSSIA
Tel. FAX ++ 7 495 6132938
email: sergey@velomarket-cska.ru

SLOVAKIA

ZANZO S.R.O.
VLCIE HRDLO 20
821 07 BRATISLAVA 214
SLOVAK REPUBLIC
Tel. +421 2 4552 37 21
Fax. +421 2 4564 0294
email: info@zanzo.sk

SLOVENIA

PROLOCO TRADE D.O.O.
ZG. JEZERSKO 139
4206 JEZERSKO
SLOVENIA
Tel. ++386 4 280 2000
Fax. ++386 4 280 2022
email: info@prolocotrade.si

SPAIN, ANDORRA

VIC SPORTS AFERS S.L.
C.TRA D'LOT, 9
17179 RIUDAURA GIRONA
SPAGNA
Tel. ++34 972 268299
Fax. ++34 972 272287
email: vicsports@vicsportsafers.es

SWITZERLAND

PLATTS (EUROPE) Ltd.
Case Postale 1293
2501 Biel-Bienne
SUISSE
Tel++ 41 323 313101
Fax++ 41323313104
email: info@platts.ch

SOUTH AFRICA

Cycling J&J (Pty) Ltd
169 MEERLUST STREET
WILLOW GLEN, PRETORIA
SOUTH AFRICA
Tel. ++27 12 807 5570
Fax. ++27 12 807 4267
email: jr@jjcycling.co.za

TAIWAN

LEE DUO TRADING CO., LTD.
1FL, NO. 106, YUNG JEN RD
YUNGHO CITY 234 TAIPEI HSIEN
TAIWAN
Tel. ++886 2 2231 0599
Fax. ++ 886 2 2232 5615
leeduo.tw@msa.hinet.net

THAILAND

ADVENTURE EQUIPMENT ASIA CO., LTD
SUKHUMVIT 26 ROAD
10110 BANGKOK
THAILAND
Tel. +66 (0)2 261 5717
Fax.+66 (0)2 261 5714
email: Bikestuff@AE-Asia.com

TURKEY

DELTA BISIKLET LTD
BOSNA HERSEK CAD 21/D
06510 EMEK ANKARA
TURKEY
Tel. ++ 90 312 2236027
Fax. ++ 90 312 2223492
email:info@deltabisiklet.com

UKRAINE

MTB UKRAINE
31,DEGTYARIVSKA ST
3680 UKRAINE
Tel. ++ 380 44 483 8120
Fax. ++ 380 44 483 6585
victor@mtb-ukraine.com

USA

NORTHWAVE NORTH AMERICA
400 north 34 st-suite 203
Seattle, WA 98103
T. ++1 206 762 2955
F. ++1 206 762 2977
brent@northwave.com

UNITED KINGDOM

JIM WALKER & COMPANY Ltd.
13 APEX PARK, HAILSHAM
EAST SUSSEX BN27 3JU UK
Tel. ++44 870 7528777
Fax. ++44 01323 845849
email: INFO@JIMWALKER.CO.UK