



www.ovalconcepts.com



Sponsored Teams and Athletes

Pro Tour Team:



Continental Teams:

Navigators Insurance
TIAA CREF
Sean Kelly
Sotheby's

Professional Triathletes:

Torbjorn Sindballe
Alex Taubert
Michellie Jones
Belinda Granger

Women's Teams:

Lipton TEAm
Palo Alto Women

Professional Track:

Dutch National Team
Jens Mourie
USA National Team
Colby Pierce
New Zealand National Team

CycloCross:

Richard Sachs



You can't beat the Swiss for efficiency and precision. They invented precision time-keeping, after all, in a decades-long process of continuous refinement. In their relentless quest for perfection the Swiss have embraced new materials and technologies, like titanium cases and quartz movements, but with function foremost (Rolex, for instance, does not switch to carbon fiber unless it's a functional advancement). This functional design sense is what drives us, here at Oval Concepts. Being located in the Swiss Alps, we're surrounded by it.

As founder, I bring American ingenuity to Oval's product design. Our products are on the cutting edge of materials science and technology know-how, designed by some of the sharpest minds in bicycle racing technology.

We're near the Swiss-Italian border, so we're immersed in the cycling-rich folklore of Italy. This is a place where the sport's passions and traditions are truly legend, and where good old-fashioned bike fit is still held in high regard. This is the culture we surround ourselves with. This is our passion.

Oval's designs are guided by this unique blend of passion, tradition, technology and design know-how. It's a forward-thinking approach that reveres the past, while pushing today's limits. It makes us different. It makes us better. See for yourself.

*Morgan Nicol
Founder, President*

TABLE OF CONTENTS Page

Table on Contents	1
Fit to Fly	2
Aero Introduction	3
A911 JetStream Aero Bar	4-5
JetStream Aero Forks	6
Aero Brakes	7
A900 Carbon Aero Bars	8-9
A700 Alloy Aero Bars	10-11
Clip-On Bars	12-13
Road Introduction	14
JetStream Road Fork	15
Road Bars	16-17
Road Stems	18-19
Road Seat Posts	20
Accessories & Small Parts	21
Mountain Stems	22
Mountain Posts	23
Riser Bars	24
Flat Bars & Bar Ends	25

Fit to Fly

The most critical aspect of cycling performance isn't frame material, the number of gears available or the heft of your bike. It's how you fit your bicycle.

The right position minimizes aerodynamic drag, while maximizing comfort and biomechanical efficiency. Without it you'll never achieve your full potential, no matter how light, expensive or fancy your equipment.

We maximize your efficiency, in every aspect. Our bars, stems and seatposts allow proper adjustment of the bicycle's three contact points—hands, feet and body—for the absolutely perfect fit you deserve. Our aero bars and fork exploit years of wind tunnel test data to give you the slickest form possible, turning every milliwatt of energy you muster into speed.

We have created upgrade kits for our aero bars and stems to shave every gram, transfer each newton of torque, nurture each beat of your heart and chisel away every iota of drag. We went to Italy, Spain, Greece, Sweden and the USA to test our theories and our products. We were rewarded with la maglia rosa, el jersey oro, a gold medal and a world champion.

Whether you ride on a road racer, an aero machine or a mountain bike, Oval components will maximize your potential. You spend countless hours training, and hundreds of dollars on your equipment. Get Oval Concepts components, and get the most out of what you put in.



You might think you're racing the other guys, but aerodynamic drag is the real foe. At racing speeds, over level ground, more than 90 percent of your effort is spent pushing the air out of the way. And, sad to say, about 70 percent of that drag comes from your body. Positioning is critical, and for that your handlebar is key.

Oval Concepts' aero bars position your body in the best wind-cheating posture, while our unique Jetstream fork's revolutionary airflow management technology offers a dramatic reduction in front wheel drag.

Both sprang from the mind of one of the world's foremost cycling aerodynamics experts, a man whose work has been instrumental in keeping America's favorite road racer dressed in yellow for the past five years.



Giro 2004



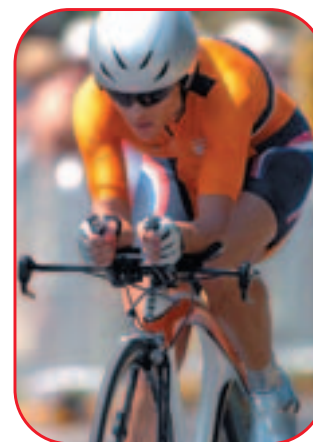
Giro 2005



Vuelta 2005

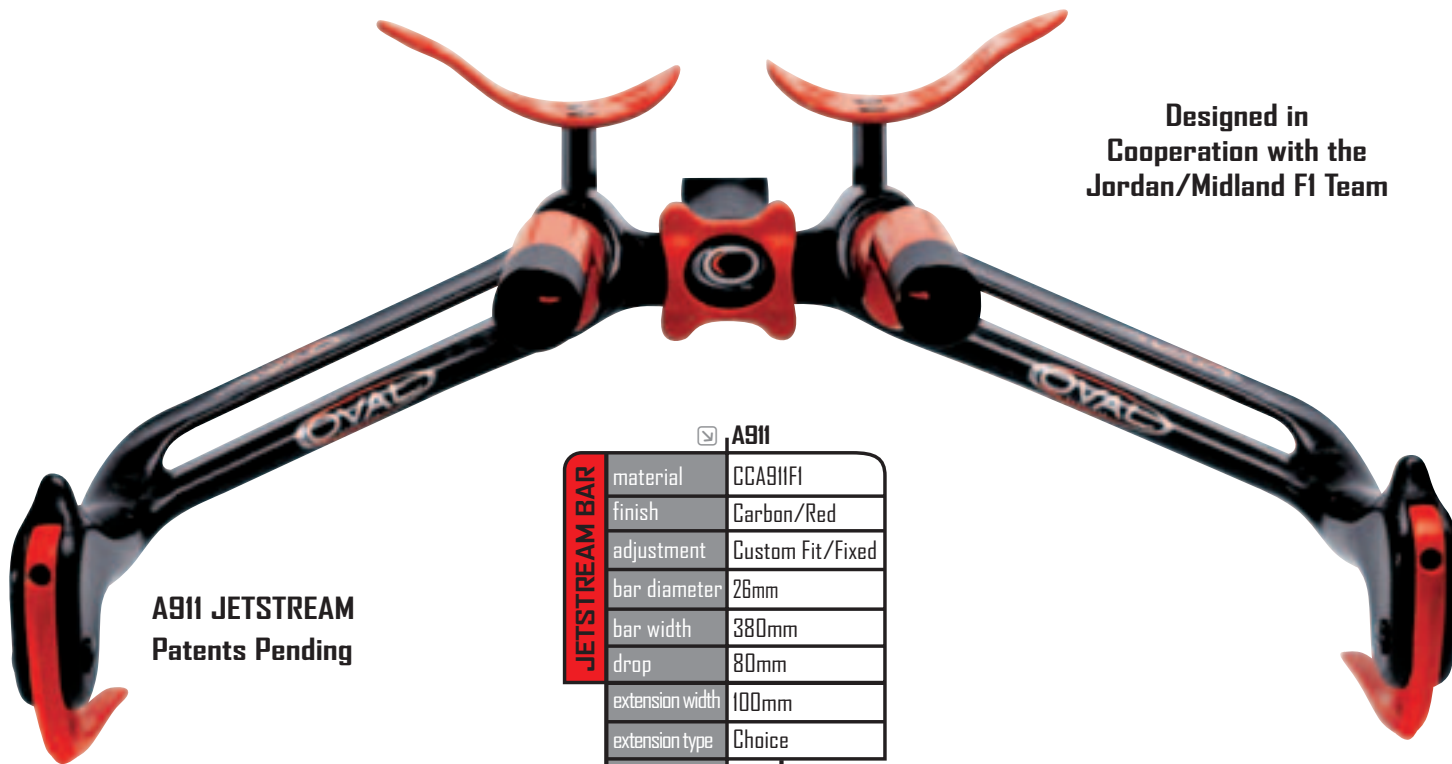


Kona 2005



Athens 2004





A911 JETSTREAM
Patents Pending

▼ A911

JETSTREAM BAR	material	CCA911FI
	finish	Carbon/Red
	adjustment	Custom Fit/Fixed
	bar diameter	26mm
	bar width	380mm
	drop	80mm
	extension width	100mm
	extension type	Choice
	weight	550g

* Order forms at www.ovalconcepts.com

* Order direct at info@ovalconcepts.com

Designed in
Cooperation with the
Jordan/Midland F1 Team

AERO



AERO

Utility Patents

US 10/366,760
EU 1 338 499
JP 2003-37330
TW 92102999
CN 03121774.5

Design Patents

US 29/180,554
EU 16696-0001



AERO FORK	☑ A900		T900
	material	CCA900PP	CCT900PP
	steerer	Carbon	Alloy
	wheel size	700 650	700
	rake length	44 40	35
	steerer	25.4 or 28.6x300mm	25.4 or 28.6x300mm
	weight	495/465g	595g

A900 JetStream AERO FORK



T900 JetStream TRACK FORK



Front View



Rear View

A700 AERO FRONT BRAKE



Side View



A700 AERO REAR BRAKE





A900 UPGRADE



CARBON AERO BARS

☑ A900 UPGRADE A900 STOCK

material	CCA900PP	CCA900PP
finish	Carbon/Red	Carbon
adjustments	11,520	2880
bar diam	26mm	26mm
drop	10mm	10mm
widths	42cm	42cm
weight	825g	895g



A900 STOCK



A900 CARBON PAD HOLDERS

A900 CARBON BRAKE LEVERS



THREE PAD THICKNESSES



A900 OVAL ARM REST PADS



A900 EXTENSIONS



DOUBLE BEND



SINGLE BEND



S-BEND



STRAIGHT



A700 UPGRADE



Stem & Brake Levers are not included



A700 UPGRADE A700 STOCK

material	CAA700W	CAA700W
finish	BB Black	BB Black
adjustments	1760	480
bar diam	26.0mm	26.0mm
drop	10mm	10mm
widths	42cm	42cm
weight	675g	775g

A900 STOCK

Brake Levers are not included

A700 CARBON BRAKE LEVERS

A700 ALLOY BRAKE LEVERS

A700 OVAL ALLOY PAD HOLDER

A700 STANDARD ALLOY PAD HOLDER

THREE PAD THICKNESSES

A900 OVAL ARM REST PADS

A900 STANDARD ARM REST PADS

A700 EXTENSIONS

DOUBLE BEND

SINGLE BEND

S-BEND

STRAIGHT



Shown with:

- R900 Carbon Road Bar
- R700 Reverse Bolt Stem

A910 SuperLite Clip-On





A700 SLAM Clip-On



Shown with:

- A700 Cowhorn Bar

	☑ A910	A710	A700 SLAM
material	CCA910PP	CAA710	CAS700S
finish	Carbon	BB Black	BB Black
adjustments	240	240	240
bar diam	26.0 or 31.8mm	26.0 or 31.8mm	26.0 & 31.8mm
drop	NA	NA	NA
widths	NA	NA	NA
weight	295g	395g	475g



Shown with:

- A700 Road Bar



It all boils down to position. Italy's famed framebuilding tradition wasn't founded on custom technology, but custom fit. The Italians understood the value of it early on, and they've been a cycling superpower ever since.

The right fit maximizes power and comfort, and reduces aerodynamic drag. For this, the handlebar, stem and seatpost are critical, especially with the current trend toward compact frames, ultra low-stack headsets and smaller sizing runs.

Some component makers limit you to just a few stem lengths and angles, one or two handlebar bends and very coarse seatpost adjustments, in order to save weight or create a unique look. But that comes at the expense of speed and comfort, which is what really matters.

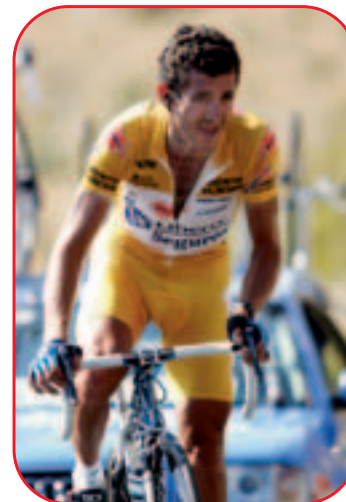
Our components are made in a full range of sizes and ergonomic shapes, with precision adjustment worthy of a Swiss timepiece, and craftsmanship and materials that are truly aerospace grade. We want you to experience the power of proper fit, and stretch the limits of your own potential.



TOUR 2005



JCTDU 2005



VUELTA 2005



📄 **R900**

ROAD FORK	material	CCA900PP
	finish	Carbon
	rake length	44mm
	wheel size	700mm
	steerer	28.6x300mm
	weight	425g

**R900 JetStream
ROAD FORK**

Utility Patent

US 10/366,760

EU 1 338 499

JP 2003-37330

TW 92102999

CN 03121774.5

Design Patents

US 29/180,554

EU 16696-0001



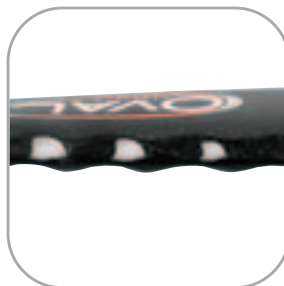
R910 AERGO
With ICR*

AERGO ROAD BARS	R910	
	material	CCR910PP
	finish	Carbon
	bar diam	26.0/31.8
	drop	135mm
	reach	75mm
	widths	40,42,44mm
	weight	240g

* Internal Cable Routing

R910 AERGO

- Seamless one-piece carbon construction
- Integrated Kevlar "Airbag"
- Very strong, safe bar






CLASSIC BEND

ERGO BEND

R950
Ergolite

			R950	R900	R700	R701	R500	R300			
ROAD BARS	material	CCR950PP		CCR900PP		CAR700T		CAR500T		CAR300D	
	finish	Carbon		Carbon		BB Black		BB Black		BB Black	
	bend	Ergolite		Ergolite		Ergo		Classic		Ergo	
	bar diam	26.0/31.8mm		26.0/31.8mm		26.0/31.8mm		26.0mm		26.0/31.8mm	
	drop	150mm		150mm		144/135mm		144/135mm		144mm	
	reach	75		75		77/89		77/89		77	
	widths	40,42,44cm		40,42,44cm		38,40,42,44cm		40,42,44cm		40,42,44cm	
	weight	180g		210g		219g		219g		265g	
									295g		

R900/R950

- Seamless one-piece carbon construction
- Integrated Kevlar "Airbag"
- Very strong, safe bar



ROAD SERIES

ROAD SERIES BARS / STEMS / SEATPOSTS / FORK S

17



Reverse Bolt Technology Stems

R700 Silver/Stock

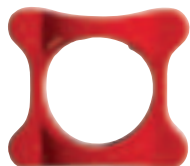


R700 Black/Upgrade

- **RBT®** eliminates fatigue failure at front cap
- **Triple DIN** tested for max. strength
- **Marine Stainless Steel** bolts for reliability and no rust



R900 UPGRADE KIT



Reverse Bolt Technology Stems



R710 Adjustable



bias cut

	R700 UPGRADE	R700 STOCK	R710 ADJUSTABLE	R500	R300
material	CAR700N PLUS	CAR700N	CAR710N	CAR500N	CAR300N
body/cap	BB Black/Red Carbon Pearl Silver/Carbon	BB Black/Pearl Silver Pearl Silver/BB Black	BB Black/Pearl Silver	BB Black/Pearl Silver	BB Black/BB Black
bolts	Titanium w/Loctite	Marine SS w/Loctite	Marine SS w/Loctite	Chromoly	Chromoly
26.0 / 73°	80-130mm	80-130mm	95,110,125,140mm	80-120mm	90-120mm
26.0 / 84°	80-150mm	50-150mm	—	80-120mm	90-120mm
31.8 / 84°	80-130mm	80-130mm	—	80-120mm	90-120mm
steerer	28.6mm	28.6mm	28.6mm	28.6mm	28.6mm
weight	100/110g	120/135g	160/250g	145/155g	160g



	☑	R910	R710	R700	R500	R300
ROAD SEATPOSTS	material	CCR910PP	CAR710N	CAR700N	CAR500N	CAR300N
	finish post/clamp	Carbon/Pearl Silver	BB Black/Pearl Silver Pearl Silver/BB Black	BB Black/Pearl Silver Pearl Silver/BB Black	BB Black/Pearl Silver	BB Black/BB Black
	prod. post/clamp	Carbon/Forged	3D Forged	3D Forged	3D Forged	3D Forged
	offset	10-50mm	10-50mm	25mm	25mm	25mm
	length	280mm	280mm	280/400mm	280mm	280mm
	diameter	27.2mm	27.2mm	26.8-27.2/ 30.9-31.8/32.4mm	26.8-27.2/ 30.9-31.8mm	26.8-27.2mm
	weight	190g	205g	185/205g	210/230g	250g

R910
Aergo



R710
Aergo



R700
Ergo



R

DIAD

R900 BAR TAPE



**R900 CARBON TOP CAP
WITH TI BOLT**



R700 STEM SHIM



R900 FORK EXPANDER



1"



1- 1/8"



ROAD SERIES

ROAD SERIES BARS / STEMS / SEATPOSTS / FORKS

Reverse Bolt Technology Stems



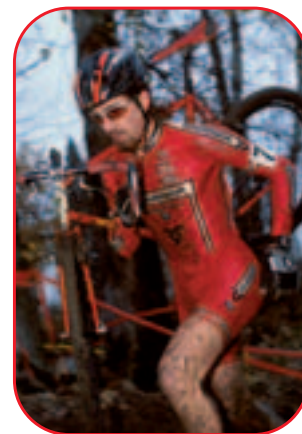
M600 STOCK

M600 UPGRADE



- **RBT®** eliminates fatigue failure at front cap
- **Triple DIN** tested for max. strength
- **Marine Stainless Steel** bolts for reliability and no rust

	M600 UPGRADE	M600 STOCK	M400	M200
MTB STEMS				
material	CAM600N PLUS	CAM600N	CAM400N	CAM200N
body/cap	BB Black/Red Carbon	BB Black/Pearl Silver	BB Black/Pearl Silver	BB Black/BB Black
bolts	Titanium w/Loctite	Marine SS w/Loctite	Chromoly	Chromoly
25.4 / 6"	80-130mm	80-130mm	90-120mm	90-120mm
25.4 / 17°	80-130mm	80-130mm	90-120mm	90-120mm
31.8 / 6"	80-130mm	80-130mm	90-120mm	90-120mm
steerer	28.6mm	28.6mm	28.6mm	28.6mm
weight	100/110g	120/135g	145/155g	160g



Red in USA



	☑	M810	M610	M600	M400	M200
MTB SEATPOSTS	material	CCM810PP	CAM610N	CAM600N	CAM400N	CAM200N
	finish post/clamp	Carbon/Pearl Silver	BB Black/Pearl Silver	BB Black/Pearl Silver	BB Black/Pearl Silver	BB Black/BB Black
	prod. post/clamp	Carbon/Forged	3D Forged	3D Forged	3D Forged	3D Forged
	offset	10-50mm	10-50mm	25mm	25mm	25mm
	length	350mm	400mm	400mm	400mm	400mm
	diameter	27.2mm	27.2mm	26.8-27.2/ 30.9-31.8/32.4mm	26.8-27.2/ 30.9-31.8mm	26.8-27.2/ 30.9-31.8mm
	weight	190g	230g	220/240g	255/275g	295/315g



Gold in Canada

M810
Aergo



M610
Aergo



M600
Ergo



T800

T600

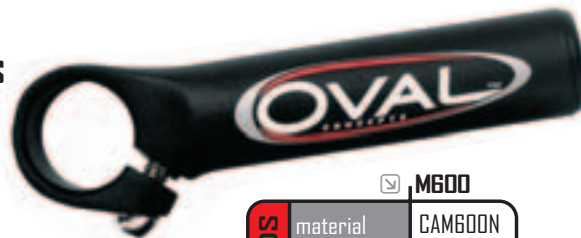
T600

	T800		T600		T400	T200
material	CCT800PP		CAT600T		CAT400T	CAT200D
finish	Carbon		BB Black		BB Black	BB Black
stem ø	25.4mm	31.8mm	25.4mm	31.8mm	25.4mm	25.4mm
rise	20mm	50mm	20,35,65mm	20,35mm	35mm	45mm
grip ø	22.2mm	22.2mm	22.2mm	22.2mm	22.2mm	22.2mm
length	660mm	660mm	660mm	660mm	660mm	680mm
weight	175g	185g	220/230/250g	270/250g	280g	310g



Red in Switzerland

M600 BAR ENDS



MTB FLAT BARS	M800		M600		M400	M200
	material	CCM800PP	CAM600T		CAM400T	CAM200D
	finish	Carbon	BB Black		BB Black	BB Black
	stem ø	25.4mm 31.8mm	25.4mm 31.8mm	25.4mm	25.4mm	25.4mm
	rise	5° 5°	5° / 12° 5°	5°	5°	5°
	grip ø	22.2mm 22.2mm	22.2mm 22.2mm	22.2mm	22.2mm	22.2mm
	length	550mm 550mm	550mm 550mm	580mm	580mm	580mm
	weight	125g 130g	123 / 143g 148g	140g		175g

BAR ENDS	M600	
	material	CAM600N
	finish	BB Black
	bend	10°
	length	100mm
	weight	95g

M800

M600

M600

Rings in Greece



Oval Concepts Distributors

<i>Argentina</i>	<i>Action Sports</i>
<i>Australia</i>	<i>Dirt Works Australia</i>
<i>Austria</i>	<i>Import Grill</i>
<i>Belgium</i>	<i>Action Sports</i>
<i>Canada</i>	<i>Great Western</i>
<i>China</i>	<i>J&C International</i>
<i>Czech</i>	<i>CZ Cursor</i>
<i>Denmark</i>	<i>Tokind A/S</i>
<i>Finland</i>	<i>Toiminini Tero Penttinen</i>
<i>France</i>	<i>Blue Caps</i>
<i>Germany</i>	<i>Cosmic Sports</i>
<i>Greece</i>	<i>Kinisi</i>
<i>Hungary</i>	<i>Cseke</i>
<i>Ireland</i>	<i>Bua Sports</i>
<i>Italy</i>	<i>ROI S.r.l.</i>
<i>Japan</i>	<i>Aki Corp.</i>
	<i>TriSports</i>
<i>Kenya</i>	<i>Tyre Kaya</i>
<i>Malaysia</i>	<i>Entro Cycles</i>
<i>Netherlands</i>	<i>Frame Works</i>
	<i>Cosmic Sports</i>
<i>New Zealand</i>	<i>Sheppard Industries</i>
<i>Norway</i>	<i>Energy Sport</i>
<i>Phillippines</i>	<i>YKK</i>
<i>Singapore</i>	<i>Entro Cycles</i>
<i>South Africa</i>	<i>Bicicletta</i>
<i>Sweden</i>	<i>Tokind A/S</i>
<i>Switzerland</i>	<i>Oval Concepts SA</i>
<i>Taiwan</i>	<i>J&C International</i>
<i>Ukraine</i>	<i>Magellan Ltd.</i>
<i>U.K.</i>	<i>Upgrade</i>
<i>USA</i>	<i>Quality Bicycle Products</i>
	<i>KHS Bicycles</i>
	<i>BTI Ltd.</i>
	<i>PCPNY</i>
<i>Zimbabwe</i>	<i>Tyre Kaya</i>



SWISS QUALITY | AMERICAN TECHNOLOGY | ITALIAN FLAIR



www.ovalconcepts.com info@ovalconcepts.com tel+41 (91) 994.6909 fax +41 (91) 994.6908