

**S-WORKS 2008**







S-WORKS EARNS THE RAINBOW

STRIPES **TWICE** AGAIN

*Our S-Works division was created over 15 years ago specifically to meet the needs of the world's most demanding athletes.*

**WORKING WITH THE BEST TALENT IN THE WORLD** has provided us the opportunity to focus on the rider's need for functional and technically advanced products that provide a performance benefit.

Whether it is Paolo Bettini racing the S-Works Tarmac SL2 to his second consecutive World Championship on the road, Christoph Sauser piloting his S-Works Epic to the MTB Marathon World Championship, or Chris "Macca" McCormack winning Ironman Hawaii on his S-Works Transition, S-Works bikes and equipment have a decades-long history of achievement. Bettini, Sauser and Macca are now in the company of Cipollini, Overend, Stoltz, Reid, Bowden, Fullana and Fürst—outstanding athletes that, over the years, have ridden their S-Works bikes to victory at the highest level.

What we learn from them we proudly offer to you: the best-of-the-best products built for champions and all riders who demand performance, quality, and innovation without compromise.

*Mike Linigand*



YOUR NEXT RIDE SHOULD BE

## BETTER THAN YOUR LAST

*As lofty as it sounds, it's our vision to be the best cycling brand in the world. So we dream, design and build all kinds of products that help you enjoy your time on a bike more.*

**STARTING BACK IN THE 1970'S**, we realized that working closely with top professional riders was a great way to find out how our products were standing up and how we could make them better. Our relationship with top professional cyclists—including road and off-road world champions, Tour de France stage winners and Olympic medalists—has helped us continually improve the quality and performance of each and every one of our products.

*To compliment the data that the world's best riders give us, we've developed one of the world's foremost testing facilities in our Morgan Hill, California headquarters. Our staff of engineers and technicians monitor countless hours of bending, breaking and smashing to ensure that every frame, component and piece of equipment delivers world class performance and top-level safety.*

*The next time you're out on the road or trail, you probably won't be thinking about what could make your next ride better. That's OK, because we will.*





# FIT 2.0

With our proprietary BG FIT DATA (Dual Angle Technical Assessment) system, a trained Specialized dealer can help you ride faster, longer and in greater comfort.

**IN ORDER TO INCREASE THE ACCURACY AND REPEATABILITY** of the BG FIT process, the fit experts at Specialized and Dr. Andy Pruitt EdD, PA of the Boulder Center for Sports Medicine have developed BG FIT DATA, a proprietary motion capture software and fit assessment process. DATA allows a BG FIT technician to capture any rider's pedaling motion on video, perform a quantitative assessment and implement changes to the rider's position. There's no better way to ensure an efficient and comfortable bike fit than BG FIT DATA.

During your fit assessment, a BG FIT technician will use DATA's dual-camera set-up and advanced drawing and measurement tools to accurately measure and record key variables that affect your ride such as back, knee and ankle extension. After the technician makes the necessary adjustments to optimize your fit, you'll quickly realize a more efficient, more comfortable ride, every time you ride.

Use the Dealer Locator at [www.specialized.com](http://www.specialized.com) to schedule a BG FIT biomechanical analysis at a BG FIT trained dealer near you.





# THE SPECIALIZED **RIDERS CLUB**

*Join The Family; Get More From Every Ride*

**THE SPECIALIZED RIDERS CLUB** was created to help all types of cyclists get more from every ride. Members of the Specialized Riders Club are united by their passion for the experience of riding and the culture that surrounds our sport. The Specialized Riders Club connects members with other riders, events, races, trips and advocacy efforts.

Thanks to a collection of unique benefits, including the ability to meet and ride with other members, an annual Riders Club membership kit, a members-only website, access to once-in-a-lifetime trips, great contests and the ability to demo new products, the Specialized Riders Club will help you get more from every ride.

Join the club and connect. **Let's ride!**

In 2008, all S-Works bicycles will come with a complimentary Riders Club Premium membership good for one year. Find out more at [www.specializedriders.com](http://www.specializedriders.com)

**SPECIALIZED**  
*ridersclub*







## THE RIGHT TOOL **FOR THE JOB**

*Our proprietary FACT (Functional Advanced Composite Technology) helps us make the best bikes and equipment in the world.*

**IT DOESN'T MATTER HOW OR WHERE YOU WANT TO RIDE,** our goal is to make sure that you get more from every mile. That's where our proprietary FACT composite technology comes in. More than just a range of composite materials, FACT allows us to make your ride better because it gives our design and engineering teams the power to utilize an integrated approach to design, material choice, fabrication method and testing.

FACT is a proprietary term that defines our advanced composites development and fabrication process, one that starts with the specific demands of the experience that any rider is looking to have and ends with frame systems that are light, stiff, sure handling and strong enough to win a Green jersey in the Tour de France, a mountain bike world championship or a sprint at the end of your local ride.

Because we are always concerned about the performance of a bike as a whole, we never focus on a specific attribute like weight or stiffness without considering its effect on the performance of the entire machine. By considering all attributes of a bike and how they interact, we're able to fine-tune a FACT frame system for any experience that you're looking to have. And because our entire company is filled with demanding cyclists, creating bikes and equipment that out-perform everything else on the market isn't just a job, it's our passion.

**CARBON**  
*fact*



S-WORKS TARMAC SL

EXPERIENCE: COMPETITIVE ROAD

Carbon / Red

BUILT FOR BOONEN. BUILT FOR BETTINI.  
BUILT FOR **YOU.**

*Because it had to meet the demands of fast finishing riders like Tour de France Green Jersey winner Tom Boonen and Road World Champion Paolo Bettini, we couldn't afford to make just another featherweight frame. So we delivered the all-new S-Works Tarmac® SL2. It hits the scales at over 100 grams less than our S-Works Tarmac SL, yet boasts the best lateral and torsional stiffness of any bike we've ever made.*

**TOM BOONEN** on his way to the Green Jersey in the 2007 Tour de France.



## ART. SCIENCE. SPEED.

*FACT IS technology makes the SL2 the stiffest, best handling road bike on the market.*



**FURTHER BOOSTING** the SL2's performance out on the road and in our lab is the bike's fully integrated S-Works FACT carbon crank. For 2008, it's even stiffer (it was already the stiffest on the market) and better shifting than the original version thanks to a total redesign.

**WE MADE OUR FIRST CARBON BIKE IN 1988** and, in the two decades since, we've learned a lot about blending ultra-strong fibers and resin for the best combination of stiffness and resilience, strength and durability. Control of the design, material selection and fabrication method used in the creation of our new FACT IS (Integrated Structure) chassis allows us to shape and massage every square millimeter of the SL2 for maximum performance.

New for 2008, our FACT IS manufacturing process integrates several different manufacturing methods, including our Az1 sequential curing and monocoque fabrication methods, to achieve new levels of performance. FACT IS has allowed us to save 100 grams over last year's Tarmac frame, while dramatically boosting efficiency and compliance.

**THE FACT CARBON FORK** on our S-Works Tarmac SL2 is incredibly light (it's just 340 grams), but also amazingly stiff to ensure precise handling. An integrated approach to design has allowed us to employ a unique carbon crown and steerer assembly that uses a standard 1.125-inch bearing on the top and a larger 1.5-inch bearing on the bottom.





S-WORKS TARMAC

THE FIRST FAMILY OF SPEED

With a Road World Championship and a Tour de France Green Jersey to its credit, the Tarmac is the fastest family of bikes we've ever made.



PAOLO BETTINI winning stage 3 of the 2007 Vuelta a España aboard his Tarmac SL2.



Raw Keyline

S-WORKS TARMAC SL2

- S-Works FACT 11r carbon frame, FACT IS construction, compact race design
- S-Works FACT monocoque carbon fork; full carbon legs, crown and steerer, 1.5" crown bearing race
- S-Works Barmac Wedge, carbon bar/stem combo, superlight integrated carbon design, adjustable stem angle, short reach drop
- SRAM Red, 10-speed Double Tap shifters and short cage rear derailleur
- S-Works FACT carbon crankset, integrated oversize design
- Roval Rapide SL carbon wheelset, mid-section full carbon clincher rim, carbon front hub body, alloy rear cassette hub, Roval Ti QR
- S-Works Mondo Open Tubular tires, 700x23c, dual-compound tread, aramid bead, 290 tpi
- Body Geometry Toupé Team saddle, super light foam, carbon reinforced base, hollow Ti rails, microfiber cover



Gerolsteiner



Carbon / Red

S-WORKS TARMAC SL2 MODULE

- S-Works FACT 11r carbon frame, FACT IS construction, compact race design
- S-Works FACT monocoque carbon fork; full carbon legs, crown and steerer, 1.5" crown bearing race
- S-Works FACT carbon crankset, integrated oversize design
- S-Works SL seatpost, FACT carbon w/ Zertz insert, 27.2mm



Carbon/ Red

S-WORKS TARMAC SL2 FRAMESET

- S-Works FACT 11r carbon frame, Az1 construction, compact race design
- S-Works FACT monocoque carbon fork; full carbon legs, crown and steerer
- S-Works SL seatpost, FACT carbon w/ Zertz insert, 27.2mm



Raw Keyline



Gerolsteiner

S-WORKS TARMAC SL

- S-Works FACT 10r carbon frame, Az1 construction, compact race design
- S-Works FACT monocoque carbon fork; full carbon legs, crown and steerer
- S-Works Pro-Set stem, 31.8mm handlebar clamp, 4-position adjustable, Ti hardware
- S-Works SL, FACT carbon aero handlebar, short-reach drop, 31.8mm clamp
- Shimano Dura-Ace 10-speed STI shifters and short cage rear derailleur
- S-Works FACT carbon crankset, integrated oversize design
- Roval Fusee Star wheelset, E5 alloy rims, forged and CNC hubs, alloy cassette, Roval Ti QR
- S-Works Mondo Open Tubular tires, 700x23c, dual-compound tread, aramid bead, 290 tpi
- Body Geometry Toupé Team saddle, super light foam, carbon reinforced base, hollow Ti rails, microfiber cover



Red / White



Red / White

S-WORKS TARMAC SL FRAMESET

- S-Works FACT 10r carbon frame, Az1 construction, compact race design
- S-Works FACT monocoque carbon fork; full carbon legs, crown and steerer
- S-Works SL seatpost, FACT carbon w/ Zertz insert, 27.2mm



Gerolsteiner

S-Works Tarmac SL2							S-Works Tarmac SL					
Size	49	52	54	56	58	61	49	52	54	56	58	61
Seat Tube Length, BB C-T	460	490	510	530	550	580	460	490	510	530	550	580
Top Tube Length (Horizontal)*	518	537	548	565	582	600	518	537	548	565	582	600
Bottom Bracket Drop	71.5	71.5	69	69	67.5	67.5	71.5	71.5	69	69	67.5	67.5
Chainstay Length	405	405	405	405	407	410	405	405	405	405	407	410
Seat Tube Angle	75.5°	74°	73.5°	73.25°	73°	72.5°	75.5°	74°	73.5°	73.25°	73°	72.5°
Head Tube Angle	72.25°	73°	73°	73.5°	73.5°	74°	72.25°	73°	73°	73.5°	73.5°	74°
Fork Rake	45	45	45	43	43	43	45	45	45	43	43	43
Trail	62	57	57	56	56	53	62	57	57	56	56	53
Front Center	576	576	583	591	605	612	576	576	583	591	605	612
Wheel Base	970	970	978	986	1003	1013	970	970	978	986	1003	1013
Standover Height	730	755	777	800	828	857	730	754	777	800	826	852
Head Tube Length	100	120	145	170	205	230	100	120	145	170	205	230
Handlebar Width	400	420	420	420	440	440	400	400	420	420	440	440
Stem Length	90	100	110	120	120	130	75	90	100	100	110	120
Crank Length	170	170	172.5	172.5	175	175	170	170	172.5	172.5	175	175
Seatpost Length	300	350	350	350	350	350	300	350	350	350	350	350

\* TT is measured horizontally from center of HT to center of ST  
All measurements are in millimeters unless otherwise noted.



FABIAN WEGMANN flies the German National Champion colors at the 2007 Tour de France.



# S-WORKS ROUBAIX SL

EXPERIENCE: **ENDURANCE ROAD**

“THIS BIKE EATS MILES AS IF THEY WERE  
BITES OF **FILET MIGNON**”

*When our smooth-rolling S-Works Roubaix SL isn't getting nods like this one from Men's Journal, it's busy helping teams at the cobbled Classics—like Gerolsteiner and QuickStep—get the most efficiency and comfort out of every mile. Built with the same tried and true ergonomic geometry that made the original Roubaix a category-leading favorite, our top-tier model just keeps getting lighter, faster and more compliant. Whether it's the Tour of Flanders or just your favorite century loop, the S-Works Roubaix SL rides smooth as butter from the first mile to the last.*

**GEROLSTEINER'S DAVID KOPP**  
puts our most compliant frame  
to the test at the Paris Roubaix.



S-WORKS ROUBAIX SL

YOUR LONG HAUL  
ADVANTAGE

The S-Works Roubaix won't be shortchanged when it comes to performance. No other bike offers more comfort, efficiency, power and speed, all in one mile-hungry package. We started with a fanatical focus on ergonomics, from its ultra refined geometry (for the most optimal riding position) all the way down to the vibration-damping Zertz inserts and pressure relieving Body Geometry saddle. Then we completed the package with a lightweight FACT Az1 carbon frame and totally integrated design that, among other benefits, promises benchmark vertical compliance and torsional stiffness.

**KNOWN FOR ITS ABILITY** to conquer the cobbles with smooth-riding speed and compliance, our legendary Roubaix bike is named after one of the toughest single day races on the Pro Tour calendar, Paris-Roubaix.



Quick-Step

S-WORKS ROUBAIX SL DA

- S-Works FACT 10r carbon frame, Az1 construction, compact race design, Zertz inserts
- S-Works FACT monocoque carbon fork; full carbon legs, crown and steerer w/ Zertz inserts
- S-Works Pro-Set stem, 31.8mm handlebar clamp, 4-position adjustable, Ti hardware
- S-Works SL, FACT carbon aero handlebar, short-reach drop, 31.8mm clamp
- Shimano Dura-Ace, 10-speed STI shifters and rear derailleur
- S-Works FACT carbon crankset, integrated oversize design
- Roval Roubaix 322x wheelset, E5 alloy rims, alloy cassette body, Roval Ti QRs
- S-Works Roubaix, 700x23/25c tires, open tubular construction, dual-compound tread, aramid bead, 290 tpi
- Body Geometry Toupé Gel saddle, super light foam, carbon reinforced base, hollow Ti rails, microfiber cover



Blue



Blue

S-WORKS ROUBAIX SL SRAM

- S-Works FACT 10r carbon frame, Az1 construction, compact race design, Zertz inserts
- S-Works FACT monocoque carbon fork; full carbon legs, crown and steerer w/ Zertz inserts
- S-Works Barmac Wedge, carbon bar/stem combo, superlight integrated carbon design, adjustable stem angle, short-reach drop bar
- SRAM Red shifters, 10-speed Double Tap
- SRAM OG-1090 cassette, 10-speed 11-26t
- S-Works FACT carbon crankset, integrated oversize design
- Roval Rapide SL carbon wheelset, mid-section full carbon clincher rims, carbon front hub body, alloy rear cassette hub, Roval Ti QRs
- S-Works Roubaix, 700x23/25c tires, open tubular construction, dual-compound tread, aramid bead, 290 tpi
- Body Geometry Toupé Gel saddle, super light foam, carbon reinforced base, hollow Ti rails, microfiber cover



Blue

S-WORKS ROUBAIX SL FRAMESET

- S-Works FACT 10r carbon frame, Az1 construction, compact race design, Zertz inserts
- S-Works FACT monocoque carbon fork; full carbon legs, crown and steerer w/ Zertz inserts
- S-Works SL seatpost, FACT carbon w/ Zertz insert, 27.2mm



Blue

S-WORKS ROUBAIX SL MODULE

- S-Works FACT 10r carbon frame, Az1 construction, compact race design, Zertz inserts
- S-Works FACT monocoque carbon fork; full carbon legs, crown and steerer w/ Zertz inserts
- S-Works FACT carbon crankset, integrated oversize design
- 50x34T chainrings
- S-Works SL seatpost, FACT carbon w/ Zertz insert, 27.2mm

S-Works Roubaix SL						
Size	49	52	54	56	58	61
Seat Tube Length, BB C-T	450	480	500	520	540	570
Top Tube Length (Horizontal)*	518	537	548	565	582	600
Bottom Bracket Drop	73	73	71.5	71.5	70	70
Chainstay Length	412	412	415	415	418	420
Seat Tube Angle	75.5°	74°	73.5°	73.25°	73°	72.5°
Head Tube Angle	72°	72°	72°	72.5°	72.5°	73°
Fork Rake	49	49	49	49	49	49
Trail	59	59	59	56	56	53
Front Center	582	588	595	606	621	628
Wheel Base	983	989	1000	1010	1029	1038
Standover Height	718	737	757	780	801	825
Head Tube Length	125	145	165	190	215	235
Handlebar Width	400	400	420	420	440	440
Stem Length	75	90	100	100	110	120
Crank Length	170	170	172.5	172.5	175	175
Seatpost Length	300	350	350	350	350	350

\* TT is measured horizontally from center of HT to center of ST  
All measurements in millimeters unless otherwise noted.



**S-WORKS** RUBY SL

EXPERIENCE: **WOMEN'S PERFORMANCE ROAD**

THIS IS ONE **FIERCE FLYER**

*Performance optimized for speed-hungry racers and enthusiasts looking for the lightest, fastest and best fitting partner on the road, the S-Works Ruby®SL will satisfy your addiction for brutal climbs, thrilling descents and high mileage. This female-designed and engineered machine features a full carbon chassis, women's-specific geometry and custom components that guarantee a seamless and purpose-built ride without compromise.*

**KAT CARROLL** of the Aaron's Pro Women's Cycling Team crushes the competition at the Joe Martin Stage Race.



S-WORKS RUBY SL

IT'S ALL ABOUT SYNERGY

Since we first introduced the Ruby in 2006, the Designs for Women team hasn't stopped dreaming up ways to make it better. You can still expect the same custom carbon frame lay-up process and proprietary FACT carbon crankset that make the S-Works Ruby SL strong, compliant and agile, but this year, we've pushed the envelope even more. New, integrated elements like the lightweight, one-piece Ruby Mac bar/stem system and pressure-relieving Body Geometry Ruby saddle make our premier women's performance bike the downright best in its class.



AARON'S PRO WOMEN'S CYCLING with their eyes on the prize at the U.S. National Criterium Championships in Downers Grove, IL.



Carbon / Blue / White

S-WORKS RUBY SL

- S-Works FACT 10r carbon frame, Az1 construction, Designs for Women compact design, Zertz inserts
- S-Works FACT monocoque carbon fork; full carbon legs, crown and steerer w/ Zertz inserts
- Shimano Dura-Ace 10-speed STI shifters and rear derailleur, short cage
- S-Works FACT carbon crankset, integrated oversize design
- Roval Fusee SL wheelset, E5 alloy offset rear rims, carbon front hub body, alloy cassette body, Roval Ti QRs
- S-Works All-Condition 700x23c tires, dual-compound tread, aramid bead, 127 tpi
- Body Geometry Ruby Women's saddle, carbon reinforced base, hollow Ti rails, microfiber cover



Carbon / Blue / White

S-WORKS RUBY SL MODULE

- S-Works FACT 10r carbon frame, Az-1 construction, Designs for Women compact design, Zertz inserts
- S-Works FACT monocoque carbon fork; full carbon legs, crown and steerer w/ Zertz inserts
- S-Works FACT carbon crankset, integrated oversize design
- S-Works SL seatpost, FACT carbon w/ Zertz insert, 27.2mm

S-Works Ruby SL					
Size	44	48	51	54	56
Seat Tube Length, BB C-T	400	430	450	480	500
Top Tube Length (Horizontal)*	496	506	518	537	548
Bottom Bracket Drop	73	73	73	73	71.5
Chainstay Length	405	405	405	405	408
Seat Tube Angle	76°	75.75°	75.5°	74°	73.5°
Head Tube Angle	70.5°	71.25°	72°	72°	72°
Fork Rake	51	51	49	49	49
Trail	66	62	59	59	59
Front Center	574	579	582	588	595
Wheel Base	967	973	976	982	993
Standover Height	693	718	735	758	778
Head Tube Length	105	115	125	145	165
Handlebar Width	380	380	400	400	420
Stem Length	75	75	90	100	100
Crank Length	167.5	167.5	170	170	172.5
Seatpost Length	300	300	350	350	350

\* TT is measured horizontally from center of HT to center of ST  
All measurements are in millimeters unless otherwise noted.



## ROVAL WHEELS

### YOU NEED A SYSTEM

*A truly integrated systems approach to design ensures that our Roval wheels are the fastest and most durable wheels in the widest range of conditions.*

#### STARTED BY A FRENCH ENGINEER BACK IN THE 1970'S,

*Roval were the first-ever wheels to feature a hub, spokes and rim designed to work as a complete system. Because they were designed as a system instead of several parts, Roval wheels were lighter, stronger and faster than anything else on the market. Today, we carry on that vision by designing every single Roval wheel as an integrated unit that lends itself to a certain riding experience (time trialing, trail riding, etc.).*

*For 2008, our engineers have employed this same design to create the first-ever Roval mountain wheels—the Contrôle™ XC and Traversée™ All-Mountain. At just over 1400 grams, the Contrôle XC race wheelset is quite possibly the lightest complete wheelset on the market, but thanks to an E5 alloy rim, Swiss-made hubs and spokes and hexagonal nipples, it's strong enough to race for seasons to come—after all, the Contrôle XC already boasts a world championship under Specialized-sponsored Christoph Sauser.*



**ROVAL CONTRÔLE™ XC RACE**  
Mountain



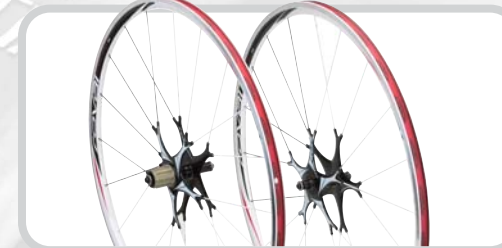
**ROVAL TRAVERSÉE™**  
Mountain



**ROVAL RAPIDE STAR™ CARBON**  
Competitive TT/Triathlon



**ROVAL RAPIDE STAR™ CARBON CLINCHER**  
Competitive TT/Triathlon



**ROVAL FUSÉE STAR™**  
Competitive TT/Triathlon



**ROVAL ALPINISTE™ SL CARBON**  
Competitive Road Racing



**ROVAL RAPIDE™ SL CARBON**  
Competitive Road Racing



**ROVAL FUSÉE™ SL**  
Competitive Road Racing



**ROVAL FUSÉE™**  
Competitive Road Racing



**ROVAL ÉCHAPPÉE™**  
Competitive Road Racing



**ROVAL ROUBAIX™ 322X**  
Endurance Road



**ROVAL PAVÉ™ SL**  
Freeroad



**ROVAL PAVÉ™**  
Freeroad

*For detailed specifications, color options and to check out our line of Roval parts and accessories or to find a dealer near you, please visit [www.specialized.com](http://www.specialized.com).*



# S-WORKS TRANSITION

EXPERIENCE: TRIATHLON / TT RACING

## TIME OUT

Completely redesigned for your battle against the clock, the all-new Transition® slices through the wind and cuts seconds off your next ride like no other machine. Our proprietary FACT technology allows us to massage the shape of every tube in the Transition's chassis to be both aerodynamic and ultra-efficient. Whether you test it with calipers or your legs, you'll find that the Transition is the fastest bike we've ever made.

TAKING KONA by storm, Chris "Macca" McCormack chases down the leaders on his S-Works Transition to ultimately win the Ironman World Championship.



NEED TO KILL SOME **TIME?**

*Make sure you've got the all-new S-Works Transition,  
the most advanced weapon ever made for snuffing seconds.*

**INTEGRATED FACT FORK** *designed for minimal drag and dependable handling, the Transition's FACT carbon fork minimizes turbulence thanks to the aero profile of its fork blades, unique crown shape, small diameter steerer tube and truly integrated frame-and-fork interface.*

**ULTRA AERODYNAMIC FRAME** *Extremely narrow FACT carbon tubes minimize drag through the use of an airfoil shape (the tallest allowed by the UCI). A small diameter 1-inch steerer reduces frontal area. A forward arcing seat tube creates an aerodynamic shelter for the rear wheel, and the FACT carbon seat stays are designed to tuck behind the seat tube.*

**INTEGRATED BRAKING SYSTEM** *To ensure maximum aerodynamics, performance and control, we've designed and engineered a completely integrated braking system just for the Transition. You won't find it on any other bike.*

**SLIPPERY SEAT STAYS** *For maximum aerodynamics, the Transition's seat stays are designed to stay tucked behind the seat tube until just before they flare to meet the rear axle.*





S-WORKS  
TRANSITION

SPLIT SECONDS

With a slippery FACT carbon frame and fork, integrated braking system and integrated FACT carbon crank, the Transition gives you the power to beat the clock.



**PULL SPEED AHEAD** Macca sprints against the clock on his way to an Ironman World Championship



S-WORKS TRANSITION

- S-Works FACT 9r N'Aero tube shape frame, compact aero geometry, vertical seat adjustment
- S-Works FACT N'Aero fork, alloy 1" steerer
- Zipp Vuka Aero carbon aero bar combo
- S-Works Integrated Brake System
- SRAM 10-speed drivetrain
- S-Works FACT carbon crankset, integrated oversize design
- Zipp 404 carbon wheelset
- Body Geometry TriTip saddle, superlight foam, carbon reinforced base, hollow Ti rails, microfiber cover, 50mm nose width



Quick-Step



Gerolsteiner

S-Works Transition				
Size	S	M	L	XL
Equivalent Standard Frame Sizing	510	540	560	590
Seat Tube Length, BB C-T (Vertical)	445	445	445	475
Reach	380	395	405	425
Stack	505	516	526	527
Bottom Bracket Drop	72	72	72	72
CS	395	395	395	395
Saddle Setback Range*	-100 to +50	-100 to +50	-100 to +50	-100 to +50
Head Tube Angle (°)	71.5	72	72	72.5
Fork Rake	43	43	43	43
Trail	68	65	65	62
Front Center	575	589	602	621
Wheel Base	961	975	988	1007
Standover Height	761	763	768	787
Head Tube Length Integrated	100	110	120	120
Handlebar Width	400	400	420	420
Stem Length	75	75	90	100
Crank Length	170	172.5	175	175
Seatpost Length**	350F	350B	350B	350B

\* Measured from tip of saddle to center of bottom bracket  
\*\* 350 = length, B = backward, F = forward. S-Works models include both F and B seatposts  
All measurements are in millimeters unless otherwise noted.

S-WORKS TRANSITION MODULE

- S-Works FACT 9r N'Aero tube shape frame, compact aero geometry, vertical seat adjustment
- S-Works FACT N'Aero fork, alloy 1" steerer
- S-Works Integrated Brake System
- S-Works FACT carbon crankset, integrated oversize design
- S-Works Transition carbon, 2 position seatpost



S-WORKS LANGSTER

EXPERIENCE: VELODROME/FIXED GEAR ROAD

S-WORKS LANGSTER FRAMESET

- S-Works E5 AEROTEC frame, fully manipulated tubing, compact track racing design, steel dropout protectors
- Specialized FACT monocoque carbon fork; full carbon legs, crown and steerer
- S-Works SL seatpost, FACT carbon w/ Zertz insert, 27.2mm



CATCH ME IF YOU CAN

Built for rallying city streets and lapping racers at the velodrome, the S-Works Langster™ is as gutsy a ride as it gets. Pure and simple, and fast as hell, it has everything you need and nothing you don't—a fully manipulated AEROTEC frame for precision stiffness and control and an aero seat tube for edging out the competition during intense battles at the track. After all, who needs brakes and bulky gears when you've got two legs and one fast frame?

S-Works Langster						
Size	49	52	54	56	58	61
Seat Tube Length, BB C-T	420	480	500	520	540	570
Top Tube Length (Horizontal)*	510	530	540	555	570	588
Bottom Bracket Drop	61	61	59	59	57	57
Chainstay Length	390	390	390	390	390	390
Seat Tube Angle	76°	75°	74.5°	74.25°	74°	73.5°
Head Tube Angle	73°	73°	73.5°	74°	74.5°	74.5°
Fork Rake	43	43	43	43	43	43
Trail	59	59	56	53	50	50
Front Center	566	579	580	588	596	608
Wheel Base	948	960	963	971	979	992
Standover Height	711	739	760	779	800	826
Head Tube Length	100	110	130	150	170	195
Handlebar Width (cm)	400	400	400	400	420	420
Stem Length	80	90	100	100	110	120
Crank Length	170	170	170	170	172.5	172.5
Seatpost Length	300	350	350	350	350	350

\* TT is measured horizontally from center of HT to center of ST  
All measurements are in millimeters unless otherwise noted.



S-WORKS TRICROSS

EXPERIENCE: FREEROAD

S-WORKS TRICROSS

- S-Works FACT 10m carbon frame, Az1 construction, semi-compact Tricross design, Zertz inserts, rack and fender fittings
- S-Works FACT monocoque carbon Tricross fork; full carbon legs, crown and steerer w/ Speed Zertz, rack and fender fittings
- S-Works Pro-Set stem, 4-position adjustable, Ti hardware
- S-Works SL, FACT carbon aero handlebar, short-reach drop, 31.8mm clamp
- SRAM Force 10-speed Double Tap shifters and rear derailleur, short cage
- S-Works FACT carbon crankset, integrated oversize design, 48x34T chainrings
- Roval Fusee wheelset, E5 alloy rims, alloy cassette body, Roval Ti QR
- S-Works Houffalize CX tires,
- Body Geometry Phenom SL saddle

MASTER OF THE ROAD LESS TRAVELED

The versatile S-Works Tricross® lives for ‘cross racing, adventure riding, long-haul tours, commuting or any place pavement meets dirt. With its nimble and compliant FACT 10m carbon frame, monocoque carbon fork with vibration-damping SpeedZertz and redesigned S-Works FACT carbon crank, this one-of-a-kind rig will make the most of whatever path you choose.



S-WORKS TRICROSS MODULE

- Available as a module consisting of frame, fork, crank and seat post

S-Works Tricross

Size	49	52	54	56	58	61
Seat Tube Length, BB C-T	490	525	545	565	585	615
Top Tube Length (Horizontal)*	515	530	545	560	575	595
Bottom Bracket Drop	71	71	69	69	67	67
Chainstay Length	440	440	440	440	440	440
Seat Tube Angle	75.5°	74.5°	73.5°	73°	72.5°	72°
Head Tube Angle	70°	70.75°	71.5°	72°	72.5°	73°
Fork Rake	49	49	49	47	47	47
Trail	75	70	66	64	61	58
Front Center	596	597	598	601	607	616
Wheel Base	1028	1029	1030	1032	1038	1047
Standover Height	750	773	790	806	824	851
Head Tube Length	110	125	140	155	170	195
Handlebar Width	400	420	420	440	440	440
Stem Length	75	90	100	110	110	120
Crank Length	170	170	172.5	175	175	175
Seatpost Length	300	350	350	350	350	350

\* TT is measured horizontally from center of HT to center of ST  
All measurements are in millimeters unless otherwise noted.



	TARMAC			
MODEL	S-Works Tarmac SL2	S-Works Tarmac SL2 Module	S-Works Tarmac SL2 Frameset	S-Works Tarmac SL
FRAME	S-Works FACT 11r carbon, FACT IS construction, compact race design	S-Works FACT 11r carbon, FACT IS construction, compact race design	S-Works FACT 11r carbon, FACT IS construction, compact race design	S-Works FACT 10r carbon, A2i construction, compact race design
REAR SHOCK	N/A	N/A	N/A	N/A
FORK	S-Works FACT monocoque carbon fork; full carbon legs, crown and steerer, 15° crown bearing race	S-Works FACT monocoque carbon fork; full carbon legs, crown and steerer, 15° crown bearing race	S-Works FACT monocoque carbon fork; full carbon legs, crown and steerer, 15° crown bearing race	S-Works FACT monocoque carbon fork; full carbon legs, crown and steerer w/ Zertiz inserts
HEADSET	S-Works Mindset, 1 1/8" integrated threadless, sealed cartridge ceramic bearings w/ stainless steel races, carbon 20mm cone w/ one 10mm and two 5mm carbon spacers	S-Works Mindset, 1 1/8" integrated threadless, sealed cartridge ceramic bearings w/ stainless steel races, carbon 20mm cone w/ one 10mm and two 5mm carbon spacers	S-Works Mindset, 1 1/8" integrated threadless, sealed cartridge ceramic bearings w/ stainless steel races, carbon 20mm cone w/ one 10mm and two 5mm carbon spacers	S-Works Mindset, 1 1/8" integrated threadless, sealed cartridge ceramic bearings w/ stainless steel races, carbon 20mm cone w/ one 10mm and two 5mm carbon spacers
STEM	S-Works Barmac Wedge, carbon bar/stem combo, superlight integrated carbon design, adjustable stem angle	N/A	N/A	S-Works Pro-Set stem, 31.8mm handlebar clamp, 4-position adjustable, Ti hardware
HANDLEBARS	S-Works Barmac Wedge, carbon bar/stem combo, superlight integrated composite design, short-reach drop	N/A	N/A	S-Works SL, FACT carbon aero handlebar, short-reach drop, 31.8mm clamp
TAPE	Body Geometry cork ribbon	N/A	N/A	Body Geometry cork ribbon
FRONT BRAKE	SRAM Red w/ Roval carbon pads	N/A	N/A	Shimano Dura-Ace
REAR BRAKE	SRAM Red w/ Roval carbon pads	N/A	N/A	Shimano Dura-Ace
BRAKE LEVERS	SRAM Red, 10-speed Double Tap	N/A	N/A	Shimano Dura-Ace, 10-speed STI, flight deck compatible
FRONT DERAILLEUR	SRAM Red, braze-on clamp, bottom pull	N/A	N/A	Shimano Dura-Ace, 34.9mm clamp, bottom pull
REAR DERAILLEUR	SRAM Red, short cage	N/A	N/A	Shimano Dura-Ace, short cage
SHIFT LEVERS	SRAM Red, 10-speed Double Tap	N/A	N/A	Shimano Dura-Ace, 10-speed STI, flight deck compatible
CASSETTE	SRAM OG-1090, 10-speed 11-26t	N/A	N/A	Shimano Dura-Ace, 12-27t
CHAIN	SRAM 1090R, 10-speed	N/A	N/A	Shimano Dura-Ace, 10-speed
CRANKSET	S-Works FACT carbon crankset, integrated oversize design	S-Works FACT carbon crankset, integrated oversize design	N/A	S-Works FACT carbon crankset, integrated oversize design
CHAINRINGS	53x39T	53x39T	N/A	53x39T
BOTTOM BRACKET	S-Works, oversized integrated	S-Works, oversized integrated	N/A	S-Works, oversized integrated
PEDALS	Composite body test ride pedals	N/A	N/A	Composite body test ride pedals
RIMS	Roval Rapide SL Carbon, mid-section full carbon clincher rim	N/A	N/A	Roval Fusee Star, E5 Alloy
FRONT HUB	Roval Rapide SL, carbon hub body, Roval Ti QR	N/A	N/A	Roval Fusee Star, forged and CNC hub body, Roval Ti QR
REAR HUB	Roval Rapide SL, alloy cassette, Roval Ti QR	N/A	N/A	Roval Fusee Star, forged and CNC hub body, alloy cassette, Roval Ti QR
SPOKES	DT Stainless 14/15g Butted Aero	N/A	N/A	DT Stainless 14/15g Butted Aero
FRONT TIRE	S-Works Mondo Open Tubular, 700x23c, dual-compound tread, aramid bead, 290TPI	N/A	N/A	S-Works Mondo Open Tubular, 700x23c, dual-compound tread, aramid bead, 290TPI
REAR TIRE	S-Works Mondo Open Tubular, 700x23c, dual-compound tread, aramid bead, 290TPI	N/A	N/A	S-Works Mondo Open Tubular, 700x23c, dual-compound tread, aramid bead, 290TPI
TUBES	Specialized Turbo presta tube	N/A	N/A	Specialized Turbo presta tube
SADDLE	Body Geometry Toupé Team, super light foam, carbon reinforced base, hollow Ti rails, microfiber cover	N/A	N/A	Body Geometry Toupé Team, super light foam, carbon reinforced base, hollow Ti rails, microfiber cover
SEAT POST	S-Works SL, FACT carbon w/ Zertiz insert, 27.2mm	S-Works SL, FACT carbon w/ Zertiz insert, 27.2mm	S-Works SL, FACT carbon w/ Zertiz insert, 27.2mm	S-Works SL, FACT carbon w/ Zertiz insert, 27.2mm
SEAT BINDER	S-Works CNC alloy binder, 32.6mm clamp	S-Works CNC alloy binder, 32.6mm clamp	S-Works CNC alloy binder, 32.6mm clamp	S-Works CNC alloy binder, 32.6mm clamp
NOTES	Carbon chain stay protector, derailleur hanger, clear coat, owners manual	Carbon chain stay protector, derailleur hanger, clear coat, owners manual	Carbon chain stay protector, derailleur hanger, clear coat, owners manual	Carbon chain stay protector, derailleur hanger, clear coat, owners manual

	ROUBAIX			
MODEL	S-Works Tarmac SL Frameset	S-Works Roubaix SL SRAM	S-Works Roubaix SL DA	S-Works Roubaix SL Module
FRAME	S-Works FACT 10r carbon, A2i construction, compact race design	S-Works FACT 10r carbon, A2i construction, compact race design, Zertiz inserts	S-Works FACT 10r carbon, A2i construction, compact race design, Zertiz inserts	S-Works FACT 10r carbon, A2i construction, compact race design, Zertiz inserts
REAR SHOCK	N/A	N/A	N/A	N/A
FORK	S-Works FACT monocoque carbon fork; full carbon legs, crown and steerer	S-Works FACT monocoque carbon fork; full carbon legs, crown and steerer w/ Zertiz inserts	S-Works FACT monocoque carbon fork; full carbon legs, crown and steerer w/ Zertiz inserts	S-Works FACT monocoque carbon fork; full carbon legs, crown and steerer w/ Zertiz inserts
HEADSET	S-Works Mindset, 1 1/8" integrated threadless, sealed cartridge ceramic bearings w/ stainless steel races, carbon 20mm cone w/ one 10mm and two 5mm carbon spacers	S-Works Mindset, 1 1/8" integrated threadless, sealed cartridge ceramic bearings w/ stainless steel races, carbon 20mm cone w/ one 10mm and two 5mm carbon spacers	S-Works Mindset, 1 1/8" integrated threadless, sealed cartridge ceramic bearings w/ stainless steel races, carbon 20mm cone w/ one 10mm and two 5mm carbon spacers	S-Works Mindset, 1 1/8" integrated threadless, sealed cartridge ceramic bearings w/ stainless steel races, carbon 20mm cone w/ one 10mm and two 5mm carbon spacers
STEM	N/A	S-Works Pro-Set stem, 31.8mm handlebar clamp, 4-position adjustable, Ti hardware	N/A	N/A
HANDLEBARS	N/A	S-Works Barmac Wedge, carbon bar/stem combo, superlight integrated carbon design, adjustable stem angle	S-Works SL, FACT carbon aero handlebar, short-reach drop, 31.8mm clamp	N/A
TAPE	N/A	Body Geometry Bar Phat, Soft-Touch cork ribbon w/ 2.5mm gel padding	Body Geometry Bar Phat, Soft-Touch cork ribbon w/ 2.5mm gel padding	N/A
FRONT BRAKE	N/A	SRAM Red w/ Roval carbon pads	Shimano Dura-Ace	N/A
REAR BRAKE	N/A	SRAM Red w/ Roval carbon pads	Shimano Dura-Ace	N/A
BRAKE LEVERS	N/A	SRAM Red, 10-speed Double Tap	Shimano Dura-Ace, 10-speed STI, flight deck compatible	N/A
FRONT DERAILLEUR	N/A	SRAM Red, 34.9mm clamp, bottom pull	Shimano Dura-Ace, 34.9mm clamp, bottom pull	N/A
REAR DERAILLEUR	N/A	SRAM Red, short cage	Shimano Dura-Ace, short cage	N/A
SHIFT LEVERS	N/A	SRAM Red, 10-speed Double Tap	Shimano Dura-Ace, 10-speed STI, flight deck compatible	N/A
CASSETTE	N/A	SRAM OG-1090, 10-speed 11-26t	Shimano Dura-Ace, 12-27t	N/A
CHAIN	N/A	SRAM 1090R, 10-speed	Shimano Dura-Ace, 10-speed	N/A
CRANKSET	N/A	S-Works FACT carbon crankset, integrated oversize design	S-Works FACT carbon crankset, integrated oversize design	S-Works FACT carbon crankset, integrated oversize design
CHAINRINGS	N/A	50x34T	50x34T	50x34T
BOTTOM BRACKET	N/A	S-Works, oversized integrated	S-Works, oversized integrated	S-Works, oversized integrated
PEDALS	N/A	Composite body test ride pedals	Composite body test ride pedals	N/A
RIMS	N/A	Roval Rapide SL Carbon, mid-section full carbon clincher rim	Roval Roubaix 322x, E5 Alloy	N/A
FRONT HUB	N/A	Roval Rapide SL, carbon hub body, Roval Ti QR	Roval Roubaix 322x, Roval Ti QR	N/A
REAR HUB	N/A	Roval Rapide SL, alloy cassette, Roval Ti QR	Roval Roubaix 322x, alloy cassette, Roval Ti QR	N/A
SPOKES	N/A	DT Stainless 14/15g Butted Aero	DT Stainless 14/15g Butted Aero	N/A
FRONT TIRE	N/A	S-Works Roubaix, 700x23/25c, open tubular construction, dual-compound tread, aramid bead, 290TPI	S-Works Roubaix, 700x23/25c, open tubular construction, dual-compound tread, aramid bead, 290TPI	N/A
REAR TIRE	N/A	S-Works Roubaix, 700x23/25c, open tubular construction, dual-compound tread, aramid bead, 290TPI	S-Works Roubaix, 700x23/25c, open tubular construction, dual-compound tread, aramid bead, 290TPI	N/A
TUBES	N/A	Specialized Turbo presta tube	Specialized Turbo presta tube	N/A
SADDLE	N/A	Body Geometry Toupé Gel, super light foam, carbon reinforced base, hollow Ti rails, microfiber cover	Body Geometry Toupé Gel, super light foam, carbon reinforced base, hollow Ti rails, microfiber cover	N/A
SEAT POST	S-Works SL, FACT carbon w/ Zertiz insert, 27.2mm	S-Works SL, FACT carbon w/ Zertiz insert, 27.2mm	S-Works SL, FACT carbon w/ Zertiz insert, 27.2mm	S-Works SL, FACT carbon w/ Zertiz insert, 27.2mm
SEAT BINDER	S-Works CNC alloy binder, 32.6mm clamp	S-Works CNC alloy binder, 32.6mm clamp	S-Works CNC alloy binder, 32.6mm clamp	S-Works CNC alloy binder, 32.6mm clamp
NOTES	Carbon chain stay protector, derailleur hanger, clear coat, owners manual	Carbon chain stay protector, derailleur hanger, clear coat, owners manual	Carbon chain stay protector, derailleur hanger, clear coat, owners manual	Carbon chain stay protector, derailleur hanger, clear coat, owners manual

	RUBY		TRANSITION	
MODEL	S-Works Roubaix SL Frameset	S-Works Ruby SL	S-Works Ruby SL Module	S-Works Transition
FRAME	S-Works FACT 10r carbon, A2i construction, compact race design, Zertiz inserts	S-Works FACT 10r carbon, A2-i construction, Designs for Women compact design, Zertiz inserts	S-Works FACT 10r carbon, A2i construction, Designs for Women compact design, Zertiz inserts	S-Works FACT 9r N'Aero tube shaping, compact aero geometry, vertical seat adjustment
REAR SHOCK	N/A	N/A	N/A	N/A
FORK	S-Works FACT monocoque carbon fork; full carbon legs, crown and steerer w/ Zertiz inserts	S-Works FACT monocoque carbon fork; full carbon legs, crown and steerer w/ Zertiz inserts	S-Works FACT monocoque carbon fork; full carbon legs, crown and steerer w/ Zertiz inserts	S-Works FACT N'Aero fork, alloy 1" steerer
HEADSET	S-Works Mindset, 1 1/8" integrated threadless, sealed cartridge ceramic bearings w/ stainless steel races, carbon 20mm cone w/ one 10mm and two 5mm carbon spacers	S-Works Mindset, 1 1/8" integrated threadless, sealed cartridge ceramic bearings w/ stainless steel races, carbon 20mm cone w/ one 10mm and two 5mm carbon spacers	S-Works Mindset, 1 1/8" integrated threadless, sealed cartridge ceramic bearings w/ stainless steel races, carbon 20mm cone w/ one 10mm and two 5mm carbon spacers	Specialized Mindset Plus Carbon, 1" integrated threadless, cartridge sealed bearings, 10mm and two 5mm carbon spacers
STEM	N/A	S-Works Rubymac, carbon bar/stem combo, superlight integrated carbon design, adjustable stem angle	N/A	S-Works Pro-Set stem, 31.8mm handlebar clamp, 4-position adjustable, Ti hardware
HANDLEBARS	N/A	S-Works Ruby Mac, carbon bar/stem combo, superlight integrated carbon design, women's-specific drop shaping	N/A	Zipp Vuka Aero carbon aero bar combo
TAPE	N/A	Body Geometry Bar Phat, cork ribbon w/ 2.5mm gel padding	N/A	Body Geometry cork ribbon
FRONT BRAKE	N/A	Shimano Dura-Ace	N/A	S-Works integrated brake system
REAR BRAKE	N/A	Shimano Dura-Ace	N/A	S-Works integrated brake system
BRAKE LEVERS	N/A	Shimano Dura-Ace, 10-speed STI, flight deck compatible	N/A	Zipp Vuka aero carbon brake levers
FRONT DERAILLEUR	N/A	Shimano Dura-Ace, 34.9mm clamp, bottom pull	N/A	SRAM Red, braze-on clamp, bottom pull
REAR DERAILLEUR	N/A	Shimano Dura-Ace, short cage	N/A	SRAM Red, short cage
SHIFT LEVERS	N/A	Shimano Dura-Ace, 10-speed STI, flight deck compatible	N/A	SRAM Force TT, 10-speed
CASSETTE	N/A	Shimano Dura-Ace, 12-27t	N/A	SRAM OG-1090, 10-speed 11-26t
CHAIN	N/A	Shimano Dura-Ace, 10-speed	N/A	SRAM 1090R, 10-speed
CRANKSET	N/A	S-Works FACT carbon crankset, integrated oversize design	S-Works FACT carbon crankset, integrated oversize design	S-Works FACT carbon, integrated oversize design
CHAINRINGS	N/A	50x34T	50x34T	53x39T
BOTTOM BRACKET	N/A	S-Works, oversized integrated	S-Works, oversized integrated	S-Works, oversized integrated
PEDALS	N/A	Composite body test ride pedals	N/A	Composite body test ride pedals
RIMS	N/A	Roval Fusee SL, E5 Alloy, offset rear rim	N/A	Zipp 404 carbon clincher
FRONT HUB	N/A	Roval Fusee SL, carbon hub body, Roval Ti QR	N/A	Zipp 404 carbon clincher
REAR HUB	N/A	Roval Fusee, alloy cassette, Roval Ti QR	N/A	Zipp 404 carbon clincher
SPOKES	N/A	DT Stainless 14/15g Butted Aero	N/A	Stainless 14g aero
FRONT TIRE	N/A	S-Works All-Condition 700x23c, dual-compound tread, aramid bead, 127TPI	N/A	S-Works Mondo Open Tubular, 700x21c, dual-compound tread, aramid bead, 290TPI
REAR TIRE	N/A	S-Works All-Condition 700x23c, dual-compound tread, aramid bead, 127TPI	N/A	S-Works Mondo Open Tubular, 700x21c, dual-compound tread, aramid bead, 290TPI
TUBES	N/A	Specialized Turbo presta tube	N/A	Specialized Turbo presta tube
SADDLE	N/A	Body Geometry Ruby Women's, carbon reinforced base, hollow Ti rails, microfiber cover	N/A	Body Geometry TriTip, super light foam, carbon reinforced base, hollow Ti rails, microfiber cover, 50mm nose width
SEAT POST	S-Works SL, FACT carbon w/ Zertiz insert, 27.2mm	S-Works SL, FACT carbon w/ Zertiz insert, 27.2mm	S-Works SL, FACT carbon w/ Zertiz insert, 27.2mm	S-Works Transition carbon, 2 position
SEAT BINDER	S-Works CNC alloy binder, 32.6mm clamp	S-Works CNC alloy binder, 32.6mm clamp	S-Works CNC alloy binder, 32.6mm clamp	S-Works wedge seat binder
NOTES	Carbon chain stay protector, derailleur hanger, clear coat, owners manual	Carbon chain stay protector, derailleur hanger, clear coat, owners manual	Carbon chain stay protector, derailleur hanger, clear coat, owners manual	Chain stay protector, derailleur hanger, clear coat, owners manual

	LANGSTER		TRICROSS	
MODEL	S-Works Transition Carbon Module	S-Works Langster Frameset	S-Works Tricross	S-Works Tricross Module
FRAME	S-Works FACT 9r N'Aero tube shaping, compact aero geometry, vertical seat adjustment	S-Works ES Aerotec fully manipulated tubing, compact track racing design, steel dropout protectors	S-Works FACT 10m carbon, A2i construction, semi-compact Tricross design, Zertiz inserts, rack and fender fittings	S-Works FACT 10m carbon, A2i construction, semi-compact Tricross design, Zertiz inserts, rack and fender fittings
REAR SHOCK	N/A	N/A	N/A	N/A
FORK	S-Works FACT N'Aero fork, alloy 1" steerer	Specialized FACT monocoque carbon fork, full carbon legs, crown and steerer	S-Works FACT monocoque carbon Tricross fork; full carbon legs, crown and steerer w/ Speed Zertz, rack and fender fittings	S-Works FACT monocoque carbon Tricross fork; full carbon legs, crown and steerer w/ Speed Zertz, rack and fender fittings
HEADSET	Specialized Mindset Plus Carbon, 1" integrated threadless, cartridge sealed bearings, 10mm and two 5mm carbon spacers	Specialized Mindset Plus Carbon, 1 1/8" integrated threadless, cartridge sealed bearings, carbon 20mm cone w/ one 10mm and two 5mm carbon spacers	S-Works Mindset, 1 1/8" integrated threadless, sealed cartridge ceramic bearings w/ stainless steel races, carbon 20mm cone w/ one 10mm and two 5mm carbon spacers	S-Works Mindset, 1 1/8" integrated threadless, sealed cartridge ceramic bearings w/ stainless steel races, carbon 20mm cone w/ one 10mm and two 5mm carbon spacers
STEM	S-Works Pro-Set stem, 31.8mm handlebar clamp, 4-position adjustable, Ti hardware	N/A	S-Works Pro-Set stem, 31.8mm handlebar clamp, 4-position adjustable, Ti hardware	N/A
HANDLEBARS	N/A	N/A	S-Works SL, FACT carbon aero handlebar, short-reach drop, 31.8mm clamp	N/A
TAPE	N/A	N/A	Body Geometry Bar Phat, cork ribbon w/ 2.5mm gel padding	N/A
FRONT BRAKE	S-Works integrated brake system	S-Works integrated brake system	Tricross-specific forged linear pull, road-lever specific length	N/A
REAR BRAKE	S-Works integrated brake system	S-Works integrated brake system	Tricross-specific forged linear pull, road-lever specific length	N/A
BRAKE LEVERS	N/A	N/A	SRAM Force, 10-speed Double Tap w/ brake lever extensions	N/A
FRONT DERAILLEUR	N/A	N/A	SRAM Force, 34.9mm clamp, bottom pull	N/A
REAR DERAILLEUR	N/A	N/A	SRAM Force, short cage	N/A
SHIFT LEVERS	N/A	N/A	SRAM Force, 10-speed Double Tap	N/A
CASSETTE	N/A	N/A	Shimano Dura-Ace, 12-27t	N/A
CHAIN	N/A	N/A	SRAM 1090R, 10-speed	N/A
CRANKSET	S-Works FACT carbon, integrated oversize design	S-Works FACT carbon, integrated oversize design	S-Works FACT carbon crankset, integrated oversize design	S-Works FACT carbon, integrated oversize design
CHAINRINGS	53x39T	53x39T	48x34T	48x3T
BOTTOM BRACKET	S-Works, oversized integrated	N/A	S-Works, oversized integrated	S-Works, oversized integrated
PEDALS	N/A	N/A	Composite body test ride pedals	N/A
RIMS	N/A	N/A	Roval Fusee, E5 Alloy	N/A
FRONT HUB	N/A	N/A	Roval Fusee, Roval Ti QR	N/A
REAR HUB	N/A	N/A	Roval Fusee, alloy cassette, Roval Ti QR	N/A
SPOKES	N/A	N/A	DT Stainless 14g Aero	N/A
FRONT TIRE	N/A	N/A	S-Works Houffalize CX, 700x32c, dual-compound tread, aramid bead, 127TPI	N/A
REAR TIRE	N/A	N/A	S-Works Houffalize CX, 700x32c, dual-compound tread, aramid bead, 127TPI	N/A
TUBES	N/A	N/A	Specialized Turbo presta tube	N/A
SADDLE	N/A	N/A	Body Geometry Phenom SL, super light foam, carbon reinforced base, hollow Ti rails, microfiber cover	N/A
SEAT POST	S-Works Transition carbon, 2 position	S-Works Pavé SL, FACT carbon w/ Zertiz insert, 27.2mm	S-Works SL, FACT carbon w/ Zertiz insert, 27.2mm	S-Works SL, FACT carbon w/ Zertiz insert, 27.2mm
SEAT BINDER	S-Works wedge seat binder	S-Works, forged/CNC, double wedge	S-Works CNC alloy binder	S-Works CNC alloy binder
NOTES	Chain stay protector, derailleur hanger, water bottle and cage, clear coat, owners manual	Chain stay protector, clear coat, owners manual	Carbon chain stay protector, derailleur hanger, clear coat, owners manual	Chain stay protector, chain catcher, derailleur hanger, clear coat, owners manual



# S-WORKS EQUIPMENT

The S-Works name also belongs to some of the highest performing equipment you'll find on the market.

**S-WORKS BARMAC WEDGE** Made from 100% FACT carbon, the Barmac™ Wedge is the only one-piece bar/stem combination that features stem angle adjustability. Thanks to a high-modulus FACT advanced composite weave, the Barmac delivers high strength and stiffness along with excellent comfort. Available in a full range of widths, drops and reaches.



**S-WORKS 2D HELMET** Lids don't get much lighter, more ventilated or better fitting than the new S-Works 2D™ helmet. Every dimension of the 2D is created for ultimate performance. Its Kevlar Inner Matrix skeleton combined with a Dual Density foam shell make the 2D the lightest helmet on the market that still meets CPSC testing standards. The Pro Fit™ 360 retention system provides maximum adjustment for a truly customized fit, while the Mega Mouthport™ and 4th Dimension Cooling create incredible ventilation.



**ROVAL RAPIDE SL CLINCHER** The lightest clincher wheelset we've ever made, the Roval Rapide™ SL utilizes our FACT technology to build a carbon 'mid-v' rim that is light and incredibly durable with dependable, all-condition braking performance. Swiss-made hubs guarantee that the Rapide will be in it for the long-haul.



**FOR A LOOK** at our complete line of equipment or to find a dealer go to [www.specialized.com](http://www.specialized.com)



**BG PRO SL BIB SHORT** Now you can find pro-level performance bibs and shorts for different riders and riding experiences that won't sacrifice quality for function. Our new Pro SL Bib is tailored for short, intense rides or those who prefer a close-to-the-saddle feel—featuring a pliable, dual density chamois, moisture-transfer Fieldsensor fabric and breathable mesh panels. Check out our RBX models if you're looking for an endurance bib or short.



**S-WORKS MOUNTAIN SHOE** When a gram here or there means everything, finding the lightest, stiffest, most high performance shoe that also offers ergonomic comfort is irreplaceable. Built around an uber-efficient FACT carbon sole, the S-Works Mountain is the lightest off-road shoe available with a mechanical closure. A refined Boa closure, new Powerzone lacing and Body Geometry® Footbeds also make it the most efficient.



**S-WORKS THE CAPTAIN TIRE** This aggressive XC Trail tire was designed by Specialized MTB Factory Team Captain Ned Overend to excel in a wide range of trail conditions with the perfect balance of speed and traction. The Captain™ is not only light, supple and puncture-resistant, but features a mixed tread and dual compound design for speed, grip and dexterity no matter what the terrain. Also available in a 29-inch version.



STUMPJUMPER FSR CARBON			
MODEL	S-Works SJ FSR Carbon	S-Works SJ FSR Carbon Frame	SAFIRE
FRAME	All new S-Works Stumpjumper FSR FACT 10m carbon main triangle, A21 construction, M5 alloy chainstays with Brain mount, FACT 10m carbon seatstays with carbon drive side dropout, DMD Direct Mount F.Der, full cartridge bearing pivots, 120mm travel	All new S-Works Stumpjumper FSR FACT 10m carbon main triangle, A21 construction, M5 alloy chainstays with Brain mount, FACT 10m carbon seatstays with carbon drive side dropout, DMD Direct Mount F.Der, full cartridge bearing pivots, 120mm travel	All new S-Works Safire FSR FACT 10m carbon Women's specific main triangle, A21 construction, M5 alloy chainstays with Brain mount, FACT 10m carbon seatstays with carbon drive side dropout, Designs for Women geometry, DMD Direct Mount F.Der, full cartridge bearing pivots, 120mm travel
REAR SHOCK	Specialized AFR Shock w/ remote Trail Tune inertia valve, adj rebound and Brain Fade, 7.25x1.75"	Specialized AFR Shock w/ remote Trail Tune inertia valve, adj rebound and Brain Fade, 7.25x1.75"	Specialized AFR Shock w/ remote Trail Tune inertia valve, adj rebound and Brain Fade, 7.25x1.75"
FORK	Specialized Future Shock S120, 120mm travel, carbon 1 1/8 to 1.5" steerer, Trail Tune inertia valve, adjustable Brain Fade and rebound, piggyback one sided air spring and damper	Specialized Future Shock S120, 120mm travel, carbon 1 1/8 to 1.5" steerer, Trail Tune inertia valve, adjustable Brain Fade and rebound, piggyback one sided air spring and damper	Specialized Future Shock S120, 120mm travel, carbon 1 1/8 to 1.5" steerer, Trail Tune inertia valve, adjustable Brain Fade and rebound, piggyback one sided air spring and damper
HEADSET	1 1/8" threadless, Campy spec integrated sealed cartridge bearing	1 1/8" threadless, Campy spec integrated sealed cartridge bearing	1 1/8" threadless, Campy spec integrated sealed cartridge bearing
STEM	Thomson CNC alloy, 31.8mm clamp, 5 degree	N/A	Thomson CNC alloy, 31.8mm clamp, 5 degree
HANDLEBARS	Specialized OS XC low rise carbon bar, 640mm wide, 6 degree up, 8 degree backsweep	N/A	Specialized OS XC low rise carbon bar, 640mm wide, 6 degree up, 8 degree backsweep
GRIPS	Specialized thin lock on grip, dual density	N/A	Specialized Womens MTB, dual density
FRONT BRAKE	Magura Marta SL, carbon lever, hydraulic disc, 185 and 203mm SL rotor	N/A	Magura Marta SL, carbon lever, hydraulic disc, 160mm SL rotor
REAR BRAKE	Magura Marta SL, carbon lever, hydraulic disc, 160 and 185mm SL rotor	N/A	Magura Marta SL, carbon lever, hydraulic disc, 160mm SL rotor
BRAKE LEVERS	Magura Marta SL, carbon lever, hydraulic disc	N/A	Magura Marta SL, carbon lever, hydraulic disc
FRONT DERAILLEUR	Shimano M970 XTR, DMD top swing	Shimano M970 XTR, DMD top swing	Shimano M970 XTR, DMD top swing
REAR DERAILLEUR	SRAM X-0, 9-speed, mid cage	N/A	SRAM X-0, 9-speed, mid cage
SHIFT LEVERS	SRAM X-0, carbon/aluminum 9-speed trigger	N/A	SRAM X-0, carbon/aluminum 9-speed trigger
CASSETTE	Shimano XTR, 9-speed, 11-34t	N/A	Shimano XTR, 9-speed, 11-34t
CHAIN	Shimano 7701 XTR	N/A	Shimano 7701 XTR
CRANKSET	Shimano M-970 XTR	N/A	Shimano M-970 XTR
CHAINRINGS	Shimano XTR 22A/32C/44A	N/A	Shimano XTR 22A/32C/44A
BOTTOM BRACKET	Shimano M-970 XTR	N/A	Shimano M-970 XTR
PEDALS	N/A	N/A	N/A
RIMS	Roval Contrôle, XC race, disc, 24mm	N/A	Roval Contrôle XC race, disc, 24mm
FRONT HUB	Roval Contrôle, XC race, disc, straight pull	N/A	Roval Contrôle XC race, disc, straight pull
REAR HUB	Roval Contrôle, XC race, disc, straight pull	N/A	Roval Contrôle XC race, disc, straight pull
SPOKES	Roval Contrôle, straight pull, alloy nipples by DT Swiss	N/A	Roval Contrôle, straight pull, alloy nipples by DT Swiss
FRONT TIRE	S-Works The Captain 26x2.0", 120 TPI, tubeless ready aramid bead, dual compound	N/A	S-Works The Captain 26x2.0", 120 TPI, tubeless ready aramid bead, dual compound
REAR TIRE	S-Works The Captain 26x2.0", 120 TPI, tubeless ready aramid bead, dual compound	N/A	S-Works The Captain 26x2.0", 120 TPI, tubeless ready aramid bead, dual compound
TUBES	Specialized Ultralite, 6mm, presta	N/A	Specialized Ultralite, 6mm, presta
SADDLE	Specialized Phenom, Titanium rails	N/A	Specialized Women's Ariel MTB, titanium rails
SEAT POST	Thomson straight w/ 12 degree clamp, 367/410mm	Thomson straight w/ 12 degree clamp, 367/410mm	Thomson straight w/ 12 degree clamp, 367/410mm
SEAT BINDER	Alloy collar w/ QR, 36.9mm clamp ID, for carbon frames	Alloy collar w/ QR, 36.9mm clamp ID, for carbon frames	Alloy collar w/ QR, 36.9mm clamp ID, for carbon frames
NOTES	Protective clear coat, derailleur hanger, reflectors, owners manual	Protective clear coat, derailleur hanger, owners manual	Protective clear coat, derailleur hanger, reflectors, owners manual

SAFIRE			
MODEL	S-Works Safire Carbon	S-Works Safire Carbon Frame	
FRAME	All new S-Works Safire FSR FACT 10m carbon Women's specific main triangle, A21 construction, M5 alloy chainstays with Brain mount, FACT 10m carbon seatstays with carbon drive side dropout, Designs for Women geometry, DMD Direct Mount F.Der, full cartridge bearing pivots, 120mm travel	All new S-Works Safire FSR FACT 10m carbon Women's specific main triangle, A21 construction, M5 alloy chainstays with Brain mount, FACT 10m carbon seatstays with carbon drive side dropout, Designs for Women geometry, DMD Direct Mount F.Der, full cartridge bearing pivots, 120mm travel	
REAR SHOCK	Specialized AFR Shock w/ remote Trail Tune inertia valve, adj rebound and Brain Fade, 7.25x1.75"	Specialized AFR Shock w/ remote Trail Tune inertia valve, adj rebound and Brain Fade, 7.25x1.75"	
FORK	Specialized Future Shock S120, 120mm travel, carbon 1 1/8 to 1.5" steerer, Trail Tune inertia valve, adjustable Brain Fade and rebound, piggyback one sided air spring and damper	Specialized Future Shock S120, 120mm travel, carbon 1 1/8 to 1.5" steerer, Trail Tune inertia valve, adjustable Brain Fade and rebound, piggyback one sided air spring and damper	
HEADSET	1 1/8" threadless, Campy spec integrated sealed cartridge bearing	1 1/8" threadless, Campy spec integrated sealed cartridge bearing	
STEM	Thomson CNC alloy, 31.8mm clamp, 5 degree	N/A	
HANDLEBARS	Specialized OS XC low rise carbon bar, 640mm wide, 6 degree up, 8 degree backsweep	N/A	
GRIPS	Specialized Womens MTB, dual density	N/A	
FRONT BRAKE	Magura Marta SL, carbon lever, hydraulic disc, 160mm SL rotor	N/A	
REAR BRAKE	Magura Marta SL, carbon lever, hydraulic disc, 160mm SL rotor	N/A	
BRAKE LEVERS	Magura Marta SL, carbon lever, hydraulic disc	N/A	
FRONT DERAILLEUR	Shimano M970 XTR, DMD top swing	N/A	
REAR DERAILLEUR	SRAM X-0, 9-speed, mid cage	N/A	
SHIFT LEVERS	SRAM X-0, carbon/aluminum 9-speed trigger	N/A	
CASSETTE	Shimano XTR, 9-speed, 11-34t	N/A	
CHAIN	Shimano 7701 XTR	N/A	
CRANKSET	Shimano M-970 XTR	N/A	
CHAINRINGS	Shimano XTR 22A/32C/44A	N/A	
BOTTOM BRACKET	Shimano M-970 XTR	N/A	
PEDALS	N/A	N/A	
RIMS	Roval Contrôle XC race, disc, 24mm	N/A	
FRONT HUB	Roval Contrôle XC race, disc, straight pull	N/A	
REAR HUB	Roval Contrôle XC race, disc, straight pull	N/A	
SPOKES	Roval Contrôle, straight pull, alloy nipples by DT Swiss	N/A	
FRONT TIRE	S-Works The Captain 26x2.0", 120 TPI, tubeless ready aramid bead, dual compound	N/A	
REAR TIRE	S-Works The Captain 26x2.0", 120 TPI, tubeless ready aramid bead, dual compound	N/A	
TUBES	Specialized Ultralite, 6mm, presta	N/A	
SADDLE	Specialized Phenom, Titanium rails	N/A	
SEAT POST	Thomson straight w/ 12 degree clamp, 367/410mm	N/A	
SEAT BINDER	Alloy collar w/ QR, 36.9mm clamp ID, for carbon frames	N/A	
NOTES	Protective clear coat, derailleur hanger, reflectors, owners manual	N/A	

CARBON HT			
MODEL	S-Works SJ HT Carbon Disc	S-Works SJ HT Carbon HT Frame	ALLOY HT
FRAME	S-Works FACT 10m carbon hardtail, A21 constuction, Mono-stay seatstays, forged dropouts w/ disc mount and replaceable derailleur hanger	S-Works FACT 10m carbon hardtail, A21 constuction, Mono-stay seatstays, forged dropouts w/ disc mount and replaceable derailleur hanger	M5 alloy hardtail, fully manipulated DT, TT, SS, CS, ST w/ shared tube Mono-stay seatstays, new larger diameter/stiffer ORE DT/TT, disc mount, Ti brake bosses, replaceable derailleur hanger
REAR SHOCK	N/A	N/A	N/A
FORK	Fox F90 RLC, 90mm travel, rebound/compression adjust, lock out w/ threshold adjust, alloy steerer	N/A	N/A
HEADSET	1 1/8" threadless, Campy spec integrated sealed cartridge bearing	1 1/8" threadless, Campy spec integrated sealed cartridge bearing	N/A
STEM	Thomson CNC alloy, 31.8mm clamp	N/A	N/A
HANDLEBARS	Specialized XC carbon flat 31.8mm bar, 5 degree backsweep, 580mm wide	N/A	N/A
GRIPS	Specialized thin lock on grip, dual density	N/A	N/A
FRONT BRAKE	Magura Marta SL, carbon lever, hydraulic disc, 160mm rotor	N/A	N/A
REAR BRAKE	Magura Marta SL, carbon lever, hydraulic disc, 160mm rotor	N/A	N/A
BRAKE LEVERS	Magura Marta SL, carbon lever, hydraulic disc	N/A	N/A
FRONT DERAILLEUR	Shimano M971 XTR, 34.9 clamp, bottom swing, dual pull	N/A	N/A
REAR DERAILLEUR	New Shimano M972 XTR Shadow	N/A	N/A
SHIFT LEVERS	Shimano XTR Rapid Fire, 9-speed trigger	N/A	N/A
CASSETTE	Shimano XTR, 9-speed, 11-34t	N/A	N/A
CHAIN	Shimano 7701 XTR	N/A	N/A
CRANKSET	Shimano M970 XTR	N/A	N/A
CHAINRINGS	Shimano XTR 22A/32C/44A	N/A	N/A
BOTTOM BRACKET	Shimano M970 XTR	N/A	N/A
PEDALS	N/A	N/A	N/A
RIMS	Roval Contrôle XC race, disc, 24mm	N/A	N/A
FRONT HUB	Roval Contrôle XC race, disc, straight pull	N/A	N/A
REAR HUB	Roval Contrôle XC race, disc, straight pull	N/A	N/A
SPOKES	Roval Contrôle, straight pull, alloy nipples by DT Swiss	N/A	N/A
FRONT TIRE	S-Works Fast Trak LK, 26x2.0", tubeless ready, aramid bead, dual compound	N/A	N/A
REAR TIRE	S-Works Fast Trak LK, 26x2.0", tubeless ready, aramid bead, dual compound	N/A	N/A
TUBES	Specialized Ultralite, 6mm, presta	N/A	N/A
SADDLE	Specialized Phenom, Titanium rails	N/A	N/A
SEAT POST	Specialized carbon single bolt setback 30.9 300/350/400mm	Specialized carbon single bolt setback 30.9 300/350/400mm	Specialized carbon single bolt setback 30.9 300/350/400mm
SEAT BINDER	Alloy single bolt, 36.9mm clamp ID, for carbon frames	Alloy single bolt, 36.9mm clamp ID, for carbon frames	Alloy single bolt, 34.9mm clamp ID
NOTES	Protective clear coat, derailleur hanger, reflectors, owners manual	Protective clear coat, derailleur hanger, owners manual	Protective clear coat, derailleur hanger, owners manual

A FLEET of 2008 bikes awaits journalists at the Specialized press launch in Spain.



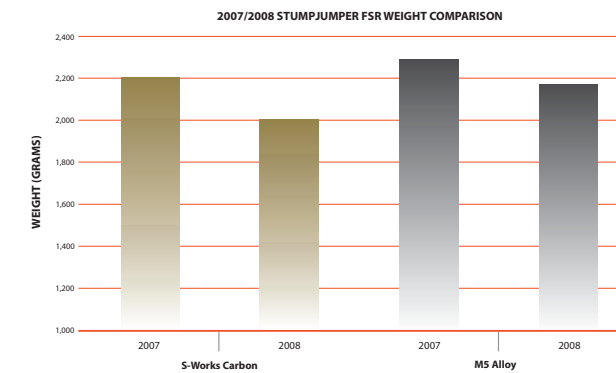


**CHRISTOPH SAUSER** relishing his 2007 UCI Marathon World Championship victory. His sub 20 pound S-Works Epic utilizes a FACT 10m chassis built from the highest strength and highest modulus carbon in the business for requisite toughness and light weight.

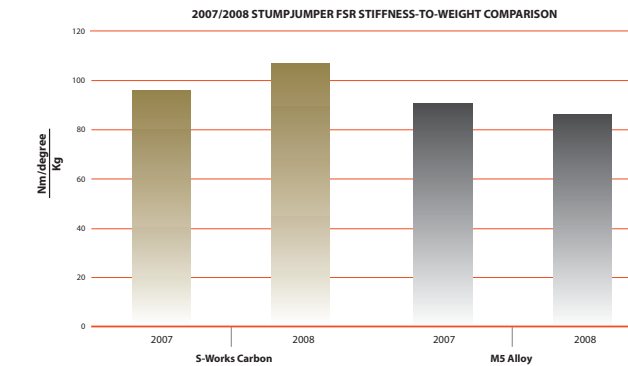
## THE **FACT** OF THE MOUNTAIN

*Functional Advanced Composite Technology Means More Performance*

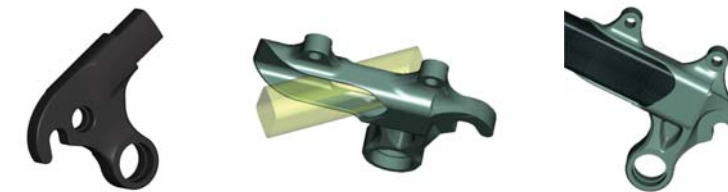
**MORE THAN JUST A TYPE OF MATERIAL,** *FACT (Function Advanced Composite Technology) is a combination of sound engineering, cutting-edge fabrication techniques, intelligent carbon fiber application, tireless prototyping and a rigorous cycle of testing — resulting in the best off-road ride possible.*



**THE FACT** Carbon S-Works Stumpjumper FSR frame is nearly a half-pound lighter than the already feathery standard-issue alloy version.



**STIFFNESS-TO-WEIGHT**, which benefits the rider with better efficiency and handling, is 22% higher with the FACT version of the 2008 S-Works Stumpjumper FSR than its alloy cousin.



**THE FACT** Carbon dropout and chainstay of the S-Works Stumpjumper FSR model is 20% lighter than the aluminum counterpart.

**fact** CARBON



# FUTURE SHOCK AFR SHOCK

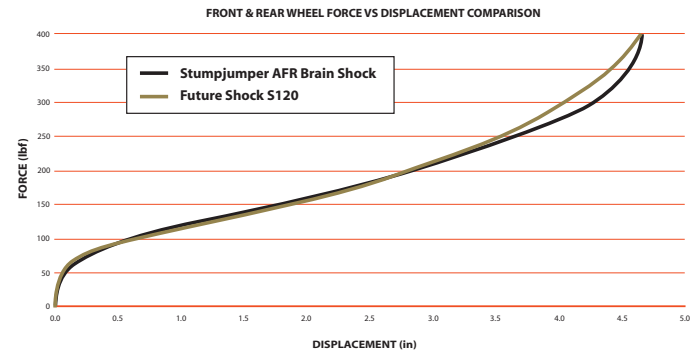
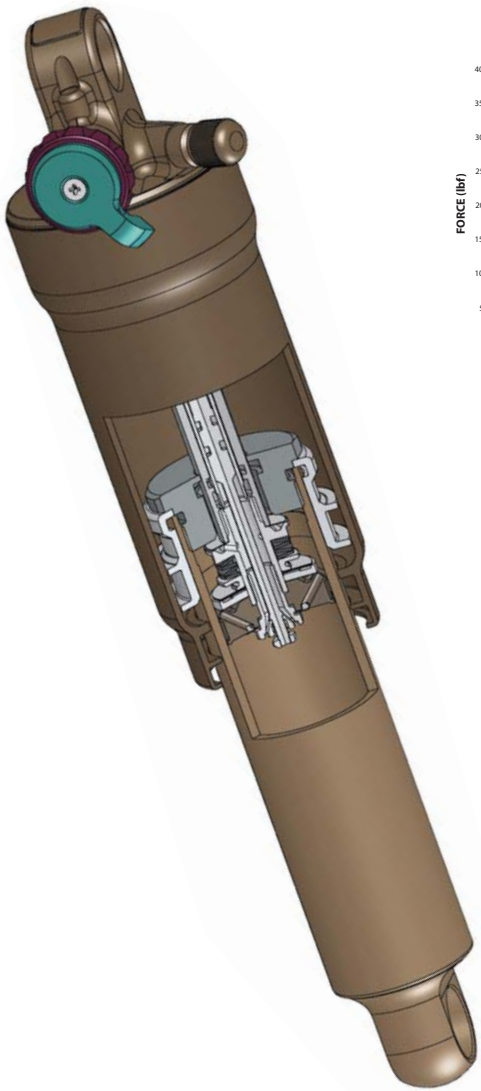
**MADE TO TAKE THE HIT.** Specialized Future Shock™ forks and AFR Shock™ rear shocks are designed as integrated elements of the complete bike and yield best in-class efficiency and bump force management.

**FUTURE SHOCK** The Future Shock S120 fork, on the Stumpjumper FSR and Safire models, and the Future Shock E150, found on the Enduro SL, offer the best bump force management and steering precision at the lightest weight in their respective categories.

## TSI TOTAL SUSPENSION INTEGRATION

**ALL FOR ONE** What happens when you combine hard science with hardcore off-road riding? TSI: Total Suspension Integration. An integrated approach to design that yields the highest-performance full suspension bikes possible.

By developing the fork, shock, chassis and suspension telemetry from scratch with an integrated approach to enhance specific riding experiences, TSI ensures the perfect ride.



**BY DEVELOPING THE FUTURE SHOCK**, S120 fork, FSR linkage and AFR Shock together, the frame, fork and rear suspension work in harmony to provide superior control. This is demonstrated by the nearly identical front and rear force vs. displacement curves.

**THE AFR** (Active Functional Response) Shock models offer maximum performance and durability at an exceptionally low weight. Designed specifically for the frame it's mounted to, each AFR Shock's Spike Valve, damping curve and spring rate perfectly match the telemetry of the suspension linkage, ensuring optimal bump force management and maximum control.

## S120 Six Things You Need to Know About the S120

1. At 1,450 grams the S120 is the lightest, stiffest and best performing XC Trail fork in the world.
2. Fixed 120-mm high-quality travel decreases weight and retains consistent handling.
3. FlowControl Brain technology boosts efficiency and control. (Turn the page to learn more)
4. The unique steerer/crown assembly tapers from 1.125 inches at the top to 1.5 inches at the bottom to improve steering precision and strength while shaving grams.
5. The unique "Buddy System" design places the spring and hydraulic damper in the right leg, eliminating redundant components and decreasing weight by 103 grams.
6. Exhaustively revised lowers and oversized hub/dropout interface improve torsional stiffness by 44% over the next closest competitor to enhance steering precision.



**THE CARBON CROWN/STEERER** found on top-rung S120 models is optimized for carbon fiber construction. The steerer tapers from 1.125 inches at the top to 1.5 inches at the crown allowing a smooth transition from steerer to crown. This makes the best use of the carbon, resulting in greater strength and stiffness with less weight.



**BY DESIGNING** the fork and Roval hub to work as a system, we have increased the thrust surface between the hub and fork, adding torsional rigidity that any rider can feel through increased steering precision. The S120 is compatible with any standard hub, and the standard Roval hub end caps can be changed for compatibility with any standard fork.





## FLOW CONTROL BRAIN

**THE FUTURE SHOCK**  
S120 fork found on  
Stumpjumper FSR  
and Safire models has  
a FlowControl brain  
integrated into its  
right leg.

2  
1  
3

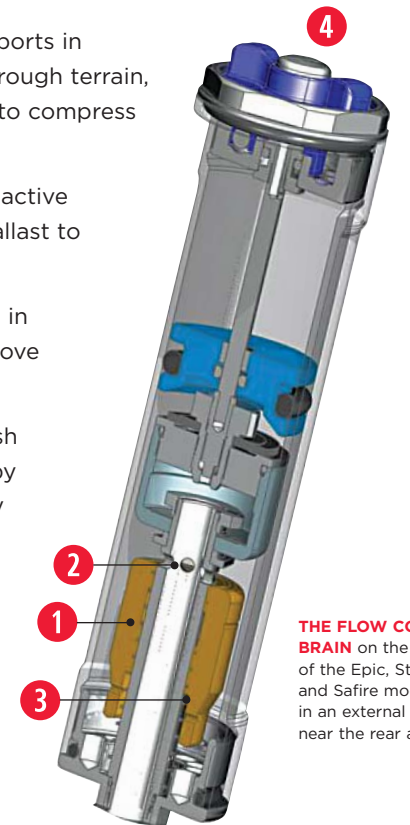
4

### FLOW CONTROL BRAIN

### IT **KNOWS!**

*The FlowControl Brain found in the Epic AFR Shock and in the Future Shock fork and shock of the Stumpjumper FSR and Safire models instantaneously and automatically changes suspension from firm in smooth terrain to fully active in rough terrain, enhancing efficiency and control.*

1. The ballast of the FlowControl Brain covers flow ports in smooth terrain, keeping the ride firmly efficient. In rough terrain, flow ports are exposed, allowing the fork or shock to compress so bump forces can be absorbed.
2. Flow ports allow oil to flow when open, yielding active travel, and prevent oil flow when covered by the ballast to increase efficiency.
3. The finely tuned bias spring holds the ballast up in smooth terrain and allows it to instantaneously move down in rough terrain.
4. The Brain Fade adjuster tunes how firm or plush the suspension is while riding in smooth terrain by controlling how much oil can bypass the primary flow ports. This allows each rider to dial in their preferred plushness.



**THE FLOW CONTROL BRAIN** on the rear end of the Epic, Stumpjumper FSR and Safire models is housed in an external reservoir near the rear axle.



# S-WORKS STUMPJUMPER

EXPERIENCE: XC TRAIL

THE BEST XC TRAIL BIKE

JUST GOT EVEN **BETTER**

*For over 25 years, the Stumpjumper® has been the best bike for the trails that most people ride most often. For 2008, the S-Works Stumpjumper features 120mm of fully integrated FSR travel and two Brain dampers, including one tucked inside the leg of the impossibly light and stiff Future Shock S120 fork.*

**FORMER XC WORLD CHAMPION**  
*Ned Overend is an integral part of the development process for our bikes and equipment.*



S-WORKS STUMPJUMPER

CONTROL YOURSELF

Total Suspension Integration has allowed us to make the new S-Works Stumpjumper the best handling XC Trail bike available. By integrating the design of the Future Shock S120 fork and AFR Shock with Brain, we give you the power to control yourself on the widest range of trails imaginable on a single bike.



Carbon / Red

S-WORKS STUMPJUMPER FSR

- All new S-Works Stumpjumper FSR FACT 10m carbon main triangle frame, Az1 construction, M5 alloy chainstays with Brain mount, FACT 10m carbon seatstays with carbon drive side dropout, DMD Direct Mount F.Der, full cartridge bearing pivots, 120mm travel
- Specialized AFR Shock w/ remote Trail Tune inertia valve, adj rebound and Brain Fade, 7.25x1.75"
- Specialized Future Shock S120, 120mm travel, carbon 1 1/8 to 1.5" steerer, Trail Tune inertia valve, adjustable Brain Fade and rebound, piggyback one sided air spring and damper
- Roval Contrôle XC race wheelset, disc, 24mm rims, straight pull spokes
- S-Works The Captain 26x2.0" tires, 120 tpi, tubeless ready aramid bead, dual compound



Carbon / Red

S-WORKS STUMPJUMPER FSR FRAMESET

- All new S-Works Stumpjumper FSR FACT 10m carbon main triangle, Az1 construction, M5 alloy chainstays with Brain mount, FACT 10m carbon seatstays with carbon drive side dropout, DMD Direct Mount F.Der, full cartridge bearing pivots, 120mm travel
- Specialized AFR Shock w/ remote Trail Tune inertia valve, adj rebound and Brain Fade, 7.25x1.75"
- Specialized Future Shock S120, 120mm travel, carbon 1 1/8 to 1.5" steerer, Trail Tune inertia valve, adjustable Brain Fade and rebound, piggyback one sided air spring and damper

S-Works Stumpjumper Carbon

Size	S	M	L	XL
Seat Tube Length, C-T	406	444	482	533
Top Tube Length (Horizontal)*	556	590	625	645
Top Tube Length (Actual)**	541	574	607	627
Chainstay Length	420	420	420	420
BB Height - Low Setting	335	335	335	335
ST Angle (Actual) - Low Setting	71°	71°	71°	71°
ST Angle (Effective) - Low Setting	74.5°	74.5°	74.5°	74.5°
Head Tube Angle - Low Setting	68.5°	68.5°	68.5°	68.5°

Size	S	M	L	XL
Wheel Base	1085	1121	1158	1180
Standover Height	705	728	738	764
Head Tube Length	128	148	168	188
Handlebar Width	640	640	640	640
Stem Length	70	90	100	110
Crank Length	170	175	175	175
Seatpost Length	367	367	410	410

\* TT is measured horizontally from center of HT to center of ST  
\*\* Actual, measured along the length of the tube  
All measurements are in millimeters unless otherwise noted.



**S-WORKS** SAFIRE

EXPERIENCE: **WOMEN'S XC TRAIL**



WE'VE HIT **PAY DIRT**

*Guaranteed to stoke female mountain bike fiends everywhere, the S-Works Safire™ is the lightest, most efficient and versatile full suspension women's bike for handling rocky trails, technical singletrack, climbing and descending with ease and style. A light and strong FACT carbon frame, patented FSR suspension technology, Total Suspension Integration and women's-specific geometry make the Safire your go-to trail bike for every type of terrain imaginable.*



S-WORKS SAFIRE

THE CODE TO FLOW

If it looks like nothing you’ve even seen before, that’s probably because it is. The Safire may be making its debut appearance in the S-Works lineup, but that doesn’t mean we’ve spared any expense in its design. Aside from its signature women’s-specific geometry, tubing dimensions and components, we’ve equipped this feather-weight rig with smart, trail-tuned FSR suspension—a fully active and fully independent suspension system that gives the rider maximum control and efficiency while eliminating interference from brake forces and chain torque.



Carbon



Carbon

S-WORKS SAFIRE

- All new S-Works Safire FSR FACT 10m carbon Women’s specific main triangle, Az1 construction, M5 alloy chainstays with Brain mount, FACT 10m carbon seatstays with carbon drive side dropout, Designs for Women geometry, DMD Direct Mount F.Der, full cartridge bearing pivots, 120mm travel
- Specialized AFR Shock w/ remote Trail Tune inertia valve, adj rebound and Brain Fade, 7.25x1.75"
- Specialized Future Shock S120, 120mm travel, carbon 1 1/8 to 1.5" steerer, Trail Tune inertia valve, adjustable Brain Fade and rebound, piggyback one sided air spring and damper
- Roval Contrôle, XC race, disc, 24mm
- Specialized Women’s Ariel MTB, titanium rails

S-WORKS SAFIRE FRAMESET

- All new S-Works Safire FSR FACT 10m carbon Women’s specific main triangle frame, Az1 construction, M5 alloy chainstays with Brain mount, FACT 10m carbon seatstays with carbon drive side dropout, Designs for Women geometry, DMD Direct Mount F.Der, full cartridge bearing pivots, 120mm travel
- Specialized AFR Shock w/ remote Trail Tune inertia valve, adj rebound and Brain Fade, 7.25x1.75"
- Specialized Future Shock S120, 120mm travel, carbon 1 1/8 to 1.5" steerer, Trail Tune inertia valve, adjustable Brain Fade and rebound, piggyback one sided air spring and damper

S-Works Safire FSR							
Size	S	M	L	Size	S	M	L
Seat Tube Length, Center to Top	394	431	470	Wheel Base	1068	1093	1134
Top Tube Length (Horizontal)*	542	565	605	Standover Height	690	696	717
Top Tube Length (Actual)**	550	574	612	Head Tube Height	100	120	130
Chainstay Length	420	420	420	Handlebar Width	620	620	620
Bottom Bracket Height - Low Setting	335	335	335	Stem Length	75	90	90
ST Angle (Actual) - Low Setting	71°	71°	71°	Crank Length	170	170	175
ST Angle (Effective) - Low Setting	74.5°	74.5°	74.5°	Seatpost Length	350	350	350
Head Tube Angle - Low Setting	68.5°	68.5°	68.5°	* TT is measured horizontally from center of HT to center of ST			
				** Actual, measured along the length of the tube			
				All measurements are in millimeters unless otherwise noted.			



S-WORKS  
EPIC

EXPERIENCE: COMPETITIVE XC



THE PROOF IS IN THE **PODIUM**

*Your ticket to unrivaled cross-country performance, the S-Works Epic® needs no introduction after its numerous world championship and world cup victories under Specialized team racers like Marathon World Champion Christoph Sauser and Norwegian National Champion Lene Byberg. But with its propensity for unheard of speed and precision handling through technologies like our FACT Carbon construction, AFR rear shock and intuitive FlowControl Brain, who wouldn't take the opportunity to brag a little?*

**MARATHON WORLD CHAMPION** Christoph Sauser  
races every world cup exclusively  
on the S-Works Epic.



S-WORKS  
EPIC

A REAL BRAINIAC

When you've already got the best suspension in the industry on your side, riding with an extra Brain attached is like getting a free ticket to the podium. Our FlowControl Brain is a genius at supercharging efficiency and control—it seamlessly and instantaneously adjusts suspension from firmly efficient over smooth terrain, to fully active for maximum control over rough terrain. We could go into the details about how our engineers have fine tuned the Brain's flow of oil in conjunction with its compression port (also see pgs. 48-49), but why not just test it out and see for yourself?



**LENE SYBANI** on her way to another top ten finish in the women's elite cross-country at the World Cup St-Felicien.



S-WORKS EPIC

- FACT 10m carbon front triangle frame, Az1 construction, M5 aluminum rear triangle, sealed cartridge bearing pivots, 100mm travel, FACT carbon link
- Specialized AFR Shock w/ Flow Control valve, adjustable from HT firm to Trail Tune, air spring, adjustable rebound
- Magura Marta SL brakes, carbon lever, hydraulic disc
- Roval Controle XC race wheelset, disc, 24mm rims, straight pull spokes
- S-Works Fast Trak LK tires, 26x2.0", tubeless ready, aramid bead, dual compound



Carbon / Black

S-WORKS EPIC FRAMESET

- FACT 10m carbon front triangle frame, Az1 construction, M5 aluminum rear triangle, 100mm travel, FACT carbon link
- Specialized AFR Shock w/ Flow Control valve, adjustable from HT firm to Trail Tune, air spring, adjustable rebound
- Specialized carbon single bolt setback seatpost, 30.9 300/350/400mm



Carbon / Black



Flo Red

S-Works Epic Carbon

Size	S	M	L	XL
Seat Tube Length, C-T	394	444	483	533
Top Tube Length (Horizontal)*	554	589	615	641
Top Tube Length (Actual)**	538	572	597	624
Chainstay Length	427	427	427	427
BB Height - Low Setting	331	331	331	331
ST Angle (Actual) - Low Setting	74°	74°	74°	74°
Head Tube Angle - Low Setting	70.5°	70.5°	70.5°	70.5°
Wheel Base	1058	1094	1120	1149

Size	S	M	L	XL
Standover Height	762	769	788	791
Head Tube Height	124	136	146	176
Handlebar Width	640	640	640	640
Stem Length	70	90	110	120
Crank Length	170	175	175	175
Seatpost Length	300	350	400	400

\* TT is measured horizontally from center of HT to center of ST  
\*\* Actual, measured along the length of the tube  
All measurements are in millimeters unless otherwise noted.



**S-WORKS** ENDURO SL

EXPERIENCE: **ALL MOUNTAIN**



Carbon Keyline

**MAKING SHUTTLES  
AND CHAIRLIFTS OBSOLETE**

*At 27 pounds and six inches of travel, you have no excuse to walk your bike up the mountain. The do-it-all S-Works Enduro® SL is built to climb higher and descend farther than the competition to give the aggressive all mountain rider the perfect weapon for going far, going fast and going big. Fully equipped for your assault on the mountain with a durable blend of FACT 10m carbon and alloy frame materials and our own high performance E150 Future Shock fork and AFR rear shock.*

**"DEADLY NEDLY"** Overend leads a lucky crew of Riders Club members through the rocky trails of Fruita, Colorado on his lightweight Enduro SL.



S-WORKS  
ENDURO SL  
BEST AT HIGH SPEEDS

Right between the strong and lightweight carbon main triangle and M5 alloy rear triangle that give the S-Works Enduro its durability and speed, you'll find the sweet spot—otherwise know as the AFR Shock. An integral part of the FSR suspension, this proprietary rear shock is engineered to help our bikes (Enduro, Epic and Stumpjumper models) deliver maximum control and efficiency to the rider. Internally, the Spike Valve ensures that the shock reacts appropriately to small and large impacts for sure-fire handling, and the L-VAS (Large Volume Air Spring) matches travel to bump force for optimized control.



S-WORKS ENDURO SL

- S-Works Enduro FACT 10m carbon main triangle frame, Az1 construction, M5 rear triangle, full cartridge bearing pivots, 150mm travel
- Specialized AFR Shock w/ Spike valve, air spring, adjustable rebound and low speed compression, 7.875x2.25"
- S-Works Future Shock e150SL, lightweight machined dual crown w/ integrated stem, 150mm travel, rebound, compresion and travel adjust, 25mm thru axle, lightweight machined alloy steerer.
- Avid Juicy Ultimate brakes, hydraulic disc
- Roval Traversée disc wheelset, 26mm rims, straight pull spokes



Carbon Keyline



Carbon Keyline

S-WORKS ENDURO SL FRAMESET

- S-Works Enduro FACT 10m carbon main triangle frame, Az1 construction, M5 rear triangle, full cartridge bearing pivots, 150mm travel
- Specialized AFR Shock w/ Spike valve, air spring, adjustable rebound and low speed compression, 7.875x2.25"
- S-Works Future Shock e150SL, lightweight machined dual crown w/ integrated stem, 150mm travel, rebound, compresion and travel adjust, 25mm thru axle, lightweight machined alloy steerer.

S-Works Enduro SL

Size	S	M	L	XL
Seat Tube Length - C to T	421	444	483	533
Top Tube Length	559	591	620	647
Top Tube Length	545	574	602	630
Chainstay Length	421	421	421	421
Bottom Bracket Height - Low	356	356	356	356
Bottom Bracket Height - High	367	367	367	367
Seat Tube Angle - Low	71.9°	71.9°	71.9°	71.9°
Seat Tube Angle - High	72.8°	72.8°	72.8°	72.8°
Seat Tube Angle - Low	74°	74°	74°	74°
Seat Tube Angle - High	73.1°	73.1°	73.1°	73.1°
Head Tube Angle - Low	67°	67°	67°	67°
Head Tube Angle - High	67.9°	67.9°	67.9°	67.9°
Wheel Base	1115	1147	1177	1205
Standover Height	742	748	762	782
Head Tube Height	129	139	153	179
Handlebar Width	660	660	660	660
Stem Length	60	80	80	100
Crank Length	170	175	175	175
Seatpost Length	367	367	410	410

\* TT is measured horizontally from center of HT to center of ST  
\*\* Actual, measured along the length of the tube  
\*\*\* Number reflects fork travel setting

A MOMENT OF ZEN with the Enduro. He climbed the mountain. Railed the descent. Passed his friends on the way down. And still had time to change in peace (sans photographer, that is!).



S-WORKS CARBON HARDTAIL

EXPERIENCE: COMPETITIVE XC

S-WORKS CARBON HT

- S-Works FACT 10m carbon hardtail frame, A21 constuction, Mono-stay seatstays, forged dropouts w/ disc mount and replaceable derailleur hanger
  - Magura Marta SL brakes, carbon lever, hydraulic disc
  - Roval Contrôle XC race wheelset, disc, 24mm rims, straight pull spokes
  - Specialized Phenom saddle, Titanium rails
  - Specialized carbon single bolt setback seatpost, 30.9 300/350/400mm
- \* Also available as frame only

Carbon / Black

LENE BYBERG, MTB  
Factory Team racer  
and Norwegian  
National Champion.

LIGHT IT UP

The S-Works Carbon Hardtail is the featherweight choice of racers and those who like to go fast on smooth trails and fire roads.



Flo Red / White

S-WORKS HT FRAMESET

- M5 alloy hardtail frame, fully manipulated DT, TT, SS, CS, ST w/ shared tube Mono-stay seatstays, new larger diameter/stiffer ORE DT/TT, disc mount, Ti brake bosses, replaceable derailleur hanger
- Specialized carbon single bolt setback seatpost 30.9 300/350/400mm

S-Works Carbon HT

Size	15.5	17	18	19	21
Seat Tube Length, C T	394	432	457	483	533
Top Tube Length*	555	585	600	615	640
Top Tube Length**	531	561	574	590	617
Chainstay Length	424	424	424	424	424
Bottom Bracketed Height	301	301	301	301	301
Seat Tube Angle	73°	73°	73°	73°	73°
Head Tube Angle	71°	71°	71°	71°	71°
Wheel Base	1028	1058	1073	1089	1115
Standover Height	761	782	793	810	843
Head Tube Length	125	135	135	145	165
Handlebar Width	600	600	600	600	600
Stem Length	70	90	100	110	120
Crank Length	170	175	175	175	175
Seatpost Length	300	560	350	400	400

\* TT is measured horizontally from center of HT to center of ST  
\*\*Actual, measured along the length of the tube  
All measurements are in millimeters unless otherwise noted.



You can never be too **SPECIALIZED**

**WARNING:** The actions depicted in this catalog are potentially dangerous. The riders seen are experienced experts or professionals. Refer to your owner's manuals for instructions regarding the safe use of your bicycle or equipment. Do not attempt to duplicate any stunts that are beyond the capabilities of your bicycle or your own capabilities. Always wear the appropriate safety equipment.

For warranty information, please visit [www.specialized.com](http://www.specialized.com).

© 2007-2008, Specialized Bicycle Components, Inc.  
Printed in USA Part # 7608-0026

This catalog is printed  
on recycled paper.  
Please recycle it again.



#### Mixed Sources

Product group from well-managed  
forests, controlled sources and  
recycled wood or fiber

[www.fsc.org](http://www.fsc.org) Cert no. SGS-COC-003338  
© 1996 Forest Stewardship Council

