

1993  
Catalog

Bicycles  
for  
children  
to  
adults.

**JAZZ**  
BY TREK



**R**ide for fun. Ride for exercise. Ride your dreams. However you ride, ride a Jazz Bicycle. We have bikes for tikes, bikes for kids, bikes for teens and bikes for adults, all designed by Trek U.S.A.



Made with the same high quality standards as Trek Bikes, the Jazz line includes a lifetime warranty (some restrictions apply). They also have name brand components that are recognized for their quality,



value and performance. You'll find the Jazz line at only the best bicycle Dealers who offer only the best service. \* If you enjoy bicycle riding, we hope you and your family will enjoy riding a Jazz.

Teen & up

STREETLIFE

Teen & up

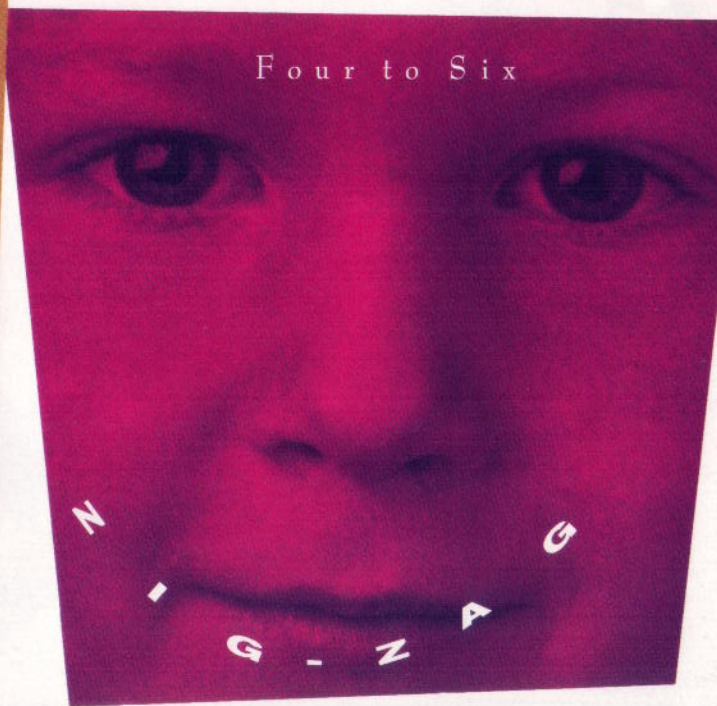
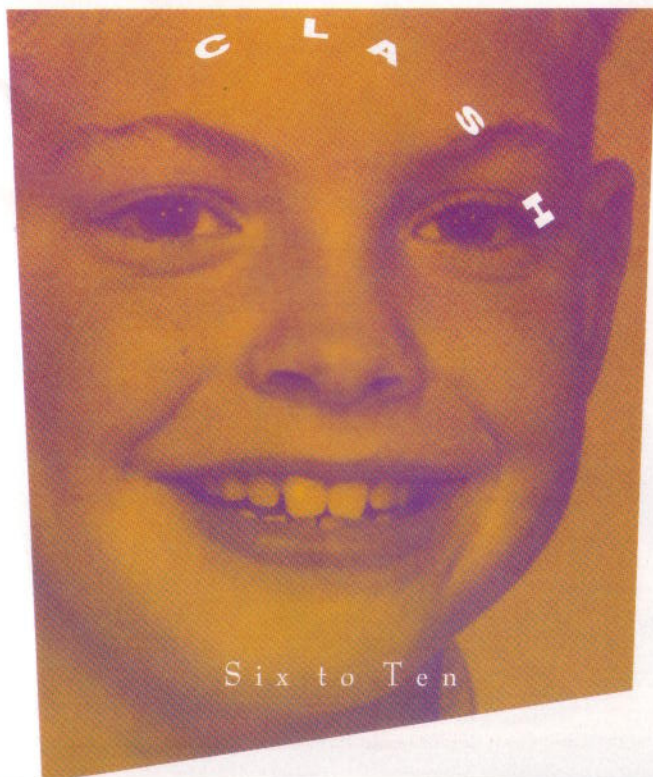
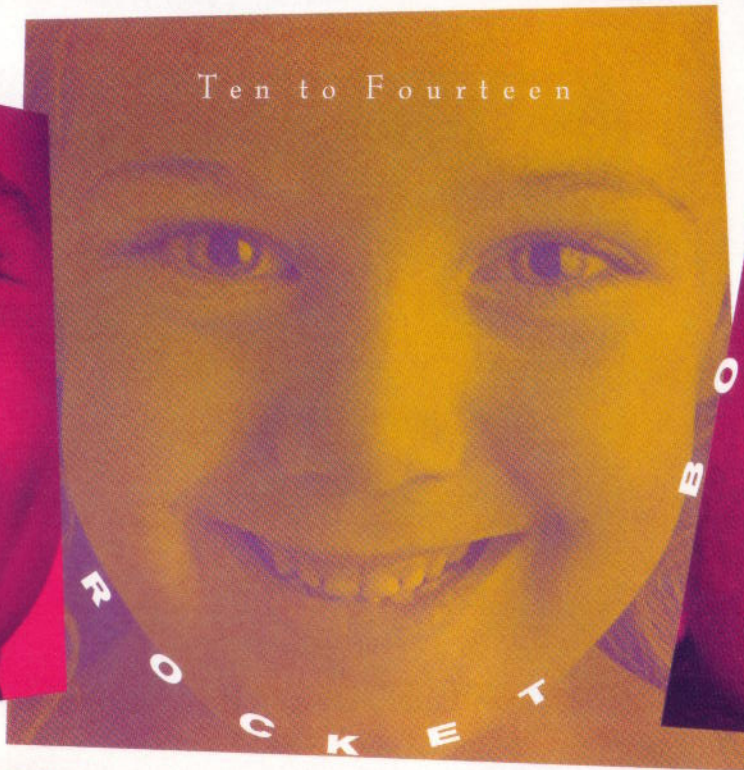
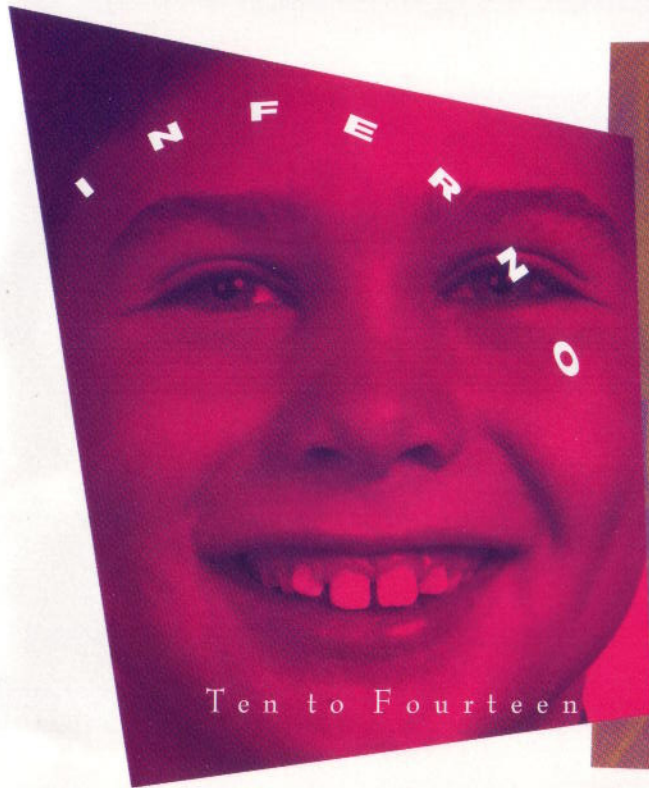
CALYPSO

CRUISER

CLASSIC LATITUDE

Teen & up







This Trail ATB has a  
hi-tensile steel frame  
with a lightweight

Cro-Moly seat

tube. \* SR

cotterless crank

\* 26" wheel with

26" x 2.0" tires \*

Quick release front

wheel \* Dia Compe

cantilever brakes with

levers that adjust to

individual hand sizes

\* 15 speed Shimano

SIS thumb shifters

\* Frame Sizes:

14.5", 16.5", 18",

19.5", 21", 22.5",

17" Women's.



The Shimano  
SIS shifting  
system clicks into  
gear accurately  
and easily.



Men's and Women's  
in Red or Teal



Accessory fittings  
include waterbottle  
and rear rack  
mounts







GripShift allows you to twist shift into gear, so you can keep your hands securely on the bike.

Men's and Women's in Deep Forest Green ➤



An around town and country durable

steel frame with Cro-Moly seat tube

☀ 700c alloy rims

with 700c x 35"

Trek MultiTrack

tires ☀ Shimano 6 speed with GripShift

shifting ☀ Dia

Compe cantilever

brakes with levers

that adjust to

individual hand sizes.

☀ Frame Sizes:

17", 19", 21", 23",

17" Women's,

20" Women's

STREET LIFE



Six speeds add to the comfortable ride of this bicycle for metro or rural riding



- A retro cantilever design in a 19" frame made of hi-tensile steel
- Shimano Tourney derailleur, GripShift 6 speed shifter, alloy side pull brakes
- Alloy rims, stainless steel spokes, 36 hole nutted hubs, gumwall
- 26" x 2.125" tires
- Full foam grips



Men's in Black

GripShift allows you to twist shift into each gear, so you can keep your hands securely on the bike.



Women's in Teal



Comfortable saddle  
with cushioning  
springs and wide  
seating area.



Men's in Red

Shimano coaster  
brake, one  
piece crank

Rubber  
(barefoot) pedals



Women's in Purple

A simple, straight  
forward bicycle.  
Single speed and  
coaster brake are  
great for the beach  
or around the  
neighborhood. A  
retro cantilever design  
in a 19" frame made  
of hi-tensile steel.

Alloy rims,  
stainless spokes, 36  
hole nitted hubs,  
26" x 2.125"  
whitewall tires



C  
R  
U  
I  
S  
E  
R  
C  
L  
A  
S  
S  
I  
C



A youth suspension  
ATB designed with a  
low stand over  
height and a  
proportionally  
sized SR



7001 Duo Track  
suspension fork  
14" frame is a  
rugged combination  
of Cro-Moly and  
hi-tensile steel  
24" x 1.5" alloy  
rims with 24" x 2.0"  
tire DiaCompe  
cantilever brakes  
15 speed Shimano  
gears with SIS  
thumb shifter.

Suspension is the hottest trend in the sport of mountain biking. The Inferno has been proportionally designed and specified for the younger ATB rider.



Bar end equipped, just like the off-road race bikes. Brake levers that adjust for hand size of younger ATB riders.

Boy's only, in Silver with Black head tube



Triple chainrings offers gearing for any terrain.

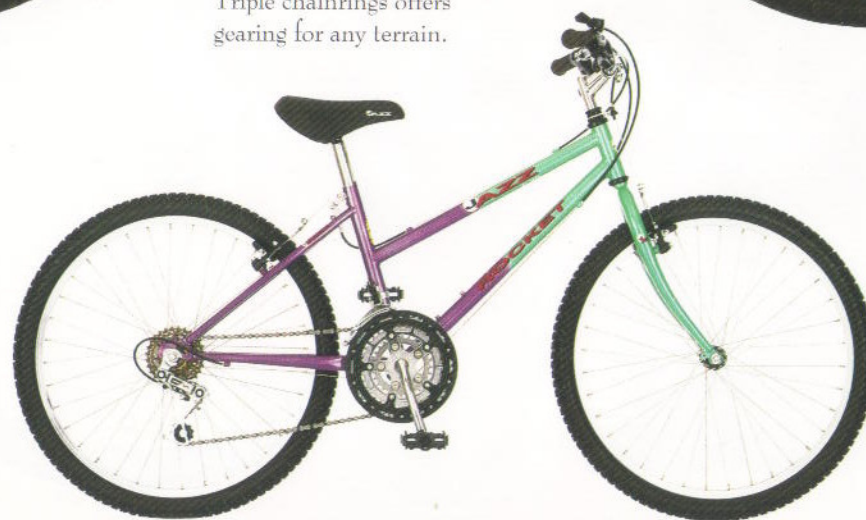


Boy's in Blue to  
Black fade



Triple chainrings offers  
gearing for any terrain.

15 speed Shimano gears  
with SIS thumbshifters  
allows rider to click into  
each gear accurately  
and easily.



Girl's in Iris to  
Mint Green fade

All the performance  
of an adult moun-  
tain bike, but sized  
proportionally for a  
younger rider \* 14"  
frame in a combina-  
tion of Cro-Moly  
and hi-tensile steel  
\* 24" x 1.5" alloy  
rims with 24" x 2.0"  
tire \* DiaCompe  
cantilever brakes  
with levers that  
adjust to the hand  
size of younger  
ATB riders.







# BOLD MOVES

Kids are hard on bikes

and this ATB is

designed to be

rugged, yet easy

to ride \* Forged

steel crank with

double chainguards to

keep chain on line and

protect rider \*

DiaCompe cantilever

brakes with levers that

adjust to the hand size

of younger ATB

riders \*

5 speed

Shimano

SIS shifting

for smooth,

precise shifts.



◀ Girl's in Blue to Pink fade

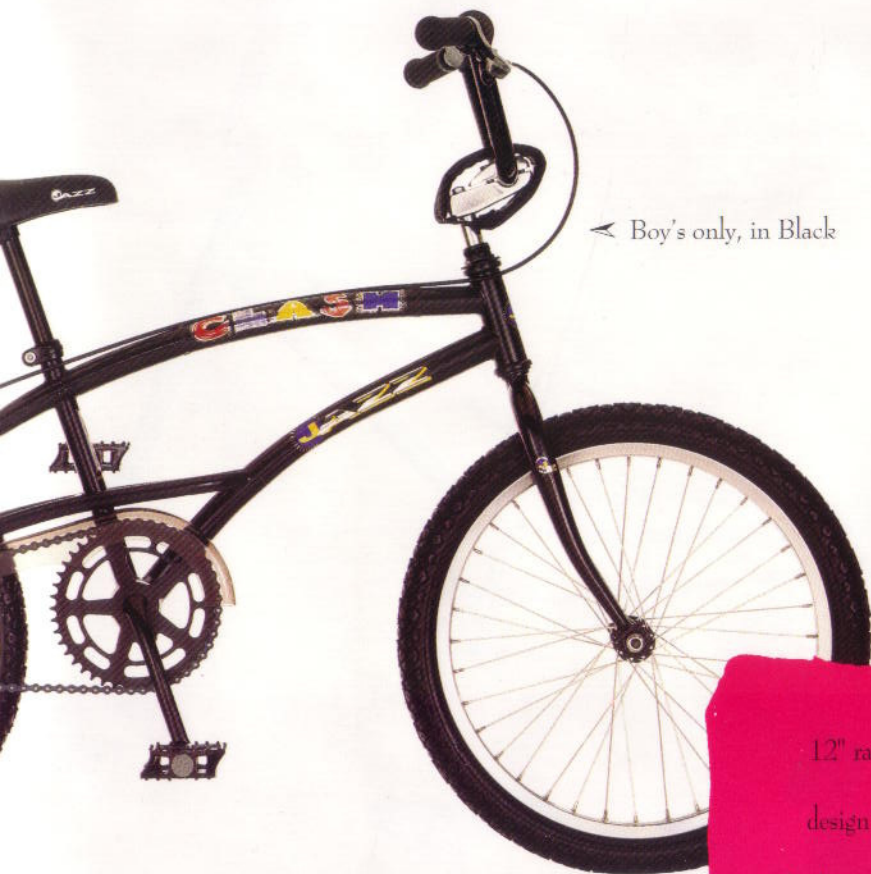


◀ Boy's in Purple to Gold fade



◀ Wide, aggressive tread tires add stability and traction. Lightweight alloy rims for better and safer braking.





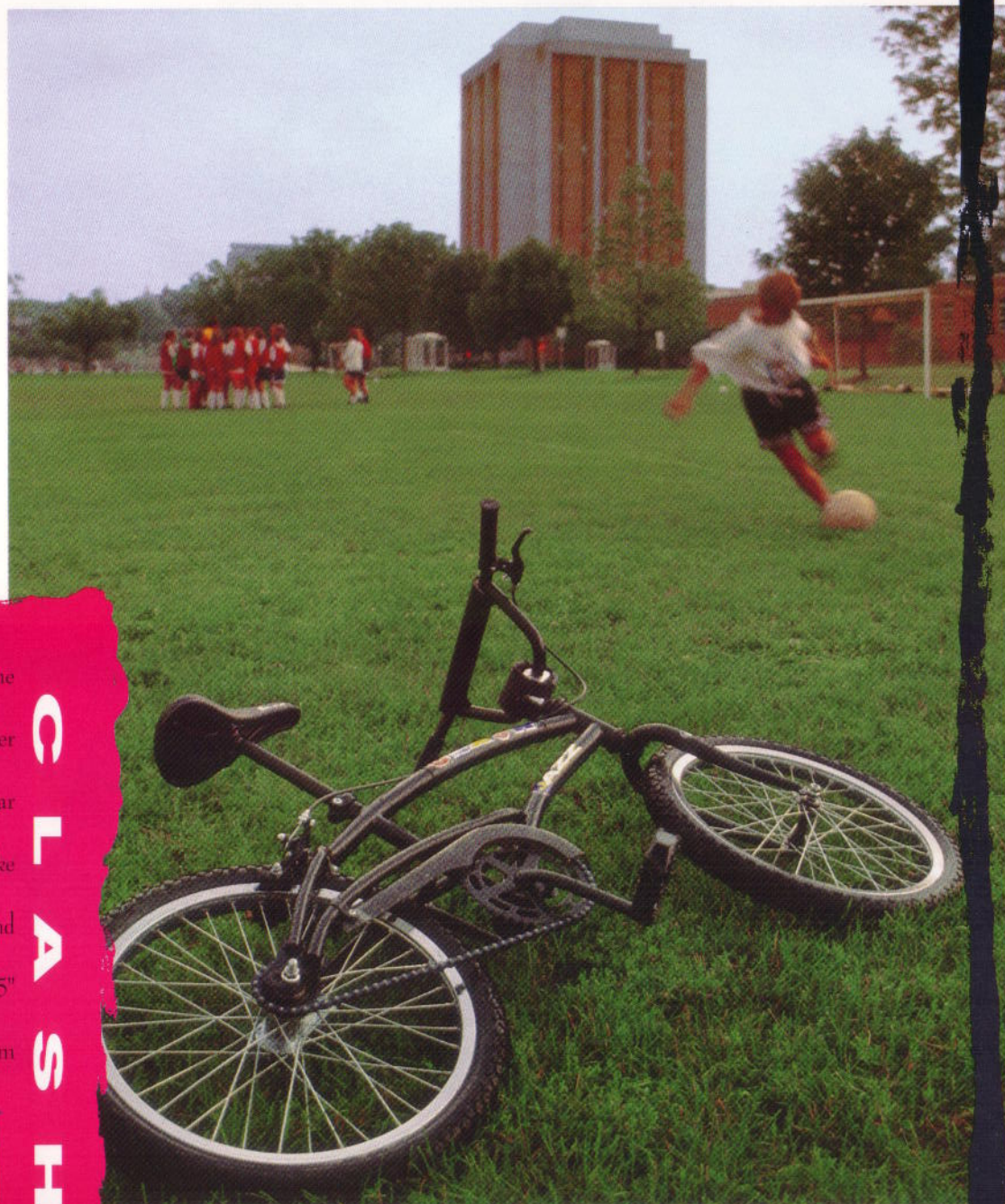
◀ Boy's only, in Black

▲  
Radical frame design features over size, hi-tensile steel tubing. Elevated chain stay for maximum clearance.

12" radical frame  
design ✨ Coaster  
brake and alloy rear  
hand brake make  
stopping easy and  
safe ✨ 20" x 1.75"  
steel rim



C  
L  
A  
S  
H





Designed for the 4-6

year old

rider

with easy

to reach

handlebars and a low

stand over height

\* 9 1/2" hi-tensile

steel frame \* 20"

wheel bike with

20" x 2.125" tires

\* Coaster brake

equipped for safe,

easy braking.



Girl's model in Teal or Purple

Wide, aggressive tread tires add stability and traction.





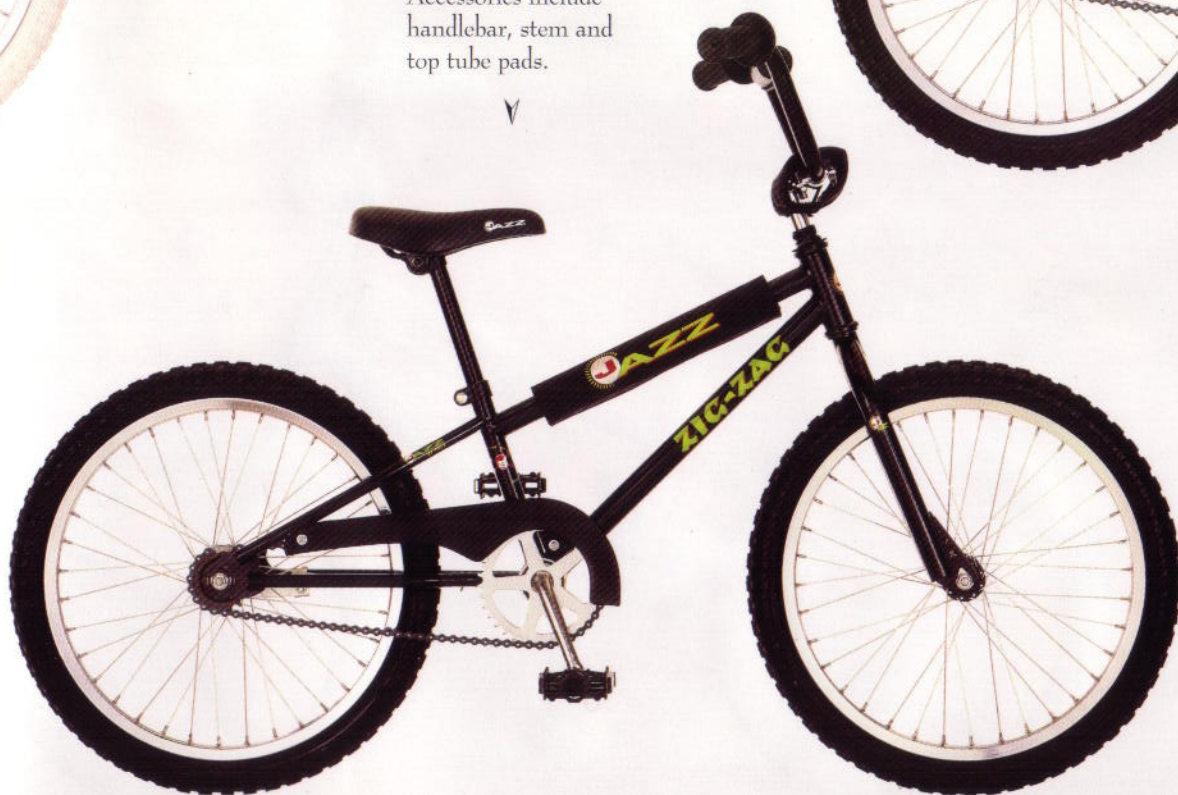
Boy's in Black or Red >



Accessories include  
handlebar, stem and  
top tube pads.



Chain guard for  
rider protection  
and to keep chain  
in line.





The first two  
wheeler. Designed  
for the  
beginning  
rider with  
training  
wheels and a low  
stand over height. \*  
Girl's and Boy's 8"  
hi-tensile steel frame  
\* 16" wheel bike  
with a with coaster  
brake Accessories  
include handlebar,  
stem and top tube  
pads.



◀ Girl's in Princess Pink

▲  
Chain guard for rider protection  
and to keep chain in line.

▲  
Training  
wheels are  
removable as  
the rider's  
confidence  
and balance  
improves. ➤



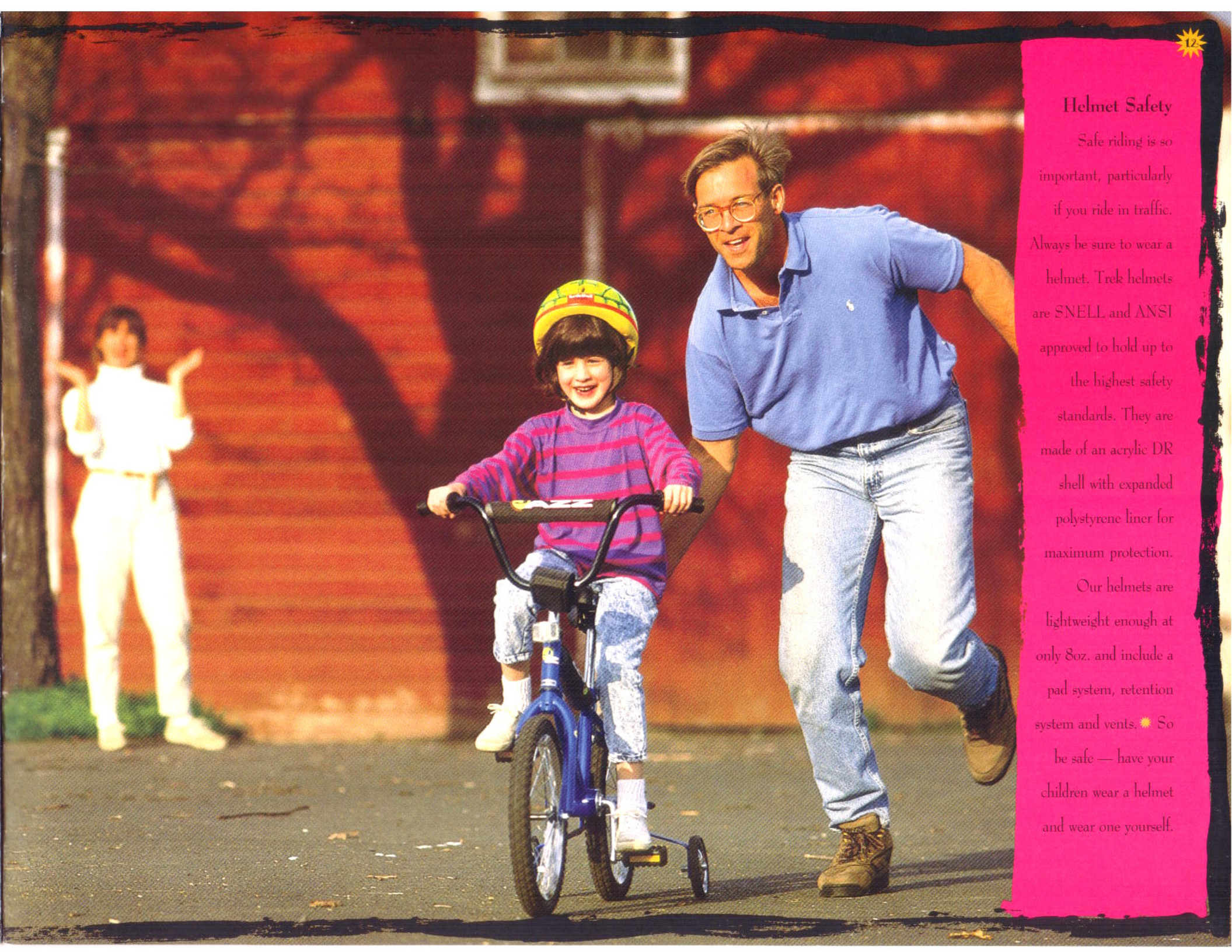
◀ Boy's in Blue



## Helmet Safety

Safe riding is so important, particularly if you ride in traffic. Always be sure to wear a helmet. Trek helmets are SNELL and ANSI approved to hold up to the highest safety standards. They are made of an acrylic DR shell with expanded polystyrene liner for maximum protection.

Our helmets are lightweight enough at only 8oz. and include a pad system, retention system and vents. ☀ So be safe — have your children wear a helmet and wear one yourself.





All specifications in

this catalog are

subject to change

without notice.

Trek Bicycle Corporation • 801 West Madison Street • P.O. Box 183 • Waterloo, Wisconsin 53594

Your Authorized Jazz

Dealer Is ➤

1993 Trek Bicycle Corporation