



MOUNTAIN

09

MTB



TREK

MOUNTAIN

08

TREKBIKES.COM



This page:
Raider Ridge Trail,
Durango, Colorado

Front Cover:
Copper Canyon,
Mexico



Raider Ridge Trail,
Durango, Colorado

2009 Trek Mountain Bikes



Fuel EX10

If you could only have one bike on a singletrack-laden desert island, the Fuel EX is it.



Remedy18

Drops, jumps and nasty descents are the Remedy's specialty.



Top Fuel26

The weapon of choice for any serious cross-country athlete.



Session 8834

The ideal downhill race or freeride machine, wrapped in a lightweight package.



69er40

Have it all—the ultimate singlespeed trail, race, everyday bike.



Elite44

The purest race bike for XC.



Hardtail54

The perfect fit for singletrack adventure or durable transportation.



WSD60

A complete line of bikes that deliver a difference for female riders.

Accessories70

Specifications74

Geometries79

Lifetime Warranty80



We Believe in Singletrack.

To some, it's a simple dirt path leading out to nowhere. But to mountain bikers, it's singletrack. It all starts with one ride: a couple miles, a few hills, some bumps here and there. And after the day is done, there just has to be more. A weekend turns into a road trip, and, soon enough, trails became a part of life.

It's that way for us here at Trek.

We have a core belief—that a trail ride improves every day, and that every ride can be improved. And it's that single-minded focus that drives us to bring better bikes and better trails to the world around you.

While we ride the world over, there really is no place like home, and we've made every effort to make sure our home is as rugged and challenging as the world at large. Jim's Trails, our home trails, are a handbuilt network of manicured perfection that replicates the berms and drops, benchcuts and switchbacks that made us all get started in the first place. Jim's Trails is where we go to remind us why we do what we do—to improve every day and every ride.



Dream. Design. Ride.

Trek is committed to making the best mountain bikes on the planet. It's no easy task, but we think we've hit on the right formula: dream, design, ride.

Of course, there's more to the equation. Like investing in a team of experts from the fields of engineering, design and testing. We also invested in the tools they need to succeed: The top design software for creating effective prototypes. The best fabrication facilities money can buy. A West Coast test lab with the right equipment to analyze performance. A roster of testers calibrated to distinguish even the most minute difference. And a direct line to the leading suspension manufacturers.

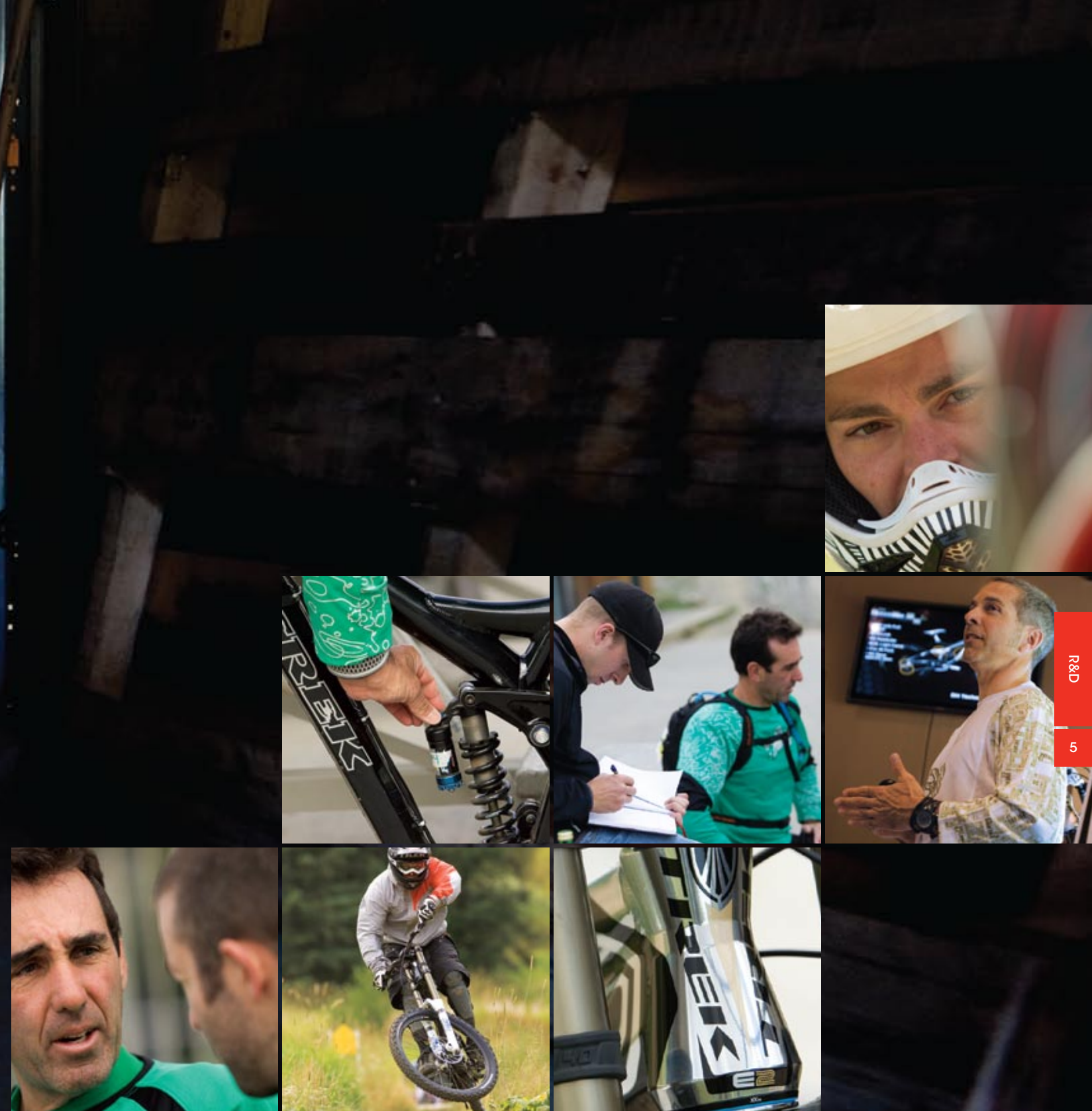
The return on those investments is yours to experience every time you climb on the saddle.

Testing and Tuning.

Making the best mountain bikes in the world is a great business to be in. If you're like us, you know there's no better day in "the office" than a day spent riding the trails in an exotic location.

Of course, when your goal is to be the best, trail time isn't just for pure enjoyment. It's a lot of work, involving massive amounts of travel and testing time. And repetition. We perform blind tests on different platforms and shock ratios. We ride the same trails over and over and over, and when we get home, we analyze every observation we record.

It's a meticulous process that leaves some of our test riders wondering if there really is too much of a good thing. But at the end of the day, we're confident our testing time will pay off in the best bikes ever made.



Suspension Intelligence.

At the heart of every Trek full suspension mountain bike is the belief that technology can improve the ride. Higher performance. Greater control. Lighter weight. In every bike.

Now that's intelligent.

ABP (ACTIVE BRAKING PIVOT). ABP™ is a revolutionary, patent-pending technology that puts the rear suspension pivot concentric to the rear wheel axle. Most rear suspension systems are compromised with the brakes applied. Not so for bikes with ABP brakes—the system remains active, allowing the shock to function in every situation. This allows better, more effective braking, resulting in higher speed and more control. It's the ABP difference.

FULL FLOATER. Traditional suspension systems attach the rear shock to a fixed mount on the frame. Full Floater™ connects the shock to the EVO Link™ on the top and the extension of the swingarm on the bottom. This allows the shock to “float” between two suspended attachment points, allowing otherwise unachievable fine tuning of the system by Trek's engineers. So you get full use of the shock stroke with the best small bump compliance, great midstroke control and seemingly bottomless travel.

EVO LINK. EVO Link is the evolution of the traditional rocker link from a plate-and-bolt style design to a one-piece design. This new design allows advanced engineering to provide the highest strength-to-weight ratio possible. EVO Link does away with multiple pieces, and creates the simplest, lightest, stiffest rocker link system around.

E2 TAPERED STEERER. E2™ tapered frame and fork technology employs an ultra-stiff, 1.5" lower-diameter steerer that tapers to a 1 1/8" upper. This system allows the lightweight benefits of a traditional 1 1/8" with the stiffness of a 1.5", giving better high-speed stability, more precise steering and more control in all situations.



ABP (ACTIVE BRAKING PIVOT).
The most active rear suspension.



EVO LINK.
The lightest, stiffest rocker link system around.



E2 TAPERED STEERER.
High-speed stability and more precise steering.



FULL FLOATER.
Seemingly bottomless travel.

Carbon Fiber, Precisely.

Precision isn't something to laugh at—it's what separates the leaders from the followers. And the pursuit of creating the most accurate, precise mountain bike on the planet is what sets Trek mountain bikes apart from all the others.

OCLV NET MOLDING. The width of a human hair is roughly .0019". Most machined surfaces have tolerances just greater than that. The tolerance of an OCLV® Net Molded surface is +/- .001", just less than half that of a human hair.

OCLV Net Molding is a process that eliminates the use of aluminum inserts at key interfaces such as the bottom bracket, headset and suspension bearings. The integrity and alignment of these interfaces are vital to the proper functioning of every mountain bike.

By creating almost perfectly-aligned surfaces, every moving part can function as it's intended—it's what creates world-class steering, suspension that performs exactly as prescribed and stiffness that has no comparison.

90MM BOTTOM BRACKET. Using Net Molding Carbon technology and Precision Fit Sockets™ to place the bottom bracket bearings directly into the frame creates a unique, 90mm wide bottom bracket (BB90™) that delivers 33% more lateral down tube stiffness and no bearing distortion under extreme load—that means no more creaking or rattling, even during the hardest climb or fastest finish. The narrower width gives you the option to run a 2x9 drivetrain for a more efficient pedal stroke. And fewer moving parts means it's lighter and much easier to assemble or service.

OFF-ROAD SEATMAST. New for 2009 is the world's first no-cut off-road seatmast. Found on the Elite 9.9 SSL hardtail and the Top Fuel 9.9 SSL, 9.8 and 9.8 WSD, this seatmast provides unprecedented stiffness and weight savings, without the hassle and worry of cutting your frame.





FUEL EX



FUEL EX

Born from Trail.

There’s a certain irony about finding the ultimate trail bike: after pedaling it once, your focus moves from the bike to the trail itself. You know the kind—technical rock gardens, twisty high-speed mountain descents, long climbs up grueling terrain that all pay off with a single overlook. True, all-day trail riding. It’s what the Fuel EX lives for.

01 SUSPENSION INTELLIGENCE. Every Fuel EX is optimized for efficient pedaling and great bump compliance, with 120mm of rear wheel travel. At the Fuel EX 7 and above, Active Braking Pivot (ABP™) and Full Floater™ give the most active suspension under braking, with seemingly bottomless travel. The top-level Fuel EX 9.9 and 9.8 OCLV™ Carbon-framed versions transform an already light and nimble machine into a lighter, stiffer, more agile bike with technologies only found on a Trek.

02 CUSTOM TUNED. A custom-tuned rear shock enhances the suspension action. This year’s Fuel EX 7 and above receive an extra volume Fox “XV” Can shock that delivers even better small bump compliance than last year’s. The top level Fuel EX 9.8 and 9.9 are equipped with custom Fox 120mm forks featuring an E2™ tapered steerer.

03 THE PERFECT FIT. The Fuel EX frame geometry focuses on all-day comfort, and a balance of high-speed descending abilities and excellent climbing qualities. With five sizes to choose from, plus models specific to women, the perfect fit is well within reach.

04 TRAVIS BROWN – Olympian, U.S. Marathon National Champion, Trek Product Developer since 1994. Durango, Colorado: “If I could only have one bike on a singletrack-laden desert island, the Fuel EX is it. I’ve used this bike in cross country races, and even short track races, and then taken it for the long weekend in Moab to ride with friends on long travel bikes. It gives me the feeling of way more than 120mm of travel, all without losing snappy pedaling efficiency. And the E2 front end is stiff in a way I am only used to feeling on double crown forks.”

04 TRAVIS BROWN
Olympian, U.S. Marathon National
Champion, Trek Product Developer
since 1994. Durango, Colorado.

03 THE PERFECT FIT.
The balanced geometry lets you
descend rapidly, climb efficiently,
and stay comfortable all day long.

01 SUSPENSION INTELLIGENCE.
Active Braking Pivot (ABP) and
Full Floater give the most active
suspension under braking.

02 CUSTOM TUNED.
Custom tuned Fox “XV” Can rear shock and fork
delivers improved small bump compliance.
Featured on Fuel EX 7 and above.

*Animas Mountain Trail,
Durango, Colorado*

Fuel EX 9.9™

FRAME OCLV Black Carbon w/ABP, Full Floater, E2 head tube, OCLV Carbon EVO Link, oversized bearings, 120mm travel

FRONT SUSPENSION Fox RP24, custom for Trek, "trail tuned" w/4-position platform to lockout, air adjust, rebound, E2 alloy steerer, 120mm

REAR SUSPENSION Fox Float RP23 XV Air Can, custom "trail tuned" w/Pro Pedal, rebound; 7.5x2.0"

WHEELS Bontrager Rhythm Pro wheel system, 28mm w/Scandium rims, tubeless ready

CRANK Shimano XTR 44/32/22

REAR DERAILLEUR SRAM X-0

SIZES 15.5, 17.5, 18.5, 19.5, 21.5"

COLOR Onyx Carbon

Frame available.



Fuel EX 9.8™

FRAME OCLV Black Carbon w/ABP, Full Floater, E2 head tube, magnesium EVO Link, oversized bearings, 120mm travel

FRONT SUSPENSION Fox F120 RL, custom for Trek, "trail tuned" w/air adjust, lockout, rebound, E2 alloy steerer, 120mm

REAR SUSPENSION Fox Float RP23 XV Air Can, custom "trail tuned" w/Pro Pedal, rebound; 7.5x2.0"

WHEELS Bontrager Rhythm Elite wheel system, 28mm, tubeless ready

CRANK Shimano Deore XT 44/32/22

REAR DERAILLEUR Shimano Deore XT "Shadow"

SIZES 15.5, 17.5, 18.5, 19.5, 21.5"

COLOR Pearl White Carbon



Fuel EX 9™

FRAME Alpha Red Aluminum w/ABP, Full Floater, alloy EVO Link, oversized bearings, 120mm travel

FRONT SUSPENSION Fox RP24, custom for Trek, "trail tuned" w/4-position platform to lockout, air adjust, rebound, alloy steerer, 130mm

REAR SUSPENSION Fox Float RP23 XV Air Can, custom "trail tuned" w/Pro Pedal, rebound; 7.5x2.0"

WHEELS Bontrager Rhythm Elite wheel system, 28mm, tubeless ready

CRANK Shimano Deore XT 44/32/22

REAR DERAILLEUR SRAM X-0

SIZES 15.5, 17.5, 18.5, 19.5, 21.5"

COLOR Blasted/Polished Aluminum



Fuel EX 7™

FRAME Alpha Red Aluminum w/ABP, Full Floater, alloy EVO Link, oversized bearings, 120mm travel

FRONT SUSPENSION RockShox Recon 351 Solo Air w/positive air pressure, Motion Control, rebound, compression, lockout, alloy steerer, 130mm

REAR SUSPENSION Fox Float RP2 XV Air Can, custom "trail tuned" w/Pro Pedal, rebound; 7.5x2.0"

WHEELS Shimano 525 Custom SL rear hub, Bontrager sealed front hub; Bontrager Duster, 28mm rims w/welded seams and eyelets

CRANK Shimano M532 44/32/22

REAR DERAILLEUR Shimano SLX "Shadow"

SIZES 15.5, 17.5, 18.5, 19.5, 21.5"

COLOR Pearl White/Blue



Fuel EX 6.5™

FRAME Alpha Red Aluminum w/Hi/Lo chainstays, oversized bearings, 120mm travel

FRONT SUSPENSION RockShox Recon 335 SL Air w/TurnKey lockout, rebound, alloy steerer, 130mm

REAR SUSPENSION Fox Float RP2 w/air pressure, Pro Pedal, rebound; 7.5x2.0"

WHEELS Shimano 525 Custom SL rear hub, Bontrager Sealed front hub; Bontrager Ranger rims w/welded seams and eyelets

CRANK Shimano M521 Hollowtech, Octalink 44/32/22

REAR DERAILLEUR Shimano Deore XT "Shadow"

SIZES 15.5, 17.5, 18.5, 19.5, 21.5"

COLOR Satin Black/Satin Silver



Fuel EX 5.5™

FRAME Alpha Red Aluminum w/Hi/Lo chainstays, oversized bearings, 120mm travel

FRONT SUSPENSION RockShox Tora 302 Coil w/rebound, TurnKey lockout, alloy steerer, 120mm

REAR SUSPENSION Fox Float RP2 w/air pressure, Pro Pedal, rebound; 7.5x2.0"

WHEELS Shimano M495 disc hubs; Bontrager Ranger rims w/welded seams and eyelets

CRANK Shimano M442 Octalink 44/32/22

REAR DERAILLEUR Shimano Deore

SIZES 15.5, 17.5, 18.5, 19.5, 21.5"

COLOR Matte Gold



Fuel EX 8™

FRAME Alpha Red Aluminum w/ABP, Full Floater, alloy EVO Link, oversized bearings, 120mm travel

FRONT SUSPENSION Fox Float 130 RL, custom "trail tuned" w/air adjust, rebound, lockout, alloy steerer, 130mm

REAR SUSPENSION Fox Float RP2 XV Air Can, custom "trail tuned" w/Pro Pedal, rebound; 7.5x2.0"

WHEELS Bontrager Rhythm wheel system, 28mm, tubeless ready

CRANK Shimano M542 custom 44/32/22

REAR DERAILLEUR Shimano Deore XT "Shadow"

SIZES 15.5, 17.5, 18.5, 19.5, 21.5"

COLOR Black/White



Fuel EX 8™

FRAME Alpha Red Aluminum w/ABP, Full Floater, alloy EVO Link, oversized bearings, 120mm travel

FRONT SUSPENSION Fox Float 130 RL, custom "trail tuned" w/air adjust, rebound, lockout, alloy steerer, 130mm

REAR SUSPENSION Fox Float RP2 XV Air Can, custom "trail tuned" w/Pro Pedal, rebound; 7.5x2.0"

WHEELS Bontrager Rhythm wheel system, 28mm, tubeless ready

CRANK Shimano M542 custom 44/32/22

REAR DERAILLEUR Shimano Deore XT "Shadow"

SIZES 15.5, 17.5, 18.5, 19.5, 21.5"

COLOR Root Beer/White

A large background image of a mountain biker descending a rocky trail. The rider is wearing a helmet, sunglasses, and a backpack. The word "REMEDY" is overlaid in large white letters at the bottom left. A collage of smaller images is positioned on the right side, showing various bike components and the rider in different settings. The collage includes: a close-up of a bike's rear shock with "FULL FLOATER" text; a close-up of a white bike frame with a red "Remedy" logo; a rider on a trail; a rider on a mountain; a close-up of a rider's face; a close-up of a bike's rear shock with "ACTIVE BRAKING PIVOT" text; and a close-up of a bike's rear shock with a shield logo. A red vertical bar on the far right contains the text "REMEDY" and the number "19".



05 ANDREW SHANDRO
Trek Long Travel R&D Specialist,
Free Ride Pioneer. Based on the
North Shore, British Columbia.

04 MEETING RIDER DEMANDS.
2009 Remedy upgrades include
adjustable travel, a lighter
headset and wide handlebars.

03 DIALED GEOMETRY.
Climb efficiently and descend
aggressively, with plenty of agility,
stability and clearance.

01 ABP—WHY SKID?
Active suspension under braking gives
more control and more effective braking.

02 SUSPENSION INTELLIGENCE.
The balance of stiffness, active suspension and
control you need for all-mountain.

REMEDY

Long Travel, Lighter.

Simply put, a Remedy can handle more. It takes a normal day of trail riding and makes every descent faster, every obstacle more achievable. Drops, jumps and nasty descents are the Remedy's specialty, all without a significant weight penalty or loss of pedaling efficiency.

01 ABP—WHY SKID? Active Braking Pivot (ABP™) technology supplies the most active suspension under braking.

02 SUSPENSION INTELLIGENCE. Full Floater™ enables a fully-tuned system that's great on the big hits, yet still fully pedal-able. The E2™ tapered steerer and EVO Link™ offer unprecedented stiffness. The combination is a frame that is prepared for any all-mountain experience.

03 DIALED GEOMETRY. We designed Remedy™ to climb efficiently and descend aggressively. The 67° head and 72° seat angle offer the perfect blend of carving and pushing. A 14" bottom bracket height guarantees you'll clear obstacles, and 17" chainstays are agile through slower technical terrain and stable at speed.

04 MEETING RIDER DEMANDS. Upgrades over last year's model include adjustable travel, a custom Cane Creek E2 headset for even lighter weight, and a wide bar on every Remedy.

05 ANDREW SHANDRO – Trek Long Travel R&D Specialist, Free Ride Pioneer.
Based on the North Shore, British Columbia: "I love the Remedy because I can climb and descend the most technical trails that Vancouver's North Shore throws at me. I can hit jumps and drops and know that the bike can handle it. If I were to have one bike, it would be the Remedy."

Remedy 9™

FRAME Alpha Red Aluminum w/ABP, Full Floater, E2 head tube, alloy EVO Link, oversized bearings, 150mm travel

FRONT SUSPENSION Fox 36 Talas w/E2 alloy steerer, high/low speed compression, rebound, 20mm QR axle, 120-160mm

REAR SUSPENSION Fox RP23 XV Air Can, custom "all-mountain tuned" w/3-position Pro Pedal, rebound; 8.0x2.25"

WHEELS Bontrager Rhythm Pro wheel system w/Scandium rims, 28mm, tubeless ready

CRANK Shimano XTR 44/32/22

REAR DERAILLEUR SRAM X-0

SIZES 15.5, 17.5, 19.5, 21.5"

COLOR Blasted/Polished Aluminum
Frame available.



Remedy 8™



Remedy 7™



TOP FUEL





04 CHRIS EATOUGH
Six-time 24-hour World Champion,
Trek Test Rider since 1998.

01 NEW CROSSBOW FRAME DESIGN.
The new frame design has the compliance,
stiffness and weight advantages that only
OCLV Carbon can offer.

02 THE PERFORMANCE ADVANTAGE.
ABP Race gives you active suspension
under braking with one-handed release.

03 TUNED FOR RACING.
The rear suspension's optimized for
race day, thanks to input from World
Cup- and Elite-level athletes.

TOP FUEL

In Pursuit of Speed.

The all-new Top Fuel cross country racing bike harnesses every bit of your energy and translates it into forward momentum. For everything from World Cup racing to regional race series, it's the weapon of choice for any serious cross-country athlete who needs ultimate weight savings and suspension performance.

01 NEW CROSSBOW FRAME DESIGN. The new Top Fuel 9.9 World Cup and 9.8 feature the most advanced OCLV[®] Carbon technology available. Offering the world's first no-cut off-road seatmast system, the Top Fuel brings unprecedented levels of compliance, stiffness and light weight. Net Molded bearing surfaces save weight while offering the most precise carbon technology around. BB90[™] gives you the option to run a 2x9 drivetrain for a more efficient pedal stroke.

02 THE PERFORMANCE ADVANTAGE. All Top Fuels feature ABP Race[™], giving you all the braking performance benefits of ABP[™] plus the one-handed release you need on race day. Full Floater[™] lets you further refine the suspension rate for 100mm of fully-tuned rear suspension performance.

03 TUNED FOR RACING. The 2000g frame weight (Crossbow frame w/shock) is a racer's dream, but there's more to this racing bike than light weight. Using feedback from World Cup- and Elite-level athletes, the Fox rear suspension features "race specific" compression and rebound damping for the ultimate in racing performance.

04 CHRIS EATOUGH – Six-time 24-hour World Champion, Trek Test Rider since 1998:
"What I really like about the Top Fuel is that the rear suspension is supple and responsive, giving me amazing control over rough terrain, but the bike is still very stiff and efficient under pedaling. The frame is noticeably stiff when I stand and sprint—it's light, fast and responsive. The bike certainly allows me to race even faster."

Top Fuel 9.9 SSL™

FRAME OCLV Red Carbon w/ABP Race, Full Floater, magnesium EVO Link, oversized bearings, 100mm travel

FRONT SUSPENSION RockShox SID World Cup w/remote Push Loc lever, carbon Power Bulge, dual air, Motion Control, rebound, alloy steerer, 100mm

REAR SUSPENSION DT SWISS Carbon w/remote lockout, air adjust; 6.5x1.5"

WHEELS Bontrager Race XXX Lite Disc wheel system, centerlock, carbon rims

CRANK FSA K-Force Light 2x9, Trek custom narrow Q factor 42/29

REAR DERAILLEUR Shimano XTR "Shadow," carbon

SIZES 15.5, 17.5, 18.5, 19.5, 21.5"

COLOR Onyx Carbon
Frame available.



Top Fuel 9.8™

FRAME OCLV Black Carbon w/ABP Race, Full Floater, magnesium EVO Link, oversized bearings, 100mm travel

FRONT SUSPENSION RockShox SID Race w/remote Pop Loc lever, dual air, Motion Control, rebound, alloy steerer, 100mm

REAR SUSPENSION Fox Float RP23, custom "race tuned" w/3-position Pro Pedal, rebound; 6.5x1.5"

WHEELS Bontrager Race X Lite Disc wheel system, centerlock, tubeless ready

CRANK Shimano Deore XT 44/32/22

REAR DERAILLEUR Shimano Deore XT "Shadow"

SIZES 15.5, 17.5, 18.5, 19.5, 21.5"

COLOR Onyx Carbon



Top Fuel 8™

FRAME Alpha Red Aluminum w/ABP Race, Full Floater, magnesium EVO Link, oversized bearings, 100mm travel

FRONT SUSPENSION RockShox Reba SL w/remote Pop Loc lever, dual air, Motion Control, rebound, alloy steerer, 100mm

REAR SUSPENSION Fox Float RP2, custom "race tuned" w/Pro Pedal, rebound; 6.5x1.5"

WHEELS Bontrager Race Lite Disc wheel system, centerlock, tubeless ready

CRANK Shimano SLX 44/32/22

REAR DERAILLEUR Shimano SLX SL "Shadow"

SIZES 15.5, 17.5, 18.5, 19.5, 21.5"

COLOR Chi Red/Pearl White





SESSION 88

SESSION 88

Embrace Gravity.

01 TAILORED TO THE VERTICAL RIDER. Near-vertical descents down rooted chutes and wet ladders can only mean one thing: a Session 88 rider's perfect storm. 203mm of Trek-tuned rear wheel travel suits any athlete—from the accomplished or aspiring downhill racer to the freerider whose shuttle runs beg for better performance.

02 BUILT TO WIN. Active Braking Pivot (ABP™) technology gives the greatest performance benefit at longer travel. Full Floater™ supplies a fully-tuned suspension that gives great mid-stroke control and a near bottomless feel. The result—greater control, higher speeds and the ability to brake later into a turn. A formula guaranteed to win.

03 CUSTOM-TUNED SHOCK. Each Session 88 features a custom-tuned Fox DHX rear shock, optimized to liven up the high frequency response while maintaining great chassis and end stroke control. Additionally, Trek presets each shock's Boost Valve pressure and volume so it won't influence the system prior to midstroke.

04 PODIUM POSITION. The Session 88's optimized geometry delivers the balance and position you need for downhill and freeriding. A slack 65° head tube (DH model) is mated to a low 14.29" bottom bracket that's kept in check by a 45.98" wheelbase. Stable and flickable. Podium fast.

05 ELI KRAHENBUHL – Trek Pro Rider, Mechanical Engineer. Based in Cheyenne, Wyoming: "The Session 88 DH is an ideal downhill race bike because of its geometry and suspension performance wrapped in a lightweight package—it just screams to be ridden fast. Braking performance over rough terrain is way above average thanks to ABP, and thanks to the EVO Link™ and frame construction, it does not flex laterally."

05 ELI KRAHENBUHL
Trek Pro Rider, Mechanical Engineer.
Based in Cheyenne, Wyoming.

01 TAILORED TO THE VERTICAL RIDER.
203mm of Trek-tuned rear wheel travel
fits any downhill or freerider.

04 PODIUM POSITION.
Optimized geometry provides
excellent stability and handling
at high speed.

03 CUSTOM-TUNED SHOCK.
Custom-tuned Fox DHX rear
shock balances lively response
and chassis control.

02 BUILT TO WIN.
ABP and Full Floater deliver smart,
balanced travel with better handling
and more effective braking.

*Mountain States Cup #4,
Crested Butte, Colorado*

Session 88 DH™

FRAME Alpha Red Aluminum w/ABP pivot, Full Floater, alloy EVO Link, E2 head tube, oversized bearings, 203mm travel

FRONT SUSPENSION Fox 40 RC2 w/Ti coil spring, high/low speed compression, rebound, internal travel adjust, 203mm

REAR SUSPENSION Fox DHX 5 Coil, custom “gravity tuned” w/external rebound, 15-click Pro Pedal, boost valve; 8.75x2.75”

WHEELS Bontrager Big Earl wheel system, 20mm front, 12mm rear w/150mm spacing

CRANK Shimano “New” Saint, 83mm bottom bracket, 38T

REAR DERAILLEUR SRAM X-0, short cage

SIZES 15.5, 17.5, 19.5”

COLOR Black/Polished Aluminum
Frame available.



Session 88 FR™

FRAME Alpha Red Aluminum w/ABP pivot, Full Floater, alloy EVO Link, E2 head tube, oversized bearings, 203mm travel

FRONT SUSPENSION RockShox Totem Coil w/E2 alloy steerer, rebound, high/low speed compression, Mission Control, 180mm

REAR SUSPENSION Fox DHX 5 Coil, custom “gravity tuned” w/external rebound, 15-click Pro Pedal, boost valve; 8.75x2.75”

WHEELS Bontrager Big Earl wheel system, 20mm front, 12mm rear w/150mm spacing

CRANK Shimano “New” Saint, 83mm bottom bracket, 36T

REAR DERAILLEUR Shimano “New” Saint “Shadow” SS

SIZES 15.5, 17.5, 19.5”

COLOR Matte Silver



04 TRAVIS BROWN
Olympian, Two-Time Single Speed World
Champion, 69er Visionary, Trek Product
Developer since 1994. Durango, Colorado.

01 WHY 69?
69er is a great fit, whatever kind of trail
you call home.

02 29" FRONT, 26" REAR.
A 29" front wheel for rollover and cornering ability,
and 26" rear wheel for maneuverability.

03 NEW FOX F29.
A Fox F29 100mm travel fork—no better
29" wheel handling out there.

69er Have It All.

01 WHY 69? There's no single trail that you could call ideal 69er® territory—riding 69 is a mindset. From rolling singletrack to technical terrain. Rhythm berm turns to start and stop steep. Trail, race, everyday. Whatever your poison, 69er is a pick that'll do you right.

02 29" FRONT, 26" REAR. 69er is the concept of a 29" front wheel and a 26" rear. In theory, this adds the rollover and angle of attack benefits of a 29" wheel to the acceleration and agile characteristics of a 26" wheel. In practice, it's a personality all its own.

03 NEW FOX F29. For 2009, both the singlespeed and geared versions feature a Fox F29 100mm travel fork with a custom 51mm fork offset for the best 29" wheel handling available. Specific to Trek is the Fox RP24 4-position platform adjustment, giving you real platform valve tuning.

04 TRAVIS BROWN - Olympian, Two-Time Single Speed World Champion, 69er Visionary, Trek Product Developer since 1994. Durango, Colorado:
"If you ever thought a singlespeed wasn't a race bike, you need to try this bike. Frame stiffness is through the roof, which leads to instant acceleration out of the corners. Up front, the custom Trek RP24 Fox fork lets your mind focus solely on the trail. 69er: carve and flick; why choose when you can have both?"

69er Single Speed™

FRAME Alpha Red Aluminum w/internally and externally relieved head tube, hydroformed bi-axial down tube and top tube, wishbone seatstay, hydroformed chainstays, asymmetric seat tube, forged horizontally adjustable disc dropouts

FRONT SUSPENSION Fox F29 RP24 Custom Trek Fork w/4-position platform, air pressure, rebound, compression, lockout, alloy 1 1/8" steerer, Bontrager 51mm offset, 100mm

WHEELS Bontrager Duster, 28mm, 29" front, 26" rear

CRANK Bontrager Race Lite Single Speed, 32T

REAR DERAILLEUR n/a

SIZES 15.5, 17.5, 19.5, 21.5"

COLOR Tan/Black

Frame available.



69er 3x9™

FRAME Alpha Red Aluminum w/internally and externally relieved head tube, hydroformed bi-axial down tube and top tube, wishbone seatstay, hydroformed chainstays, forged and relieved disc ready dropouts

FRONT SUSPENSION Fox F29 RL w/air pressure, rebound, lockout, alloy steerer, Bontrager 51mm offset, 100mm

WHEELS Bontrager Duster, 28mm, 29" front, 26" rear

CRANK Shimano M542 custom 44/32/22

REAR DERAILLEUR Shimano Deore XT "Shadow"

SIZES 15.5, 17.5, 19.5, 21.5"

COLOR Gloss Black/Gloss White



Top Fuel 69er™

FRAME Alpha Red Aluminum w/hydroformed top tube, bi-axial down tube, R1 Race Tuned Suspension, pivotless rear swingarm, Hi/Lo chainstays, oversized sealed bearings, 90mm rear wheel travel

FRONT SUSPENSION Fox F29 100RL w/air pressure, rebound, lockout, alloy steerer, 100mm, 51mm offset

REAR SUSPENSION Fox Float RP2 w/Pro Pedal, rebound, custom tuned

WHEELS Bontrager Race; 29" front, 26" rear

CRANK Shimano Deore LX 44/32/22

REAR DERAILLEUR SRAM X-0

SIZES 15.5, 17.5, 19.5, 21.5"

COLOR Gloss Black



ELITE



ELITE

Purely XC.

XC stands for cross country—some riders demand full suspension bikes for this rugged terrain, but the purists know that almost every trail can be ridden with a hardtail, and they do it proudly. Racing, sprinting, hammering...every weekend around the globe. Thank you, OCLV hardtail. You've always been there, and you always will.

01 NARROWER, NO-HASSLE BOTTOM BRACKET. Most race-level mountain bikes require thread-in bearings and bottom bracket cups. The BB90™ system molds the cups directly into the carbon frame for fewer parts and a narrower width, allowing the use of a 2x9 drivetrain. FSA's ceramic bearing 2x9 crankset is an exclusive feature on the 9.9 SSL.

02 REVOLUTIONARY NO-CUT OFF-ROAD SEATMAST. The world's first no-cut off-road seatmast system, featured on the Elite 9.9 SSL, brings unprecedented levels of compliance, stiffness and light weight. By offering two size mast caps (185mm and 245mm), the system still fits heights from 575mm to 825mm (BB center to rail).

03 LIGHTER THAN EVER. By adding new technologies like BB90 and drop-in bearings, the all-new OCLV® Carbon race frames are amazingly lightweight—only 1100g for the 9.9 SSL and 1200g for the 9.8 and 9.7.

04 DUSTY LABARR – Trek/VW Team Mechanic, Driver, Rider Psychologist:
“I've been the team wrench for countless races. During that time, I've seen the 9 Series Carbon hardtail hold its own on some of the world's toughest courses. The innovations for 2009 are exactly what top athletes are looking for—light weight, total stiffness and outstanding acceleration.”

02 REVOLUTIONARY NO-CUT OFF-ROAD SEATMAST.
The first-ever off-road seatmast system offers amazing compliance and stiffness with less weight.

01 NARROWER, NO-HASSLE BOTTOM BRACKET.
The BB90 bottom bracket system has a narrower width that accommodates a 2x9 drivetrain.

03 LIGHTER THAN EVER.
The refined OCLV Carbon race frame and BB90 system combine to give Trek its lightest off-road frames ever.

04 DUSTY LABARR
Trek/VW Team Mechanic,
Driver, Rider Psychologist.

NMBS East Coast National,
Windham, New York

Elite 9.9 SSL™

FRAME OCLV Red Carbon w/Net Molded head tube and BB90 bottom bracket, "No-Cut" mountain seatmast

FRONT SUSPENSION RockShox SID World Cup w/remote Push Loc lever, Carbon Power Bulge, dual air, Motion Control, rebound, alloy steerer, 100mm

WHEELS Bontrager Race XXX Lite Disc, centerlock w/carbon rims

CRANK FSA K-Force Light 2x9, custom narrow Q factor 42/29

REAR DERAILLEUR Shimano XTR

SIZES 15.5, 17.5, 18.5, 19.5, 21.5"

COLOR Onyx Carbon
Frame available.



Elite 9.8™

FRAME TCT Black Carbon w/BB90 bottom bracket, "Drop In" headset bearings

FRONT SUSPENSION RockShox SID Race w/remote Pop Loc lever, dual air, Motion Control, rebound, alloy steerer, 100mm

WHEELS Bontrager Race X Lite Disc wheel system, centerlock, black

CRANK Shimano Deore XT 44/32/22

REAR DERAILLEUR Shimano Deore XT "Shadow"

SIZES 15.5, 17.5, 18.5, 19.5, 21.5"

COLOR Platinum/Onyx Carbon



Elite 9.7™

FRAME TCT White Carbon w/BB90 bottom bracket, "Drop In" headset bearings

FRONT SUSPENSION RockShox Reba SL w/remote Pop Loc lever, dual air, Motion Control, rebound, alloy steerer, 100mm

WHEELS Bontrager Race Lite Disc wheel system, centerlock, tubeless ready

CRANK Shimano SLX 44/32/22

REAR DERAILLEUR Shimano SLX

SIZES 15.5, 17.5, 18.5, 19.5, 21.5"

COLOR Pearl White/Onyx Carbon



8500™

FRAME Alpha Red Aluminum w/internally and externally relieved head tube, hydroformed bi-axial down tube and top tube, wishbone seatstay, hydroformed chainstays, forged and relieved disc ready dropouts

FRONT SUSPENSION Fox F100 RL, custom tuned for Trek w/lockout, air adjust, rebound, alloy steerer, 100mm

WHEELS Bontrager Race Lite Disc wheel system, centerlock, tubeless ready

CRANK Shimano Deore XT 44/32/22

REAR DERAILLEUR Shimano Deore XT “Shadow”

SIZES 15.5, 17.5, 18.5, 19.5, 21.5”

COLOR Brushed Pewter/Pearl White
Frame available.



8000™

FRAME Alpha Red Aluminum w/internally and externally relieved head tube, hydroformed bi-axial down tube and top tube, wishbone seatstay, hydroformed chainstays, forged and relieved disc ready dropouts

FRONT SUSPENSION RockShox Reba SL w/positive and negative air pressure, Motion Control, rebound, compression, lockout, alloy steerer, 100mm

WHEELS Shimano M525 SL rear hub, Bontrager sealed front hub; Bontrager SSR, 32-hole welded rims w/eyelets

CRANK Shimano Deore XT 44/32/22

REAR DERAILLEUR Shimano Deore XT “Shadow”

SIZES 15.5, 17.5, 18.5, 19.5, 21.5”

COLOR Gloss Black/Pearl White



6700™

FRAME Alpha Black Aluminum w/externally relieved head tube, hydroformed bi-axial down tube and top tube, monostay seatstays, forged disc ready dropouts

FRONT SUSPENSION RockShox Recon SL Coil w/TurnKey lockout, alloy steerer, 100mm

WHEELS Shimano M525 disc hubs; Bontrager Ranger, 32-hole rims w/eyelets

CRANK Shimano M521 Octalink 44/32/22

REAR DERAILLEUR SRAM X-9

SIZES 15.5, 17.5, 18.5, 19.5, 21.5”

COLOR Pearl White/Chi Red



6500™

FRAME Alpha Black Aluminum w/externally relieved head tube, hydroformed bi-axial down tube and top tube, monostay seatstays, forged disc ready dropouts

FRONT SUSPENSION RockShox Tora SL Coil w/rebound, TurnKey lockout, alloy steerer, 100mm

WHEELS Shimano M535 centerlock disc hubs; Bontrager Ranger, 32-hole rims w/eyelets

CRANK Shimano M442 Octalink 44/32/22

REAR DERAILLEUR Shimano SLX

SIZES 15.5, 17.5, 18.5, 19.5, 21.5”

COLOR Carrera Blue/Pearl White



6000™

FRAME Alpha Black Aluminum w/externally relieved head tube, hydroformed bi-axial down tube and top tube, monostay seatstays, forged disc ready dropouts

FRONT SUSPENSION RockShox Dart 3 w/preload, lockout, alloy steerer, 100mm

WHEELS Shimano M475 disc hubs; Bontrager Ranger, 32-hole rims w/eyelets

CRANK Shimano M442 Octalink 44/32/22

REAR DERAILLEUR SRAM X-5

SIZES 15.5, 17.5, 18.5, 19.5, 21.5”

COLOR Black/Onyx



6000™

FRAME Alpha Black Aluminum w/externally relieved head tube, hydroformed bi-axial down tube and top tube, monostay seatstays, forged disc ready dropouts

FRONT SUSPENSION RockShox Dart 3 w/preload, lockout, alloy steerer, 100mm

WHEELS Shimano M475 disc hubs; Bontrager Ranger, 32-hole rims w/eyelets

CRANK Shimano M442 Octalink 44/32/22

REAR DERAILLEUR SRAM X-5

SIZES 15.5, 17.5, 18.5, 19.5, 21.5”

COLOR Red/White



HARDTAIL

The Perfect Fit.

01 PROVEN GEOMETRY. Hardtails at the 4000 Series level and below inspire confidence and offer more stability than the race-level hardtails. Highlights like a longer wheelbase, a lower bottom bracket and a slacker head angle give riders a more forgiving experience.

02 THE PERFECT FIT. Nearly every hardtail is offered in seven different frame sizes to guarantee the best fit possible. Ranging from as small as a 13" frame to as large as a 24", aluminum hardtails can fit the smallest and tallest riders.

03 COMFORT AND VALUE. Every Trek hardtail model's parts are hand picked to achieve a careful balance of value and durability. Above the 820, every model features a suspension fork for better comfort, and disc brakes are offered as an option at the 4300 and above for better braking.

04 NICK OQUENDO - Trek Store Chicago Bike Expert and Avid Rider:

"We always make sure we're matching our customers to the right ride when helping them buy a bike—it's the Trek Dealer philosophy. If it's your first singletrack adventure, or you need the most durable transportation—Trek's aluminum hardtails have a proven geometry that puts the rider in an upright riding position with a rugged frame construction that is capable of handling anything you are up for."

02 THE PERFECT FIT.
Sizes fitting the smallest to the tallest riders.

01 PROVEN GEOMETRY.
The right geometry to get you down the trail with comfort and confidence.

03 COMFORT AND VALUE.
Suspension forks come standard on every model above the 820.

04 NICK OQUENDO
Trek Store Chicago Bike Expert and Avid Rider. Michigan Avenue.

*Trek Store, Michigan Avenue,
Chicago, Illinois*

4500™

FRAME Alpha Black Aluminum w/externally relieved head tube, hydroformed bi-axial down tube, monostay seatstays, forged disc ready dropouts
FRONT SUSPENSION RockShox Dart 3 w/preload, lockout, alloy steerer, 100mm
WHEELS Alloy front hub, Shimano RM30 rear hub; Bontrager Camino, 32-hole rims w/eyelets, machined sidewalls
CRANK Shimano M341 42/32/22
REAR DERAILLEUR Shimano Deore
SIZES 13, 16, 18, 19.5, 21, 22.5, 24"
COLOR Metallic Black/Silver



4500™

FRAME Alpha Black Aluminum w/externally relieved head tube, hydroformed bi-axial down tube, monostay seatstays, forged disc ready dropouts
FRONT SUSPENSION RockShox Dart 3 w/preload, lockout, alloy steerer, 100mm
WHEELS Alloy front hub, Shimano RM30 rear hub; Bontrager Camino, 32-hole rims w/eyelets, machined sidewalls
CRANK Shimano M341 42/32/22
REAR DERAILLEUR Shimano Deore
SIZES 13, 16, 18, 19.5, 21, 22.5, 24"
COLOR Matte White



4300 Disc™

FRAME Alpha Black Aluminum w/externally relieved head tube, hydroformed bi-axial down tube, monostay seatstays, forged disc ready dropouts
FRONT SUSPENSION RST Gila T8 w/preload, 100mm
WHEELS Shimano M65 disc hubs; Bontrager Ranger rims w/eyelets
CRANK SR Suntour XCC-T102 42/34/24
REAR DERAILLEUR Shimano Alivio
SIZES 13, 16, 18, 19.5, 21, 22.5, 24"
COLOR Matte Orange



4300™

FRAME Alpha Black Aluminum w/externally relieved head tube, hydroformed bi-axial down tube, monostay seatstays, forged disc ready dropouts
FRONT SUSPENSION RST Gila T8 w/preload, 100mm
WHEELS Alloy front hub, Shimano RM30 rear hub; Bontrager Camino, 32-hole rims w/eyelets, machined sidewalls
CRANK SR Suntour XCC-T102 42/34/24
REAR DERAILLEUR Shimano Alivio
SIZES 13, 16, 18, 19.5, 21, 22.5, 24"
COLOR Matte Black



4300 Disc™

FRAME Alpha Black Aluminum w/externally relieved head tube, hydroformed bi-axial down tube, monostay seatstays, forged disc ready dropouts
FRONT SUSPENSION RST Gila T8 w/preload, 100mm
WHEELS Shimano M65 disc hubs; Bontrager Ranger rims w/eyelets

CRANK SR Suntour XCC-T102 42/34/24
REAR DERAILLEUR Shimano Alivio
SIZES 13, 16, 18, 19.5, 21, 22.5, 24"
COLOR Matte Black



4300 Disc™

FRAME Alpha Black Aluminum w/externally relieved head tube, hydroformed bi-axial down tube, monostay seatstays, forged disc ready dropouts
FRONT SUSPENSION RST Gila T8 w/preload, 100mm
WHEELS Shimano M65 disc hubs; Bontrager Ranger rims w/eyelets

CRANK SR Suntour XCC-T102 42/34/24
REAR DERAILLEUR Shimano Alivio
SIZES 13, 16, 18, 19.5, 21, 22.5, 24"
COLOR Silver/Black Chrome



4300™

FRAME Alpha Black Aluminum w/externally relieved head tube, hydroformed bi-axial down tube, monostay seatstays, forged disc ready dropouts
FRONT SUSPENSION RST Gila T8 w/preload, 100mm

WHEELS Alloy front hub, Shimano RM30 rear hub; Bontrager Camino, 32-hole rims w/eyelets, machined sidewalls
CRANK SR Suntour XCC-T102 42/34/24
REAR DERAILLEUR Shimano Alivio
SIZES 13, 16, 18, 19.5, 21, 22.5, 24"
COLOR Silver/Black Chrome



4300™

FRAME Alpha Black Aluminum w/externally relieved head tube, hydroformed bi-axial down tube, monostay seatstays, forged disc ready dropouts
FRONT SUSPENSION RST Gila T8 w/preload, 100mm

WHEELS Alloy front hub, Shimano RM30 rear hub; Bontrager Camino, 32-hole rims w/eyelets, machined sidewalls
CRANK SR Suntour XCC-T102 42/34/24
REAR DERAILLEUR Shimano Alivio
SIZES 13, 16, 18, 19.5, 21, 22.5, 24"
COLOR Matte Orange

3900 Disc™

FRAME Alpha White Aluminum w/externally relieved head tube, bi-axial down tube, disc compatible dropouts

FRONT SUSPENSION SR Suntour XCT V2 w/preload, 80mm

WHEELS Alloy front hub, Shimano M475 rear hub; Matrix 550 rims w/brushed sidewalls

CRANK SR Suntour XCC-T102 42/34/24

REAR DERAILLEUR Shimano Acera

SIZES 13, 16, 18, 19.5, 21, 22.5"

COLOR Matte Khaki



3900™

FRAME Alpha White Aluminum w/externally relieved head tube, bi-axial down tube, disc compatible dropouts

FRONT SUSPENSION SR Suntour XCT V2 w/preload, 80mm

WHEELS Alloy front hub, Shimano RM30 rear hub; Matrix 550 rims w/brushed sidewalls

CRANK SR Suntour XCC-T102 42/34/24

REAR DERAILLEUR Shimano Acera

SIZES 13, 16, 18, 19.5, 21, 22.5"

COLOR Matte Khaki



3700™

FRAME Alpha White Aluminum w/externally relieved head tube, bi-axial down tube, disc compatible dropouts

FRONT SUSPENSION SR Suntour M-2025, 63mm

WHEELS Alloy hubs; Matrix 550 rims w/brushed sidewalls

CRANK SR Suntour XCC-T208 48/38/28

REAR DERAILLEUR Shimano Acera

SIZES 13, 16, 18, 19.5, 21, 22.5"

COLOR Trek Red/Pearl White



3700™

FRAME Alpha White Aluminum w/externally relieved head tube, bi-axial down tube, disc compatible dropouts

FRONT SUSPENSION SR Suntour M-2025, 63mm

WHEELS Alloy hubs; Matrix 550 rims w/brushed sidewalls

CRANK SR Suntour XCC-T208 48/38/28

REAR DERAILLEUR Shimano Acera

SIZES 13, 16, 18, 19.5, 21, 22.5"

COLOR Acid Gold



3900™

FRAME Alpha White Aluminum w/externally relieved head tube, bi-axial down tube, disc compatible dropouts

FRONT SUSPENSION SR Suntour XCT V2 w/preload, 80mm

WHEELS Alloy front hub, Shimano RM30 rear hub; Matrix 550 rims w/brushed sidewalls

CRANK SR Suntour XCC-T102 42/34/24

REAR DERAILLEUR Shimano Acera

SIZES 13, 16, 18, 19.5, 21, 22.5"

COLOR Metallic Blue/Brushed Silver



3700™

FRAME Alpha White Aluminum w/externally relieved head tube, bi-axial down tube, disc compatible dropouts

FRONT SUSPENSION SR Suntour M-2025, 63mm

WHEELS Alloy hubs; Matrix 550 rims w/brushed sidewalls

CRANK SR Suntour XCC-T208 48/38/28

REAR DERAILLEUR Shimano Acera

SIZES 13, 16, 18, 19.5, 21, 22.5"

COLOR Raw Brushed



820™

FRAME Trek Custom Steel w/Cro-Moly seat tube

FRONT SUSPENSION SR Suntour M-2025, 63mm

WHEELS Alloy hubs; Matrix 550 rims w/brushed sidewalls

CRANK SR Suntour XCC-T208 48/38/28

REAR DERAILLEUR Shimano Acera

SIZES 13, 16, 18, 19.5, 21, 22.5"

COLOR Matte Blue



820™

FRAME Trek Custom Steel w/Cro-Moly seat tube

FRONT SUSPENSION SR Suntour M-2025, 63mm

WHEELS Alloy hubs; Matrix 550 rims w/brushed sidewalls

CRANK SR Suntour XCC-T208 48/38/28

REAR DERAILLEUR Shimano Acera

SIZES 13, 16, 18, 19.5, 21, 22.5"

COLOR Gloss Black/Gloss White



WSD

WSD

All Thrills. No Frills.

Trek was the first major bicycle company to introduce a complete line of products specifically designed to meet the unique fit needs of women. What started in the year 2000 has evolved to include the line of mountain bikes you see today.

01 A DIFFERENCE THAT DELIVERS. WSD™ addresses the key anatomical differences between men and women, giving female mountain bikers more control, increased comfort and better handling. From key contact points like grips, saddles and bars, to a more upright geometry, WSD is designed for optimal comfort.

02 A PRO-WORTHY RIDE. For 2009, Trek introduces WSD Pro geometry. At the 6000 Series and above, WSD Pro recognizes that riders at a more serious level need more aggressive geometry. WSD Pro bikes provide a longer effective reach than a WSD bike, but not as long as a non-WSD ride.

03 SERIOUS RACE PERFORMANCE. The Top Fuel 9.8 WSD features all the frame technologies—a no-cut, off-road seatmast and drop-in bearings with a BB90™ system—new to the 2009 Top Fuel. With an increase to 100mm of rear wheel travel and technologies like ABP™, Full Floater™ and EVO Link™, this bike's performance does not discriminate.

04 EMILY BATTY – U23 Canadian National Champion: “Trek has always been on the cutting edge of cycling technology. Now their new WSD Pro geometry accommodates an excellent bike fit that helps maximize my performance no matter where I am racing in the world.”

01 A DIFFERENCE THAT DELIVERS.
WSD offers far more control, increased comfort and better handling.

02 A PRO-WORTHY RIDE.
WSD Pro geometry takes a more aggressive approach without losing sight of the essentials.

03 SERIOUS RACE PERFORMANCE.
The Top Fuel 9.8 WSD features the same advanced, pro-worthy technology as the non-WSD model.

04 EMILY BATTY
U23 Canadian
National Champion.



NMBS East Coast National,
Windham, New York

Top Fuel 9.8 WSD™

FRAME OCLV Black Carbon w/ABP Race, Full Floater, magnesium EVO Link, oversized bearings, 100mm rear wheel travel

FRONT SUSPENSION RockShox SID Race w/remote Pop Loc lever, dual air, Motion Control, rebound, alloy steerer, 100mm

REAR SUSPENSION Fox Float RP23, custom "race tuned" w/3-position Pro Pedal, rebound; 6.5x1.5"

WHEELS Bontrager Race X Lite Disc wheel system, centerlock, tubeless ready

CRANK Shimano Deore XT 44/32/22

REAR DERAILLEUR Shimano Deore XT "Shadow"

SIZES Women's 14.5, 15.5, 16.5, 17.5"

COLOR Titanite Black



Fuel EX 8 WSD™

FRAME Alpha Red Aluminum w/ABP, Full Floater, alloy EVO Link, oversized bearings, 120mm travel

FRONT SUSPENSION Fox Float 130 RL, custom “trail tuned” w/air adjust, rebound, lockout, alloy steerer, 130mm

REAR SUSPENSION Fox Float RP2 XV Air Can, custom “trail tuned” w/Pro Pedal, rebound; 7.5x2.0”

WHEELS Bontrager Rhythm wheel system, 28mm, tubeless ready

CRANK Shimano M542 custom 44/32/22

REAR DERAILLEUR Shimano Deore XT “Shadow”

SIZES Women’s 14.5, 15.5, 16.5, 17.5”

COLOR Gold/Chocolate



Fuel EX 5.5 WSD™

FRAME Alpha Red Aluminum w/Hi/Lo chainstays, oversized bearings, 120mm travel

FRONT SUSPENSION RockShox Tora 302 Coil w/rebound, TurnKey lockout, alloy steerer, 120mm

REAR SUSPENSION Fox Float RP2 w/air pressure, Pro Pedal, rebound; 7.5x2.0”

WHEELS Shimano M495 disc hubs; Bontrager Ranger rims w/welded seams and eyelets

CRANK Shimano M442 Octalink 44/32/22

REAR DERAILLEUR Shimano Deore

SIZES Women’s 14.5, 15.5, 16.5, 17.5”

COLOR Pearl White/Plum



Top Fuel 8 WSD™

FRAME Alpha Red Aluminum w/ABP Race, Full Floater, magnesium EVO Link, oversized bearings, 100mm travel

FRONT SUSPENSION RockShox Reba SL w/remote Pop Loc lever, dual air, Motion Control, rebound, alloy steerer, 100mm

REAR SUSPENSION Fox Float RP2, custom “race tuned” w/Pro Pedal, rebound; 6.5x1.5”

WHEELS Bontrager Race Lite Disc wheel system, centerlock, tubeless ready

CRANK Shimano SLX 44/32/22

REAR DERAILLEUR Shimano SLX SL “Shadow”

SIZES Women’s 14.5, 15.5, 16.5, 17.5”

COLOR Metallic Black/Pearl White



8000 WSD™

FRAME Alpha Red Aluminum w/internally and externally relieved head tube, hydroformed bi-axial down tube and top tube, wishbone seatstay, hydroformed chainstays, forged and relieved disc ready dropouts

FRONT SUSPENSION RockShox Reba SL w/positive and negative air pressure, Motion Control, rebound, compression, lockout, alloy steerer, 100mm

WHEELS Shimano M525 SL rear hub, Bontrager sealed front hub; Bontrager SSR, 32-hole welded rims w/eyelets

CRANK Shimano Deore XT 44/32/22

REAR DERAILLEUR Shimano Deore XT “Shadow”

SIZES Women’s 14.5, 15.5, 16.5, 17.5”

COLOR Chi Red



6700 WSD™

FRAME Alpha Black Aluminum w/externally relieved head tube, hydroformed bi-axial down tube and top tube, monostay seatstays, forged disc ready dropouts

FRONT SUSPENSION RockShox Recon SL Coil w/preload, rebound, TurnKey lockout (14.5” size: light spring), alloy steerer, 100mm

WHEELS Shimano M525 disc hubs; Bontrager Ranger, 32-hole rims w/eyelets

CRANK Shimano M521 Octalink 44/32/22

REAR DERAILLEUR SRAM X-9

SIZES Women’s 14.5, 15.5, 16.5, 17.5”

COLOR Pearl White



6000 WSD™

FRAME Alpha Black Aluminum w/externally relieved head tube, hydroformed bi-axial down tube and top tube, monostay seatstays, forged disc ready dropouts

FRONT SUSPENSION RockShox Dart 3 w/preload, lockout (14.5” size: custom spring weight), alloy steerer, 100mm

WHEELS Shimano M475 disc hubs; Bontrager Ranger, 32-hole rims w/eyelets

CRANK Shimano M442 Octalink 44/32/22

REAR DERAILLEUR SRAM X-5

SIZES Women’s 14.5, 15.5, 16.5, 17.5”

COLOR Electric Blue



4500 WSD™

FRAME Alpha Black Aluminum w/externally relieved head tube, hydroformed bi-axial down tube, monostay seatstays, forged disc ready dropouts

FRONT SUSPENSION RockShox Dart 3 w/preload, lockout (14" size: light spring), alloy steerer, 100mm

WHEELS Alloy front hub, Shimano RM30 rear hub; Bontrager Camino, 32-hole rims w/eyelets, machined sidewalls

CRANK Shimano M341 42/32/22

REAR DERAILLEUR Shimano Deore

SIZES Women's 14, 16, 18"

COLOR Pearl White/Velvet Brown

A side profile of a Trek 4500 WSD bicycle. The frame is primarily white with dark red accents on the down tube and seat tube. It features a black front suspension fork, a black seatpost, and a black saddle. The wheels are black with many spokes. The tires are black with a tread pattern. The bike is shown against a white background.

4300 WSD™

FRAME Alpha Black Aluminum w/externally relieved head tube, hydroformed bi-axial down tube, monostay seatstays, forged disc ready dropouts

FRONT SUSPENSION RST Gila T8 w/preload, 100mm

WHEELS Alloy front hub, Shimano RM30 rear hub; Bontrager Camino, 32-hole rims w/eyelets, machined sidewalls

CRANK SR Suntour XCC-T102 42/34/24

REAR DERAILLEUR Shimano Alivio

SIZES Women's 14, 16, 18"

COLOR Pearl White/Pomegranate

A side profile of a Trek 4300 WSD bicycle. The frame is primarily white with dark red accents on the down tube and seat tube. It features a black front suspension fork, a black seatpost, and a black saddle. The wheels are black with many spokes. The tires are black with a tread pattern. The bike is shown against a white background.

3900 WSD™

FRAME Alpha White Aluminum w/externally relieved head tube, bi-axial down tube, disc compatible dropouts

FRONT SUSPENSION SR Suntour XCT V2 w/preload (13" size: custom spring weight), 80mm

WHEELS Alloy front hub, Shimano RM30 rear hub; Matrix 550 rims w/brushed sidewalls

CRANK SR Suntour XCC-T102 42/34/24

REAR DERAILLEUR Shimano Acera

SIZES Women's 13, 16, 19.5"

COLOR Soft Blue/Velvet Blue

A side profile of a Trek 3900 WSD bicycle. The frame is primarily white with light blue accents on the down tube and seat tube. It features a black front suspension fork, a black seatpost, and a black saddle. The wheels are black with many spokes. The tires are black with a tread pattern. The bike is shown against a white background.

3700 WSD™

FRAME Alpha White Aluminum w/externally relieved head tube, bi-axial down tube, disc compatible dropouts

FRONT SUSPENSION SR Suntour M-2025, custom spring weight, 63mm

WHEELS Alloy hubs; Matrix 550 rims w/brushed sidewalls

CRANK SR Suntour XCC-T208 48/38/28

REAR DERAILLEUR Shimano Acera

SIZES Women's 13, 16, 19.5"

COLOR Silver/White

A side profile of a Trek 3700 WSD bicycle. The frame is primarily white with silver accents on the down tube and seat tube. It features a black front suspension fork, a black seatpost, and a black saddle. The wheels are black with many spokes. The tires are black with a tread pattern. The bike is shown against a white background.

820 WSD™

FRAME Trek Custom Steel w/Cro-Moly seat tube

FRONT SUSPENSION SR Suntour M-2025, custom spring weight, 63mm

WHEELS Alloy hubs; Matrix 550 rims w/brushed sidewalls

CRANK SR Suntour XCC-T208 48/38/28

REAR DERAILLEUR Shimano Acera

SIZES Women's 13, 16"

COLOR Lavender/Metallic Purple

A side profile of a Trek 820 WSD bicycle. The frame is primarily purple with silver accents on the down tube and seat tube. It features a black front suspension fork, a black seatpost, and a black saddle. The wheels are black with many spokes. The tires are black with a tread pattern. The bike is shown against a white background.

BONTRAGER

Upgrade Your Ride.

- 01 MUD X 1.8 TIRE** Big knobs dig in for traction even in the wettest conditions.
- 02 SUPER X 2.0 TIRE** Blazin' fast low-profile tread designed for drier conditions.
- 03 XDX 2.2 TIRE** Resilient all-conditions tread rolls fast on the hard pack and grabs hard in softer conditions.
- 04 BIG EARL 2.7 TIRE** Wide enough to smooth out the roughest downhills and stick the biggest landings.

- 05 AIR REGULATOR** Ultra-light CO₂ inflator with precise regulation for just the right PSI.
- 06 RHYTHM ELITE WHEEL SET** 28mm wide rims and Swiss hubs make this wheel set tough enough to handle the roughest trails and most unforgiving riders.
- 07 SUPER CHARGER** Durable all-aluminum construction and supple rubber handle for easy, comfortable inflation.
- 08 VALVES** Removable cores for no-mess sealant installation.
- 09 SUPER JUICE** Lightest, most effective sealant on the market, for use with all Bontrager tubeless ready tires.
- 10 RIM STRIPS** Ditch the tubes and go tubeless. Run lower PSI, get better traction and never get pinch flats again.



- 01 BONTRAGER RXL SHOE** High-end performance MTB shoe with all-carbon sole and plenty of grip.
- 02 BONTRAGER RL SHOE** Super-stiff for maximum power to pedal transfer.
- 03 BONTRAGER RL SHOE WSD** Designed specifically for women who ride the toughest trails.
- 04 BONTRAGER RACE SHOE** Great all-around walkable shoe with great style.
- 05 BONTRAGER RACE SHOE WSD** Comfortable, walkable, smartly-styled shoe designed for women.
- 06 RL WSD LOCK-ON GRIPS** No-slip security and eye-catching flair, designed specifically for women.
- 07 RHYTHM LONG FINGER GLOVE** Comfort, protection and durability to keep your paws unscathed and happy.
- 08 RL LOCK-ON GRIPS** No-slip security and eye-catching flair.
- 09 XXX LITE BAR** Super-light OCLV® Carbon soaks up vibration and hangs tough even with abuse.
- 10 XXX LITE STEM** Let's be honest, you don't really need it, but it's ridiculously light and would really pimp your ride.
- 11 RHYTHM PRO SADDLE** All-mountain saddle that's great for technical descents and long climbs.
- 12 RL CAGE** All-carbon cage hugs your bottle tight without adding weight.
- 13 RXL SWITCHBLADE FORK** ACC Carbon legs for a super-light, forgiving ride. You'll wonder why you didn't go rigid before.
- 14 RHYTHM POST** Ultra-tough all-aluminum construction for durability and big descents.
- 15 XXX LITE MAST (LONG)** Available in three different offsets to dial in the perfect fit for any rider. 245mm long.
- 16 XXX LITE MAST (SHORT)** Available in three different offsets to dial in the perfect fit for any rider. 185mm long.
- 17 ALL-IN-ONE TOOL** Always be prepared. Don't hit the trails without one of these.



FUEL EX						
Model		FUEL EX 9.9	FUEL EX 9.8	FUEL EX 9	FUEL EX 8	FUEL EX 8 WSD
FRAMESET	Sizes	15.5, 17.5, 18.5, 19.5, 21.5"	15.5, 17.5, 18.5, 19.5, 21.5"	15.5, 17.5, 18.5, 19.5, 21.5"	15.5, 17.5, 18.5, 19.5, 21.5"	Women's 14.5, 15.5, 16.5, 17.5"
	Colors	Onyx Carbon	Pearl White Carbon	Blasted/Polished Aluminum	Black/White or Root Beer/White	Gold/Chocolate
	Frame	OCLV Black Carbon w/ABP, Full Floater, E2 head tube, OCLV Carbon EVO Link, oversized bearings, 120mm travel	OCLV Black Carbon w/ABP, Full Floater, E2 head tube, magnesium EVO Link, oversized bearings, 120mm travel	Alpha Red Aluminum w/ABP, Full Floater, alloy EVO Link, oversized bearings, 120mm travel	Alpha Red Aluminum w/ABP, Full Floater, alloy EVO Link, oversized bearings, 120mm travel	Alpha Red Aluminum w/ABP, Full Floater, alloy EVO Link, oversized bearings, 120mm travel
	Front Suspension	Fox RP24, custom for Trek, "trail tuned" w/4-position platform to lockout, air adjust, rebound, E2 alloy steerer, 120mm	Fox F120 RL, custom for Trek, "trail tuned" w/air adjust, rebound, lockout, E2 alloy steerer, 120mm	Fox RP24, custom for Trek, "trail tuned" w/4-position platform to lockout, air adjust, rebound, alloy steerer, 130mm	Fox Float 130 RL, custom "trail tuned" w/air adjust, rebound, lockout, alloy steerer, 130mm	Fox Float 130 RL, custom "trail tuned" w/air adjust, rebound, lockout, alloy steerer, 130mm
WHEELS	Rear Suspension	Fox Float RP23 XV Air Can, custom "trail tuned" w/Pro Pedal, rebound; 7.5x2.0"	Fox Float RP23 XV Air Can, custom "trail tuned" w/Pro Pedal, rebound; 7.5x2.0"	Fox Float RP23 XV Air Can, custom "trail tuned" w/Pro Pedal, rebound; 7.5x2.0"	Fox Float RP23 XV Air Can, custom "trail tuned" w/Pro Pedal, rebound; 7.5x2.0"	Fox Float RP23 XV Air Can, custom "trail tuned" w/Pro Pedal, rebound; 7.5x2.0"
	Wheels	Bontrager Rhythm Pro wheel system, 28mm w/Scandium rims, tubeless ready	Bontrager Rhythm Elite wheel system, 28mm, tubeless ready	Bontrager Rhythm Elite wheel system, 28mm, tubeless ready	Bontrager Rhythm wheel system, 28mm, tubeless ready	Bontrager Rhythm wheel system, 28mm, tubeless ready
DRIVETRAIN	Tires	Bontrager Jones XR w/Kevlar bead, 26x2.2/2.25"; 127 tpi	Bontrager Jones XR w/Kevlar bead, 26x2.2/2.25"; 127 tpi	Bontrager Jones XR w/Kevlar bead, 26x2.2/2.25"; 127 tpi	Bontrager Jones XR w/Kevlar bead, 26x2.2/2.25"; 127 tpi	Bontrager Jones XR w/Kevlar bead, 26x2.2/2.25"; 127 tpi
	Shifters	SRAM X-0, 9 speed w/MatchMaker	Shimano Deore XT	SRAM X-9, 9 speed w/MatchMaker	Shimano SLX SL	Shimano SLX SL
	Front Derailleur	Shimano XTR	Shimano Deore XT	Shimano Deore XT	Shimano SLX SL	Shimano SLX
	Rear Derailleur	SRAM X-0	Shimano Deore XT "Shadow"	SRAM X-0	Shimano Deore XT "Shadow"	Shimano Deore XT "Shadow"
COMPONENTS	Crank	Shimano XTR 44/32/22	Shimano Deore XT 44/32/22	Shimano Deore XT 44/32/22	Shimano M542 custom 44/32/22	Shimano M542 custom 44/32/22
	Cassette	Shimano XTR 11-32, 9 speed	SRAM PG970 11-32, 9 speed	SRAM PG970 11-32, 9 speed	SRAM PG970 11-32, 9 speed	SRAM PG970 11-32, 9 speed
	Pedals	n/a	n/a	CrankBrothers Custom Candy C	CrankBrothers Custom Candy C	CrankBrothers Custom Candy C
COMPONENTS	Saddle	Bontrager Race X Lite w/hollow titanium rails	Bontrager Race Lite w/hollow stainless steel rails	Bontrager Race Lite w/hollow stainless steel rails	Bontrager Race w/hollow Cro-Moly rails	Bontrager Race Lux FIT w/hollow Cro-Moly rails
	Seatpost	Bontrager Race XXX Lite, carbon, 5mm offset	Bontrager Race Lite, 5mm offset	Bontrager Race Lite, 5mm offset	Bontrager Race, 5mm offset	Bontrager Race, 5mm offset
	Handlebars	Bontrager Race XXX Lite, 40mm rise, 31.8mm	Bontrager Race X Lite Carbon, 40mm rise, 31.8mm	Bontrager Race Lite, 40mm rise, 31.8mm	Bontrager Race, 40mm rise, 31.8mm	Bontrager Race, 40mm rise, 31.8mm
	Stem	Bontrager Race X Lite, 7 degree, 31.8mm	Bontrager Race X Lite, 7 degree, 31.8mm	Bontrager Race X Lite, 7 degree, 31.8mm	Bontrager Race Lite, 7 degree, 31.8mm	Bontrager Race Lite, 7 degree, 31.8mm
	Headset	Frustum Cane Creek SE Light Edition; 1 1/8" top, 1.5" bottom	Frustum Cane Creek SE Light Edition; 1 1/8" top, 1.5" bottom	VP-A58ACT-TK AHS semi-cartridge	VP-A58ACT-TK AHS semi-cartridge	VP-A58ACT-TK AHS semi-cartridge
	Brakeset	Avid Juicy Ultimate, hydraulic disc; 185mm rotors (160mm rear rotor on 15.5, 17.5, 18.5")	Shimano Deore XT Ti hydraulic disc, custom Ti for Trek; 180mm rotors (160mm rear rotor on 15.5, 17.5, 18.5")	Avid Elixir R Custom SL, hydraulic disc; 185mm rotors (160mm rear rotor on 15.5, 17.5, 18.5")	Avid Juicy 5, hydraulic disc; 185mm rotors (160mm rear rotor on 15.5, 17.5, 18.5")	Avid Juicy 5, hydraulic disc; 160mm rotors

FUEL EX						
Model		FUEL EX 7	FUEL EX 6.5	FUEL EX 5.5	FUEL EX 5.5 WSD	REMEDY 9
FRAMESET	Sizes	15.5, 17.5, 18.5, 19.5, 21.5"	15.5, 17.5, 18.5, 19.5, 21.5"	15.5, 17.5, 18.5, 19.5, 21.5"	Women's 14.5, 15.5, 16.5, 17.5"	15.5, 17.5, 19.5, 21.5"
	Colors	Pearl White/Blue	Satin Black/Satin Silver	Matte Gold	Pearl White/Plum	Blasted/Polished Aluminum
	Frame	Alpha Red Aluminum w/ABP, Full Floater, alloy EVO Link, oversized bearings, 120mm travel	Alpha Red Aluminum w/Hi/Lo chainstays, oversized bearings, 120mm travel	Alpha Red Aluminum w/Hi/Lo chainstays, oversized bearings, 120mm travel	Alpha Red Aluminum w/Hi/Lo chainstays, oversized bearings, 120mm travel	Alpha Red Aluminum w/ABP, Full Floater, E2 head tube, alloy EVO Link, oversized bearings, 150mm travel
	Front Suspension	RockShox Recon 351 Solo Air w/positive air pressure, Motion Control, rebound, compression, lockout, alloy steerer, 130mm	RockShox Recon 335 SL Air w/TurnKey lockout, rebound, alloy steerer, 130mm	RockShox Tora 302 Coil w/rebound, TurnKey lockout, alloy steerer, 120mm	RockShox Tora 302 Coil w/rebound, TurnKey lockout, alloy steerer, 120mm	Fox 36 Talas w/E2 alloy steerer, high/low speed compression, rebound, 20mm QR axle, 120-160mm
WHEELS	Rear Suspension	Fox Float RP2 XV Air Can, custom "trail tuned" w/Pro Pedal, rebound; 7.5x2.0"	Fox Float RP2 w/air pressure, Pro Pedal, rebound; 7.5x2.0"	Fox Float RP2 w/air pressure, Pro Pedal, rebound; 7.5x2.0"	Fox Float RP2 w/air pressure, Pro Pedal, rebound; 7.5x2.0"	Fox RP23 XV Air Can, custom "all-mountain tuned" w/3-position Pro Pedal, rebound; 8.0x2.25"
	Wheels	Shimano 525 Custom SL rear hub, Bontrager sealed front hub; Bontrager Duster, 28mm rims w/welded seams and eyelets	Shimano 525 Custom SL rear hub, Bontrager Sealed front hub; Bontrager Ranger rims w/welded seams and eyelets	Shimano M495 disc hubs; Bontrager Ranger rims w/welded seams and eyelets	Shimano M495 disc hubs; Bontrager Ranger rims w/welded seams and eyelets	Bontrager Rhythm Pro wheel system w/Scandium rims, 28mm, tubeless ready
DRIVETRAIN	Tires	Bontrager Jones XR w/Kevlar bead, 26x2.2/2.25"; 60 tpi	Bontrager Jones XR w/Kevlar bead, 26x2.2/2.25"; 60 tpi	Bontrager Jones XR, 26x2.2/2.25"; 30 tpi	Bontrager Jones XR, 26x2.2/2.25"; 30 tpi	Kenda Nevegal w/SWS sidewall protection, 26x2.35"; 127 tpi
	Shifters	Shimano Deore	Shimano Deore, 9 speed	Shimano Deore, 9 speed	Shimano Deore, 9 speed	SRAM X-0, 9 speed w/MatchMaker
	Front Derailleur	Shimano Deore	Shimano Deore	Shimano Deore	Shimano Deore	Shimano XTR, high mount
	Rear Derailleur	Shimano SLX "Shadow"	Shimano Deore XT "Shadow"	Shimano Deore	Shimano Deore	SRAM X-0
COMPONENTS	Crank	Shimano M532 44/32/22	Shimano M521 Hollowtech, Octalink 44/32/22	Shimano M442 Octalink 44/32/22	Shimano M442 Octalink 44/32/22	Shimano XTR 44/32/22
	Cassette	SRAM PG950 11-32	SRAM PG950 11-34, 9 speed	SRAM PG950 11-34, 9 speed	SRAM PG950 11-34, 9 speed	SRAM PG970 11-32, 9 speed
	Pedals	Shimano M505, clipless	Shimano M505, clipless	Alloy platform w/clips and straps	Alloy platform w/clips and straps	n/a
COMPONENTS	Saddle	Bontrager Race w/hollow Cro-Moly rails	Bontrager Race Basic	Bontrager Race Basic	Bontrager FIT Basic	Bontrager Rhythm Pro w/hollow titanium rails
	Seatpost	Bontrager Race, 5mm offset	Bontrager Race, 5mm offset	Bontrager SSR, 20mm offset	Bontrager SSR, 20mm offset	Bontrager Race Lite, 5mm offset
	Handlebars	Bontrager Race, 40mm rise, 650mm width	Bontrager Race, 40mm rise, 650mm width	Bontrager Race, 40mm rise, 650mm width	Bontrager Race, 40mm rise, 650mm width	Bontrager Rhythm Pro, 50mm rise, 31.8mm, 710mm width
	Stem	Bontrager SSR, 10 degree, 31.8mm	Bontrager SSR, 10 degree, 31.8mm	Bontrager SSR, 10 degree, 31.8mm	Bontrager SSR, 10 degree, 31.8mm	Bontrager Race X Lite, 7 degree, 31.8mm
	Headset	VP-A58ACT-TK AHS semi-cartridge	VP-A76C AHS semi-cartridge	VP-A76C AHS semi-cartridge	VP-A76C AHS semi-cartridge	Frustum Cane Creek SE Light Edition; 1 1/8" top, 1.5" bottom
	Brakeset	Avid Juicy 3, hydraulic disc; 185mm rotors (160mm rear rotor on 15.5, 17.5, 18.5")	Avid Juicy 3, hydraulic disc; 185mm rotors (160mm rear rotor on 15.5, 17.5, 18.5")	Shimano M486 hydraulic disc; 185mm rotors (160mm rear rotor on 15.5, 17.5, 18.5")	Shimano M486, hydraulic disc; 160mm rotors	Avid Elixir CR w/carbon levers; 203mm front rotor, 180mm rear rotor

REMEDY						
Model		REMEDY 8	REMEDY 7	TOP FUEL 9.9 SSL	TOP FUEL 9.8	TOP FUEL 9.8 WSD
FRAMESET	Sizes	15.5, 17.5, 19.5, 21.5"	15.5, 17.5, 19.5, 21.5"	15.5, 17.5, 18.5, 19.5, 21.5"	15.5, 17.5, 18.5, 19.5, 21.5"	Women's 14.5, 15.5, 16.5, 17.5"
	Colors	Root Beer/Gloss White	Gloss White/Gloss Black	Onyx Carbon	Onyx Carbon	Titanite Black
	Frame	Alpha Red Aluminum w/ABP, Full Floater, E2 head tube, alloy EVO Link, oversized bearings, 150mm travel	Alpha Red Aluminum w/ABP, Full Floater, E2 head tube, alloy EVO Link, oversized bearings, 150mm travel	OCLV Red Carbon w/ABP Race, Full Floater, magnesium EVO Link, oversized bearings, 100mm travel	OCLV Black Carbon w/ABP Race, Full Floater, magnesium EVO Link, oversized bearings, 100mm travel	OCLV Black Carbon w/ABP Race, Full Floater, magnesium EVO Link, oversized bearings, 100mm travel
	Front Suspension	RockShox Lyrik 2-step w/E2 alloy steerer, 20mm Maxle, 115-160mm	RockShox Lyrik IS U-Turn w/E2 steerer, 20mm Maxle, 115-160mm	RockShox SID World Cup w/remote Push Loc lever, carbon Power Bulge, dual air, Motion Control, rebound, alloy steerer, 100mm	RockShox SID Race w/remote Pop Loc lever, dual air, Motion Control, rebound, alloy steerer, 100mm	RockShox SID Race w/remote Pop Loc lever, dual air, Motion Control, rebound, alloy steerer, 100mm
WHEELS	Rear Suspension	Fox RP23 XV Air Can, custom "all-mountain tuned" w/3-position Pro Pedal, rebound; 8.0x2.25"	Fox RP2 XV Air Can, custom "all-mountain tuned" w/Pro Pedal, rebound; 8.0x2.25"	DT SWISS Carbon w/remote lockout, air adjust; 6.5x1.5"	Fox Float RP23, custom "race tuned" w/3-position Pro Pedal, rebound; 6.5x1.5"	Fox Float RP23, custom "race tuned" w/3-position Pro Pedal, rebound; 6.5x1.5"
	Wheels	Bontrager Rhythm Comp wheel system, 28mm, tubeless ready	Bontrager Rhythm wheel system, 28mm, tubeless ready	Bontrager Race XXX Lite Disc wheel system, centerlock, carbon rims	Bontrager Race X Lite Disc wheel system, centerlock, tubeless ready	Bontrager Race X Lite Disc wheel system, centerlock, tubeless ready
DRIVETRAIN	Tires	Kenda Nevegal w/SWS sidewall protection, 26x2.35"; 127 tpi	Kenda Nevegal w/SWS sidewall protection, 26x2.35"; 127 tpi	Bontrager Jones XR Team Edition, 26x2.0"; 127 tpi	Bontrager Jones XR w/Kevlar bead, 26x2.25/2.2"; 127 tpi	Bontrager Jones XR w/Kevlar bead, 26x2.25/2.2"; 127 tpi
	Shifters	Shimano Deore XT	Shimano SLX SL	Shimano XTR	Shimano Deore XT	Shimano Deore XT
	Front Derailleur	Shimano Deore XT, high mount	Shimano SLX, high mount	Shimano XTR, high mount	Shimano Deore XT, high mount	Shimano Deore XT, high mount
	Rear Derailleur	Shimano Deore XT "Shadow"	Shimano SLX "Shadow"	Shimano XTR "Shadow," carbon	Shimano Deore XT "Shadow"	Shimano Deore XT "Shadow"
COMPONENTS	Crank	Shimano Deore XT 44/32/22	Shimano SLX 44/32/22	FSA K-Force Light 2X9, Trek custom narrow Q factor 42/29	Shimano Deore XT 44/32/22	Shimano Deore XT 44/32/22
	Cassette	SRAM PG950 11-32, 9 speed	SRAM PG950 11-32, 9 speed	Shimano XTR 11-32, 9 speed	SRAM PG970 11-32, 9 speed	SRAM PG970 11-32, 9 speed
	Pedals	n/a	n/a	n/a	n/a	n/a
COMPONENTS	Saddle	Bontrager Rhythm w/hollow Cro-Moly rails	Bontrager Rhythm Basic	Bontrager Race X Lite w/hollow titanium rails	Bontrager Race Lite w/hollow stainless steel rails	Bontrager Race Lite FIT w/hollow stainless steel rails
	Seatpost	Bontrager Race Lite, 5mm offset	Bontrager Race Lite, 5mm offset	Bontrager XXX Lite mast system	Bontrager XXX Lite mast system	Bontrager XXX Lite mast system
	Handlebars	Bontrager Race, 40mm rise, 31.8mm, 690mm width	Bontrager Race, 40mm rise, 31.8mm, 690mm width	Bontrager Race XXX Lite, carbon, 0mm rise, 31.8mm, 580mm width	Bontrager Race X Lite, carbon, 0mm rise, 31.8mm, 620mm width	Bontrager Race X Lite, carbon, 0mm rise, 31.8mm, 620mm width
	Stem	Bontrager Race Lite, 7 degree, 31.8mm	Bontrager Race Lite, 7 degree, 31.8mm	Bontrager Race X Lite, 7 degree, 31.8mm	Bontrager Race X Lite, 7 degree, 31.8mm	Bontrager Race X Lite, 7 degree, 31.8mm
	Headset	Frustum Cane Creek SE Light Edition; 1 1/8" top, 1.5" bottom	Frustum Cane Creek SE Light Edition; 1 1/8" top, 1.5" bottom	Trek Mountain Integrated System w/sealed bearings	Trek Mountain Integrated System w/sealed bearings	Trek Mountain Integrated System w/sealed bearings
	Brakeset	Shimano Deore XT Ti, custom Ti for Trek; 203mm front rotor, 180mm rear rotor	Avid Juicy 5, hydraulic disc; 203mm front rotor, 185mm rear rotor	Shimano XTR Ti hydraulic disc, custom HP hose, Ti version; 160mm front rotor, 140mm rear rotor (Trek exclusive)	Shimano Deore XT Ti hydraulic disc, custom Ti version; 180mm front rotor, 160mm rear rotor (Trek exclusive)	Shimano Deore XT Ti, hydraulic disc, custom Ti version; 160mm rotors (Trek exclusive)

TOP FUEL						
Model		TOP FUEL 8	TOP FUEL 8 WSD	SESSION 88 FR	SESSION 88 DH	TOP FUEL 69ER
FRAMESET	Sizes	15.5, 17.5, 18.5, 19.5, 21.5"	Women's 14.5, 15.5, 16.5, 17.5"	15.5, 17.5, 19.5"	15.5, 17.5, 19.5"	15.5, 17.5, 19.5, 21.5"
	Colors	Chi Red/Pearl White	Metallic Black/Pearl White	Matte Silver	Black/Polished Aluminum	Gloss Black
	Frame	Alpha Red Aluminum w/ABP Race, Full Floater, magnesium EVO Link, oversized bearings, 100mm travel	Alpha Red Aluminum w/ABP Race, Full Floater, magnesium EVO Link, oversized bearings, 100mm travel	Alpha Red Aluminum w/ABP, Full Floater, alloy EVO Link, E2 head tube, oversized bearings, 100mm travel	Alpha Red Aluminum w/ABP, Full Floater, alloy EVO Link, E2 head tube, oversized bearings, 100mm travel	Alpha Red Aluminum w/hydroformed top tube, bi-axial down tube, R1 Race Tuned Suspension, pivotless rear swingarm, Hi/Lo chainstays, oversized sealed bearings, 90mm travel
	Front Suspension	RockShox Reba SL w/remote Pop Loc lever, dual air, Motion Control, rebound, alloy steerer, 100mm	RockShox Reba SL w/remote Pop Loc lever, dual air, Motion Control, rebound, alloy steerer, 100mm	RockShox Totem Coil w/E2 alloy steerer, rebound, high/low speed compression, Mission Control, 180mm	Fox 40 RC2 w/Ti coil spring, high/low speed compression, rebound, internal travel adjust, 203mm	Fox F29 100RL w/air pressure, rebound, lockout, alloy steerer, 100mm, 51mm offset
WHEELS	Rear Suspension	Fox Float RP2, custom "race tuned" w/Pro Pedal, rebound; 6.5x1.5"	Fox Float RP2, custom "race tuned" w/Pro Pedal, rebound; 6.5x1.5"	Fox DHX 5 Coil, custom "gravity tuned" w/external rebound, 15-click Pro Pedal, boost valve; 8.75x2.75"	Fox DHX 5 Coil, custom "gravity tuned" w/external rebound, 15-click Pro Pedal, boost valve; 8.75x2.75"	Fox Float RP2 w/Pro Pedal, rebound, custom tuned
	Wheels	Bontrager Race Lite Disc wheel system, centerlock, tubeless ready	Bontrager Race Lite Disc wheel system, centerlock, tubeless ready	Bontrager Big Earl wheel system, 20mm front, 12mm rear w/150mm spacing	Bontrager Big Earl wheel system, 20mm front, 12mm rear w/150mm spacing	Bontrager Race; 29" front, 26" rear
DRIVETRAIN	Tires	Bontrager Jones XR w/Kevlar bead, 26x2.25/2.2"; 127 tpi	Bontrager Jones XR w/Kevlar bead, 26x2.25/2.2"; 127 tpi	Bontrager Big Earl w/Stability Control Casing, 26x2.5"; 60 tpi	Bontrager Big Earl w/Aramid bead, 26x2.5"; 60 tpi, folding	Bontrager Jones XR, 29x2.25" front, 26x2.2" rear; 120tpi, folding
	Shifters	Shimano SLX SL	Shimano SLX SL	Shimano "New" Saint, Rapidfire Plus	SRAM X-0, 9 speed	SRAM X-7, 9 speed
	Front Derailleur	Shimano SLX SL, high mount	Shimano SLX SL, high mount	MRP System 3 Chainguide w/Party Crasher bash guard	MRP G2 Chainguide	Shimano Deore LX
	Rear Derailleur	Shimano SLX SL "Shadow"	Shimano SLX SL "Shadow"	Shimano "New" Saint "Shadow" SS	SRAM X-0, short cage	SRAM X-0
COMPONENTS	Crank	Shimano SLX 44/32/22	Shimano SLX 44/32/22	Shimano "New" Saint, 83mm bottom bracket, 36T	Shimano "New" Saint, 83mm bottom bracket, 38T	Shimano Deore LX 44/32/22
	Cassette	SRAM PG970 11-32, 9 speed	SRAM PG970 11-32, 9 speed	SRAM PG970 11-32, 9 speed	SRAM PG970 12-26, 9 speed	SRAM PG970 11-34, 9 speed
	Pedals	CrankBrothers Custom Candy C	CrankBrothers Custom Candy C	Bontrager Big Earl platform	Bontrager Big Earl platform	n/a
COMPONENTS	Saddle	Bontrager Race w/hollow Cro-Moly rails	Bontrager Race FIT Lux w/hollow Cro-Moly rails	Bontrager Big Earl	Bontrager Big Earl	Bontrager Race
	Seatpost	Bontrager Race Lite, 5mm offset	Bontrager Race Lite, 5mm offset	Bontrager Big Earl	Bontrager Big Earl	Bontrager Race Lite
	Handlebars	Bontrager Race Lite, 0mm rise, 31.8mm, 600mm width	Bontrager Race, 0mm rise, 31.8mm, 620mm width	Bontrager Earl, 50mm rise, 31.8mm	Bontrager Big Earl, 50mm rise, 31.8mm	Bontrager Race, 40mm rise, 31.8mm
	Stem	Bontrager Race Lite, 7 degree, 31.8mm	Bontrager Race Lite, 7 degree, 31.8mm	Bontrager Big Earl, 10 degree, 31.8mm	Bontrager Big Earl, 10 degree, 31.8mm	Bontrager Race, 7 degree, 31.8mm
	Headset	VP-A58AC-T AHS cartridge	VP-A58AC-T AHS cartridge	Custom Cane Creek E2; 1 1/8" top, 1.5" bottom	Custom Cane Creek; 1 1/8" top, 1.5" bottom w/1 1/8" reducer	Cane Creek ZS-2 w/cartridge bearings, sealed
	Brakeset	Shimano SLX SL; 180mm front rotor, 160mm rear rotor	Shimano SLX; 160mm rotors	Shimano "New" Saint w/Servo Wave; 203mm front rotor, 180mm rear rotor	AVID Juicy Elixir CR; 203mm front rotor, 180mm rear rotor	Avid Juicy 5, hydraulic disc; 160mm rotors

69ER			ELITE			
Model		69ER SINGLE SPEED	69ER 3X9	ELITE 9.9 SSL	ELITE 9.8	ELITE 9.7
FRAMESET	Sizes	15.5, 17.5, 19.5, 21.5"	15.5, 17.5, 19.5, 21.5"	15.5, 17.5, 18.5, 19.5, 21.5"	15.5, 17.5, 18.5, 19.5, 21.5"	15.5, 17.5, 18.5, 19.5, 21.5"
	Colors	Tan/Black	Gloss Black/Gloss White	Onyx Carbon	Platinum/Onyx Carbon	Pearl White/Onyx Carbon
	Frame	Alpha Red Aluminum w/internally and externally relieved head tube, hydroformed bi-axial down tube and top tube, wishbone seatstay, hydroformed chainstays, asymmetric seat tube, forged horizontally adjustable disc dropouts	Alpha Red Aluminum w/internally and externally relieved head tube, hydroformed bi-axial down tube and top tube, wishbone seatstay, hydroformed chainstays, forged and relieved disc ready dropouts	OCLV Red Carbon w/Net Molded head tube and BB90 bottom bracket, "No-Cut" mountain seatmast	TCT Black Carbon w/BB90 bottom bracket, "Drop In" headset bearings	TCT White Carbon w/BB90 bottom bracket, "Drop In" headset bearings
	Front Suspension	Fox F29 RP24 Custom Trek Fork w/4-position platform, air pressure, rebound, compression, lockout, alloy 1 1/4" steerer, Bontrager 51mm offset, 100mm	Fox F29 RL w/air pressure, rebound, lockout, alloy steerer, Bontrager 51mm offset, 100mm	RockShox SID World Cup w/remote Push Loc lever, Carbon Power Bulge, dual air, Motion Control, rebound, alloy steerer, 100mm	RockShox SID Race w/remote Pop Loc lever, dual air, Motion Control, rebound, alloy steerer, 100mm	RockShox Reba SL w/remote Pop Loc lever, dual air, Motion Control, rebound, alloy steerer, 100mm
WHEELS	Wheels	Bontrager Duster, 28mm, 29" front, 26" rear	Bontrager Duster, 28mm, 29" front, 26" rear	Bontrager Race XXX Lite Disc, centerlock w/carbon rims	Bontrager Race X Lite Disc wheel system, centerlock, black	Bontrager Race Lite Disc wheel system, centerlock, tubeless ready
	Tires	Bontrager XDX, 29x2.2" front, 26x2.2" rear, 120tpi, folding	Bontrager XDX, 29x2.25" front, 26x2.2" rear, 120tpi, folding	Bontrager Jones XR Team Edition, 26x2.0"; 127 tpi	Bontrager Jones XR, 26x2.2/2.25"; 120 tpi, folding	Bontrager Jones XR, 26x2.2/2.25"; 60 tpi, folding
DRIVETRAIN	Shifters	n/a	Shimano SLX, 9 speed	Shimano XTR	Shimano Deore XT, 9 speed	Shimano SLX
	Front Derailleur	n/a	Shimano SLX	Shimano XTR	Shimano Deore XT	Shimano SLX
	Rear Derailleur	n/a	Shimano Deore XT "Shadow"	Shimano XTR	Shimano Deore XT "Shadow"	Shimano SLX
	Crank	Bontrager Race Lite Single Speed, 32T	Shimano M542 custom 44/32/22	FSA K-Force Light 2x9, custom narrow Q factor 42/29	Shimano Deore XT 44/32/22	Shimano SLX 44/32/22
	Cassette	Bontrager 16T w/cog chainguide	SRAM PG950 11-32, 9 speed	Shimano XTR 11-32, 9 speed	SRAM PG970 11-32, 9 speed	SRAM PG970 11-32, 9 speed
	Pedals	CrankBrothers Custom Candy C	CrankBrothers Custom Candy C	n/a	n/a	n/a
COMPONENTS	Saddle	Bontrager Race Lite	Bontrager Race	Bontrager Race X Lite	Bontrager Race Lite	Bontrager Race w/hollow Cro-Moly, ti-finish rails
	Seatpost	Bontrager Race Lite	Bontrager Race	Bontrager XXX Lite mast system	Bontrager Race X Lite ACC, carbon	Bontrager Race Lite
	Handlebars	Bontrager Race Lite Big Sweep, 31.8mm, 640mm width	Bontrager Race Big Sweep, 31.8mm, 620mm width	Bontrager Race XXX Lite OS, carbon flat bar, 580mm width	Bontrager Race X Lite OS, carbon flat bar, 620mm width	Bontrager Race OS flat bar, 620mm width
	Stem	Bontrager Race X Lite, 7 degree, 31.8mm	Bontrager Race, 7 degree, 31.8mm	Bontrager Race X Lite, 7 degree, 31.8mm	Bontrager Race X Lite, 7 degree, 31.8mm	Bontrager Race Lite, 7 degree, 31.8mm
	Headset	VP-A58, semi-cartridge bearings, sealed	Cane Creek Z5-3 w/cartridge bearings, sealed	Mountain Integrated, 1 1/4" w/sealed bearings	Mountain Integrated, 1 1/4" w/sealed bearings	Mountain Integrated, 1 1/4" w/sealed bearings
	Brakeset	Avid Elixir R, hydraulic disc; 185mm front rotor, 160mm rear rotor	Avid Juicy 5, hydraulic disc; 185mm front rotor, 160mm rear rotor	Shimano XTR Ti, hydraulic disc, custom HP hose, Ti version; 160mm front rotor, 140mm rear rotor (Trek exclusive)	Shimano Deore XT Ti, hydraulic disc, custom Ti version; 160mm rotors (Trek exclusive)	Shimano SLX SL; 160mm rotors

8 SERIES			6 SERIES			
Model		8500	8000	8000 WSD	6700	6700 WSD
FRAMESET	Sizes	15.5, 17.5, 18.5, 19.5, 21.5"	15.5, 17.5, 18.5, 19.5, 21.5"	Women's 14.5, 15.5, 16.5, 17.5"	15.5, 17.5, 18.5, 19.5, 21.5"	Women's 14.5, 15.5, 16.5, 17.5"
	Colors	Brushed Pewter/Pearl White	Gloss Black/Pearl White	Chi Red	Pearl White/Chi Red	Pearl White
	Frame	Alpha Red Aluminum w/internally and externally relieved head tube, hydroformed bi-axial down tube and top tube, wishbone seatstay, hydroformed chainstays, forged and relieved disc ready dropouts	Alpha Red Aluminum w/internally and externally relieved head tube, hydroformed bi-axial down tube and top tube, wishbone seatstay, hydroformed chainstays, forged and relieved disc ready dropouts	Alpha Red Aluminum w/internally and externally relieved head tube, hydroformed bi-axial down tube and top tube, wishbone seatstay, hydroformed chainstays, forged and relieved disc ready dropouts	Alpha Black Aluminum w/externally relieved head tube, hydroformed bi-axial down tube and top tube, monostay seatstays, forged disc ready dropouts	Alpha Black Aluminum w/externally relieved head tube, hydroformed bi-axial down tube and top tube, monostay seatstays, forged disc ready dropouts
	Front Suspension	Fox F100 RL, custom tuned for Trek w/lockout, air adjust, rebound, alloy steerer, 100mm	RockShox Reba SL w/positive and negative air pressure, Motion Control, rebound, compression, lockout, alloy steerer, 100mm	RockShox Reba SL w/positive and negative air pressure, Motion Control, rebound, compression, lockout, alloy steerer, 100mm	RockShox Recon SL Coil w/TurnKey lockout, alloy steerer, 100mm	RockShox Recon SL Coil w/preload, rebound, TurnKey lockout (14.5" size: light spring), alloy steerer, 100mm
WHEELS	Wheels	Bontrager Race Lite Disc wheel system, centerlock, tubeless ready	Shimano M525 SL rear hub, Bontrager sealed front hub; Bontrager SSR, 32-hole welded rims w/eyelets	Shimano M525 SL rear hub, Bontrager sealed front hub; Bontrager SSR, 32-hole welded rims w/eyelets	Shimano M525 disc hubs; Bontrager Ranger, 32-hole rims w/eyelets	Shimano M525 disc hubs; Bontrager Ranger, 32-hole rims w/eyelets
	Tires	Bontrager Jones XR, 26x2.2/2.25"; 120 tpi, folding	Bontrager Jones XR, 26x2.2/2.25"; 120 tpi, folding	Bontrager Jones XR, 26x2.2/2.25"; 120 tpi, folding	Bontrager Jones XR, 26x2.2/2.25"; 60 tpi, folding	Bontrager Jones XR, 26x2.2/2.25"; 60 tpi, folding
DRIVETRAIN	Shifters	Shimano Deore XT, 9 speed	Shimano SLX SL	Shimano SLX SL	SRAM X-7, 9 speed	SRAM X-7, 9 speed
	Front Derailleur	Shimano Deore XT	Shimano SLX	Shimano SLX	Shimano Deore	Shimano Deore
	Rear Derailleur	Shimano Deore XT "Shadow"	Shimano Deore XT "Shadow"	Shimano Deore XT "Shadow"	SRAM X-9	SRAM X-9
	Crank	Shimano Deore XT 44/32/22	Shimano Deore XT 44/32/22	Shimano Deore XT 44/32/22	Shimano M521 Octalink 44/32/22	Shimano M521 Octalink 44/32/22
	Cassette	SRAM PG970 11-32, 9 speed	SRAM PG970 11-32, 9 speed	SRAM PG970 11-32, 9 speed	SRAM PG950 11-34, 9 speed	SRAM PG950 11-34, 9 speed
	Pedals	n/a	n/a	n/a	Platform ATB style	Platform ATB style
COMPONENTS	Saddle	Bontrager Race Lite	Bontrager Race	Bontrager Race FIT Lux w/hollow Cro-Moly rails	Bontrager Race Basic	Bontrager Race FIT Lux
	Seatpost	Bontrager Race X Lite ACC, carbon	Bontrager Race, 31.6mm, 5mm offset	Bontrager Race, 31.6mm, 5mm offset	Bontrager Race, 31.6mm, 5mm offset	Bontrager Race, 31.6mm, 5mm offset
	Handlebars	Bontrager Race Lite OS flat bar, 600mm width	Bontrager Race OS flat bar, 620mm width	Bontrager Race OS flat bar, 620mm width	Bontrager Race Riser, 40mm rise, 650mm width	Bontrager Race Riser, 25mm rise, 630mm width
	Stem	Bontrager Race X Lite, 7 degree, 31.8mm	Bontrager Race Lite, 7 degree, 31.8mm	Bontrager Race Lite, 7 degree, 31.8mm	Bontrager SSR, 10 degree, 31.8mm	Bontrager SSR, 10 degree, 31.8mm
	Headset	Cane Creek S-3 w/cartridge bearings, sealed	VP-A58ACT-TK, 1 1/4" w/alloy cups, semi-cartridge bearings, sealed	VP-A58ACT-TK, 1 1/4" w/alloy cups, semi-cartridge bearings, sealed	VP-A76C-TK, 1 1/4" semi-cartridge, sealed	VP-A76C-TK, 1 1/4" semi-cartridge, sealed
	Brakeset	Shimano Deore XT Ti hydraulic disc, custom Ti version; 180mm front rotor, 160mm rear rotor (Trek exclusive)	Avid Juicy 5, hydraulic disc; 185mm front rotor, 160mm rear rotor	Avid Juicy 5, hydraulic disc; 160mm rotors	Avid Juicy 3, hydraulic disc; 160mm rotors	Avid Juicy 3, hydraulic disc; 160mm rotors

6 SERIES			4 SERIES			
Model		6500	6000	6000 WSD	4500	4500 WSD
FRAMESET	Sizes	15.5, 17.5, 18.5, 19.5, 21.5"	15.5, 17.5, 18.5, 19.5, 21.5"	Women's 14.5, 15.5, 16.5, 17.5"	13, 16, 18, 19.5, 21, 22.5, 24"	Women's 14, 16, 18"
	Colors	Carrera Blue/Pearl White	Black/Onyx or Red/White	Electric Blue	Metallic Black/Silver or Matte White	Pearl White/Velvet Brown
	Frame	Alpha Black Aluminum w/externally relieved head tube, hydroformed bi-axial down tube and top tube, monostay seatstays, forged disc ready dropouts	Alpha Black Aluminum w/externally relieved head tube, hydroformed bi-axial down tube and top tube, monostay seatstays, forged disc ready dropouts	Alpha Black Aluminum w/externally relieved head tube, hydroformed bi-axial down tube and top tube, monostay seatstays, forged disc ready dropouts	Alpha Black Aluminum w/externally relieved head tube, hydroformed bi-axial down tube, monostay seatstays, forged disc ready dropouts	Alpha Black Aluminum w/externally relieved head tube, hydroformed bi-axial down tube, monostay seatstays, forged disc ready dropouts
	Front Suspension	RockShox Tora SL Coil w/rebound, TurnKey lockout, alloy steerer, 100mm	RockShox Dart 3 w/preload, lockout, alloy steerer, 100mm	RockShox Dart 3 w/preload, lockout (14.5" size: custom spring weight), alloy steerer, 100mm	RockShox Dart 3 w/preload, lockout, alloy steerer, 100mm	RockShox Dart 3 w/preload, lockout (14" size: light spring), alloy steerer, 100mm
WHEELS	Wheels	Shimano M535 centerlock disc hubs; Bontrager Ranger, 32-hole rims w/eyelets	Shimano M475 disc hubs; Bontrager Ranger, 32-hole rims w/eyelets	Shimano M475 disc hubs; Bontrager Ranger, 32-hole rims w/eyelets	Alloy front hub, Shimano RM30 rear hub; Bontrager Camino, 32-hole rims w/eyelets, machined sidewalls	Alloy front hub, Shimano RM30 rear hub; Bontrager Camino, 32-hole rims w/eyelets, machined sidewalls
	Tires	Bontrager Jones XR, 26x2.2/2.25"; 27 tpi	Bontrager Jones XR, 26x2.2/2.25"; 52/54/27tpi	Bontrager Jones XR, 26x2.2/2.25"; 52/54/27tpi	Bontrager Jones ACX, 26x2.1"; 27 tpi	Bontrager Jones ACX, 26x2.1"; 27 tpi
DRIVETRAIN	Shifters	Shimano Deore, 9 speed	SRAM X-5, 9 speed	SRAM X-5, 9 speed	Shimano Alivio, 8 speed	Shimano Alivio, 8 speed
	Front Derailleur	Shimano Deore	SRAM X-5	SRAM X-5	Shimano Acera	Shimano Acera
	Rear Derailleur	Shimano SLX	SRAM X-5	SRAM X-5	Shimano Deore	Shimano Deore
	Crank	Shimano M442 Octalink 44/32/22	Shimano M442 Octalink 44/32/22	Shimano M442 Octalink 44/32/22	Shimano M341 42/32/22	Shimano M341 42/32/22
	Cassette	SRAM PG950 11-34, 9 speed	SRAM PG950 11-34, 9 speed	SRAM PG950 11-34, 9 speed	SRAM PG830 11-32, 8 speed	SRAM PG830 11-32, 8 speed
	Pedals	Alloy platform	Alloy platform	Alloy platform	Alloy platform	Alloy platform
COMPONENTS	Saddle	Bontrager Race Basic	Bontrager Race Basic	Bontrager Race FIT Lux	Bontrager Select Basic	Bontrager Select FIT Basic
	Seatpost	Bontrager Race, 31.6mm, 5mm offset	Bontrager SSR, 20mm offset	Bontrager SSR, 20mm offset	Bontrager SSR, 20mm offset	Bontrager SSR, 20mm offset
	Handlebars	Bontrager Race Riser, 40mm rise, 650mm width	Bontrager SSR Riser, 25mm rise, 25.4mm, 620mm width	Bontrager SSR, 25mm rise, 25.4mm, 600mm width	Bontrager SSR Riser, 25mm rise, 25.4mm, 620mm width	Bontrager SSR, 25mm rise, 25.4mm, 600mm width
	Stem	Bontrager SSR, 10 degree, 31.8mm	Bontrager SSR, 10 degree, 25.4mm	Bontrager SSR, 10 degree, 25.4mm	Bontrager SSR, 10 degree, 25.4mm	Bontrager SSR, 25 degree, 25.4mm
	Headset	VP-A76C-TK, 1 1/4" semi-cartridge, sealed	VP-A76C-TK, 1 1/4" semi-cartridge, sealed	VP-A76C-TK, 1 1/4" semi-cartridge, sealed	VP-A76C-TK, 1 1/4" semi-cartridge, sealed	VP-A76C-TK, 1 1/4" semi-cartridge, sealed
	Brakeset	Shimano BRM 486; 160mm rotors	Avid BB-5, mechanical disc w/alloy levers	Avid BB-5, mechanical disc w/alloy levers	Avid SD-3 w/alloy levers	Avid SD-3 w/Tektro adjustable reach alloy levers

4 SERIES			3 SERIES			
Model		4300 DISC	4300	4300 WSD	3900 DISC	3900
FRAMESET	Sizes	13, 16, 18, 19.5, 21, 22.5, 24"	13, 16, 18, 19.5, 21, 22.5, 24"	Women's 14, 16, 18"	13, 16, 18, 19.5, 21, 22.5"	13, 16, 18, 19.5, 21, 22.5"
	Colors	Silver/Black Chrome, Matte Black or Matte Orange	Silver/Black Chrome, Matte Black or Matte Orange	Pearl White/Pomegranate	Matte Khaki	Matte Khaki or Metallic Blue/Brushed Silver
	Frame	Alpha Black Aluminum w/externally relieved head tube, hydroformed bi-axial down tube and top tube, monostay seatstays, forged disc ready dropouts	Alpha Black Aluminum w/externally relieved head tube, hydroformed bi-axial down tube, monostay seatstays, forged disc ready dropouts	Alpha Black Aluminum w/externally relieved head tube, hydroformed bi-axial down tube, monostay seatstays, forged disc ready dropouts	Alpha White Aluminum w/externally relieved head tube, bi-axial down tube, disc compatible dropouts	Alpha White Aluminum w/externally relieved head tube, bi-axial down tube, disc compatible dropouts
	Front Suspension	RST Gila T8 w/preload, 100mm	RST Gila T8 w/preload, 100mm	RST Gila T8 w/preload, 100mm	SR Suntour XCT V2 w/preload, 80mm	SR Suntour XCT V2 w/preload, 80mm
WHEELS	Wheels	Shimano M65 disc hubs; Bontrager Ranger rims w/eyelets	Alloy front hub, Shimano RM30 rear hub; Bontrager Camino, 32-hole rims w/eyelets, machined sidewalls	Alloy front hub, Shimano RM30 rear hub; Bontrager Camino, 32-hole rims w/eyelets, machined sidewalls	Alloy front hub, Shimano M475 rear hub; Matrix 550 rims w/brushed sidewalls	Alloy front hub, Shimano RM30 rear hub; Matrix 550 rims w/brushed sidewalls
	Tires	Bontrager Jones ACX, 26x2.1"; 27 tpi	Bontrager Connection Trail, 26x2.0"; 27 tpi	Bontrager Connection Trail, 26x2.0"; 27 tpi	Bontrager Connection Trail, 26x2.0"; 27 tpi	Bontrager Connection Trail, 26x2.0"; 27 tpi
DRIVETRAIN	Shifters	Shimano EF50, 8 speed	Shimano EF50, 8 speed	Shimano EF50, 8 speed	Shimano EF50, 8 speed	Shimano EF50, 8 speed
	Front Derailleur	Shimano C050	Shimano C050	Shimano C050	Shimano C050	Shimano C050
	Rear Derailleur	Shimano Alivio	Shimano Alivio	Shimano Alivio	Shimano Acera	Shimano Acera
	Crank	SR Suntour XCC-T102 42/34/24	SR Suntour XCC-T102 42/34/24	SR Suntour XCC-T102 42/34/24	SR Suntour XCC-T102 42/34/24	SR Suntour XCC-T102 42/34/24
	Cassette	SRAM PG830 11-32, 8 speed	SRAM PG830 11-32, 8 speed	SRAM PG830 11-32, 8 speed	SRAM PG830 11-32, 8 speed	SRAM PG830 11-32, 8 speed
	Pedals	Alloy ATB	Alloy platform	Alloy platform	Nylon platform	Nylon platform
COMPONENTS	Saddle	Bontrager Race Lux Basic	Bontrager Select Basic	Bontrager Select FIT Basic	Bontrager Approved	Bontrager Approved
	Seatpost	Bontrager SSR, 20mm offset	Bontrager SSR, 20mm offset	Bontrager SSR, 20mm offset	Bontrager SSR, 20mm offset	Bontrager SSR, 20mm offset
	Handlebars	Bontrager SSR, 25mm rise	Bontrager SSR, 25mm rise	Bontrager SSR, 25mm rise	Bontrager Approved, 30mm rise	Bontrager Approved, 30mm rise
	Stem	Bontrager SSR, 10 degree	Bontrager SSR, 25 degree	Bontrager SSR, 25 degree	Bontrager Approved, 25 degree	Bontrager Approved, 25 degree
	Headset	VP-A76C-TK, 1 1/4" semi-cartridge, sealed	VP-A76C-TK, 1 1/4" semi-cartridge, sealed	VP-A76C-TK, 1 1/4" semi-cartridge, sealed	VP-A76C-TK, 1 1/4" semi-cartridge, sealed	VP-A76C-TK, 1 1/4" semi-cartridge, sealed
	Brakeset	Shimano M415, mechanical disc w/Shimano EF50 levers	Tektro V w/Shimano EF50 levers	Tektro V w/Shimano EF50 levers	Promax, mechanical disc w/Shimano EF50 levers	Tektro V w/Shimano EF50 levers

3 SERIES			820		
Model		3900 WSD	3700	3700 WSD	820 WSD
FRAMESET	Sizes	Women's 13, 16, 19.5"	13, 16, 18, 19.5, 21, 22.5"	Women's 13, 16, 19.5"	13, 16, 18, 19.5, 21, 22.5"
	Colors	Soft Blue/Velvet Blue	Raw Brushed, Trek Red/Pearl White or Acid Gold	Silver/White	Matte Blue or Gloss Black/Gloss White
	Frame	Alpha White Aluminum w/externally relieved head tube, bi-axial down tube, disc compatible dropouts	Alpha White Aluminum w/externally relieved head tube, bi-axial down tube, disc compatible dropouts	Alpha White Aluminum w/externally relieved head tube, bi-axial down tube, disc compatible dropouts	Trek Custom Steel w/Cro-Moly seat tube
	Front Suspension	SR Suntour XCT V2 w/preload (13" size: custom spring weight), 80mm	SR Suntour M-2025, 63mm	SR Suntour M-2025, custom spring weight, 63mm	SR Suntour M-2025, custom spring weight, 63mm
WHEELS	Wheels	Alloy front hub, Shimano RM30 rear hub; Matrix 550 rims w/brushed sidewalls	Alloy hubs; Matrix 550 rims w/brushed sidewalls	Alloy hubs; Matrix 550 rims w/brushed sidewalls	Alloy hubs; Matrix 550 rims w/brushed sidewalls
	Tires	Bontrager Connection Trail, 26x2.0"; 27 tpi	Bontrager Connection Trail, 26x2.0"	Bontrager Connection Trail, 26x2.0"	Bontrager Connection Trail, 26x2.0"
DRIVETRAIN	Shifters	Shimano EF50, 8 speed	Shimano EF50, 7 speed	Shimano EF50, 7 speed	Shimano EF50, 7 speed
	Front Derailleur	Shimano C050	Shimano C051	Shimano C051	Shimano C051
	Rear Derailleur	Shimano Acera	Shimano Acera	Shimano Acera	Shimano Acera
	Crank	SR Suntour XCC-T102 42/34/24	SR Suntour XCC-T208 48/38/28	SR Suntour XCC-T208 48/38/28	SR Suntour XCC-T208 48/38/28
	Cassette	SRAM PG830 11-32, 8 speed	Sun Race 13-34, 7 speed	Sun Race 13-34, 7 speed	Sun Race 13-34, 7 speed
	Pedals	Nylon platform	Nylon platform	Nylon platform	Nylon platform
COMPONENTS	Saddle	Bontrager Approved FIT	Bontrager Approved	Bontrager Approved FIT	Bontrager Approved
	Seatpost	Bontrager SSR, 20mm offset	Bontrager SSR, 20mm offset	Bontrager SSR, 20mm offset	Bontrager Approved
	Handlebars	Bontrager Approved, 30mm rise	Bontrager Approved, 30mm rise	Bontrager Approved, 30mm rise	Bontrager Approved, 30mm rise
	Stem	Bontrager Approved, 40 degree	Bontrager Approved, 25 degree	Bontrager Approved, 40 degree	Bontrager Approved, 40 degree
	Headset	VP-A76C-TK, 1 1/4" semi-cartridge, sealed	VP-A76C-TK, 1 1/4" semi-cartridge, sealed	VP-A76C-TK, 1 1/4" semi-cartridge, sealed	VP-A76C-TK, 1 1/4" semi-cartridge, sealed
	Brakeset	Tektro V w/Shimano EF50 levers	Tektro V w/Shimano EF50 levers	Tektro V w/Shimano EF50 levers	Tektro V w/Shimano EF50 levers



Geometries

FUEL EX

REMEDY

TOP FUEL

SESSION 88

69ER

ELITE

HARDTAIL

		virtual frame size	actual frame size	A head angle	B seat angle	C effective top tube	D chain stay	E bottom bracket	F offset	wheelbase	trail	stand over	BB to seat rail (cm)		
													minimum	max. (145mm post)	max. (245mm post)
Fuel EX 9.9 Fuel EX 9.8	S 15.5"	39.4 / 15.5	69.0°	73.5°	55.3 / 21.8	43.0 / 16.9	33.8 / 13.3	4.0 / 1.6	106.4 / 41.9	8.5 / 3.3	72.7 / 28.6				
	M 17.5"	41.9 / 16.5	69.0°	73.5°	59.0 / 23.2	43.0 / 16.9	33.8 / 13.3	4.0 / 1.6	110.3 / 43.4	8.5 / 3.3	74.1 / 29.2				
	ML 18.5"	44.5 / 17.5	69.0°	73.5°	60.9 / 24.0	43.0 / 16.9	33.8 / 13.3	4.0 / 1.6	111.3 / 43.8	8.5 / 3.3	75.8 / 29.8				
	L 19.5"	47.0 / 18.5	69.0°	73.5°	62.7 / 24.7	43.0 / 16.9	33.8 / 13.3	4.0 / 1.6	114.0 / 44.9	8.5 / 3.3	77.3 / 30.4				
	XL 21.5"	50.8 / 20.0	69.0°	73.5°	64.5 / 25.4	43.0 / 16.9	33.8 / 13.3	4.0 / 1.6	116.0 / 45.7	8.5 / 3.3	80.0 / 31.5				
Fuel EX 9 Fuel EX 8 Fuel EX 7 Fuel EX 6.5 Fuel EX 5.5	S 15.5"	39.4 / 15.5	69.0°	72.5°	55.3 / 21.8	43.0 / 16.9	33.8 / 13.3	4.0 / 1.6	106.4 / 41.9	8.5 / 3.3	72.7 / 28.6				
	M 17.5"	41.9 / 16.5	69.0°	72.5°	59.0 / 23.2	43.0 / 16.9	33.8 / 13.3	4.0 / 1.6	110.3 / 43.4	8.5 / 3.3	74.1 / 29.2				
	ML 18.5"	44.5 / 17.5	69.0°	72.5°	60.9 / 24.0	43.0 / 16.9	33.8 / 13.3	4.0 / 1.6	111.3 / 43.8	8.5 / 3.3	75.8 / 29.8				
	L 19.5"	47.0 / 18.5	69.0°	72.5°	62.7 / 24.7	43.0 / 16.9	33.8 / 13.3	4.0 / 1.6	114.0 / 44.9	8.5 / 3.3	77.3 / 30.4				
	XL 21.5"	50.8 / 20.0	69.0°	72.5°	64.5 / 25.4	43.0 / 16.9	33.8 / 13.3	4.0 / 1.6	116.0 / 45.7	8.5 / 3.3	80.0 / 31.5				
Fuel EX 8 WSD Fuel EX 5.5 WSD	XS 14.5"	36.8 / 14.5	69.0°	72.5°	53.8 / 21.2	43.0 / 16.9	33.8 / 13.3	4.0 / 1.6	103.6 / 40.8	8.5 / 3.3	71.5 / 28.1				
	S 15.5"	39.4 / 15.5	69.0°	72.5°	55.3 / 21.8	43.0 / 16.9	33.8 / 13.3	4.0 / 1.6	106.4 / 41.9	8.5 / 3.3	72.7 / 28.6				
	SM 16.5"	41.9 / 16.5	69.0°	72.5°	57.2 / 22.5	43.0 / 16.9	33.8 / 13.3	4.0 / 1.6	107.1 / 42.2	8.5 / 3.3	73.5 / 28.9				
	M 17.5"	41.9 / 16.5	69.0°	72.5°	59.0 / 23.2	43.0 / 16.9	33.8 / 13.3	4.0 / 1.6	110.3 / 43.4	8.5 / 3.3	74.1 / 29.2				
	S 15.5"	40.5 / 15.9	67.0°	72.0°	55.5 / 21.9	41.9 / 16.5	35.0 / 13.8	4.0 / 1.6	109.5 / 43.1	9.8 / 3.9	74.0 / 29.1				
Remedy 9 Remedy 8 Remedy 7	M 17.5"	41.3 / 16.3	67.0°	72.0°	59.1 / 23.3	41.9 / 16.5	35.0 / 13.8	4.0 / 1.6	113.2 / 44.6	9.8 / 3.9	74.5 / 29.3				
	L 19.5"	47.0 / 18.5	67.0°	72.0°	61.5 / 24.2	41.9 / 16.5	35.0 / 13.8	4.0 / 1.6	115.7 / 45.6	9.8 / 3.9	76.0 / 29.9				
	XL 21.5"	50.8 / 20.0	67.0°	72.0°	64.4 / 25.4	41.9 / 16.5	35.0 / 13.8	4.0 / 1.6	118.8 / 46.8	9.8 / 3.9	78.0 / 30.7				
	S 15.5"	51.5 / 20.3	70.0°	73.5°	53.5 / 21.1	42.7 / 16.8	32.7 / 12.9	4.0 / 1.6	105.3 / 41.5	7.8 / 3.1	72.5 / 28.5	57.5	63.5	70.5	
	M 17.5"	54.0 / 21.3	70.0°	73.5°	56.6 / 22.3	42.7 / 16.8	32.7 / 12.9	4.0 / 1.6	109.1 / 43.0	7.8 / 3.1	75.9 / 29.9	60.0	66.0	73.0	
Top Fuel 9.9 SSL Top Fuel 9.8	ML 18.5"	57.0 / 22.4	70.0°	73.5°	60.5 / 23.8	42.7 / 16.8	32.7 / 12.9	4.0 / 1.6	111.2 / 43.8	7.8 / 3.1	77.6 / 30.6	63.0	69.0	76.0	
	L 19.5"	59.0 / 23.2	70.0°	73.5°	62.5 / 24.6	42.7 / 16.8	32.7 / 12.9	4.0 / 1.6	113.2 / 44.6	7.8 / 3.1	79.6 / 31.3	65.0	71.0	78.5	
	XL 21.5"	63.0 / 24.8	70.0°	73.5°	64.1 / 25.2	42.7 / 16.8	32.7 / 12.9	4.0 / 1.6	115.0 / 45.3	7.8 / 3.1	83.1 / 32.7	69.0	75.0	82.5	
	S 15.5"	51.5 / 20.3	70.0°	73.5°	53.5 / 21.1	42.7 / 16.8	32.7 / 12.9	4.0 / 1.6	105.3 / 41.5	7.8 / 3.1	72.5 / 28.5	57.5	63.5	70.5	
	SM 16.5"	53.0 / 20.9	70.0°	73.5°	54.8 / 21.6	42.7 / 16.8	32.7 / 12.9	4.0 / 1.6	107.2 / 42.2	7.8 / 3.1	74.2 / 29.2	59.0	65.0	72.0	
Top Fuel 9.8 WSD	M 17.5"	54.0 / 21.3	70.0°	73.5°	56.6 / 22.3	42.7 / 16.8	32.7 / 12.9	4.0 / 1.6	109.1 / 43.0	7.8 / 3.1	75.9 / 29.9	60.0	66.0	73.0	
	S 15.5"	39.4 / 15.5	70.0°	73.5°	54.8 / 21.6	42.7 / 16.8	32.7 / 12.9	4.0 / 1.6	105.3 / 41.5	7.8 / 3.1	72.5 / 28.5				
	M 17.5"	44.4 / 17.5	70.0°	73.5°	58.5 / 23.0	42.7 / 16.8	32.7 / 12.9	4.0 / 1.6	109.1 / 43.0	7.8 / 3.1	75.9 / 29.9				
	ML 18.5"	47.0 / 18.5	70.0°	73.5°	60.5 / 23.8	42.7 / 16.8	32.7 / 12.9	4.0 / 1.6	111.2 / 43.8	7.8 / 3.1	77.6 / 30.6				
	L 19.5"	49.5 / 19.5	70.0°	73.5°	62.5 / 24.6	42.7 / 16.8	32.7 / 12.9	4.0 / 1.6	113.2 / 44.6	7.8 / 3.1	79.6 / 31.3				
Top Fuel 8	XL 21.5"	54.6 / 21.5	70.0°	73.5°	64.1 / 25.2	42.7 / 16.8	32.7 / 12.9	4.0 / 1.6	115.0 / 45.3	7.8 / 3.1	83.1 / 32.7				
	S 15.5"	39.4 / 15.5	70.0°	73.5°	53.5 / 21.1	42.7 / 16.8	32.7 / 12.9	4.0 / 1.6	104.0 / 40.9	7.8 / 3.1	71.2 / 28.0				
	M 17.5"	44.4 / 17.5	70.0°	73.5°	54.8 / 21.6	42.7 / 16.8	32.7 / 12.9	4.0 / 1.6	105.3 / 41.5	7.8 / 3.1	72.5 / 28.5				
	SM 16.5"	41.9 / 16.5	70.0°	73.5°	56.6 / 22.3	42.7 / 16.8	32.7 / 12.9	4.0 / 1.6	107.2 / 42.2	7.8 / 3.1	74.2 / 29.2				
	M 17.5"	44.4 / 17.5	70.0°	73.5°	58.5 / 23.0	42.7 / 16.8	32.7 / 12.9	4.0 / 1.6	109.1 / 43.0	7.8 / 3.1	75.9 / 29.9				
Top Fuel 8 WSD	S 15.5"	39.4 / 15.5	70.0°	73.5°	54.8 / 21.6	42.7 / 16.8	32.7 / 12.9	4.0 / 1.6	105.3 / 41.5	7.8 / 3.1	72.5 / 28.5				
	SM 16.5"	41.9 / 16.5	70.0°	73.5°	56.6 / 22.3	42.7 / 16.8	32.7 / 12.9	4.0 / 1.6	107.2 / 42.2	7.8 / 3.1	74.2 / 29.2				
	M 17.5"	44.4 / 17.5	70.0°	73.5°	58.5 / 23.0	42.7 / 16.8	32.7 / 12.9	4.0 / 1.6	109.1 / 43.0	7.8 / 3.1	75.9 / 29.9				
	S 15.25"	38.7 / 15.2	65.0°	58.0°	57.3 / 22.6	44.0 / 17.3	36.3 / 14.3	4.5 / 1.8	114.5 / 45.1	11.0 / 4.3	83.0 / 32.7				
	M 17.5"	41.9 / 16.5	65.0°	58.0°	59.6 / 23.5	44.0 / 17.3	36.3 / 14.3	4.5 / 1.8	116.8 / 46.0	11.0 / 4.3	83.0 / 32.7				
Session 88 FR Session 88 DH	L 19.5"	45.7 / 18.0	65.0°	58.0°	62.2 / 24.5	44.0 / 17.3	36.3 / 14.3	4.5 / 1.8	119.3 / 47.0	11.0 / 4.3	83.0 / 32.7				
	S 15.5"	37.7 / 14.8	69.0°	72.5°	55.3 / 21.8	42.7 / 16.8	32.7 / 12.9	5.1 / 2.0	105.8 / 41.7	8.7 / 3.4	73.2 / 28.8				
	M 17.5"	40.2 / 15.8	69.0°	72.5°	59.1 / 23.3	42.7 / 16.8	32.7 / 12.9	5.1 / 2.0	109.6 / 43.2	8.7 / 3.4	74.1 / 29.2				
	L 19.5"	45.3 / 17.8	69.0°	72.5°	62.8 / 24.7	42.7 / 16.8	32.7 / 12.9	5.1 / 2.0	113.4 / 44.7	8.7 / 3.4	77.1 / 30.4				
	XL 21.5"	49.1 / 19.3	69.0°	72.5°	64.5 / 25.4	42.7 / 16.8	32.7 / 12.9	5.1 / 2.0	115.2 / 45.4	8.7 / 3.4	79.6 / 31.3				
Top Fuel 69er	S 15.5"	39.4 / 15.5	69.0°	73.0°	57.5 / 22.6	42.1 / 16.6	30.7 / 12.1	4.7 / 1.9	105.5 / 41.5	8.9 / 3.5	75.6 / 29.8				
	M 17.5"	44.4 / 17.5	69.0°	73.0°	58.8 / 23.1	42.1 / 16.6	30.7 / 12.1	4.7 / 1.9	108.5 / 42.7	8.9 / 3.5	75.6 / 29.8				
	L 19.5"	49.5 / 19.5	69.0°	73.0°	62.5 / 24.6	42.1 / 16.6	30.7 / 12.1	4.7 / 1.9	112.2 / 44.2	8.9 / 3.5	78.3 / 30.8				
	XL 21.5"	54.6 / 21.5	69.0°	72.5°	64.6 / 25.4	42.1 / 16.6	30.7 / 12.1	4.7 / 1.9	113.7 / 44.8	8.9 / 3.5	81.4 / 32.0				
	S 15.5"	39.4 / 15.5	69.0°	72.0°	56.7 / 22.3	42.4 / 16.7	31.4 / 12.4	5.1 / 2.0	106.1 / 41.8	8.6 / 3.4	72.8 / 28.7				
69er Single Speed	M 17.5"	44.5 / 17.5	69.0°	72.0°	58.0 / 22.8	42.4 / 16.7	31.4 / 12.4	5.1 / 2.0	107.5 / 42.3	8.6 / 3.4	76.0 / 29.9				
	L 19.5"	49.5 / 19.5	69.0°	72.0°	61.8 / 24.3	42.4 / 16.7	31.4 / 12.4	5.1 / 2.0	111.3 / 43.8	8.6 / 3.4	78.7 / 31.0				
	XL 21.5"	54.6 / 21.5	69.0°	72.0°	63.8 / 25.1	42.4 / 16.7	31.4 / 12.4	5.1 / 2.0	113.3 / 44.6	8.6 / 3.4	81.8 / 32.2				
	S 15.5"	51.5 / 20.3	70.0°	73.0°	55.5 / 21.9	42.3 / 16.7	30.5 / 12.0	4.0 / 1.6	104.3 / 41.1	7.9 / 3.1	73.3 / 28.9	57.5	63.5	70.5	
	M 17.5"	54.0 / 21.3	70.0°	73.0°	59.1 / 23.3	42.3 / 16.7	30.5 / 12.0	4.0 / 1.6	108.0 / 42.5	7.9 / 3.1	76.4 / 30.1	60.0	66.0	73.0	
Elite 9.9 SSL Elite 9.8 Elite 9.7	ML 18.5"	57.0 / 22.4	70.0°	73.0°	61.0 / 24.0	42.3 / 16.7	30.5 / 12.0	4.0 / 1.6	109.9 / 43.3	7.9 / 3.1	78.1 / 30.7	63.0	69.0	76.0	
	L 19.5"	59.0 / 23.2	70.0°	73.0°	62.6 / 24.6	42.3 / 16.7	30.5 / 12.0	4.0 / 1.6	111.5 / 43.9	7.9 / 3.1	80.0 / 31.5	65.0	71.0	78.5	
	XL 21.5"	63.0 / 24.8	70.0°	73.0°	64.5 / 25.4	42.3 / 16.7	30.5 / 12.0	4.0 / 1.6	113.3 / 44.6	7.9 / 3.1	84.1 / 33.1	69.0	75.0	82.5	
	S 15.5"	39.4 / 15.5	71.0°	73.5°	55.5 / 21.9	42.4 / 16.7	29.7 / 11.7	4.0 / 1.6	103.0 / 40.5	7.2 / 2.9	71.7 / 28.2				
	M 17.5"	44.6 / 17.5	71.0°	73.0°	58.8 / 23.1	42.4 / 16.7	29.7 / 11.7	4.0 / 1.6	106.3 / 41.8	7.2 / 2.9	74.7 / 29.4				
8500 8000 6700 6500 6000	ML 18.5"	47.0 / 18.5	71.0°	73.0°	60.7 / 23.9	42.4 / 16.7	29.7 / 11.7	4.0 / 1.6	108.2 / 42.6	7.2 / 2.9	76.3 / 30.0				
	L 19.5"	49.5 / 19.5	71.0°	73.0°	62.5 / 24.6	42.4 / 16.7	29.7 / 11.7	4.0 / 1.6	110.0 / 43.3	7.2 / 2.9	77.9 / 30.7				
	XL 21.5"	54.6 / 21.5	71.0°	72.5°	64.1 / 25.2	42.4 / 16.7	29.7 / 11.7	4.0 / 1.6	111.2 / 43.8	7.2 / 2.9	81.5 / 32.1				
	S 15.5"	39.4 / 15.5	71.0°	73.5°	55.5 / 21.9	42.4 / 16.7	29.7 / 11.7	4.0 / 1.6	101.5 / 39.9	7.2 / 2.9	70.6 / 27.8				
	M 17.5"	44.6 / 17.5	71.0°	73.5°	58.8 / 23.1	42.4 / 16.7	29.7 / 11.7	4.0 / 1.6	106.3 / 41.8	7.2 / 2.9	74.7 / 29.4				
8000 WSD 6700 WSD 6000 WSD	L 17.5"	44.6 / 17.5	71.0°	73.0°	58.8 / 23.1	42.4 / 16.7	29.7 / 11.7	4.0 / 1.6	106.3 / 41.8	7.2 / 2.9	74.7 / 29.4				
	S 15.5"	39.4 / 15.5	71.0°	73.5°	55.5 / 21.9	42.4 / 16.7	29.7 / 11.7	4.0 / 1.6	103.0 / 40.5	7.2 / 2.9	71.7 / 28.2				
	M 16.5"	41.9 / 16.5	71.0°	73.5°	56.9 / 22.4	42.4 / 16.7	29.7 / 11.7	4.0 / 1.6	104.9 / 41.3	7.2 / 2.9	73.5 / 28.9				
	L 17.5"	44.6 / 17.5	71.0°	73.0°	58.8 / 23.1	42.4 / 16.7	29.7 / 11.7	4.0 / 1.6	106.3 / 41.8	7.2 / 2.9	74.7 / 29.4				
	XS 13"	33.0 / 13.0	70.0°	74.0°	52.5 / 20.7	43.0 / 16.9	28.7 / 11.3	3.8 / 1.5	102.1 /						

Trek Limited Lifetime Warranty

Trek Bicycle Corporation provides each original retail purchaser of the bicycle a lifetime warranty against defects in materials and workmanship in the bicycle frame and rigid fork when purchased from an authorized Trek dealer. Trek Bicycle Corporation likewise warrants all original parts on the bicycle, excluding suspension forks and rear shock absorbers, for a period of one year from the date of purchase. Suspension forks and rear shock absorbers shall be covered by the stated warranty of their original manufacturers. Paint and decals are warranted for one year. This warranty is expressly limited to the repair or replacement of a defective frame, fork, or defective part and is the sole remedy of the warranty. This warranty applies only to the original owner and is not transferable. Claims under this warranty must be made through an authorized Trek dealer. Proof of purchase is required. A warranty registration card must be completed and received by the Trek Bicycle Corporation before a warranty claim may be processed. This warranty covers bicycles and components outside the United States only if purchased through an authorized international Trek distributor or Trek dealer within the country of purchase. The warranty does not cover normal wear and tear, improper assembly or follow-up maintenance, installation of parts or accessories not originally intended or compatible with the bicycle as sold, damage or failure due to accident, misuse or neglect, or modification of the frame, fork or components.

Trek Bicycle Corporation shall not be responsible for incidental or consequential damages. Some states do not allow the exclusion of incidental or consequential damages, so the above exclusion may not apply to you. This warranty gives the consumer specific legal rights, and those rights may vary from place to place. This warranty does not affect the statutory rights of the consumer.

All photos, illustrations, colors, weights, and specifications contained in this catalog are based on the latest production information at the time of publication. Trek reserves the right to make changes at any time, without notice, in colors, materials, equipment, specifications and models. Any variations in colors shown may be due to the reproductive variations of the printing process. Photos may include non-U.S. equipment. Some models may be shown with optional equipment. Off road bike weights based on medium or 18 inch frame size. Road bike weights based on 56cm frame size.

All Trek bikes are sold exclusively through our network of Authorized Dealers who we entrust with professional assembly and service of your bicycle. Trek extends a Lifetime Warranty on every frame.

©2008 Trek Bicycle Corporation. All rights reserved. Trek/Bontrager is a registered trademark of Trek Bicycle Corporation. Shimano, RockShox and Nike are registered trademarks of Shimano American Corporation, SRAM Corporation and Nike Inc., respectively. U.S. Pat. Nos. 5,624,519; 5,629,668; 5,685,553; 5,715,544; 5,734,142; 5,931,544; 6,045,470; 6,092,438; 6,109,638; 6,164,676; 6,203,042; 6,270,104; 6,497,042; 6,572,249; 6,637,244; 6,637,061; 6,749,212 and others pending.

Designed by Hanson Dodge Creative. Contributing photographers: John Laptad, Sterling Lorence, Sven Martin, Colin Meagher, NSYNC Studio, Bradley Rochford, Damian Strigens.

EUROPEAN CENTRAL OFFICE Bikeurope B.V. Basicweg 12 3821 BR Amersfoort The Netherlands **SUBSIDIARIES** **Austria** Bikeurope B.V. / Trek Austria Tel: +43 (0) 820 820 121 **Benelux** Bikeurope B.V. Tel: +31 (0) 33 45 09 040 **China** Trek Bicycle Corporation Tel: 86-10-8459-5392 **Denmark** Bikeurope B.V. / Trek Denmark Tel: +45 70 27 15 40 **France** Bikeurope B.V. / Trek France Tel: +33 (0) 8 25 00 44 04 **Germany** Bikeurope B.V./Trek Deutschland Tel: +49 (0) 180 350 7010 **Japan** Trek Japan Corporation Tel: +81 (0) 78 413 6606 **Spain** Trek Bicycle S.L. Tel: +34 (0) 91 848 95 60 **Switzerland** Trek Fahrrad GmbH Tel: +41 (0) 44 824 85 00 **United Kingdom** Trek Bicycle Corporation Ltd. Tel: +44 (0)1 908 28 26 26 **TREK DISTRIBUTORS** **Argentina** Bike Sports S.R.L Tel: 5411 4797 6562 **Aruba** Tri-Bike Aruba Tel: 297 5 852 734 **Australia** Trek Bicycles Australia Pty. Ltd. Tel: 61 2 8832 6900 **Bahrain** Skate Shack Tel: 973 17 697176 **Barbados** Taylor's Cycle Centre Ltd Tel: 246 426 3421 **Belarus** DiscoverySport Tel: 375 172 270 187 **Belize** Bruce Cycling Club Bike Shop Tel: 501 22 37979 **Bermuda** Winner's Edge Tel: 441 295 6012 **Bolivia** Bicar Tel: 591 2 241 2291 **Bonaire** ECO Experience N.V. Tel: 599 717 2227 **Brazil** International Sports do Brazil Ltda. Tel: 55 19 3886 7270 **Brunei** Trekology Bikes 3 Pte Ltd. Tel: 65 62754675 **Bulgaria** Velomania Ltd. Tel: 359 2 812 7060 **Canary Islands, Spain** Adolfo Suanzes S.A. Tel: 34 928 483050 **Cayman Islands** H.H. McTaggart & Son Ltd Tel: 345 949 7601 **Chile** Sparta Deportes Limitada Tel: 56 2 560 4214 **Colombia** Bike House Tel: 574 262 3223 **Costa Rica** Motos Pazos Tel: 506 2 291 1667 **Croatia** Rog Joma Tel: 385 1 2304 331 **Curacao, NA** Vista Bike N.V. Tel: 5999 465 9577 **Cyprus** Goodtones Ltd. Tel: 357 22 35 6673 **Czech Republic** Bretton Ltd Tel: 420 2 679 1 2679 **Dominican Republic** Rpoueriet & Cia.C. Por A Tel: 809 535 2152 **Ecuador** My Bike Tel: 593 22 463 503 **El Salvador** Mayor, S.A. DE C.V. Tel: 503 241 0410 **Estonia** Rademar Tel: 372 651 2910 **Fiji** Stinger Bicycles Limited Tel: 679 6283 771 **Finland** Oy Duell Bike Center Ab Tel: 358 6 322 7500 **French Polynesia** Tahiti Sport - Yet Sing Tel: 689 425 352 **Greece** Active Zone Network Tel: 30 210 9612929 **Grenada** Rhett Dopwell Tel: 473 440 5473 **Guam** MTB Outfitters Tel: 671 477 2453 **Guatemala** Novasport Tel: 502 24 74 26 89 **Honduras** Comercial La Paz Tel: 504 238 5027 **Hong Kong** Chung Yung Cycle Co. Tel: 852 2670 3639 **Hungary** Genomed Kereskedelmi KFT Tel: 36 1 331 3184 **Iceland** Orninn-Hjol ehf Tel: 354 588 9890 **India** Firefox Bikes Pvt. Ltd. Tel: 91 120 4357301 **Indonesia** Trekology Bikes 3 Pte Ltd Tel: 65 62754675 **Ireland** Centro Limited Tel: 353 1 456 7516 **Israel** Cycle Trading Company Ltd Tel: 972 9 9513 010 **Italy** Comar Italia SRL Tel: 39 035 302 502 **Kazakhstan** Intelli Sports Ltd. Tel: 7 727 2935870 **Kenya** Sustainable Ecosystems Ltd. Tel: 254 733 745518 **Korea** Spo-World Tel: 82 2 3444 9394 **Kuwait** Extreme Sports Co., L.L.C. Tel: 965 5755898 **Latvia** Velosports SIA Tel: 371 729 3517 **Lebanon** Blue Mountain Sari Tel: 961 9 637144 **Lithuania** Egmina UAB Tel: 370 232 5 3080 **Macedonia** Crossmak Dooel Tel: 389 47232068 **Malaysia** Trekology Bikes 3 Pte Ltd Tel: 65 62754675 **Malta** Magri Cycles & Spares Tel: 356 21 414399 **Mexico** Power Distribution SA de CV Tel: 52 81 8478 4560 **Nevis** Wheel World Cycle Shop Tel: 869 469 9682 **New Caledonia** Royal Motors SA Tel: 687 28 59 12 **New Zealand** Cycle Sport NZ Ltd Tel: 64 6 348 8029 **Norway** Foss Sykler AS Tel: 47 22 38 62 00 Fax: 47 22 38 62 10 **Panama** Motorsports Panama S.A. Tel: 507 236 0852 Fax: 507 236 6140 **Paraguay** Enerbike S.A. Tel: 595 21 610652 **Peru** Best Bikes & Fitness Tel: 51 1 411 4411 **Philippines** 3T Techno Turbo Trading Tel: 632 951 4457 **Poland** S.S.C. Artykuly Sportowe SP.ZO.O Tel: 48 71 3431539 **Portugal** Bicimax Artigos Desportivos LDA Tel: 351 244 553 276 **Puerto Rico** OTP Corp. Tel: 787 649 0450 **Qatar** Skate Shack Tel: 974 4692532 **Romania** S.C. Surmont Sport S.R.L. Tel: 407 225 44360 **Russia** Sportfex Tel: 7 926 206 43 56 **St. Kitts** Free Wheelers Tel: 869 466 3912 **St. Maarten, NA** Tri-Sport N.V. Tel: 59954 43462 **St. Vincent** Sailor's Cycle Centre Tel: 784 457 1712 **Saudi Arabia** Skate Shack Tel: 973 17 697176 **Senegal** Bomthi Sports Tel: 221 822 55 67 **Serbia** Idako D.O.O. Tel: 381 21 400 606 **Singapore** Trekology Bikes 3 Pte Ltd Tel: 65 62754675 **Slovakia** KCK Cyklosport Mode S.R.O. Tel: 421 862 549 2200 **Slovenia** Bess-Pro Market Tel: 386 61 274 135 **South Africa** Just Fun Sports Tel: 27 11 405 3300 **Sweden** Motorfirman Holger Duells AB Tel: 46 31 72 76 300 **Tahiti** Tahiti Sport - Yet Sing Tel: 689 425 352 **Taiwan** Speed High Co. Ltd. Tel: 886 2 27252035 **Tanzania** Adventure Sport & Leisure Tel: 255 27 2509706 **Thailand** Probike Co., Ltd. Tel: 662 254 1077 **Tortola, BVI** Last Stop Sports Center Ltd. Tel: 284 494 0564 **Trinidad** Geronimo's Cycles Tel: 868 622 2453 **Turkey** Alatin Bisiklet Tel: 90 212 244 47 15 **Ukraine** Velolux Company Tel: 380 443 325090 **United Arab Emirates** Direct Trading Est. Tel: 971 4 33 288 01 **U.S.V.I.** Associates of V.I. Athletes Inc Tel: 340 719 6749 **Uruguay** Bilper S.A. Tel: 298 2 708 86 31 **Uruguay** Ricolur S.A. Tel: 598 2 708 2498 **Venezuela** Bike Pro Com C.A. Tel: 58 212 991 4744 **Vietnam** Starbikes Co., Ltd. Tel: 84 4 2130302

WE PRINT OUR CATALOGS ON ONLY FOREST STEWARDSHIP COUNCIL (FSC) CERTIFIED PAPER

FSC certification ensures that the paper in our catalogs contains fiber from well-managed and responsibly-harvested forests. The goal is to shift the market to eliminate habitat destruction, water pollution, and displacement of indigenous peoples. This catalog meets FSC's strict environmental standards.



Creel,
Mexico