

The
BROOKS
BOOK

for 1919

The
BROOKS
Book (REGISTERED)

Being the thirty-
third Annual
Catalogue of

BROOKS

Saddles & Bags
for Cycles and
Motor-Cycles

J.B.BROOKS
and Company Ltd.
Gt. Charles St,
BIRMINGHAM

: ESTABLISHED 1866 :

Quality First

THIS is, as we have so frequently emphasized, the policy adopted in the manufacture of all productions associated with the name of Brooks. And we make no apology for again referring thereto, because that policy, dating as it does from the inception of the Brooks business in 1866, is to-day, and will be in the future steadfastly adhered to.

Its value has been strikingly revealed by the consistent demand for Brooks Cycle and Motor Cycle Saddles over so abnormal a period as the last four years, during which time our only regret has been that, owing to the concentration of nearly all our facilities on Government work, we have been unable to cope therewith as promptly and efficiently as usual.

But while "quality first" will ever remain the Brooks policy, price will always have due consideration, never however, at the expense of the Brooks reputation or the satisfaction of the buyer of any Brooks production. In compiling this cata-

logue we have endeavoured to give just the essential information to enable the reader to make a successful selection and to know exactly what he is buying. To purchasers of Brooks Saddles the information as to

Sizes, Weights, & Heights

will be especially useful, and they should further note—that the dimensions given represent merely the overall length and breadth, and are not necessarily indicative of the amount of seat room available—that weight may, in some instances, slightly vary in consequence of the differences in thickness of the leather used, and—

That the stated height, in each case, represents the distance from the centre of the saddle clip bolt to the top surface of the saddle—not the height of the saddle above the L pin, as this naturally will vary according to the position of the clip—whether up or down.

J. B. Brooks
& Company Ltd.

"Champion" Model Racing Saddle



There is no saddle in existence which offers greater comfort to the racing man than the Brooks 'Champion' Racing model, and nothing proves

that so conclusively as does its wide use by speed-men the world over. That extraordinary comfort, and the exceptional freedom of movement so essential to the racing man, result from the cambered or domed weight-carrying portion of the saddle (produced by the use of a curved cantle plate) in conjunction with the fine and narrow peak. As in all Brooks Saddles, solid copper rivets are employed, and these never become loose.

B 17 C Path Saddle "Champion" Model



Gentlemen's model only—Size 11in. x 7in.; Weight 1 lb. 8 oz.; Height 2½in.

The illustration above portrays the framing embodied in the Brooks B 17 C.

It has been expressly designed to fulfil the special requirements of the path rider, and, though lightness has been carefully borne in mind, strength has not been sacrificed.

B 17 C { Enamel 14/-
Nickel 15/6

B 10 & B 10 L Light Road Saddle

For Gentlemen—Size 1, Size 10½in. x 8½in.; Weight 1 lb. 11 oz.; Height 1½in. Size 2 — Size 11in. x 9½in.; Weight 2 lb. 3 oz.; Height 2in.

For Ladies—Size 1 only—Size 9½in. x 8½in.; Weight, 1 lb. 9 oz.; Height 2in.

There is no doubt that the Brooks B 10 is the most popular and world-famed light road saddle that has ever been made.

The wires of the Brooks four-wire framing spread outwardly at the rear, strengthen the frame against side thrust and evenly support the seat. Thus freedom from sagging and perfect ease are assured.



Size 1 Size 2
B 10 & { Enamel 14/6 Enamel 17/-
B 10 L { Nickel 17/-

B 18 & B 18 L Light Road Saddle



For Gentlemen—Size, 10½in. x 8in.; Weight, 1 lb. 10 oz.; Height, 2in.

For Ladies—Size 9½ x 8in. Weight, 1 lb. 7 oz.; Height, 2in.

The Brooks B 18 is an exceedingly comfortable saddle, and while being light and simple in construction, it is remarkably strong throughout.

The Brooks 4-wire framing is embodied, and the materials have been specially and carefully selected.

The Ladies' model (B 18 L) is of similar construction.

B 18 & { Enamel 11/6
B 18 L { Nickel 13/-

B 32 Light Road Saddle

Gentlemen's model only—Size, - 10½in. x 8½in.; Weight, 2 lb. 4 oz.; Height, 2½in.

The well-known Brooks 4-wire type of framing as fitted to the B 10, is embodied in this model, with, however, the addition of a front loop coil spring. All the firmness and neatness of the B 10 is retained, and the loop coil spring referred to ensures somewhat greater elasticity than in models that have not this feature.



B 32 { Enamel 19/-
Nickel 21/6

B 75 & B 75 L Light Road Saddle



For Gentlemen—Size 10½ in. × 8½ in.; Weight 2 lb. 6 oz.; Height 3½ in.

For Ladies—Size 9½ in. × 8½ in.; Weight 2 lb. 4 oz.; Height 3½ in.

In this model a perfectly shaped and correctly blocked leather top is mounted on three spiral springs — these latter, carried on a four-wire base, are made of plain wire and, without being too “springy,” yield to the weight of the rider and ensure perfect comfort.

B 75 L—Ladies’ model is on similar lines.

B 75 & B 75 L | Enamel 14/6
| Nickel 17/-

B 302 & B 302 L Light Road Saddle

For Gentlemen—Size 10½ in. × 8½ in.; Weight 2 lb. 7 oz.; Height 3½ in.

For Ladies—Size 9½ in. × 8½ in.; Weight 2 lb. 5 oz.; Height 3½ in.

A four-wire base is also embodied in this model, and the three coil springs (made of stranded wire) are mounted thereon.

B 302 is a thoroughly reliable saddle and moderately priced.

B 302 L is similar in construction.



B 302 & B 302 L | Enamel 16/-
| Nickel 18/6

B 85 & B 85 L Road Saddle (Patent)



For Gentlemen—Size 10½ in. × 8½ in.; Weight 2 lb. 11 oz.; Height 3½ in.

For Ladies—Size 9½ in. × 8½ in.; Weight 2 lb. 8 oz.; Height 3½ in.

This model is graceful in design and exceptionally comfortable in use. The superfine leather top is carefully blocked to shape and the Brooks stranded-wire spiral springs, which are embodied, are carried on a six-wire bracket.

B 85 L is similarly designed.

B 85 & B 85 L | Enamel 18/-
| Nickel 21/-

B 95 Road Saddle

Gentlemen’s Model only—Size 10½ in. × 8½ in.; Weight 2 lb. 11 oz.; Height 3½ in.

The leather top of the B 95, being carefully blocked, will retain its shape under long and severe wear—this top is carried by a front coil spring and two spiral springs at the rear—consequently the saddle yields to the weight of the rider along its entire length and ensures maximum comfort.



B 95 | Enamel 17/6
| Nickel 20/-

B 28 Road Saddle



Gentlemen's Model only—Size 10½ in. x 8½ in.; Weight 2 lb. 10 oz.; Height 2½ in.

A feature of this model is the Brooks rubber buffers which are used in conjunction with the rear springing arrangement.

These, with the front loop coil spring, ensure real comfort to the rider, and the tension screw being readily accessible, makes adjustment a simple matter.

B 28 { Enamel 20/-
Nickel 23/6

"The Release" Hammock Saddle

Gentlemen's Model only—Size 11½ in. x 9 in.; Weight 3 lb. 6 oz.; Height 4 in.

The construction of this saddle differs from that of any of our other models—it is of the Hammock type, well sprung and most comfortable.

Extra long springs are extended well to the rear, and these ensure an exceptionally smooth action.

The tension can be adjusted quite easily and quickly.

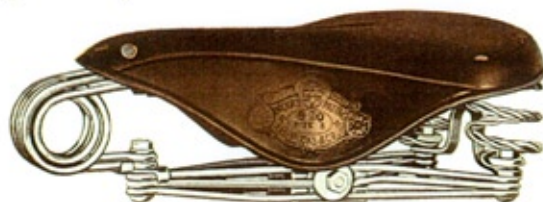


Release Hammock { Enamel 25/-
Nickel 29/6
Without Tool Bag.)

{ Enamel 32/9
Nickel 37/3

Complete with Tool Bag, as B2769, shown on page 10.

B 90 Road Saddle (Patent)



Gentlemen's Model only—Size 1, Size 10½ in. x 8½ in.; Weight 3 lb. 0 oz.; Height 3½ in. Size 2—Size 11½ in. x 9 in.; Weight 3 lb. 4 oz.; Height 3½ in. Size 3—Size 12 in. x 9½ in.; Weight 4 lb. 0 oz.; Height 3½ in.

The Brooks B 90 is decidedly one of the most popular road saddles that has ever been made.

It is extremely comfortable, durable and handsome, is fitted with Brooks stranded-wire spiral springs, laminar front spring and patent six-wire bracket.

Size 1.

B 90 { Enamel 20/-
Nickel 24/-

Size 2.

{ Enamel 21/6
Nickel 25/6

Size 3.

{ Enamel 25/-
Nickel 29/6

B 130 Cycle Saddle

Gentlemen's Model only—plain top; Size 11½ in. x 9 in.; Weight 4 lb. 7 oz.; Height 3 in.

B 130 is fitted with the universally popular Brooks Compound Springs, the merits of which are dealt with on page 12. These springs ensure comfort to a degree unattainable with any other system and wholly and effectively absorb all vibration resulting from the irregularities of rough road surfaces.



B 130 { Enamel 25/6
Nickel 31/-

B 2501 Tool Bag



Size: $6\frac{1}{2}$ in. \times $3\frac{1}{2}$ in. \times $1\frac{1}{4}$ in.
A soft gusseted bag, well made throughout from superior leather.

B 2501 - - 2/9

B 7519 Tool Bag



Size: 6 in. \times 3 in. \times $1\frac{1}{2}$ in.
Stout leather is the material used in this bag, which is fitted with ring lock, as illustrated.

B 7519 - - 3/3

B 2769 Tool Bag



Size: $6\frac{1}{4}$ in. \times $2\frac{1}{4}$ in. diam.
This bag is made to fit inside the rear springs of the "Release" Saddle, and has a full-length pull-out inside case.

B 2769 - - 7/9

B 2763 Challenge Tool Bag



Size: 7 in. \times 3 in. \times 2 in.

A really excellent bag with exceptional features. The strap for closing the bag encircles the tools and prevents rattling, and the buckles of the attaching straps are inside the bag, this making wrongful removal difficult.

B 2763 - - 3/6

B 7599 Tool Bag



Size: 6 in. \times $3\frac{1}{2}$ in. \times $1\frac{1}{4}$ in.

B 7599 is well made of best quality leather, fitted with ring lock and celluloid address pocket in front.

B 7599 - - 4/3

B 7520 is a similar bag without address pocket.

B 7520 - - 4/-

Cycle Frame Bag



B 2038 is an excellent frame bag, being roomy and perfectly weather-proof.

It is made of the best waterproof canvas, brown tan, or tweed, and cloth lined—it is stiffened and fitted with rubber buffers to keep it clear of the top frame tube, thus avoiding the fouling of gear levers, wires, etc.

B 2036 is very similar, in both size and shape, to the pattern illustrated and described above. The material is superior waterproof canvas, three straps are fitted instead of lock, and the sides only are stiffened, the gussets being collapsible. Lined cambric throughout.

B 2034 is a somewhat similar bag, but two straps and ring lock are fitted instead of three straps, and the material of which it is made is a cheaper quality canvas.

B 2038, with lock as illustrated - 27/-

B 2036, with three straps instead of lock - 22/-

B 2034, with two straps and ring lock - 17/-

The Brooks World-famed Compound Spring



The inner and outer coils of the Brooks Compound Spring act in unison in the absorption of road shocks, and, due to this fact, is that feeling of unlimited elasticity which every rider of a Brooks Motor Cycle Saddle so much appreciates.

"Bounce" and the gradually-lessening oscillations which are the cause of discomfort in the

case of the simple spring, are quite foreign to the Brooks, the reason being that the tendency of the inner and outer springs to bounce and joggle the rider each at its own and totally different speeds is entirely nullified by the counter-action of one against the other.

In short there is no doubt that the Brooks Compound Spring constitutes the ideal system of springing and results in an unlimited resiliency, while reducing any shaking or jolting of the rider to an absolute minimum.



B 400 Patent Motor Cycle Saddle



Size, 12 1/2 in. wide x 12 1/2 in. front to back. Weight, 9 1/2 lb. Height (to top surface of depression), 4 1/2 in. Clearance between rear springs, 8 in.

The seat portion of the saddle illustrated is carried on substantial parallel links—these latter ensure a perfectly vertical movement of the seat, and their ample bearing surface reduces wear to the minimum.

The Brooks Compound Springs, as described on page 12, are fitted, and these, and the scientifically moulded and padded seat, are responsible for its extraordinary comfort-giving qualities.

When ordering, the rider's weight should be stated, as the model is made in several strengths.

B 400 Enamel finish only - - - **52/6**

B 500 Patent Motor Cycle Saddle

Size 14 in. wide x 13 in. front to back. Weight 10 lb. 10 oz. Height (to top surface of depression) 4 1/2 in. Clearance between rear springs 8 in.

This model has been described as "the Pullman of saddles," and no name could give a better suggestion of its comfort and luxury than is implied by that phrase.

The springing and suspension are similar to that of the B 400—it is however somewhat larger than that model and, because of its extreme comfort and durability, is exceedingly popular among Motor Cyclists generally.

It is marketed in several strengths, and the rider should state his weight when ordering.



B 500 Enamel finish only - - - **65/-**

B 175
Patent
Motor Cycle
Saddle (New Model)



Size 12in. wide x 13in. front to back. Weight 8 lb. 12oz. Height (to top surface of depression) 4in. Clearance between rear springs 8in.

A model designed to meet the popular demand for a well-sprung Saddle, completely insulating the rider from road shocks.

It is built up on the well-known principle of our B 170, but has our compound Coil Springs, and hinged lever front, which insulates the peak of the Saddle, without materially increasing the height of the seat from the ground—an important point to riders under the average height. The legs are also hinged at the point indicated by arrow "A" which allows freedom of movement to the Spring underneath the peak, indicated by arrow "B."



In addition, the Brooks Compound Springs are increased in size, giving a softer and more resilient action to the saddle.

B 175 Enamel finish only **45/-**

B 150
Patent Light-Weight
Motor Cycle
Saddle

Size 10in. wide x 12in. front to back. Weight 6 lb. Height (to top surface of depression) 3in. Clearance between springs 6in.

This is an ideal saddle for the light-weight Motor Cycle, it is perfectly shaped, comfortably padded and, for its special purpose, not equalled by any other saddle. As B170, but smaller.

B 150 Enamel finish only **35/-**

B 170
Patent Motor
Cycle Saddle

Size 12in. wide x 13in. front to back. Weight 8 lb. Height (to top surface of depression) 3in. Clearance between rear springs 8in.

A similar model to B 150 but, as will be noted, of somewhat larger dimensions.

B 170 Enamel finish only **40/-**

B 220
Patent Motor
Cycle Saddle



Size 12in. wide x 13in. front to back. Weight 7 lb. 3oz. Height (to top surface of depression) 3in.

This is a Saddle that has been designed especially to meet the demands of Riders who require a firm and low seat for speed work; it is also eminently suitable for Spring Frame Machines.

The Laminated Springs are now anchored in the centre instead of at one end as formerly, an arrangement giving free movement to either end of the spring, and which has been proved superior in actual test and practice.

B 220 Enamel finish only **45/-**



B 3150
Motor Cycle
Back Rest

Size of Pad 12in. x 3in. Weight 1 lb. 7oz. Height from top of seat to top of back rest 7in.

A comfortable back-rest, which is made for easy attachment to Brooks Motor Cycle Saddles.

B 3150 - **15/6**

Enamel finish only.

The above models are made in several strengths, and rider's weight should be stated when ordering.

B 1038

Patent Adjustable Motor Cycle Back Rest



Size of Pad 12in. x 3½in. ; weight 2 lb. 6 oz. ; height adjustable from 5½in. to 7in.

The Brooks Patent Adjustable Back-rest illustrated here in two positions will be found to give great relief to those riders who are in the habit of covering long distances.

It is a particularly convenient fitting, and simplicity itself.

A bolt running across below the rear of the saddle enables it to be locked in position and, to drop the rest, this bolt may be quite easily pulled or pushed from either side.

The pad can be readily adjusted to any height, from 5½ in. to 7 in.

The following details should be given when ordering: number of the saddle to which it is to be fitted, and the distance apart (centre to centre) of the bolts in rear of cantle plate.



For B 400, B 175, B 170 and B 150 Saddles.

B 1038 Enamel finish only **20/-**

B 7978

Motor Cycle Pannier Tool Bag



Size 8½in. x 4in. x 4½in.

This is a neatly designed and strongly constructed tool bag. The top, bottom and ends are of steel, front being of leather. The Brooks patent lock is fitted, and attachment is to carrier by two steel clips.

B 7978 - - 12/-

B 7979

Size 7½in. x 4in. x 4in.

Similar to the pattern illustrated above, but smaller.

B 7979 - - 11/3

B 7992

Motor Cycle Pannier Tool Bag

Size 7½in. x 4in. x 4in.

Like the two models above, the top, bottom and ends of B 7992 are made of steel.

The front is of stout grained leather and secured by two straps as shown in the illustration below. Attachment is to carrier, and two steel clips are supplied for this purpose.



B 7992 - - 9/6

B 3147
Motor Cycle
Tool
Roll-up



Size 27½ in. x 7½ in.

This is a well-made tool roll, the material being morocco grain basil with pocket and strap.

B 3147 - - 7/9



B 6510
Motor
Cyclists' Belt

The Belt here illustrated will be found most convenient for competition riders, as it enables them to carry small spares in a position readily accessible.

It is made of selected leather and perfectly finished.

Can also be supplied without pouches.

B 6510

Belt only, 38/44 in., 2/3

Belt only, 45/52 in., 2/6

Belt, 38/44 in. and Pouches - - 8/6

Belt, 45/52 in. and pouches - - 8/9

Motor Cycle
Tool
Roll-up
B 7584

B 7584 is of stout canvas and leather bound. A pocket on end is provided and the securing strap passes through steel loops.

Size 19½ in. x 7½ in.

B 7584 - - 6/-

B 944
Motor Cycle
Carrier Bag



Size 16½ in. x 10½ in. x 6½ in. outside measurements.

This bag is attached to the carrier by means of four steel clips. It is splendidly made of finest leatheroid on special three-ply board, fitted with the Brooks patent lock and two straps, and has special dust-excluding arrangement.

B 944

33/-

B 2782
Motor Cycle
Carrier Bag

(Regd. No. 538203).

Size 16½ in. x 10½ in. x 6½ in. outside measurements.

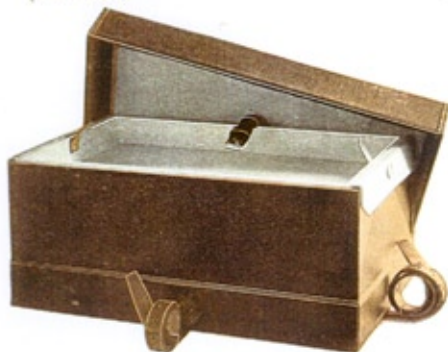
The feature of this bag is the removable inner case, which, with its contents, is fully protected from the elements.

The material of which it is made is finest leatheroid on special three-ply board, and, as in the case of B944, it is fitted with Brooks patent lock and two straps, and has special arrangement for the exclusion of dust.



B 2782 - 50/-

B 1795
Motor Cycle
Collapsible
Carrier Bag
 (Patented)



Outside measurements, when extended, 16in. x 10in. x 7in.
 Outside measurements, when collapsed, 16in. x 10in. x 2in.

This is an extremely handy and most useful collapsible bag. It is made of the finest leatheroid on three-ply board, and absolutely weather-proof.

Made for attachment to the carrier, in which position it is secured by means of four steel clips.

The fact that this bag, when in use, provides a roomy receptacle and, when not required, can be collapsed to a mere depth of two inches, is a feature of especial merit.

At a slight extra cost a tray can be provided as shown.

B 1795 - - 35/-
 Tray, extra - 7/6

B 539
Repair
Outfit Case



Size, 4in. x 4in. x 1in.

A handy attachment for carrying the repair outfit, made of best leatheroid on three-ply wood, attached to carrier stay by steel clip.

B 539 - - 6/6

B 961
Motor Cycle
Carbide
Carrier

(Regd. No. 549107).



Capacity, 1 lb. Size, 2in. diameter, 4in. deep, 4in. over clip.

Strongly made of best leatheroid and absolutely weatherproof. Attached to frame or side-car by wing-nut clip.

B 961 - - 4/3

B 7265
Spare Tube
Case



Size, 9in. x 2in. x 3in.

Made of leather, lined baize, and fitted with Brooks patent lock and clips for securing in position.

B 7265 - - 14/9

B 5674/1
Motor Cycle
Plug Case



Size, 2in. x 1in. x 3in.

A strong and thoroughly well-made leather case, fitted inside with wood base, which is tapped to take two motor cycle plugs, thus preventing damage to the points.

B 5674/1 - - 4/3

B 963 Motor Cycle Spare Belt & Tube Case



Size 9½ in. diameter x 3½ in. deep.

Of finest leatheroid on three-ply board. Spare belt is carried in the outer and spare tube in the inner compartment; a leather cap for the valve, and felt pads top and bottom being provided for the tube space.

For further protection wrap the tube in a cloth dusted with French chalk, and, if loose, inflate sufficiently to make a firm fit.

B 963 - 22/6

B 2889 & B 2890 Motor Cycle Belt Cases

Finest leatheroid and best quality leather respectively

Size 8½ in. diameter x 2½ in. deep.

B 2889 - 14/6
B 2890 - 20/-

B 535 & B 548 Motor Cycle Spare Tube Boxes



Size. 5 in. diameter x 4 in. deep.

B 535 is made of finest leather—the lid and bottom are lined felt, and leather cap is provided for the valve of spare tube attached by steel clip provided.

B 548 is similar, but of best leatheroid on three-ply board.

B 535 - 11/6
B 548 - 8/9

B 2658 & B 2657 Brooks Patent Spring Leggings Full Length Pattern



Showing ease of removal.

In position.

Size 1—11½ in.—12½ in.; Size 2, 13 in.—14 in.; Size 3—14½ in.—16 in.; Size 4—16 in.—17½ in.

The Brooks Spring Leggings are held securely in place by spring clips below the knee and above

the ankle—these clips are anatomically shaped in order to avoid local pressure, and can be worn indefinitely without discomfort.

When ordering, the measurement (not too tight) to be given is round the calf and outside the trousers.

B 2658, good quality black rubber-proofed cloth, per pair - 30/-

B 2657, finest khaki waterproof canvas per pair - 28/-

B 2049 & B 2050

Brooks Patent Spring Leggings Short Pattern



Showing ease of removal.

In position.

Size 1—11½ in.—12½ in.; Size 2—
13 in.—14 in.; Size 3—14½ in.—
16 in.; Size 4—16 in.—17½ in.

Like the full length pattern, B 2049 and B 2050 are held firmly in position by means of anatomically-shaped springs, which are placed below the knee and above the ankle.

The Brooks Spring Leggings can be quickly fitted and removed.

When ordering, the measurement (not too tight) should be stated—that is, round the calf and outside the trousers.

B 2049, good quality
black rubber-proofed
cloth, per pair - - **22/-**

B 2050, finest khaki
waterproof canvas,
per pair - **19/-**

