



HANDMADE QUALITY SADDLES

BROOKS

ENGLAND



BROOKS BOOK FOR CYCLISTS

2007

We have pleasure in bringing to your notice our

2007 Brooks Book for Cyclists

containing useful information about Leather Saddles, and the choosing and using of them in a proper manner. In venturing upon this publication it has been our desire to more than thoroughly acquaint the rider with that attribute to the machine which, if comfort and enjoyment are to be found in riding, is one of the most important, and yet often one of the most neglected. Brooks Saddles have a worldwide reputation and are acknowledged to stand pre-eminent, and neither pains nor expense will be spared, in order to retain this enviable position.

Brooks England Ltd.

Contents

Brooks Saddles	2
The Selection of a Saddle	4
Classic	6
Road - MTB	8
ATB - Trekking	14
City - Touring	20
Aged	26
Collection	32
The Adjustment of a Saddle	39
Maintenance and Repairs	41
Bags Etc.	42
Tool Bags	44
Holdalls	48
Leather Grips	50
Leather Bar Tape	52
Mud Flap	54
Wheel Kit	55
Brooks Jerseys	56
L'Eroica	59
Our Website	63
Yesteryear Catalogues Collection	66

Brooks Saddles

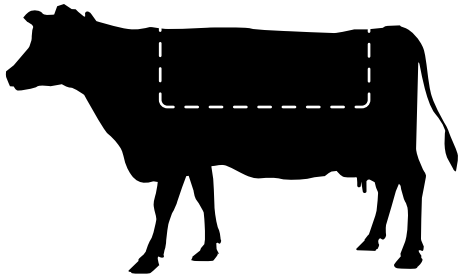
The undoubted supremacy of Brooks Saddles is largely due to their irreproachable quality in every detail.

The leather is absolutely of the best quality obtainable and is thoroughly adapted to its purpose. The attention subsequently bestowed upon its manipulation, enables it not only to take but to retain the shapeliness and form so essential to comfort. This retention of shape, and even improvement after a few months use (period known as break-in time), is the crucial test of a leather top, and is one of the chief characteristics of Brooks Saddles. Remember, a broken-in Brooks is the only saddle whose shape becomes truly yours.

Another, and even more important feature peculiar to leather, is that of porosity. Invisible pores in the animal hides provide natural ventilation. Brooks saddles are always cool to ride, thereby providing greater levels of comfort, even on the longest rides, on the warmest days.

The springs and framings are still mostly made at the Company's own works in England and are scientifically designed to obtain maximum elasticity and comfort, combined with strength and durability.

The workmanship and finish of Brooks Saddles have never been equalled. Every process and detail receives careful attention, whilst the completed saddle imparts additional tone to any bicycle.



Brooks Saddles

*A Brooks Saddle is strong and durable.
It takes and retains your own shapeliness.*

The Selection of a Saddle

At Brooks we recognise that to choose a saddle which is suited to both the rider and his machine, and also the class of road and terrain he intends to ride upon, is a matter worthy of more consideration than is normally devoted to this question.

Whilst endeavouring to give advice upon the choice of a saddle, it is necessary to bear in mind that riders vary considerably, not only in their requirements, but also in their preferences, which are frequently quite different from the type of saddle which would really suit them best. There are many riders to whom we should unhesitatingly recommend a roomy saddle, with comfortable springs; but frequently these cannot be persuaded to ride anything other than a light small saddle, the neat appearance of which is the only cause of their preference.

Our catalogue is structured to make the saddle selection easier. The following pages feature 3 lines of products to address the needs of different types of cyclists.



Classic
for the serious cyclist



Aged
for an easier start



Collection
for our true fan

Classic

Our Classic Saddles, traditionally manufactured according to centuries old standards, are addressed to cyclists used to riding very often or over long distances. The firm leather used on these saddles can be broken-in easily over time and distance, forming perfectly to the anatomy of the rider.



*Classic
for the serious cyclist*



Road - MTB



ATB - Trekking



City - Touring



Road - MTB

Exercising this pursuit the participant's weight tends to be transferred onto the legs, and to some extent onto the forearms and wrists, with the pressure on the seat being alleviated to a corresponding amount.

Leaning forward, and on occasions not actually utilising the seat, the rider adopts such position for increased speed and in some instances streamlining.



SWALLOW CLASSIC

The Swallow Classic reproduces the timeless design of the daddy of modern racing saddles, first in production in 1937.

Top: Black, Honey, Brown **Rails-Weight:** Titanium 360gr
Width: 153mm **Length:** 287mm



TEAM PRO CHROME or COPPER

Our classic racing saddle for men.

Top: Black, Honey **Rails - Weight:** Chrome Plated or Copper Plated 550gr
Width: 160mm **Length:** 260mm



TEAM PRO TITANIUM

Our light classic racing saddle for men with titanium rails and bag loops.

Top: Black, Honey **Rails - Weight:** Titanium 395gr
Width: 160mm **Length:** 260mm



TEAM PRO S COPPER or CHROME

Lady's version of our classic racing saddle.

Top: Black, Honey **Rails - Weight:** Copper Plated or Chrome Plated 500gr
Width: 177mm **Length:** 245mm



B17 NARROW

Narrowed version of the B17 for more sportive cyclists.

Top: Black, Brown **Rails - Weight:** Black Steel 530gr
Width: 155mm **Length:** 280mm



SWIFT

A first class titanium framed gent's racing saddle with skived sides.

Top: Black, Honey, Brown, Green **Rails - Weight:** Titanium 370gr
Width: 152mm **Length:** 280mm



FINESSE

The first class titanium framed lady's racing saddle.

Top: Black, Honey, Brown, Green **Rails - Weight:** Titanium 350gr
Width: 170mm **Length:** 238mm



ATB - Trekking

A pursuit whereby the correct transfer of weight is critical for the rider to maintain balance on his machine whilst traversing and negotiating varying degrees of incline, decline and terrain.

Multiple seat positions will be adopted during such activity and again the rider may leave the seat when increased speed or greater control is desired.



B17 TITANIUM

The ever popular model with titanium frame and skived sides.

Top: Black, Honey, Brown, Green **Rails - Weight:** Titanium 410gr
Width: 170mm **Length:** 280mm



B17 SPECIAL

Traditional version of our best seller with copper rails, large hand-hammered rivets, and chamfrd sides.

Top: Black, Honey, Green **Rails - Weight:** Copper Plated 540gr
Width: 170mm **Length:** 280mm

**B17 STANDARD**

Our flagship model, ideal for long distance trekking and ATB use.

Top: Black, Honey **Rails - Weight:** Black Steel 525gr
Width: 170mm **Length:** 280mm

**B17 STANDARD S**

Lady's version of the B17 Standard, one of the most comfortable trekking saddles for women.

Top: Black, Honey **Rails - Weight:** Black Steel 455gr
Width: 177mm **Length:** 245mm

**FLYER**

Classically sprung model for long distance and ATB use.

Top: Black, Honey **Rails - Weight:** Black Steel 850gr
Width: 170mm **Length:** 280mm

**FLYER S**

Womens' version of the Flyer.

Top: Black, Honey **Rails - Weight:** Black Steel 800gr
Width: 177mm **Length:** 245mm



FLYER SPECIAL

Luxury version of the Flyer with hand-hammered rivets and skived sides.

Top: Black, Honey, Brown **Rails - Weight:** Black Steel 870gr
Width: 170mm **Length:** 280mm



FLYER S SPECIAL

Luxury version of the Flyer S with hand-hammered rivets and skived sides.

Top: Black, Honey, Brown **Rails - Weight:** Black Steel 820gr
Width: 177mm **Length:** 245mm



City - Touring

An altogether more leisurely pursuit, the rider adopting an upright position whilst appreciating the surroundings. With the great majority of the weight being supported by the rear quarter, such stance relieves pressure on the forearms but means that the posterior accepts up to 90% of the rider's weight. In such circumstances the more discerning rider will utilise springs for maximum shock absorption.



B68

Our all-rounder for daily city or touring use with single rails for adjustment on suspended sit posts.

Top: Black, Honey, Brown **Rails - Weight:** Black Steel 560gr
Width: 210mm **Length:** 260mm



B68 S

Ladies version of our all-rounder with single rails for adjustment on suspended sit posts.

Top: Black, Honey, Brown **Rails - Weight:** Black Steel 530gr
Width: 210mm **Length:** 235mm

**B66**

The ideal all-rounder for daily city or touring use. Classically sprung for supreme comfort.

Top: Black, Honey, Brown **Rails - Weight:** Black Steel 1045gr
Width: 210mm **Length:** 260mm

**B66 S**

Lady's version of the B66, perfect for daily use and touring.

Top: Black, Honey, Brown **Rails - Weight:** Black Steel 1045gr
Width: 210mm **Length:** 235mm

**B67**

One wire version of the B66 for use with micro-adjust seat pillars.

Top: Black, Honey, Brown **Rails - Weight:** Black Steel 850gr,
Brown 850gr, Black Steel 850gr
Width: 210mm **Length:** 260mm

**B67 S**

Lady's version of the B67 for use with micro-adjust seat pillars.

Top: Black, Honey, Brown **Rails - Weight:** Black Steel 850gr
Width: 210mm **Length:** 235mm

**B72**

A light weight touring saddle with unique loop springs incorporated within the saddle.

Top: Black, Brown **Rails - Weight:** Black Steel 690gr
Width: 210mm **Length:** 260mm

**B73**

The only model still featuring a front spring for maximum suspension, as patented by J.B. Brooks himself in the 1890s.

Top: Black, Honey **Rails - Weight:** Chrome Plated 1100gr
Width: 210mm **Length:** 260mm

**B135**

Our only model with double springs for supreme suspension.

Top: Black, Honey **Rails - Weight:** Chrome Steel 1650gr
Width: 210mm **Length:** 290mm

**B33**

The only model featuring stranded rear coil springs and a front loop. Ideal for traditional bicycles.

Top: Black, Honey **Rails - Weight:** Chrome Plated 1530gr
Width: 235mm **Length:** 292mm



Aged
for an easier start

Aged

The Aged Saddles are meant for the urban commuter or recreational cyclist, a person who rides for transportation or fun for shorter distances. Due to the limited use, this cyclist needs a saddle with a more supple leather enabling a shorter break-in time. Brooks Aged saddles are easier to break-in because the leather has specially formulated waxes and balms skillfully worked into the hide. This results in a more comfortable ride, from day one.





B17 AGED

Our most versatile sportive model with Aged leather top.

Top: Dark Tan **Rails - Weight:** Black Steel 525gr
Width: 170mm **Length:** 280mm



B17 S AGED

Our most versatile ladies sportive model with Aged leather top.

Top: Dark Tan **Rails - Weight:** Black Steel 455gr
Width: 177mm **Length:** 245mm

**FLYER AGED**

Gent's trekking saddle with Aged leather top.

Top: Dark Tan Rails - Weight: Black Steel 850gr
Width: 170mm Length: 280mm

**B67 AGED**

Gent's city and touring saddle with Aged leather top.

Top: Dark Tan Rails - Weight: Black Steel 850gr
Width: 210mm Length: 260mm

**FLYER S AGED**

Lady's trekking saddle with Aged leather top.

Top: Dark Tan Rails - Weight: Black Steel 800gr
Width: 177mm Length: 245mm

**B67 S AGED**

Lady's city and touring saddle with Aged leather top.

Top: Dark Tan Rails - Weight: Black Steel 850gr
Width: 210mm Length: 235mm

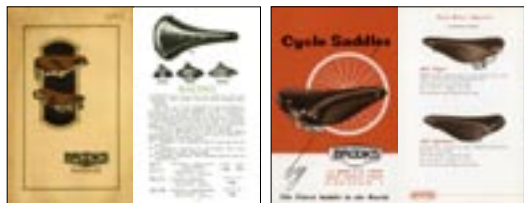
Collection

The purpose of the Collection section is to document the special products which have been made in the last few years as reproductions of yesteryear products or as current models with a special finish. Here you may find products which are sold out, but which might be still found in a shop or from collectors over the internet.



*Collection
for our true fan*





*In the 1925 catalogue Brooks introduces the Sprinter.
The 1957 catalogue is one of the last featuring this model.*



Patent Number 20.144 A.D. 1898

*(original drawing from the patent book
of J.B. Brooks and Company Ltd.)*



SPRINTER

Built for mile and half mile events, the Sprinter was the choice of track riders through the 1950's and early 1960's. Now available as a limited edition of 1925 pieces.

Top: Brown **Rails - Weight:** Titanium 435gr
Width: 133mm **Length:** 274mm



B18 LADY

Our B18 Lady is a reproduction of one of the saddles with ornamentally embossed top. The production process was patented by J.b. Brooks in 1898.

Top: Brown **Rails - Weight:** Chrome Steel 700gr
Width: 210mm **Length:** 265mm



SWALLOW LIMITED EDITION '07

2007 Limited Edition of 999 numbered pieces, carefully stitched by hand. A new opportunity for collectors who could not get one of our previous Limited Edition Swallows.

Top: Black **Rails - Weight:** Titanium 370gr
Width: 153mm **Length:** 287mm



SWALLOW LIMITED EDITION '05

Limited Edition of 999 numbered pieces, carefully stitched by hand, in time honoured fashion. A real collector's item, sold out in 2005.

Top: Antique Brown **Rails - Weight:** Titanium 370gr
Width: 153mm **Length:** 287mm



Saddle Position

Saddle position should be such that the leg need never be straightened when pedalling.

The Adjustment of a Saddle

The rider's comfort will depend to a much greater extent than is generally supposed, upon the correct adjustment of the saddle upon the machine.

The great thing to bear in mind is that, to obtain comfort and immunity from injurious pressure the weight must be carried by the broad part of the saddle. The peak should not carry weight; it is only intended to ensure a steady and secure seat, which a peakless saddle would not do.

By attention to the following hints the correct position should be readily attained. The saddle should be placed:

1. Just sufficiently behind the crank-axle to allow the rider to sit upon the broad part of the saddle, while riding, without being pulled forward on to the peak by the ownward thrust of the leg.
2. Just low enough to enable the rider to reach the pedals comfortably all round, without even a suspicion of stretching after them.
3. With the peak positioned just high enough to prevent the rider from slipping forward.



Maintenance Kit

A maintenance kit is available through your local dealer.

Maintenance and Repairs

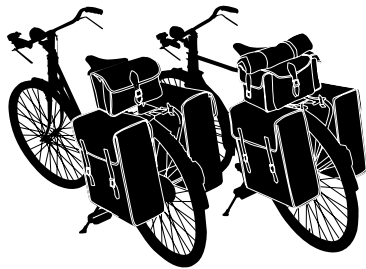
Each Brooks Saddle comes with a care leaflet. Maintaining your saddle, as described therein, will ensure that it becomes the most comfortable and durable saddle you could ever wish for. A maintenance kit is available through your local dealer.

Some breakages of BROOKS saddles can be repaired by your bicycle mechanic.

On the Brooks website you can find the updated Spare Parts List, the purpose of which is just to inform you whether the spare part you require is available or not. Not every failure can be repaired but if the leather top of your saddle is formed, and in good condition, chances are we can save you the cost of buying a new saddle or having to break in a new top.

For safety reasons Brooks needs to ensure that the repair is carried out by a bicycle mechanic. Should you need a spare part, make a note of the spare part number and ask your local mechanic to order it for you through one of our wholesalers listed on the Brooks website.





Bags Etc.

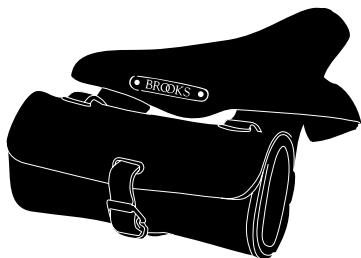
*Different Brooks bags and cycling accessories
are now available for your bike.*

Bags Etc.

In the 1890s, the founder of our company, John Boulton Brooks, having patented a number of innovations in saddles, began to develop other cycling accessories, starting with tool bags. Brooks range expanded until the 1960s, when the offer of products was much larger than nowadays.

Recently at Brooks we reproduced some of the most interesting designs, from the Challenge and D-Shaped tool bags to the larger Millbrook and Glenbrook holdalls. In the BROOKS tradition we also developed new products for the comfort of your hands: our new leather bar tape for sportive cyclists and our leather grips for those using a traditional handlebar.





Tool Bags

The first Challenge Tool Bag was first featured from Brooks England in 1899. It was heralded at the time for being undoubtedly the foremost bag in the market for quietness, appearance and quality.

Small wonder that this design has been widely copied ever since.

The Challenge Tool Bag is for fitment to the rear of a saddle bearing bag loops. It features buckles that whilst fastening the bag to the saddle, are located within the hold itself, thus ensuring greater levels of security and the strap that secures the unit encircles the tools it carries, to prevent them from rattling during transit.



CHALLENGE TOOL BAG

The Challenge Tool Bag is for fitment to the rear of a saddle bearing bag loops. It features buckles that whilst fastening the bag to the saddle, are located within the hold itself, thus ensuring greater levels of security and the strap that secures the unit encircles the tools it carries, to prevent them from rattling during transit.

Leather colours: Black, Brown, Honey, Dark Tan
Width: 180mm **Height:** 80mm **Depth:** 60mm



D-SHAPED

The D-Shaped Bag was featured in Brooks Catalogues as far back as 1910. This innovative design features a two piece construction which, whilst the outer sleeve remains permanently attached to the saddle, has an inner purse that may be removed so that its owner may retain it, thus securing its valuable contents. The purse is attached to the sleeve by a 'Sam Brown' fixing, preventing it from sliding out, even under extreme conditions.

Leather colours: Black, Brown, Honey, Dark Tan

Width: 170mm **Height:** 110mm **Depth:** 60mm



TOOL ROLL

Shown within the 1914 Brooks Book for Motor Cyclists, the Tool Roll is the most modern of the three designs made newly available.

Made of stout leather, the Tool Roll contains:

- 3 Tyre Levers with spoke locating groove
- Spanners (8/9, 10/11, 12/13, 15)
- Interchangable Screwdriver (phillips and flat nosed)
- Allen Keys (sizes 8/6, 5, 4, 3, 2 and 2.5)
- Spoke Wrench (dual size: 3.3 and 3.4 mm).

Leather colours: Black, Brown, Honey

Width: 180mm **Height:** 130mm **Depth:** 90mm



Holdalls

Millbrook and Glenbrook are original Brooks England Saddle Holdalls first produced in the 1950s.

Such designs were originally commissioned to cater for cyclists wishing to transport food, cameras, maps and handbooks and provided sturdy pockets for tools, repair outfits, oil cans and such like.

These sympathetically reproduced, most stylish of designs, are suitable for both the tourer and the collector, wishing to compliment his vintage ride.



GLENBROOK

The larger of our Holdalls.
Made of vinyl it features black leather trims and 2 side pockets.

Leather colours: Black
Vol. 9 l.



MILLBROOK

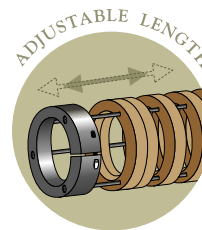
The smaller of our Holdalls.
Made of vinyl it features black leather trims.

Leather colours: Black
Vol. 6 l.



Leather Grips

Breathable, Shape to your hands, Adjustable length.



LEATHER GRIPS

In the BROOKS tradition, our grips are made of natural leather, the same long wearing leather used for our saddle tops. Each grip is made with a stack of leather washers, enabling it to be adjusted to the desired length.

Leather colours: Black, Brown, Honey, Dark Tan.



Leather Bar Tape

Natural, breathable, durable.



LEATHER BAR TAPE

In the BROOKS tradition, this bar tape is made of natural leather to make it the perfect complement to your BROOKS saddle.

The bar tape comes in a kit including:

- 2 strips of light, perforated leather bar tape,
- 2 natural cork and wood bar end plugs,
- 2 adhesive cloth strips.

Leather colours: Black, Brown, Honey



MUD FLAP



Inspired by the design of the 1937 mudguard flap, our new mud flap is made of the same leather used for Brooks Saddles. It is provided with 2 screw bolts to fix it on the mudguard.

Leather colours: Black, Honey, Brown



WHEEL KIT



This set of tools includes all you need to take care of your bicycle's wheels:

- 3 Tyre Levers made of chromium coated high quality carbon steel with spoke locating groove
- 1 Spoke Wrench made of titanium coated stainless steel (dual size: 3.3 and 3.4 mm).

Brooks Jerseys

Our first Brooks woollen jersey has been produced specifically for Team Brooks' participation in L'Eroica, and is available as a standard production item.

Our two new jerseys instead are limited editions. All Brooks jerseys are inspired by the original designs of the 1960's and 70's and feature embroidered logos, a metal zip and three buttoned rear pockets. They are manufactured in Italy using the finest quality wools.

Available in 5 sizes: S, M, L, XL, XXL



Available in 5 sizes: S, M, L, XL, XXL



Available in 5 sizes: S, M, L, XL, XXL



L'Eroica

As can be read in one of our old catalogues, Brooks saddles were once the choice of all participants in the Tour de France. Of course time and technology has moved on, but the atmosphere of that bygone era can still be experienced at L'Eroica, the world's most gruelling daily cycle tour.

At the end of each summer the village of Gaiole in Tuscany, Italy, plays host to a community of cyclists determined to keep the spirit of that era alive. They don period clothing and ride vintage bikes which, given the course, can only be described as truly heroic. A set of dirt road courses, ranging from the easy 40 km to the hardest 200 km tour, await the participants who ride L'Eroica.

Brooks England Ltd participates in this event, which is changing not only the way people enjoy cycling, but is also challenging professional cyclists. In fact, for the first time in years, during the 2005 Giro D'Italia, the racers climbed over a mountain on a dirt road for about 8 km. L'Eroica is more than reliving a bygone era of cycling, it is about bringing back the values of "heroism" to modern professional, enthusiast and recreational cycling.

Brooks England is proud to sponsor L'Eroica and supports the worthy cause of the organisers by increasing the participation in this event, hence the fundraising to preserve Tuscany's last "strade bianche", or dirt roads. The first Team Brooks included several journalists contributing to cycling magazines worldwide. Brooks aim is to make L'Eroica a truly international event.

Come and ride the race, sporting your new old Brooks jersey.





www.brooksengland.com

Interact with Brooks by posting your story on our website.

Our Website

More information about Brooks England, our history, values and products can be found at www.brooksengland.com. Enjoy our collection of yesteryear catalogues available as PDF documents to download.

On our website you have a few opportunities to interact with our company and with other Brooks users by reading other peoples' cycling experiences and posting your own story. When you log on, don't forget to take the Factory Tour to see our works and how our products are made.



SINCE
1866
BROOKS
ENGLAND
SADDLES
BAGS
ETC.

Heritage

People and Their Stories



News & Events

Catalogue and Shop

Leather & Maintenance

Factory Tour



Dealers & Distribution

Press Section

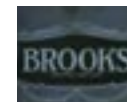
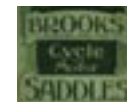
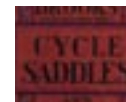
Contact FAQ's Links

Company History

Yesteryear Catalogues

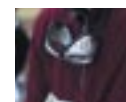
Patent Books

Miscellaneous



L'Eroica

Other News



Download Catalogue 07

Saddles

Bags

Etc.

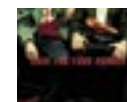


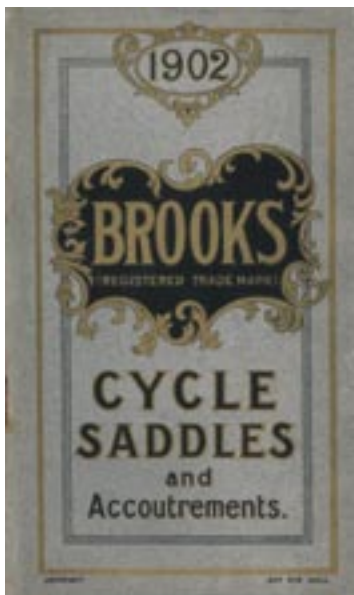
Virtues of riding leather

Caring for your Brooks

Correct Saddle Positioning

Spare Parts





Yesteryear Catalogues Collection

Brooks catalogues from the end of the 1890s are now available for download on our website.

1899



1903



1906



1911



1919



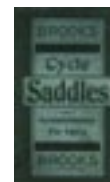
1926



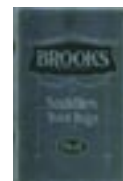
1900



1904



1908



1913



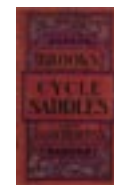
1920



1933



1901



1905



1910



1916



1923



1935



SINCE
1866
BROOKS
ENGLAND
SADDLES
BAGS
ETC.

BROOKS ENGLAND LTD.

Downing Street Smethwick
West Midlands - England
B66 2PA
Tel. +44 (0)121 565 2992
Fax +44 (0)121 565 1630
www.brooksengland.com

Communication and Design
BANDK

Written by
A. Meneghelli and D. Cohen

Photos
P. Maulini and R. Kiaulehn (L'Eroica)
A. Bon (Saddles)
M. Bozzetto (Bags)

Print
Grafiche Peruzzo

SINCE
1866

BROOKS
ENGLAND

SADDLES
BAGS
ETC.