

1986



one dollar

cannondale

THE FUTURE OF CYCLING

We work hard to assure that the Cannondale railroad station logo stands for quality, function and value. This is the Cannondale tradition. And we are not going to let up now. Our Research and Development team is continually designing and testing new products. And improving existing ones. Our goal is to bring you the future of cycling today.

Take our revolutionary new handlebar bag mounting system, for instance. It makes attachment and removal of your handlebar bag quick and easy. And we've eliminated the awkward wire forms and shock cords that make other systems cumbersome.

This year we have also added Jones Sunglasses and Super Lube bicycle lubricant to our line. While these two fine products do not carry the Cannondale logo in fact, they do in spirit. We are proud to make them available to our customers through our nationwide network of authorized dealers.

MADE IN AMERICA

All Cannondale products are built at our factory in Bedford, Pennsylvania, where skilled people construct and assemble each item with care and pride. This too is a Cannondale tradition. We expect that as you browse our 1986 catalog you will see why we are confident that American technology and craftsmanship can still create a superior product.

THE CANNONDALE 100% GUARANTEE

Your purchase of a Cannondale bicycling or camping accessory is just the start of a long lasting relationship that will give you years of enjoyable outdoor adventure. All Cannondale equipment is guaranteed to be 100% satisfactory. That means, if for any reason you are not happy with a Cannondale product, we will repair it or replace it free of charge.

CALL OUR TOLL-FREE HOTLINE: 1 800 BIKE USA

We have established this toll-free number to help us better serve you and the cycling community. If you would like the name of your nearest authorized Cannondale dealer, or have a question or comment about our products, give us a call. (In CT or outside the continental USA, call 1 (203) 838-4488.)

CANNONDALE BICYCLE CLOTHING

Enjoy your cycling even more. Wear Cannondale bicycle apparel. Our special designs and outstanding construction give you miles of cycling comfort in fashions to match your style. Each piece of Cannondale clothing is sewn with functional, attractive patterns, and the fine workmanship for which Cannondale is known. We offer jerseys, shorts, tights, skinsuits, and outerwear in a wide range of styles and materials to meet your cycling needs.

AMERICA'S LINE

We have always been proud that all Cannondale clothing is made exclusively in the United States. That is why we are doubly pleased to announce our association with two of America's finest cyclists, Connie Carpenter and Davis Phinney.

Connie's dramatic victory in the women's bicycle road race won her the first gold medal awarded at the 1984 Olympic games and capped off one of the most distinguished careers in American cycling history. Davis captured a bronze medal a few days later, to make Connie and Davis the first wife and husband to win medals in the same sport during the same Olympiad.



You will find the first fruits of our association with Connie and Davis in refinements we have made to our present selection of clothing, our America's Line. Connie and Davis are also working closely with us to develop a signature series of ultra high performance bicycle apparel. The first pieces of this collection will be making their way into bicycle shops sometime this summer.

THE MATERIALS WE USE

LYCRA®. This sleek, stretchy fabric is actually a blend of nylon for strength and durability, and Lycra® for the glove-like elastic fit you look for in cycle apparel. The four-way stretch clings tightly to your body to reduce wind resistance. It provides total freedom of movement, is lightweight, and extremely comfortable. Lycra® is machine washable and dryable.

POLYPROPYLENE. A remarkable and very versatile material. Polypropylene's unique and highly functional properties make it an ideal fabric for cycling. It insulates to keep you warmer on cool days. It wicks away perspiration to keep your skin dry. It is lightweight and non-allergenic. It does not absorb stains. It dries quickly. Polypropylene should not be exposed to the direct heat of a dryer or iron.

CELANESE®. We line the seats of some Cannondale shorts, skin suits and tri suits with 100% Celanese®. This material gives soft, chamois-like comfort but is completely machine washable. It also dries very quickly.

SUPER CHAMOIS™. Our Ultra-Suede synthetic chamois has the look and feel of real leather for total comfort. It's soft and supple as sheepskin and stays that way. Super Chamois™ is machine washable and it dries very quickly. We line our new eight panel shorts with Super Chamois™.

SUPER BLEND. We use this new material in the garments that must be both rugged, attractive and wind repellent. It's made of 42% polyester for durability, 36% nylon for wind shedding, and 22% cotton for a soft, natural feel. It is completely machine washable and dryable.

Cover photo by Hugh Smith

Studio photography by Karen Heerlein

Outdoor photography by Bruce M. Alexander

Olympic medalists Connie Carpenter and Davis Phinney on a ride in Colorado. Photograph by Viggio.



LYCRA CYCLE WEAR

World-class performance.

EIGHT PANEL LYCRA SHORTS (C543)

You'll find the world-class influence of Connie and Davis in the design of our new Lycra shorts. Eight panel construction and our true racing cut give

you a nearly custom fit, even when you're in the tightest downhill tuck. We use Super Chamois™ to line the crotch for super comfort and easy care. A terry/foam panel provides extra support and comfort, and gripper elastic keeps the shorts riding in place on your leg. You won't find a more carefully crafted garment anywhere.

Colors: Ebony, Turquoise, Vibrant Blue
Sizes: P, S, M, L, X
Price: \$45.00



Terry/foam panel in front for support.

Super Chamois lining for comfort.

Eight panel construction for nearly custom fit.

Gripper elastic holds legs in place.

Eight Panel Lycra Shorts (C543)

Economical cycling comfort.

LYCRA CYCLE SHORTS

Our six-panel Nylon/Lycra cycle shorts cling to your body like a second skin. And we've given them a true racing cut, so they fit perfectly when you're in the cycling position. The fleecy 100% Celanese® crotch lining gives soft, chamois-like comfort and is completely machine washable.

STRIPED (C420)

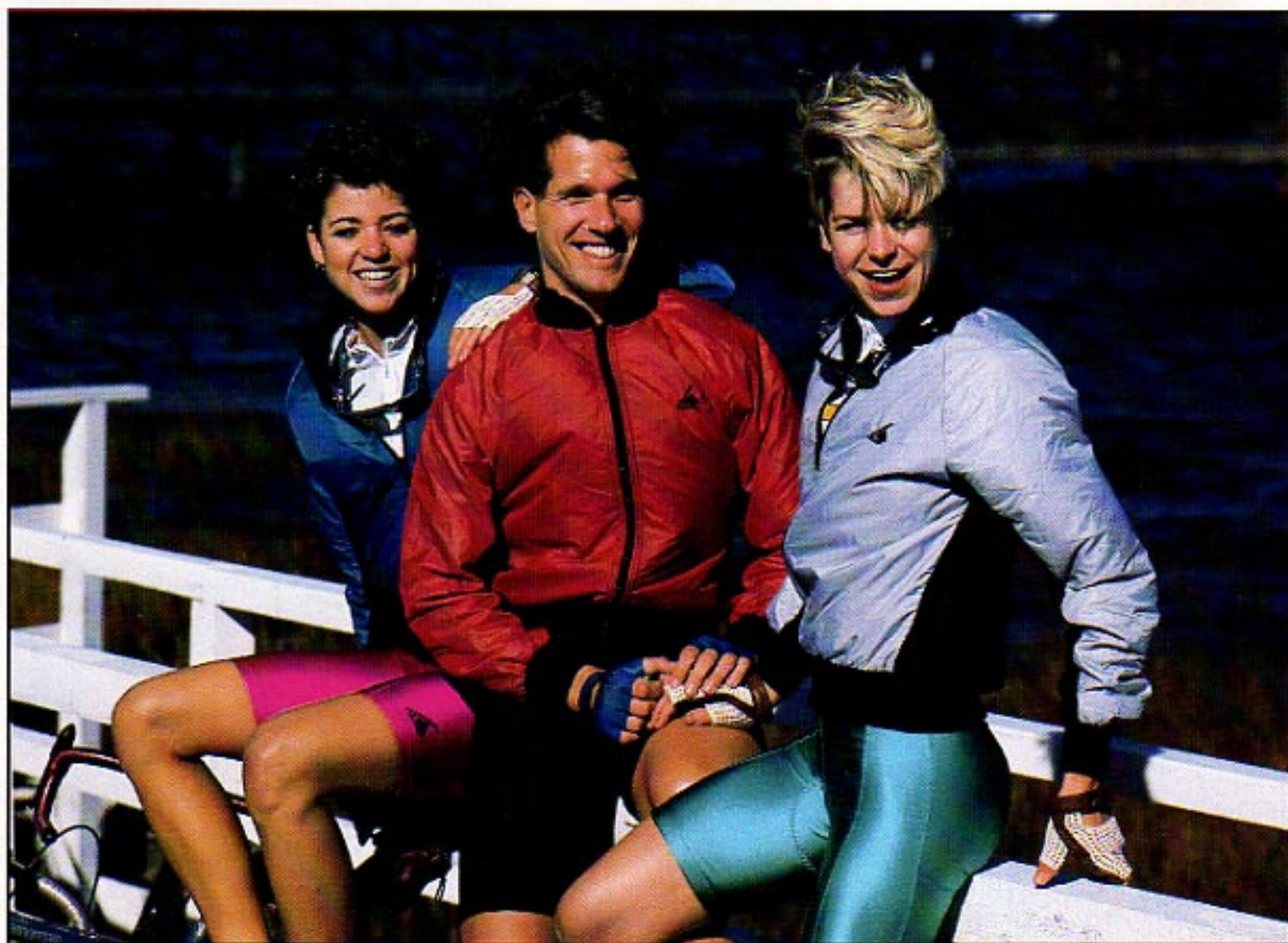
Colors: Ebony, Vibrant Blue
Sizes: P, S, M, L, X
Price: \$29.99

ONE COLOR (C830)

Colors: Ebony, Fuchsia, Turquoise, Vibrant Blue
Sizes: P, S, M, L, X
Price: \$25.00

Sizing charts are on page 6.

Lycra Cycle Shorts (C830)





One-color Lycra Jersey (C539)

Lightweight, comfortable.
LYCRA CYCLING JERSEYS

Cannondale Nylon/Lycra jerseys are designed to give you the performance you need for total cycling comfort. The four-way stretch clings to your skin and allows complete freedom of movement. We tailor Cannondale jerseys to fit properly even while you are in the riding position. The partial front zipper allows ventilation control, while two back pockets with elastic closure hold keys, wallet, tools, banana...

ONE-COLOR LYCRA JERSEY (C539)

Colors: Fuchsia, Red, Turquoise, Vibrant Blue

Sizes: P, S, M, L, X

Price: \$29.99

PATTERNED LYCRA JERSEY (C537)

Colors: Kaleidoscope, Zenith Stripe

Sizes: P, S, M, L, X

Price: \$45.00

CANNONDALE STRIPE LYCRA JERSEY (C413)

Colors: White, Vibrant Blue

Sizes: P, S, M, L, X

Price: \$39.99 (not pictured)



Patterned Lycra Jersey (C537)

SKINSUITS, TIGHTS, TRIATHLON WEAR

Designed for women.

LADY'S TRI SUIT (C419)

This multi-sport Lycra suit is designed exclusively for women athletes. We've combined cycle shorts with a woman's swimsuit top for a supportive and comfortable fit for swimming, biking and running.

C419—Women's Tri Suit

Color: Vibrant Blue

Sizes: P, S, M, L, X

Price: \$39.99

Multi-sport comfort.

UNISEX TRI SUIT (C414)

Swim, bike and run in this one piece triathlon suit for men and women. The styling and Lycra fabric provide total freedom of movement. Our 100% Celanese® lining is soft and comfortable, while being quick to dry and easy to care for. Cut transition times in a Cannondale Tri Suit.

Colors: Ebony, Vibrant Blue

Sizes: P, S, M, L, X

Price: \$39.99

Swim, bike, and run...

MULTI-SPORT TRI SHORTS (C544)

Our new Lycra Tri Shorts are built for running, biking, and swimming. They feature a quick-drying 100% Celanese® crotch lining cut in an hourglass shape for full freedom of movement. The drawstring waist and shortened legs make them ideal for all types of active outdoor use. And they come in styles that will stand out in a crowd.

Colors: Ebony w/Red stripe, Ebony w/Blue stripe, Blue w/Fuchsia stripe, and Kaleidoscope.

Sizes: P, S, M, L, X

Price: \$19.99

SIZING CHARTS

Unless otherwise noted, all Cannondale clothing is made in Unisex sizing. To determine your Cannondale Unisex size, use the charts below.

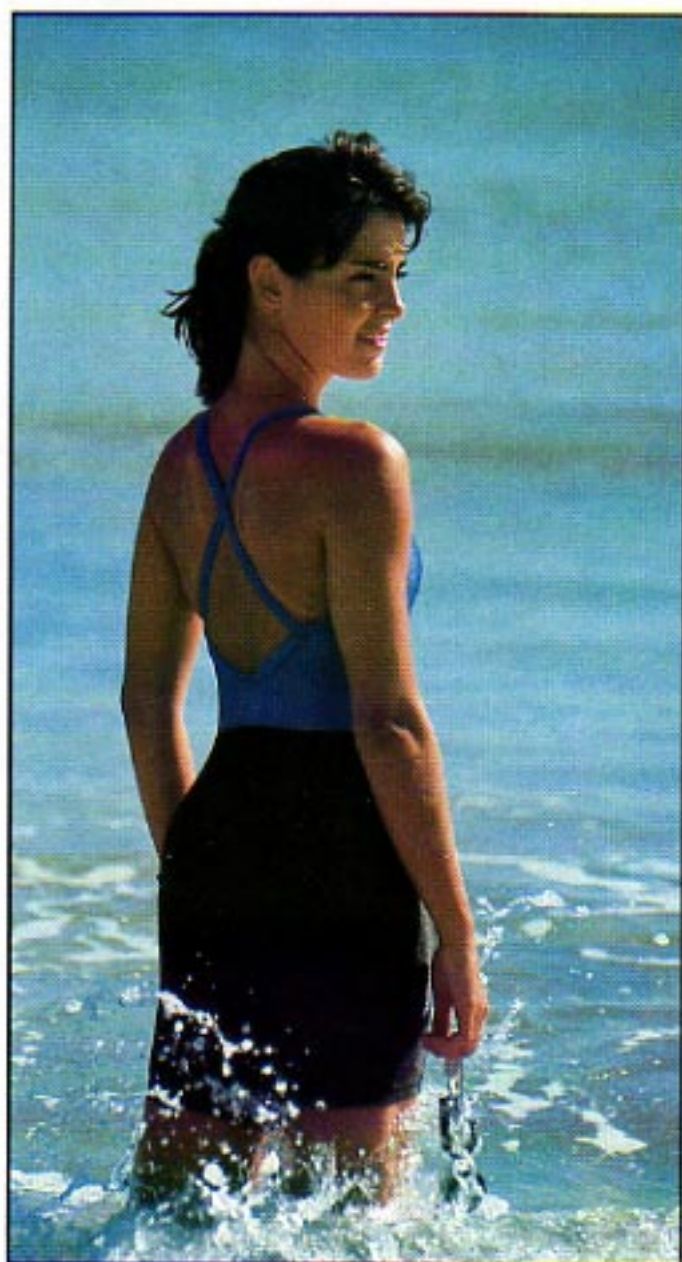
Shorts, Tights, and
Lycra Suits

	MALE	FEMALE
P	28	6-8
S	30-32	10-12
M	34-36	14-16
L	38-40	18
X	42	

Jerseys and Jackets

	MALE	FEMALE
P	30-32	6-8
S	34-36	10-12
M	38-40	14-16
L	42-44	18
X	46-48	

Tri Shorts (C544)
and Unisex Tri Suit (C414).



Lady's Tri Suit (C419)





Two Color Racing Suit (C826) and Striped Racing Suit (C412).

Performance styling.
LYCRA RACING SUITS

A one piece cycling suit that clings to the contours of your body like a second skin. The sleek, aerodynamic design is stylish and enhanced by our special racing cut. Features our Super Chamois crotch lining, and full front zipper. Elastic thigh bands keep the legs from riding up while you pedal.

STRIPED (C412)

Colors: Ebony, Vibrant Blue

Sizes: P, S, M, L, X

Price: \$65.00

TWO COLOR (C826)

Colors: Red, Vibrant Blue, Yellow

Sizes: P, S, M, L, X

Price: \$35.00

Sleek comfort.
LYCRA CYCLE TIGHTS

Light, sheer wind protection for cyclists. Also great for other active sports. Our Nylon/Lycra tights hug your skin and allow total freedom of movement. The crotch is reinforced for durability. Designed to be worn with cycle shorts.

STRIPED (C418)

Colors: Ebony, Vibrant Blue

Sizes: P, S, M, L, X

Price: \$49.99

WITH PIPING (C542)

Colors: Ebony, Fuchsia, Turquoise,
Vibrant Blue

Sizes: P, S, M, L, X

Price: \$35.00



Tights with Piping (C542) and Striped Tights (C418).

SPORT CYCLE WEAR

Summer-weight polypropylene.

SHORT SLEEVE POLYPROPYLENE JERSEYS

Polypropylene is great for warmer cycling too, because it wicks perspiration away from your skin to keep you dry and comfortable. These short-sleeve jerseys are great for summer cycling and feature back pockets and partial front zipper.

STRIPED (C415)

Colors: Red, Vibrant Blue, Yellow

Sizes: P, S, M, L, X

Price: \$19.99

ONE COLOR (C416)

Colors: Ebony, Red, Vibrant Blue, Yellow

Sizes: P, S, M, L, X

Price: \$19.99

(not pictured)

Keeps you warm.

POLYPROPYLENE OUTDOOR SHIRT (C834)

This one color polypropylene shirt is great for all types of outdoor wear from cycling to skiing. It makes a great under garment too.

Color: Ebony

Sizes: P, S, M, L, X

Price: \$29.99



Polypropylene jerseys
(C838, C834)

For cold weather cycling.

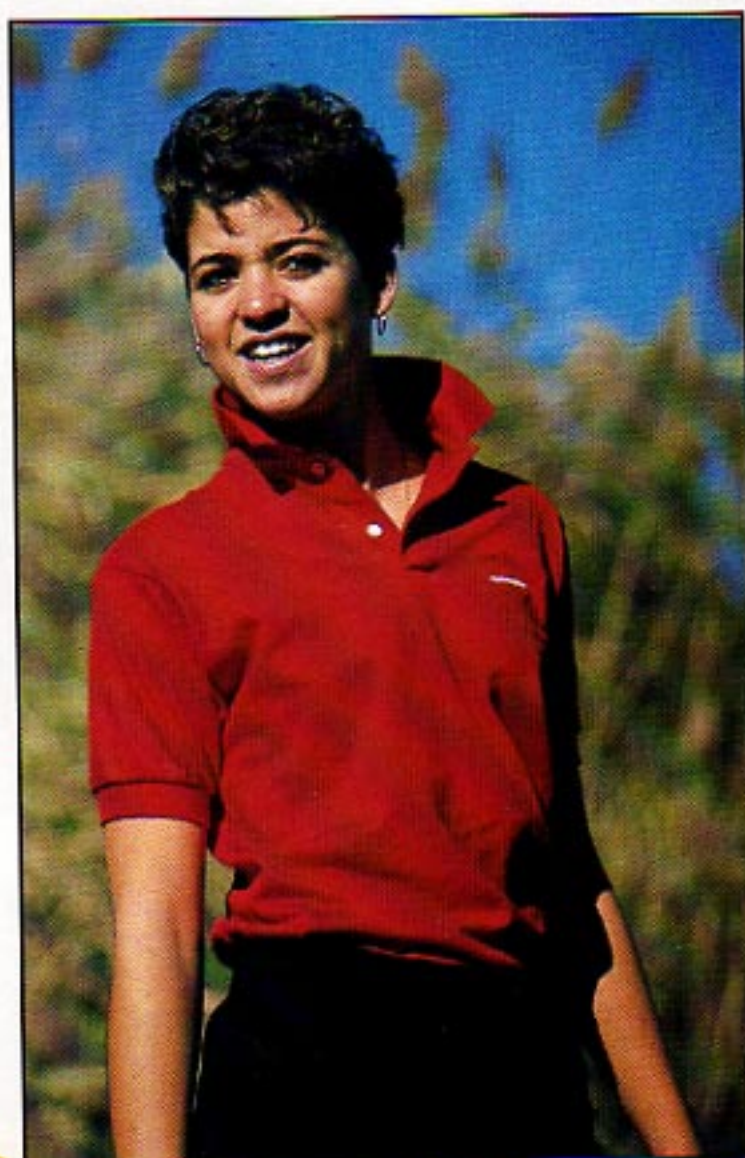
POLYPROPYLENE CYCLE SHIRT (C838)

The perfect jersey for rides when the mercury has dropped. Polypropylene insulates and keeps your skin drier by wicking away perspiration. Convenient back pockets.

Colors: Red, Vibrant Blue, Yellow

Sizes: P, S, M, L, X

Price: \$35.00



Cannondale Polo Shirt (C541)

Sharp styling.

POLO SHIRT (C541)

Our attractive knit polo shirt is perfect for casual wear off your bike. It's got the comfort and good-looks you can only find in garments made of 100% cotton.

Colors: Blue, Ebony, Red, White

Sizes: P, S, M, L, X

Price: \$25.00

Rugged outdoor wear.

CANVAS SHORTS (L)

These durable shorts are built for those active times you're not cycling. Made of 100% cotton canvas for long-lasting comfort. Four pockets, including two flap-covered back pockets, provide room for jack knife, compass, wallet...

Colors: Forest, Khaki, Steel Gray

Sizes:

Men (ML)—28,30,32,34,36,38,40,42

Women (FL)—6,8,10,12,14,16,18

Price: \$39.99

Canvas Shorts



Cycle Jersey (C839) and Touring Shorts (CS)

Great for recreational riding.
TOURING SHORTS (CS)

The ideal combination of styling and practicality for touring, commuting, and recreational riding. Comfortable, durable, and easy to care for. Lycra is blended into the material to give the shorts stretch for freedom of movement. Unlike cut-offs or gym shorts, our touring shorts do not have a crossing seam in the crotch, so you can avoid the chafing discomfort that extra seam gives. And we've lined the crotch with a fleecy 100% Celanese® lining for double comfort. There are two large pockets for cargo, too.

Colors: Blue, Camel, Silver

Sizes:

Men (MCS)—28,30,32,34,36,38,40,42

Women (FCS)—6,8,10,12,14,16,18

Price: \$39.99

Soft 50/50 blend.
SHORT-SLEEVED CYCLE SHIRT (C839)

An attractive, lightweight cycling shirt blended from 50% cotton and 50% polyester to make it soft, durable, and completely machine washable. Three back pockets hold wallet, keys, patch kit, etc. Partial front zipper and rib knit collar.

Colors: Red, Vibrant Blue, Yellow

Sizes: P, S, M, L, X

Price: \$25.00

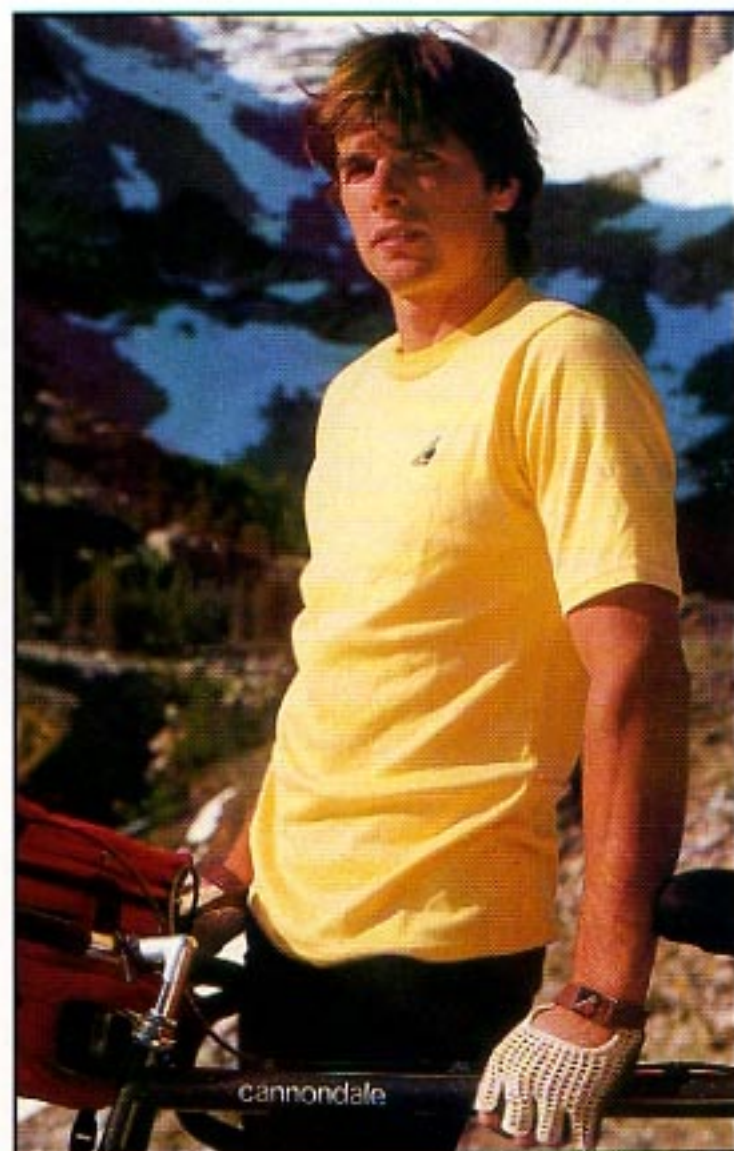
Three back pockets...
CYCLE TEE (C832)

Wear this comfortable cycle tee on a full day of riding and carry your wallet, tools and a spare tube in the three back pockets. The 50/50 blend of cotton and polyester is completely machine washable.

Colors: Red, Vibrant Blue, Yellow

Sizes: P, S, M, L, X

Price: \$19.99



Cycle Tee (C832)

Sizing charts are on page 6.

Photograph by Galen Rowell.

COLD WEATHER GEAR, SUNGLASSES

Breathable and warm.

TRAINING JACKET (C836)

Stay warmer during those cold weather rides in this specially designed cycling jacket. It features a full 100% polypropylene lining, with an outer shell of Super Blend over the front and sleeves to block the wind. The back layer of polypropylene remains uncovered to allow perspiration to pass through to keep you drier. Two zippered back pockets provide stow space. Rib knit cuffs, collar and waistband. Full front zipper.

Colors: Ebony, Red, Silver, Vibrant Blue

Sizes: P, S, M, L, X

Price: \$59.99

All-purpose cycle wear.

POLYPROPYLENE CYCLE SHORTS (C833)

Enjoy more comfort in the saddle for touring, training or racing. Our polypropylene cycle shorts are a blend of polypropylene and Lycra, giving them skin-hugging stretch and outstanding perspiration wicking ability. The crotch is lined with fleecy, 100% Celanese®.

Color: Ebony

Sizes: P, S, M, L, X

Price: \$29.99

Keeps your legs warm.

POLYPROPYLENE TIGHTS (C835)

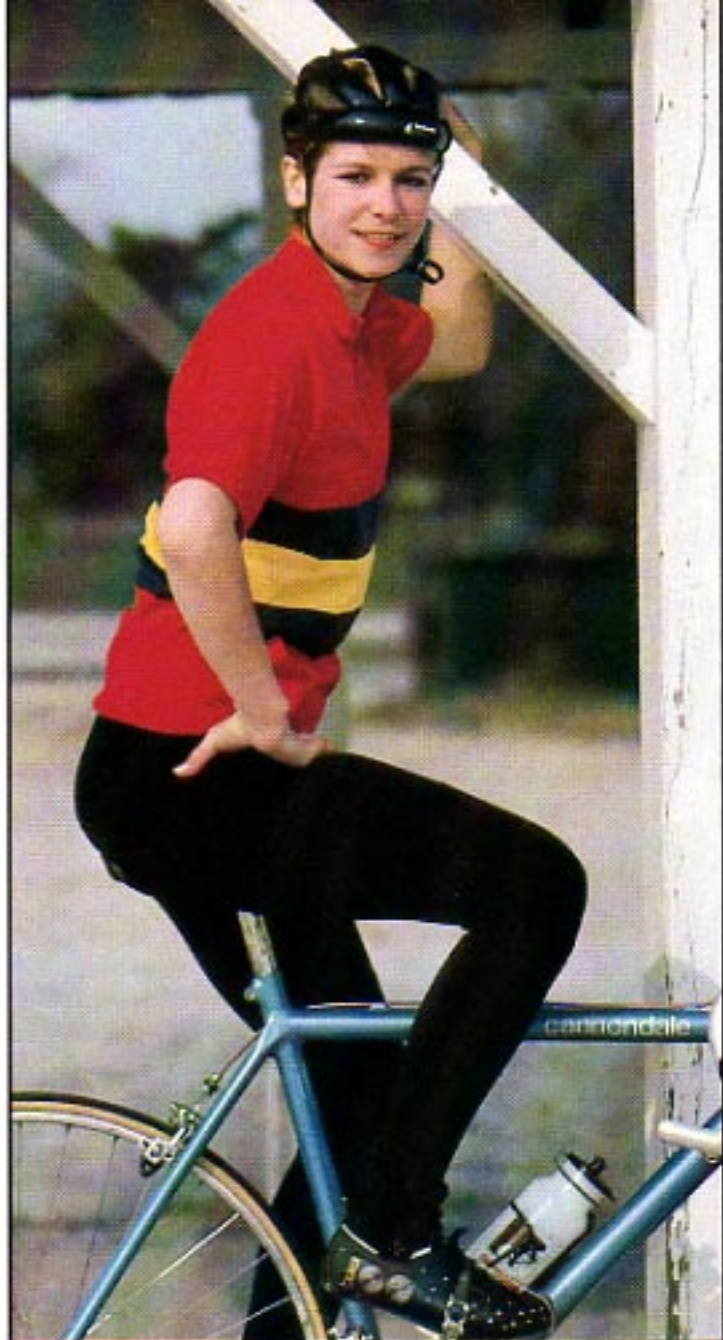
The lightweight, cold weather insulation you need for year-round cycling. Our tights are a blend of Lycra and polypropylene to keep them clinging to your legs with plenty of stretch for unrestricted pedaling. The knees and crotch are double-thick for added durability and warmth. Waist drawstring and zippered cuffs. To be worn with cycle shorts.

Color: Ebony

Sizes: P, S, M, L, X

Price: \$49.99

Sizing charts are on page 6.



Polypropylene Tights (C835).



Training Jacket (C836) and Polypropylene Shorts (C833).

Carbonite® 360

JONES

Fashion in shatterproof lenses.

JONES SUNGLASSES

Jones sunglasses are worn by some of the most demanding users of protective eyewear, including the FBI and US Secret Service. We first looked at Jones eyewear on the recommendation of Connie Carpenter and Davis Phinney. What we found was an amazing assortment of high tech, high fashion eyewear that serves both style and function.

State-of-the-art Cycling Glasses

The latest product from Jones is the *Magic*, sunglasses so advanced they have established the state-of-the-art in eyewear for cyclists. The *Magic's* special goggle design offers maximum protection from wind turbulence and air-borne particles. But the true heart of the *Magic* is its Carbonite® 360 lenses which carry the Jones lifetime warranty against breakage. These lenses filter 100% of the sun's harmful rays, are super resistant to abrasion, 65% lighter than glass, and are absolutely distortion free. And they're virtually impossible to break which means they offer superior protection for your eyes.



Malibu

Magic

Similar to the *Magic*, but with a more economical lens, is the *Malibu*. You can find *Magic*, *Malibu*, and the complete selection of quality Jones Sport Action eyewear only at your local authorized Cannondale dealer.

MAGIC—\$59.00

MALIBU—\$43.50

Blocks the wind.

WIND SHELL (C828)

Lightweight protection for cold weather cycling thanks to our two-fabric construction. The tightly woven Super Blend front and sleeves blocks the wind, while your perspiration evaporates through the breathable 100% polypropylene back panel. This panel also stretches so the shell won't ride up while you're bent low over the handlebars. Rib knit cuffs, collar and waistband. Partial front zipper.

Colors: Red, Silver, Vibrant Blue

Sizes: P, S, M, L, X

Price: \$35.00

4 oz. of wind protection.

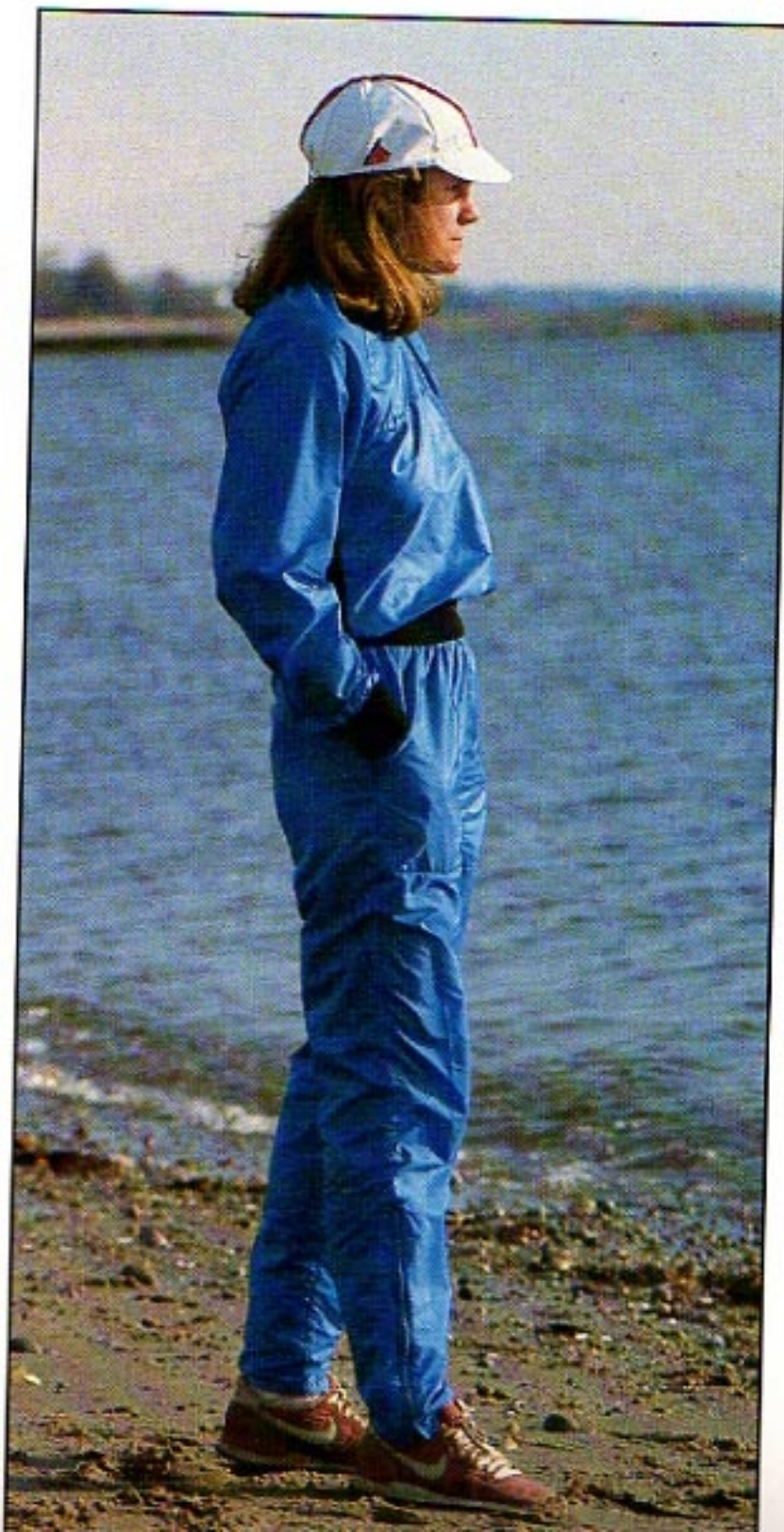
WIND PANTS (C829)

Reduce wind chill with these Super Blend wind pants. They feature a zippered gusset at each ankle for sliding easily on over cycle shoes. They have a drawstring at the waist. The perfect complement to our Wind Shell or Training Jacket. And they weigh less than 4 ounces.

Colors: Red, Silver, Vibrant Blue

Sizes: P, S, M, L, X

Price: \$29.99



Wind Shell (C828) and
Wind Pants (C829).

RAIN WEAR, FOOT WEAR, GLOVES

Now with reflective piping! **RAIN JACKET (C918)**

Our nylon rain jacket is designed specifically for cyclists, yet remains versatile enough for virtually any outdoor activity. The back features an extra long flap to adequately protect the cyclist, but tucks up out of the way when off the bike. Air circulates through a double zippered vent beneath each arm and a specially cut, mesh-covered vent across the back. The roomy hood accommodates a helmet, but is adjustable for use without a helmet. Other features include ad-

justable cuffs, full length YKK nylon coil zipper, zippered pockets and reflective piping for added visibility.

Color: Bright Yellow, Blue
Sizes: P, S, M, L, X
Price: \$59.99

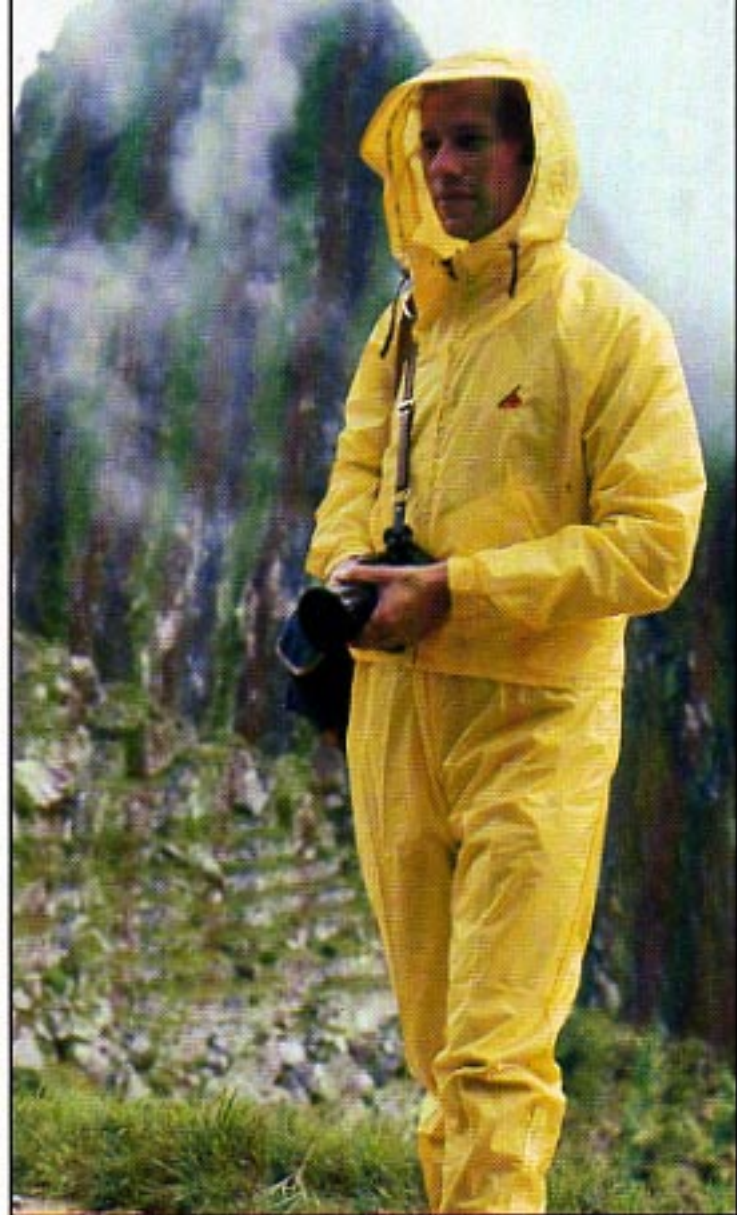
For full wet weather protection. **RAIN PANTS (C919)**

Like our rain jacket, these rain pants provide super protection in wet weather for cycling and other outdoor activities. They're tailored with an elastic waistband and zippered access to your clothing pockets. Each leg ends with a hook-and-loop closure that keeps the pants tight around your ankle when you're riding, but when opened allows freedom of movement for walking and makes it easy to put the pants on over shoes.

Color: Bright Yellow, Blue
Sizes: P, S, M, L, X
Price: \$29.99



Rain Jacket (C918)
and Rain Pants (C919)



Photograph by Anne Kugielsky

Wraps your feet in warmth. **INSULATED BICYCLE BOOTIES (C551)**

Our new Neoprene bicycle booties keep your feet warm for rides in even the coldest weather. Neoprene is the material used by divers whose lives depend on keeping warm. Reflective tape for increased visibility. Our booties slip on over your cycle shoes and zip up the back. A hook-and-loop tab at the top helps keep the booties snug. Your cleat fits through the hole in the sole of the booties to allow high performance cycling no matter what the weather.

Colors: Ebony
Sizes: P, S, M, L, X
Price: \$19.99



Bicycle Booties (C551)

Sizing charts are on page 6.



Lycra Gloves (BG85)

Lightweight, padded...

LYCRA CYCLE GLOVES (BG85)

Soft, supple leather and full padding make our new Lycra cycle gloves a pleasure to wear. The backs are color-

ful Lycra material that conforms perfectly to your hand, giving you an unrestricted, comfortable grip of the handlebars.

Sizes: S, M, L
Price: \$16.99



Leather Cycle Gloves (BG75)

The world's finest! **LEATHER CYCLING GLOVES (BG70)**

The world's finest cycling gloves, made of top-quality glove leather. The airy knit backs are hand-crocheted of 100% cotton to assure long-lasting comfort and fit. Padding protects your palms and even extends to the thumb. Hook-and-loop tabs provide easy closure.

Sizes: P, S, M, L, X, J
Price: \$29.99



Touring Shoe (S) and Cyclin' Socks (C827)

Soft, warm, comfortable. **POLYPROPYLENE CYCLIN' SOCKS (C827)**

Great all-weather foot wear. Polypropylene wicks perspiration away, cushions, and insulates for your toes' comfort.

Sizes: S, L
Price: \$3.99

For efficient pedaling. **CYCLE TOURING SHOE (S)**

You'll enjoy all-day pedaling efficiency, walk-about comfort and good looks with Cannondale Cycle Touring Shoes. They're styled like a classic running shoe, but close inspection reveals the added details that make them exceptional for cycling. The soles are specially designed to provide stiffness for pedaling and flex for walking. Suede reinforcements protect the nylon uppers at critical wear points. Angled ridges in the sole grip the pedal and align your foot properly. To assure you of a good fit, Cannondale touring shoes are available in standard American men's and women's sizes.

Colors: Blue, Silver

Sizes:

Men (MS)—half sizes 7 to 11 1/2,
12, 13

Women (FS)—half sizes 5 to 10

Price: \$29.99

CANNONDALE BICYCLE BAGS

No one knows bicycle packs better than Cannondale. We've been making them for nearly fifteen years. During that time, Cannondale packs have logged over half a billion miles, hauling cyclists' gear all over the world. We know what it takes to make a dependable bicycle bag. Our commitment to quality craftsmanship and functional design is your assurance of mile after mile of reliable service from your Cannondale bicycle bag.

DURABLE, LIGHTWEIGHT NYLON CORDURA®

Pick up any Cannondale handlebar bag, for instance. Note how light it is, and yet how tough it feels. That's because we use urethane-coated 500 denier nylon Cordura® in every bicycle bag we make. 500d Cordura® is extremely durable due to its high tear strength and resistance to abrasion. Yet it is still light in weight. And because it has a tighter weave, urethane-coated 500d Cordura® is more waterproof than heavier weaves.

MADE IN AMERICA

Look more closely at the bag. Note the accuracy of our stitching. Like every Cannondale product, all our bicycle bags are crafted with pride at our factory in Bedford, Pennsylvania. We've sewn every seam with eight stitches per inch because we have found that fewer leaves the seam weak, and more weakens the fabric. Eight stitches per inch gives the seam its top strength, which we supplement by reinforcing all stress areas with bartacking and double stitching.

CANNONDALE EXTRAS

We use only YKK nylon coil zippers on Cannondale bicycle packs. We have found that they are unsurpassed in long-lasting, dependable use. Other Cannondale extras include pull cords on zipper

tabs, reflectors on most models, generous rain flaps over zippers, and of course Cannondale's 100% guarantee of satisfaction.

Compare Cannondale packs with any others. We think you'll see the difference. Ride with Cannondale packs and we know you will.

NEW ULTIMATE HANDLEBAR BAGS

Have you often wished it were easier to take your handlebar bag with you once you've parked your bicycle? Have you always wanted a large more sturdy bag? Then you should take a good look at our new Ultimate Handlebar Bags.

CLEAN, SIMPLE ATTACHMENT

We have developed the first true quick-release mounting system (pat. pend.), which makes attachment and removal of your handlebar bag literally a snap. Just slide the bag mount onto the bar bracket. And the bag is locked securely into place. To remove the bag, simply press the tab and lift. It's that easy and that quick. There are no awkward shock cords or wire forms to deal with. Your bag rides cleanly, suspended firmly from your handlebar. There's none of the bouncing and swaying you get with other systems.

STURDY SUPPORT FRAME PROTECTS GEAR

The unique internal frame is made of the same rugged, glass-reinforced plastic that we use in our time tested pannier frames. This lightweight frame gives the bag a rigid shape and provides an extremely roomy interior for storing your gear.

Photograph by Galen Rowell



EVEN FITS ALL-TERRAIN BICYCLES

The system fits nearly every handlebar and stem including most all-terrain bike handlebars. Once you remove the bag only one piece remains on your bicycle, the handlebar bracket. And it even comes off quickly when you want it off.

THE COMPLETE ULTIMATE TOURING SYSTEM

With the introduction of our quick-release handlebar bag mount, we complete our Ultimate Bicycle Touring System. Now you can put the total system to work for you. Combine one of our new handlebar bags with our Ultimate racks and Tour-Lock mounting panniers to give yourself the advantage of the most functional touring system available today.



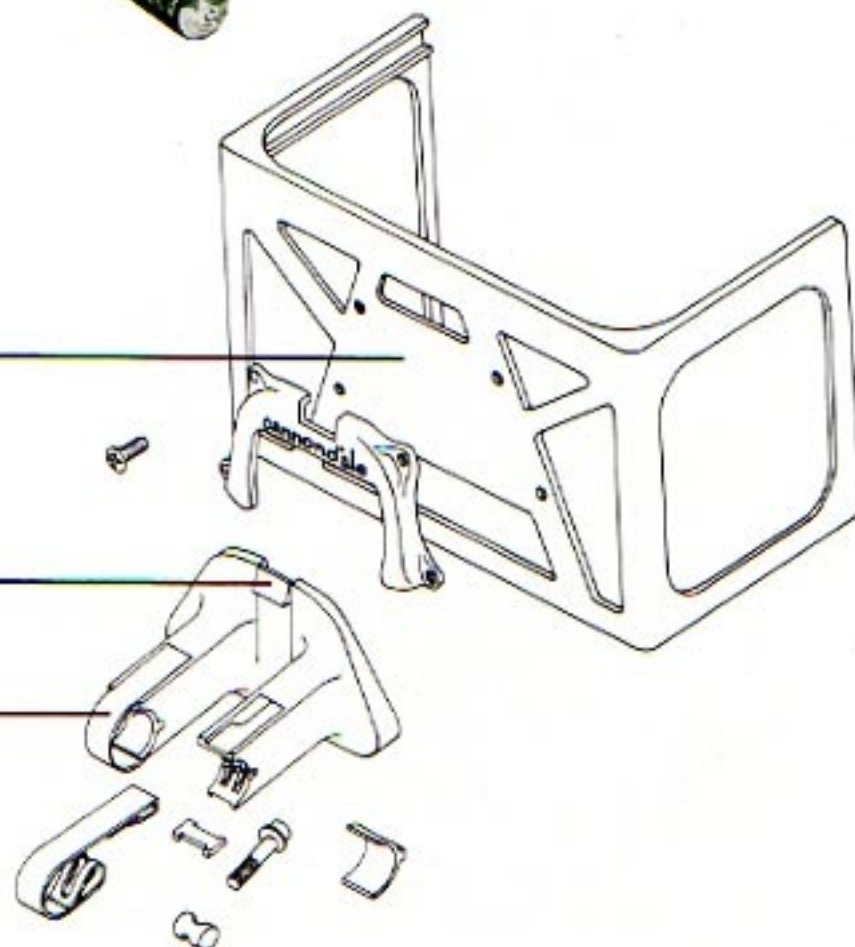
Remove our new quick-release handlebar bag from your bike in seconds. Just press the tab and pull up. And there are no awkward shock cords or wire forms to deal with.



The internal support frame is made of tough, glass-reinforced nylon. It protects your gear and distributes the load evenly throughout the bag.

Our quick-release system makes attachment and removal of your handlebar bag literally a snap.

The handlebar bracket fits nearly every handlebar and stem, including most ATB bars.



HANDLEBAR BAGS

A Cannondale handlebar bag puts your cycling gear at your fingertips. It's the perfect spot to stow your camera, wind jacket, notebooks, wallet, sunglasses and all the other essentials you like to carry with you on your bike. And with our new quick-release mounting system (see previous page for more information), it's just as easy to take your gear with you when your bike is parked.

You can choose from four Cannondale models, each with a different carrying capacity and special features to meet your exact needs. Each and every one is built with rugged 500 denier nylon Cordura®, a fabric that offers the best balance of lightweight and durability even under the harsh conditions of long distance touring.

Cannondale handlebar bags are built tough and built smart, so you don't have to worry about anything but enjoying your ride.

Made in America. Cannondale products are the result of American engineering and technology, made with pride at our factory in Bedford, Pennsylvania.

Bicycle Bag Colors. Unless otherwise noted, all bicycle bag colors are as follows: Blue, Ebony, Green, Plum, Red, Silver, Vibrant Blue.

Packs a lot of extras!

TRESTLE (B556)

Our largest handlebar bag, made even better with our new quick-release mounting system. Two large exterior pockets supplement the roomy interior compartment to provide loads of cargo space. Two side mesh pockets hold your wallet and sunglasses. Comes with map case and shoulder strap.

Capacity: 660 cu. in.

Weight: 25.5 oz.

Price: \$55.00



Quick-Release Trestle (B556)



Padded for camera gear.

HANDLEBAR BAG INSERT (A035)

Turns your handlebar bag into a camera case. Comes with two padded lens sleeves (which may also be purchased separately).

Price: \$12.99

Lens Sleeve (A036)

Price: \$2.99



Quick-Release makes it easy.
CASEY (B555)

Our mid-sized handlebar bag features a roomy front pocket and spacious main compartment to hold a lot of gear. Two mesh pockets supply even more space for your cargo. And thanks to our new quick-release mounting system, the Casey's easy to take with you either off or on your bike.

Capacity: 560 cu. in.
Weight: 21 oz.
Price: \$39.99

Quick-Release Casey (B555)



Lightweight cargo space.
ROUNDHOUSE (B554)

A lightweight, economical way to add convenient cargo space to your bicycle. It features a roomy interior that can carry lunch, tools, jacket, you name it. Our quick-release system makes this bag a great value that's easy to use for all types of cycling.

Capacity: 265 cu. in.
Weight: 13.5 oz.
Price: \$25.00

Quick-Release Roundhouse (B554)



For off-road biking!
MUD DIGGER (BX20)

Attaches to the triangle of bull-moose style handlebars with three sets of hook-and-loop straps. Large main compartment and flat zippered pocket on top. Essential for carrying gear into the wilds.

Capacity: 160 cu. in.
Weight: 7 oz.
Price: \$15.99

Mud Digger (BX20)



TOURING SYSTEMS

THE ULTIMATE TOURING SYSTEM (A085)

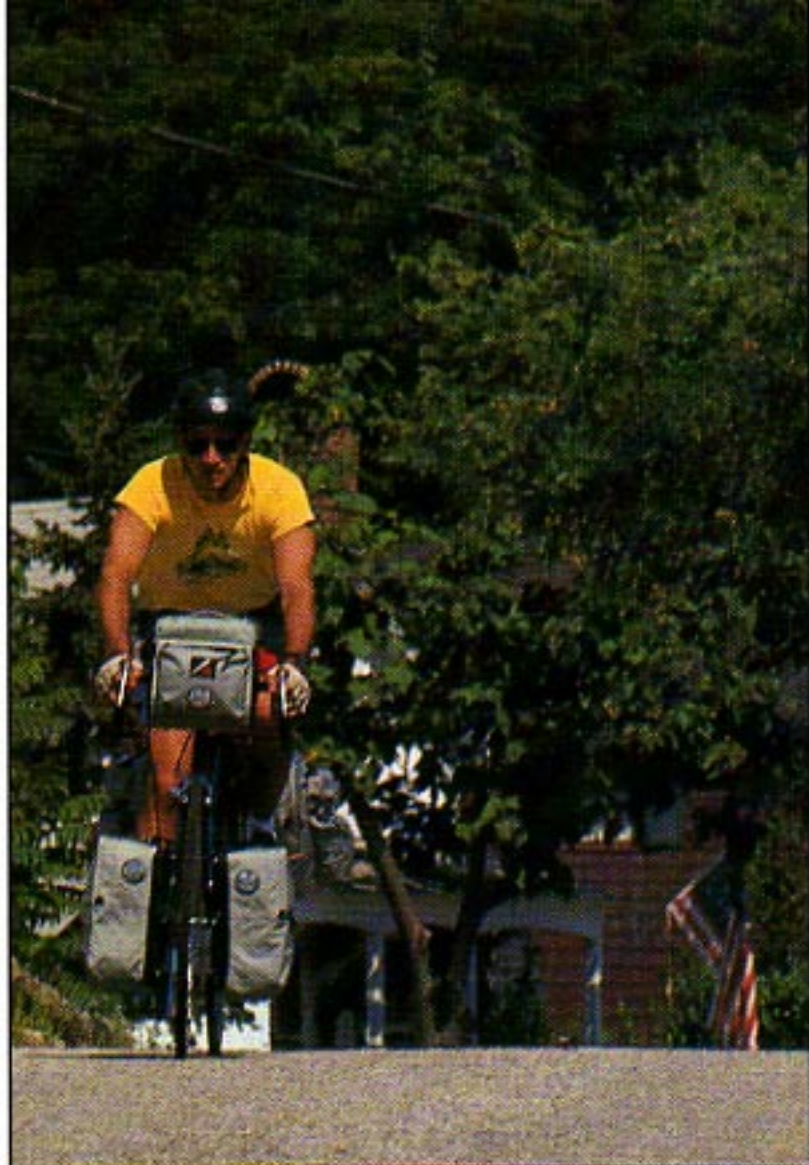
Our Tour-Lock™ mounting system, four-point attachment, and Ultimate Racks provide the most stable and secure pannier suspension on the market. And the beauty is in its simplicity.

A flick of a lever provides positive locking of the pannier to the rack. And the two extra hooks that we put on at the bottom of the pannier makes the bag even more stable. On bumpy roads, your panniers stay firmly and securely in place. Even turn the bike upside down. The pannier won't come off...until you want to remove it. Then just flick the lever back and the pannier comes off easily.

The Tour-Lock™ mounting system is available as an option for Cannondale panniers and must be used with Cannondale's Ultimate Racks (BR82, BR83). The kit comes complete with the Tour-Lock™ locking mechanism and the nylon covered hooks you need to give you the total stability of the ultimate pannier system.

Price: \$14.99

Bicycle Bag Colors. Unless otherwise noted, all bicycle bag colors are as follows: Blue, Ebony, Green, Plum, Red, Silver, Vibrant Blue.



Stabilizes panniers.

ULTIMATE REAR RACK (BR83)

Super lightweight construction with aluminum tubing (not solid rods). One-bolt adjustment. Four-point connection to the bicycle. Our Ultimate Rear Rack doesn't just hold panniers, it actually stabilizes them with our exclusive stabilizing struts. Will fit most panniers.

Colors: Blue, Ebony, Red, White

Weight: 15.1 oz.

Price: \$39.99

Sets a new low standard.

ULTIMATE LOW RIDING FRONT RACKS (BR82)

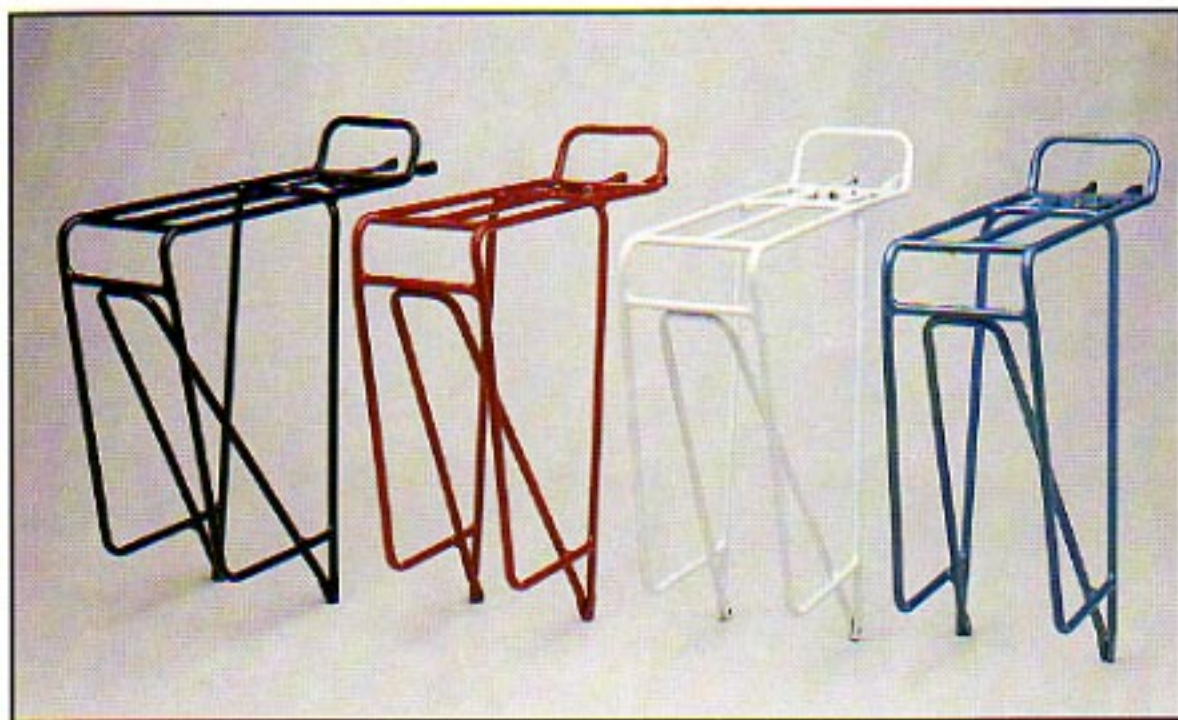
We have improved upon existing designs with our new low riding front bicycle rack. It centers the front pannier's weight on the center line of the head angle instead of around the hub. This provides easier steering, because it takes less effort to turn the handlebar. Your pannier's weight is suspended from both sides of the fork blade, which reduces stress on the rack

itself. Cannondale's low riding front rack comes with all the necessary hardware to mount it on forks with or without braze-ons, with no annoying hoop crossing over the wheel. Will fit most front panniers.

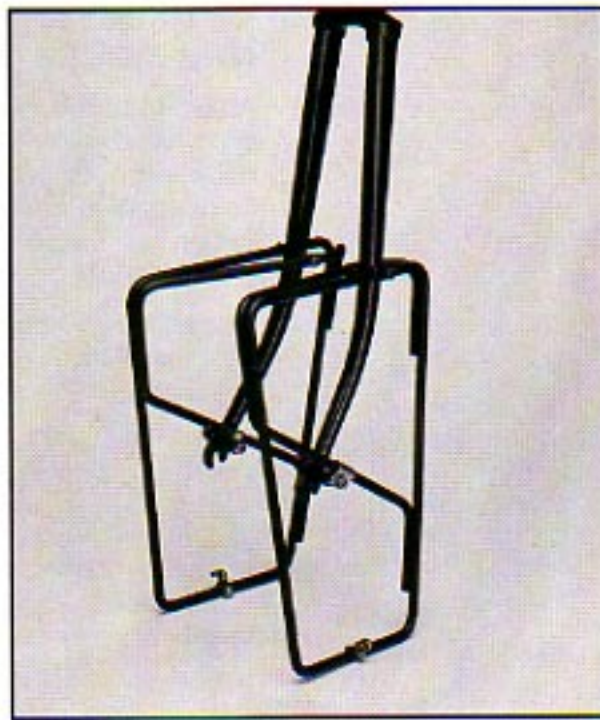
Color: Ebony

Weight: 15.2 oz.

Price: \$29.99



Ultimate Rear Racks (BR83)



Ultimate Low Riding Rack (BR82)

CANNONDALE PANNIERS

The rigors of bicycle touring demand a lot of a pannier. Durability. Dependability. Ease of use. And the guts to carry a lot of gear. Those are the elements that go into every Cannondale bicycle pannier.

Our rigid internal support frames (U.S. pat. #4,271, 996) give Cannondale panniers advantages that no other panniers can match:

- The mounting system attaches directly to the internal frame, so stress is removed from pack fabric, seams, and zippers.
- The frame allows for convenient side loading, which is especially helpful when you've got gear lashed to the top of your rack.
- Your gear is protected and the pannier's shape is maintained even when empty.
- Provides a shelf-like extension of the rear rack, handy for keeping tent and sleeping bag firmly in place on top of your rack.
- The frames are made of a resilient material that can take abuse without breaking.

Overlands (B041)



The entire system mounts with ease to your rack. Just hook the bottom of the compression spring to the hook at the base of your rack, pull up—don't worry, our exclusive compression spring cannot be overstretched—and hook the nylon coated J-Hooks over your rack's deck rail. Your pannier is now firmly in place. And the rigid PVC tube that encases the compression spring helps keep the pannier snug against the rack for extra stability.

Sized for extended travel.

OVERLANDS (B041)

Your cross-country companion. Extremely roomy. Extremely tough. Large main compartment and eight exterior pockets per set holds all your gear and keeps it handy. The choice of touring cyclists the world over.

Capacity per set: 2,500 cu. in.

Weight per set: 64 oz.

Price: \$109.99

Whistles (B558)



New design for '86.

WHISTLES (B558)

An intermediate sized rear pannier with a new, more functional design. The large main compartment and four exterior pockets per set provide plenty of cargo space.

Capacity per set: 1,825 cu. in.

Weight per set: 36 oz.

Price: \$85.00

Versatile and durable.

SWITCHERS (B043)

Use these all-purpose panniers front or rear. They'll fit most brands of low riding racks. Two flat pockets per set. Great for touring and commuting.

Capacity per set: 1,420 cu. in.

Weight per set: 47 oz.

Price: \$75.00

Switchers (B043)



SEAT BAGS

CARE INSTRUCTIONS

Cannondale bicycle bags are built to be extremely tough and durable. And by providing a minimal amount of care you can help ensure thousands of miles of use.

Ultraviolet light gradually deteriorates nylon. Therefore, you should avoid unnecessarily exposing your bicycle bags (and any other nylon products) to direct sunlight for long periods.

Do not leave opened food in your bags overnight. Raccoons and other critters get the munchies after dark and may chew through the pack fabric to get to the goodies within. It's best to suspend food off the ground, well out of reach of these bandits. (In bear country check with local rangers for food storage procedures.)

The best method for cleaning mild stains is to use a brush and soapy water on the bag. If the bag is filthy, remove all hardware and machine wash, then drip dry. Be sure to tighten all screws when reassembling. Applying a treatment of Scotch-Gard® (or similar product) after washing your bags will help them retain their water-repellency, as well as make cleaning easier next time.

If you have any questions about proper care for your Cannondale equipment, give us a call on our toll-free hotline: **1 800 BIKE USA**. (In CT, or outside the continental USA, call 1 (203) 838-4488.)

All Cannondale products are covered by our **100% guarantee of satisfaction**. If for any reason you are not happy with your Cannondale product, we will repair or replace it free of charge.

Bicycle Bag Colors. Unless otherwise noted, all bicycle bag colors are as follows: Blue, Ebony, Green, Plum, Red, Silver, Vibrant Blue.



Large Bumper (B032) and Compact Bumper (B409)

Roomy, stable and secure. **BUMPER (B032/B409)**

Packs a lot of gear. The wedge shape affords plenty of leg clearance, while the wrap-around zipper lets you slip tubular tires, tools and even a wind breaker in or out easily. Now in two sizes to meet your needs.

Large Size (B032)
Capacity: 165 cu. in.
Weight: 6 oz.
Price: \$13.99

Compact (B409)
Capacity: 110 cu. in.
Weight: 5 oz.
Price: \$10.99

Classic seat pack.

TOOT (B403)

A basic bicycle seat pack for carrying your cycling essentials. Attaches securely to your saddle in seconds with two cam-lock buckles and web straps.

Capacity: 215 cu. in.

Weight: 7 oz.

Price: \$10.99



Toot (B403)

Holds two sew-ups.

TIRE SOCK (B026)

Slim styling and two zippered side pockets highlight this lightweight seat bag. Carries up to two sew-up tires and keeps other essential tools handy.

Capacity: 70 cubic inches

Weight: 3 oz.

Price: \$10.99



Tire Sock (B026)

Handy tool pouch.

STOKER II (B044)

A mini tool and tube pouch that tucks neatly under your saddle. The belt loop allows you to carry the pack conveniently off your bike. Now made of water-repellent Cordura®.

Capacity: 30 cubic inches

Weight: 1 oz.

Price: \$6.50



Stoker II (B044)

MODULAR RACK, RACK PACKS

For the name and address of your local authorized Cannondale dealer where you can find all the latest Cannondale products, call our toll-free hotline: 1 800 BIKE USA. (In Connecticut or outside the continental USA, please call 1-203-838-4488.)

Super strong!

MODULAR REAR RACK (BR81)

Since its introduction, our patented (U.S. pat. #4,429,818) rear carrier rack has earned a reputation for its great strength and complete adjustability. This is the one and only fully adjustable, totally modular rack with four-point connection, so it will properly fit nearly any bicycle.

Weight: 17 oz.

Price: \$35.00

For mountain biking.

ATB RACK ADAPTOR KIT (A050)

Now you can put the super Cannondale rack to work on your off-road bike. This inexpensive adaptor kit allows you to properly mount your Cannondale BR81 rear rack to virtually any ATB. It will also help you mount our BR83 Ultimate Rear Rack to smaller size ATBs.

Price: \$2.50 (not pictured)



Lightweight rackpack.

FREIGHTER (B046)

A single compartment bicycle pack which fits on any conventionally sized rack. Attaches fast and easy with four hook-and-loop straps. A double-pull, wrap-around zipper makes it easy to get to the roomy interior compartment.

Capacity: 400 cu. in.

Weight: 6 oz.

Price: \$14.99 (not pictured)

Bicycle Bag Colors. Unless otherwise noted, all bicycle bag colors are as follows: Blue, Ebony, Green, Plum, Red, Silver, Vibrant Blue.



Modular Rear Rack (BR81)



Our rigid foam liner (pat. pend.) keeps food and beverages chilled. You can remove it for washing. And it protects fragile gear, such as camera equipment, from damage.

Multi-purpose panniers.

PORTERS (B407)

Moderately sized rear panniers at an economical price. Made with water-repellent Caprolan® nylon. Easy attachment: bags drape over rack and hook with shock cord to dropout. Great for books, workout gear...

Capacity: 1,020 cu. in.

Weight: 31 oz.

Colors: Blue, Ebony, Red, Yellow

Price: \$19.99



Porters (B407)

Picnic luggage...

CABOOSE (B047)

Our rigid foam insert (pat. pend.) keeps foods chilled for picnics. It also protects fragile gear like binoculars. The Caboose holds a lot of gear and its web handles and attachable shoulder strap make it a great gym bag or camera case. Mounts quickly to your bicycle rack with hook-and-loop straps.

Capacity: 800 cu. in.

Weight: 32 oz.

Price: \$55.00



Caboose (B047)

Keeps 'em cold.

BOXCAR II (B551)

An insulated rack pack with a difference. The rigid foam insert (pat. pend.) is sturdy enough to stand on. Keeps beverages cold or protects your valuable camera equipment. Web handles. Easy hook-and-loop attachment.

Capacity: 330 cu. in.

Weight: 26 oz.

Price: \$29.99



Boxcar II (B551)

BICYCLE TRAILER, TRUCK RACK

Turns your bike into a station wagon.
THE BUGGER III (B003)

Thousands of Cannondale customers have extended the usefulness of their bikes with our Bugger III bicycle trailers. They rely on the Bugger to carry children, camping equipment, groceries and other cargo on anything from cross-country tours to short errands down to the hardware store.

CARRY 80 POUNDS EASILY

The Bugger III reflects our 15 years of experience building bicycle trailers. It enables you to pull up to 80 pounds without significant extra effort. Your ride will be extremely stable and smooth thanks to the basic design of the uni-body chassis, the unique torsional hitch, the low center of gravity, and sturdy 20" wheels with sealed bearing hubs.



Bugger Canopy (A084)

Bugger III (B003)



TAKE ALONG THE KIDS

Children love being taken along for the ride in a Bugger III. The chassis is anatomically designed to comfortably seat one or two children up to 40" tall. They sit facing rearward, protected from road debris the bike or passing cars may kick up. The high back supports their heads while built-in guards protect them from turning wheels. The waist and shoulder harness features child-resistant buckles and keeps children from climbing around while you're underway.

The Bugger III attaches quickly, easily and securely without tools to nearly any bicycle with a 20" or larger frame. Its polypropylene hitch clamps to your seatpost with just a flick of the steel toggle latch. There are no permanent attachments on your bike.

The Bugger III is now available in a bright yellow color for optimal visibility.

Weight: 25lbs.

Cargo Limit: 80 lbs.

Colors: Ebony, Yellow

Price: \$250.00

Keeps 'em dry.

BUGGER CANOPY (A084)

Protects Bugger III passengers and cargo from elements. Water repellent nylon. See-thru plastic windows. Lightweight fiberglass poles. Double zipper opening door. Aerodynamic shape. Fits all existing Bugger III models.

Color: Yellow

Price: \$69.99

Extra comfort.

BUGGER CUSHION (A033)

Give your passengers an easier ride, cushioned with this closed-cell foam pad. It installs easily and securely with self-adhesive hook-and-loop tabs.

Color: Brilliant Yellow

Price: \$16.99 (not pictured)

Now carry your bike safely.

TRUCK BICYCLE RACK (A105)

Turn your pick-up bed into a bicycle carrier with our new truck bicycle rack. It comes with two fork clamps so you can safely carry two bicycles upright in the back of your pick-up. Add more clamps and carry up to five bikes (depending on the size of your truck).

Now you no longer have to worry about chipped paint due to a bouncing bicycle. Our rack holds it firmly. And with our optional wheel bracket, you can hold the front wheel securely too.

Whether you're traveling to the country for a day of off-road riding. Or going to the state criterium championships. You won't have to worry about damaging your bicycle again.

A105N—fits trucks with beds from 54" to 60" in width

A105W—fits trucks with beds from 60" to 66" in width

Price: \$39.99

A105A—optional wheel bracket

Price: \$9.99

A105B—additional fork clamps

Price: \$9.99



Truck Bicycle Rack (A105)

BICYCLE ACCESSORIES

Hi-pressure, framefit...

BICYCLE PUMP(A106)

Our new high pressure bicycle pump is made for us by one of the leading European pump manufacturers. It nestles snugly along either your top tube or seat tube. The plastic barrel and alloy plunger make this one of the lightest pumps on the market. It comes with a press fit, presta head and an adaptor that allows use on Schrader valves. Comes in five sizes to fit virtually every size bike.

Color: Ebony

Sizes: 1, 2, 3, 4, 5

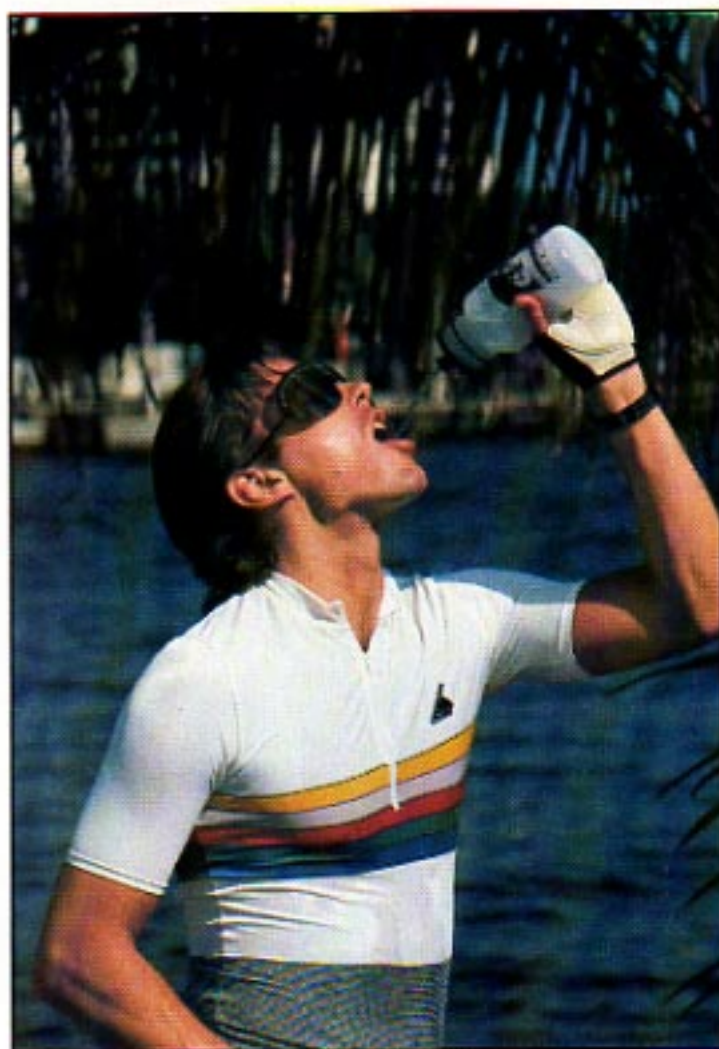
Price: \$9.99

Wide mouth for easy cleaning.

CONVENTIONAL WATERBOTTLE (BH30)

Due to popular demand we've produced a standard bicycle waterbottle with the same wide mouth and lid as our hook-and-loop mounting waterbottle. It has a large capacity of 20 fluid ounces and fits any normal sized cage. Made of tough, FDA-approved polyethylene.

Price: \$2.50



Bicycle Pump (A106)



BH30 and waterbottle cage (BH60)



BH20B



BH20

Lightweight and strong.

WATERBOTTLE CAGE (BH60)

Our waterbottle Cage is constructed with solid aluminum rod, making it lightweight and strong. It can be attached to your bicycle directly to braze-on mounts, or to bicycles without braze-ons with our special clamp kit. Painted with a rich DuPont Imron finish.

Colors: assorted

Price: \$4.99

Clamp Kit (BH61)

Price: \$1.50

Refreshment is always in reach.

THE CANNONDALE WATER BOTTLE (BH20/BH20B)

Our large volume, patented waterbottle (U.S. pat. #4,345,704) makes taking a drink while riding easy. Just lift the bottle off the base for quick refreshment. Then place it firmly back. The Scotch-Mate® hook-and-loop material holds the bottle securely in place. The bottle has a wide mouth for easy cleaning and mixing of powdered drinks. It is available with either a wrap-around

or braze-on type base. 24 fluid ounce capacity. FDA approved polyethylene.

BH20 — Bottle with Wrap-around Mount
Price: \$9.99

BH20B — Bottle with Braze-on Mount
Price: \$10.99

Super Lube®

Protects your bike and keeps it running smoother.

SUPER LUBE® BICYCLE LUBRICANT

Super Lube® is a clear, all-purpose penetrating lubricant that has proven to be the finest bicycle lubricant available. To start with, the Super Lube® formulation of Teflon® and synthetic grease is a patented process, which actually repels dirt and water. Super Lube® has excellent adhesion and will not drip or run. This means it goes on cleanly and stays in place to provide long-lasting lubrication on chains, bearings, cables and derailleurs. Super Lube® prevents rust and corrosion, and reduces friction. It remains unaffected by temperatures ranging from -65° F to +650° F. Super Lube® contains no petroleum distillates, so it is non-toxic and environmentally safe. And it won't stain your clothes.

Super Lube® is available as an aerosol for cable, chain and derailleur applications, or as a gel for cable and bearings.

3 oz. Tube (L003)—\$3.99
1/4 oz. Oiler (L014)—\$3.99
4.5 oz. Aerosol (L045)—\$3.99
11 oz. Aerosol (L011)—\$5.99



Saddle Cushion (BC79) and Lycra Seat Cover (BC78)



Sheepskin Seat Cover (BC75)

Cushion your saddle for comfort. **SADDLE CUSHION (BC79)**

Our new lycra-covered saddle cushion makes those long training rides more enjoyable. The neoprene is a soft barrier between you and the saddle for miles of cycling comfort. We've tapered the neoprene specially to hug your saddle for a great fit. And the drawstring allows you to keep the cushion in place all ride long.

Colors: Ebony, Fuchsia, Red,
Vibrant Blue

Price: \$19.99

A splash of color for your bike. **LYCRA SEAT COVER (BC78)**

Now you can add some zip to the graphics of your bike with one of our flashy new lycra seat covers. Match the color of your handlebar tape. Or match your panniers. Get several and give your bike a different look each time you ride. Our lycra seat covers are guaranteed to make your bike look faster.

Colors: assorted
Price: \$2.99

Sit soft in the saddle. **MERINO SHEEPSKIN SEAT COVER (BC75)**

Increase your comfort in the saddle with a Cannondale Merino sheepskin cover. Our Merino wool will give you a cooler ride with less chafing in warm weather, and a warmer ride when the temperature drops.

Small (racing and touring saddles)

Price: \$14.99

Medium (wide spring saddles)

Price: \$16.99

Large (large exercise saddles)

Price: \$22.99

KNAPSACKS

Polyfoam liner makes it comfortable.

STACK (C550)

A lightweight, economical daypack now made from tough, water-repellent Cordura® nylon. Features include comfortable web shoulder straps, flat exterior pocket, and a removable polyfoam liner that cushions contents, prevents excessive fabric wear, and keeps hard edges from your back.

Capacity: 750 cu. in.

Weight: 13oz.

Colors: Blue, Ebony, Green, Plum, Red, Silver, Vibrant Blue

Price: \$19.99

Versatile and rugged.

HOBO (C499)

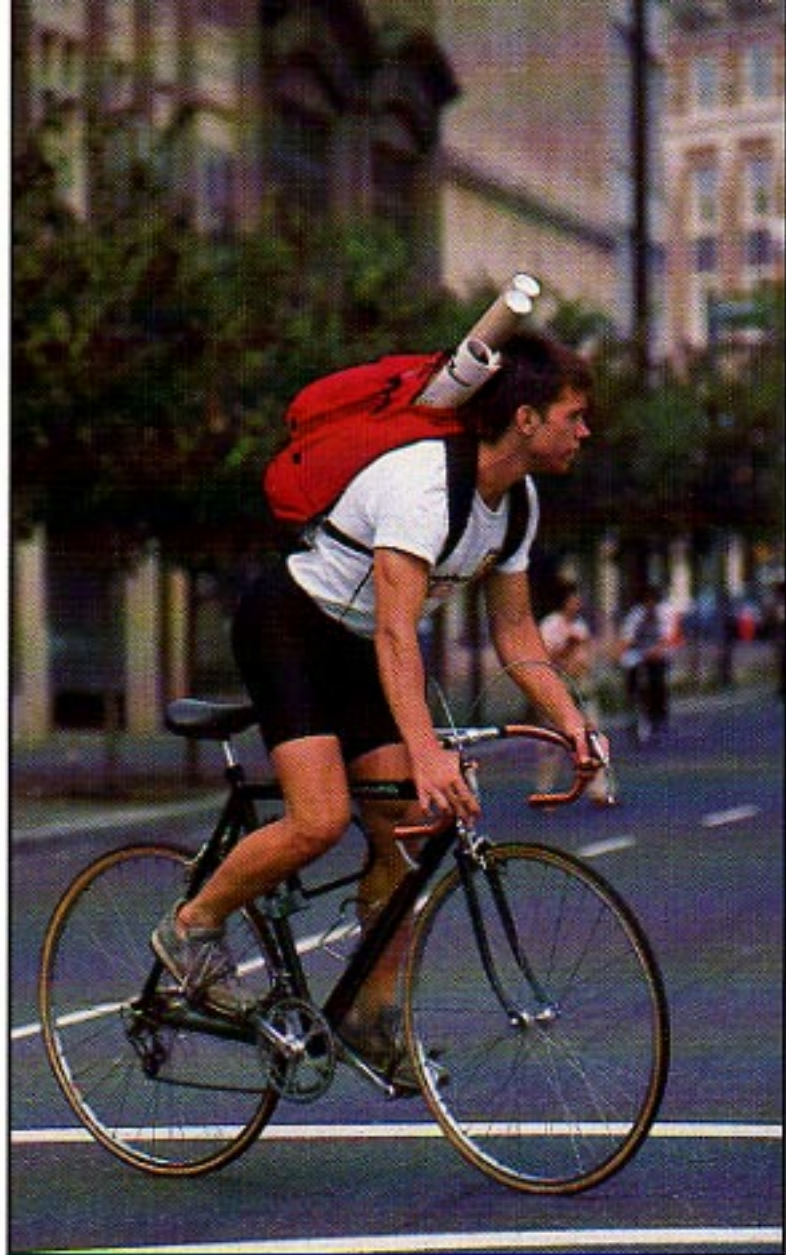
A comfortable companion at school or in the wilderness. The Hobo is now made from nylon Cordura® and features a roomy outer pocket, padded shoulder straps and Cannondale's removable polyfoam liner.

Capacity: 850 cu. in.

Weight: 15 oz.

Colors: Blue, Ebony, Green, Plum, Red, Silver, Vibrant Blue

Price: \$25.00



Stack (C550)

Hobo (C499)

Dispatcher (C859)

For climbing and camping.

DISPATCHER (C859)

A rugged, versatile daypack made with nylon Cordura® and featuring padded shoulder straps, two outside pockets, ice axe loop, leather lash patches, and Cannondale's removable polyfoam liner. The Dispatcher is a superior all-purpose back pack.

Capacity: 950 cu. in.

Weight: 16 oz.

Colors: Blue, Ebony, Green, Plum, Red, Silver, Vibrant Blue

Price: \$35.00

Padded for comfort.

FANNYPACK (C846)

Ideal for toting essentials on day hikes, ski tours, and mountain bike rides. Our fannypack is made with nylon Cordura® with a large main compartment that is padded to cushion contents and protect your back from hard edged gear. Other features include a roomy exterior pocket, quick release waist buckle, and leather wrap-around reinforcements.

Capacity: 300 cu. in.

Weight: 8 oz.

Colors: Blue, Ebony, Green, Plum, Red, Silver, Vibrant Blue

Price: \$19.99



Fannypack (C846)

SLEEPING BAGS

Rest well in a modified mummy sleeping bag from Cannondale. There are three models to choose from, each in regular size and extra long. We combine quality materials with innovative and careful construction to wrap you in cozy comfort even down to 20 below.

THE FINEST MATERIALS

It starts with the insulation we use — pure Dacron® Hollofil® II, which provides more insulation with less weight than solid polyester fibers. And because it's synthetic, Dacron® Hollofil® II maintains its loft even when wet, a condition that would render an expensive down bag useless.

The outer shell of a Cannondale sleeping bag is made from 1.9 oz. ripstop nylon for lightness and tear-resistance. The inner shell is soft, cottony Antron® nylon. Full-length, two way YKK nylon coil zippers are protected with an insulated nylon tube to eliminate chilly drafts.

For summer cycling. **BLUE RIDGE RIDER** (S804/S805)

Made for summer and moderate spring and fall use with two layers of insulation, instead of three, for especially light weight.

S804 — 6 foot length

Weight: 3 lbs./8 oz.

S805 — above 6 feet

Weight: 3 lbs./13 oz.

Temperature Rating: 25° F

Loft: 4"

Colors: as available

Price: \$79.99 (not pictured)

Three-season versatility. **CHEASAPEAKE (S806/S807)**

A full three season bag with a wrap-around collar that keeps chilling drafts off your chest. Triple layer construction.

S806 — 6 foot length

Weight: 4 lbs./14 oz.

S807 — above 6 feet

Weight: 5 lbs./4 oz.

Temperature Rating: 5° F

Loft: 6"

Colors: as available

Price: \$109.99 (not pictured)

Beats the cold. **GREAT NORTHERN** (S808/S809)

Built for cold weather camping with a wrap-around draft collar and full sculpted hood for super warmth. Triple layer construction.

S808 — 6 foot length

Weight: 5 lbs./12 oz.

S809 — over 6 feet

Weight: 6 lbs./8 oz.

Temperature Rating: -20° F

Loft: 8"

Colors: as available

Price: \$129.99

CAREFULLY CRAFTED DESIGNS

We use three key design features to make Cannondale sleeping bags superior to other bags. **DIFFERENTIAL CUT:** The inner shell is smaller in diameter than the outer shell, which allows the bag to maintain its full loft. **OFFSET QUILTING:** The quilting is staggered to eliminate heat loss due to sewn-through seams.

TRIPLE LAYER CONSTRUCTION: Three separate layers of Dacron® Hollofil® II are used: one sewn to the outer shell, one sewn to the inner shell, and a third layer sandwiched between. This construction assures that you will always have plenty of insulation between you and the cold outer air.



Great Northern (S808/S809)

CANNONDALE TENTS

Extra light and compact.

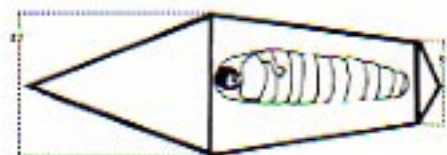
BIKE TOURING TENT (C890)

This ultralight tent is a great personal shelter, and will even sleep two in a pinch. We use urethane-coated 1.9oz. ripstop nylon throughout, and a wide strip of No-See-Em-Proof netting that runs the length of the main canopy to permit air circulation and a star-gazer's view. When rain threatens, pull the waterproof fly across from the front pole arch and snap it to the rear. Set-up is quick with two stakes and shock-cord loaded fiberglass poles. A vestibule protects the entrance. In its stuff sack the Touring Tent fits compactly on a rear carrier rack.

Stuff Size: 16" X 5"

Weight: 3 lbs./4 oz.

Price: \$114.99



Spacious comfort.

WABASH TWO PERSON TENT (C891)

Sleek, tapered profile. Plenty of room for two people and all their gear. A spacious vestibule covers the entrance, while the rear window is protected by an overhanging canopy. Our most popular model.

Stuff Size: 24" X 10"

Weight: 8 lbs./12 oz.

Price: \$299.99



Double vestibules.

AROOSTOOK THREE PERSON TENT (C893)

A great base camp and kayaking tent, the Aroostook comfortably sleeps three to four people. It features two entrances and two giant vestibules.

Stuff Size: 24" X 7 1/2"

Weight: 11 lbs./4 oz.

Price: \$324.99



Photograph by Joseph Kugielsky



Foreground: Bike Touring Tent (C890). Background left: Aroostook (C893). Background right: Wabash (C891).

A tent is your home in the wilderness. It must shelter you from wind, rain, snow and cold. It must be roomy and set up quickly and easily.

Cannondale integral fly tents (C891/C893) have proven their ability to provide these vital functions in some of the world's harshest environments. The fly on Cannondale tents is actually an integral part of the tent. This design gives you several advantages.

Easy set-up—Cannondale tents go up quickly and easily. Just assemble the two shock-cord loaded aluminum poles, slide them into their respective sleeves, and put a stake in at each end. And the tent is up. Completely. It's that simple. That fast.

Warmer—A Cannondale tent is a sleek, functional unit. The pole sleeves are sewn into the outer wall (our integral fly), while the inner wall is suspended below. This creates a 6" layer of dead air insulation that keeps the living area warmer.

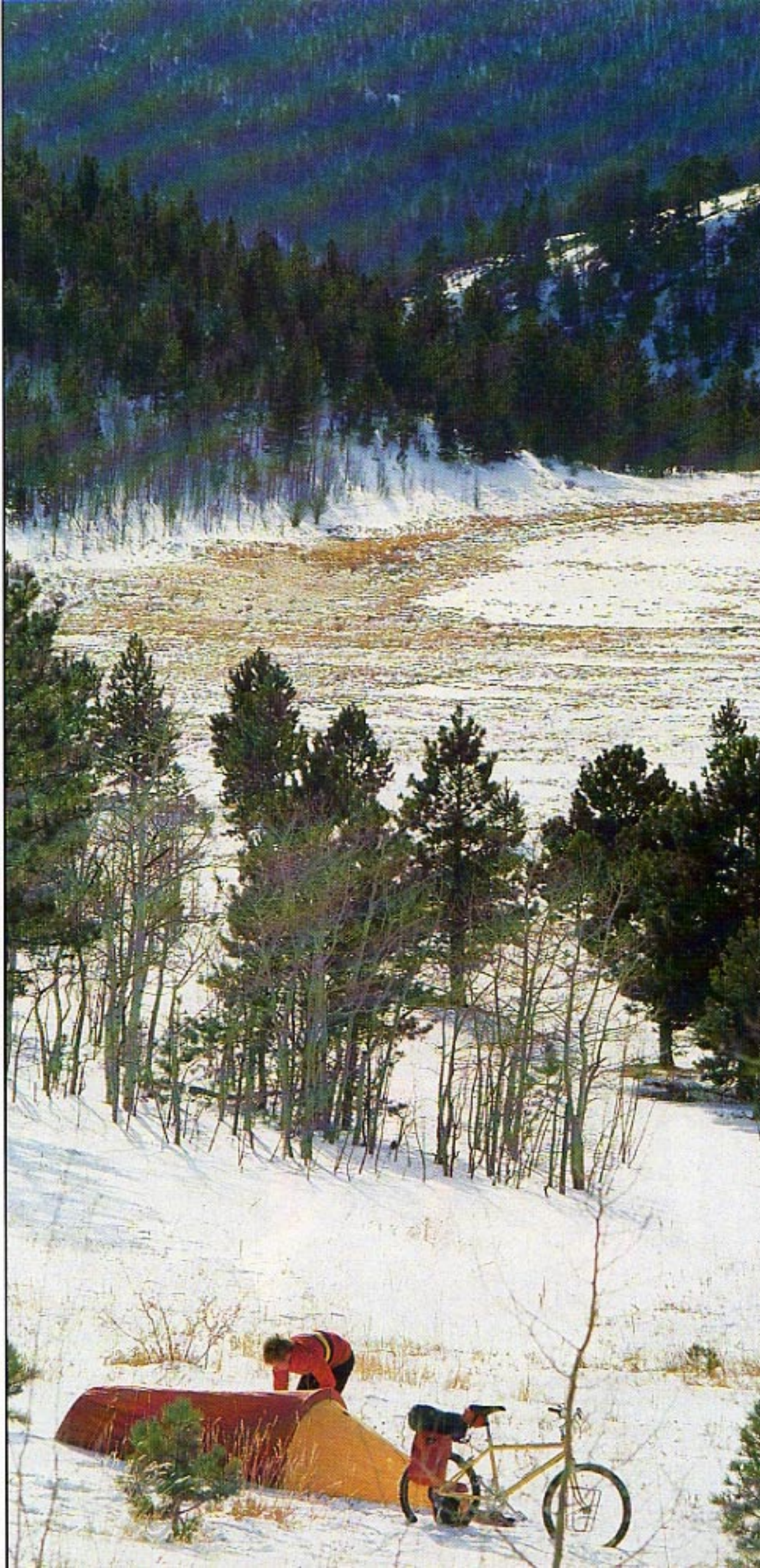
Weatherproof—The integral fly is made with urethane-coated 1.9 oz. rip-stop nylon to efficiently shed rain. The inner wall is breathable 1.5 oz. ripstop nylon, which allows moisture given off by occupants to escape. Tent floors are urethane-coated 1.9 oz. nylon and feature a tub design with elevated corners to keep runoff out of your sleeping bag.

In addition, the aerodynamic shape, integral fly, and sturdy construction make Cannondale tents extremely resistant to high winds that would buckle an ordinary tent.

Spacious—Every Cannondale tent features a roomy vestibule over each entrance. A vestibule is a floorless transitional shelter that protects you from a driving rain while you remove your muddy boots and clothes. It also provides plenty of storage space for packs, keeping the living area free for uncramped sleeping.

Quality construction—Cannondale tents feature the finest materials and quality craftsmanship. Seams are lap-felled and double-sewn at eight stitches per inch with cotton-wrapped polyester thread, which is strong and swells when wet to seal seams further. All stress areas are reinforced with webbing or bartack stitching. We use only YKK nylon coil zippers, the most reliable outdoor zippers around.

Photograph by Viggio.





BULK RATE
U.S. POSTAGE
PAID
CANNONDALE
CORPORATION



No flimsy "give-away."

**CANNONDALE
CYCLE HAT (H100)**

An attractive, colorful cycle hat made of quality materials and featuring a stiffened bill and elastic back band. One size fits all.

Color: White

Price: \$7.99

Show your colors!

CANNONDALE T-SHIRTS

Our Tees are colorful and feature exciting new graphics. No cyclist, serious or otherwise, should be without one.

Colors: as available

Sizes: P, S, M, L, X

Short Sleeve (T200)

Price: \$8.99

Long Sleeve (T300)

Price: \$11.99

