



CO-MOTION CYCLES 2007





## CO-MOTION CRAFTSMANSHIP

**A pair of skilled hands** turns the handles of a custom-made bottom-bracket facing tool. Nearby, the sound of a single strap of emery cloth polishing and gently shaping a brazed joint can be heard. To the left, the slow pulsing flash of a carefully controlled TIG welder. A few steps away, mill and lathe operators execute the precise cuts that make our custom-drawn butted tubing into the integral parts of a *Co-Motion* bicycle frame. Just beyond, skilled artisans carefully take turns preparing each frame for paint, or painting in multiple stages in our world-class downdraft booth.

**Craftsmanship—it's a work ethic** and a philosophy that's often touted but seldom adhered to elsewhere. Producing the finest bicycles in the world isn't about automation. We believe craftsmanship defines the

personal connection between our bicycles and ourselves. Our commitment to the hard work and to the details of making better bicycles is evident not only in our bicycles, but in the people who work here as well. A visit to *Co-Motion Cycles* illustrates our open and honest style. We take pride in what we do because we know we're doing it right.

**Our people show great pride in their work.** Andrew Lillibridge (1): welding wizard. Ben Renich (2): mitering master. Buck Olen (3): brazing torch bearer. Billy Truelove (4): CNC machine magician. Bob Westman (5): the original "Brazin' Hussy." Mick Coleman (6): paint professor. Tony Sivesind (7): welding machinist. Eric Dungey (8): bike painting "Mr. T." Matt Goodban (9): expediting expert. Elayne Goodban (10): she sells so well. Dwan Shepard (11): bike designer/owner. Dan Vrijmoet

(12): shop overseer/owner. Kent Peterson (13): mischievous marketeer. Dick Stanton (14): books boss.

At *Co-Motion Cycles*, **turning ideas into bicycles** is more than just giving someone an order. The bicycles we take pride in reflect a logical progression of bicycles from our past experience—from the bicycles we ride ourselves to those we build for our customers. Like many other framebuilders, we began by building a few custom bicycles for our friends. As time went on, we developed new bicycle models based on what our customers were ordering. We tracked our fitting data, and paid attention when customers asked to change an angle here or there, or sought out improved components and innovations. Without question, our customers are the greatest influence on the continuing evolution of the bicycles in this catalog.







**The Co-Motion Tandem difference** We have long enjoyed a reputation for building tandems that simply handle better as we work relentlessly to improve tandem design using better materials and construction methods while integrating the latest components to help you get more out of tandeming. Precision handling isn't just more fun—it makes our tandems safer and easier to control. A sluggish-handling bike might lull you into a false sense of security, but when it comes to avoiding obstacles, or executing a perfect mountain descent, no tandem will respond like a *Co-Motion*. Experienced cyclists find that they don't have to relearn bike handling, while new cyclists find that riding a *Co-Motion* tandem is easier than they ever imagined.

### Can your Co-Motion tandem read your mind?

Your *Co-Motion* always seems to know exactly where you want to go because our tandems never require over-steering, with excellent tandem forks for every model. Our hand built Cro-Moly tandem fork provides superb lateral rigidity and a smooth ride. The *Co-Motion/WoundUp* carbon tandem fork is designed to fit *Co-Motion* road tandem geometry and makes a great upgrade. Making the most of the incredibly light, superb-riding new Alpha Q X-2 tandem fork means specially designed geometry, incorporated into our weightless new *Macchiato*, the zippy new *PeriScope* *Hammerhead* and our renowned and freshly redesigned *Robusta* and *Supremo* race tandems. Better handling isn't simply a formula. We bring into harmony

intelligent design, *Co-Motion*-exclusive materials, and thoughtfully selected components to achieve the superior handling and better fit that make the tandems in this catalog unmistakably *Co-Motion*.

Relax. You're in control. Better control means you can relax and enjoy the ride. Confidence in your bicycle will make you a better cyclist, whether you're stoking or captaining. When you know that your tandem will do exactly what you ask, you'll be able to relax your upper body, let your spine flex and respond as you ride, and loosen your grip on the handlebars. Because you'll expend less energy on control, you'll have more to invest in pedaling. It's no wonder a *Co-Motion* feels easier to ride.



## CO-MOTION TANDEM FEATURES

### Better Tubing

The tubing that your tandem is constructed from plays a huge role in its behavior. We have engineered every *Co-Motion* tandem tube to deliver a comfortable ride while demonstrating incredible lateral rigidity. Every tube, from the tapered chainstay to the double-buttressed downtube is thoughtfully profiled for optimal tandem application. Our continuous length top and lateral tubes are butted at both ends as well as in the center section, an expensive and complex zone-by-zone butting process.

Our *Speedster*, *Mocha* and *Supremo* tandem models are built with our improved tandem tubeset made from our own exclusive zonally-buttressed Reynolds 631 tubing. This air-hardening tubing has considerably higher tensile strength and fatigue life, resulting in a lighter, stronger frame.

For our *Co-Pilot Option S+S* Coupler-equipped models, we have profiled each tube to better support the installation of S+S Bicycle Torque Couplings. No other company has gone to the extremes we have to design the bicycle around the S+S coupling and improve travel-ability. All of our tube designs are exclusive to *Co-Motion* and unavailable to other manufacturers.

Our *Roadster*, *Robusta*, *Macchiato* and *Hammerhead* aluminum tandems are made from newly redesigned zonally-buttressed ACMUltra 7005 tandem tubing. We have created better riding, lighter weight and more precisely constructed aluminum tandems than you've seen before by using continuous large-diameter top and lateral tubes, rather than bulged or two-piece tubes. Our ACMUltra 7005 tandem tubeset's positionally-specific tubes allow further removal of unnecessary weight.

Beware of misleading information about butted tubing. Some tandem makers claim to be the only ones using double-buttressed tubing. If you count the number of wall-thickness zones, our tandem tubes would be considered quint-buttressed. Interestingly, our zonally-buttressed tube profiles are asymmetrical, since the stoker and captain departments are quite different. We use the term zonally-buttressed because it clearly defines the intention of bicycle tube design, which is to reinforce the tubing at each intersection, while lightening the less stressed zones in between, improving the ride of the bicycle.



### Hub-Mounted Brake Options

Disc brakes have come a long way in recent years, and we've found the Avid Mechanical disc—standard on many of our tandem models, and optional on most models—to be an extremely reliable and outstandingly powerful option as an alternative to standard rim brakes. Many people prefer a disc brake because the brake's friction will not overheat rims in extreme conditions.

The Arai Drum Brake is the only brake we recommend as a supplemental drag brake. An Arai drum brake can be fitted in addition to the standard rim brakes, and is an excellent choice for tandem touring, heavier couples, or mountainous terrain. As a third brake, the Arai drum allows excellent braking using the rim brakes, and good heat dissipation and speed control for long, difficult descents. The Arai drum brake is part of our touring package, or it can be ordered separately.



### Finish Work

Nothing compares with a *Co-Motion* in the finish quality department. Perfect metalwork, precise machining, and impeccable detailing are expected on a *Co-Motion* bicycle, and we deliver. Ask any *Co-Motion* owner, or better yet, take a close look at the finer details of one of our bicycles for yourself.



### Paint

*Co-Motion* is known for exceptionally beautiful paintwork. Other bike manufacturers have been known to visit our facility and marvel at the space we've dedicated to our two downdraft paint booths, where our certified PPG paint technicians complete a multi-stage, catalyzed process on each frame for a tough, long lasting finish. For a personal look, you can choose from our 45 paint colors on page 31 or select from infinite custom finish options, many of them pictured on our website.



### Wheels

Our 145mm rear axle spacing is the standard of the tandem industry, allowing plenty of room for 9 and 10-speed wide-range cassettes, excellent chainline, and hub-mounted brakes. Symmetrically constructed wheels assure a lifetime of solid performance.

### Contoured Stays

For improved tire and heel clearance, our custom seatstays and chainstays are gracefully curved (above).







FAMILY



TOURING



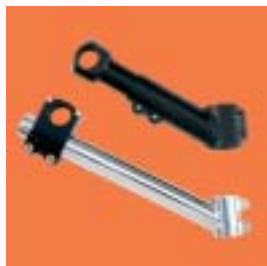
RACING



SUITCASE TRAVEL

## Fillet Brazing

Beautifully executed craftsmanship. We have made a name for ourselves as some of the industry's finest craftspeople with our glass-smooth fillet brazing. If you would like to add the elegance of fine fillet brazing to your *Co-Motion*, we now offer this option on any of our Cro-Moly and air-hardening steel models.



## Stoker Stem

Our new lightweight standard aluminum adjustable stem allows for about 2.5cm of adjustability (above, top).

Our optional Max-Adjust stoker stem (above, bottom) provides more range of adjustment than any other type with a full 18cm of range.

We also offer a Max-Adjust captain's stem, a great choice for a *PeriScope* tandem. All three stems are built with the emerging 31.8 handlebar standard for improved rigidity and safety.

## Better Parts

We go to great lengths to select the most appropriate parts for our tandems. We strive to use components on our models that are in common use throughout the bicycle industry, and understood by any mechanic at your local bike shop, like 1-1/8" head tube diameter. Our component selection will never leave you stranded.

For those parts that are truly unique to tandems, not only have we worked with our suppliers to integrate the latest innovations in componentry like external bottom bracket bearings, hollow crank spindles and 10-speed cogsets, we are always exploring our own solutions to tandem componentry and frame design in house.

## We Make Fitting Easy

With more stem choices than any other tandem maker, we help you get positioned comfortable and efficiently. Anatomical bend handlebars prevent fatigue by providing more places to place your hands, while helping you reach the controls with ease.

## Better Forks

A key element to making *Co-Motion* tandems handle better is our superbly engineered forks. With several choices available for the many kinds of tandems we offer, every frame is designed specifically for the fork it is paired with.

The excellent *Co-Motion* Cro-Moly fork that guides many of our tandems is designed and built right here to suit the kind of handling and longevity we believe is right. Our exclusive precision-machined steerer tube makes a superb foundation for our custom drawn tandem fork blades, shaped for excellent road compliance with ideal lateral rigidity. Our straight-bladed disc fork features our own CNC-machined disc dropout, designed to distribute braking loads over the length of the fork for improved rigidity and flawless alignment. *Co-Motion* uses the industry-standard 1-1/8" steerer so nonstandard parts are never an issue.

The *Co-Motion/WoundUp* carbon fiber tandem fork was the first composite fork made specifically for tandems. Our goal in this joint project was prioritizing safety and strength, while achieving significant weight loss. The smooth, vibration-damping carbon ride makes a great upgrade, this fork is compatible with most tandem frames equipped with 1-1/8" steerer tubes. It is made in three versions: one for caliper brake mounts, one for linear-pull or cantilever brakes and a disc-brake version called the Duo. Whether you're upgrading the tandem you already own, or your new *Co-Motion* tandem, we've got the right fork for you.

This year, we've integrated Alpha Q's new X-2 fork into the design of our *Robusta* and *Supremo* models, as well as the new *PeriScope Hammerhead* and *Macchiato* tandems. The incredible X-2 is exceptionally light, yet stronger than Alpha Q's earlier tandem forks. Because its geometry is much different (short profile, caliper bakes only, fits tires no larger than 700x 28) the X-2 is not available as an option on other models.





Great Co-Motion tandem handling at an equally great price. Painted in Champagne to Light Blue Metallic fade.

## PRIMERA CO-PILOT



This full-sized *Primera Co-Pilot* tandem travels for free with the Co-Pilot option. Painted with our optional HOK Cherry Pearl.

If you're looking for a tandem, you may already have found that it doesn't take long to become overwhelmed by the choices. It's tempting to buy a tandem from a big-name bike company. But you'll find that a *Co-Motion* tandem will reward you many times over for just a little more.

The heart and soul of a tandem is its frame, and like all *Co-Motion* tandems, the way we build the **Primera** is innovative and undeniably better. We use continuous top and lateral tubes made precisely to our specifications to build a stronger and straighter tandem. The result is an incredible performer that no mass-produced frame can match.

To help you get the most from your *Primera*, we include fittings for water bottles, racks, and fenders. *Co-Motion Cycles'* reputation for the best handling tandems is upheld with our unbeatable geometry and hand built *Co-Motion* tandem fork. The *Primera* is ready to take on loaded touring, but you can really feel the racing in its blood when you're spinning together smoothly on a long strip of pavement.

You'll benefit from our experience as the top maker of premium tandems in the component selection as well. We have specified proven tandem components from the industry's best manufacturers to add even more value. It's the thoughtful details like these that will enhance your pride of ownership in a genuine *Co-Motion*. And since the *Primera* is made to last a lifetime, you'll have the peace of mind that you've made an intelligent choice for years to come.







If you're thumbing through our catalog, looking for the tandem that looks like the *Speedster*, except that it's got 26" wheels, you've come to the right page.

We've newly redesigned the **Mocha** with a lower profile fork and trimmed clearances to make it a better road bike with improved fitting range for a wider array of riders. The refitted *Mocha* will accept tires ranging from 1" to 1.75" wide, offering great versatility for a wide range of uses. The *Mocha* is not a mountain bike, but it can venture off into the back country capably when called upon. Loaded down with everything you need on a self-contained tour, the *Mocha* really shines. Its smaller diameter 26" wheels are amazingly strong, and many people also prefer them for their worldwide availability and even for the reduced gear ratios due to their size.

The *Mocha's* design and geometry exhibits the handling theory that is *Co-Motion's* trademark. You've heard that our tandems handle better, and the *Mocha* is no exception. It responds to rider input naturally and without hesitation, giving you extra confidence to push yourselves just a little harder, and have a lot more fun!

Continuing our tradition of uncommon excellence, we build the *Mocha* with our exclusive *Co-Motion* designed zonally-buttressed tandem tubing. Special processing makes this air-hardening steel tubing stronger after welding, for an amazing combination of low weight and unmatched reliability. The *Mocha* has everything you need to take it touring this weekend and to your club ride or tandem rally next. Add the *Co-Pilot* option and take it to the moon if you'd like. Wherever your *Mocha* takes you, we'll be right there with you.



Well equipped and looking sharp with Mango paint, the *Mocha* has excellent curb appeal.

## MOCHA CO-PILOT



With a White Mica to Bright Silver paint job, this is a very smooth *Mocha*.



Painted with a glorious HOK Kamelion Poison Green finish, this *Speedster* is ready for its next adventure.

## SPEEDSTER CO-PILOT



S&S couplers make traveling with your favorite tandem a snap. In luscious HOK Lake Violet Blue.

When you ride a ***Speedster***, you'll experience *Co-Motion's* quantifiably better control that other tandems simply lack. Our advanced design and unmatched construction may make you forget you're on a tandem at all. The *Speedster* steers nimbly and quickly, and better still—the precision handling that *Co-Motion* tandems are famous for equates to better safety. This tandem is remarkably lightweight and fun to take up long climbs, yet rock solid and stable on winding descents.

*Co-Motion's* unmatched ride quality is the foundation of our tandem reputation, and we believe in packaging it with beautiful workmanship and finish. No one wants to invest in a machine as well developed as the *Speedster* without reaping the aesthetic rewards that *Co-Motion* owners expect. Super precise TIG welded joints, impeccable finish details, and show-quality custom paint are all yours to enjoy even when you don't have the time to take a ride.

The *Speedster's* frame is constructed with our exclusive Reynolds air-hardening steel tandem tube package, a Cro-Moly steel unequaled by any steel alloy used by other tandem manufacturers. As on all *Co-Motion* models, one-piece top and lateral tubes keep the frame straight and strong with no interruptions at the center joints. These zonally-butt tubes, made to our stringent specifications, produce a lighter better tandem. The result is that the *Speedster* delivers a ride that is crisp and comfortable at the same time.

A roomy stoker compartment, simple sizing system, and numerous stem selections for captain and stoker make a great fitting tandem a reality for just about any team. The *Speedster's* high level of component specifications will leave you completely satisfied that you own one of the best tandems the world has to offer. And the good news is: you'll be absolutely right.





The era of a pleasant open-air tour through the countryside with the top down is back, only now it's on a *Co-Motion Roadster* tandem. Like the classic, this two-seater *Roadster* feels equally at home for a weekend in the country or negotiating tight downhill turns on the Pacific Coast Highway.

*Co-Motion* tandems have always been famous for superb road manners and the *Roadster's* great performance comes from years of thoughtful change and refinement. You've worked hard over the years to refine your cycling skills and the *Roadster's* perfect balance of handling and comfort will reward you for your efforts.

The *Roadster's* clean lines and unmatched architectural strength are enhanced by our new ACMUltra7 Aluminum zonally butted, one-piece top and lateral tubes. Elegantly contoured oval-tapered chain stays and shapely seat stays are intelligently engineered to keep the ride comfortable, while enhancing power transfer. Finishing off this impressive package is our matchless *Co-Motion* fork, making this *Roadster* lively, precise and best of all, fun.

With the versatility to choose from our touring package or select racing components the *Roadster* is truly a multi-performance tandem worthy of the *Co-Motion* name. Dress up your *Roadster* in one of 30 stock color selections, or go with classic British Racing green. Wire wheels no extra charge.



In beautiful HOK Sherwood Pearl with a WoundUp carbon fiber fork. 33 pounds of fun.



Maureen and Arthur Wood riding the Tour de Cure.

## ALUMINUM AGING

Every *Co-Motion* 7005 tandem is put through an artificial aging process to strengthen the aluminum. This technique reintegrates the alloying elements, aggregated from the welding process, back into the crystalline structure of the tubing.





With Co-Motion's Starry Night paint scheme and equipped with all of the latest carbon goodies.

## SUPREMO CO-PILOT



The classiest travel tandem out there, featured here in a Bright Silver to Pewter Grey to Metallic Black fade.

There really are no other contenders when it comes to the lightest, most competitive and best performing tandems. The fact that *Co-Motion* makes some of the best performing tandems in the world is no secret. That our groundbreaking 30 lb. **Supremo** is built on a steel frame exemplifies our commitment to pushing the envelope further.

You'll have to look at tandems made from exotic metals or carbon to find a tandem as light as our new *Supremo*—matching its performance or the artistry of its construction is completely out of the question. We've spent years perfecting the *Supremo's* geometry, balance, and its super-strong Reynolds 631 zonally-butt air-hardened steel tubes to concentrate the strength where it is most needed to channel your energy.

Besides the most sophisticated steel tubeset that has ever graced a tandem frame, we continue to improve the breed with newly developed components and proven performers. The superb new Alpha Q X-2 carbon tandem fork provides superb navigation with unprecedented light weight. Clip in and spin the excellent FSA SLK MegaExo crankset, click through the Shimano Dura Ace or Campagnolo Record drivetrain, and savor the cool stuff that you had on your wish list anyway. You know you want to.

You'll be awestruck by the *Supremo's* breathtaking acceleration, effortless climbing, and smooth, precise road manners. Riding the *Supremo* will get your heart racing like climbing into a Formula One race car at Monaco. You'll be too absorbed in the perfection of performance to notice you're well over the speed limit. Wipe that grin off your face.





You've been cycling long enough to know what a correctly engineered and well-constructed bicycle can do. Fanciful marketing or scare tactics in the sales literature of pretenders does not sway you. Nor will you be seduced by the latest materials craze. You simply want every gram of performance you can get.

Building the lightest, best-performing tandems available is more than simply shaving metal or choosing underweight components. Anybody can make lightweight bikes, but constructing tandems that hold numerous national and international titles is a rarity. The **Robusta** is a proven performer that has not only rocketed scores of athletes into first place, it also holds up to the rigors of innumerable training miles with ease.

Yes, the *Robusta* is lighter than ever before. We just can't stop tweaking its performance, tuning the ride to direct more of your muscle power to those two little patches where the rubber burns up the road. How did we do it? We designed the *Robusta's* new incredibly light zonally-buttet ACMUltra7 tubing, and reworked the geometry around the very sexy new Alpha Q X-2 tandem fork. In fact, we redesigned every millimeter of the *Robusta*, making it more performance-oriented than ever, while dropping its weight to a jaw-dropping 27.7 lbs. Of course, it's the ride quality that really counts. Wind up this tandem's tachometer and let the driven soul that has made the *Robusta* a legendary performer show you what it can do.



The 27.7 lb Co-Motion Robusta painted Sunrise Pearl fading to Bittersweet Pearl and featuring our new carbon fork and seatposts by Alpha Q.



Pat and Shannon Youngquist touring Ireland.

Brenda and Jim Rantala racing in the Co-Motion Classic Tandem Race 2006.





Beautiful, light and fast. At 24 pounds as equipped, this highly caffeinated tandem is designed for pure speed. Shown in Snowwhite Pearl, it's in a class of its own.

When Co-Motion Cycles introduced its first tandems 19 years ago, we were considered radical oddballs to design tandems just for people who like to go fast. We didn't think it was so crazy to make tandems more like the bicycles we all love to ride, so we continued dreaming up new ideas while we built our company making elegant, exhilarating, beautiful tandems.

Because the **Macchiato** looks different, it will be the subject of much speculation. The race to make better tandems has taught us the importance of simplicity. Making a lighter tandem means using less material, while rethinking where the material that must be used is most effective. In the true minimalist sensibility, we've pared the **Macchiato** down to its essential elements, stripping away tradition along with unnecessary mass.

With its impossibly low weight, the **Macchiato** is equally surreal in performance. When it comes to putting cleat to pedal, the **Macchiato** very, very real. You won't miss the tradition, the other tube, or the extra weight of other tandems when you fly up the climbs and outstrip your personal bests with unbelievable speed.

While outwardly simple, the compact design of the **Macchiato** represents a reinvention of virtually every tube in its construction. Our new ACMUltra7 tubes cannot be found elsewhere. The **Macchiato's** impressively sized bi-oval downtube intersects with a deeply machined headtube, radically profiled zonally-buttressed top tube, and optimally ovalized seat tubes, forming a muscular, compact stature.

Designed and custom constructed just for you, we go the extra mile to make certain your **Macchiato** is perfectly fitted and balanced to focus your strengths and harness the power of teamwork, and the power of new ideas.



Dan Vrijmoet and John Weyrich on their way to winning the 2006 CCTR.





With effortless telescoping adjustability it's easy to see why we named our revolutionary line of family-style tandems the **PeriScope**. Designed to accommodate people of all different sizes with fun and style, the *PeriScope 26* is the perfect tandem for families on the go.

The heart of the *PeriScope* design is our double seat mast system, which provides four times the range of adjustability of other tandems and accommodates riders from 3 ft. to over 6 ft. Think of the *PeriScope's* telescoping, precision aluminum seat mast and quick-release double-clamping system as a seat post within a seat post that adjusts to fit virtually anyone.

The simplified frame you see in each *PeriScope* uses specially designed exceptionally large diameter, zonally-buttressed tubing. Whichever *PeriScope* model you choose features the lightweight and rigid compact frame design that supports the tall and the small with admirable performance. Safety, comfort and reliability never take a back seat to the design priorities of achieving exceptional stand-over clearance and user-friendly comfort.

We've taken great care with the *PeriScope* line's component selection as you'd expect from *Co-Motion*. You'll find top-quality, tandem-ready components from the value-priced **PeriScope Scout** to the zingy new **PeriScope Hammerhead**.

The *Co-Motion PeriScope Family Plan* was designed with growing families in mind but performs outstandingly with virtually any combination of riders. Really. Take one on your club ride and then ride with your kid to the local park.

We've worked hard to develop the *PeriScope Family* into the most adaptable tandem in the world. Imagine the possibilities with your kids, your spouse and your friends. A *Co-Motion PeriScope* for your family represents your commitment to a healthy, inclusive lifestyle today and for years to come.

Choose a 26" model *PeriScope Scout* or **PeriScope Torpedo** for ease of use. 26" wheels are tougher and they can take fatter tires, but don't roll quite as fast as 700c wheels. The 26" models will fit smaller riders than the 700c models. See sizing info for details. If you enjoy road riding and you prefer 700c wheels, we recommend the *Scout 700*, *Torpedo 700* or the *PeriScope Hammerhead*. The 700c format gives up a little of the sizing range that the 26" models offer, with lesser ability to fit a small rider in front, and it requires a slightly larger stoker as well. How much of your family would you like to fit on one bike? The **PeriScope Trident** and **Trident Convertible** triplet expand on the concept by placing three riders together. Yes, we also make *PeriScope* quads and quints!



(Above left) Steven Rutz and family enjoy their *PeriScope*. (Below left) Jean-Charles Gosselin's *PeriScope* takes a break during an outing in France. (Left) The Baxters proudly show off their *PeriScope* at *Co-Motion's* Eugene, Oregon headquarters.

## PERISCOPE SCOUT 26



The *PeriScope Scout 26* makes sure that everyone gets to ride with you. In a beautiful Champagne color you'll be a class act.

## PERISCOPE SCOUT 700



This new *PeriScope* model will be the hit of the neighborhood. Painted in Medium Blue Metallic.

For 2007, taking the family along is a whole lot easier. The ***PeriScope Scout*** is a new member to the *PeriScope Family*. The success of our other *PeriScope* models has made it possible for us to produce the *PeriScope Scout* as a lower-priced alternative. Equipped with comfortable upright handlebars, twist-grip shifting, Avid rear disc brake, and a user-friendly attitude, the *PeriScope Scout* will impress you with its incredible value and solid work ethic.

Sharing the same frame design as our *PeriScope Torpedo 26* and *Torpedo 700*, the *PeriScope Scout* raises the bar on packing features no other bike manufacturer can offer at an incredibly low price. With its amazing ability to fit just about anyone from four to 99, you know we can fit you, all of your family and your friends too. The *PeriScope Scout's* unbeatable capability and can-do attitude will bring your family together as it grows for years to come.



Greg and Shirley Woodrow on their *Co-Motion PeriScope*.





## PERISCOPE TORPEDO 26



Since we introduced the very first *PeriScope* a few years ago, these amazing tandems have really proven themselves! They fit just about anyone; bike shops buy them to double as rentals and even use them as tandem-fitting aids. Of course, once you try a *Co-Motion PeriScope*, you realize it's much more than just a super-adjustable tandem—it's a very fine tandem that will impress you no matter what your experience or skill level. *PeriScopes* are showing up at tandem races, centuries, cross-state rides, tours, and school doorsteps, where Moms and Dads drop off and pick up kids thrilled to get to school in a way that's so much cooler than the bus or family sedan.



Whether you choose the ***PeriScope Torpedo*** 26" or 700, you'll know the options are wide open for riding with your kids, your friends, your bike club, and more. Choose the *Co-Pilot* option and take your *PeriScope Torpedo Co-Pilot* to tour the avenues of France, or the coastline of Maui. With suitcase portability, your options are wide open!



You'll look and feel fast on a *PeriScope Torpedo* 26 painted with our Ferrari Red paint. Stop quickly too with standard disc brakes.



## PERISCOPE TORPEDO 700



If travel is in your plans, your S&S coupler equipped *PeriScope Torpedo* will go along for free. In Dark Orange Metallic paint.



Pound out some miles with your favorite stoker on this *PeriScope Hammerhead* with an Alpha Q fork, painted Lime Gold to Bittersweet Pearl.

Just when you thought it was safe to get back in the water... The ***PeriScope Hammerhead*** pushes the *PeriScope Family* a step farther, taking performance up a notch higher than we expected to go. Everything you wanted in a tandem and then some—superb adjustability suddenly sheds a couple of pounds.

The *PeriScope Hammerhead's* ACMUltra7 aluminum frame puts it in some pretty sleek company. Lighter than our *Roadster*, approaching the breakthrough weight of our *Robusta* or our new *Macchiato*. The *Hammerhead's* *PeriScope* features are fully explained on page 13. What is harder to explain is how the *PeriScope* concept has taught us new things about performance tandems as we develop new designs and watch how these amazing tandems get used. We never expected to introduce a performance *PeriScope* when we first began work on the idea years ago. Nor did we expect the *PeriScope* to change our thinking about tandem design.

Cheryl LeCompte and Lauren Manierre riding a *PeriScope* at the Bay Area Outreach & Recreation Program. Photo by Scot Goodman



Paul and Diana Duncan taking in the views at Haleakala Volcano on Maui.

We visualize the *PeriScope Hammerhead's* ideal team as say, a category 2 racer dad who wants to get his kid and his wife to share a little training time with him. He could wait until the kid will fit an ordinary tandem, but why not get a *PeriScope Hammerhead* and teach the kid how to spin maybe even before the training wheels come off the little pink or blue bike in the garage. Of course, knowing how other *PeriScope* buyers have been full of surprises, we'll do our best to prepare for the *Hammerhead* to zip out of sonar range, only to circle back and show us what those teeth can really do!





## PERISCOPE TRIDENT

Remember how you used to ride together before the kid came along? Your lives change as your family grows. You take a bike ride after work; your spouse goes to the gym in the morning while you watch the kid. You find yourself thinking that in spite of the family bond you've all found together, you spend far too much time apart. Isn't it time to bring it all back together?

Our innovative *PeriScope* tandems have been embraced as the most versatile family-friendly tandems made. We developed the ***PeriScope Trident*** in response to your feedback to push the *PeriScope* concept a step further.

Like your growing family, the *PeriScope Trident* and ***Trident Convertible*** are a natural progression for our family of *PeriScope* tandems. We like to grow with you, and using our innovative telescoping seat mast system, we've made it easy for you to adjust your *Trident* for virtually any three people who want to ride!

For families embracing cycling as part of their lifestyle, a triplet is an ideal way to include a child in family cycling adventures without resorting to a trailer or a babysitter. With your guidance, your child can ride with you safely and comfortably at your speed, while learning the importance of family teamwork and unity.

Both the *PeriScope Trident* and *Trident Convertible* have incredible fitting capability for nearly every family. The *Trident Convertible* has the added ability to convert from triplet to tandem (double). If you're uncertain that you want a full-time triplet, now you have the option of a triplet that can also serve as a tandem.



*PeriScope Trident* in metallic Tropical Green.



## PERISCOPE TRIDENT CONVERTIBLE

Sean Hoover takes his kids for a spin on their *PeriScope Trident Convertible*.



*PeriScope Trident Convertible* in Soft Yellow paint with optional front and rear disc brakes.

## CO-MOTION TANDEM SIZING

...is designed for a wide spectrum of fitting options, and a stronger, lighter and more graceful frame.

**Where to start**—It's best to put the taller rider up front in the captain's position, while the smaller rider is the best choice for the rear (stoker) position.

**Pick a size**—Select the tandem size which best fits the captain, and then consider the stoker's fit. Stokers don't need stand-over clearance (though it's good if you can get it) to achieve a comfortable position.

**Making a choice**—Notice that each of you may fit more than one size. We suggest looking very carefully at one of the most overlooked aspects of bicycle fit:

**Adjusting reach**—Make sure the combination of top tube length + stem matches your needs. To fine-tune your fit, we have several choices of front stems and two adjustable stoker stem choices. If you're not sure about your positioning, you may use our 13-point *Co-Motion Fit Guide* and request assistance.

**Choose crank lengths**—Get the right crank length. *Co-Motion* offers tandem cranksets in several lengths to fine tune the

fit to your needs. Check your model's specs for crank length information.

**Unprecedented adjustability**—Our *PeriScope* tandems change many things we've come to accept about sizing. No matter what kind of fitting problems you may have had with other tandems, a *PeriScope* tandem will likely fit you to a "T."

**Take the edge off**—Suspension seatposts: Deduct 2.5" (64mm) from the low end of the inseam range to allow room for the Thudbuster ST seatpost's active suspension linkage.

Road Tandems SIZING*	21 x 18 (small)	22 x 19 (medium)	23 x 20 (large)	23 x 18 (large – small)
<b>CAPTAIN</b>	5'5" to 5'10"	5'8" to 6'1"	5'11" to 6'4"	5'10" to 6'4"
Inseam Range	29.5" to 33"	30.5" to 34"	31.5" to 36"	31" to 36"
Stand-over Height	30.5"	31.1"	32.0"	31.3"
<b>STOKER</b>	4'10" to 5'10"	4'11" to 5'11"	5'0" to 6'0"	4'10" to 5'10"
Inseam Range	26.5" to 33"	27.5" to 34"	28.5" to 35"	26.5" to 33"
Stand-over Height	27.6"	28.6"	29.5"	27.3"

\*Supremo and Robusta Stand-over Height is slightly lower.

Mocha Tandem SIZING (26" wheels)	18.5 x 15 (small)	20 x 17 (medium)	21.5 x 18 (large)
<b>CAPTAIN</b>	5'2" to 5'8"	5'6" to 6'0"	5'10" to 6'4"
Inseam Range*	27" to 32.5"	28.5" to 34"	30" to 35.5"
Stand-over Height*	27.9"	28.9"	30.5"
<b>STOKER</b>	4'10" to 5'10"	4'11" to 5'11"	5'0" to 6'0"
Inseam Range*	23.5" to 30.5"	25" to 32"	27.5" to 34.5"
Stand-over Height*	24.4"	26.6"	28.1"

PeriScope 26 SIZING (Scout, Torpedo)	SMALL	LARGE
<b>CAPTAIN</b>	4'10" to 6'2"	5'2" to 6'4"
Inseam Range*	26.5" to 35"	26.5" to 36.5"
Stand-over Height*	26.7"	26.7"
<b>STOKER</b>	3'6" to 6'2"	3'6" to 6'2"
Inseam Range*	19" to 34"	19" to 34"
Stand-over Height*	19.7"	19.7"

PeriScope 700 SIZING (Scout, Torpedo, Hammerhead)	SMALL	LARGE
<b>CAPTAIN</b>	5'4" to 6'0"	5'6" to 6'4"
Inseam Range	28.5" to 35"	28.5" to 35"
Stand-over Height	28.75"	28.75"
<b>STOKER</b>	3'8" to 6'2"	3'8" to 6'2"
Inseam Range*	21.5" to 34"	21.5" to 34"
Stand-over Height	21.8"	21.8"

PeriScope Trident SIZING	SMALL	LARGE
<b>CAPTAIN</b>	5'0" to 6'2"	5'2" to 6'4"
Inseam Range	28" to 35"	28" to 36"
Stand-over Height	26.7"	26.7"
<b>MIDDLE STOKER</b>	4'6" to 6'2"	4'6" to 6'2"
Inseam Range	24" to 34"	24" to 34"
Stand-over Height	24.4"	24.4"
<b>REAR STOKER</b>	3'6" to 6'2"	3'6" to 6'2"
Inseam Range	20" to 34"	20" to 34"
Stand-over Height	20.2"	20.2"

PeriScope Trident Convertible SIZING	SMALL	LARGE
<b>CAPTAIN</b>	4'10" to 6'2"	5'2" to 6'4"
Inseam Range	24" to 35"	24" to 36"
Stand-over Height	22.25"	22.25"
<b>MIDDLE STOKER</b>	3'6" to 6'2"	3'6" to 6'2"
Inseam Range	19" to 34"	19" to 34"
Stand-over Height	19.5"	19.5"
<b>REAR STOKER</b>	3'6" to 6'2"	3'6" to 6'2"
Inseam Range	19" to 34"	19" to 34"
Stand-over Height	19.5"	19.5"

## CUSTOM FITTING

Our broad selection of tandem and single bicycle models come in a thorough array of sizes that meet the needs of most cyclists. In fact, every bicycle we offer is made with geometry and sizing that is a direct result of the fitting data we've collected from our customers over the years. *Co-Motion Cycles* custom fitting services provide the ideal way to get exactly what you need, with your fit and your specifications met right from the drawing board.

To take advantage of our custom fitting service, start by determining which of bicycles has the features you're interested in. Because we build all of our bicycles in our own facility, any *Co-Motion* in this catalog is available in a custom fitted version. To tailor a perfect fit for you, our 13-point *Co-Motion Fit Guide* can be completed quickly at your home or at your *Co-Motion* dealer. The key factor in custom fitting is communication; so we make a point of listening to help you decide exactly what you need. After receiving your order, we'll send a CAD drawn design for your approval. Construction of your bicycle begins only when you are satisfied with the design.

*Co-Motion* makes an incredible variety of custom bicycles; so if you don't see what you're looking for, don't hesitate to inquire!

We have no trouble fitting very small or very large people on custom designed singles or tandems. Some of the most respected bicycle fitting experts in the world rely on *Co-Motion Cycles* for superb fit and execution of design. Take advantage of our experience and expertise to make your dream bike a reality.



## CO-MOTION FIT GUIDE

CUSTOMER NAME(S) \_\_\_\_\_ DATE \_\_\_\_\_

ADDRESS \_\_\_\_\_

CITY \_\_\_\_\_ STATE \_\_\_\_\_ ZIP/POSTAL CODE \_\_\_\_\_

PHONE \_\_\_\_\_ EMAIL \_\_\_\_\_

I AM (WE ARE) INTERESTED IN A ☐ TANDEM ☐ SINGLE MODEL NAME(S) \_\_\_\_\_

### 1. INSEAM \_\_\_\_\_

Measure with shoes off. Stand squarely against a wall and raise a straightedge—a clipboard, carpenter's square, ruler or other device—high against your crotch. Measure from the floor to the top of the straightedge.

NOTE: This measurement is NOT the same as a trouser inseam measurement.

### 2. THIGH \_\_\_\_\_

Stand with your back squarely against a wall, and raise one knee until your thigh is parallel to the floor. We're looking for the head of the femur, which is just a few inches below the top of your pelvis. The head of the femur is a hard protrusion very close to the flesh, but easier to locate on men than women. Measure from the center of your hip/femur joint to the center of your knee. The next measurement (3) uses the same point.

### 3. BACK \_\_\_\_\_

Measure from the center of your hip/femur joint to the center of your shoulder joint. Stand up straight!

### 4. SHOE SIZE \_\_\_\_\_

### 5. WINGSPAN \_\_\_\_\_

Standing squarely against a wall, spread your arms straight out with your palms facing outward. Measure from the centers of your palms (not your fingertips).

### 6. SHOULDER WIDTH \_\_\_\_\_

Measure from the outside of the left shoulder to the outside of the right shoulder.

### 7. FOREARM \_\_\_\_\_

Measure from the center of the elbow to the center of the palm.

### 8. HEIGHT \_\_\_\_\_

### 9. WEIGHT \_\_\_\_\_

(Please be honest!)

### 10. SADDLE HEIGHT \_\_\_\_\_

On your existing bicycle, measure the distance from the center of your bottom bracket (crank spindle) to the top of the saddle. If you know your crank-arm length, please note it here.

### 11. REACH \_\_\_\_\_

Also, on your existing bike, measure from the center of the handlebar (where the stem clamps to it) to the center of the seatpost, as illustrated below. Make sure your tape is level.

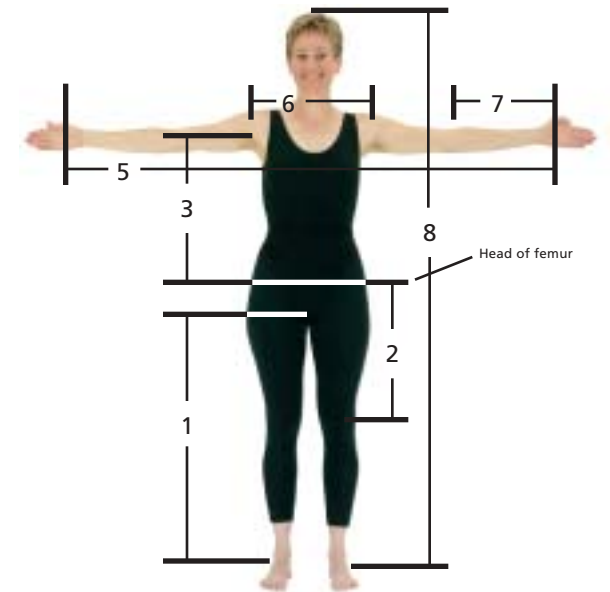
### 12. a) RELATIVE SADDLE HEIGHT \_\_\_\_\_

### 12. b) RELATIVE STEM HEIGHT \_\_\_\_\_

Two more measurements from your existing bike: Measure from the floor to the top of your saddle (12a). Then measure from the floor to the center of the handlebar, where the stem clamps to it (12b).

13. Give us a little background on the bike(s) you've had and loved or hated, and the kind of riding you do or plan to do. Please attach another sheet if needed.

- To help you determine a correct bicycle fit, complete the all the information on this page.
- Please note individual measurements for captains (C) and stokers (S).
- Note the charts below to assist you in your measurements.



## CO-MOTION CO-PILOT CONCEPT



Introduced in 1993, the S+S Machine Bicycle Torque Coupling forever changed the image of travel bikes, making odd-looking folding bikes with non-standard parts obsolete. With the S+S Coupling, a true high performance bicycle can be separated and packed for travel quickly and easily in airline-checkable luggage. Our expert integration of the S+S Couplings will make you forget that the couplings are there, until it's time to pack up your bike and go!



A simple **hook spanner**, included with your *Co-Pilot*, is all that is required to loosen or fasten the threaded BTC nut.



All *Co-Motion Co-Pilot* framesets include **quick-release cable splitters** to facilitate fast assembly and disassembly. Splitters install on both derailleur cables and the rear brake cable.

In 1994, we launched the ***Co-Motion Co-Pilot Project***, becoming the first bicycle company in the world to offer bicycles with S+S Couplings as a standard feature. Since then, we have expanded the *Co-Pilot Project* by making S+S Couplings available on any Cro-Moly steel *Co-Motion* tandem or single. Just say, "Co-Pilot" and we'll make your *Co-Motion* into a world-class travel bike. As the leading maker of S+S Coupling equipped bicycles, *Co-Motion Cycles* has the expertise to ensure that your travel bike is without equal.

A close look at the elegant S+S Machine Bicycle Torque Coupling reveals the engineering that allows the system to work so perfectly. Interlocking tapered teeth are drawn together by a threaded locking. Incredibly, a well-made BTC-equipped bicycle frame is measurably stronger than an identical frame without couplings. We silver braze the S+S Couplings into our specially designed *Co-Pilot Project* tubing before hand-building your bicycle frame.

Because we know you expect the best, *Co-Motion Cycles* uses only hardened 17-4 stainless steel S+S Couplings. Many builders use weld-on couplings made from lower-grade stainless or even non-stainless material to reduce cost and speed up bicycle production. Hardened 17-4 stainless S+S Couplings assure a lifetime of flawless and corrosion-free operation. We know that once you own a *Co-Pilot*, you'll want to keep it forever.



We designed our ***Co-Pilot Hybrid Case*** with everything we've ever wanted in a travel case, and it comes with our highest recommendation. With a tough nylon fabric shell and ballistic corner reinforcements, it's got protective panels to keep your bike safe. We fitted it with larger smooth-rolling wheels and a hidden telescoping Pullman handle to make toting your bike around long airport causeways much easier. This case rolls so nicely you can toss your other bag on to roll along with it. Webbing straps surround the bag's contents, and heavy-duty zippers provide added security.

(26" x 26" x 10" = 62 linear inches)



The ***Designer Hard Case*** from S & S Machine provides a tough ABS plastic shell with an interlocking perimeter lip for a tough enclosure. Low-profile wheels and pull handle make it a snap to maneuver your bike through crowded airports. An external nylon webbing strap provides added security to keep your valuable bike safely contained.

(26" x 26" x 10" = 62 linear inches)



The S+S ***Backpack Case*** offers excellent versatility, especially for those who like to travel light. Constructed of heavy-duty Cordura nylon, this case is internally supported with an ABS plastic perimeter that velcros in place to protect your bicycle. You can carry your bike on your back using the backpack straps, (though you won't want to carry it far) or use it carry other items once the bike is removed. When not holding a bike, the backpack case collapses into an easy-to-store package.

(26" x 26" x 10" = 62 linear inches when full, approx. 26" x 10" x 3" collapsed for storage)

**Please Note:** Most airlines stipulate a limit of 62 linear inches for "checkable" luggage. Linear dimensions are the sum of the luggage's length, width, and height. The luggage we offer for our *Co-Pilot* bicycles is 62 linear inches or less.

Many other brands of travel bicycles and cases that are now being marketed as airline checkable actually exceed this 62 linear inch luggage limitation. Larger luggage is subject to surcharges and possible rerouting due to luggage compartment limitations on some aircraft.



## Add the *Co-Pilot* option to your *Co-Motion* tandem

*Co-Motion* blazed a new trail for travel tandems with a brilliant Six-Coupling system. Since our *Co-Pilot* tandem frames separate into three sections, assembly and disassembly is intelligently simplified. There's no way to assemble out of sequence, no need to remove the fork, and there are no separate tubes to lose. Plus, we strategically locate our couplings for easy access without knuckle-bashing interference from the chainrings. Our competitors simply overlook these details that make your packing job easier.

No tandem maker is more thorough than *Co-Motion* when it comes to engineering the location of the couplings for optimum frame strength. Each coupling is fully supported where it is integrated into the butted

section of our exclusive zonally-butted *Co-Pilot Project* tandem tubing. Our large diameter bottom tube is oval at both ends and round where it joins just one large S+S Coupling.

This design provides the known structural benefit of a single oversized tube as well as lighter weight and the logical simplicity of handling fewer parts. And yes, the round S+S Coupling is superior to the "oval coupler" offered elsewhere.

The *Co-Pilot* option will be a pleasant surprise on any *Co-Motion* tandem you choose. The performance is so impressive, you may end up sidelining the tandem you're riding now.

## Add the *Co-Pilot* option to your *Co-Motion* single

Naturally, the best reason to own a *Co-Pilot* is that you never have to leave your passion for cycling behind when you travel. Your *Co-Pilot* checks on as regular luggage, saving you money and hassles each time you travel. Best of all, you'll maintain your fitness while the world becomes your cycling playground.

Each *Co-Pilot* single or tandem includes a complete color-illustrated instruction booklet and an instructional CD you can play on your computer or DVD player. See our *Co-Pilot* packing slideshows at [www.co-motion.com](http://www.co-motion.com)

**Packing a genuine *Co-Pilot* tandem** takes less time than little-wheeled folding tandems. Our three-section design and easy-access couplers keep your packing job simple. Two cases recommended for worry-free travel.



**Packing your *Co-Motion* travel bike** is simple, and you don't have to be a mechanical ace to do it right. In fact, the only unusual part on our travel bikes is the S+S BTC. Cordura nylon padded sleeves with a velcro backing protect your frame inside its case.





The most versatile bike you can own and now standard with a new specially-made Alpha Q carbon fork. Shown with a sharp Bright Silver paint job.

## NOR'WESTER CO-PILOT



The best just got better.

With S&S couplers and the new Alpha Q carbon fork you can travel in style. Shown in Gloss Black with Soft Yellow panels.

Imagine yourself participating in Ride the Rockies, RAGBRAI, Seattle to Portland, Great Western Bike Rally, Ride for the Roses, Cycle Oregon—the names of these rides invoke a sense of anticipation that can inspire a season of training and commitment. Mass-celebrations of cycling, they attract growing numbers of riders as more people discover the benefits of making these unique events part of their lifestyle.

On a **Nor'Wester** taking on new challenges will be more comfortable, more efficient, and more enjoyable. This bike is truly designed for the kind of riding you do—organized tours, centuries, adventures abroad, even commuting. You won't outgrow the *Nor'Wester*, instead it will become a trusted companion that will help you to achieve your goals.

As a builder of premium handcrafted bicycles here in the Northwest, we get many requests for a bike that strikes a perfect balance between a racer and our touring-centric Americano. The *Nor'Wester* is spot-on with outstanding versatility, precise handling, and all-day comfort. With all its capabilities, the *Nor'Wester* still climbs and accelerates like an ultra light racer. Designed to handle light touring, and the fatter tires and fenders you can't get on your skinny bike; the *Nor'Wester* is truly a bike you can live on.

The new *Nor'Wester* has been redesigned with a fresh new carbon fork made just for its unique geometry by Alpha Q. Not your average racer-kid's fork, it is designed for long-reach-caliper bakes, with the *Nor'Wester's* requisite room for fenders and dropout eyelets. It's the fork we've always wanted to make the *Nor'Wester* better than ever.

We build the *Nor'Wester* with the magic carpet ride quality that only a hand built Cro-Moly steel frame can offer. You'll appreciate the lively ride and the rock solid stability you need to carry your panniers or maybe just a credit card. Details like meticulously brazed fittings, and hand-sculpted dropouts exemplify that the craft of framebuilding is alive and well here at Co-Motion Cycles. With our custom fitting services a part of every *Nor'Wester* we build, we know you're going to love this bike.





If we didn't make the incomparable *Co-Motion Americano*, we'd have to tell you the **Nor'Wester Tour** is the most capable touring bike money can buy. It has everything you need to carry touring loads, while providing an incredibly stable ride and the kind of positioning you want when your goal is to cover ground and take in the scenery.

The *Nor'Wester* is a superb touring bike that is built a little lighter to help you pack smart and tread lightly, while getting up those hills a little easier. You do know you'll get up those hills easier if you carry less, right? Examine our specifications, and you'll notice the component kit is quite similar to the *Americano* package, although the tandem-duty wheelset is exchanged for a more universal set with 130mm spacing, as most road bikes are equipped.

The *Nor'Wester Tour's* frame tubes are just a little larger than your old road bike, yet thin walled to add refreshingly supple resilience. Adding to the *Nor'Wester Tour's* impeccable balance and stability is our rock-steady *Americano* fork. This is the fork that has crossed every continent on Earth with the navigational certainty of Magellan, and the stoic resolve of a loyal Sherpa.

As we meet more cyclists who have come to know us for great touring bikes, we explain what our *Americano* can do. We show postcards and photos from epic journeys *Americanos* have taken their riders



Ken and his *Co-Motion* at RAGBRAI.

all over the most rugged parts of the globe. We often hear, "well, I'm not doing anything THAT extreme..." So here's your bike: The beautiful, capable, well-built, nicely balanced *Nor'Wester Tour*. Fitted just for you, with or without our *Co-Pilot* option for suitcase portability. It's everything the *Americano* is, and less.



If you spend your time dreaming of bicycle trips then this is your bike. Ready to tour in Soft Yellow.

### NOR'WESTER TOUR CO-PILOT



S&S couplers make this bike ready for travel on your next exotic tour. In Ferrari Red.



The touring bike standard, in Tomato Red.

## AMERICANO CO-PILOT



Set up just for you with S&S couplers and Cranberry Red with Pewter Grey panels.

When it's time to discover the joy of seeing the world first hand and at your own pace, you'll need a bicycle that won't let you down no matter where you are. Alone against the elements, you can depend on our first-rate design and construction to keep you confident and in control.

The *Co-MotionAmericano* has established the standard for what a touring bike should be, an entirely new breed of bicycle that handles self-supported, transcontinental touring without even breaking a sweat. We've borrowed and developed ideas from our unsurpassed tandem designs to increase touring load carrying capacity and provide a level of rugged reliability unmatched by any other bicycle.

For complete immunity from wheel failures, the *Americano* uses a dishless, symmetrically laced rear wheel with a 145mm axle. Our exclusively-designed tandem-sized chainstays are long enough to provide huge clearance for carrying large panniers,

yet stiff enough that your *Americano* will beg for more hills to climb. The heat-treated over-sized steel frame tubes are stout enough to repeatedly cross any continent.

Real touring geometry is vital for the success of your voyage, and we've mind-melded into the *Americano* the sure, steady disposition of a pack mule. To

help you take in the view without strain, the *Americano* manages to be relaxed and upright, with 12 available sizes to fit just about anyone. Our exclusive, hand-built fork keeps your gear rock solid even on the steepest mountain descents. There's plenty of room for fat touring tires, fender mounts, and all the braze-on fittings you need.

No other touring bike is as rugged, stable or well equipped for your adventures.



Steve Hayford touring Alaska on his *Americano*.





Co-Motion Cycles has been building highly regarded single bicycles since 1988. Combining timeless hand-craftsmanship with the very best materials, our Co-Motion **Espresso** represents the ideal marriage of the framebuilder's art with modern steel technology. The result of our insatiable ardor for steel is a fast, efficient ride that will instill a pride of ownership lasting a lifetime.

Built with Reynolds 853 double-buttressed tubing, a proven steel alloy that becomes stronger after welding, the *Espresso* represents the very best in steel technology. With its wide array of diameters and butting profiles, Reynolds 853 helps us to very effectively optimize our size-specific tubing choices.

Designed around classic stage racing geometry for long days in the saddle and confidence inspired handling, the *Espresso* is better than ever with the exceptional Alpha Q G510 carbon fork. With our custom fitting services included with every frame, you'll be positioned for efficiency and success.

Choosing your next road bike deserves more attention than simply looking for a tubing label. Only a hand-built frame from one of the world's premier framebuilders can deliver the full potential of the material as it was designed to be used. A test ride on the *Espresso* will awaken you to what you've been missing: a crisp-riding race bike that glides over the flats, climbs like a cat, and makes you seek out curvy roads to spin some extra miles. Now more than ever, the *Espresso* is the ride you've been waiting for.



A classic steel ride artfully made just for you. Medium Blue Metallic and Shimano Ultegra components.

## ESPRESSO CO-PILOT



Travel with your favorite ride.

Dura Ace components, Alpha Q fork and Rolf Prima Echelon wheels. Magenta Pearl and Lime Gold panels.

## RISTRETTO



Only 16 pounds as shown with FSA K-Force cranks, Dura Ace components and Rolf Prima Vigor wheels. Featuring a fine panel paint job of Cranberry Red and White Mica.

*Co-Motion* is known for making bicycles with a solid sense of purpose. We see each bike as an answer to a need, and fill the niches where we find them. Oddly enough, well-crafted aluminum bicycles are rare. While giant mass-production facilities seem to churn out millions each year, it's hardly the way you imagine your personal machine should be lovingly crafted. In stark contrast, we build our **Ristretto** using the best in aluminum technology with the individual attention to detail that only *Co-Motion* can offer.

The *Ristretto* exemplifies what a road bike was always meant to be. Our renowned design panache gives performance equity no matter what your size with our included custom fitting service. We individually select Columbus Starship tubes for each frame for optimized strength-to-weight advantage. Simple, clean lines and exemplary workmanship demonstrate our commitment to substance over marketing fluff. If you long for hand-built quality, with the incredible rigidity and impossibly light weight, the *Co-Motion Ristretto* is your bike.

## CO-MOTION TT



*Co-Motion TT* in Tomato Red, 17 lbs. as equipped.

If your idea of a good time is racing flat-out against the clock, we build the bicycle you need to reach your potential. The **Co-Motion TT** is made with the sole purpose of allowing you to maximize your strengths in the race of truth.

Handmade from curvaceously profiled ACMUltra7 aluminum aero tubes, the *TT* is one of the lightest time trial bikes on the market. The *TT*'s rear-loading dropouts allow changes in effective chain stay length, while the rear tire tucks nicely into the seat tube's wind-cheating arc.

We build the *TT* in 3 sizes for optimal positioning and uncommonly rideable geometry that's so rare in time trial machines. Up front, the *TT* accepts standard 1-1/8" headsets, while the phenomenal Alpha Q TS20 fork completes this serious go-fast machine.

Time trials will always hurt, but you'll cross the finish line a lot faster on a *Co-Motion TT*.





Every winter brings about a transformation for the cyclists at *Co-Motion* and all who live and ride here in Oregon. Suddenly the weather turns, and the svelte road-racing bike no longer symbolizes an after-work escape, but rather, a cold, wet torture.

Wherever you live, cycling through the seasons is a challenge. You feel clumsy riding your trusted road bike in your knickers, booties, jacket, gloves and layers. It's tragically comical to outfit your road bike with fenders—chopping and cutting zip ties and electrical tape. You trudge through winter without shifting gears and end up dripping with road grime.

What's the solution? Get simple, strip down, and Streak! Discover how fast and free you can be with all your energy turning one chainring and one cog, uncomplicated with clogged derailleur pulleys. Order your **Streaker** naturally endowed with handpicked components suited to endure Mother Nature's worst, or simply in the nude—a lovingly handcrafted frame.

Choose our **Streaker Fe**, made from Reynolds 853 bones, or the **Streaker AL**, constructed of Columbus Starship aluminum. Our *Streaker* kit includes a dual-function rear hub that operates as a fixed-gear or freewheeling single-speed. Long-reach caliper brakes allow plenty of stopping power with room for big rubber and fenders to keep your hide dry. Of course, every *Streaker* is fitted just for you, so whether you're streaking the velodrome or the boulevard, we'll put your frame together the way nature intended.

Denude your calendar of the words "off-season." Do what the pros do and develop power and a spin that will allow you streak to your best performance next season.

Pants optional.



Fast, responsive, perfect. The aluminum *Streaker* in Medium Blue metallic with Pumpkin panels.



As simple as it gets, one gear and you.  
With the S&S coupler *Co-Pilot* option, in Sunrise Pearl with Gloss Black panels.

## DEMON



Playing in the dirt is fun. This Co-Motion *Demon* is already a classic. Shown here in Lite Teal Pearl with Sunrise Pearl panels.

## LUCIFER



If cyclocross is a passion then ride like the devil.

The *Lucifer*, with Rolf Prima Vigor wheels, FSA carbon compact crank, Alpha Q CX-20 fork and Light Blue metallic with Vanilla panels.

You may have suspected all along that a great place to cycle like the Northwest is nothing but a breeding ground of idle hands and evil ideas! One idea that's been festering for eternity and is enjoying a pernicious re-emergence is cyclocross. Whether you like to suffer in a cold and muddy purgatory with a hundred other cyclists or rattle a cowbell as the mired parade struggles by, you have to admit, it's hard to take your eyes off cyclocross.

Once the collecting-pot of castoff road bikes with extras brazed on and parts borrowed or stolen from the-devil-knows-where, cyclocross is becoming a showplace for bicycle handiwork. At Co-Motion Cycles our mastery of the craft is evident in every frame. Whether you commit your condemned soul to a **Lucifer** or **Demon**, we'll select size-specific tubing and custom geometry just to fit you, with fiendishly superb balance and attention to detail we know you desire.

The *Demon* is a Reynolds 853 steel beauty that is impishly tough, yet easy on the eyes. Need a great 'cross bike you can throw into an airline-checkable case and fly off to Nat's? The *Demon Co-Pilot* is perfect. With or without the *Co-Pilot* option, the *Demon's* Alpha Q CX-2 fork and Ultegra or Dura Ace kit is ready to take on the 9 circles of hell, or your local mudhole. You won't find a better steel 'cross bike.

The diabolically fast *Lucifer* is one of very few made-in-America aluminum bikes you can buy, and we make them right here using sinfully light, hellishly strong Columbus Starship tubes. The *Lucifer's* excellent new Alpha Q CX-2 fork and your choice of DuraAce or Ultegra build kits you'll command those infernal 'cross courses like the Devil himself. Just sign right here...





As a larger person—say 250 pounds or more—you know that you need a tough, reliable bicycle that is free from the failures that plague bikes designed for lightweights. We named this remarkable bicycle for an exceptional place; Oregon's legendary Mt. Mazama, which lost much of its mass when it erupted eons ago, only to reveal its inner beauty as it became Crater Lake.

The **Mazama's** compact frame design gets your body upright with easily accessed controls, providing exceptional ease of mounting and dismounting. The gears we've chosen for the **Mazama** are incredibly wide ranged, enabling you to reach your destination while surpassing your personal goals.

Each **Mazama** is hand built to perform reliably with grace and style. Fittings for adding racks and fenders ensure that you'll be ready to carry all the gear you need for an extended tour, a shopping excursion, or your daily commute. We'll make sure you're fitted properly by including our custom fitting service with every **Mazama**.

If you haven't tried a bicycle for many years, the **Mazama** will help you build your confidence, allowing you to set the saddle low so that both feet can be firmly planted upon the ground when starting and stopping. As you develop your strength and fitness, the saddle can be raised for a more efficient position. Riding the **Mazama** for health will help you achieve goals that a cycling lifestyle can provide while you relive the joy, the freedom, and independence that made you love your very first bicycle.

The **Mazama** is available in a *Co-Pilot* version for suitcase portability.



Standard with dual disc brakes and wide range gearing it's the perfect bike for the larger rider. Available in elegant Purple metallic paint.



Brooks Allen and Gregg Bleakney traveling through the third leg of their epic Alaska to Tierra del Fuego Ribbon of Road tour raising more than \$33,000 to date for the American Diabetes Association. These photos were taken in Central and South America. See [www.ribbonofroad.com](http://www.ribbonofroad.com) for updates.

## CO-MOTION GEAR

Take *Co-Motion* on the road with you, from head to toe! Top quality wearables that look good, feel good, and doggone it, people like them!



### Co-Motion T-Shirts

New for 2007, our stylin' logo *Co-Motion* cotton t-shirt in a cool moss green sports a map of Oregon on the back. Show your *Co-Motion* colors with a shirt that will become a favorite the more you wear it. Available in sizes S, M, L, XL, XXL.

### Co-Motion Jerseys

Show off your impeccable taste and be cool, comfortable, and fast in our sublimated jersey. These mod-looking beauties feature a 3/4-length zipper, and soft, breathable fabric. They're made for us by Voler with ProSensor fabric and high-quality construction. Word has it this is the most comfortable jersey many of our friends have ever worn. Brick red, poppy orange, and tangerine yellow fade body with black, silver and white accents.

Men's cut is Voler's relaxed Club Fit. Men's sizes: S, M, L, XL, XXL, XXXL

Women's cut is proportionate and fitted. About half of our female customers prefer the men's cut. Women's sizes: S, M, L, XL

### Co-Motion Shorts

Our *Co-Motion* black team shorts are made by Voler of 8-panel anatomical cut Pro Tex Nylon Lycra material with *Co-Motion* printed on the side panels.

The shorts are available in standard short or bib short design and both feature leg gripper elastic and the Voler Cantara anti-bacteria pad providing comfort for long hours on your *Co-Motion* bicycle.

The shorts are unisex sized in S, M, XL and XXL.



### Co-Motion Hats

Cover your head and improve your social status in one of our hip embroidered hats by Richardson Sports. Our heavyweight brushed twill cap is available in driftwood or navy. One size fits virtually anyone with its nice cloth strap and brass adjustment buckle.

The waterproof waxed cap (on the left) is buck colored and has a fully adjustable nylon web strap with a plastic buckle. Yep, it's really waterproof. Water falls off it like it rolls off a duck's back. One size fits most anybody.



### Co-Motion Water Bottles

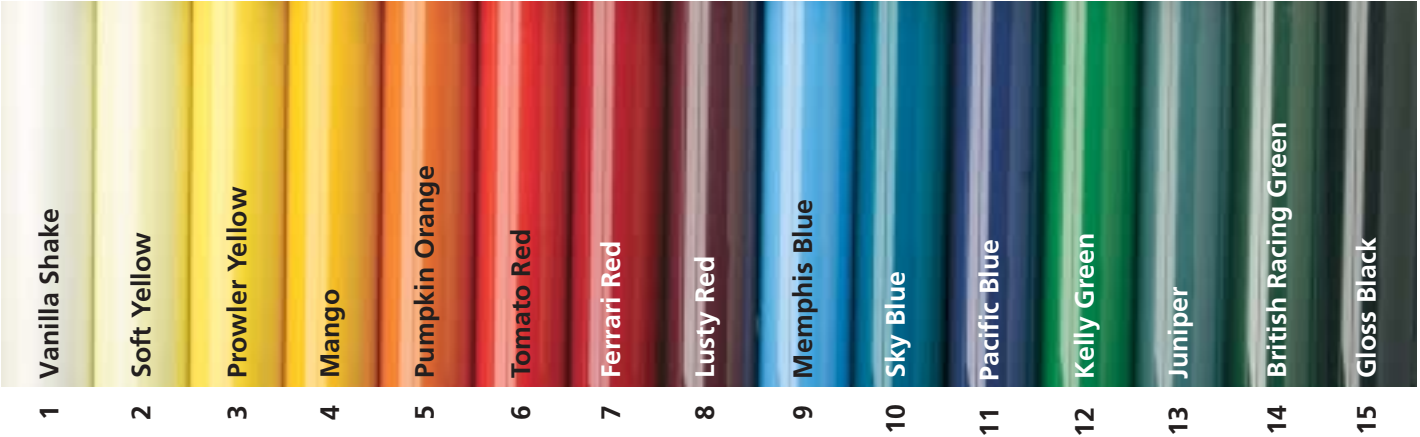
Our *Co-Motion* water bottles from Specialized with the *Co-Motion* logo on one side and the *Co-Motion Classic Tandem Stage Race* logo on the other. In small and large sizes.



Your choice of single color PPG Global paint from this page at no additional cost; upcharges apply for House of Kolor Pearlescents. Upcharges also apply for two-, three-, and four-color fades. Choose only colors from a single column for fades. See price list for all upcharges. Custom colors and effects are available; please inquire.

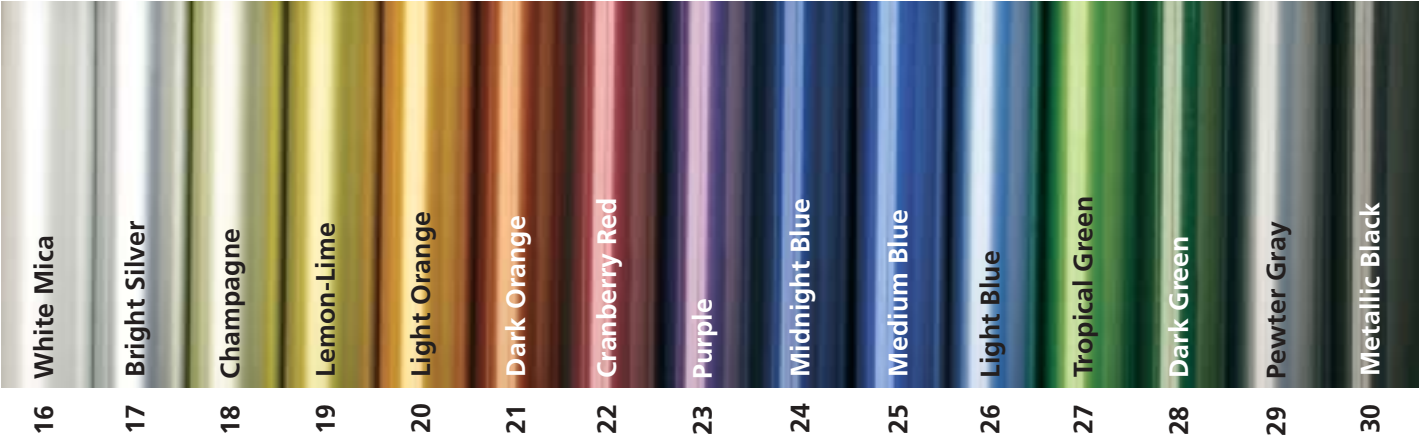
Opaque PPG Global System

Also known as non-metallic or solid colors.  
Strong, rich colors for a traditional look.



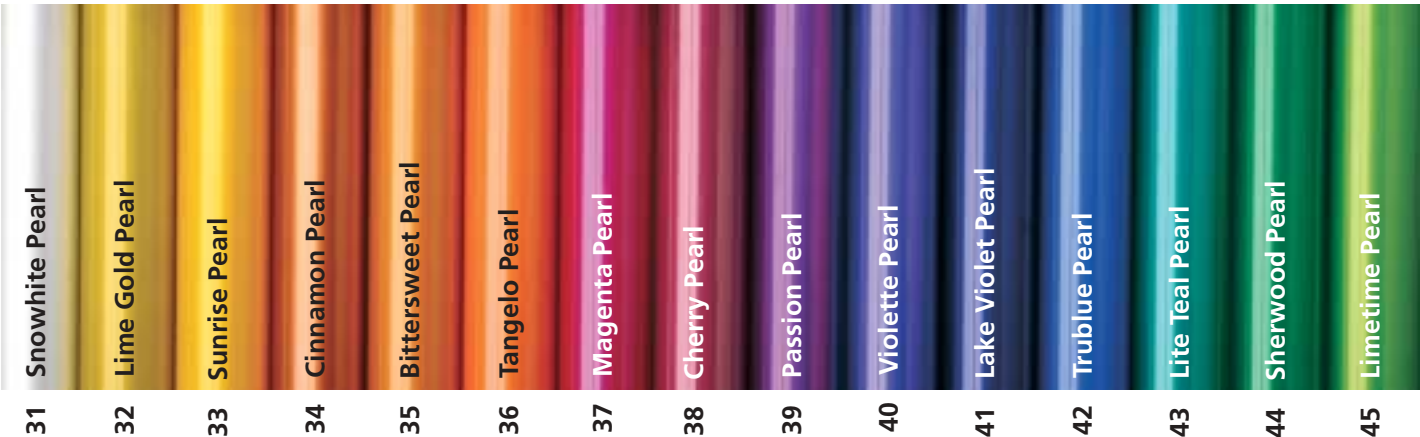
Metallic and Mica PPG Global System

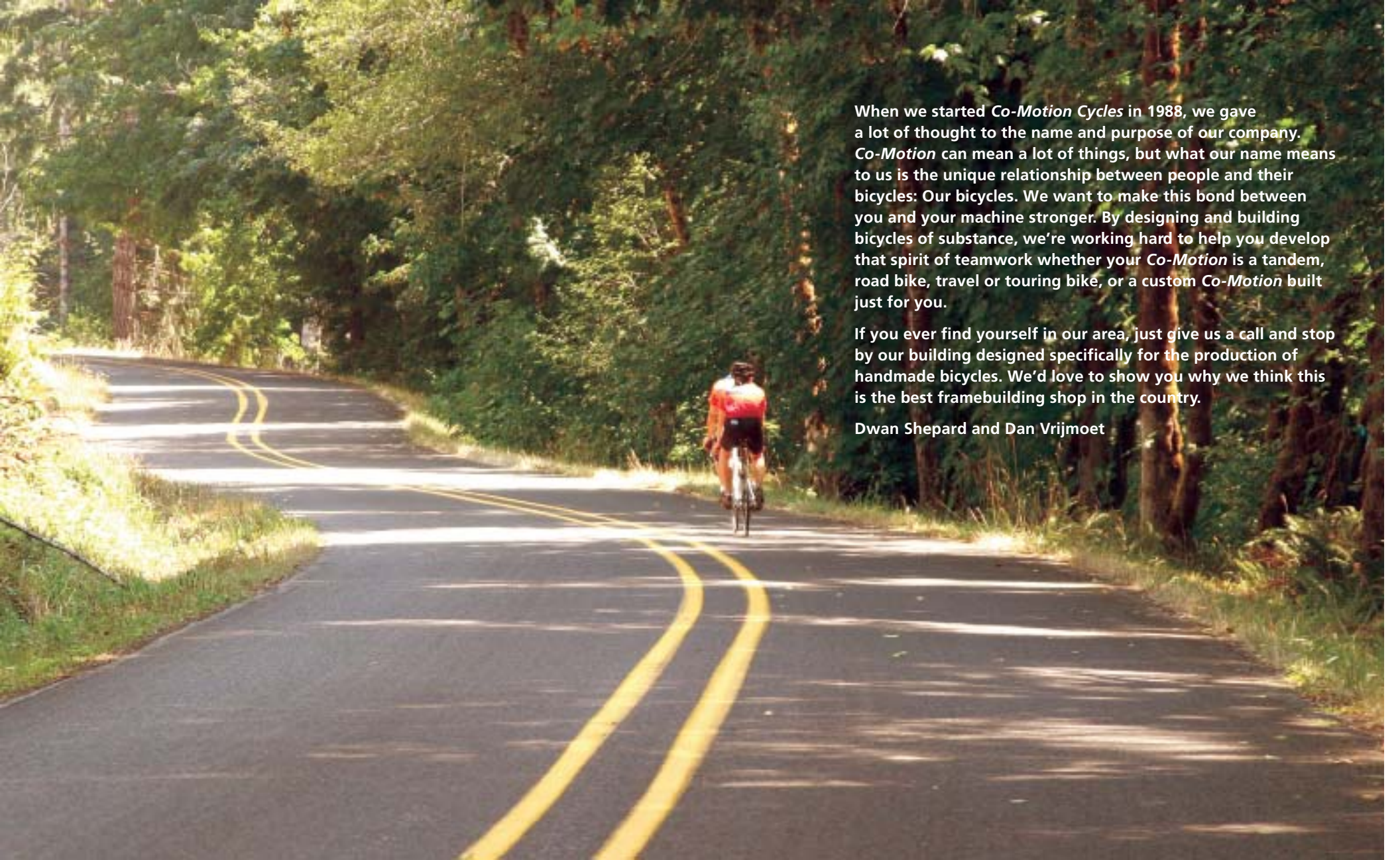
Particles reflect light and add showroom shine and depth.



House of Kolor Pearlescent

Pearl or opalescent particles in the paint reflect light, and add depth and beauty to your Co-Motion's finish.





When we started *Co-Motion Cycles* in 1988, we gave a lot of thought to the name and purpose of our company. *Co-Motion* can mean a lot of things, but what our name means to us is the unique relationship between people and their bicycles: Our bicycles. We want to make this bond between you and your machine stronger. By designing and building bicycles of substance, we're working hard to help you develop that spirit of teamwork whether your *Co-Motion* is a tandem, road bike, travel or touring bike, or a custom *Co-Motion* built just for you.

If you ever find yourself in our area, just give us a call and stop by our building designed specifically for the production of handmade bicycles. We'd love to show you why we think this is the best framebuilding shop in the country.

Dwan Shepard and Dan Vrijmoet

**On the cover:** Tony Sivesind and Carly Brynolson crank it up a notch on the *Co-Motion Macchiato* while climbing the steep curves of Wolf Creek Road in Lane County, Oregon

*Co-Motion* frames, forks and stems carry a limited lifetime warranty. Any failure resulting from faulty material or manufacture will be repaired or replaced at our discretion. Components are warranted by their respective manufacturers.

©2007 Co-Motion Cycles, Inc. All rights reserved. Made in the USA



***Co-Motion Cycles, Inc.***

4765 Pacific Avenue, Eugene, OR 97402

866.2TANDEM (866.282.6336) Toll Free

541.342.4583 Phone

541.342.2210 Fax

[www.co-motion.com](http://www.co-motion.com) Website

[info@co-motion.com](mailto:info@co-motion.com) Email