

**IceToolz®**

7343 El Camino Real #329  
Atascadero, CA 93422  
Phone: 310-615-1030  
Toll Free: 888-804-1095  
Fax: 310-347-4429



**IceToolz® 2008**  
**BICYCLE TOOLS**



[www.icetoolz.com](http://www.icetoolz.com)

888-804-1095

[contact@icetoolz.com](mailto:contact@icetoolz.com)

 **Lifu Bicycle**



## Contents

- 01** Chain Services / Crank and Peg Tools
- 02** Spoke Tools
- 03** Freewheel / Cassette Tools
- 04** BB Tools / Tire Levers
- 05** Cleaning
- 06** Hex and Star Wrenches
- 07** Cone Wrenches / Headset Tools
- 08** Pedal and Axle Wrenches / Cable Tools
- 09** Cutting Tools / Wrenches
- 10** Safety / Tool Kits
- 11** Multi Tools
- 12** Accessories / POP System
- 13** Impact Class Tools for Assembly Line
- 14** Display & Storage Service
- 15** Display & Storage Service
- 16** Xpert
- 17** Xpert
- 18** Xpert
- 19** Xpert
- 20** Xpert
- 21** Xpert



### Chain Services

- 29B2** For Shimano compatible HG/UG/IG chains, Cr-Mo steel. Perfectly for 7, 8, 9, 10-speed chains.
- 29C2** For Shimano compatible HG/UG/IG chains. Up to 9-speed chains.
- 61A3** For Shimano compatible HG/UG/IG chains, Cr-Mo steel. Perfectly for 7, 8, 9, and 10-speed chains.
- 62C1** Stainless steel go / no-go chain checker.
- 62H1** Foldable chain hook. Patent pending.
- 62P2** Pro shop chain tool for Shimano compatible HG/UG/IG chains, Cr-Mo steel. Perfectly for 7, 8, 9, and 10-speed chains. Patented.
- S62P** Spared pin for #62xx series chain tools.
- 30C1** ChainMaster, for rear chain stay, dropout, and derailleur protection when you travel. Adjustable to fit different length of axles (130, 135, 160, and 165mm).

### Crank and Peg Tools



- 04A4** Contains 14x15mm sockets & 8mm hex key for crank bolts and crank arms removal. Patented interchangeable adaptor fits both squared & hollow axles. Patented.
- 04A5** Contains 14x15mm sockets & 7x8mm hex keys for crank bolts and crank arms removal. Patented interchangeable adaptor fits both squared & hollow axles. Handle could be extend to 270mm for extra leverage. Patented.
- 04C2** Crank remover, with patented interchangeable adaptor fits both squared & hollow axles. For use with 8mm hex key wrench. Patented.
- 04D2** Contains 14x15mm sockets & 8mm hex key for crank bolts and crank arms removal. Patented interchangeable adaptor fits both squared & hollow axles. Patented.
- 27P1** Professional tool for chainwheel pegs installation, Cr-V steel. No more cracking your knuckles during operation.





▲08A1 ▲08B1 ▲08C1



▲1208



▲12F8



▲12T2



▲12A1



▲12B1



▲12C1



▲12G2



▲12H2



▲12J2



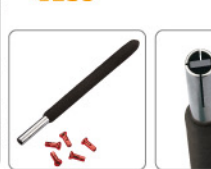
▲12K2



▼12S1



▼12S3



### Spoke Tools

**08A1** Cr-Mo spoke tool, for 3.20mm/80 ga./0.127" nipples, black vinyl coated.

**08B1** Cr-Mo spoke tool, for 3.30mm/80 ga./0.130" nipples, green vinyl coated.

**08C1** Cr-Mo spoke tool, for 3.45mm/80 ga./0.136" nipples, red vinyl coated.

**1208** 8-groove spoke tool, for 10-15G nipples.

**12A1** Spoke wrench for 3/16" (Hex) nipples with 5mm hex key, SNCM steel.

**12B1** Spoke wrench for 3.2mm (Square) nipples with 5mm hex key, SNCM steel.

**12C1** Spoke wrench for 5.5mm (Hex) nipples with 5mm hex key, SNCM steel.

**12F8** Forged 8-groove spoke wrench, 10~15G, Cr-Mo steel.

**12G2** Spoke wrench for Shimano wheel systems.

**12H2** Spoke wrench for Mavic wheel systems.

**12J2** Spoke wrench for 3.20mm/80 ga./0.127" nipples.

**12K2** Spoke wrench for 3.45mm/80 ga./0.136" nipples.

**12S1** Nipple tightener for deep rims, for use with electric screwdriver.

**12S3** Nipple tightener for deep rims.

**12T2** Bladed spoke catcher, for thickness 1.0~1.5mm.



Lifu Bicycle



▲0903



▲09B3



▲09C1



▲09C3



▲09D1



▲09E1



▲09F3



▲09M3



▲53A2



▲53D4

### Freewheel / Cassette Tools

**0903** For Suntour compatible 2-notch freewheels, Cr-V steel. For use with 1/2" driver and 21mm spanner.

**09B3** For Shimano MF compatible freewheels, Cr-V steel. Also for Campagnolo cassettes (all) and BBs (Record, Chorus, and Athena). For use with 1/2" driver and 21mm spanner.

**09C1** For Shimano CS compatible cassettes and Center Lock disc brakes, Cr-V steel. The guide pin prevents the tool from slipping out of the spline of the cassette locking. For use with 1/2" driver and 21mm spanner.

**09C3** For Shimano CS compatible cassettes and Center Lock disc brakes, Cr-V steel. For use with 1/2" driver and 21mm spanner.

**09D1** For 2-notch single speed freewheels, Cr-Mo steel.

**09E1** For 4-notch BMX freewheels, Cr-Mo steel.

**09F3** For Suntour compatible 4-notch freewheels, Cr-V steel. For use with 1/2" driver and 21mm spanner.

**09M3** For Miche compatible cassettes, Cr-V steel. For use with 1/2" driver and 21mm spanner.

**53A2** Freewheel turner (chain whip) with vinyl coated.

**53D4** 1/2" drive wrench, with quick release function.





▲11B1



▲11B3



▲09B3



▲11D3



▲11F1



▲11F2



▲11A0

### BB Tools

**11B1** For Shimano / ISIS Drive compatible cartridge BBs with 20 tooth in the ring, CNC engineered, Cr-Mo steel. For use with 1/2" air driver or ratchet wrench.

**11B3** For Shimano / ISIS Drive compatible cartridge BBs with 20 tooth in the ring, Cr-Mo steel. For use with 32mm headset wrench.

**09B3** For Shimano MF compatible freewheels, Cr-V steel. Also for Campagnolo cassettes (all) and BBs (Record, Chorus, and Athena). For use with 1/2" driver and 21mm spanner.

**11D3** For Shimano / ISIS Drive compatible cartridge BBs and Chaining locking with 8 external notches, Cr-Mo steel.

**11F1** For Shimano Hollowtech II compatible crank adaptor, Cr-Mo steel. For use with 8mm hex key or 3/8" driver. Patented.

**11F2** For Campagnolo Ultra-torque / Shimano Hollowtech II compatible crank adaptor, Cr-Mo steel.

**11A0** BB cup tool, pins made of Cr-Mo steel.



### Tire Levers

**1003** Steel tire lever set, chrome plated.

**1903** Steel tire lever set, zinc plated.

**6425** Fiberglass filled nylon tire lever, 25 sets in a display box.

**64D1** Screw type downhill tire lever, works for even most stubborn bicycle tires, Cr-V steel. Metal parts covered by durable nylon provides extra protection for Alu & Carbon rims.

**64N3** Fiberglass filled nylon tire lever set.



▲1003



▲1903



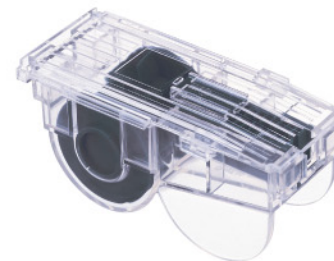
▲64D1



▲64N3



Lifu Bicycle



▲C111



▲C121



▲C131



▲C141



▲C153



▲C162

### Cleaning

**C111** Chain scrubber, 28 total brushes with exclusive 4-sided scrubber system cleans chain spotlessly. Patented.

**C121** Two-way brush, has soft bristles for delicate & stiff bristles for aggressive cleaning.

**C131** Concentrated degreaser, water based degreaser is better for the environment and cleaning your bike.

**C141** PTFE lubricant, contains PTFE & other additives to keep your chain running smooth.

**C153** Pro shop apron, double zip center pockets, dual open side pockets, and single zip chest pocket. Tough enough for a pro shop & comfortable enough for home use.

**C162** Brush set, with stiff bristles for aggressive cleaning.





▲35V8

▲35VA



▲36H1



▲36Q1



▲3TA1



▲70Y2



▲74A1



▲74B1



▲7M85

### Hex and Star Wrenches

- 35V8** 8mm hex key wrench with coating, Cr-V steel.
- 35VA** 10mm hex key wrench with coating, Cr-V steel.
- 36H1** Quartet wrench, 4x5x6x8mm flex-key wrenches, Cr-V steel.
- 36Q1** 2x2.5x3x4x5x6x8mm hex key wrenches, 4x5x6mm ball-ended, Cr-V steel.
- 3TA1** Star key wrench set, contains T-10x15x20x25x27x30x40x45x50 star keys, Cr-V steel.
- 70Y2** 4x5x6mm hex key wrench, with comfortable Kraton grip.
- 74A1** 6-in-1 3x4x5x6mm hex keys, +/- screwdrivers. Patented.
- 74B1** Perfect tool for in-line skate, contains bearing pusher, 4x6mm hex keys, +/- screwdrivers. Patented.
- 7M85** TwinHead wrench set, contains 2x2.5x3x4x5x6x8mm hex key wrenches (ball-ended) and T-25 star wrench, SNCM steel.



▲0502



▲37A1-37C1



▲4713-4719



▲4720-4725

### Cone Wrenches

- 0502** 13x14x15x16mm cone wrench set, SK5 steel, set of 2 pieces.
- 37A1-37C1** Cone wrenches, Cr-Mo steel.  
37A1: 13x14mm  
37B1: 15x16mm  
37C1: 17x18mm
- 4713-4719** 13~19mm cone wrench, Cr-Mo steel, length: 200mm.
- 4720-4725** 20~25mm cone wrench, Cr-Mo steel, length: 230mm.

### Headset Tools

- 06F2** 32mm headset wrench, Cr-Mo steel.
- 06F6** 36mm headset wrench, Cr-Mo steel.
- 06H8** 30x32x36x40mm 4-in-1 headset wrench, Cr-Mo steel.



▲06F2/06F6



▲06H8





### Pedal and Axle Wrenches

- 13E1** Foot axle peg installation tool, up to 125mm in peg length, for 14 & 15mm nuts.
- 13E2** Foot axle peg installation tool, up to 125mm in peg length, for 14 & 19mm nuts.
- 33F5** 15mm pedal wrench, off-set designed, Cr-Mo steel.
- 34A2** 10mm open-ended, 15mm pedal wrench & 14x15mm sockets for crank fixing bolts and axle nuts, Cr-Mo steel. Patent Pending.
- 34H2** 15mm pedal wrench, and 8x10mm hex key for crank fixing bolts and freehubs, Cr-Mo steel.
- 34T2** 10mm open-ended, 5x6mm hex keys, 15mm pedal wrench & 15mm socket for axle nuts. Perfect tool for Track bikes, all you need in one tool. Patented.

### Cable Tools

- 01A1** Cable pliers, with a thumb lock to hold the cable tight for one hand operation.
- 67A3** Pro shop cable & spoke cutter for Shimano SIS SP. Contains inner wire and outer casing reconditioner. Patented.
- 67B3** Cable & spoke cutter for Shimano SIS SP. Contains inner wire and outer casing reconditioner. Patented.



### Cutting Tools

- 16A2** H.S.S. bladed cutter to use on Ti/Alu/ Cr-Mo/Carbon steel. Not recommended for threaded tubes or carbon fiber tubes. Contains one spared blade.
- S16A** Spared H.S.S. blade for #16Ax series tube cutters.
- 16G1** Saw guider, for up to 1-1/4" tubes. 90-degree no swing designed. Patent Pending.
- 16H1** Mini hack saw, contains Bi-Metal H.S.S. saw for carbon fiber tubes.
- S16H** Spared H.S.S. Bi-Metal saw for #16Hx series mini hack saws.

### Wrenches

- 25H6** 6" adjustable wrench with scale, forged.
- 39B8** 8~15mm Dual wrench set in a storage pouch. The pouch includes two holes to hang during use of wrenches.
- 4108-4115** Combination ratchet wrenches, 8~15mm, 5-degree ratcheting, Cr-V steel.
- 41B8** 8~15mm Combination ratchet wrench set in a storage pouch. The pouch includes two holes to hang during use of wrenches.
- 60A2** 8x9x10mm sockets, with comfortable Kraton grip.







▲21C2



▲21R2



▲51WB-53WB

**Safety**

**21C2** ABS trouser clip with 3M "Scotchlite" reflective sheeting.

**21R2** Steel trouser clip with 3M "Scotchlite" reflective sheeting.

**51WB-53WB** Safety flag, made of net-inserted fluorescent pennant and fiberglass pole. Different length and sections available.

**Tool Kits**

**803H** Multi-purpose tool kit.

**82A5** Pronto tool kit.

**82F1** Essence tool kit.

**82D1** Comprehensive tool kit.

**84A1** Wrap tool kit.

**85A1** Advanced mechanic tool kit.



▲803H



▲82A5



▲82F1



▲82D1



▲84A1



▲85A1



Lifu Bicycle



▲45A1



▲91A2



▲91C3



▲91A4



▲93B1



▲9405



▲9505



▲96K2



▲97A1



▲97B1



▲97C1



▲97D1

**Multi Tools**

**45A1** Lifu J-Tool, contains 12 functions, made of 6061 alu. and Cr-V steel.

**91A1** "Pocket-17" 17-function multi tool.

**91A2** "Pocket-17" multi tool with pouch.

**91A3** "Pocket-22" 22-function multi tool.

**91A4** "Pocket-22" multi tool with pouch.

**91C3** "Reserve-16" 2x2.5x3x4x5x6x8mm hex keys, +/- screwdrivers, T-25 star wrench, 12x13x14x15G spoke tools, chain tool (Shimano 7, 8, 9, 10-speed compatible), tire levers. Patented.

**93B1** "Release-20" 2x2.5x3x4x5x6x8mm hex keys, +/- screwdrivers, 8~15mm spanners, 14x15G spoke tools, tire levers. Patented.

**9405** "Compact-9" 2x2.5x3x4x5x6mm hex keys, +/- screwdrivers, T-25 star wrench. Patented.

**9505** "Compact-10" 2x2.5x3x4x5x6x8mm hex keys, +/- screwdrivers, T-25 star wrench. Patented.

**96K2** "Blade Man" 3x4x5x6mm hex keys, +/- screwdrivers, bottle opener, 10mm open-ended, knife, key ring. Patented.

**97A1** "Mighty-8" 2x2.5x3x4x5x6mm hex keys, +/- screwdrivers.

**97B1** "Mighty-9" 2x2.5x3x4x5x6x8mm hex keys, +/- screwdrivers.

**97C1** "Mighty-16" 2x2.5x3x4x5x6x8mm hex keys, +/- screwdrivers, 8x9x10x15mm spanners, 14x15G spoke wrenches, tire lever.

**97D1** "Mighty-7" 3x4x5x6mm hex keys, +/- screwdrivers, bottle opener.





▲17B1



▲17C2



▲17H1



▲17M3



▲17S1-17S5



▲17T1

### Assessories

**17B1** Stainless steel bottle opener.

**17C2** Coin holder, made of soft vinyl.

**17H1** IceToolz baseball hat, one size for all.

**17M3** Tape measure, measures up to 3 meters / 10 feet in centimeters & inches.

**17S1** IceToolz T-shirt, 100% cotton. Size: S.

**17S2** IceToolz T-shirt, 100% cotton. Size: M.

**17S3** IceToolz T-shirt, 100% cotton. Size: L.

**17S4** IceToolz T-shirt, 100% cotton. Size: XL.

**17S5** IceToolz T-shirt, 100% cotton. Size: XXL.

**17T1** Magnetic parts tray. Stainless steel with rubber pad at the bottom, contains two 1000+ Gauss permanent magnets. Patented saucer as a holder for non-magnetic parts when vertically using of this tray.



### POP System

POP display system, 62Wx151Hx42mmD. Made of durable cardboard for long life uses. Tools contain in this POP system are vary according to different target markets.



Lifu Bicycle



▲M021



▲M031



▲M041



▲M051



▲M061



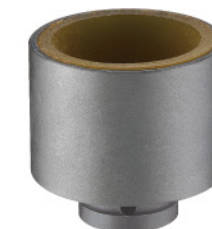
▲M074



▲M083



▲M100/M102/M106



▲M113/M117



▲M123/M127

### Impact Class Tools for Assembly Line

**M021** BB installation tool - 36mm, magnetic, left side.

**M031** BB installation tool - star, right side.

**M041** Crank fixing bolt installation tool - 14mm.

**M051** BB installation tool - right side.

**M061** BB installation tool - cartridge.

**M074** BB installation tool - 4-notch lockring.

**M083** BB installation tool - 3-notch lockring.

**M100** Headset lock nut installation tool - 30mm.

**M102** Headset lock nut installation tool - 32mm.

**M106** Headset lock nut installation tool - 36mm.

**M113** Headset head cup installation tool - 43mm.

**M117** Headset head cup installation tool - 47mm.

**M123** Headset head cup installation tool - 43mm.

**M127** Headset head cup installation tool - 47mm.





▲P611



▲P612



▲P614



### Display & Storage Service

**P611** Wall-mounted storage stand, for 2 bikes.

**P612** Storage stand, for 2 bikes.

**P614** Storage stand, for 4 bikes.

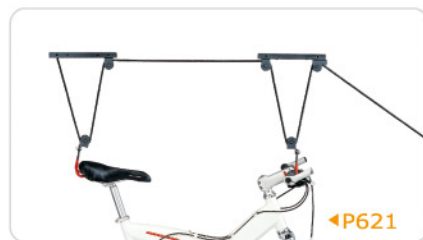
**P61H** Handle bar stabilizer. Patent Pending.

**P621** Bicycle lifter, dual pulley system, maximum height of 3 meters.

**P631** Storage rack, foldable for out of way storage.



◀P61H



◀P621



▼P631



Lifu Bicycle



▲P641



▲P643



### Display & Storage Service

**P641** Bi-stand, for display and repair. The height and angle of chain stay holder adjustable to fit different size and style of frame.

**P643** Stand-By-Me, for display and repair. The height and angle of chain stay holder adjustable to fit different size and style of frame.

**P645** Display stand.

**P655** Two-way storage hook, for slat wall or regular wall.

**P67x** P671: Aluminum slid rail, accessories included.  
P673: Roller system with 15cm length hook.  
P675: Roller system with 42cm length hook.

**P684** Wood thread with dowels, black vinyl coated.

**P686** Machine thread with nuts and spring washers, black vinyl coated.



P645▶



▲P655



▲P67x



▲P684



▲P686





▲E111



▲E12B



▲E12M



▲E126



▲E132



Steel base E13B is optional



▲E134

Steel base E13D is optional



▲E133



▲E135

Tool tray and tools are optional

## Xpert

**E111** Star nut installation tool, for 1" and 1-1/8" fork stem. Patented.

**E12B** Reinforced steel base for E125.

**E12M** Disc brake rotor straightness truing gauge for E125.

**E126** Pro shop truing stand. Patented.

**E132** Floor repair stand.

**E13B** Steel base for E132 - 8x60x60mm.

**E133** Repair stand, carry bag included.

**E134** Floor repair stand.

**E13D** Steel base for E134 - 8x60x90mm.

**E135** Pro shop repair stand.

**E13T** Tool tray for repair stand.



▲E13T Tools not included



Lifu Bicycle



▲E141/E143



For headset cups



For BB cups



▲E158



▲E171



▲E173



Tapping

E171: for facing and English tapping  
E173: for facing and English + Italian tapping



Facing



◀E17A-E17C



◀E17F

◀E17L  
E17R  
E17T

## Xpert

**E141** Headset cup / BB cup press tool, up to 1-1/2". Tube length up to 190mm. Patented.

**E143** Headset cup / BB cup press tool, up to 1-1/2". Tube length up to 260mm. Patented.

**E158** Complete tap set with handle.

**E171/E173** BB tapping & facing tool. Patented.

**E17A** BB screw, English (1.37x24), right.

**E17B** BB screw, English (1.37x24), left.

**E17C** BB screw, Italian (36x24).

**E17F** BB facer.

**E17L** Taper, English (1.37x24), left.

**E17R** Taper, English (1.37x24), right.

**E17T** Taper, Italian (36x24).





▲E181



E181: Head tube reaming &amp; facing tool.

E18P + E18R: for Cane Creek  
E18T + E18U: for Campagnolo and FSA

▲E18A/E18B



▲E18C



▲E18F



▲E18P/E18T



▲E18R/E18U



▲E191/E193



## Xpert

**E181** Head tube reaming & facing tool. for 1" and 1-1/8" standard headset systems.

**E18A** Head tube reamer, 30mm diameter.

**E18B** Head tube reamer, 34mm diameter.

**E18C** Head tube reamer, 34mm diameter, Chris King.

**E18F** Head tube facer.

**E18P** Head tube reamer for Cane Creek, top.

**E18R** Head tube reamer for Cane Creek, bottom.

**E18T** Head tube reamer for Campagnolo & FSA, top.

**E18U** Head tube reamer for Campagnolo & FSA, bottom.

**E191** Seat tube reamers, for 25.6, 26.6, 27.4mm diameter.

**E193** Seat tube reamers, for 27.4, 30.9, 31.6mm diameter.



▲E211



▲E212



▲E213



▲E221



◀E231



▲E242

## Xpert

**E211** "Click" torque wrench, 21~105NM, for 3/8" & 1/2" sockets.

**E212** "Click" torque wrench, 5~25NM, for 1/4" & 3/8" sockets.

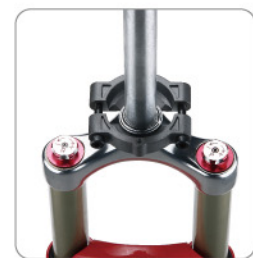
**E213** "Click" torque wrench, 1.5~5NM, for 1/4" sockets.

**E221** Headset cup remover, up to 1-1/4".

**E231** Crown race seat cutting tool, for 26.4, 27.0, 30.0mm.

**E242** Crown race installation tool, for 1" and 1-1/8" fork stem.





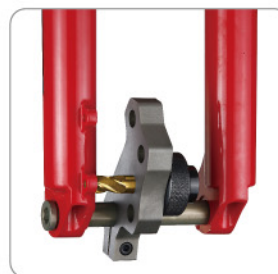
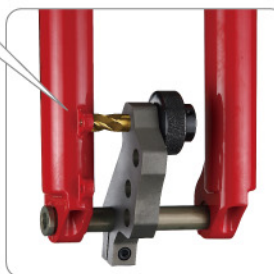
▲E251



▲E261



▲E271



▲E381



▲E383

**Xpert**

**E251** Crown race remover, up to 1-1/4". Patent pending.

**E261** Frame & fork adjuster, for expanding & compressing forks, chain stays, and seat stays. Trapezoid thread provides extra power and longer life time. With protective rubbers where tool meets bike.

**E271** Disc mount facing tool, unit designed for standard & downhill frames and forks. Patent Pending.

**E381** Spoke tension meter, Japanese Mitutoyo meter scales to 0.01mm. Patent Pending.

**E383** Spoke tension meter, digital meter scales to 0.01mm. Patent Pending.



▲E312



▲E322



▲E331



▲E341

**Xpert**

**E312** Wheel centering gauge, for rim size 16"~31".

**E322** Stainless steel spoke ruler, up to 13".

**E331** Thread gauges, for metric & SAE.

**E341** Frame & fork end alignment tool. Patent pending.

**E511** Impact driver set.



▲E511

